

Submit a Copy To Appropriate District Office
 District I – (575) 393-6161
 1625 N. French Dr., Hobbs, NM 88240
 District II – (575) 748-1283
 811 S. First St., Artesia, NM 88210
 District III – (505) 334-6178
 1000 Rio Brazos Rd., Aztec, NM 87410
 District IV – (505) 476-3460
 1220 S. St. Francis Dr., Santa Fe, NM 87505

State of New Mexico
 Energy, Minerals and Natural Resources

Form C-103
 Revised July 18, 2013

OIL CONSERVATION DIVISION
 1220 South St. Francis Dr.
 Santa Fe, NM 87505

SUNDRY NOTICES AND REPORTS ON WELLS (DO NOT USE THIS FORM FOR PROPOSALS TO DRILL OR TO DEEPEN OR PLUG BACK TO A DIFFERENT RESERVOIR. USE "APPLICATION FOR PERMIT" (FORM C-101) FOR SUCH PROPOSALS.)		WELL API NO. 30-025-42448
1. Type of Well: Oil Well <input type="checkbox"/> Gas Well <input checked="" type="checkbox"/> Other SWD		5. Indicate Type of Lease STATE <input type="checkbox"/> FEE <input checked="" type="checkbox"/>
2. Name of Operator OWL SWD OPERATING, LLC		6. State Oil & Gas Lease No.
3. Address of Operator 8201 Preston Rd, Suite 520; Dallas, TX 75225		7. Lease Name or Unit Agreement Name MADERA SWD
4. Well Location Unit Letter <u> N </u> : <u> 433 </u> feet from the <u> SOUTH </u> line and <u> 1970 </u> feet from the <u> WEST </u> line Section <u> 14 </u> Township <u> 24 S </u> Range <u> 34 E </u> NMPM County <u> LEA </u>		8. Well Number #1
11. Elevation (Show whether DR, RKB, RT, GR, etc.) 3464' GR		9. OGRID Number 308339
		10. Pool name or Wildcat SWD; DEVONIAN (96101)

12. Check Appropriate Box to Indicate Nature of Notice, Report or Other Data

NOTICE OF INTENTION TO:	SUBSEQUENT REPORT OF:
PERFORM REMEDIAL WORK <input type="checkbox"/>	REMEDIAL WORK <input checked="" type="checkbox"/>
TEMPORARILY ABANDON <input type="checkbox"/>	ALTERING CASING <input type="checkbox"/>
PULL OR ALTER CASING <input type="checkbox"/>	COMMENCE DRILLING OPNS. <input type="checkbox"/>
DOWNHOLE COMMINGLE <input type="checkbox"/>	P AND A <input type="checkbox"/>
CLOSED-LOOP SYSTEM <input type="checkbox"/>	CASING/CEMENT JOB <input checked="" type="checkbox"/>
OTHER: <input type="checkbox"/>	OTHER: <input type="checkbox"/>

13. Describe proposed or completed operations. (Clearly state all pertinent details, and give pertinent dates, including estimated date of starting any proposed work). SEE RULE 19.15.7.14 NMAC. For Multiple Completions: Attach wellbore diagram of proposed completion or recompletion.

8/27/21 – Ran Injection Survey Loc

9/12/21 – MIRU Workover rig. NU/test BOPs

9/13/21 – Attempted to latch onto fish top/hanger. Pulled 16.6" tubing.

9/14/21 – RIH, tag fish @51.65'. Attempt to latch onto fish.

9/15/21 – RU casing crew. RIH, latch onto fish. Retrieved 84' tubing

9/16/21 – Attempt to work tools over fish at 225'

Spud Date:

Rig Release Date:

I hereby certify that the information above is true and complete to the best of my knowledge and belief.

SIGNATURE Lucas Sheward TITLE Operations Engineer DATE 12/10/2021

Type or print name Lucas Sheward E-mail address: lsheward@oilfieldwaterlogistics.com PHONE: 432-242-8991

For State Use Only

APPROVED BY: Kerry Fortner TITLE Compliance Officer A DATE 9/25/23
 Conditions of Approval (if any):

9/17/21 – Run W/L through tubing

9/18/21 – Rig Down workover rig

10/27/21-10/30/21 MIRU

10/31/21 – RIH w/ fishing tools. Tag fish @ 247'. RIH w/ jet cutter. Attempted cut at 17,315'. POOH. RIH w/ 2nd cutter. Cut 5.5" tubing at 10,060'. POOH w/ tubing.

11/1/21 – Finish POOH w/ 5.5" tubing.

11/2/21 – RIH w/ camera. Found part in 10.75" at 150' with 7' void @ 157'. RIH w/ dress off tool

11/3/21 – Resume fishing operations

11/5/21 – Fishing 5.5" tubing

11/6/21 – Finish pulling 5.5" tubing and complete seal assembly. RIH with 10.75" scraper.

11/7/21 – Attempt to RIH w/ 7.625" packer

11/8/21 – Attempt to RIH with 7.625" retrievable bridge plug, unable to get through 10.75".

11/9/21 – RU to pump test 13-5/8". Gravity fed 40 bbls fresh water. 16" and 13-5/8" not full after 40 bbls.

11/10/21 – RIH with 7-5/8" tubing. Tagged at 10,168'.

11/11/21 – POOH w/ 7-5/8" tubing. TIH w/ 6 1/2" bit

11/12/21 – TIH w/ 4 1/2" DP & Bit. Make hydraulic repairs on rig. Tagged at 10,181'. Cont'd TIH to 10,400'. POOH and did not see overpull at 10,181' when POOH.

11/13/21 – Resume POOH. PU 12 jts 7 5/8" csg. TIH through 10 3/4" part. RU/WL to make GR and plug run. Tagged liner at 10,186'. Worked through to 10,406'. POOH w/ WL. PU and RIH w/ 7 5/8" WL RBP. Set plug at roughly 10,300'. POOH w/ WL. POOH w/ 12 jts 7 5/8" csg.

11/14/21 – Rig repairs and downtime. TIH w/ 4" DP to 6213'. RU Halliburton cementers. Pump 35 bbl gel spacer, 5bpm @ 300psi. Pump 145 sacks #15.6 cmt 4 bpm @ 200 psi. Pump 7 bbl gel spacer 8 bpm @ 130 psi. Pump 74 bbls displacement 8 bpm @ 130 psi. Shut down pumps. POOH to 4916'. Circulated 3 wellbore volumes no cmt came across shakers. Shut down pumps. POOH to 4547' and WOC.

11/15/21 – POOH w/ DP. RU slickline. RIH w/ slickline tag plug @ 5843'. POOH. Rig downtime. Prep for backoff casing job on 10 3/4".

11/16/21 – PU/MU fishing spear for 10 3/4". Latched into 10 3/4" and POOH. Recovered 132' of 10 3/4". PU spear, grapple and RIH to backoff 10 3/4" below 1300'.

11/17/21 – Continue backoff job. POOH 1595' of 10 3/4" casing and LD. Total of 1727' 10 3/4" recovered from well. RIH w/ WL and perform CBL & casing inspection log from 1700' to surface. Tools not working POOH.

11/18/21 – Continue RIH w/ WL to perform log. Send log to office and review possible casing part at 141'. Wait on orders.

11/19/21 – Wait on orders. Rig repairs and downtime. RIH w/ 4 1/2" DP and 12 3/4" OD on/off tool to attempt to run through casing part before setting RBP. Could not get through part. Wait on 13 5/8" spear.

11/20/21 – Wait on spear. Rig repairs and downtime.

11/21/21 – RU spear, RIH w/ spear and engage. Pulled 150k over and no movement. Unable to pull top parted fish of 13 5/8". POOH w/ spear. Wait on string mill to arrive. RIH w/ 12 3/4" string mill through part down to 185'. POOH w/ string mill. PU and RIH w/ DP and 12 3/4" on/off tool. Unable to get through part with tool. POOH w/ tool. Wait on casing jacks to arrive for 13 5/8".

11/22/21 – Jacks will not work. Unable to locate jacks for 13 5/8". Wait on orders. Order larger string mill.

11/23/21 – PU/RIH w/ 12.40" OD string mill. Work mill through part down to 200'. POOH w/ string mill. PU/RIH w/ 13 5/8" RBP on DP.

11/24/21 – Continue RIH w/ DP and 13 5/8" RBP to 1600'. Set plug @ 1600'. POOH w/ setting tool. RIH w/ pkr and test plug. Good test. Dump sand on top of plug. POOH w/ pkr. RU/WL and RIH to 1490-91' to shoot squeeze holes. POOH w/ WL. PU DP and RIH to 1504'. Wait on Halliburton.

11/25/21 – RU Halliburton cementers. Pump 20 bbl gel spacer 3 bpm @ 110 psi. Pump 38 bbls cmt #14.8 4 bpm @ 140 psi. Pump 2 bbl spacer 3 bpm @ 23 psi. Displace w/ 11 bbls 4 bpm @ 72 psi. Shut down pumps. POOH w/ DP. MU/PU 13 5/8" pkr and RIH to 300' set pkr. Pump displacement @ 1 bpm pressure up to 2300 psi. Held pressure for 2 hours. Bleed off and release pkr. POOH w/ pkr.

11/26/21 – WOC. RIH w/ DP and 12 1/4" bit. Tag TOC @ 1279'. Drill out cmt. POOH w/ bit. RU/WL for CBL to 1548'. Wait on orders

11/27/21 – RU/WL for another CBL from 1548' to surface. RIH log, POOH. Wait on orders. Perforate 1100-1101' squeeze holes. PU/MU pkr. RIH w/ pkr to 599' and set. Perform injection test. 4 bpm @ 116 psi. 5 bpm @ 215 psi. Release packer and POOH. RIH w/ 13 5/8" retainer and set @ 966'. POOH. RIH w/ stinger.

11/28/21 – RU Halliburton cementers. Pump 20 bbls gel spacer. Pump 100 bbls #14.8 cmt 5 bpm @ 650 psi. Displace w/ 11 bbls brine. Shut down pumps. POOH and circulate. WOC.

11/29/21 – WOC. RIH w/ bit and DP. Begin drilling out retainer.

11/30/21 – Drilling out retainer and cement.

12/1/21 – Drilling out retainer and cement.

12/2/21 – POOH w/ bit and DP. RU/WL and RIH CBL from 1550' to surface. Wait on orders.

12/3/21 – Wait on orders.

12/4/21 – RIH w/ pkr and test RBP. Good test. POOH. Lost pkr in hole. Fish out pkr. RIH w/ pkr/plug test multiple intervals between squeeze holes. Downtime rig repairs. Continue testing casing w/ plug/pkr. POOH. RIH w/ DP to 1550' fill pipe and circulate while finish building LCM/HI-VIS pill.

12/5/21 – RU Halliburton cementers. Pump 18 bbls gel spacer 4 bpm @ 160 psi. Pump 33 bbls #12.7 cmt 4 bpm @ 150 psi. Pump 14 bbls displacement 5 bpm @ 115 psi. SD pumps. POOH to surface. WOC.

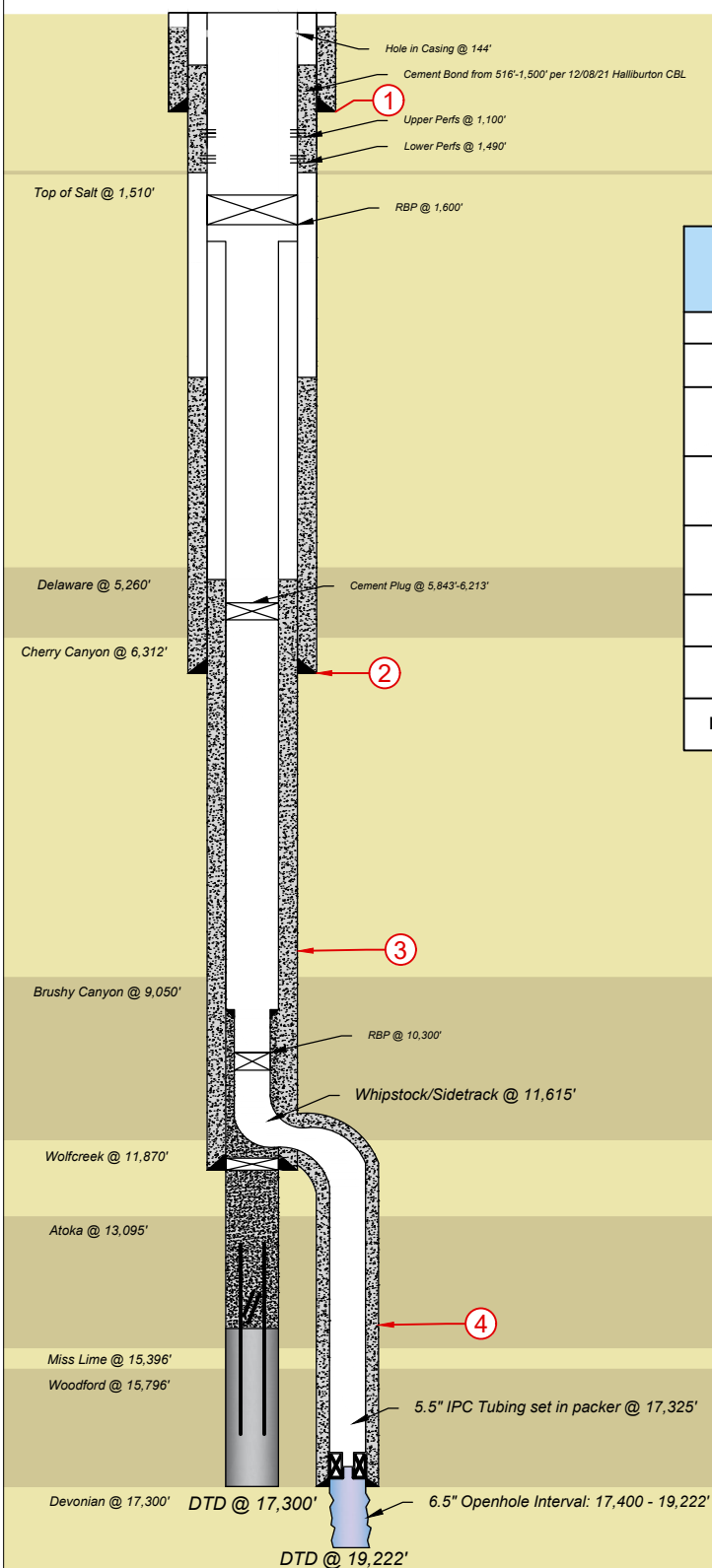
12/6/21 – RIH w/ bit to tag TOC @ 1383'. POOH to surface. RIH w/ retainer to 1010' and set. POOH. RIH w/ stinger and sting into retainer. Pump 20 bbls gel spacer 3 bpm @ 350 psi. Pump 80 bbls #12.5 cmt 3 bpm @ 275-500 psi. Wait 20 mins and pump another 20 bbls #12.5 cmt 3 bpm @ 350 psi. Displace w/ 12 bbls @ 430 psi. Red dye is seen circulating at surface as well as good cement returns to surface during job. Sting out of retainer. Circulate and POOH to surface. WOC.

12/7/21 – WOC. PU/MU bit. Drill out retainer and cmt to 1383'. POOH to surface.

12/8/21 – RU/WL and RIH CBL from 1300' to surface. Good cement bond from 1300' to 516' per HES. Wait on orders.

12/9/21 – Drill out cmt plug from 1383' to 1560'.

12/10/21 – Continue DO plug from 1383' to 1560'. CHC and POOH to surface. RU/WL and RIH CBL from 1550' to surface. Good cement bond from 1540' to 1350' and from 1250' to 250' per HES technical team. Prep to retrieve 13 5/8" RBP at 1600'.



Casing Information

Label	1	2	3	4
Type	Surface	Intermediate	2nd Intermediate	Production/Liner
OD	16"	13-5/8"	10-3/4"	7-5/8"
Weight	75 lb/ft	88.2 lb/ft	65.7 lb/ft	39 lb/ft
Grade	K-55	Unkown	Q-125	P-110
Top of Cement	80'	~3,900'	~5,300'	10,192'
Hole Size	20"	14-1/2"	12"	8-1/2"
Depth Set	1,000	6,911'	1,726' - 11,995'	10,192' - 17,400'

LONQUIST

FIELD SERVICE

AUSTIN
HOUSTONWICHITA
CALGARY

Texas License F-8652

1415 Louisiana St, Suite 3800
Houston, Texas 77002
Tel: 713.559.9950
Fax: 713.559.9959

OWL SWD Operating Inc.

Country: USA

Well API No: 30-025-42448

Survey/STR: SEC 14-T24S-R31E

Drawn: Krystyn Strong

Rev No:

Madera SWD Well No. 1 - As Completed

State/Province: New Mexico

Project No: 2345

Formation: Devonian

Reviewed: Ramona Hovey

Notes:

County/Parish: Lea

Date: 12/10/2021

Well Type: SWD

Approved: Ramona Hovey

Submit a Copy To Appropriate District
Office
District I – (575) 393-6161
1625 N. French Dr., Hobbs, NM 88240
District II – (575) 748-1283
811 S. First St., Artesia, NM 88210
District III – (505) 334-6178
1000 Rio Brazos Rd., Aztec, NM 87410
District IV – (505) 476-3460
1220 S. St. Francis Dr., Santa Fe, NM
87505

State of New Mexico
Energy, Minerals and Natural Resources

Form C-103
Revised July 18, 2013

OIL CONSERVATION DIVISION
1220 South St. Francis Dr.
Santa Fe, NM 87505

SUNDRY NOTICES AND REPORTS ON WELLS (DO NOT USE THIS FORM FOR PROPOSALS TO DRILL OR TO DEEPEN OR PLUG BACK TO A DIFFERENT RESERVOIR. USE "APPLICATION FOR PERMIT" (FORM C-101) FOR SUCH PROPOSALS.)		WELL API NO. 30-025-42448
1. Type of Well: Oil Well <input type="checkbox"/> Gas Well <input checked="" type="checkbox"/> Other SWD		5. Indicate Type of Lease STATE <input type="checkbox"/> FEE <input checked="" type="checkbox"/>
2. Name of Operator OWL SWD OPERATING, LLC		6. State Oil & Gas Lease No.
3. Address of Operator 8201 Preston Rd, Suite 520; Dallas, TX 75225		7. Lease Name or Unit Agreement Name MADERA SWD
4. Well Location Unit Letter <u> N </u> : <u> 433 </u> feet from the <u> SOUTH </u> line and <u> 1970 </u> feet from the <u> WEST </u> line Section <u> 14 </u> Township <u> 24 S </u> Range <u> 34 E </u> NMPM County <u> LEA </u>		8. Well Number #1
11. Elevation (Show whether DR, RKB, RT, GR, etc.) 3464' GR		9. OGRID Number 308339
		10. Pool name or Wildcat SWD; DEVONIAN (96101)

12. Check Appropriate Box to Indicate Nature of Notice, Report or Other Data

NOTICE OF INTENTION TO:		SUBSEQUENT REPORT OF:	
PERFORM REMEDIAL WORK <input type="checkbox"/>	PLUG AND ABANDON <input type="checkbox"/>	REMEDIAL WORK <input checked="" type="checkbox"/>	ALTERING CASING <input type="checkbox"/>
TEMPORARILY ABANDON <input type="checkbox"/>	CHANGE PLANS <input type="checkbox"/>	COMMENCE DRILLING OPNS. <input type="checkbox"/>	P AND A <input type="checkbox"/>
PULL OR ALTER CASING <input type="checkbox"/>	MULTIPLE COMPL <input type="checkbox"/>	CASING/CEMENT JOB <input checked="" type="checkbox"/>	
DOWNHOLE COMMINGLE <input type="checkbox"/>			
CLOSED-LOOP SYSTEM <input type="checkbox"/>			
OTHER: <input type="checkbox"/>		OTHER: <input type="checkbox"/>	

13. Describe proposed or completed operations. (Clearly state all pertinent details, and give pertinent dates, including estimated date of starting any proposed work). SEE RULE 19.15.7.14 NMAC. For Multiple Completions: Attach wellbore diagram of proposed completion or recompletion.

8/27/21 – Ran Injection Survey Loc

9/12/21 – MIRU Workover rig. NU/test BOPs

9/13/21 – Attempted to latch onto fish top/hanger. Pulled 16.6" tubing.

9/14/21 – RIH, tag fish @51.65'. Attempt to latch onto fish.

9/15/21 – RU casing crew. RIH, latch onto fish. Retrieved 84' tubing

9/16/21 – Attempt to work tools over fish at 225'

Spud Date:

Rig Release Date:

I hereby certify that the information above is true and complete to the best of my knowledge and belief.

SIGNATURE Lucas Sheward TITLE Operations Engineer DATE 12/10/2021

Type or print name Lucas Sheward E-mail address: lsheward@oilfieldwaterlogistics.com PHONE: 432-242-8991

For State Use Only

APPROVED BY: _____ TITLE _____ DATE _____

Conditions of Approval (if any):

9/17/21 – Run W/L through tubing

9/18/21 – Rig Down workover rig

10/27/21-10/30/21 MIRU

10/31/21 – RIH w/ fishing tools. Tag fish @ 247'. RIH w/ jet cutter. Attempted cut at 17,315'. POOH. RIH w/ 2nd cutter. Cut 5.5" tubing at 10,060'. POOH w/ tubing.

11/1/21 – Finish POOH w/ 5.5" tubing.

11/2/21 – RIH w/ camera. Found part in 10.75" at 150' with 7' void @ 157'. RIH w/ dress off tool

11/3/21 – Resume fishing operations

11/5/21 – Fishing 5.5" tubing

11/6/21 – Finish pulling 5.5" tubing and complete seal assembly. RIH with 10.75" scraper.

11/7/21 – Attempt to RIH w/ 7.625" packer

11/8/21 – Attempt to RIH with 7.625" retrievable bridge plug, unable to get through 10.75".

11/9/21 – RU to pump test 13-5/8". Gravity fed 40 bbls fresh water. 16" and 13-5/8" not full after 40 bbls.

11/10/21 – RIH with 7-5/8" tubing. Tagged at 10,168'.

11/11/21 – POOH w/ 7-5/8" tubing. TIH w/ 6 1/2" bit

11/12/21 – TIH w/ 4 1/2" DP & Bit. Make hydraulic repairs on rig. Tagged at 10,181'. Cont'd TIH to 10,400'. POOH and did not see overpull at 10,181' when POOH.

11/13/21 – Resume POOH. PU 12 jts 7 5/8" csg. TIH through 10 3/4" part. RU/WL to make GR and plug run. Tagged liner at 10,186'. Worked through to 10,406'. POOH w/ WL. PU and RIH w/ 7 5/8" WL RBP. Set plug at roughly 10,300'. POOH w/ WL. POOH w/ 12 jts 7 5/8" csg.

11/14/21 – Rig repairs and downtime. TIH w/ 4" DP to 6213'. RU Halliburton cementers. Pump 35 bbl gel spacer, 5bpm @ 300psi. Pump 145 sacks #15.6 cmt 4 bpm @ 200 psi. Pump 7 bbl gel spacer 8 bpm @ 130 psi. Pump 74 bbls displacement 8 bpm @ 130 psi. Shut down pumps. POOH to 4916'. Circulated 3 wellbore volumes no cmt came across shakers. Shut down pumps. POOH to 4547' and WOC.

11/15/21 – POOH w/ DP. RU slickline. RIH w/ slickline tag plug @ 5843'. POOH. Rig downtime. Prep for backoff casing job on 10 3/4".

11/16/21 – PU/MU fishing spear for 10 3/4". Latched into 10 3/4" and POOH. Recovered 132' of 10 3/4". PU spear, grapple and RIH to backoff 10 3/4" below 1300'.

11/17/21 – Continue backoff job. POOH 1595' of 10 3/4" casing and LD. Total of 1727' 10 3/4" recovered from well. RIH w/ WL and perform CBL & casing inspection log from 1700' to surface. Tools not working POOH.

11/18/21 – Continue RIH w/ WL to perform log. Send log to office and review possible casing part at 141'. Wait on orders.

11/19/21 – Wait on orders. Rig repairs and downtime. RIH w/ 4 1/2" DP and 12 3/4" OD on/off tool to attempt to run through casing part before setting RBP. Could not get through part. Wait on 13 5/8" spear.

11/20/21 – Wait on spear. Rig repairs and downtime.

11/21/21 – RU spear, RIH w/ spear and engage. Pulled 150k over and no movement. Unable to pull top parted fish of 13 5/8". POOH w/ spear. Wait on string mill to arrive. RIH w/ 12 3/4" string mill through part down to 185'. POOH w/ string mill. PU and RIH w/ DP and 12 3/4" on/off tool. Unable to get through part with tool. POOH w/ tool. Wait on casing jacks to arrive for 13 5/8".

11/22/21 – Jacks will not work. Unable to locate jacks for 13 5/8". Wait on orders. Order larger string mill.

11/23/21 – PU/RIH w/ 12.40" OD string mill. Work mill through part down to 200'. POOH w/ string mill. PU/RIH w/ 13 5/8" RBP on DP.

11/24/21 – Continue RIH w/ DP and 13 5/8" RBP to 1600'. Set plug @ 1600'. POOH w/ setting tool. RIH w/ pkr and test plug. Good test. Dump sand on top of plug. POOH w/ pkr. RU/WL and RIH to 1490-91' to shoot squeeze holes. POOH w/ WL. PU DP and RIH to 1504'. Wait on Halliburton.

11/25/21 – RU Halliburton cementers. Pump 20 bbl gel spacer 3 bpm @ 110 psi. Pump 38 bbls cmt #14.8 4 bpm @ 140 psi. Pump 2 bbl spacer 3 bpm @ 23 psi. Displace w/ 11 bbls 4 bpm @ 72 psi. Shut down pumps. POOH w/ DP. MU/PU 13 5/8" pkr and RIH to 300' set pkr. Pump displacement @ 1 bpm pressure up to 2300 psi. Held pressure for 2 hours. Bleed off and release pkr. POOH w/ pkr.

11/26/21 – WOC. RIH w/ DP and 12 1/4" bit. Tag TOC @ 1279'. Drill out cmt. POOH w/ bit. RU/WL for CBL to 1548'. Wait on orders

11/27/21 – RU/WL for another CBL from 1548' to surface. RIH log, POOH. Wait on orders. Perforate 1100-1101' squeeze holes. PU/MU pkr. RIH w/ pkr to 599' and set. Perform injection test. 4 bpm @ 116 psi. 5 bpm @ 215 psi. Release packer and POOH. RIH w/ 13 5/8" retainer and set @ 966'. POOH. RIH w/ stinger.

11/28/21 – RU Halliburton cementers. Pump 20 bbls gel spacer. Pump 100 bbls #14.8 cmt 5 bpm @ 650 psi. Displace w/ 11 bbls brine. Shut down pumps. POOH and circulate. WOC.

11/29/21 – WOC. RIH w/ bit and DP. Begin drilling out retainer.

11/30/21 – Drilling out retainer and cement.

12/1/21 – Drilling out retainer and cement.

12/2/21 – POOH w/ bit and DP. RU/WL and RIH CBL from 1550' to surface. Wait on orders.

12/3/21 – Wait on orders.

12/4/21 – RIH w/ pkr and test RBP. Good test. POOH. Lost pkr in hole. Fish out pkr. RIH w/ pkr/plug test multiple intervals between squeeze holes. Downtime rig repairs. Continue testing casing w/ plug/pkr. POOH. RIH w/ DP to 1550' fill pipe and circulate while finish building LCM/HI-VIS pill.

12/5/21 – RU Halliburton cementers. Pump 18 bbls gel spacer 4 bpm @ 160 psi. Pump 33 bbls #12.7 cmt 4 bpm @ 150 psi. Pump 14 bbls displacement 5 bpm @ 115 psi. SD pumps. POOH to surface. WOC.

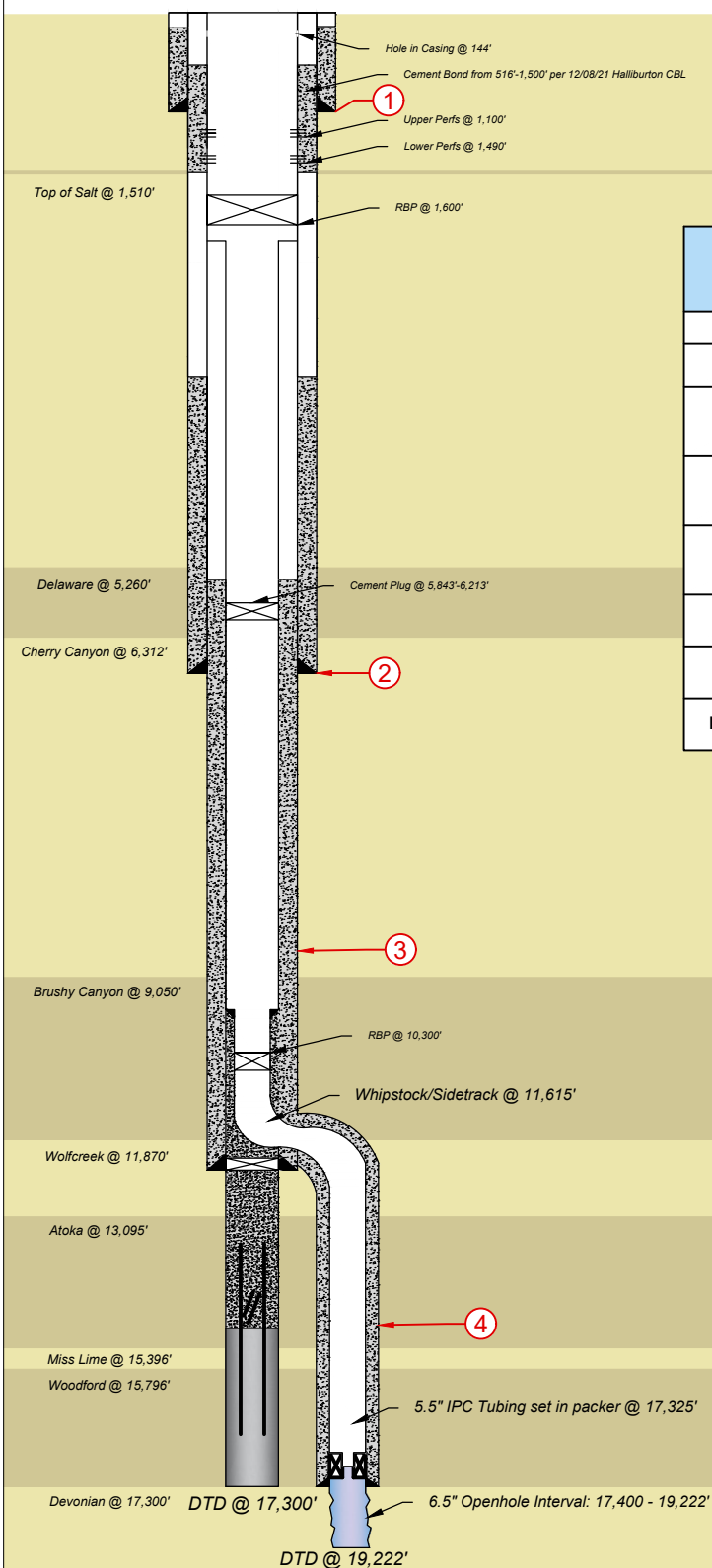
12/6/21 – RIH w/ bit to tag TOC @ 1383'. POOH to surface. RIH w/ retainer to 1010' and set. POOH. RIH w/ stinger and sting into retainer. Pump 20 bbls gel spacer 3 bpm @ 350 psi. Pump 80 bbls #12.5 cmt 3 bpm @ 275-500 psi. Wait 20 mins and pump another 20 bbls #12.5 cmt 3 bpm @ 350 psi. Displace w/ 12 bbls @ 430 psi. Red dye is seen circulating at surface as well as good cement returns to surface during job. Sting out of retainer. Circulate and POOH to surface. WOC.

12/7/21 – WOC. PU/MU bit. Drill out retainer and cmt to 1383'. POOH to surface.

12/8/21 – RU/WL and RIH CBL from 1300' to surface. Good cement bond from 1300' to 516' per HES. Wait on orders.

12/9/21 – Drill out cmt plug from 1383' to 1560'.

12/10/21 – Continue DO plug from 1383' to 1560'. CHC and POOH to surface. RU/WL and RIH CBL from 1550' to surface. Good cement bond from 1540' to 1350' and from 1250' to 250' per HES technical team. Prep to retrieve 13 5/8" RBP at 1600'.



Casing Information				
Label	1	2	3	4
Type	Surface	Intermediate	2nd Intermediate	Production/Liner
OD	16"	13-5/8"	10-3/4"	7-5/8"
Weight	75 lb/ft	88.2 lb/ft	65.7 lb/ft	39 lb/ft
Grade	K-55	Unkown	Q-125	P-110
Top of Cement	80'	~3,900'	~5,300'	10,192'
Hole Size	20"	14-1/2"	12"	8-1/2"
Depth Set	1,000	6,911'	1,726' - 11,995'	10,192' - 17,400'

LONQUIST

FIELD SERVICE

AUSTIN HOUSTON WICHITA CALGARY

Texas License F-8652

1415 Louisiana St, Suite 3800
Houston, Texas 77002
Tel: 713.559.9950
Fax: 713.559.9959

OWL SWD Operating Inc.

Country: USA

Well API No: 30-025-42448

Survey/STR: SEC 14-T24S-R31E

Drawn: Krystyn Strong

Rev No:

Madera SWD Well No. 1 - As Completed

State/Province: New Mexico

Project No: 2345

Formation: Devonian

Reviewed: Ramona Hovey

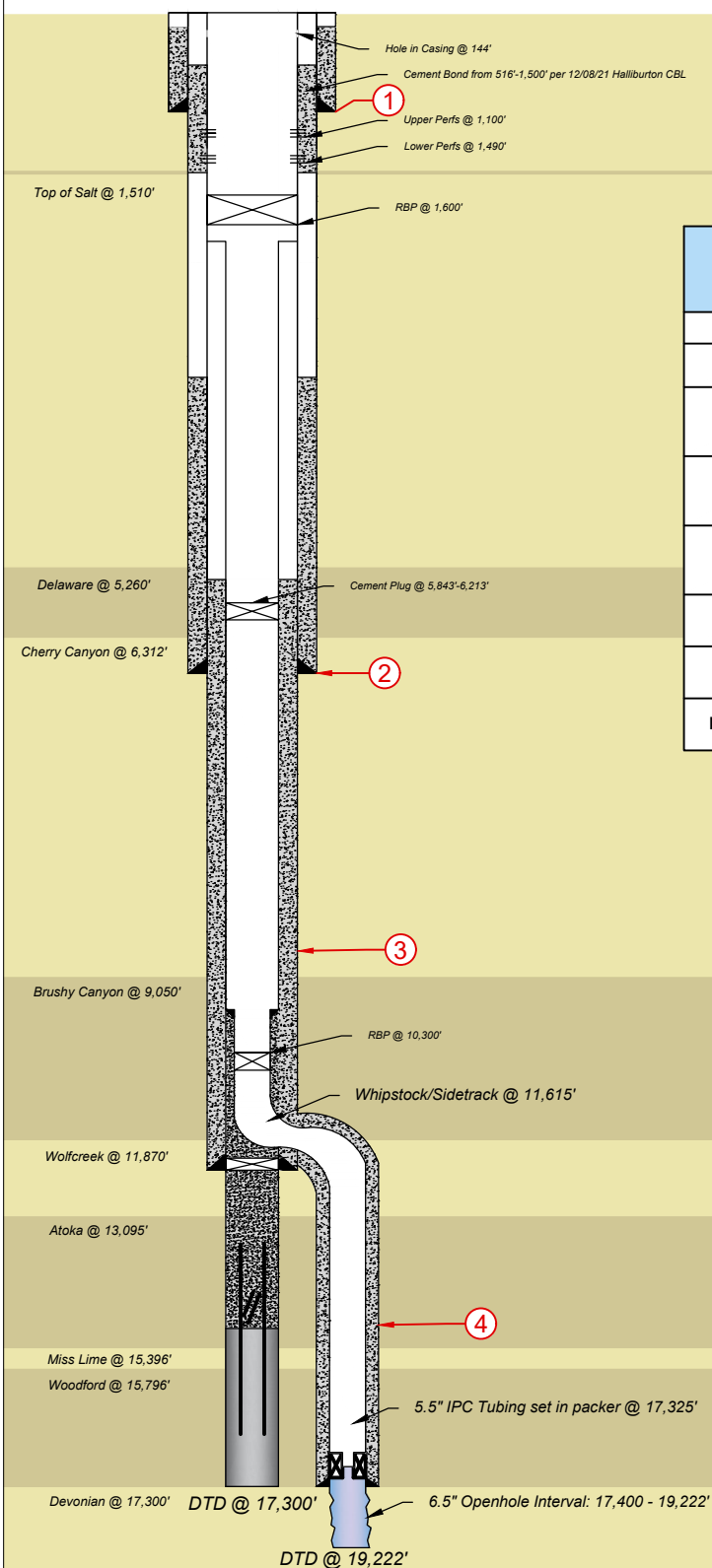
Notes:

County/Parish: Lea

Date: 12/10/2021

Well Type: SWD

Approved: Ramona Hovey



Casing Information				
Label	1	2	3	4
Type	Surface	Intermediate	2nd Intermediate	Production/Liner
OD	16"	13-5/8"	10-3/4"	7-5/8"
Weight	75 lb/ft	88.2 lb/ft	65.7 lb/ft	39 lb/ft
Grade	K-55	Unkown	Q-125	P-110
Top of Cement	80'	~3,900'	~5,300'	10,192'
Hole Size	20"	14-1/2"	12"	8-1/2"
Depth Set	1,000	6,911'	1,726' - 11,995'	10,192' - 17,400'

LONQUIST

FIELD SERVICE

AUSTIN
HOUSTON

WICHITA
CALGARY

Texas License F-8652

1415 Louisiana St, Suite 3800
Houston, Texas 77002
Tel: 713.559.9950
Fax: 713.559.9959

OWL SWD Operating Inc.

Country: USA

Well API No: 30-025-42448

Survey/STR: SEC 14-T24S-R31E

Drawn: Krystyn Strong

Rev No:

Madera SWD Well No. 1 - As Completed

State/Province: New Mexico

Project No: 2345

Formation: Devonian

Reviewed: Ramona Hovey

Notes:

County/Parish: Lea

Date: 12/10/2021

Well Type: SWD

Approved: Ramona Hovey

District I
1625 N. French Dr., Hobbs, NM 88240
Phone:(575) 393-6161 Fax:(575) 393-0720

District II
811 S. First St., Artesia, NM 88210
Phone:(575) 748-1283 Fax:(575) 748-9720

District III
1000 Rio Brazos Rd., Aztec, NM 87410
Phone:(505) 334-6178 Fax:(505) 334-6170

District IV
1220 S. St Francis Dr., Santa Fe, NM 87505
Phone:(505) 476-3470 Fax:(505) 476-3462

State of New Mexico
Energy, Minerals and Natural Resources
Oil Conservation Division
1220 S. St Francis Dr.
Santa Fe, NM 87505

CONDITIONS

Action 66363

CONDITIONS

Operator: OWL SWD OPERATING, LLC 20 Greenway Plaza Houston, TX 77046	OGRID: 308339
	Action Number: 66363
	Action Type: [C-103] Sub. Workover (C-103R)

CONDITIONS

Created By	Condition	Condition Date
kfortner	None	9/25/2023