

Well Name: SAN JUAN 27-4 UNIT	Well Location: T27N / R4W / SEC 29 / SENE / 36.547363 / -107.266983	County or Parish/State: RIO ARRIBA / NM
Well Number: 51	Type of Well: CONVENTIONAL GAS WELL	Allottee or Tribe Name:
Lease Number: NMSF080670	Unit or CA Name: SAN JUAN 27-4 UNIT--DK, SAN JUAN 27-4 UNIT--MV	Unit or CA Number: NMNM78408A, NMNM78408B
US Well Number: 3003920149	Well Status: Producing Gas Well	Operator: HILCORP ENERGY COMPANY

Notice of Intent

Sundry ID: 2754178

Type of Submission: Notice of Intent

Type of Action: Recompletion

Date Sundry Submitted: 09/29/2023

Time Sundry Submitted: 10:50

Date proposed operation will begin: 09/29/2023

Procedure Description: Record Clean-Up: Hilcorp Energy would like to amend the Recomplete NOI approved on 9/8/2023. The Mancos perforation range is amended to 7,252'-7,482'. The recompletion work was completed on 9/23/2023.

Surface Disturbance

Is any additional surface disturbance proposed?: No

NOI Attachments

Procedure Description

SJU_27_4_51_Amended_NOI_9.29.23_20230929104922.pdf

Dean R McClure

09/29/2023

Submit a C-103X requesting to amend the perforations approved in DHC-5324

Well Name: SAN JUAN 27-4 UNIT

Well Location: T27N / R4W / SEC 29 /
SENE / 36.547363 / -107.266983

County or Parish/State: RIO
ARRIBA / NM

Well Number: 51

Type of Well: CONVENTIONAL GAS
WELL

Allottee or Tribe Name:

Lease Number: NMSF080670

Unit or CA Name: SAN JUAN 27-4
UNIT--DK, SAN JUAN 27-4 UNIT--MV

Unit or CA Number:
NMNM78408A, NMNM78408B

US Well Number: 3003920149

Well Status: Producing Gas Well

Operator: HILCORP ENERGY
COMPANY

Operator

I certify that the foregoing is true and correct. Title 18 U.S.C. Section 1001 and Title 43 U.S.C. Section 1212, make it a crime for any person knowingly and willfully to make to any department or agency of the United States any false, fictitious or fraudulent statements or representations as to any matter within its jurisdiction. Electronic submission of Sundry Notices through this system satisfies regulations requiring a

Operator Electronic Signature: CHERYLENE WESTON

Signed on: SEP 29, 2023 10:49 AM

Name: HILCORP ENERGY COMPANY

Title: Operations/Regulatory Tech - Sr

Street Address: 1111 TRAVIS STREET

City: HOUSTON

State: TX

Phone: (713) 289-2615

Email address: CWESTON@HILCORP.COM

Field

Representative Name:

Street Address:

City:

State:

Zip:

Phone:

Email address:

BLM Point of Contact

BLM POC Name: KENNETH G RENNICK

BLM POC Title: Petroleum Engineer

BLM POC Phone: 5055647742

BLM POC Email Address: krennick@blm.gov

Disposition: Approved

Disposition Date: 09/29/2023

Signature: Kenneth Rennick



**HILCORP ENERGY COMPANY
SAN JUAN 27-4 UNIT 51
RECOMPLETION SUNDRY**

JOB PROCEDURES

1. MIRU service rig and associated equipment; test BOP. Check bradenhead pressures daily and record throughout the recomplete project. Notify NMOCD and BLM of any anomalous pressure changes.
2. TOOH with **2-3/8"** tubing set at **8,154'**.
3. Set a **4-1/2"** plug at +/- **7,895'** to isolate the **Dakota**.
4. Load the hole and perform MIT (Pressure test to **560 psi**). Notify NMOCD and BLM +/-24hr prior to testing (and in the event of a failed test).
5. RU W/L. Run CBL, record TOC.
6. Perforate the **Mancos** formation (Top Perforation @ **7,252'**; Bottom perforation @ **7,482'**)
7. Flow test **Mancos**.
8. Based on the **Mancos** flow test and pressures, the decision will be made whether or not to frac the **Mancos**.
9. Set a **4-1/2"** plug at +/- **6,500'**.
10. Load the hole and pressure test casing.
11. N/D BOP, N/U frac stack and pressure test frac stack.
12. Perforate and frac the **Mesaverde** formation (Top Perforation @ **5,400'**; Bottom Perforation @ **6,350'**).
13. If needed, isolate frac stages with a plug.
14. Nipple down frac stack, nipple up BOP and test.
15. Flow Test **Mesa Verde**.
16. TIH with a mill and drill out any plugs above the **Dakota** isolation plug.
17. Clean out to **Dakota** isolation plug.
18. Drill out **Dakota** isolation plug and cleanout to PBTD of **8,169'**. TOOH.
19. TIH and land production tubing. Get a commingled **Mesaverde/Mancos/Dakota** flow rate.



HILCORP ENERGY COMPANY
SAN JUAN 27-4 UNIT 51
RECOMPLETION SUNDRY

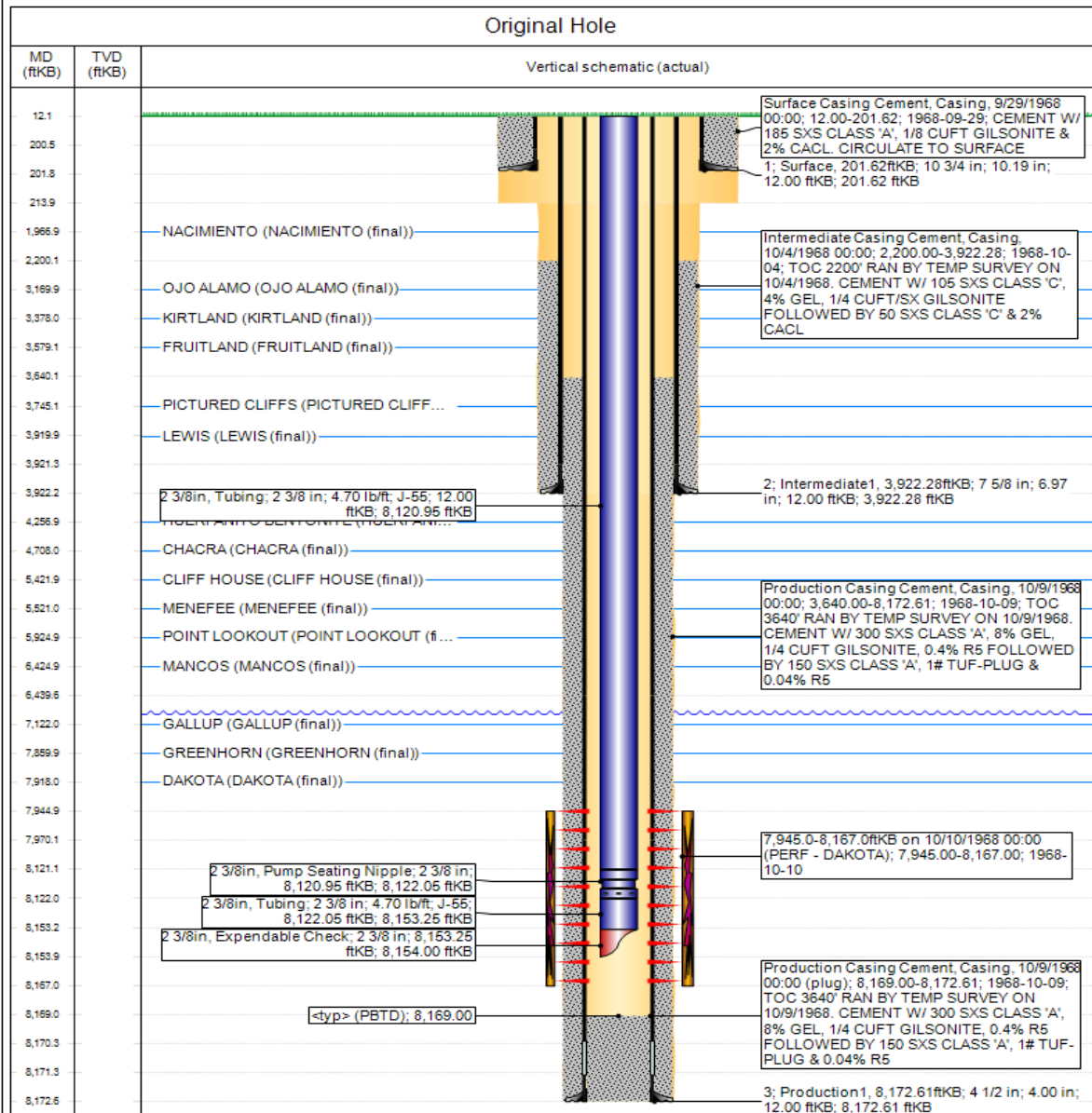
SAN JUAN 27-4 UNIT 51 - CURRENT WELLBORE SCHEMATIC



Current Schematic - Version 3

Well Name: SAN JUAN 27-4 UNIT #51

API / UWI 3003920149	Surface Legal Location 029-027N-004W-H	Field Name BASIN DAKOTA (PRORATED GAS)	Route 1401	State/Province NEW MEXICO	Well Configuration Type
Ground Elevation (ft) 6,884.00	Original KBRT Elevation (ft) 6,896.00	KB-Ground Distance (ft) 12.00	KB-Casing Flange Distance (ft)	KB-Tubing Hanger Distance (ft)	



www.peloton.com

Page 1/1

Report Printed: 5/19/2023



HILCORP ENERGY COMPANY **SAN JUAN 27-4 UNIT 51** **RECOMPLETION SUNDRY**

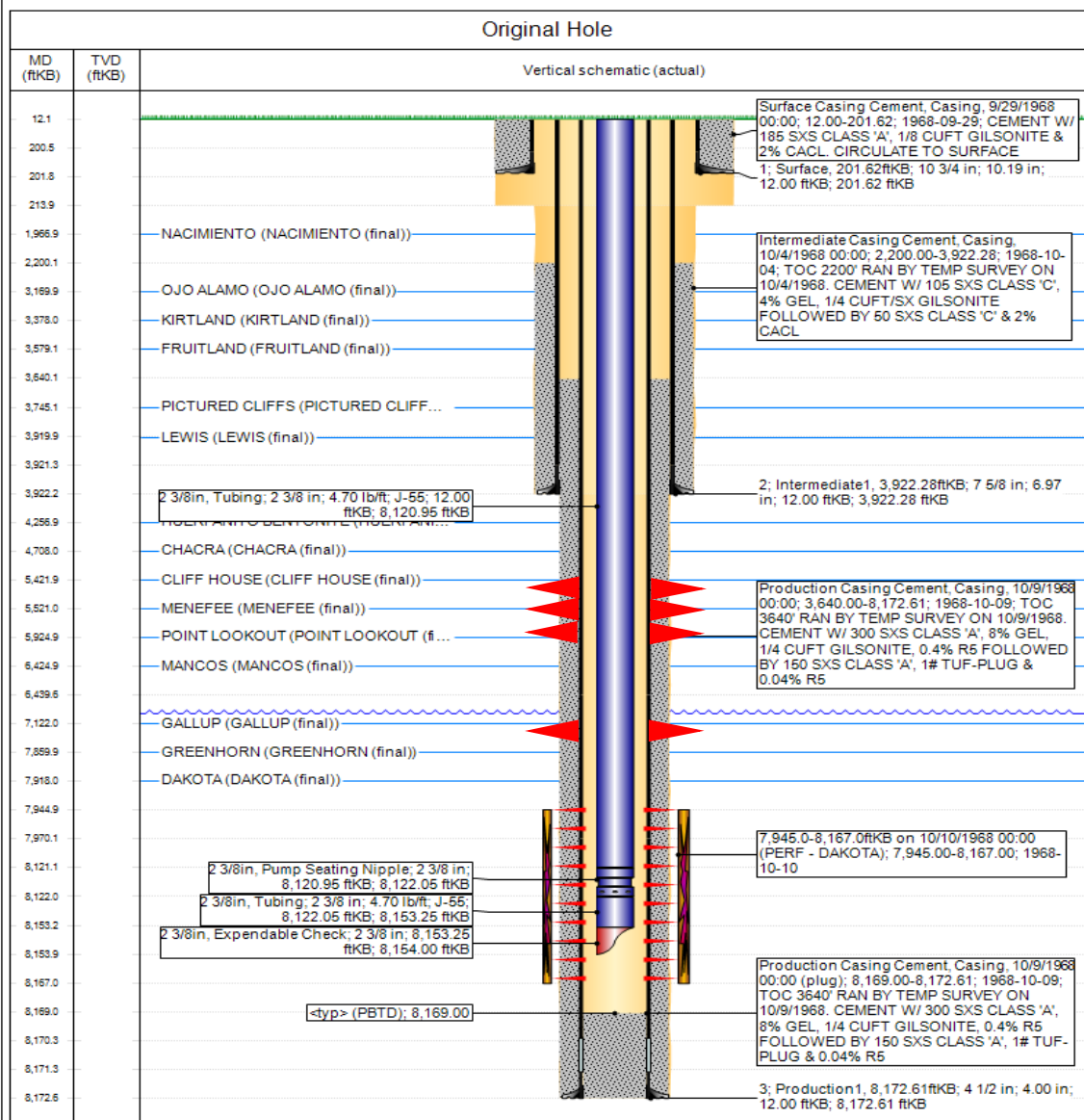
SAN JUAN 27-4 UNIT 51 - Proposed Schematic



Proposed Schematic

Well Name: SAN JUAN 27-4 UNIT #51

API / UWI 3003920149	Surface Legal Location 029-027N-004W-H	Field Name BASIN DAKOTA (PRORATED GAS)	Route 1401	State/Province NEW MEXICO	Well Configuration Type
Ground Elevation (ft) 6,884.00	Original KBRT Elevation (ft) 6,896.00	KB-Ground Distance (ft) 12.00	KB-Casing Flange Distance (ft)	KB-Tubing Hanger Distance (ft)	



www.peloton.com

Page 1/1

Report Printed: 5/19/2023

District I
1625 N. French Dr., Hobbs, NM 88240
Phone:(575) 393-6161 Fax:(575) 393-0720
District II
811 S. First St., Artesia, NM 88210
Phone:(575) 748-1283 Fax:(575) 748-9720
District III
1000 Rio Brazos Rd., Aztec, NM 87410
Phone:(505) 334-6178 Fax:(505) 334-6170
District IV
1220 S. St Francis Dr., Santa Fe, NM 87505
Phone:(505) 476-3470 Fax:(505) 476-3462

State of New Mexico
Energy, Minerals and Natural Resources
Oil Conservation Division
1220 S. St Francis Dr.
Santa Fe, NM 87505

CONDITIONS

Action 270637

CONDITIONS

Operator: HILCORP ENERGY COMPANY 1111 Travis Street Houston, TX 77002	OGRID: 372171
	Action Number: 270637
	Action Type: [C-103] NOI Recompletion (C-103E)

CONDITIONS

Created By	Condition	Condition Date
dmcclure	Submit a C-103X requesting to amend the perforations approved in DHC-5324	9/29/2023