

Submit a Copy To Appropriate District Office
District I - (575) 393-6161
1625 N. French Dr., Hobbs, NM 88240
District II - (575) 748-1283
811 S. First St., Artesia, NM 88210
District III - (505) 334-6178
1000 Rio Brazos Rd., Aztec, NM 87410
District IV - (505) 476-3460
1220 S. St. Francis Dr., Santa Fe, NM 87505

State of New Mexico
Energy, Minerals and Natural Resources

Form C-103
Revised July 18, 2013

OIL CONSERVATION DIVISION
1220 South St. Francis Dr.
Santa Fe, NM 87505

WELL API NO. 30-025-30902
5. Indicate Type of Lease STATE [x] FEE [ ]
6. State Oil & Gas Lease No.
7. Lease Name or Unit Agreement Name Maddux 17C
8. Well Number #1
9. OGRID Number 1092
10. Pool name or Wildcat Lovington-Pennsylvanian;NE (40760)
11. Elevation (Show whether DR, RKB, RT, GR, etc.)

SUNDRY NOTICES AND REPORTS ON WELLS
(DO NOT USE THIS FORM FOR PROPOSALS TO DRILL OR TO DEEPEN OR PLUG BACK TO A DIFFERENT RESERVOIR. USE "APPLICATION FOR PERMIT" (FORM C-101) FOR SUCH PROPOSALS.)
1. Type of Well: Oil Well [x] Gas Well [ ] Other [ ]
2. Name of Operator Armstrong Energy Corporation
3. Address of Operator P.O. Box 1973, Roswell, NM 88202
4. Well Location Unit Letter C : 660 feet from the North line and 2130 feet from the West line
Section 17 Township 16S Range 37E NMPM County Lea
11. Elevation (Show whether DR, RKB, RT, GR, etc.)

12. Check Appropriate Box to Indicate Nature of Notice, Report or Other Data

NOTICE OF INTENTION TO:
PERFORM REMEDIAL WORK [x] PLUG AND ABANDON [ ]
TEMPORARILY ABANDON [ ] CHANGE PLANS [ ]
PULL OR ALTER CASING [ ] MULTIPLE COMPL [ ]
DOWNHOLE COMMINGLE [ ]
CLOSED-LOOP SYSTEM [ ]
OTHER: [ ]
SUBSEQUENT REPORT OF:
REMEDIAL WORK [ ] ALTERING CASING [ ]
COMMENCE DRILLING OPNS. [ ] P AND A [ ]
CASING/CEMENT JOB [ ]
OTHER: [ ]

13. Describe proposed or completed operations. (Clearly state all pertinent details, and give pertinent dates, including estimated date of starting any proposed work). SEE RULE 19.15.7.14 NMAC. For Multiple Completions: Attach wellbore diagram of proposed completion or recompletion.

Per verbal conversation with Gilbert Cordero, OCD, on 9/26/23 AEC proposes to repair suspected parted casing in this well as follows:

- 1.RUPU on well (not currently producing)
2.TOOH w/production equipment
3.TIH w/mill and dress 5/8" offset casing looking up
4.TIH w/BP and set at ~6250'
5.TIH w/cement retainer and set at ~6150'
6.Sting into retainer and squeeze interval with class C cement, circulate clean excess
7.WOC
8.TIH w/bit and drill out retainer and cement
9.Pressure test squeeze
10.If squeeze holds, TIH w/packer and acid treat current perforations Set RBP 100' above perforations, test casing 500psi/ 30 minutes - Run CBL TD-surf. Run casing integrity log TD - surf. Review results with OCD
11:Swab test
12:Return well to rod pump
13:RDPU

Spud Date: [ ]

Rig Release Date: [ ]

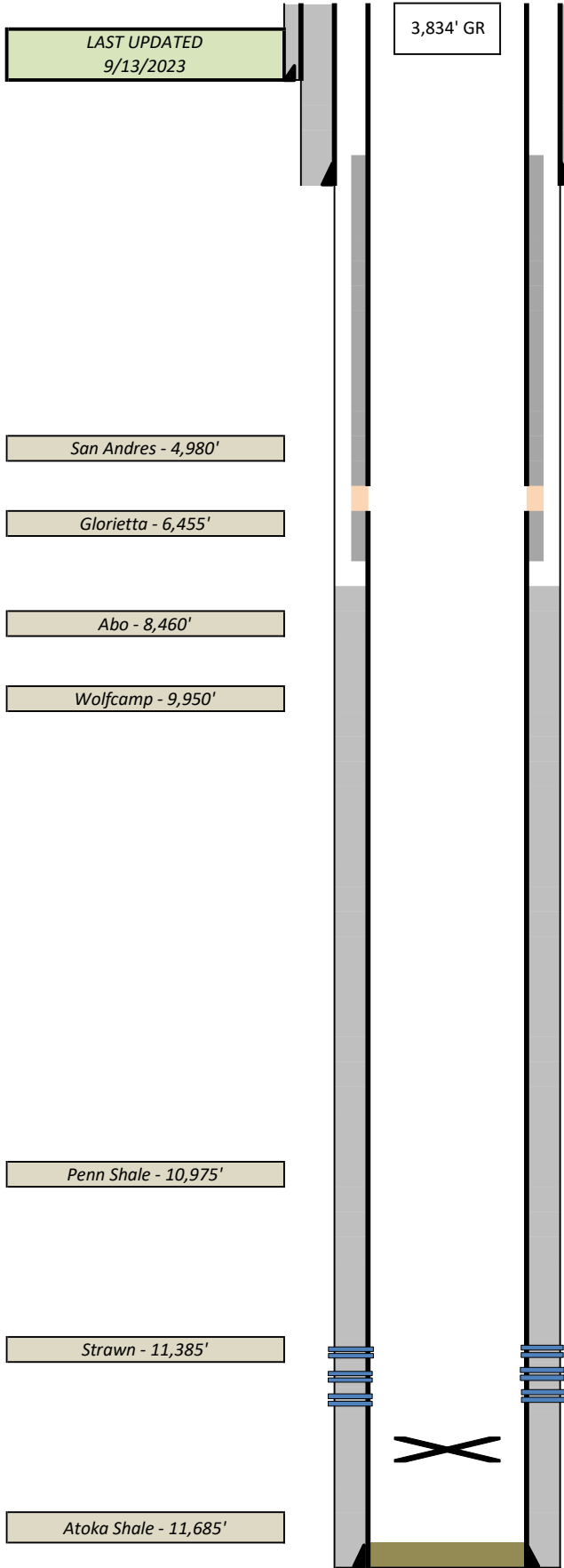
I hereby certify that the information above is true and complete to the best of my knowledge and belief.

SIGNATURE Kyle Alpers TITLE VP of Engineering DATE 9/26/23

Type or print name Kyle Alpers E-mail address: kalpers@acnm.com PHONE: 575-625-2222

For State Use Only

APPROVED BY: [ ] TITLE Staff Manager DATE 10/11/23
Conditions of Approval (if any):



17.5" hole  
 13.375" 48#/ft @ 369'  
 425sx "C"  
 11" hole  
 8<sup>5</sup>/<sub>8</sub>" 24#&32#/ft @ 4,212'  
 2235sx Lite/C CIRC  
 760 sx Cement sqz 4163'-6624' (6-2021)  
 175 sx Cement sqz 4195'-6624' (6-2021)  
 Apparent parted casing 6200' (8/2023)  
 Offset ~5/8"  
 7.875" hole  
 TOC 7820' via temp svy  
 Casing good 7623'-11340' (6/2021)  
 pitted casing 11270'-11329' (6/2021)  
 Strawn (1990)  
 11,409'-11,424' & 11,442'-11,492'  
 130 shots  
 Junk CIBP @ 11592'  
 5<sup>1</sup>/<sub>2</sub>" 17#&20#/ft @ 11,790' 810sx  
 TD 11,790' PBSD 11,671'

Armstrong Energy Corporation

**Maddux 17C #1**  
 Unit C 2130' FWL & 660' FNL  
 Section 17, T16S, R37E  
 Lea County, New Mexico

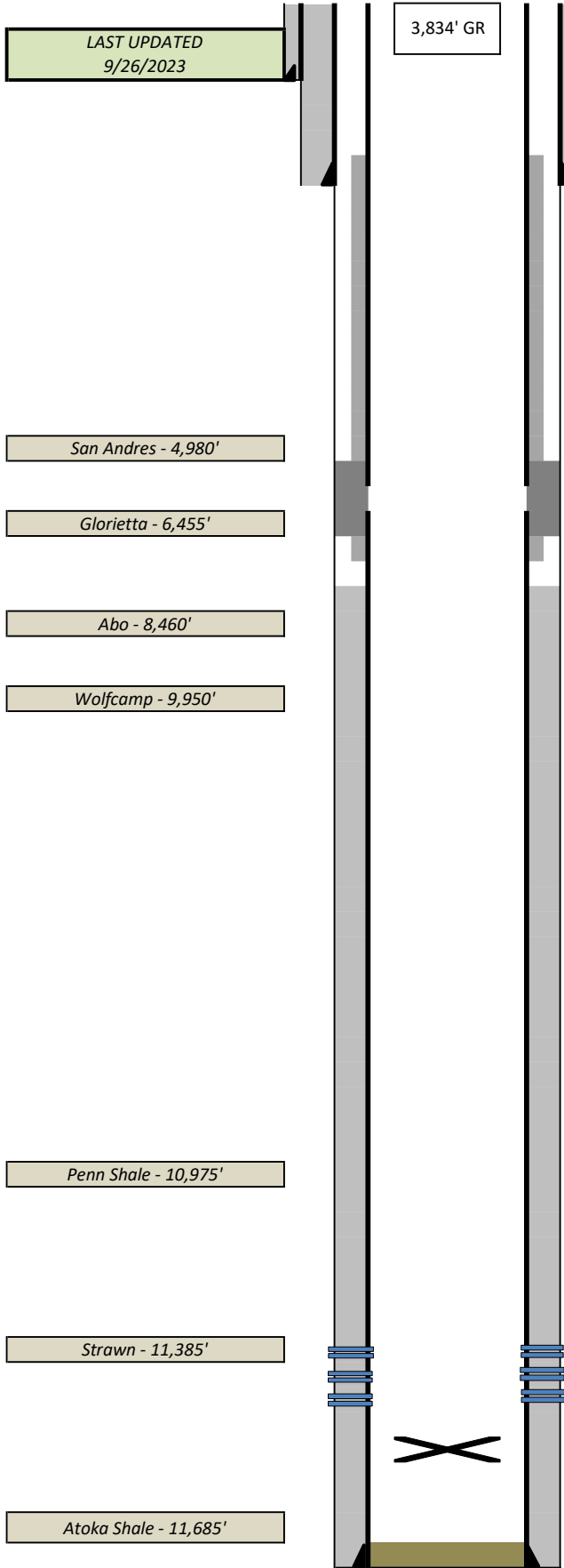
API Number **30-025-30902**  
 Spud Date: 7/18/1990  
 (Nearburg)  
 Lovington Pennsylvanian; NE  
 40760 80 ac dedicated

Downhole Production Equipment  
 MA, perf sub, SN, 6 jt 2 3/8" L80,  
 TAC, 355 jts 2 3/8" L80.

Surface Production Equipment

Notes  
 8/19/90 - Strawn DST 11395'-11445'  
 8/21/90 - Strawn DST 11450'-11495'  
 2/20/06 - communication between 5.5'  
 and surface pipe. Sqz @ 4262'-4293'  
 11/1/2019 - Acquired by AEC, rod  
 pumping under packer at the time  
 6/15/2021 - Multiple squeezes from  
 4163'-6624' in order to get out from  
 pumping under packer  
 8/24/2023 - RU for acid job in response  
 to production drop, determined parted  
 casing @ 6200' via impression block.  
 Offset ~5/8"

Strawn (1990)	STIMULATION
11,409'-11,424' & 11,442'-11,492' 130 shots	5000gal 15% NEFE gelled acid w/200 ball sealers



17.5" hole  
 13.375" 48#/ft @ 369'  
 425sx "C"  
 11" hole  
 8<sup>5</sup>/<sub>8</sub>" 24#&32#/ft @ 4,212'  
 2235sx Lite/C CIRC  
 760 sx Cement sqz 4163'-6624' (6-2021)  
 175 sx Cement sqz 4195'-6624' (6-2021)  
 SQUEEZE PARTED CASING@ 6200', DRILL OUT, TEST  
 7.875" hole  
 TOC 7820' via temp svy  
 Casing good 7623'-11340' (6/2021)  
 pitted casing 11270'-11329' (6/2021)  
 Strawn (1990)  
 11,409'-11,424' & 11,442'-11,492'  
 130 shots  
 Junk CIBP @ 11592'  
 5<sup>1</sup>/<sub>2</sub>" 17#&20#/ft @ 11,790' 810sx  
 TD 11,790' PBSD 11,671'

Armstrong Energy Corporation

**Maddux 17C #1**  
 Unit C 2130' FWL & 660' FNL  
 Section 17, T16S, R37E  
 Lea County, New Mexico

API Number **30-025-30902**  
 Spud Date: 7/18/1990  
 (Nearburg)  
 Lovington Pennsylvanian; NE  
 40760 80 ac dedicated

Downhole Production Equipment  
 MA, perf sub, SN, 6 jt 2 3/8" L80,  
 TAC, 355 jts 2 3/8" L80.

Surface Production Equipment

Notes  
 8/19/90 - Strawn DST 11395'-11445'  
 8/21/90 - Strawn DST 11450'-11495'  
 2/20/06 - communication between 5.5'  
 and surface pipe. Sqz @ 4262'-4293'  
 11/1/2019 - Acquired by AEC, rod  
 pumping under packer at the time  
 6/15/2021 - Multiple squeezes from  
 4163'-6624' in order to get out from  
 pumping under packer  
 8/24/2023 - RU for acid job in response  
 to production drop, determined parted  
 casing @ 6200' via impression block.  
 Offset ~5/8"

Strawn (1990)	STIMULATION
11,409'-11,424' & 11,442'-11,492' 130 shots	5000gal 15% NEFE gelled acid w/200 ball sealers

**District I**  
 1625 N. French Dr., Hobbs, NM 88240  
 Phone:(575) 393-6161 Fax:(575) 393-0720

**District II**  
 811 S. First St., Artesia, NM 88210  
 Phone:(575) 748-1283 Fax:(575) 748-9720

**District III**  
 1000 Rio Brazos Rd., Aztec, NM 87410  
 Phone:(505) 334-6178 Fax:(505) 334-6170

**District IV**  
 1220 S. St Francis Dr., Santa Fe, NM 87505  
 Phone:(505) 476-3470 Fax:(505) 476-3462

**State of New Mexico**  
**Energy, Minerals and Natural Resources**  
**Oil Conservation Division**  
**1220 S. St Francis Dr.**  
**Santa Fe, NM 87505**

CONDITIONS

Action 269309

**CONDITIONS**

Operator: ARMSTRONG ENERGY CORP P.O. Box 1973 Roswell, NM 88202	OGRID: 1092
	Action Number: 269309
	Action Type: [C-103] NOI Workover (C-103G)

**CONDITIONS**

Created By	Condition	Condition Date
gcordero	Must run CBL and Pipe Inspection log	10/11/2023