

Well Name: MARSHA BINGHAM	Well Location: T26N / R3W / SEC 27 / NENE / 36.4636323 / -107.1242763	County or Parish/State: RIO ARRIBA / NM
Well Number: 1	Type of Well: OIL WELL	Allottee or Tribe Name: JICARILLA APACHE
Lease Number: JIC117	Unit or CA Name:	Unit or CA Number:
US Well Number: 3003924052	Well Status: Abandoned	Operator: DJR OPERATING LLC

Operator

I certify that the foregoing is true and correct. Title 18 U.S.C. Section 1001 and Title 43 U.S.C. Section 1212, make it a crime for any person knowingly and willfully to make to any department or agency of the United States any false, fictitious or fraudulent statements or representations as to any matter within its jurisdiction. Electronic submission of Sundry Notices through this system satisfies regulations requiring a

Operator Electronic Signature: SHAW-MARIE FORD

Signed on: OCT 03, 2023 10:21 AM

Name: DJR OPERATING LLC

Title: Regulatory Specialist

Street Address: 1 ROAD 3263

City: AZTECState: NM

Phone: (505) 632-3476

Email address: SFORD@DJRLLC.COM

Field

Representative Name:

Street Address:

City:State:Zip:

Phone:

Email address:

BLM Point of Contact

BLM POC Name: MATTHEW H KADE

BLM POC Title: Petroleum Engineer

BLM POC Phone: 5055647736

BLM POC Email Address: MKADE@BLM.GOV

Disposition: Accepted

Disposition Date: 10/04/2023

Signature: Matthew Kade

DJR Operating, LLC
P&A End of Well Report
Marsha Bingham 1
API # 30-039-24052
NE/NE, Unit A. Sec 27, T26N, R3W
Rio Arriba County, NM
Spud Date: 6-27-1987
Plug Date: 8-31-2023

8-15-2023:

MIRU rig and equipment. SITP = 5, SICP = 10, BH = 0. Start pulling rods, waiting on hot oil unit. MI hot oil unit. Pump 40 bbl 240 deg water down tbg.

8-16-2023:

SITP = 0, SICP = 10, BH = 0. Finish pulling rods and pump. Unset TAC. ND WH, NU BOP. TOOHH with 2 3/8" production string, pulled 165 jts tbg, SD due to weather.

8-17-2023:

SITP = 0, SICP = 0, BH = 0. Continue TOOHH and LD 2 3/8" production string. MIRU air unit. MU junk mill with 4 – 3 1/8" drill collars on 2 3/8" workstring. Tally and TIH, tagged up at 7730'. Pull up 2 jts.

Hook up power swivel, flowback lines to flow back tank. SDFN.

8-18-2023:

Start pumping air, 1400 scfm, 12 bbl water, 2 gal foamer, 1 gal inhibitor per hr at 300 psi. Cleaned out to CIBP at 7796'. Started milling on CIBP. Milled 1.5 ft, well started blowing Dakota gas, milled for another 2 hours with no progress. Decided to SDFWE. Pulled up above Mancos perforations to 6769'.

8-21-2023:

TIH to 7797.5'. Start air unit, unload hole. Milled on CIBP to 7803'. Milling and beating, stopped making progress at 7803'. Pump 5 bbl kill, TOOHH. Mill damaged and cut-right worn off as if milling on something very hard. The obstruction is not milling up as a CIBP should. Sent photos of mill to office. SDFN.

8-22-2023:

SITP = 0, SICP = 16, BH = 0. MU new mill on drill collars and 2 3/8" workstring, TIH to 7803'. Start air unit, unload hole. Milled on "obstruction" to 7803', milled to 7805', not making any more progress. Milling and beating on obstruction, mist pump quit, pulled up hole above Mancos perforations to 6834', pump 5 bbl kill, SDFN.

8-23-2023:

SITP = 16, SICP = 6, BH = 0. Replace mist pump on air unit. TIH to 7777', unload well with air/foam. Start at 950 psi, establish circulation at 850 psi. TIH to 7805', start milling on obstruction again. Pumping 1400 scfm, with 12 bbl water, 2 gal foamer and 2 gal inhibitor per hr at 350 psi. Made 0.5' progress in 4 hr. Pull up hole to 6834'. Pump 5 bbl kill, SDFN.

8-24-2023:

SITP = 5, SICP = 50, BH = 0. TOOHH with workstring and mill. Mill badly damaged as before, cut-right worn off as if milling on something very hard. Sent photos of this mill to office. Decision made by DJR office to TIH with a packer to determine if we can pump around or through obstruction into the Dakota perforations. MU and TIH with 5 1/2" AS -1 packer on 2 3/8" workstring to 7690'. Set packer. Load tbg and attempt to pump around obstruction, pressured up to 1500 psi, pressure bleeds off in 15 minutes. Repeated the pumping several times with the same bleed off. Attempt to unset packer for 3 hrs. Could not unset packer. SDFN.

8-25-2023:

SITP = 0, SICP = 0, BH = 0. Continue to attempt to release packer. RIH with wireline, perforated 4 holes at 7688'. The holes in tubing equalized hydrostatic head, allowing the packer to be unset. TOO H with 2 3/8" workstring and packer.

Discussed well conditions with DJR office, BLM and NMOCD. Approval obtained from BLM and NMOCD to discontinue milling operations and place the first P&A plug above the obstruction. The P&A Plug 1 will consist of 25 sx Class G cement placed from 7805' to 7629'. SDFWE.

8-28-2023:

Plug 1: Dakota and Gallup: Mix and spot plug of 25 sx from 7805'. Pull up hole, WOC. TIH, tagged cement "bridge" at 7213'. Obtained approval from BLM and NMOCD to move on to Plug 2.

8-29-2023:

TIH with cement retainer, set retainer at 7070'. Load and roll hole. PT casing, good test.

Plug 2: Mancos and Gallup perforations: Attempt to pump through retainer, could not. Obtained approval from BLM and NMOCD to spot Plug 2 above retainer. Mix and spot a balanced plug of 14 sx from 7070'. TOO H. WOC.

RIH and run CBL from 6800' to surface. TOC ; Stage 1 = 6290', Stage 2 = 250'. POOH.

8-30-2023:

TIH, tagged Plug 2 at 7009'. Pull up to 6418'.

Plug 3: Mancos formation top: Mix and spot a balanced plug of 17 sx from 6418' to 6268'. Pull up to 5750'.

Plug 4: Mesa Verde formation top: Mix and spot a balanced plug of 17 sx from 5750' to 5600'. Pull up to 4620'.

Plug 5: Chacra formation top: Mix and spot a balanced plug of 17 sx from 4620' to 4470'. Pull up to 3994'.

Plug 6: Pictured Cliffs, Fruitland Kirtland and Ojo Alamo formation tops: Mix and spot a balanced plug of 55 sx from 3994' to 3508'.

Pull up to 1927'.

Plug 7: Nacimiento formation top: Mix and spot a balanced plug of 17 sx from 1927' to 1777'. TOO H.

8-31-2023:

TIH with 5 1/2" CIBP. Set CIBP at 390'. TOO H.

RIH, perforate holes at 245', (TOC at 250'). POOH..

Establish circulation through perforations and out BH.

Plug 8: From top of CIBP to perforations at 245'. TIH to 390'. Mix and spot balanced plug of 16 sx on top of CIBP. TOO H.

NDBOP, NU WH. Establish circulation down casing and out BH.

Plug 9: from 245', inside outside to surface and out BH. Mix and pump plug of 115 sx down casing and out BH, good cement returns out BH.

Cut off WH, TOC at 24' in surface casing and at 65' in 5 1/2" casing.

Install P&A marker, Top off casing, and cellar with 40 sx.

All cement used was Class G mixed at 15.8 ppg, yield 1.15 cu ft/sx.

Regulatory representative; Orin Sandoval, Jicarilla BLM

GPS Coordinates: Lat; 36.46366 N, Long; 107.12480 W

DJR Operating, LLC
P&A Marker
Marsha Bingham 1
API # 30-039-24052
NE/NE, Unit A. Sec 27, T26N, R3W
Rio Arriba County, NM
Spud Date: 6-27-1987
Plug Date: 8-31-2023





United States Department of the Interior

BUREAU OF INDIAN AFFAIRS

Jicarilla Agency

P.O. Box 167

Dulce, New Mexico 87528

IN REPLY REFER TO:

Branch of Real Estate Services

November 15, 2019

Memorandum

To: Robert Switzer, Environmental Protection Specialist
Bureau of Land Management, Farmington Field Office

From: Kurt Sandoval, Realty Officer
Bureau of Indian Affairs, Jicarilla Agency

Subject: BIA Concurrence concerning Well Pad Monument Makers

Let this serve as concurrence for the agreed upon preferred method to be used when constructing well pad monument markers on Jicarilla Apache Tribal Lands. We will eliminate the 6 ft. dry hole marker and use a permanent metal plate that will be installed at ground level, effective September 2019. The marker will contain the following information:

- Well Pad Lease Number
- Well Pad Location Name and Number
- Well Pad Legal Description, specifically Section, Township and Range
- Well Pad API Number
- Well Pad Plug Date
- Well Pad Operator Name

You may contact our office if you have any questions or concerns at (575) 759-3936. Thank you.


Realty Officer

cc: Jicarilla Oil and Gas Administration

12" x 18" MINIMUM

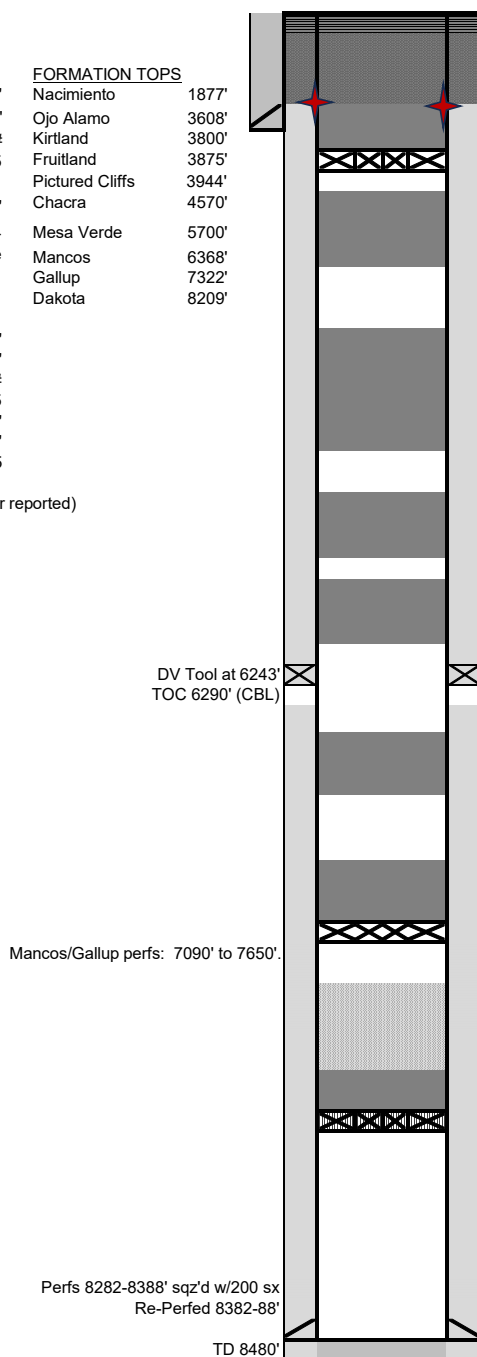
**End of Well Report
DJR Operating, LLC
Marsha Bingham 1**

API # 30-039-24052
NE/NE, Unit A, Sec 27, T26N, R3W
Rio Arriba County, NM

GL 7404'
KB 7416'
Spud Date 6/27/1987

SURF CSG		FORMATION TOPS	
Hole size	12.25"	Nacimiento	1877'
Csg Size:	9.625"	Ojo Alamo	3608'
Wt:	36#	Kirtland	3800'
Grade:	J-55	Fruitland	3875'
ID:	8.921	Pictured Cliffs	3944'
Depth	336'	Chacra	4570'
Csg cap ft3:	0.434	Mesa Verde	5700'
TOC:	Surface	Mancos	6368'
		Gallup	7322'
		Dakota	8209'

PROD CSG	
Hole size	8.75"
Csg Size:	5.5"
Wt:	17#
Grade:	K-55
ID:	4.892"
Depth	8468'
Csg cap ft3:	0.1305
TOC Stg 1:	6290' (CBL)
TOC Stg 2:	250' (TS-operator reported)



8-31-2023: Cut off WH. TOC, 24' in 9 5/8" casing, 65' in 5 1/2" casing. Install P&A marker. Top off casing and cellar with 40 sx.

8-31-2023: Plug 9: 245' to surface inside/outside. NDBOP, NUWH. Establish rate down csg and out BH. Mix and pump plug of 115 sx down csg and out BH, good cement returns out BH.

8-31-2023: Plug 8: 390' to 245'. Perforate holes at 245', (TOC at 250'). Establish circulation down csg and out BH. TIH to 390', mix and spot balanced plug of 16 sx above CIBP, TOOH.

8-31-2023: Set CIBP @ 390'.

8-30-2023: Plug 7: Nacimiento formation top: Spot balanced plug of 17 sx from 1927-1777'. TOOH.

8-30-2023: Plug 6: Pictured Cliffs, Fruitland, Kirtland, and Ojo Alamo formation tops: Spot balanced plug of 55 sx from 3994' to 3508'. Pull up to 1927'.

8-30-2023: Plug 5: Chacra formation top: Spot balanced plug of 17 sx from 4620' to 4470'. Pull up to 3994'.

8-30-2023: Plug 4: Mesa Verde formation top: Spot balanced plug of 17 sx from 5750' to 5600'. Pull up to 4620'.

8-30-2023: Plug 3: Mancos formation top: Spot balanced plug of 17 sx from 6418' to 6268'. Pull up to 5750'.

8-30-2023: Tagged Plug 2 at 7009'.

8-29-2023: Run CBL from 6800' to surface. Stage 1 TOC = 6290', Stage 2 TOC = 250'.

8-29-2023: Plug 2: Mancos/Gallup perforations: Set CR at 7070'. Load and roll hole. PT casing, good test. Attempt to pump through CR, could not. Obtained approval from BLM and NMOCD to spot cement above CR. Mix and spot 14 sx cement above CR. WOC.

8-28-2023: Plug 1: Dakota/Gallup: Mix and spot a plug of 25 sx from 7805'. Pull up hole, WOC. Tagged cement "bridge" at 7213'. BLM and NMOCD approved Plug 1 "as is".

8-17-2023 to 8-25-2023: Dakota perforations and formation top: TIH with mill, tagged fill at 7730'. Cleaned out to 7796'. Milled on "CIBP" at 7796' to 7803', ruined 1 mill, TOOH, TIH with new mill, milled to 7805', ruined 2nd mill. Does not appear to be a CIBP. TOOH. 8-24 and 25-2023: TIH with packer to determine if cement could be pumped through or around "CIBP". Set packer at 7690', could not establish injectivity. TOOH with packer. 8-25-2023: Obtained approval from BLM and NMOCD to stop milling operations and spot a 25 sx cement plug above "CIBP" from 7805' and continue P&A operations..

All cement used was Class G mixed at 15.8 ppg, yield 1.15 cu ft/sx
Regulatory representative: Orin Sandoval, Jicarilla BLM
GPS Coordinates: Lat; 36.46366 N, Long 107.12480 W

District I
1625 N. French Dr., Hobbs, NM 88240
Phone:(575) 393-6161 Fax:(575) 393-0720
District II
811 S. First St., Artesia, NM 88210
Phone:(575) 748-1283 Fax:(575) 748-9720
District III
1000 Rio Brazos Rd., Aztec, NM 87410
Phone:(505) 334-6178 Fax:(505) 334-6170
District IV
1220 S. St Francis Dr., Santa Fe, NM 87505
Phone:(505) 476-3470 Fax:(505) 476-3462

State of New Mexico
Energy, Minerals and Natural Resources
Oil Conservation Division
1220 S. St Francis Dr.
Santa Fe, NM 87505

CONDITIONS

Action 272210

CONDITIONS

Operator: DJR OPERATING, LLC 1 Road 3263 Aztec, NM 87410	OGRID: 371838
	Action Number: 272210
	Action Type: [C-103] Sub. Plugging (C-103P)

CONDITIONS

Created By	Condition	Condition Date
mkuehling	well plugged 8/31/2023	10/27/2023