

Well Name: HOYT	Well Location: T26N / R4W / SEC 5 / NWSW / 36.5137791 / -107.2780205	County or Parish/State: RIO ARRIBA / NM
Well Number: 2	Type of Well: CONVENTIONAL GAS WELL	Allottee or Tribe Name: JICARILLA APACHE
Lease Number: JIC119	Unit or CA Name:	Unit or CA Number:
US Well Number: 3003906690	Well Status: Abandoned	Operator: HILCORP ENERGY COMPANY

Subsequent Report

Sundry ID: 2759306

Type of Submission: Subsequent Report

Date Sundry Submitted: 11/02/2023

Date Operation Actually Began: 10/02/2023

Type of Action: Plug and Abandonment

Time Sundry Submitted: 09:23

**Actual Procedure:** The subject well was P&A'd on 10/17/2023 per the attached report. A surface plate was used as the P&A marker located at Lat 36.513779, Long -107.278021. See attached photo.

SR Attachments

- Actual Procedure
- HILCORP\_HOYT\_\_2\_CBL\_20231102092220.pdf

HOYT\_2\_P\_A\_Subsequent\_20231102092203.pdf

Well Name: HOYT	Well Location: T26N / R4W / SEC 5 / NWSW / 36.5137791 / -107.2780205	County or Parish/State: RIO ARRIBA / NM
Well Number: 2	Type of Well: CONVENTIONAL GAS WELL	Allottee or Tribe Name: JICARILLA APACHE
Lease Number: JIC119	Unit or CA Name:	Unit or CA Number:
US Well Number: 3003906690	Well Status: Abandoned	Operator: HILCORP ENERGY COMPANY

Operator

I certify that the foregoing is true and correct. Title 18 U.S.C. Section 1001 and Title 43 U.S.C. Section 1212, make it a crime for any person knowingly and willfully to make to any department or agency of the United States any false, fictitious or fraudulent statements or representations as to any matter within its jurisdiction. Electronic submission of Sundry Notices through this system satisfies regulations requiring a

Operator Electronic Signature: TAMMY JONES	Signed on: NOV 02, 2023 09:22 AM
Name: HILCORP ENERGY COMPANY	
Title: Regulatory Compliance Specialist	
Street Address: 382 ROAD 3100	
City: AZTEC	State: NM
Phone: (505) 324-5185	
Email address: TAJONES@HILCORP.COM	

Field

Representative Name:		
Street Address:		
City:	State:	Zip:
Phone:		
Email address:		

BLM Point of Contact

BLM POC Name: MATTHEW H KADE	BLM POC Title: Petroleum Engineer
BLM POC Phone: 5055647736	BLM POC Email Address: MKADE@BLM.GOV
Disposition: Accepted	Disposition Date: 11/02/2023
Signature: Matthew Kade	

HOYT 2

JIC119

30.039.06690

PLUG &amp; ABANDON

**10/2/2023** – MIRU. CK PRESSURES. SITP - 0#. SICP - 0#. BH - 0#. BDW, 0 MIN. RUN SLICKLINE, LATCHED ONTO BUMPER SPRING @ 8262'. WORK STUCK SL. DROP CUTTING TOOL. SL FREE. TOO. RUN & SET 3-SLIP STOP @ 8243'. PERF TBG @ 8242'. TOO. RD SLICKLINE. SIW. SDFN.

**10/3/2023** – CK PRESSURES. SITP - 0#. SICP - 0#. BH - 0#. BDW, 0 MIN. ND WH. NU BOP & FUNCTION TEST. RU RIG FLOOR. PULL TBG HANGER, 40K SW, TOO. WITH 2.375" TBG. TIH w/50 STDS OF 2.375" TBG. LD 2.375" 4.7# TBG. SIW. SDFN.

**10/5/2023** – CK PRESSURES. SITP - 0#. SICP - 0#. BH - 0#. BDW, 0 MIN. SPOT IN TBG TRAILER. PREP TBG FOR P/U. MU 4-3/4" BIT AND 5.5" SCRAPER. TALLY, STRAP, DRIFT & PU 2.375" 4.7# TBG TO 8190'. TOO. W/TBG & LD BIT & SCRAPER. SIW. SDFN.

**10/6/2023** – CK PRESSURES. SITP - 0#. SICP - 0#. BH - 0#. BDW, 0 MIN. M/U CICR. TIH, SET CICR @ 8184'. ESTABLISH INJECTION RATE BELOW CICR @ 900#, 1.4 BPM. PUMP 20 BBLs. **CEMENT PLUG #1 (CIBP, DAKOTA TOP)** 31 SX 7.5 BBL, 1.37, 14.8#, 6.64 GAL/SX TOC @ 8034', BOC @ 8264'. 15 SKS ABOVE, AND 16 SKS BELOW CICR, DISPLACE 31 BBL. LD 5 JTS TOO. 128 STDS 2.375" TUBING. WOC. **(JICARILLA APACHE REP ON LOCATION GERAMIE HAVENS)**. SIW. SDFN.

**10/10/2023** – CK PRESSURES. SITP - 0#. SICP - 0#. BH - 0#. BDW, 0 MIN. M/U TAG SUB, TIH WITH 2.375" TBG, TAG PLUG #1 @ 7797', L/D 5 JTS. **(JICARILLA APACHE REP ON LOCATION GERAMIE HAVENS APPROVED TAG)** TOO. 122 STDS OF 2.375" TBG. L/D TAG SUB. TIH, SET CICR #2 @ 7690', PUMP 160 BBLs @ 900#, 2.4 BPM. R/U SLICKLINE, RIH AND TAG ESTIMATED TOP OF WATER @ 1100'. R/D SLICKLINE. **CEMENT PLUG #2 (GALLUP)** 20 SX 4.8 BBL, 1.37, 14.8#, 6.64 GAL/SX TOC @ 7490', BOC @ 7690'. DISPLACE 25.5 BBL, LD 7 JTS TOO. 119 STDS OF 2.375" TBG. L/D SETTING TOOL. **(JICARILLA APACHE REP ON LOCATION GERAMIE HAVENS)** SIW. SDFN.

**10/11/2023** – CK PRESSURES. SITP - 0#. SICP - 0#. BH - 0#. BDW, 0 MIN. M/U TAG SUB, TIH W/TBG, TAG PLUG #2 @ 7461', L/D 23 JTS. R/U SLICKLINE, RIH AND TAG ESTIMATED TOP OF WATER @ 1200'. R/D SLICKLINE. PUMP 27 BBLs FW DOWN TBG, NO CIRCULATION. **CEMENT PLUG #3 (MANCOS)** 20 SX 4.8 BBL, 1.37, 14.8#, 6.64 GAL/SX TOC @ 6523', BOC @ 6723'. DISPLACE 21.3 BBL, LD 7 JTS TOO. 104 STDS. TIH WITH 65 STDS OF 2.375" TBG TO 4069'. WOC. TIH 39 STDS, TAG PLUG #3 @ 6521'. L/D 17 JTS. TOO. 96 STDS OF 2.375" TBG. SIW. SDFN. **(JICARILLA APACHE REP ON LOCATION GERAMIE HAVENS)** RECEIVED VERBAL APPROVAL FROM KENNY RENNICK, BLM & MONICA KUEHLING, NMOCD TO RUN CBL IN THE 8-5/8" CSG FROM LNR TOP @ 4209' TO SURFACE BASED ON THE HISTORICAL CMT REPORTS (SEE ATTACHED EMAILS).

**10/12/2023** – CK PRESSURES. SITP - 0#. SICP - 0#. BH - 0#. BDW, 0 MIN. MU 5.5" CICR #3, TIH 96 STDS. SET CICR @ 6042'. L/W 103 BBLs, PUMP 230 BBLs. P/T 600PSI AND FAILED TEST. **CEMENT PLUG #4 (CICR)** 20 SX 4.8 BBL, 1.37, 14.8#, 6.64 GAL/SX. TOC @ 5842', BOC @ 6042'. DISPLACE 22.6 BBL, LD 7 JTS TOO. 93 STDS. L/D STINGER, M/U TAG SUB, TIH WITH 66 STDS OF 2.375" TBG TO 4,069'. WOC. TIH 27 STDS, TAG PLUG #4 @ 5,870'. L/D 5 JTS. L/W 10 BBLs PUMP 12 BBLs. P/T 600 PSI & FAILED. **CEMENT PLUG #5 (CLIFFHOUSE)** 24 SX 5.9 BBL, 1.37, 14.8#, 6.64 GAL/SX. TOC @ 5490', BOC @ 5740'. DISPLACE 21.2 BBL, LD 9 JTS. R/O 26 BBLs FW. TOO. 12 STDS OF 2.375" TBG. SIW. SDFN. **(JICARILLA APACHE REP ON LOCATION GERAMIE HAVENS)**

HOYT 2

JIC119

30.039.06690

PLUG &amp; ABANDON

**10/13/2023** – CK PRESSURES. SITP – 0#. SICP – 0#. BH – 0#. BDW, 0 MIN. TIH 12 STDS OF 2.375" TBG. TAG #6 CEMENT PLUG @ 5517'. L/D 17. L/W 19 BBLS OF FW, PUMP 22. PT 600PSI, FAILED. **CEMENT PLUG #6 (CHACRA)** 20 SX 4.8 BBL, 1.37, 14.8#, 6.64 GAL/SX, TOC @ 4824', BOC @ 5024'. DISPLACE 18.6 BBL, LD 7 JTS. TOO H 76 STDS OF 2.375" TBG. WOC. RU W/L, **RUN CBL, 4218' TO SURFACE.** POOH RD W/L. TIH 76 STDS OF 2.375" TBG. TAG #6 CEMENT PLUG @ 4867'. L/D 20 JTS. L/W 3.5 BBLS OF FW, PUMP 5 BBLS. PT 600PSI AND FAILED. **CEMENT PLUG #7** WITH 50 SKS AWAY. HAD WATER LINE PLUG UP WHILE MIXING CEMENT ON PUMP TRUCK. SHUT DOWN, R/O 33 TO CLEAR CEMENT OUT TBG. TOO H 12 STDS. WORKED ON CEMENT TRUCK. TIH TO 4259'. **CEMENT PLUG #7 (LINER, FRD, PC)** 135 SX 32.9 BBL, 1.37, 14.8#, 6.64 GAL/SX, TOC @ 3687', BOC @ 4259'. DISPLACE 14.2 BBL, L/D 19 JTS. TOO H 58 STDS OF 2.375" TBG. **(JICARILLA APACHE REP ON LOCATION JARED BENALLY)** SIW. SDFN.

**10/16/2023** – CK PRESSURES. SITP – 0#. SICP – 0#. BH – 0#. BDW, 0 MIN. TIH 58 STDS OF 2.375" TBG. TAG #7 CEMENT PLUG @ 3707'. L/D 12 JTS. L/W 44 BBLS OF FW, PUMP 50 BBLS. PT 600PSI AND FAILED. **CEMENT PLUG #8 (KIRTLAND)** 90 SX 21.9 BBL, 1.37, 14.8#, 6.64 GAL/SX. TOC @ 3346', BOC @ 3707'. DISPLACE 12.9 BBL, L/D 12 JTS. TOO H 52 STDS OF 2.375" TBG. WOC. ND BOP. M/U 8 5/8 SCRAPER. STRIP OVER. NU BOP. FUNCTION TEST BOP. WOC. TIH & TAG CEMENT PLUG # 8 @ 3417'. L/D 35 JTS. TOO H 37 STDS OF 2.375" TBG. ND BOP, L/D 8 5/8 SCRAPER. NU BOP AND FUNCTION TEST BOP. RU WL, RIH, PERF @ 2410', POOH, LW .5 BBL, PUMP 2 BBLS. LOCK UP AT 1000 PSI. TIH 37 STDS OF 2.374" TBG TO 2320'. SIW. SDFN. **(JICARILLA APACHE REP ON LOCATION GERAMIE HAVENS)**

**10/17/2023** – CK PRESSURES. SITP – 0#. SICP – 0#. BH – 0#. BDW, 0 MIN. P/U 4 JTS OF 2.375" TBG TO 2460'. **CEMENT PLUG #9 (NACIMIENTO)** 62 SX 15.2 BBL, 1.37, 14.8#, 6.64 GAL/SX, TOC @ 2210', BOC @ 2460'. DISPLACE 8.5 BBL, L/D 8 JTS. R/O 15 BBLS. **(JICARILLA APACHE REP ON LOCATION GERAMIE HAVENS, ALSO APPROVED FOR INSIDE PLUG BY REP)** TOO H 12 STDS OF 2.375" TBG. WOC. TIH 12 STDS TAG #9 CEMENT PLUG @ 2295'. LD 73 JTS OF 2.375" TBG. LW 4 BBLS, PUMP 6 BBLS. P/T 600 PSI AND PASSED. RU WL, RIH, PERF @ 275', POOH, LW 24 BBL, PUMP 50 BBL **(BLM & JICARILLA REP APPROVE TO PERF AT 275')** **CEMENT PLUG #10 (SURFACE SHOE)** 177 SX 1.37, 14.8#, 6.64 GAL/SX, TOC @ 0', BOC @ 275'. RD RIG FLOOR. ND BOP. PREP TO CUT OFF WH (W.O.C.). **(NOTIFIED NMOCD MONICA KUEHLING AND BLM OF RIG MOVE FROM HOYT #2 TO SAN JUAN 27-4 UNIT 119)** CUT OFF WH - (TOC IN 8 5/8" 23'/TOC 13 3/8" 0') WELD ON P&A MARKER. FILL CASING AND CELLAR WITH 25 SX CEMENT. RIG DOWN RIG AND EQUIPMENT. (RIG RELEASED @ 21:00 10/17/23).

**GERAMIE HAVENS, JICARILLA APACHE BIA INSPECTOR WITNESSED PLUGGING OPERATIONS.**

**Tammy Jones**

---

**From:** Kuehling, Monica, EMNRD <monica.kuehling@emnrd.nm.gov>  
**Sent:** Wednesday, October 11, 2023 3:02 PM  
**To:** Rennick, Kenneth G; Rustin Mikeska; geramiehavens@jicarillaoga.com  
**Cc:** Max Weaver; Lee Murphy; Michael Wissing; Mandi Walker; Cheryl Weston; Roy Kimbel - (C); Brice Clyde - (C); Kade, Matthew H  
**Subject:** RE: [EXTERNAL] Hilcorp P&A Pre-Job Review : Hoyt #2

**CAUTION:** External sender. DO NOT open links or attachments from UNKNOWN senders.

NMOCD approves for record

Thank you

Monica Kuehling  
Compliance Officer Supervisor  
Deputy Oil and Gas Inspector  
New Mexico Oil Conservation Division  
North District  
Office Phone: 505-334-6178 ext. 123  
Cell Phone: 505-320-0243  
Email - monica.kuehling@emnrd.nm.gov

---

**From:** Rennick, Kenneth G <krennick@blm.gov>  
**Sent:** Wednesday, October 11, 2023 2:56 PM  
**To:** Rustin Mikeska <rmikeska@hilcorp.com>; geramiehavens@jicarillaoga.com  
**Cc:** Kuehling, Monica, EMNRD <monica.kuehling@emnrd.nm.gov>; Max Weaver <mweaver@hilcorp.com>; Lee Murphy <lmurphy@hilcorp.com>; Michael Wissing <mwissing@hilcorp.com>; Mandi Walker <mwalker@hilcorp.com>; Cheryl Weston <cweston@hilcorp.com>; Roy Kimbel - (C) <Roy.Kimbel@hilcorp.com>; Brice Clyde - (C) <Brice.Clyde@hilcorp.com>; Kade, Matthew H <mkade@blm.gov>  
**Subject:** Re: [EXTERNAL] Hilcorp P&A Pre-Job Review : Hoyt #2

The BLM finds the proposal appropriate. Please include this email conversation with the subsequent report of work completed.

Kenny Rennick

Kenneth (Kenny) Rennick

Petroleum Engineer

Bureau of Land Management  
Farmington Field Office

6251 College Blvd  
Farmington, NM 87402

Email: [krennick@blm.gov](mailto:krennick@blm.gov)  
Mobile & Text: 505.497.0019

---

**From:** Rustin Mikeska <[rmikeska@hilcorp.com](mailto:rmikeska@hilcorp.com)>  
**Sent:** Wednesday, October 11, 2023 2:50 PM  
**To:** Rennick, Kenneth G <[krennick@blm.gov](mailto:krennick@blm.gov)>; [geramiehavens@jicarillaoga.com](mailto:geramiehavens@jicarillaoga.com) <[geramiehavens@jicarillaoga.com](mailto:geramiehavens@jicarillaoga.com)>  
**Cc:** Kuehling, Monica, EMNRD <[monica.kuehling@state.nm.us](mailto:monica.kuehling@state.nm.us)>; Max Weaver <[mweaver@hilcorp.com](mailto:mweaver@hilcorp.com)>; Lee Murphy <[lmurphy@hilcorp.com](mailto:lmurphy@hilcorp.com)>; Michael Wissing <[mwissing@hilcorp.com](mailto:mwissing@hilcorp.com)>; Mandi Walker <[mwalker@hilcorp.com](mailto:mwalker@hilcorp.com)>; Cheryl Weston <[cweston@hilcorp.com](mailto:cweston@hilcorp.com)>; Roy Kimbel - (C) <[Roy.Kimbel@hilcorp.com](mailto:Roy.Kimbel@hilcorp.com)>; Brice Clyde - (C) <[Brice.Clyde@hilcorp.com](mailto:Brice.Clyde@hilcorp.com)>  
**Subject:** [EXTERNAL] Hilcorp P&A Pre-Job Review : Hoyt #2

**This email has been received from outside of DOI - Use caution before clicking on links, opening attachments, or responding.**

Afternoon Kenny,

We would like to run our CBL in the 8-5/8" from 4,209' to surface based on the historical cementing reports and the following justification.

## Hoyt #2

3003906690  
Jicarilla Surface location

Cement history per state records:

- 465sx of Class G cmt was used to cement the 5-1/2" liner in an assumed 6-3/4" hole. TOC calculates to the liner top with a 55% hole efficiency.
- After a failed test on the liner top, 75sx of "normal" (B) cmt was used to sqz the liner top.
- We feel confident there is cmt behind the 5-1/2" liner based on this history and calculations.

**Proposal:** Run CBL in the 8-5/8" csg from the liner top to surface, 4,209' – surface.

\*We will keep the plug proposal the same as outlined in the NOI pending CBL results.

Thanks,

**Rustin Mikeska**  
P&A – Petroleum Engineer  
Cell: (254) 913-6777  
Office: (713) 289-2931  
[rmikeska@hilcorp.com](mailto:rmikeska@hilcorp.com)





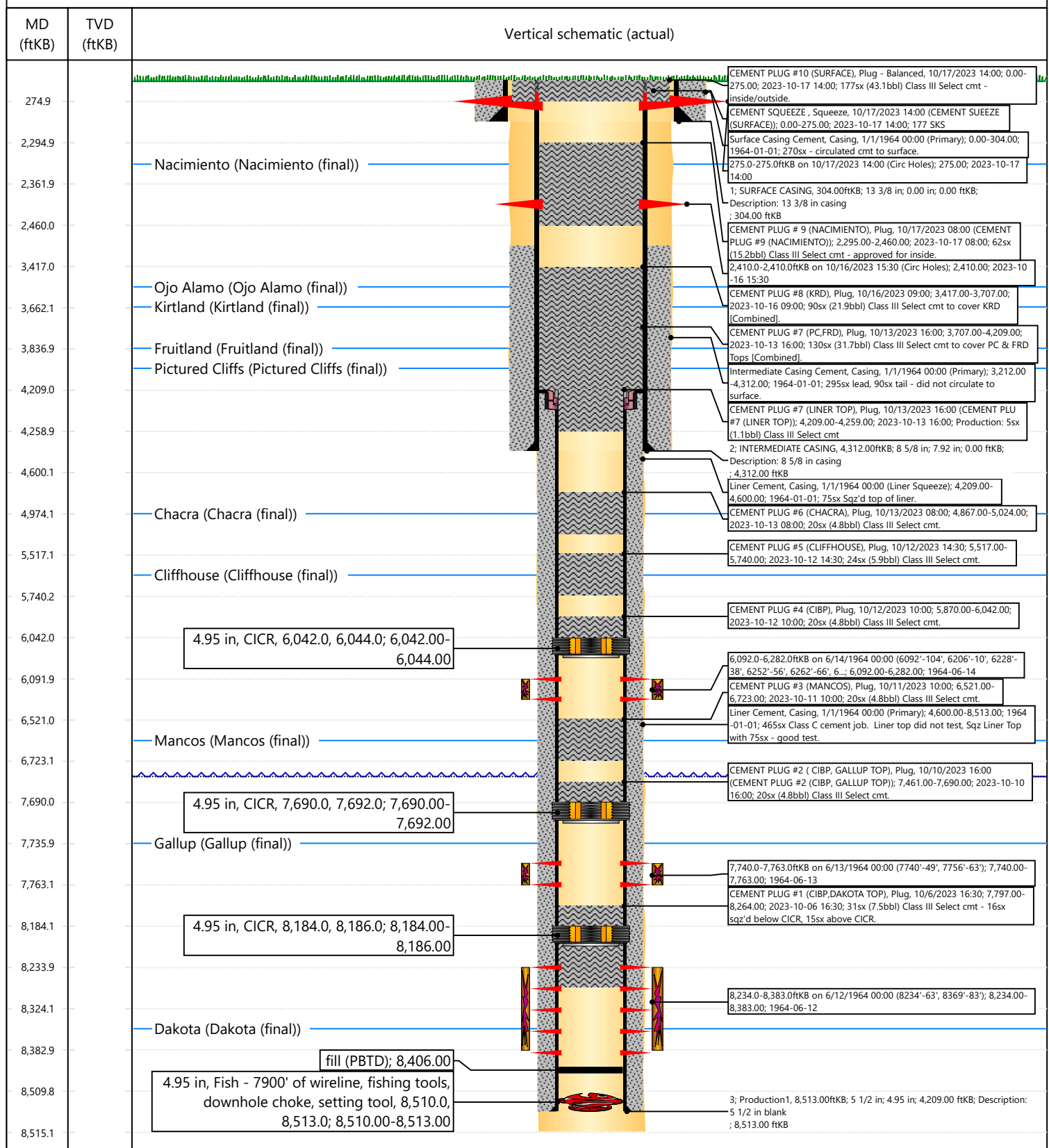


## Current Schematic - Version 3

Well Name: HOYT 02

API / UWI 3003906690	Surface Legal Location L-5-26N-4W	Field Name BASIN	Route 1407	State/Province NEW MEXICO	Well Configuration Type Vertical
Ground Elevation (ft) 7,284.00	Original KB/RT Elevation (ft) 7,295.00	RKB to GL (ft) 11.00	KB-Casing Flange Distance (ft)	KB-Tubing Hanger Distance (ft)	

## Original Hole [Vertical]





# United States Department of the Interior

BUREAU OF INDIAN AFFAIRS

Jicarilla Agency

P.O. Box 167

Dulce, New Mexico 87528

IN REPLY REFER TO:

Branch of Real Estate Services

November 15, 2019

## Memorandum

To: Robert Switzer, Environmental Protection Specialist  
Bureau of Land Management, Farmington Field Office

From: Kurt Sandoval, Realty Officer  
Bureau of Indian Affairs, Jicarilla Agency

Subject: BIA Concurrence concerning Well Pad Monument Makers

Let this serve as concurrence for the agreed upon preferred method to be used when constructing well pad monument markers on Jicarilla Apache Tribal Lands. We will eliminate the 6 ft. dry hole marker and use a permanent metal plate that will be installed at ground level, effective September 2019. The marker will contain the following information:

- Well Pad Lease Number
- Well Pad Location Name and Number
- Well Pad Legal Description, specifically Section, Township and Range
- Well Pad API Number
- Well Pad Plug Date
- Well Pad Operator Name

You may contact our office if you have any questions or concerns at (575) 759-3936. Thank you.

  
Realty Officer

cc: Jicarilla Oil and Gas Administration



HOYT 2

JIC119

30.039.06690

PLUG & ABANDON



**District I**  
1625 N. French Dr., Hobbs, NM 88240  
Phone:(575) 393-6161 Fax:(575) 393-0720  
**District II**  
811 S. First St., Artesia, NM 88210  
Phone:(575) 748-1283 Fax:(575) 748-9720  
**District III**  
1000 Rio Brazos Rd., Aztec, NM 87410  
Phone:(505) 334-6178 Fax:(505) 334-6170  
**District IV**  
1220 S. St Francis Dr., Santa Fe, NM 87505  
Phone:(505) 476-3470 Fax:(505) 476-3462

State of New Mexico  
Energy, Minerals and Natural Resources  
Oil Conservation Division  
1220 S. St Francis Dr.  
Santa Fe, NM 87505

CONDITIONS  
  
Action 282192

CONDITIONS

Operator: HILCORP ENERGY COMPANY 1111 Travis Street Houston, TX 77002	OGRID: 372171
	Action Number: 282192
	Action Type: [C-103] Sub. Plugging (C-103P)

CONDITIONS

Created By	Condition	Condition Date
mkuehling	well plugged 10/17/2023	11/14/2023