

State of New Mexico  
Energy, Minerals and Natural Resources

Office  
District I – (575) 393-6161  
1625 N. French Dr., Hobbs, NM 88240  
District II – (575) 748-1283  
811 S. First St., Artesia, NM 88210  
District III – (505) 334-6178  
1000 Rio Brazos Rd., Aztec, NM 87410  
District IV – (505) 476-3460  
1220 S. St. Francis Dr., Santa Fe, NM  
87505

OIL CONSERVATION DIVISION  
1220 South St. Francis Dr.  
Santa Fe, NM 87505

WELL API NO.  
**30-025-05629**

5. Indicate Type of Lease  
STATE ☐ FEE ☒

6. State Oil & Gas Lease No.

7. Lease Name or Unit Agreement Name  
**NMGSAU**

8. Well Number 3

9. OGRID Number 873

10. Pool name or Wildcat  
**EUNICE-MONUMENT G/SA**

SUNDRY NOTICES AND REPORTS ON WELLS  
(DO NOT USE THIS FORM FOR PROPOSALS TO DRILL OR TO DEEPEN OR PLUG BACK TO A DIFFERENT RESERVOIR. USE "APPLICATION FOR PERMIT" (FORM C-101) FOR SUCH PROPOSALS.)

1. Type of Well: Oil Well ☐ ☒ Gas Well ☐ Other

2. Name of Operator  
**APACHE CORPORATION**

3. Address of Operator  
**303 VETERANS AIRPARK LANE, STE. 3000, MIDLAND TX 79705**

4. Well Location  
Unit Letter C : 660 feet from the N line and 1980 feet from the W line  
Section 18 Township 19S Range 37E NMPM County LEA

11. Elevation (Show whether DR, RKB, RT, GR, etc.)  
3705' GR

12. Check Appropriate Box to Indicate Nature of Notice, Report or Other Data

NOTICE OF INTENTION TO:

PERFORM REMEDIAL WORK ☐ **PLUG AND ABANDON** ☐  
TEMPORARILY ABANDON ☐ CHANGE PLANS ☐  
PULL OR ALTER CASING ☐ MULTIPLE COMPL ☐  
DOWNHOLE COMMINGLE ☐  
CLOSED-LOOP SYSTEM ☐  
OTHER: ☐

SUBSEQUENT REPORT OF:

REMEDIAL WORK ☐ ALTERING CASING ☐  
COMMENCE DRILLING OPNS. ☐ P AND A ☒  
CASING/CEMENT JOB ☐  
OTHER: ☐

13. Describe proposed or completed operations. (Clearly state all pertinent details, and give pertinent dates, including estimated date of starting any proposed work). SEE RULE 19.15.7.14 NMAC. For Multiple Completions: Attach wellbore diagram of proposed completion or recompletion.

10/19/23 - NOTIFIED NMOC. MIRU.

10/23/23 - CIRCULATE MLF. SPOTTED 40 SX CLASS "C" CEMENT FROM 3779' - 3537'.

10/24/23 - TAGGED @ 3523'. SPOTTED 40 SX CLASS "C" CEMENT FROM 2640' - 2402'. TAGGED @ 2395'. PERF'D @ 1437'. SQUEEZED 70 SX OF CLASS "C" CEMENT FROM 1437' - 1200'. OCD KERRY FORTNER APPROVED.

10/25/23 - TAGGED @ 1155'. PERF'D @ 600'.

10/26/23 - PERF'D @ 1105'. SQUEEZED 65 SX OF CLASS "C" CEMENT FROM 1105' - 950'.

10/27/23 - TAGGED @ 928'. SQUEEZED 60 SX OF CLASS "C" CEMENT FROM 600' - 400'. APPROVED BY OCD KERRY FORTNER. TAGGED @ 401'. PERF'D @ 300'. CIRCULATED 165 SX OF CLASS "C" CEMENT FROM 300' - SURFACE. VERIFIED CEMENT AT SURFACE.

Approved for plugging of well bore only. Liability under bond is retained pending Location cleanup & receipt of C-103Q (Subsequent Report of Well Plugging) which may be found at OCD Web Page, OCD Permitting @ [www.emnrd.state.nm.us](http://www.emnrd.state.nm.us)

Spud Date:

Rig Release Date:

I hereby certify that the information above is true and complete to the best of my knowledge and belief.

SIGNATURE Kelton Woodard TITLE P&A ENGINEER DATE 11/2/2023

Type or print name KELTON WOODARD E-mail address: lee@jmrsservices.com PHONE: (432)618-1050

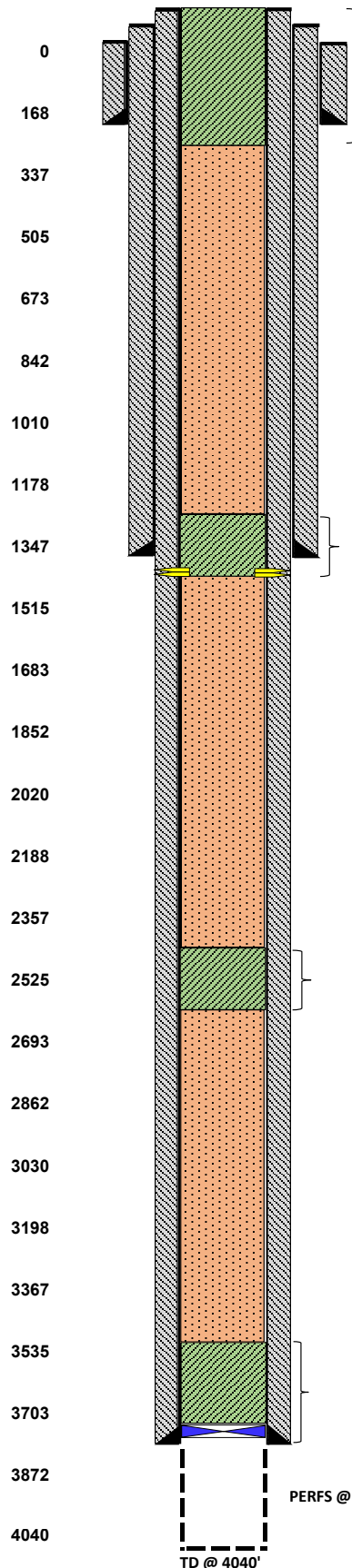
For State Use Only

APPROVED BY: [Signature] TITLE Staff Manager DATE 11/22/23  
Conditions of Approval (if any):



LEASE NAME	NORTH MONUMENT G/SA UT.
WELL #	#003
API #	30-025-05629
COUNTY	LEA, NM

## FINAL P&amp;A WB DIAGRAM



## PLUG #4

10-24-23 PUH, PERF'D @ 600', CIRC 7" X 9 5/8" W/ 40 BBLS, CANOT EPIR W/ 7" X 9 5/8" CLOSED FOR SQZ.  
 10-25-23 RU RENEGADE WL, RAN CBL FROM 1155' TO SURF. GOT W/ KERRY FORTNER, PERF'D @ 1105' & SQZD 65 SX, DISPLACED TO 950'. WOC.  
 10-26-23 TAGGED TOC @ 928', BUBBLE TEST LOOKED GOOD, SQZ 60 SX @ 600' TO 400', WOC/TAGGED TOC @ 401'. PERF'D @ 300', SQZD/CIRC 110 SX FROM 300'- SURF. IN 7" & OUT 9 5/8", SQZD 55 SX DOWN 13 3/8". ALL STRINGS FULL INSIDE AND OUT FROM 300' TO SURF. RDMO, CUT OFF WH, ANCHORS, INSTALL DRY HOLE MARKER, P&A COMPLETE.

## PLUG #3

10-24-23 PUH & PERF'D @ 1437', EPIR & SQZD 70 SX CLASS "C" CMT FROM 1437'-1200', WOC/TAG (PER KERRY FORTNER # OCD)  
 10-25-23 TAGGED TOC @ 1155'

## PLUG #2

10-24-23 PUH & SPOTTED 40 SX CLASS "C" CMT FROM 2640'-2402", WOC/TAGGED TOC @ 2395'.

## PLUG #1

8-4-23 MIRU PREP RIG, POOH, TESTED , & LD PROD TBG.  
 8-7-23 RIH & SET CIBP @ 3775' W/ NO CMT, RDMO.  
 10-19-23 MIRU P&A RIG. DUG OUT CELLAR, PREPPED WH FOR PLUGGING.  
 10-23-23 RIH & VERIFIED CIBP @ 3775', CIRC W/ MLF & SPOTTED 40 SX CLASS "C" CMT ON CIBP.  
 10-24-23 RIH & TAGGED TOC @ 3523'.

16" HOLE  
 13 3/8" 40# @ 170'  
 W/ 125 SX CIRC TO SURF

12 1/4" HOLE  
 9 5/8" 40# @ 1350'  
 W/ 600 SX CIRC TO SURF

8 5/8" HOLE  
 7" 24# @ 3825'  
 W/ 300 SX TO SURF

OPEN HOLE FROM 3825'-4040'

**District I**  
1625 N. French Dr., Hobbs, NM 88240  
Phone:(575) 393-6161 Fax:(575) 393-0720  
**District II**  
811 S. First St., Artesia, NM 88210  
Phone:(575) 748-1283 Fax:(575) 748-9720  
**District III**  
1000 Rio Brazos Rd., Aztec, NM 87410  
Phone:(505) 334-6178 Fax:(505) 334-6170  
**District IV**  
1220 S. St Francis Dr., Santa Fe, NM 87505  
Phone:(505) 476-3470 Fax:(505) 476-3462

State of New Mexico  
Energy, Minerals and Natural Resources  
Oil Conservation Division  
1220 S. St Francis Dr.  
Santa Fe, NM 87505

COMMENTS  
  
Action 286440

COMMENTS

Operator: APACHE CORPORATION 303 Veterans Airpark Ln Midland, TX 79705	OGRID: 873
	Action Number: 286440
	Action Type: [C-103] Sub. Plugging (C-103P)

COMMENTS

Created By	Comment	Comment Date
plmartinez	DATA ENTRY PM.	11/28/2023

**District I**  
1625 N. French Dr., Hobbs, NM 88240  
Phone:(575) 393-6161 Fax:(575) 393-0720  
**District II**  
811 S. First St., Artesia, NM 88210  
Phone:(575) 748-1283 Fax:(575) 748-9720  
**District III**  
1000 Rio Brazos Rd., Aztec, NM 87410  
Phone:(505) 334-6178 Fax:(505) 334-6170  
**District IV**  
1220 S. St Francis Dr., Santa Fe, NM 87505  
Phone:(505) 476-3470 Fax:(505) 476-3462

**State of New Mexico**  
**Energy, Minerals and Natural Resources**  
**Oil Conservation Division**  
**1220 S. St Francis Dr.**  
**Santa Fe, NM 87505**

CONDITIONS

Action 286440

CONDITIONS

Operator: APACHE CORPORATION 303 Veterans Airpark Ln Midland, TX 79705	OGRID: 873
	Action Number: 286440
	Action Type: [C-103] Sub. Plugging (C-103P)

CONDITIONS

Created By	Condition	Condition Date
gcordero	None	11/22/2023