



333 Main Street Shelby, Montana 59474 / P.O. Box 10640 Bozeman, MT 59179

(406) 460-0903

TO: Jim Griswold, OCD

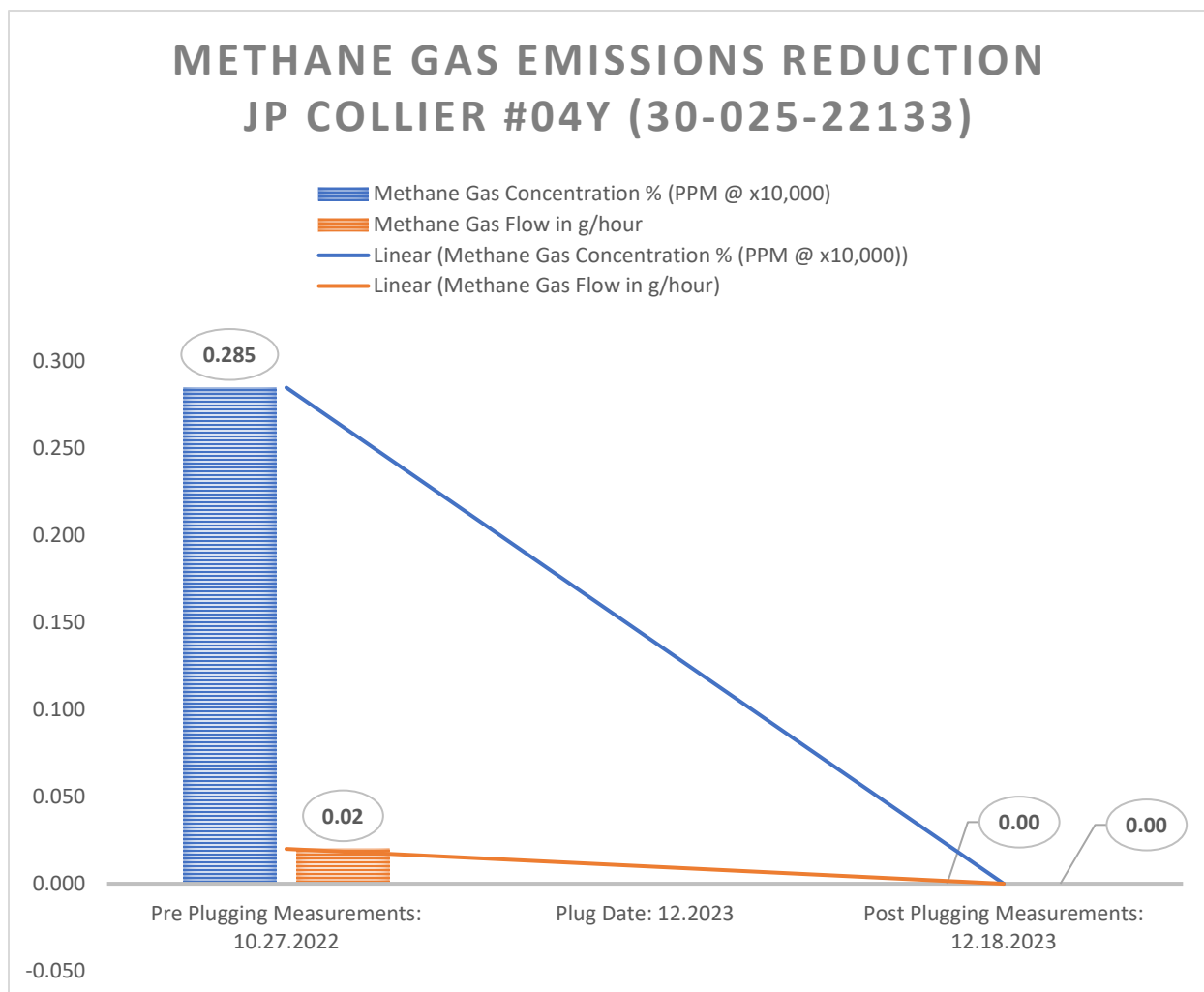
FROM: Curtis Shuck, WDNM

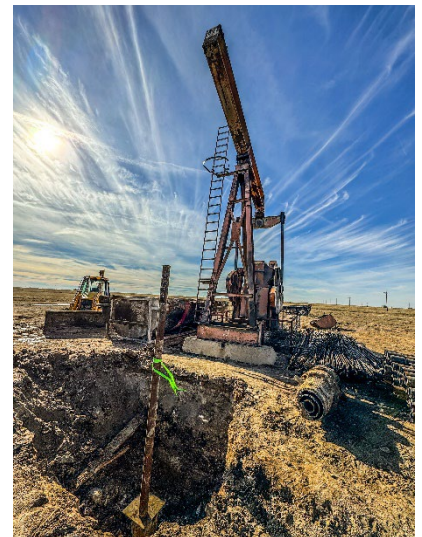
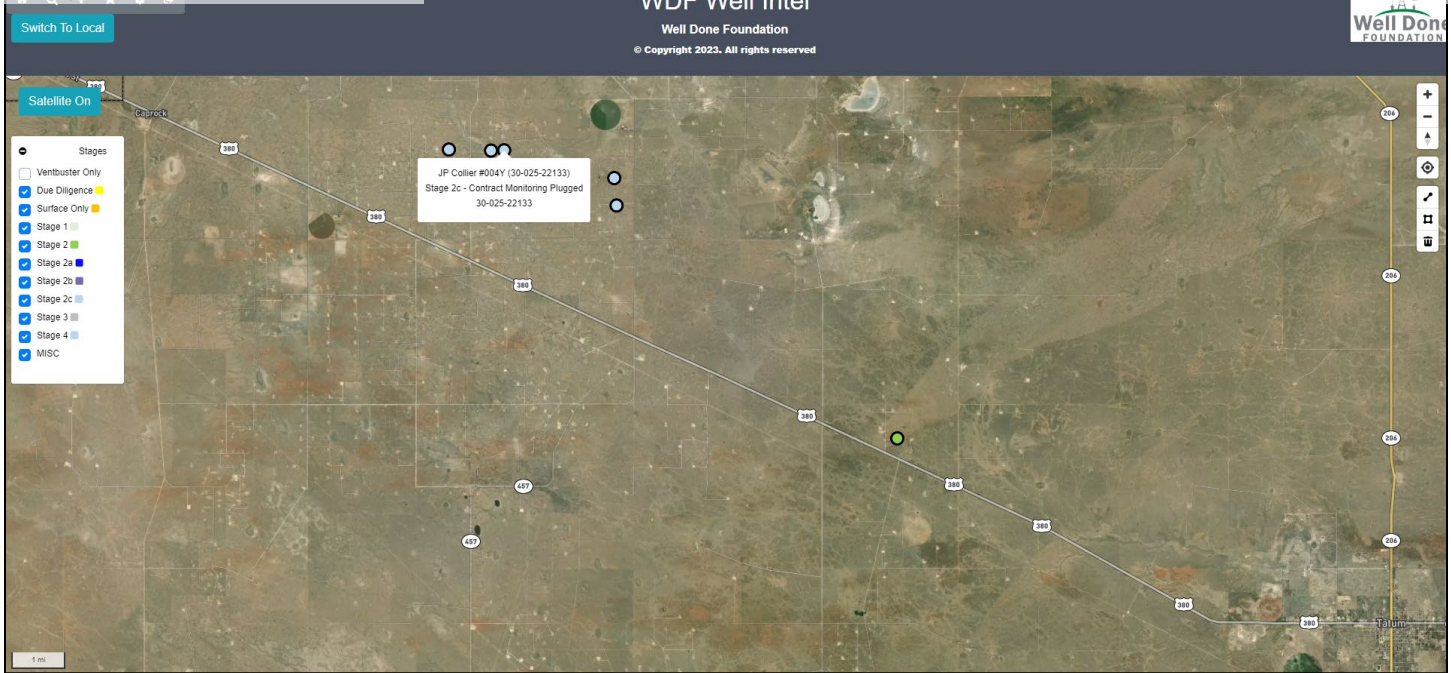
DATE: December 31, 2023

RE: JP Collier #04Y (30-025-22133) Post Plugging Methane Emission Reduction Report

MEMORANDUM

Well Done New Mexico LLC performed Post Plugging Orphan Well Methane Emission Testing, Gas Sampling & Analysis on the JP Collier #04Y (30-025-22133) on December 18, 2023. The following are the conclusions:





LABORATORY SERVICES www.perrinenergy.com 575.507.3713 2023 W/ Modified - Hudson N/A 03/24

19615G **J.P. COLLIER 004Y POST PLUG** **J.P. COLLIER 004Y POST PLUG**

Sample Point Code Sample Point Name Sample Point Location

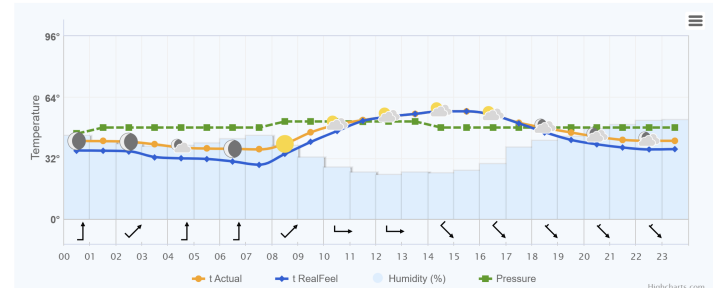
Laboratory Services	2023081624	BAG	CES - Spot
Source Laboratory	Lab File No	Container Identity	Sampler
USA	USA	USA	New Mexico
District	Area Name	Field Name	Facility Name
Dec 18, 2023 13:20	Dec 1, 2023	Dec 20, 2023 09:24	Dec 20, 2023
Date Sampled	Date Effective	Date Received	Date Reported
Ambient Temp (°F)	Flow Rate (Mcf)	Analyst	Press PSI @ Temp °F
			Source Conditions
Well Done Foundation			NG
Operator			Lab Source Description
Component	Normalized Mol %	Un-Normalized Mol %	GPM
H2S (H2S)	0.0000	0	
Nitrogen (N2)	99.5850	99.58492	
CO2 (CO2)	0.0000	0	
Methane (C1)	0.0000	0	
Ethane (C2)	0.0000	0	0.0000
Propane (C3)	0.0000	0	0.0000
i-Butane (iC4)	0.0000	0	0.0000
n-Butane (nC4)	0.0000	0	0.0000
i-Pentane (iC5)	0.0000	0	0.0000
n-Pentane (nC5)	0.0000	0	0.0000
Hexanes Plus (C6+)	0.4150	0.41508	0.1800
TOTAL	100.0000	100.0000	0.1800
Analyzer Information			
Device Type: Gas Chromatograph	Device Make: Shimadzu		
Device Model: GC-2014	Last Cal Date: Dec 16, 2023		
Source	Date	Notes	
Dustin Armstrong	Dec 20, 2023 4:37 pm	Methane = 0 ppm	

C6+ Gas Analysis Report

December 18, 2023

	Atmospheric conditions and temperature °F	RealFeel °F	Atmospheric pressure inHg	Wind speed mph	Humidity
Night	+41°	+36°	26.5	▼ N 9.6	64%
Morning	+36°	+28°	26.5	▼ N 8.7	69%
Day	+55°	+55°	26.6	► SE 8.9	39%
Evening	+45°	+41°	26.5	► SE 7.2	68%

Hourly forecast for 18.12.2023





19615G	J.P. COLLIER 004Y POST PLUG	J.P. COLLIER 004Y POST PLUG	
Sample Point Code	Sample Point Name	Sample Point Location	
Laboratory Services	2023081624	BAG	CES - Spot
Source Laboratory	Lab File No	Container Identity	Sampler
USA	USA	USA	New Mexico
District	Area Name	Field Name	Facility Name
Dec 18, 2023 13:20	Dec 1, 2023	Dec 20, 2023 09:24	Dec 20, 2023
Date Sampled	Date Effective	Date Received	Date Reported
Admin			
Ambient Temp (°F)	Flow Rate (Mcf)	Analyst	Press PSI @ Temp °F Source Conditions
Well Done Foundation		NG	
Operator		Lab Source Description	

Component	Normalized Mol %	Un-Normalized Mol %	GPM
H2S (H2S)	0.0000	0	
Nitrogen (N2)	99.5850	99.58492	
CO2 (CO2)	0.0000	0	
Methane (C1)	0.0000	0	
Ethane (C2)	0.0000	0	0.0000
Propane (C3)	0.0000	0	0.0000
I-Butane (IC4)	0.0000	0	0.0000
N-Butane (NC4)	0.0000	0	0.0000
I-Pentane (IC5)	0.0000	0	0.0000
N-Pentane (NC5)	0.0000	0	0.0000
Hexanes Plus (C6+)	0.4150	0.41508	0.1800
TOTAL	100.0000	100.0000	0.1800

Method(s): Gas C6+ - GPA 2261, Extended Gas - GPA 2286, Calculations - GPA 2172

Analyzer Information			
Device Type:	Gas Chromatograph	Device Make:	Shimadzu
Device Model:	GC-2014	Last Cal Date:	Dec 18, 2023

Gross Heating Values (Real, BTU/ft³)			
14.696 PSI @ 60.00 Å°F	14.73 PSI @ 60.00 Å°F		
Dry	Saturated	Dry	Saturated
21.4	21.9	21.4	22.00
Calculated Total Sample Properties			
GPA2145-16 *Calculated at Contract Conditions			
Relative Density Real	Relative Density Ideal		
0.9765	0.9766		
Molecular Weight			
28.2839			
C6+ Group Properties			
Assumed Composition			
C6 - 60.000%	C7 - 30.000%	C8 - 10.000%	
Field H2S			
0 PPM			

PROTREND STATUS:

Passed By Validator on Dec 20, 2023

DATA SOURCE:

Imported

PASSED BY VALIDATOR REASON:

First sample taken @ this point, composition looks reasonable

VALIDATOR:

Dustin Armstrong

VALIDATOR COMMENTS:

OK

Source	Date	Notes
Dustin Armstrong	Dec 20, 2023 4:37 pm	Methane = 0 ppm

District I
1625 N. French Dr., Hobbs, NM 88240
Phone:(575) 393-6161 Fax:(575) 393-0720
District II
811 S. First St., Artesia, NM 88210
Phone:(575) 748-1283 Fax:(575) 748-9720
District III
1000 Rio Brazos Rd., Aztec, NM 87410
Phone:(505) 334-6178 Fax:(505) 334-6170
District IV
1220 S. St Francis Dr., Santa Fe, NM 87505
Phone:(505) 476-3470 Fax:(505) 476-3462

State of New Mexico
Energy, Minerals and Natural Resources
Oil Conservation Division
1220 S. St Francis Dr.
Santa Fe, NM 87505

DEFINITIONS

Action 300593

DEFINITIONS

Operator: LEASE HOLDERS ACQUISITIONS, INCORPORATED 705 S Mustang Rd #127 Yukon, OK 73099	OGRID: 372878
	Action Number: 300593
	Action Type: [UF-OMA] Pre-Plug Methane Monitoring (UF-OMA-MMA)

DEFINITIONS

The Orphan Well Mitigation Activity (OMA) forms are a subset of the OCD's forms exclusively designed for activities related to State of New Mexico's contracted plugging and reclamation activities. Specifically, these forms are used for orphan wells or associated facilities which are in a "Reclamation Fund Approved" status. This status represents wells or facilities where the OCD has acquired a hearing order allowing the OCD to perform plugging or reclamation on wells and associated facilities that no longer have a viable operator to perform the necessary work. These forms are not to be utilized for any other purpose.

District I

1625 N. French Dr., Hobbs, NM 88240
Phone:(575) 393-6161 Fax:(575) 393-0720

District II

811 S. First St., Artesia, NM 88210
Phone:(575) 748-1283 Fax:(575) 748-9720

District III

1000 Rio Brazos Rd., Aztec, NM 87410
Phone:(505) 334-6178 Fax:(505) 334-6170

District IV

1220 S. St Francis Dr., Santa Fe, NM 87505
Phone:(505) 476-3470 Fax:(505) 476-3462

State of New Mexico
Energy, Minerals and Natural Resources
Oil Conservation Division
1220 S. St Francis Dr.
Santa Fe, NM 87505

QUESTIONS

Action 300593

QUESTIONS

Operator: LEASE HOLDERS ACQUISITIONS, INCORPORATED 705 S Mustang Rd #127 Yukon, OK 73099	OGRID: 372878
	Action Number: 300593
	Action Type: [UF-OMA] Pre-Plug Methane Monitoring (UF-OMA-MMA)

QUESTIONS

Prerequisites	
[OGRID] Well Operator	[372878] LEASE HOLDERS ACQUISITIONS, INCORPORATED
[API] Well Name and Number	[30-025-22133] J P COLLIER #004Y
Well Status	Reclamation Fund Approved

Monitoring Event Information*Please answer all the questions in this group.*

Reason For Filing	Pre-Plug Methane Monitoring
Date of monitoring	12/18/2023
Latitude	33.38211
Longitude	-103.60000

Monitoring Event Details*Please answer all the questions in this group.*

Flow rate in cubic meters per day (m³/day)	0.00
Test duration in hours (hr)	1.0
Average flow temperature in degrees Celsius (°C)	11.7
Average gauge flow pressure in kilopascals (kPag)	0.0
Methane concentration in part per million (ppm)	0
Methane emission rate in grams per hour (g/hr)	0.00
Testing Method	Steady State

Monitoring Contractor*Please answer all the questions in this group.*

Name of monitoring contractor	Well Done New Mexico LLC
-------------------------------	--------------------------