

Office
 District I – (575) 393-6161
 1625 N. French Dr., Hobbs, NM 88240
 District II – (575) 748-1283
 811 S. First St., Artesia, NM 88210
 District III – (505) 334-6178
 1000 Rio Brazos Rd., Aztec, NM 87410
 District IV – (505) 476-3460
 1220 S. St. Francis Dr., Santa Fe, NM
 87505

State of New Mexico
 Energy, Minerals and Natural Resources

Form C-103
 Revised July 18, 2013

OIL CONSERVATION DIVISION
 1220 South St. Francis Dr.
 Santa Fe, NM 87505

SUNDRY NOTICES AND REPORTS ON WELLS (DO NOT USE THIS FORM FOR PROPOSALS TO DRILL OR TO DEEPEN OR PLUG BACK TO A DIFFERENT RESERVOIR. USE "APPLICATION FOR PERMIT" (FORM C-101) FOR SUCH PROPOSALS.)		WELL API NO. 30-015-54322
1. Type of Well: Oil Well <input checked="" type="checkbox"/> Gas Well <input type="checkbox"/> Other <input type="checkbox"/>		5. Indicate Type of Lease STATE <input checked="" type="checkbox"/> FEE <input type="checkbox"/>
2. Name of Operator PERMIAN RESOURCES OPERATING, LLC		6. State Oil & Gas Lease No.
3. Address of Operator 300 N MARIENFELD STREET, SUITE 1000 MIDLAND, TX 79701		7. Lease Name or Unit Agreement Name MADERA 9 STATE COM
4. Well Location Unit Letter <u>H</u> : 1440 feet from the <u>N</u> line and <u>363</u> feet from the <u>E</u> line Section <u>9</u> Township <u>19S</u> Range <u>28E</u> NMPM County <u>EDDY</u>		8. Well Number <u>131H</u>
11. Elevation (Show whether DR, RKB, RT, GR, etc.) 3532.8' GL		9. OGRID Number 372165
		10. Pool name or Wildcat [97569] WINCHESTER; BONE SPRING, WEST

12. Check Appropriate Box to Indicate Nature of Notice, Report or Other Data

NOTICE OF INTENTION TO:		SUBSEQUENT REPORT OF:	
PERFORM REMEDIAL WORK <input type="checkbox"/>	PLUG AND ABANDON <input type="checkbox"/>	REMEDIAL WORK <input type="checkbox"/>	ALTERING CASING <input type="checkbox"/>
TEMPORARILY ABANDON <input type="checkbox"/>	CHANGE PLANS <input checked="" type="checkbox"/>	COMMENCE DRILLING OPNS. <input type="checkbox"/>	P AND A <input type="checkbox"/>
PULL OR ALTER CASING <input type="checkbox"/>	MULTIPLE COMPL <input type="checkbox"/>	CASING/CEMENT JOB <input type="checkbox"/>	
DOWNHOLE COMMINGLE <input type="checkbox"/>			
CLOSED-LOOP SYSTEM <input type="checkbox"/>			
OTHER: <input type="checkbox"/>		OTHER: <input type="checkbox"/>	

13. Describe proposed or completed operations. (Clearly state all pertinent details, and give pertinent dates, including estimated date of starting any proposed work). SEE RULE 19.15.7.14 NMAC. For Multiple Completions: Attach wellbore diagram of proposed completion or recompletion.

PERMIAN RESOURCES OPERATING, LLC WOULD LIKE TO REQUEST THE FOLLOWING CHANGES TO THIS APD:
 PROPOSED SHL FROM 1468' FNL & 380' FEL TO 1440' FNL & 363' FEL.

SWITCHING THE 131H SHL TO THE 121H SHL WILL AVOID DRILLING RIG SPACING ISSUES AND CUT DOWN ON WALKING TIME.

PLEASE FIND ATTACHED THE REVISED C-102 WELL PLAT REFLECTING THESE CHANGES.

Spud Date:

2/6/2024

Rig Release Date:

2/23/2024

I hereby certify that the information above is true and complete to the best of my knowledge and belief.

SIGNATURE Ashley Brown TITLE Senior Regulatory Analyst DATE 2/5/2024

Type or print name Ashley Brown E-mail address: ashley.brown@permianres.com PHONE: (432) 400-2972

For State Use Only

APPROVED BY: _____ TITLE _____ DATE _____

Conditions of Approval (if any):

District I
1625 N. French Dr., Hobbs, NM 88240
Phone: (575) 393-6161 Fax: (575) 393-0720
District II
811 S. First St., Artesia, NM 88210
Phone: (575) 748-1283 Fax: (575) 748-9720
District III
1000 Rio Brazos Road, Aztec, NM 87410
Phone: (505) 334-6178 Fax: (505) 334-6170
District IV
1220 S. St. Francis Dr., Santa Fe, NM 87505
Phone: (505) 476-3460 Fax: (505) 476-3462

State of New Mexico

Energy, Minerals & Natural Resources Department

OIL CONSERVATION DIVISION

1220 South St. Francis Dr.

Santa Fe, NM 87505

Form C-102

Revised August 1, 2011

Submit one copy to appropriate District Office

☐ AMENDED REPORT

WELL LOCATION AND ACREAGE DEDICATION PLAT

¹ API Number 30-015-54322		² Pool Code [97569]		³ Pool Name WINCHESTER; BONE SPRING, WEST					
⁴ Property Code 334791		⁵ Property Name MADERA 9 STATE COM						⁶ Well Number 131H	
⁷ OGRID No. 372165		⁸ Operator Name PERMIAN RESOURCES OPERATING, LLC						⁹ Elevation 3532.8'	

¹⁰ Surface Location

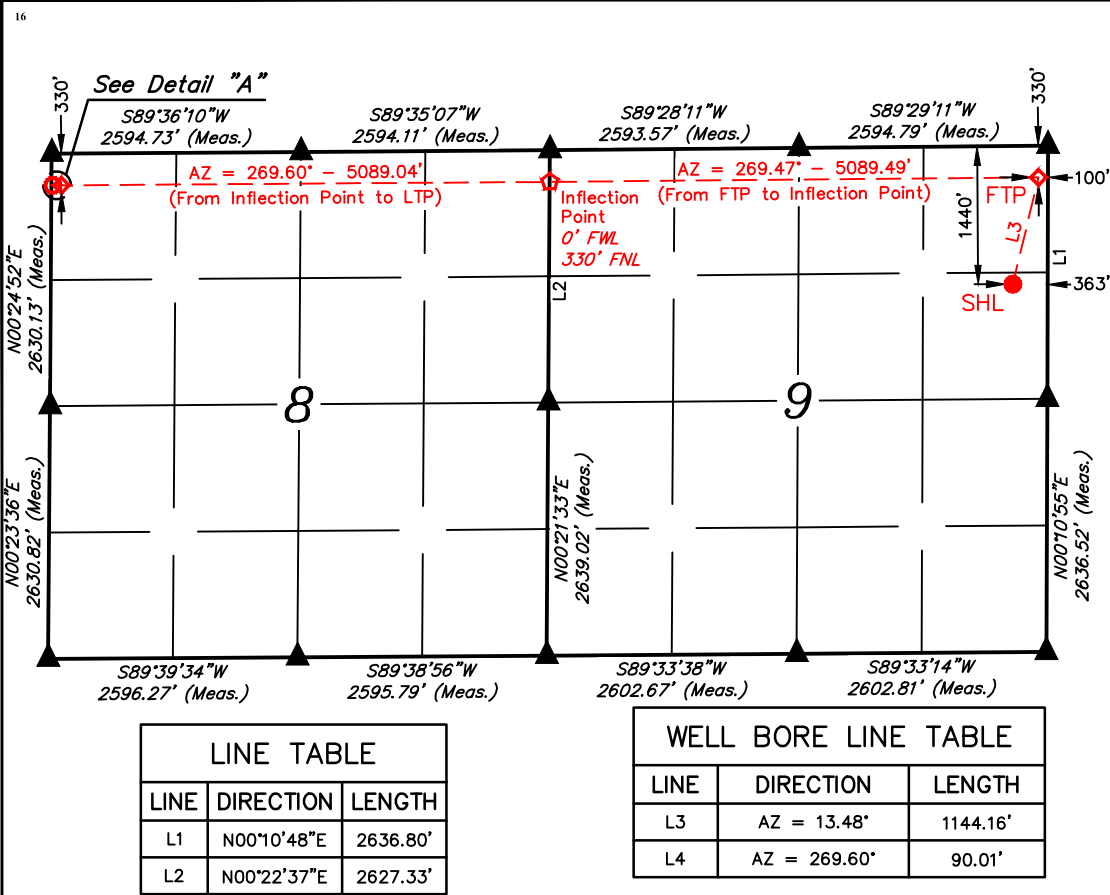
UL or lot no.	Section	Township	Range	Lot Idn	Feet from the	North/South line	Feet from the	East/West line	County
H	9	19S	28E		1440	NORTH	363	EAST	EDDY

¹¹ Bottom Hole Location If Different From Surface

UL or lot no.	Section	Township	Range	Lot Idn	Feet from the	North/South line	Feet from the	East/West line	County
D	8	19S	28E		330	NORTH	10	WEST	EDDY

¹² Dedicated Acres 320.00		¹³ Joint or Infill		¹⁴ Consolidation Code		¹⁵ Order No.			
---	--	-------------------------------	--	----------------------------------	--	-------------------------	--	--	--

No allowable will be assigned to this completion until all interests have been consolidated or a non-standard unit has been approved by the division.



LINE TABLE		
LINE	DIRECTION	LENGTH
L1	N00°10'48"E	2636.80'
L2	N00°22'37"E	2627.33'

WELL BORE LINE TABLE		
LINE	DIRECTION	LENGTH
L3	AZ = 13.48°	1144.16'
L4	AZ = 269.60°	90.01'

- NOTE:
- Distances referenced on plat to section lines are perpendicular.
 - Basis of Bearings is a Transverse Mercator Projection with a Central Meridian of W103°53'00" (NAD 83)

NAD 83 (SURFACE HOLE LOCATION)	
LATITUDE = 32°40'42.38" (32.678440°)	
LONGITUDE = -104°10'25.49" (-104.173748°)	
NAD 27 (SURFACE HOLE LOCATION)	
LATITUDE = 32°40'41.96" (32.678324°)	
LONGITUDE = -104°10'23.66" (-104.173239°)	
STATE PLANE NAD 83 (N.M. EAST)	
N: 610584.59' E: 590439.35'	
STATE PLANE NAD 27 (N.M. EAST)	
N: 610522.36' E: 549259.72'	

NAD 83 (FIRST TAKE POINT)	
LATITUDE = 32°40'53.40" (32.681500°)	
LONGITUDE = -104°10'22.41" (-104.172891°)	
NAD 27 (FIRST TAKE POINT)	
LATITUDE = 32°40'52.98" (32.681383°)	
LONGITUDE = -104°10'20.58" (-104.172382°)	
STATE PLANE NAD 83 (N.M. EAST)	
N: 611698.11' E: 590701.21'	
STATE PLANE NAD 27 (N.M. EAST)	
N: 611635.86' E: 549521.60'	

NAD 83 (INFLECTION POINT)	
LATITUDE = 32°40'52.80" (32.681332°)	
LONGITUDE = -104°11'21.94" (-104.189428°)	
NAD 27 (INFLECTION POINT)	
LATITUDE = 32°40'52.38" (32.681216°)	
LONGITUDE = -104°11'20.11" (-104.188918°)	
STATE PLANE NAD 83 (N.M. EAST)	
N: 611629.80' E: 585613.35'	
STATE PLANE NAD 27 (N.M. EAST)	
N: 611567.58' E: 544433.73'	

NAD 83 (LAST TAKE POINT)	
LATITUDE = 32°40'52.29" (32.681193°)	
LONGITUDE = -104°12'21.47" (-104.205964°)	
NAD 27 (LAST TAKE POINT)	
LATITUDE = 32°40'51.87" (32.681076°)	
LONGITUDE = -104°12'19.63" (-104.205454°)	
STATE PLANE NAD 83 (N.M. EAST)	
N: 611572.53' E: 580525.81'	
STATE PLANE NAD 27 (N.M. EAST)	
N: 611510.36' E: 539346.18'	

NAD 83 (BOTTOM HOLE LOCATION)	
LATITUDE = 32°40'52.28" (32.681190°)	
LONGITUDE = -104°12'22.52" (-104.206256°)	
NAD 27 (BOTTOM HOLE LOCATION)	
LATITUDE = 32°40'51.87" (32.681074°)	
LONGITUDE = -104°12'20.69" (-104.205746°)	
STATE PLANE NAD 83 (N.M. EAST)	
N: 611571.53' E: 580435.82'	
STATE PLANE NAD 27 (N.M. EAST)	
N: 611509.35' E: 539256.20'	

¹⁷ OPERATOR CERTIFICATION

I hereby certify that the information contained herein is true and complete to the best of my knowledge and belief, and that this organization either owns a working interest or unleased mineral interest in the land including the proposed bottom hole location or has a right to drill this well at this location pursuant to a contract with an owner of such a mineral or working interest, or to a voluntary pooling agreement or a compulsory pooling order heretofore entered by the division.

Ashley Brown 2/5/2024
Signature Date

Ashley Brown
Printed Name

ashley.brown@permianres.com
E-mail Address

¹⁸ SURVEYOR CERTIFICATION

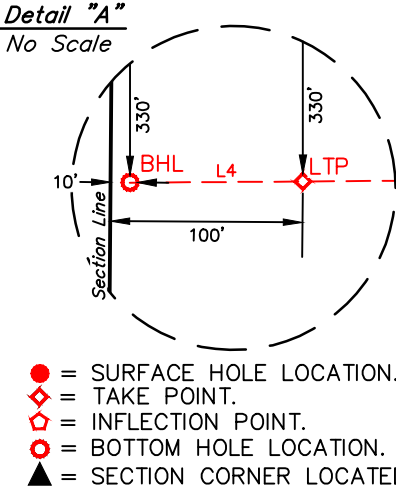
I hereby certify that the well location shown on this plat was plotted from field notes of actual surveys made by me or under my supervision, and that the same is true and correct to the best of my belief.

July 10, 2023
Date of Survey

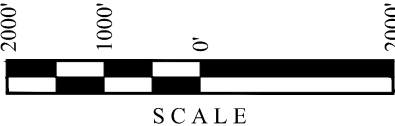
Signature and Seal of Professional Surveyor:



Certificate Number:



- = SURFACE HOLE LOCATION.
- ◆ = TAKE POINT.
- ◇ = INFLECTION POINT.
- = BOTTOM HOLE LOCATION.
- ▲ = SECTION CORNER LOCATED.



DRAWN BY: N.D.T. 07-20-23
REV: 5 01-31-24 L.T.T.
(SHL CHANGE)

District I
1625 N. French Dr., Hobbs, NM 88240
Phone:(575) 393-6161 Fax:(575) 393-0720

District II
811 S. First St., Artesia, NM 88210
Phone:(575) 748-1283 Fax:(575) 748-9720

District III
1000 Rio Brazos Rd., Aztec, NM 87410
Phone:(505) 334-6178 Fax:(505) 334-6170

District IV
1220 S. St Francis Dr., Santa Fe, NM 87505
Phone:(505) 476-3470 Fax:(505) 476-3462

State of New Mexico
Energy, Minerals and Natural Resources
Oil Conservation Division
1220 S. St Francis Dr.
Santa Fe, NM 87505

CONDITIONS

Action 307292

CONDITIONS

Operator: Permian Resources Operating, LLC 1001 17th Street, Suite 1800 Denver, CO 80202	OGRID: 372165
	Action Number: 307292
	Action Type: [C-103] NOI Change of Plans (C-103A)

CONDITIONS

Created By	Condition	Condition Date
ward.rikala	All original COA's still apply. Additionally, if cement is not circulated to surface during any cementing operation, then a CBL is required.	2/6/2024