

Energy, Minerals and Natural Resources

Revised July 18, 2013

OIL CONSERVATION DIVISION
1220 South St. Francis Dr.
Santa Fe, NM 87505

Office
 District I – (575) 393-6161
 1625 N. French Dr., Hobbs, NM 88240
 District II – (575) 748-1283
 811 S. First St., Artesia, NM 88210
 District III – (505) 334-6178
 1000 Rio Brazos Rd., Aztec, NM 87410
 District IV – (505) 476-3460
 1220 S. St. Francis Dr., Santa Fe, NM
 87505

| | |
|---|--------------|
| WELL API NO. | 30-015-02245 |
| 5. Indicate Type of Lease STATE <input checked="" type="checkbox"/> FEE <input type="checkbox"/> | |
| 6. State Oil & Gas Lease No. 648 | |
| 7. Lease Name or Unit Agreement Name East Millman Unit | |
| 8. Well Number 143 | |
| 9. OGRID Number 019958 | |
| 10. Pool name or Wildcat Millman-Yates-SR-QN-GB-SA East | |

SUNDRY NOTICES AND REPORTS ON WELLS
 (DO NOT USE THIS FORM FOR PROPOSALS TO DRILL OR TO DEEPEN OR PLUG BACK TO A DIFFERENT RESERVOIR. USE "APPLICATION FOR PERMIT" (FORM C-101) FOR SUCH PROPOSALS.)

1. Type of Well: Oil Well ☐ Gas Well ☐ Other Water Injection

2. Name of Operator
 Stephens & Johnson Operating Co.

3. Address of Operator
 P O Box 2249, Wichita Falls, TX 76307-2249

4. Well Location
 Unit Letter K : 1980 feet from the South line and 1980 feet from the West line
 Section 14 Township 19S Range 28E NMPM County Eddy

11. Elevation (Show whether DR, RKB, RT, GR, etc.)
 3427' DF

12. Check Appropriate Box to Indicate Nature of Notice, Report or Other Data

NOTICE OF INTENTION TO:

PERFORM REMEDIAL WORK ☐ PLUG AND ABANDON ☐
 TEMPORARILY ABANDON ☐ CHANGE PLANS ☐
 PULL OR ALTER CASING ☐ MULTIPLE COMPL ☐
 DOWNHOLE COMMINGLE ☐
 CLOSED-LOOP SYSTEM ☐
 OTHER: ☐

SUBSEQUENT REPORT OF:

REMEDIAL WORK ☒ ALTERING CASING ☐
 COMMENCE DRILLING OPNS. ☐ P AND A ☐
 CASING/CEMENT JOB ☐
 OTHER: ☐

13. Describe proposed or completed operations. (Clearly state all pertinent details, and give pertinent dates, including estimated date of starting any proposed work). SEE RULE 19.15.7.14 NMAC. For Multiple Completions: Attach wellbore diagram of proposed completion or recompletion.

See Attachment

Spud Date:

Rig Release Date:

I hereby certify that the information above is true and complete to the best of my knowledge and belief.

SIGNATURE William M. Kincaid TITLE Petroleum Engineer DATE 1/30/2024

Type or print name William M. Kincaid E-mail address: mkincaid@sjoc.net PHONE: 940-723-2166

For State Use Only

APPROVED BY: _____ TITLE _____ DATE _____

Conditions of Approval (if any):

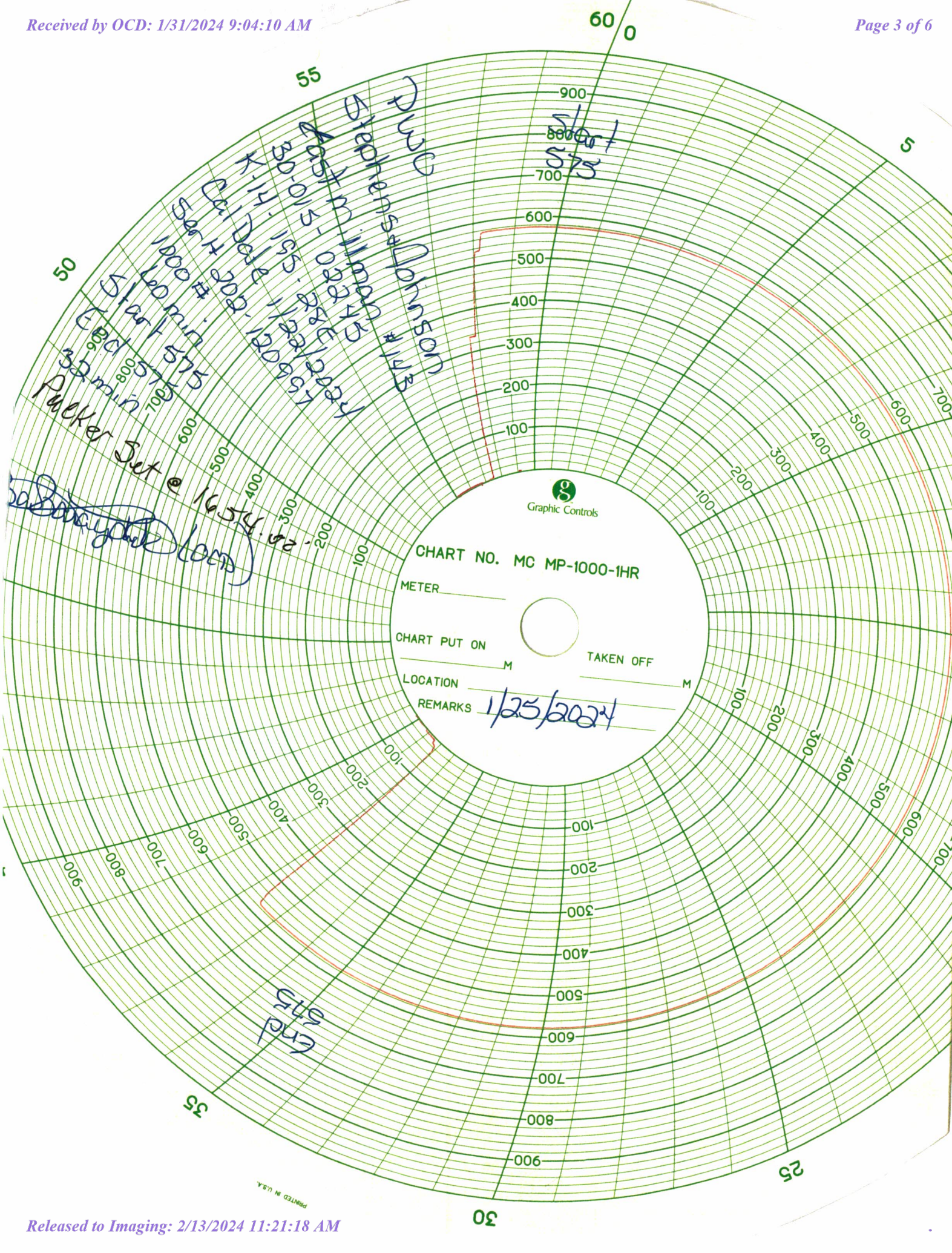
Page 2 (C-103 Attachment)
Stephens & Johnson Operating Co.
East Millman Unit No. 143
API No. 30-015-02245
Eddy County, New Mexico

Well Data:

Elevation: 3427' DF; 3425' GL
Total Depth: 2245' (Original TD @ 1892' June 1958; Deepen well in April 1963 to 2245' to run 2 7/8" liner)
PBTD: 1919' (Drillable Bridge Plug set inside 2 7/8" liner)
Surf. Csg: 8 5/8", 24# set @ 600', cmt w/150 sx
TOC: Surface
Prod. Csg: 7", 23# set @ 1892', cmt w/100 sx
TOC: Surface
Liner: 2 7/8", 5.79#, hung from 1876' down to 2238', cemented w/15 sx
Tubing: 2 3/8", 55 jts, plastic coated tbg w/7" Baker AD-1 packer set @ 1654'
Perfs: 1744-62', 1798-1814', 1860-70', 1890-96' (Bridge Plug @ 1919')
2068-71'

Workover Procedure

1-12-24 TOOH w/tbg and pkr.
1-18-24 TIH w/bit, 4 drill collars and 2 3/8" tbg. Clean out 7" csg down to 1825'.
1-19-24 Continue to clean out 7" csg down to 1876'. TOOH w/tbg, drill collars and bit. TIH w/7" AD-1 pkr and tbg. Set pkr at 1710'.
1-23-24 Acidize perfs 1744-1870' w/1,500 gals NEFE acid. Flow and swab acid load back.
1-24-24 TIH w/7" Nickel coated AD-1 pkr and plastic coated 2 3/8" tbg. ; Circulate pkr fluid in tbg-csg annulus and set pkr at 1654'.
1-25-24 Run post workover MIT witnessed by Barbara Lydick. See attached pressure chart.



PRINTED IN U.S.A.

12/20/2023

South District-Artasia

State of New Mexico
Energy, Minerals and Natural Resources Department
Oil Conservation Division Hobbs District Office

BRADENHEAD TEST REPORT

| | |
|--|-----------------------------------|
| Operator Name <i>Stephens & Johnson</i> | API Number <i>30-015-02245</i> |
| Property Name <i>East Millman</i> | Well No. <i>143</i> |

2. Surface Location

| | | | | | | | | |
|----------------------|----------------------|------------------------|---------------------|--------------------------|----------------------|--------------------------|----------------------|-----------------------|
| UL - Lot <i>K</i> | Section <i>14</i> | Township <i>19S</i> | Range <i>28E</i> | Feet from <i>1980</i> | N/S Line <i>5</i> | Feet From <i>1980</i> | E/W Line <i>W</i> | County <i>Eddy</i> |
|----------------------|----------------------|------------------------|---------------------|--------------------------|----------------------|--------------------------|----------------------|-----------------------|

Well Status

| | | | | | | | | | | |
|-----|--------------------------|-----|-------------------------|----|---------------------|-----|-----|----------|-----|--------------------------|
| YES | TA'D WELL <i>(NO)</i> | YES | SHUT-IN <i>(YES)</i> | NO | INJ <i>(INJ)</i> | SWD | OIL | PRODUCER | GAS | DATE <i>1/25/2024</i> |
|-----|--------------------------|-----|-------------------------|----|---------------------|-----|-----|----------|-----|--------------------------|

OBSERVED DATA

| | (A)Surface | (B)Interm(1) | (C)Interm(2) | (D)Prod Csg | (E)Tubing |
|----------------------|-----------------|--------------|--------------|----------------|---------------|
| Pressure | <i>Cemented</i> | | | <i>0</i> | <i>140</i> |
| Flow Characteristics | | | | | |
| Puff | Y / N | Y / N | Y / N | Y / <i>(N)</i> | CO2 |
| Steady Flow | Y / N | Y / N | Y / N | Y / <i>(N)</i> | WTR <i>✓</i> |
| Surges | Y / N | Y / N | Y / N | Y / <i>(N)</i> | GAS |
| Down to nothing | Y / N | Y / N | Y / N | Y / <i>(N)</i> | Type of Fluid |
| Gas or Oil | Y / N | Y / N | Y / N | Y / <i>(N)</i> | Injected for |
| Water | Y / N | Y / N | Y / N | Y / <i>(N)</i> | Waterflood if |
| | | | | | applies |

Remarks - Please state for each string (A,B,C,D,E) pertinent information regarding bleed down or continuous build up if applies.

PWD BHT-OK
Packer Set @ 1654.02

| | |
|---------------------------------|---------------------------|
| Signature: | OIL CONSERVATION DIVISION |
| Printed name: | Entered into RBDMS |
| Title: | Re-test |
| E-mail Address: | |
| Date: | |
| Phone: | |
| Witness: <i>En. Barry White</i> | |

INSTRUCTIONS ON BACK OF THIS FORM

East Millman Unit #143 Millman Yates SR QN GB SA

1-25-2024

WELL

East FIELD

DATE

30-015-02245

Current Wellbore Status

KB ELEVATION _____

DF ELEVATION 3427'

GL ELEVATION 3425'

PERMANENT WELL BORE DATA

DATA ON THIS COMPLETION

8 5/8" 24# Surf. Csg
set @ 600' cmt w/ 150 SX
TDC @ Surface

7" 23# Production Csg
set @ 1892' cmt w/ 100 SX
TDC @ Surface

2 3/8" 55.1ts Plastic
Coated Tubing
set at 1654' with Baker
AD-1 Packer

Queen Perfs:

1744'-1762'
1798'-1814'
1860'-1870'
1890'-1896'

Bridge Plug @ 1919'

Grayburg Perfs:

2068'-2071'

2 7/8" 5.79# Liner
Hung from 1876'-2038'
cmt w/ 15 SX

PBTD - 1919' (Bridge Plug)
TD - 2245'

District I
1625 N. French Dr., Hobbs, NM 88240
Phone:(575) 393-6161 Fax:(575) 393-0720
District II
811 S. First St., Artesia, NM 88210
Phone:(575) 748-1283 Fax:(575) 748-9720
District III
1000 Rio Brazos Rd., Aztec, NM 87410
Phone:(505) 334-6178 Fax:(505) 334-6170
District IV
1220 S. St Francis Dr., Santa Fe, NM 87505
Phone:(505) 476-3470 Fax:(505) 476-3462

State of New Mexico
Energy, Minerals and Natural Resources
Oil Conservation Division
1220 S. St Francis Dr.
Santa Fe, NM 87505

CONDITIONS

Action 309785

CONDITIONS

| | |
|---|--|
| Operator: STEPHENS & JOHNSON OP CO P.O. Box 2249 Wichita Falls, TX 76307 | OGRID: 19958 |
| | Action Number: 309785 |
| | Action Type: [C-103] Sub. Workover (C-103R) |

CONDITIONS

| Created By | Condition | Condition Date |
|---------------|-----------|----------------|
| mgebremichael | None | 2/13/2024 |