

Submit 1 Copy To Appropriate District

Office

District I – (575) 393-6161
 1625 N. French Dr., Hobbs, NM 88240
 District II – (575) 748-1283
 811 S. First St., Artesia, NM 88210
 District III – (505) 334-6178
 1000 Rio Brazos Rd., Aztec, NM 87410
 District IV – (505) 476-3460
 1220 S. St. Francis Dr., Santa Fe, NM
 87505

State of New Mexico
 Energy, Minerals and Natural Resources

Form C-103
 Revised July 18, 2013

OIL CONSERVATION DIVISION
 1220 South St. Francis Dr.
 Santa Fe, NM 87505

WELL API NO.
 30-045-09298

5. Indicate Type of Lease
 STATE ☐ FEE ☒

6. State Oil & Gas Lease No.

7. Lease Name or Unit Agreement Name
 HARTMAN 23

8. Well Number
 1

9. OGRID Number
 372171

10. Pool name or Wildcat
 Basin Dakota

SUNDRY NOTICES AND REPORTS ON WELLS

(DO NOT USE THIS FORM FOR PROPOSALS TO DRILL OR TO DEEPEN OR PLUG BACK TO A DIFFERENT RESERVOIR. USE "APPLICATION FOR PERMIT" (FORM C-101) FOR SUCH PROPOSALS.)

1. Type of Well: Oil Well ☐ Gas Well ☒ Other

2. Name of Operator
 HILCORP ENERGY COMPANY

3. Address of Operator
 382 Road 3100, Aztec, NM 87410

4. Well Location

Unit Letter M : 1086' feet from the South line and 832' feet from the West line
 Section 23 Township 30N Range 11W NMPM County San Juan

11. Elevation (Show whether DR, RKB, RT, GR, etc.)
 5888'

12. Check Appropriate Box to Indicate Nature of Notice, Report or Other Data

NOTICE OF INTENTION TO:

PERFORM REMEDIAL WORK ☐ PLUG AND ABANDON ☒
 TEMPORARILY ABANDON ☐ CHANGE PLANS ☐
 PULL OR ALTER CASING ☐ MULTIPLE COMPL ☐
 DOWNHOLE COMMINGLE ☐
 CLOSED-LOOP SYSTEM ☐
 OTHER: ☐

SUBSEQUENT REPORT OF:

REMEDIAL WORK ☐ ALTERING CASING ☐
 COMMENCE DRILLING OPNS. ☐ P AND A ☐
 CASING/CEMENT JOB ☐
 OTHER: ☐

13. Describe proposed or completed operations. (Clearly state all pertinent details, and give pertinent dates, including estimated date of starting any proposed work). SEE RULE 19.15.7.14 NMAC. For Multiple Completions: Attach wellbore diagram of proposed completion or recompletion.

Hilcorp Energy Company has plugged and abandoned the subject well on 4/17/2024 per the attached documents.

Spud Date:

Rig Release Date:

I hereby certify that the information above is true and complete to the best of my knowledge and belief.

SIGNATURE Priscilla Shorty TITLE Operations/Regulatory Technician – Sr. DATE 4/19/2024

Type or print name Priscilla Shorty E-mail address: pshorty@hilcorp.com PHONE: (505) 324-5188

For State Use Only

APPROVED BY: _____ TITLE _____ DATE _____

Conditions of Approval (if any):

HARTMAN 23 1

30.045.09298

PLUG AND ABANDONMENT

4/2/2024 – HEC ENGINEER SENT MONICA KUEHLING, NMOCD, AN EMAIL DOCUMENTING NMOCD APPROVAL TO PLACE A 4-1/2" CICR AT 6650' INSTEAD OF A 4-1/2" CIBP.

4/3/2024 – MIRU. CHECK PSI ON WELL SITP 0#, SICP 110#, BH 110#, BDW. ENGINEER INFORMED BLM & NMOCD OF BH PSI @ 110. ND WH, NU BOP, PRESSURE TEST & FUNCTION TEST BOP'S, RU RIG FLOOR. MU 4.5" CICR. PU 212 JTS OF 2.375" TBG TO 6,650'. TALLY, STRAP & RABBIT TBG. SET 4.5" CICR @ 6,650'. LW. PT TO 560 PSI & FAILED. TOO. LD STINGER. RU WIRELINE, RUN CBL FROM 6,650' TO SURFACE. POOH R/D WIRELINE. EILEEN MEDRANO, NMOCD, WAS ON LOCATION. SDFN.

4/4/2024 – CHECK PSI ON WELL SITP 0#, SICP 8#, BH 6#, BDW 2 MIN. RU WIRELINE, RIH & PERF SQUEEZES HOLES @ 6,645' (DK PERFS). POOH & RD WIRELINE. LW, INJ RATE @ 1.7 BBLS/MIN, 600 PSI. HEC ENGINEER E-MAILED MONICA KUEHLING, NMOCD, DOCUMENTING APPROVAL TO PERF @ 6645'. IF WELL GOES ON VACUUM, SET 4-1/2" CICR @ 6595' AND PUMP CMT. GOT ORDERS TO RIH W/4.5" CICR TO 6,595'. MU 4.5" CICR. TIH TO 6,595'. SET CICR @ 6,595'. RU CEMENTERS. INJ RATE UNDER CICR @ 1.5 BBLS/MIN, 902 PSI. CEMENT PLUG #1 (DK PERF & GRANEROS TOP) 52 SX 10.6 BBLS, 1.15, 15.8#, 5 GAL/SX. BOC @ 6,645'. 8 SKS ABOVE, AND 44 SKS BELOW CICR. DISPLACE 25.3 BBLS. TRIED TO REVERSE OUT BUT PRESSURE UP TO 1,100 PSI. PULLED 2 MORE STDS AND DID THE SAME. CHECKED STINGER. LAST 6 JTS OF TBG FULL OF CEMENT. MU TAG SUB. TALLY, STRAP, RABBIT 6 JTS & RIH. TAG CEMENT PLUG #1 @ 6,462'. HEC ENGINEER SENT MONICA KUEHLING, NMOCD, AN EMAIL PROPOSING CHANGES TO CMT PLUGS BASED ON CBL, SEE ATTACHED EMAIL. APPROVAL WAS GIVEN EXCEPT FOR PLUG #4 PRESSURE TEST; HEC NEEDS TO WAIT UNTIL CMT SETS TO PRESSURE TEST. PU OFF BOTTOM & R/O 67 BBLS ON TOP OF CMT PLUG & TOO. EILEEN MEDRANO, NMOCD, WAS ON LOCATION. SDFN.

4/5/2024 - CHECK PSI ON WELL SITP 0#, SICP 5#, BH 10#, BDW 1 MIN. TIH & TAG CEMENT PLUG #1 @ 6,462'. EILEEN MEDRANO, NMOCD REP, GOOD W/TAG. LW. PT TO 600 & FAILED TEST. PUMP CEMENT PLUG #2 (GALLUP TOP) 12 SX 2.3 BBLS, 1.15, 15.8#, 5 GAL/SX. BOC @ 5,897'. DISPLACE 22.2 BBLS, LD 6 JTS TO 5,709'. R/O 25 BBLS. WOC. TIH BACK TO 5,897'. DID NOT TAG #2 PLUG. CEMENT WAS NOT @ EST TOP (5,747'). PT 4.5" CASING TO 560 PSI & FAILED. HEC ENGINEER EMAILED MONICA KUEHLING NMOCD, TO DOCUMENT VERBAL APPROVAL TO SET 4-1/2" CICR @ 5,847' AND RE-PUMP PLUG #2 DUE TO HIC BETWEEN 5,897' AND 6,462'. GOT ORDERS TO SET CICR @ GALLUP TOP (5,847') & SQUEEZE 4 SX UNDER CICR & SPOT 12 SX ON TOP. TOO. LD TAG SUB. MU 4.5" CICR. TIH, SET CICR @ 5,847'. RU CEMENTERS. COULD NOT GET INJ RATE UNDER CICR. PRESSURE UP TO 1,100PSI. NMOCD GAVE VERBAL APPROVAL TO SET CMT PLUG ON TOP OF CICR @ 5,847'. RE-PUMP CEMENT PLUG #2 (GALLUP TOP) 12 SX 2.3 BBLS, 1.15, 15.8#, 5 GAL/SX BOC @ 5,847'. DISPLACE 22 BBLS, TOO & WOC OVER THE WEEKEND. SDFWE.

4/8/2024 - CHECK PSI ON WELL SITP 0#, SICP 0#, BH 0#, BDW 0 MIN. TIH & TAG CEMENT PLUG #2 @ 5,755'. EILEEN MEDRANO, NMOCD REP, GOOD W/TAG. TOO. RU WIRELINE, RIH & PERF SQUEEZES HOLES @ 4,926 (MANCOS). POOH & RD WIRELINE. MU 4.5" CICR, TIH, SET 4.5" CICR @ 4,876'. LW. INJ RATE 2.7 BBLS/MIN @ 23 PSI. PUMP CEMENT PLUG #3 (MANCOS TOP) 52 SX 10.6 BBLS, 1.15, 15.8#, 5 GAL/SX BOC @ 4,926'. 44 SXS UNDER CICR & 8 SXS ON TOP. DISPLACE 17.3 BBLS, STING OUT 1.1 BBLS. TOO & WOC. TIH & TAG CEMENT PLUG #3 (MANCOS) @ 4,752'. LW & PT TO 560 PSI & FAILED. LOST 10 PSI IN 1/MIN. PUMP CEMENT PLUG #4 (MV TOP & CHACRA TOP) 75 SX 15.2 BBLS, 1.15, 15.8#, 5 GAL/SX. BOC @ 4,072'. DISPLACE 12 BBLS, LD 32 JTS TO 3,080'. R/O 16 BBLS. TOO & WOC CEMENT PLUG #4 OVERNIGHT. SDFN.

4/9/2024 - CHECK PSI ON WELL SITP 0#, SICP 0#, BH 0#, BDW 0 MIN. TIH & TAG PLUG #4 @ 3,154'. LW. PT TO 560 PSI & FAILED. PUMP CEMENT PLUG #5 (DV TOOL & PC TOP) 27 SX 5.5 BBLS, 1.15, 15.8#, 5

HARTMAN 23 1

30.045.09298

PLUG AND ABANDONMENT

GAL/SX. BOC @ 2,448'. DISPLACE 8.1 BBLS, LD 13 JTS TO 2,075'. R/O 10 BBLS. TOO. LD STINGER. WOC. TIH & TAG PLUG #5 @ 2,159'. TOO. RU WIRELINE, RIH & PERF SQUEEZES HOLES @ 1,990' (FRD TOP). POOH & RD WIRELINE. LW. INJ RATE @ 1.3 BBLS/MIN, 900 PSI. MU 4.5" CICR, TIH, SET CICR @ 1,940'. PT TO 660 PSI FROM CICR TO SURFACE & PASSED. INJ RATE UNDER CICR 900 PSI @ 1.3 BBLS/MIN. **PUMP CEMENT PLUG #6 (FRD TOP) 52 SX 10.6 BBLS, 1.15, 15.8#, 5 GAL/SX. BOC @ 1,990'. 44 SXS UNDER CICR & 8 SXS ON TOP. DISPLACE 6 BBLS, STING OUT 1.1 BBLS. TOO. LD STINGER. WOC #6 PLUG OVERNIGHT. HEC ENGINEER EMAILED MONICA KUEHLING, NMOCD, PROVIDING UPDATE AND REQUESTING APPROVAL FOR SLIGHT CHANGES TO PLUGS #7 & #8 IF BH REMAINS AT ZERO ON 4/10/2024. APPROVAL WAS GIVEN. EILEEN MEDRANO, NMOCD, ON LOCATION. SDFN.**

4/10/2024 - CHECK PSI ON WELL SITP 0#, SICP 0#, BH 13#, BDW 1 MIN. NOTIFIED NMOCD & ENGINEER OF BH PSI @ 13 PSI OVERNIGHT. RECEIVED AN EMAIL FROM MONICA KUEHLING, NMOCD, INSTRUCTING NOT TO COMBINE THE OJO AND KIRTLAND PLUG DUE TO THE 13# ON BH. HEC ENGINEER RESPONDED THAT THEY WILL RUN SOME DIAGNOSTICS. BD BH & PT W/BH VALVE OPEN. LW. PT 4.5" CASING TO 600 PSI & PASSED. LOST 8 PSI IN 15 MINS. TIH & TAG PLUG #6 @ 1,838'. LW & PT TO 560 PSI W/BH VALVE CLOSE. LOST 8 PSI IN 15 MINS. LD TBG. WAIT ON BIG RED FOR A WELLHEAD TEST. MAKE SURE PROD. CASING & SURFACE CASING ARE NOT COMMUNICATING THROUGH THE WH. COULD NOT GET A TEST ON SEALS. FAILED TEST ON WH. (NMOCD WANTS TO MONITOR BH PSI FOR 24 HRS) EILEEN MEDRANO, NMOCD REP, ON LOCATION. SDFN.

4/11/2024 – CHECK PSI ON WELL SITP 0#, SICP 17#, BH 17#, BDW 1 MIN. EILEEN MEDRANO, NMOCD, WITNESSED BH & CASING PSI. BOTH CASING & BH HAD 17 PSI. BD PRESSURE & SHUT BACK IN. INFORMED NMOCD OFFICE & ENGINEER OF PRESSURES. NO OTHER OPERATIONS FOR THE DAY BUT MONITOR PRESSURES. MONICA KUEHLING, NMOCD, EMAILED HEC SUGGESTED PERFORATING AT 1,270' OR 1,235' TO ATTEMPT TO CUT GAS WITHIN THE KIRTLAND. HEC ENGINEER SENT AN EMAIL DOCUMENTING APPROVAL TO JET CUT 4.5" PROD CSG @ 1,110', SPOT BALANCED PLUG FROM 950' TO 1,130', AND SQUEEZE CMT THROUGH 4.5" CSG @ 1,110' BY DISPLACING CMT WITHIN 4.5" CSG BY 100', TOC IN 4.5" WILL BE DISPLACED FROM 950' TO 1,050'. WOC OVER THE WEEKEND.

4/12/2024 - CHECK PSI ON WELL SITP 0#, SICP 18#, BH 18#, BDW 1 MIN. RU WIRELINE & MU 4" JET CUTTER. RIH & JET CUT @ 1,110'. POOH & RD WIRELINE. LW. INJ RATE @ 2.1 BBLS/MIN, 650 PSI. **PUMP SQUEEZE (@ JET CUT) ULTRA FINE CEMENT 21 SX 2.9 BBLS, 0.8 YIELD, 13# & 4.05 GAL/SX BOC @ 1,130'. DISPLACE 3.6 BBLS, LD 6 JTS TO 950'. R/O 8 BBLS. TOO. LOAD 4.5" CASING WHILE TOO. W/FW. TIE PUMP TRUCK ONTO 4.5" CASING @ SURFACE & SQUEEZE 1.6 BBLS & PSI @ 450 PSI AFTER SHUT DOWN. ESTIMATED TOC IS @ 1,060'. LAST PRESSURE READING ON 4.5" CASING @ 0 PSI & 2 PSI ON BH. JOHN DURHAM, NMOCD, ON LOCATION. SDFWE.**

4/15/2024 - CHECK PSI ON WELL SITP 0#, SICP 14#, BH 15#, BDW 1 MIN. JOHN DURHAM, NMOCD, WITNESSED BH & CASING PSI. INFORMED NMOCD OFFICE & ENGINEER OF PRESSURES. NO DECISIONS FROM BOTH PARTIES TO PROCEED WITH OPERATIONS. HEC ENGINEER SENT MONICA KUEHLING, NMOCD, AN EMAIL REQUESTING APPROVAL TO TAG CMT, JET CUT @ 1015' AND PROCEED WITH CEMENT OPERATIONS AS OUTLINED IN ATTACHED EMAIL. RIG DOWN AND PRODUCE BH TO THE PIT. HEC WILL MOVE BACK TO WELL AFTER BH PRESSURE IS LOW. SDFN.

4/16/2024 - CHECK PSI ON WELL SITP 0#, SICP 17#, BH 18#, BDW 1 MIN. INFORMED NMOCD OFFICE & ENGINEER OF PRESSURES. TIH & TAG CEMENT @ 1,116'. TOO. GOT APPROVALS FROM HOUSTON TO WELD H-PLATE IN WH. LOAD 4.5" CASING & BH W/FW. ND BOP, HAVE FIRE WATCH IN PLACE & HOT WORK PERMIT FILLED OUT. WELD H-PLATE TO WH & 4.5" CASING. LET WELD COLD DOWN BEFORE

HARTMAN 23 1**30.045.09298****PLUG AND ABANDONMENT**

PUMPING ANY WATER. LW & PT 4.5" CASING TO 300 PSI & FAILED. LOST 30 PSI IN 1.5 MINS. MU 4.5" PACKER RIH TO 72' & PT FROM 72' TO SURFACE. GOOD TEST @ 560 PSI & **JOHN DURHAM, NMOCD REP, APPROVED TEST**. TIE ONTO TBG & PT FROM 72' TO 1,110' (300PSI) FAILED TEST. LOST 30 PSI IN 1.5 MINS. TIH TO 900'. SET PACKER @ 900'. PT FROM 900' TO SURFACE (560PSI). GOOD TEST. PT FROM 900' TO 1,110' (300PSI). FAILED TEST. LOST 30 PSI IN 1.5 MINS. TOO H & LD PACKER. MU TAG SUB TIH TO 1,116'. **HEC ENGINEER SENT MONICA KUEHLING, NMOCD, AN EMAIL DOCUMENTING WH REPAIR AND VERBAL APPROVAL TO SET BALANCED PLUG FROM 960' TO 1,116', TOO H AND MAINTAIN 300 PSI IN 4.5" CSG OVERNIGHT. PUMP SQUEEZE #2 (@ JET CUT) ULTRA FINE CEMENT 18 SX 2.4 BBLS, 0.8 YIELD, 13# & 4.05 GAL/SX. BOC @ 1,116'. DISPLACE 3.7 BBLS, LD 5 JTS TO 955'. R/O 8 BBLS. TOO H. WELLCHECK RU NITROGEN BOTTLES & PUT 300 PSI ON CASING OVERNIGHT. SDFN.**

4/17/2024 - CHECK PSI ON WELL SITP 0#, SICP 320#, BH 0#, BDW 1 MIN. INFORMED NMOCD OFFICE & ENGINEER OF PRESSURES. 320 PSI ON SICP FROM NITROGEN LEFT ON 4.5" CASING OVERNIGHT FOR CEMENT JOB. TIH & **TAG CEMENT PLUG #7 (KRD) @ 1,002'**. **HEC ENGINEER EMAILED, MONICA KUEHLING, DOCUMENTING VERBAL APPROVAL TO MOVE AHEAD WITH PLUG #7 & #8. MONICA KUEHLING REQUESTED A 2 HR SHUT-IN ON THE BH. WAIT ON FINAL PRESSURE READING ON BH @ 9AM. JOHN DURHAM, NMOCD REP, ON LOCATION AND GOOD W/READING OF 0 PSI ON BH & PROCEED WITH P&A OPERATIONS. CIRC WELL CLEAN. PUMP CEMENT PLUG #8 (OJO TOP & KRD TOP) 23 SX 4.6 BBLS, 1.15, 15.8#, 5 GAL/SX. BOC @ 1,002'. DISPLACE 2.7 BBLS. TOO H. WOC. TIH & TAG CEMENT PLUG #8 @ 752'. TOO H. RU WIRELINE, RIH & PERF CIRC. HOLES @ 230' (SURFACE). POOH & RD WIRELINE. LW. INJ RATE @ 2 BBLS/MIN, 110 PSI. TIH TO 348' (50' BELOW NAC TOP). RU CEMENTERS. PUMP CEMENT PLUG #9 (SURFACE & NAC TOP) 80 SX 4.6 BBLS, 1.15, 15.8#, 5 GAL/SX. TOC @ 0', BOC @ 348' & FROM 230' TO 0' INSIDE 8-5/8" SURFACE CASING. WOC. RD RIG FLOOR, ND BOP. CUT OFF WH, (TOC IN 4.5" PROD 0' & 8-5/8" SURFACE 15') WELD ON P&A MARKER. RU 1" POLY LINE RUN IN 8-5/8" CASING. FILL CASING AND CELLAR WITH 13 SXS CEMENT. RD RR.**

WELL WAS PLUGGED AND ABANDONED ON 4/17/2024.

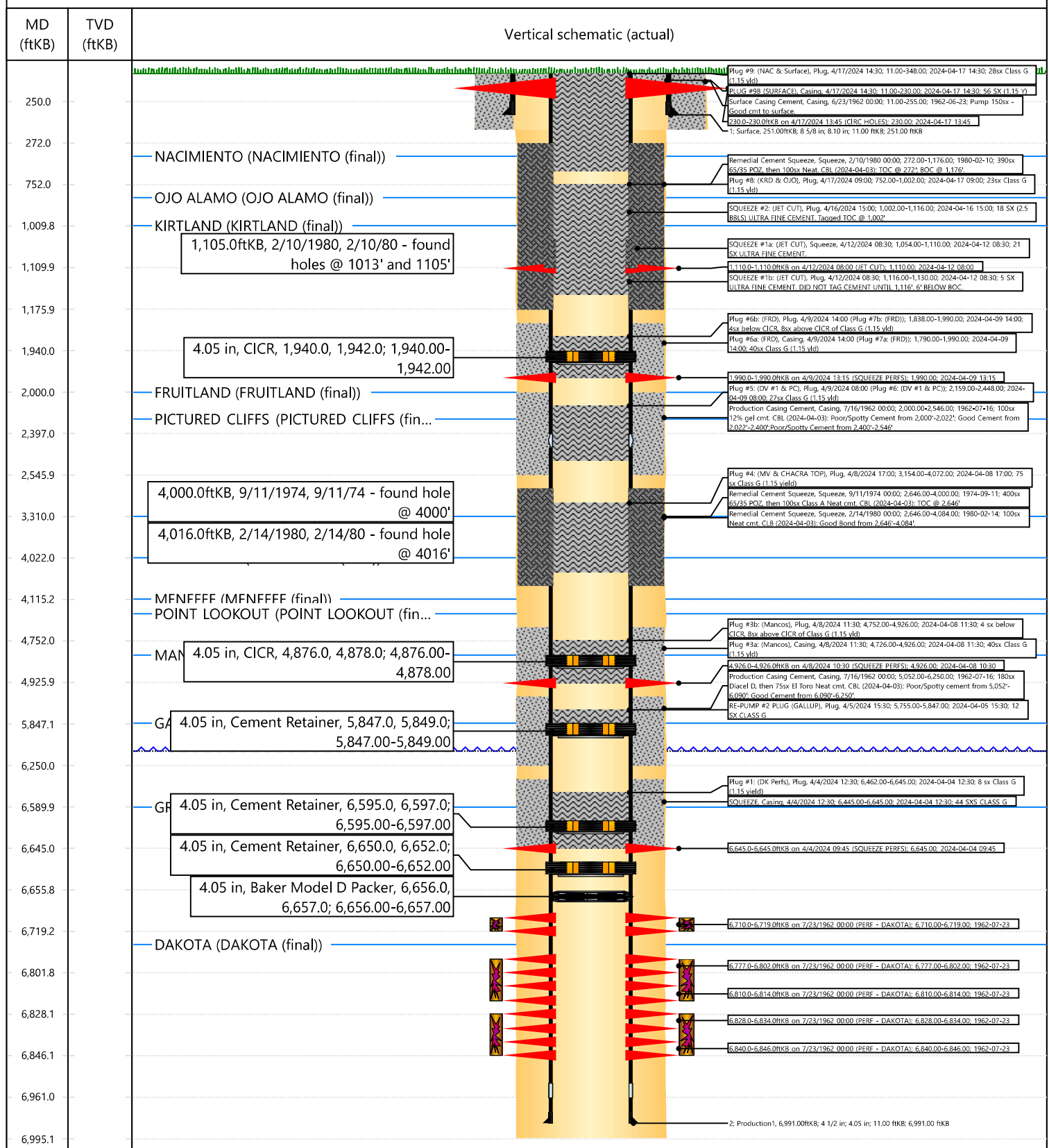


Current Schematic - Version 3

Well Name: HARTMAN 23 001

API / UWI 3004509298	Surface Legal Location 023-030N-011W-M	Field Name DK	Route 0700	State/Province NEW MEXICO	Well Configuration Type Vertical
Ground Elevation (ft) 5,888.00	Original KB/RT Elevation (ft) 5,898.00	Tubing Hanger Elevation (ft) 5,888.00	RKB to GL (ft) 10.00	KB-Casing Flange Distance (ft) 10.00	KB-Tubing Hanger Distance (ft) 10.00

Original Hole [Vertical]



Priscilla Shorty

From: Kuehling, Monica, EMNRD <monica.kuehling@emnrd.nm.gov>
Sent: Wednesday, April 17, 2024 8:35 AM
To: John LaMond
Cc: Rennick, Kenneth G; Kade, Matthew H; Farmington Regulatory Techs; Brice Clyde - (C); Clay Padgett; Lee Murphy; Rustin Mikeska; Medrano, Eileen, EMNRD; Durham, John, EMNRD
Subject: RE: [EXTERNAL] P&A Revision for Hilcorp's HARTMAN 23 1 (API # 3004509298)

CAUTION: External sender. DO NOT open links or attachments from UNKNOWN senders.

NMOCD approves below after 2 hour shut in on bradenhead.

Thank you

Monica Kuehling
Compliance Officer Supervisor
Deputy Oil and Gas Inspector
New Mexico Oil Conservation Division
North District
Office Phone: 505-334-6178 ext. 123
Cell Phone: 505-320-0243
Email - monica.kuehling@emnrd.nm.gov

From: John LaMond <jlamond@hilcorp.com>
Sent: Wednesday, April 17, 2024 8:20 AM
To: Kuehling, Monica, EMNRD <monica.kuehling@emnrd.nm.gov>
Cc: Rennick, Kenneth G <krennick@blm.gov>; Kade, Matthew H <mkade@blm.gov>; Farmington Regulatory Techs <FarmingtonRegulatoryTechs@hilcorp.com>; Brice Clyde - (C) <Brice.Clyde@hilcorp.com>; Clay Padgett <cpadgett@hilcorp.com>; Lee Murphy <lmurphy@hilcorp.com>; Rustin Mikeska <rmikeska@hilcorp.com>; Medrano, Eileen, EMNRD <Eileen.Medrano@emnrd.nm.gov>; Durham, John, EMNRD <john.durham@emnrd.nm.gov>; John LaMond <jlamond@hilcorp.com>
Subject: RE: [EXTERNAL] P&A Revision for Hilcorp's HARTMAN 23 1 (API # 3004509298)

Good morning Monica,

Per our phone conversation, after pumping our plug yesterday we arrived on location this morning (4/17/2024) to find our BH = 0 psi. This morning we ran in hole & tagged cement @ 1,002'.

Moving forward, Hilcorp received verbal approval for the following:

PLUG #7: 23sx of Class G Cement (15.8 PPG, 1.15 yes); KRD @ 1,010' | OJO Top @ 910'
- Pump a 23 sack balanced cement plug inside the 4-1/2" casing (est. TOC @ +/- 710' & est. BOC @ +/- 1002').
- WOC 4 hrs & Tag

PLUG #8: Surface casing shoe @ 251' & NAC top @ 285'

- Perforate Circ holes @ 230'; establish circulation
- TIH w/ tubing to 348'.
- Pump inside plug from 348' to surface and outside plug from 230' to surface.
- Top off as needed

Please let me know if you have any questions.

Thanks,

John LaMond

Operations Engineer – Technical Services
Hilcorp Energy Company
1111 Travis
Houston, TX 77002
346-237-2210 (Office)
832-754-9692 (Cell)
jlamond@hilcorp.com

From: Kuehling, Monica, EMNRD <monica.kuehling@emnrd.nm.gov>
Sent: Tuesday, April 16, 2024 2:11 PM
To: John LaMond <jlamond@hilcorp.com>
Cc: Rennick, Kenneth G <krennick@blm.gov>; Kade, Matthew H <mkade@blm.gov>; Farmington Regulatory Techs <FarmingtonRegulatoryTechs@hilcorp.com>; Brice Clyde - (C) <Brice.Clyde@hilcorp.com>; Clay Padgett <cpadgett@hilcorp.com>; Lee Murphy <lmurphy@hilcorp.com>; Rustin Mikeska <rmikeska@hilcorp.com>; Medrano, Eileen, EMNRD <Eileen.Medrano@emnrd.nm.gov>; Durham, John, EMNRD <john.durham@emnrd.nm.gov>
Subject: RE: [EXTERNAL] P&A Revision for Hilcorp's HARTMAN 23 1 (API # 3004509298)

CAUTION: External sender. DO NOT open links or attachments from UNKNOWN senders.

NMOCD approval given

Monica Kuehling
Compliance Officer Supervisor
Deputy Oil and Gas Inspector
New Mexico Oil Conservation Division
North District
Office Phone: 505-334-6178 ext. 123
Cell Phone: 505-320-0243
Email - monica.kuehling@emnrd.nm.gov

From: John LaMond <jlamond@hilcorp.com>
Sent: Tuesday, April 16, 2024 12:11 PM
To: Kuehling, Monica, EMNRD <monica.kuehling@emnrd.nm.gov>
Cc: Rennick, Kenneth G <krennick@blm.gov>; Kade, Matthew H <mkade@blm.gov>; Farmington Regulatory Techs <FarmingtonRegulatoryTechs@hilcorp.com>; Brice Clyde - (C) <Brice.Clyde@hilcorp.com>; Clay Padgett <cpadgett@hilcorp.com>; Lee Murphy <lmurphy@hilcorp.com>; Rustin Mikeska <rmikeska@hilcorp.com>; Medrano, Eileen, EMNRD <Eileen.Medrano@emnrd.nm.gov>; Durham, John, EMNRD <john.durham@emnrd.nm.gov>; John

LaMond <jlamond@hilcorp.com>

Subject: RE: [EXTERNAL] P&A Revision for Hilcorp's HARTMAN 23 1 (API # 3004509298)

Good afternoon Monica,

Per our phone conversation, we repaired the wellhead and TIH w/ a packer to 72'. We got a good pressure test @ 560 psi between the packer and the wellhead (successful repair). The pressure test on the 4.5" casing below the packer failed (300 psi test dropped 30 psi in 90 seconds). Additionally, an injection rate could not be established.

Moving forward, Hilcorp gained verbal approval from the NMOCD to perform the following:

- RIH w/ work string and tag TOC @ 1,116'
- Spot a balanced plug from 960' to 1,116'
 - 18sx fine grain cement (13 ppg, 0.8 yld)
- TOOH w/ tubing to 960', reverse circulate
- TOOH w/ tubing
- Maintain 300 psi in the 4.5" casing overnight
- WOC overnight and check pressures in the morning

Please let me know if you have any questions or concerns.

Thanks,

John LaMond

Operations Engineer – Technical Services

Hilcorp Energy Company

1111 Travis

Houston, TX 77002

346-237-2210 (Office)

832-754-9692 (Cell)

jlamond@hilcorp.com

From: John LaMond <jlamond@hilcorp.com>

Sent: Tuesday, April 16, 2024 9:29 AM

To: Kuehling, Monica, EMNRD <monica.kuehling@emnrd.nm.gov>

Cc: Rennick, Kenneth G <krennick@blm.gov>; Kade, Matthew H <mkade@blm.gov>; Farmington Regulatory Techs <FarmingtonRegulatoryTechs@hilcorp.com>; Brice Clyde - (C) <Brice.Clyde@hilcorp.com>; Clay Padgett <cpadgett@hilcorp.com>; Lee Murphy <lmurphy@hilcorp.com>; Rustin Mikeska <rmikeska@hilcorp.com>; Medrano, Eileen, EMNRD <Eileen.Medrano@emnrd.nm.gov>; Durham, John, EMNRD <john.durham@emnrd.nm.gov>; John LaMond <jlamond@hilcorp.com>

Subject: RE: [EXTERNAL] P&A Revision for Hilcorp's HARTMAN 23 1 (API # 3004509298)

Good morning Monica,

We did not work on the well yesterday; all we did was read pressures and develop a game plan for path forward as you have approved below.

This morning the BH pressure read 18 psi, and the 4.5" casing pressure read 17 psi.

We RIH this morning and tagged TOC @ 1,116' (6' below our jet cut @ 1,110'). This will change the scope of our path forward.

The repair work on the wellhead is currently under way, in which a welder will be welding the H plate to the BH & Casing to create a seal. Once we repair the wellhead and review the results of our pressure test we will come up with a game plan that will likely differ from what I have outlined below. I will give you a call to review this as well.

Please let me know if you have any questions.

Thanks,

John LaMond

Operations Engineer – Technical Services
Hilcorp Energy Company
1111 Travis
Houston, TX 77002
346-237-2210 (Office)
832-754-9692 (Cell)
jlamond@hilcorp.com

From: Kuehling, Monica, EMNRD <monica.kuehling@emnrd.nm.gov>

Sent: Tuesday, April 16, 2024 9:14 AM

To: John LaMond <jlamond@hilcorp.com>

Cc: Rennick, Kenneth G <krennick@blm.gov>; Kade, Matthew H <mkade@blm.gov>; Farmington Regulatory Techs <FarmingtonRegulatoryTechs@hilcorp.com>; Brice Clyde - (C) <Brice.Clyde@hilcorp.com>; Clay Padgett <cpadgett@hilcorp.com>; Lee Murphy <lmurphy@hilcorp.com>; Rustin Mikeska <rmikeska@hilcorp.com>; Medrano, Eileen, EMNRD <Eileen.Medrano@emnrd.nm.gov>; Durham, John, EMNRD <john.durham@emnrd.nm.gov>

Subject: RE: [EXTERNAL] P&A Revision for Hilcorp's HARTMAN 23 1 (API # 3004509298)

CAUTION: External sender. DO NOT open links or attachments from UNKNOWN senders.

John

Where did you tag yesterday

What is the pressure on the bh this morning.

What repair was done to the wellhead

Approval is given for cement work below

Thank you

Monica Kuehling
Compliance Officer Supervisor
Deputy Oil and Gas Inspector
New Mexico Oil Conservation Division
North District
Office Phone: 505-334-6178 ext. 123
Cell Phone: 505-320-0243

Email - monica.kuehling@emnrd.nm.gov

From: John LaMond <jlamond@hilcorp.com>

Sent: Monday, April 15, 2024 10:53 AM

To: Kuehling, Monica, EMNRD <monica.kuehling@emnrd.nm.gov>

Cc: Rennick, Kenneth G <krennick@blm.gov>; Kade, Matthew H <mkade@blm.gov>; Farmington Regulatory Techs <FarmingtonRegulatoryTechs@hilcorp.com>; Brice Clyde - (C) <Brice.Clyde@hilcorp.com>; Clay Padgett <cpadgett@hilcorp.com>; Lee Murphy <lmurphy@hilcorp.com>; Rustin Mikeska <rmikeska@hilcorp.com>; Medrano, Eileen, EMNRD <Eileen.Medrano@emnrd.nm.gov>; Durham, John, EMNRD <john.durham@emnrd.nm.gov>; John LaMond <jlamond@hilcorp.com>

Subject: RE: [EXTERNAL] P&A Revision for Hilcorp's HARTMAN 23 1 (API # 3004509298)

Good morning Monica,

Per your request I am resending this email. Do you approve of the work outlined below?

Thanks,

John LaMond

Operations Engineer – Technical Services

Hilcorp Energy Company

1111 Travis

Houston, TX 77002

346-237-2210 (Office)

832-754-9692 (Cell)

jlamond@hilcorp.com

From: John LaMond <jlamond@hilcorp.com>

Sent: Monday, April 15, 2024 10:19 AM

To: Kuehling, Monica, EMNRD <monica.kuehling@emnrd.nm.gov>

Cc: Rennick, Kenneth G <krennick@blm.gov>; Kade, Matthew H <mkade@blm.gov>; Farmington Regulatory Techs <FarmingtonRegulatoryTechs@hilcorp.com>; Brice Clyde - (C) <Brice.Clyde@hilcorp.com>; Clay Padgett <cpadgett@hilcorp.com>; Lee Murphy <lmurphy@hilcorp.com>; Rustin Mikeska <rmikeska@hilcorp.com>; Medrano, Eileen, EMNRD <Eileen.Medrano@emnrd.nm.gov>; Durham, John, EMNRD <john.durham@emnrd.nm.gov>; John LaMond <jlamond@hilcorp.com>

Subject: RE: [EXTERNAL] P&A Revision for Hilcorp's HARTMAN 23 1 (API # 3004509298)

Good morning Monica,

Per our phone conversation, we performed the squeeze on Friday and allowed the cement to set over the weekend. Upon arriving on location this morning (4/15/2024), we found our Bradenhead pressure to be 15 psi and our 4.5" production casing to be 14 psi.

Moving forward, Hilcorp requests to perform the following:

- RIH w/ work string and tag TOC (Estimated top @ 1,050'). Verify TOC.
- RU wireline, RIH & jet cut 4.5" production casing @ 1,015'; establish injection

- RIH w/ work string to 1,050' (or verified TOC)
- Spot a balanced plug from 930' to 1,050'
 - 14sx fine grain cement (13 ppg, 0.8 yld)
- TOO H w/ tubing to 930', reverse circulate
- TOO H w/ tubing
- Squeeze cement through jet cut 4.5" casing @ 1,015' by displacing cement within 4.5" casing by 55' (~6sx displaced into 7-7/8" open hole x 4.5" casing annulus)
 - Top of cement in 4.5" casing will be displaced from 930' to 985'.
- **Rig will be rigged down and moved to the next P&A well. Cement on Hartman 23 1 will cure over time with the rig gone. If BH pressure remains, the BH will be blown down to the pit until BH pressure is low enough to return to the well.**

Please let me know if you have any questions or concerns.

Thanks,

John LaMond

Operations Engineer – Technical Services
 Hilcorp Energy Company
 1111 Travis
 Houston, TX 77002
 346-237-2210 (Office)
 832-754-9692 (Cell)
jlamond@hilcorp.com

From: Kuehling, Monica, EMNRD <monica.kuehling@emnrd.nm.gov>

Sent: Thursday, April 11, 2024 4:53 PM

To: John LaMond <jlamond@hilcorp.com>

Cc: Rennick, Kenneth G <kreennick@blm.gov>; Kade, Matthew H <mkade@blm.gov>; Farmington Regulatory Techs <FarmingtonRegulatoryTechs@hilcorp.com>; Brice Clyde - (C) <Brice.Clyde@hilcorp.com>; Clay Padgett <cpadgett@hilcorp.com>; Lee Murphy <lmurphy@hilcorp.com>; Rustin Mikeska <rmikeska@hilcorp.com>; Medrano, Eileen, EMNRD <Eileen.Medrano@emnrd.nm.gov>; Durham, John, EMNRD <john.durham@emnrd.nm.gov>

Subject: RE: [EXTERNAL] P&A Revision for Hilcorp's HARTMAN 23 1 (API # 3004509298)

CAUTION: External sender. DO NOT open links or attachments from UNKNOWN senders.

NMOCD approves below

John – In this particular case - If you have any trouble tomorrow please call Loren Diede 505-394-3582 – However, I will have my phone with me – you can call me but I will be in and out of service.

I will be out of the office on Monday as well – however, I will have my phone – please call to let me know what you find on the bradenhead Monday and then we can work on how to go forward – Gilbert Cordero 575-626-0830 will be out on Monday and Loren will be unavailable

John Durham will be on site tomorrow and Monday.

Thank you

Monica Kuehling
Compliance Officer Supervisor
Deputy Oil and Gas Inspector
New Mexico Oil Conservation Division
North District
Office Phone: 505-334-6178 ext. 123
Cell Phone: 505-320-0243
Email - monica.kuehling@emnrd.nm.gov

From: John LaMond <jlamond@hilcorp.com>
Sent: Thursday, April 11, 2024 3:10 PM
To: Kuehling, Monica, EMNRD <monica.kuehling@emnrd.nm.gov>
Cc: Rennick, Kenneth G <krennick@blm.gov>; Kade, Matthew H <mkade@blm.gov>; Farmington Regulatory Techs <FarmingtonRegulatoryTechs@hilcorp.com>; Brice Clyde - (C) <Brice.Clyde@hilcorp.com>; Clay Padgett <cpadgett@hilcorp.com>; Lee Murphy <lmurphy@hilcorp.com>; Rustin Mikeska <rmikeska@hilcorp.com>; Medrano, Eileen, EMNRD <Eileen.Medrano@emnrd.nm.gov>; John LaMond <jlamond@hilcorp.com>
Subject: RE: [EXTERNAL] P&A Revision for Hilcorp's HARTMAN 23 1 (API # 3004509298)

Good afternoon Monica,

Per our phone conversation, Hilcorp was provided verbal approval for the following:

- RU wireline, RIH & jet cut 4.5" production casing @ 1,110'; establish injection
- RIH w/ work string to 1,130'
- Spot a balanced plug from 950' to 1,130'
 - 21sx fine grain cement (13 ppg, 0.8 yld)
- TOOH w/ tubing to 950', reverse circulate
- TOOH w/ tubing
- Squeeze cement through jet cut 4.5" casing @ 1,110' by displacing cement within 4.5" casing by 100' (~11sx displaced into 7-7/8" open hole x 4.5" casing annulus)
 - Top of cement in 4.5" casing will be displaced from 950' to 1,050'
- WOC over weekend

Please let me know if you have any questions.

Thanks,

John LaMond

Operations Engineer – Technical Services
Hilcorp Energy Company
1111 Travis
Houston, TX 77002
346-237-2210 (Office)
832-754-9692 (Cell)
jlamond@hilcorp.com

From: Kuehling, Monica, EMNRD <monica.kuehling@emnrd.nm.gov>
Sent: Thursday, April 11, 2024 12:44 PM

To: John LaMond <jlamond@hilcorp.com>

Cc: Rennick, Kenneth G <krennick@blm.gov>; Kade, Matthew H <mkade@blm.gov>; Farmington Regulatory Techs <FarmingtonRegulatoryTechs@hilcorp.com>; Brice Clyde - (C) <Brice.Clyde@hilcorp.com>; Clay Padgett <cpadgett@hilcorp.com>; Lee Murphy <lmurphy@hilcorp.com>; Rustin Mikeska <rmikeska@hilcorp.com>; Medrano, Eileen, EMNRD <Eileen.Medrano@emnrd.nm.gov>

Subject: RE: [EXTERNAL] P&A Revision for Hilcorp's HARTMAN 23 1 (API # 3004509298)

CAUTION: External sender. DO NOT open links or attachments from UNKNOWN senders.

John

So what we are looking at is the open Kirtland formation from top of fruitland to 1180. You have really good cement at 1000 feet – it is really sketchy on whether you would get anything in there cut pipe or not.

We would suggest perfing at 1270 or 1235 to attempt to cut gas within the Kirtland

Thank you

Monica

From: John LaMond <jlamond@hilcorp.com>

Sent: Wednesday, April 10, 2024 9:04 AM

To: Kuehling, Monica, EMNRD <monica.kuehling@emnrd.nm.gov>

Cc: Rennick, Kenneth G <krennick@blm.gov>; Kade, Matthew H <mkade@blm.gov>; Farmington Regulatory Techs <FarmingtonRegulatoryTechs@hilcorp.com>; Brice Clyde - (C) <Brice.Clyde@hilcorp.com>; Clay Padgett <cpadgett@hilcorp.com>; Lee Murphy <lmurphy@hilcorp.com>; Rustin Mikeska <rmikeska@hilcorp.com>; Medrano, Eileen, EMNRD <Eileen.Medrano@emnrd.nm.gov>

Subject: RE: [EXTERNAL] P&A Revision for Hilcorp's HARTMAN 23 1 (API # 3004509298)

Hi Monica,

Per our discussion, we are going to run some diagnostics today. We will then shut the bradenhead back in and check it in the morning. If the Bradenhead reads 0 psi in the morning, we will proceed with combining the KRD/OJO plug and proceed with the procedure as outlined in my email below.

We will report what the bradenhead pressure is in the morning prior to performing any work.

Thanks,

John LaMond

Operations Engineer – Technical Services

Hilcorp Energy Company

1111 Travis

Houston, TX 77002

346-237-2210 (Office)

832-754-9692 (Cell)

jlamond@hilcorp.com

From: Kuehling, Monica, EMNRD <monica.kuehling@emnrd.nm.gov>
Sent: Wednesday, April 10, 2024 9:21 AM
To: John LaMond <jlamond@hilcorp.com>
Cc: Rennick, Kenneth G <krennick@blm.gov>; Kade, Matthew H <mkade@blm.gov>; Farmington Regulatory Techs <FarmingtonRegulatoryTechs@hilcorp.com>; Brice Clyde - (C) <Brice.Clyde@hilcorp.com>; Clay Padgett <cpadgett@hilcorp.com>; Lee Murphy <lmurphy@hilcorp.com>; Rustin Mikeska <rmikeska@hilcorp.com>; Medrano, Eileen, EMNRD <Eileen.Medrano@emnrd.nm.gov>
Subject: RE: [EXTERNAL] P&A Revision for Hilcorp's HARTMAN 23 1 (API # 3004509298)

CAUTION: External sender. DO NOT open links or attachments from UNKNOWN senders.

John

There was 13 psi on the bradenhead this morning

Cannot combine ojo/Kirtland plug

Monica

From: John LaMond <jlamond@hilcorp.com>
Sent: Tuesday, April 9, 2024 3:01 PM
To: Kuehling, Monica, EMNRD <monica.kuehling@emnrd.nm.gov>
Cc: Rennick, Kenneth G <krennick@blm.gov>; Kade, Matthew H <mkade@blm.gov>; Farmington Regulatory Techs <FarmingtonRegulatoryTechs@hilcorp.com>; Brice Clyde - (C) <Brice.Clyde@hilcorp.com>; Clay Padgett <cpadgett@hilcorp.com>; Lee Murphy <lmurphy@hilcorp.com>; Rustin Mikeska <rmikeska@hilcorp.com>; Medrano, Eileen, EMNRD <Eileen.Medrano@emnrd.nm.gov>
Subject: Re: [EXTERNAL] P&A Revision for Hilcorp's HARTMAN 23 1 (API # 3004509298)

Good Afternoon Monica,

As discussed on the phone, the Bradenhead pressure the past two mornings has read 0 psi.

Additionally, after setting our CICR @ 1,940' and before pumping Plug #6, we pressure tested the 4.5" production casing and got a good test.

Moving forward, Hilcorp requests the following:

Verify BH = 0 psi on morning of 4/10/2024.

PLUG #7: 20sx of Class G Cement (15.8 PPG, 1.15 yes); KRD Top @ 1,010', OJO Top @ 910'
- Previously called "PLUG #8" in the approved NOI, pump this plug as described in the approved NOI - No changes.
- No WOC or Tag if good pressure test and tag on Plug #6 (FRD plug pumped today, 4/9/2024)

PLUG #8: Surface casing shoe @ 251' & NAC top @ 285'
- Perforate Circ holes @ 230'; establish circulation
- TIH w/ tubing to 348'.
- Pump inside plug from 348' to surface and outside plug from 230' to surface.
- Top off as needed

Please let me know if you have any concerns with this plan.

Thanks,

John LaMond

Sent from my iPhone

On Apr 8, 2024, at 7:41 AM, Kuehling, Monica, EMNRD <monica.kuehling@emnrd.nm.gov> wrote:

CAUTION: External sender. DO NOT open links or attachments from UNKNOWN senders.

Verbal given Friday April 5, 2024

Thank you

Monica Kuehling
Compliance Officer Supervisor
Deputy Oil and Gas Inspector
New Mexico Oil Conservation Division
North District
Office Phone: 505-334-6178 ext. 123
Cell Phone: 505-320-0243
Email - monica.kuehling@emnrd.nm.gov

From: John LaMond <jlamond@hilcorp.com>
Sent: Friday, April 5, 2024 3:45 PM
To: Kuehling, Monica, EMNRD <monica.kuehling@emnrd.nm.gov>; Rennick, Kenneth G <krennick@blm.gov>; Kade, Matthew H <mkade@blm.gov>
Cc: Farmington Regulatory Techs <FarmingtonRegulatoryTechs@hilcorp.com>; Brice Clyde - (C) <Brice.Clyde@hilcorp.com>; Clay Padgett <cpadgett@hilcorp.com>; Lee Murphy <lmurphy@hilcorp.com>; Rustin Mikeska <rmikeska@hilcorp.com>; Medrano, Eileen, EMNRD <Eileen.Medrano@emnrd.nm.gov>; John LaMond <jlamond@hilcorp.com>
Subject: RE: [EXTERNAL] P&A Revision for Hilcorp's HARTMAN 23 1 (API # 3004509298)

Good afternoon Monica,

As discussed on the phone, we set the 4-1/2" CICR @ 5,847', but were unsuccessful at establishing an injection rate beneath the CICR.

Per our conversation, Hilcorp received verbal approval to proceed with pumping the 150' plug on top of the CICR for Plug #2, and forgo pumping cement beneath the retainer since we are unable to establish an injection rate.

Plug #2 is now as follows:

1. RE-PUMP PLUG #2: 12sx of Class G Cement (15.8 PPG, 1.15 yield); GAL Top @ 5,847':

1. Pump a 12 sack balanced cement plug inside the 4-1/2" casing above the CICR set @ 5,847' (est. TOC @ +/- 5,697' & est. BOC @ +/- 5,847').
2. WOC & Tag
2. Proceed with remaining plugging approvals outline in email chain below.

Please let me know if you have any questions.

Thanks,

John LaMond

Operations Engineer – Technical Services
Hilcorp Energy Company
1111 Travis
Houston, TX 77002
346-237-2210 (Office)
832-754-9692 (Cell)
jlamond@hilcorp.com

From: John LaMond <jlamond@hilcorp.com>
Sent: Friday, April 5, 2024 2:20 PM
To: Kuehling, Monica, EMNRD <monica.kuehling@emnrd.nm.gov>; Rennick, Kenneth G <krennick@blm.gov>; Kade, Matthew H <mkade@blm.gov>
Cc: Farmington Regulatory Techs <FarmingtonRegulatoryTechs@hilcorp.com>; Brice Clyde - (C) <Brice.Clyde@hilcorp.com>; Clay Padgett <cpadgett@hilcorp.com>; Lee Murphy <lmurphy@hilcorp.com>; Rustin Mikeska <rmikeska@hilcorp.com>; Medrano, Eileen, EMNRD <Eileen.Medrano@emnrd.nm.gov>; John LaMond <jlamond@hilcorp.com>
Subject: RE: [EXTERNAL] P&A Revision for Hilcorp's HARTMAN 23 1 (API # 3004509298)

Good afternoon Monica,

Thank you for your time this afternoon. As discussed in our conversation: After pumping PLUG #2, we RIH to tag the plug after WOC and were unsuccessful at tagging cement down to 5,897'. This indicates the HIC between 5,897' and our top plug @ 6,462' (where we tagged Plug #1).

Per our conversation this afternoon, Hilcorp received verbal approval for the following:

3. RE-PUMP PLUG #2: 16sx of Class G Cement (15.8 PPG, 1.15 yield); GAL Top @ 5,847':
 1. Set a 4-1/2" CICR @ 5,847'
 2. Pump a 4 sack balanced cement plug inside the 4-1/2" casing below the CICR (est. TOC @ +/- 5,847' & est. BOC @ +/- 5,897').
 3. Pump a 12 sack balanced cement plug inside the 4-1/2" casing above the CICR (est. TOC @ +/- 5,697' & est. BOC @ +/- 5,847').
 4. WOC & Tag
4. Proceed with remaining plugging approvals outline in email chain below.

Please let me know if you have any questions.

Thanks,

John LaMond

Operations Engineer – Technical Services
Hilcorp Energy Company
1111 Travis
Houston, TX 77002
346-237-2210 (Office)
832-754-9692 (Cell)
jlamond@hilcorp.com

From: Kuehling, Monica, EMNRD <monica.kuehling@emnrd.nm.gov>
Sent: Thursday, April 4, 2024 4:44 PM
To: John LaMond <jlamond@hilcorp.com>; Rennick, Kenneth G <krennick@blm.gov>; Kade, Matthew H <mkade@blm.gov>
Cc: Farmington Regulatory Techs <FarmingtonRegulatoryTechs@hilcorp.com>; Brice Clyde - (C) <Brice.Clyde@hilcorp.com>; Clay Padgett <cpadgett@hilcorp.com>; Lee Murphy <lmurphy@hilcorp.com>; Rustin Mikeska <rmikeska@hilcorp.com>; Medrano, Eileen, EMNRD <Eileen.Medrano@emnrd.nm.gov>
Subject: RE: [EXTERNAL] P&A Revision for Hilcorp's HARTMAN 23 1 (API # 3004509298)

CAUTION: External sender. DO NOT open links or attachments from UNKNOWN senders.

John

NMOCD approves below except plug #4 pressure test – need to wait until cement sets to pressure test.

Thank you

Monica Kuehling
Compliance Officer Supervisor
Deputy Oil and Gas Inspector
New Mexico Oil Conservation Division
North District
Office Phone: 505-334-6178 ext. 123
Cell Phone: 505-320-0243
Email - monica.kuehling@emnrd.nm.gov

From: John LaMond <jlamond@hilcorp.com>
Sent: Thursday, April 4, 2024 2:31 PM
To: Kuehling, Monica, EMNRD <monica.kuehling@emnrd.nm.gov>; Rennick, Kenneth G <krennick@blm.gov>; Kade, Matthew H <mkade@blm.gov>
Cc: Farmington Regulatory Techs <FarmingtonRegulatoryTechs@hilcorp.com>; Brice Clyde - (C) <Brice.Clyde@hilcorp.com>; Clay Padgett <cpadgett@hilcorp.com>; Lee Murphy <lmurphy@hilcorp.com>; Rustin Mikeska <rmikeska@hilcorp.com>; Medrano, Eileen, EMNRD <Eileen.Medrano@emnrd.nm.gov>; John LaMond <jlamond@hilcorp.com>
Subject: RE: [EXTERNAL] P&A Revision for Hilcorp's HARTMAN 23 1 (API # 3004509298)

Monica,

Regarding the remainder of the plugs for the Hartman 23 1, Hilcorp proposes the following adjustments to the approved NOI based on the CBL run 4/3/2024:

5. PLUG #2: 12sx of Class G Cement (15.8 PPG, 1.15 yield); GAL Top @ 5,847':
 1. CBL shows spotty cement from 5,052' to 6,090' & good cement from 6,090' to 6,250'.
 2. Pump a 12 sack balanced cement plug inside the 4-1/2" casing (est. TOC @ +/- 5,747' & est. BOC @ +/- 5,897').
6. PLUG #3: 52sx of Class G Cement (15.8 PPG, 1.15 yield); MCS Top @ 4,876':
 1. NO CHANGES FROM APPROVED NOI.
 2. Pump inside/outside plug per design
 3. WOC & Tag
 4. Once plug is pumped, pressure test 4.5" casing to 560 psi
1. PLUG #4 & PLUG #5:
 1. CBL shows good cement from 2,646' to 4,084'.
 2. If pressure test against PLUG #3 passes, proceed with separate PLUG #4 and PLUG #5 as written in the approved NOI without WOC in between.
 3. If pressure test against PLUG #3 fails, combine Plug #4 and Plug #5.
 1. 68sx of Class G Cement (15.8 PPG, 1.15 yield); MV Top @ 4,022' | CHC Top @ 3,310':
 2. Pump a 68 sack balanced cement plug inside the 4-1/2" casing (est. TOC @ +/- 3,210' & est. BOC @ +/- 4,072')
 3. WOC & Tag
 4. Once plug is pumped, pressure test 4.5" casing to 560 psi need to wait until cement sets to pressure test
2. PLUG #6: 20sx of Class G Cement (15.8 PPG, 1.15 yield); DV Tool #1 Top @ 2,398' | PC Top @ 2,291':
 1. CBL shows good cement from 2,022' to 2,400' & spotty cement from 2,400' to 2,546'.
 2. NO CHANGES FROM APPROVED NOI.
 3. Pump inside plug per design
1. PLUG #7: 52sx of Class G Cement (15.8 PPG, 1.15 yield); FRD Top @ 2,000':
 1. CBL shows spotty cement from 2,000' to 2,022' & good cement from 2,022' to 2,400'
 2. TIH & perforate squeeze holes @ +/- 1,990'. RIH w/ 4-1/2" CICR and set CICR @ +/- 1,940'. TIH w/ work string & sting into CICR. Establish injection.
 3. Pump 40sx of cement in the 4-1/2" casing X 7-7/8" open hole annulus (est. TOC @ +/- 1,790' & est. BOC @ +/- 1,990'). Pump an additional 4sx of cement beneath the 4-1/2" CICR (est. TOC @ +/- 1,940' & est. BOC @ +/- 1,990'). Sting out of retainer, pump an 8 sack balanced cement plug on top of the CICR. (est. TOC @ +/- 1,840' & est. BOC @ +/- 1,940'). WOC for 4 hrs, tag TOC w/ work string. *Note cement plug lengths and volumes account for excess.
2. PLUG #8 & PLUG #9 will be discussed in a further email (KRD, OJO, NAC, & Surface Plugs)

Please let me know if you have any questions.

Thanks,

John LaMond

Operations Engineer – Technical Services
Hilcorp Energy Company
1111 Travis
Houston, TX 77002
346-237-2210 (Office)
832-754-9692 (Cell)
jlamond@hilcorp.com

From: Kuehling, Monica, EMNRD <monica.kuehling@emnrd.nm.gov>
Sent: Thursday, April 4, 2024 10:42 AM
To: John LaMond <jlamond@hilcorp.com>; Rennick, Kenneth G <krennick@blm.gov>; Kade, Matthew H <mkade@blm.gov>
Cc: Farmington Regulatory Techs <FarmingtonRegulatoryTechs@hilcorp.com>; Brice Clyde - (C) <Brice.Clyde@hilcorp.com>; Clay Padgett <cpadgett@hilcorp.com>; Lee Murphy <lmurphy@hilcorp.com>; Rustin Mikeska <rmikeska@hilcorp.com>; Medrano, Eileen, EMNRD <Eileen.Medrano@emnrd.nm.gov>
Subject: RE: [EXTERNAL] P&A Revision for Hilcorp's HARTMAN 23 1 (API # 3004509298)

CAUTION: External sender. DO NOT open links or attachments from UNKNOWN senders.

NMOCD approves below

Thank you

Monica Kuehling
Compliance Officer Supervisor
Deputy Oil and Gas Inspector
New Mexico Oil Conservation Division
North District
Office Phone: 505-334-6178 ext. 123
Cell Phone: 505-320-0243
Email - monica.kuehling@emnrd.nm.gov

From: John LaMond <jlamond@hilcorp.com>
Sent: Thursday, April 4, 2024 9:41 AM
To: Rennick, Kenneth G <krennick@blm.gov>; Kuehling, Monica, EMNRD <monica.kuehling@emnrd.nm.gov>; Kade, Matthew H <mkade@blm.gov>
Cc: Farmington Regulatory Techs <FarmingtonRegulatoryTechs@hilcorp.com>; Brice Clyde - (C) <Brice.Clyde@hilcorp.com>; Clay Padgett <cpadgett@hilcorp.com>; Lee Murphy <lmurphy@hilcorp.com>; Rustin Mikeska <rmikeska@hilcorp.com>; John LaMond <jlamond@hilcorp.com>
Subject: RE: [EXTERNAL] P&A Revision for Hilcorp's HARTMAN 23 1 (API # 3004509298)

Monica,

The Graneros top is @ ~6,590'.

Thanks,

John LaMond

Operations Engineer – Technical Services
Hilcorp Energy Company
1111 Travis
Houston, TX 77002
346-237-2210 (Office)
832-754-9692 (Cell)
jlamond@hilcorp.com

From: Rennick, Kenneth G <krennick@blm.gov>
Sent: Thursday, April 4, 2024 10:24 AM
To: Kuehling, Monica, EMNRD <monica.kuehling@emnr.d.nm.gov>; John LaMond <jlamond@hilcorp.com>; Kade, Matthew H <mkade@blm.gov>
Cc: Farmington Regulatory Techs <FarmingtonRegulatoryTechs@hilcorp.com>; Brice Clyde - (C) <Brice.Clyde@hilcorp.com>; Clay Padgett <cpadgett@hilcorp.com>; Lee Murphy <lmurphy@hilcorp.com>; Rustin Mikeska <rmikeska@hilcorp.com>
Subject: Re: [EXTERNAL] P&A Revision for Hilcorp's HARTMAN 23 1 (API # 3004509298)

CAUTION: External sender. DO NOT open links or attachments from UNKNOWN senders.

This is actually a non federal well. The BLM has no authority, rescinding our previous message.

Kenneth (Kenny) Rennick

Petroleum Engineer

Bureau of Land Management
Farmington Field Office
6251 College Blvd
Farmington, NM 87402

Email: krennick@blm.gov
Mobile & Text: 505.497.0019

From: Kuehling, Monica, EMNRD <monica.kuehling@emnr.d.nm.gov>
Sent: Thursday, April 4, 2024 9:20 AM
To: John LaMond <jlamond@hilcorp.com>; Rennick, Kenneth G <krennick@blm.gov>; Kade, Matthew H <mkade@blm.gov>
Cc: Farmington Regulatory Techs <FarmingtonRegulatoryTechs@hilcorp.com>; Brice Clyde - (C) <Brice.Clyde@hilcorp.com>; Clay Padgett <cpadgett@hilcorp.com>; Lee Murphy

<lmurphy@hilcorp.com>; Rustin Mikeska <rmikeska@hilcorp.com>

Subject: RE: [EXTERNAL] P&A Revision for Hilcorp's HARTMAN 23 1 (API # 3004509298)

John

What is the top of the Greneros

Monica

From: John LaMond <jlamond@hilcorp.com>

Sent: Thursday, April 4, 2024 9:06 AM

To: Rennick, Kenneth G <krennick@blm.gov>; Kuehling, Monica, EMNRD <monica.kuehling@emnrd.nm.gov>; Kade, Matthew H <mkade@blm.gov>

Cc: Farmington Regulatory Techs <FarmingtonRegulatoryTechs@hilcorp.com>; Brice Clyde - (C) <Brice.Clyde@hilcorp.com>; Clay Padgett <cpadgett@hilcorp.com>; Lee Murphy <lmurphy@hilcorp.com>; Rustin Mikeska <rmikeska@hilcorp.com>; John LaMond <jlamond@hilcorp.com>

Subject: RE: [EXTERNAL] P&A Revision for Hilcorp's HARTMAN 23 1 (API # 3004509298)

Good morning Monica and Kenny,

Attached is the CBL run yesterday (4/3/2024) that was run from 6,650' to surface. I have also attached the approved NOI.

Additionally, Bradenhead Pressure on the well this morning (4/4/2024) was 6 psi. Production casing pressure was 8 psi.

This email is regarding changes to PLUG #1, a subsequent email will be sent regarding the remaining plugs.

Hilcorp received verbal approval from both the BLM and NMOCD to perform the following adjustments to PLUG #1 from the approved NOI:

1. Perforate squeeze perfs @ 6,645' (~5' above 4-1/2" CICR set @ 6,650')
 1. **If the well goes on a vacuum after perforating:**
 1. Set a 4-1/2" CICR @ 6,595'.
 2. Pump PLUG #1: 52sx of Class G Cement (15.8 PPG, 1.15 yield); DK Perfs @ 6,710':
 1. Pump 40sx of cement in the 4-1/2" casing X 7-7/8" open hole annulus (est. TOC @ +/- 6,445' & est. BOC @ +/- 6,645').
 2. Pump an additional 4sx of cement beneath the 4-1/2" CICR (est. TOC @ +/- 6,595' & est. BOC @ +/- 6,645').
 3. Sting out of retainer, pump an 8 sack balanced cement plug on top of the CICR. (est. TOC @ +/- 6,495' & est. BOC @ +/- 6,595').
 2. **If the well DOES NOT go on a vacuum after perforating:**
 1. Pump PLUG #1: 55sx of Class G Cement (15.8 PPG, 1.15 yield); DK Perfs @ 6,710':
 1. Pump a 55 sack balanced cement plug inside the 4-1/2" casing (est. TOC @ +/- 5,950' & est. BOC @ +/- 6,645').
 1. Displace/Squeeze 40/55 sacks in the 4-1/2" casing X 7-7/8" open hole annulus (est. TOC @ +/- 6,445' & est. BOC @ +/- 6,645').

2. 15/55 sacks remaining inside the 4-1/2" casing (est. TOC @ +/- 6,455' & est. BOC @ +/- 6,645').

Please let me know if you have any questions or concerns with this plan.

A follow up email will be sent pertaining to the remaining plugging operations.

Thanks,

John LaMond

Operations Engineer – Technical Services
Hilcorp Energy Company
1111 Travis
Houston, TX 77002
346-237-2210 (Office)
832-754-9692 (Cell)
jlamond@hilcorp.com

From: Rennick, Kenneth G <krennick@blm.gov>
Sent: Wednesday, April 3, 2024 8:03 AM
To: Kuehling, Monica, EMNRD <monica.kuehling@emnrd.nm.gov>; John LaMond <jlamond@hilcorp.com>; Kade, Matthew H <mkade@blm.gov>
Cc: Farmington Regulatory Techs <FarmingtonRegulatoryTechs@hilcorp.com>; Brice Clyde - (C) <Brice.Clyde@hilcorp.com>; Clay Padgett <cpadgett@hilcorp.com>; Lee Murphy <lmurphy@hilcorp.com>; Rustin Mikeska <rmikeska@hilcorp.com>
Subject: Re: [EXTERNAL] P&A Revision for Hilcorp's HARTMAN 23 1 (API # 3004509298)

CAUTION: External sender. DO NOT open links or attachments from UNKNOWN senders.

The BLM finds the proposal appropriate.

Get [Outlook for iOS](#)

From: Kuehling, Monica, EMNRD <monica.kuehling@emnrd.nm.gov>
Sent: Wednesday, April 3, 2024 6:54:28 AM
To: John LaMond <jlamond@hilcorp.com>; Rennick, Kenneth G <krennick@blm.gov>; Kade, Matthew H <mkade@blm.gov>
Cc: Farmington Regulatory Techs <FarmingtonRegulatoryTechs@hilcorp.com>; Brice Clyde - (C) <Brice.Clyde@hilcorp.com>; Clay Padgett <cpadgett@hilcorp.com>; Lee Murphy <lmurphy@hilcorp.com>; Rustin Mikeska <rmikeska@hilcorp.com>
Subject: RE: [EXTERNAL] P&A Revision for Hilcorp's HARTMAN 23 1 (API # 3004509298)

NMOCD approves below with prior approval from the BLM

Thank you

Monica Kuehling
Compliance Officer Supervisor
Deputy Oil and Gas Inspector

New Mexico Oil Conservation Division
North District
Office Phone: 505-334-6178 ext. 123
Cell Phone: 505-320-0243
Email - monica.kuehling@emnrd.nm.gov

From: John LaMond <jlamond@hilcorp.com>
Sent: Tuesday, April 2, 2024 4:56 PM
To: Kuehling, Monica, EMNRD <monica.kuehling@emnrd.nm.gov>; Rennick, Kenneth G <krennick@blm.gov>; Kade, Matthew H <mkade@blm.gov>
Cc: Farmington Regulatory Techs <FarmingtonRegulatoryTechs@hilcorp.com>; Brice Clyde - (C) <Brice.Clyde@hilcorp.com>; Clay Padgett <cpadgett@hilcorp.com>; Lee Murphy <lmurphy@hilcorp.com>; Rustin Mikeska <rmikeska@hilcorp.com>; John LaMond <jlamond@hilcorp.com>
Subject: [EXTERNAL] P&A Revision for Hilcorp's HARTMAN 23 1 (API # 3004509298)

CAUTION: This email originated outside of our organization. Exercise caution prior to clicking on links or opening attachments.

Good evening Kenny & Monica,

Hilcorp is planning to move to the HARTMAN 23 1 (API # 3004509298) tomorrow (4/3/2024) for P&A.

Hilcorp received verbal approval from the NMOCD for the following adjustments to the approved NOI (attached):

1. Hilcorp plans to set a **4-1/2" CICR** at 6,650' instead of a 4-1/2" CIBP.
2. Hilcorp will proceed with the remainder of the approved NOI.

Kenny, does the BLM approve this?

Please let me know if there are any questions or concerns.

Thanks,

John LaMond

Operations Engineer – Technical Services
Hilcorp Energy Company
1111 Travis
Houston, TX 77002
346-237-2210 (Office)
832-754-9692 (Cell)
jlamond@hilcorp.com

The information contained in this email message is confidential and may be legally privileged and is intended only for the use of the individual or entity named above. If you are not an intended recipient or if you have received this message in error, you are hereby notified that any dissemination, distribution, or copy of this email is strictly prohibited. If you have received this email in error, please immediately notify us by return email or telephone if the sender's phone number is listed above, then promptly and permanently delete this message.

District I
1625 N. French Dr., Hobbs, NM 88240
Phone:(575) 393-6161 Fax:(575) 393-0720
District II
811 S. First St., Artesia, NM 88210
Phone:(575) 748-1283 Fax:(575) 748-9720
District III
1000 Rio Brazos Rd., Aztec, NM 87410
Phone:(505) 334-6178 Fax:(505) 334-6170
District IV
1220 S. St Francis Dr., Santa Fe, NM 87505
Phone:(505) 476-3470 Fax:(505) 476-3462

State of New Mexico
Energy, Minerals and Natural Resources
Oil Conservation Division
1220 S. St Francis Dr.
Santa Fe, NM 87505

CONDITIONS

Action 335206

CONDITIONS

Operator: HILCORP ENERGY COMPANY 1111 Travis Street Houston, TX 77002	OGRID: 372171
	Action Number: 335206
	Action Type: [C-103] Sub. Plugging (C-103P)

CONDITIONS

Created By	Condition	Condition Date
mkuehling	well plugged 4/17/2024	4/25/2024