

Submit 1 Copy To Appropriate District
Office
District I – (575) 393-6161
1625 N. French Dr., Hobbs, NM 88240
District II – (575) 748-1283
811 S. First St., Artesia, NM 88210
District III – (505) 334-6178
1000 Rio Brazos Rd., Aztec, NM 87410
District IV – (505) 476-3460
1220 S. St. Francis Dr., Santa Fe, NM
87505

State of New Mexico
Energy, Minerals and Natural Resources

Form C-103

Revised July 18, 2013

OIL CONSERVATION DIVISION
1220 South St. Francis Dr.
Santa Fe, NM 87505

WELL API NO.
30-005-60093
5. Indicate Type of Lease
STATE ☐ FEE ☒ Fed Surface
6. State Oil & Gas Lease No.
308697

SUNDRY NOTICES AND REPORTS ON WELLS
(DO NOT USE THIS FORM FOR PROPOSALS TO DRILL OR TO DEEPEN OR PLUG BACK TO A
DIFFERENT RESERVOIR. USE "APPLICATION FOR PERMIT" (FORM C-101) FOR SUCH
PROPOSALS.)

1. Type of Well: Oil Well ☒ Gas Well ☐ Other ☐ Injection Well

2. Name of Operator

State of New Mexico formerly Canyon E&P Company

3. Address of Operator

1625 N. French Drive, Hobbs, N 88240

4. Well Location

Unit Letter I : 1980 feet from the S line and 660 feet from the E line
Section 1 Township 15S Range 29E NMPM Chaves County

11. Elevation (Show whether DR, RKB, RT, GR, etc.)
GR 3874'

7. Lease Name or Unit Agreement Name

Double L Queen Unit

8. Well Number. 2X

9. OGRID Number

269864

10. Pool name or Wildcat

Double L Queen

12. Check Appropriate Box to Indicate Nature of Notice, Report or Other Data

NOTICE OF INTENTION TO:

PERFORM REMEDIAL WORK ☐ PLUG AND ABANDON ☐

TEMPORARILY ABANDON ☐ CHANGE PLANS ☐

PULL OR ALTER CASING ☐ MULTIPLE COMPL ☐

DOWNHOLE COMMINGLE

CLOSED-LOOP SYSTEM ☐

OTHER: ☐

SUBSEQUENT REPORT OF:

REMEDIAL WORK ☐ ALTERING CASING ☐

COMMENCE DRILLING OPNS. ☐ P AND A ☒

CASING/CEMENT JOB ☐

OTHER: ☐

13. Describe proposed or completed operations. (Clearly state all pertinent details, and give pertinent dates, including estimated date of starting any proposed work). SEE RULE 19.15.7.14 NMAC. For Multiple Completions: Attach wellbore diagram of proposed completion or recompletion.

A-Plus P&A LLC plugged and abandoned Double L Queen 2X 12/12/23. See attached as plugged report and WBD.

I hereby certify that the information above is true and complete to the best of my knowledge and belief.

SIGNATURE Nell Lindmeyer TITLE RA Engineer DATE 4/30/24

Type or print name Nell Lindmeyer E-mail address: nelle.apluswell.com PHONE: 5054866988

For State Use Only

APPROVED BY: _____ TITLE _____ DATE _____

Conditions of Approval (if any):

P&A End of Well Report

Double L Queen #002X

API # 30-05-60093

Unit I, 1980 FSL, 660 FEL, Sec 1, T15S, R29E

Chaves County, NM

12/5/2023:

Prep Location.

Daily rig and brake inspection. Install lock out tag out as appropriate, Spot in rig equipment.

Rig up well service unit, Inspect and flag dogs and derrick.

Change over tools to rod equipment.

Rig up rod stripper and work floor, Install all handrails.

PU on rods; stuck, WOO

TOH and LD rods

Secured well equipment. SDFD

Travel from location to yard

12/6/2023

Travel to location

Review JSA. Hold safety meeting. Topic: muster points and weather conditions

Remove wellhead connection.

PU tubing; stuck worked tubing parted.

Call for fisherman/ wait for Yellowjacket.

Nipple up BOP and test

Rig up work floor. Install all handrails. Rig up tubing tongs.

RU and spot fisherman TIH with OS latch on to tubing

TOOH LD prod tubing 45 joints dragging.

Secured well equipment. SDFD

Travel to shop

12/7/2023

Load supplies and equipment, travel to location

Review JSA. Hold safety meeting. Topic: hazard material

TOOH with production tubing

RU Aplus wireline RIH with JBGR

RIH and set CIBP @ 1886. RD wireline

RU pump and load well

RU JSI Wireline and log well from 1886 to surface RD wireline

TIH

RU pump to tubing and circulated

Plug #1 Spot 25 sxs cement from 1886 to ppg, 1, 32 yield, with CAL.

PU to 1545 LD 10 joints

Plug #2 Spot 25 sxs cement from 1545 to ppg, yield, with CAL. inside casing

TOOH WOC overnight

Secured well equipment. SDFD

Travel from location to yard

12/8/2023

Travel to location

Review JSA. Hold safety meeting. Topic: suspended loads

TIH TAG plug 2 @1300'

Spoke with: Donald @ NMOCD and approved to perf @1135' and pump 35 sxs total

RU A-plus WL

RIH PERF @1135

TIH with packer

RU pump to tubing establish injection rate circulate well

Plug #3 spot 36 sxs cement from 1135 to ppg. 1.32 yield with CAL. TOH and WOC. TIH and tag @ 850'. TOH. RU A-Plus WL. RIH and perforate @ 461'. TIH with packer.

Plug #4 spot 120 sxs Class C cement from 461' to surface; circulate good cement out casing and annulus.

TOOH Riggged down tubing tongs, remove handrails, rigged down work floor. Nipple down BOP

Secured well equipment. SDFD

Travel to yard

12/11/2023

Travel to location

Review JS. Hold safety meeting. Topic; pinch points

Rigged down well service unit

Top off well 5 sxs

Rigged down plugging equipment to MOL

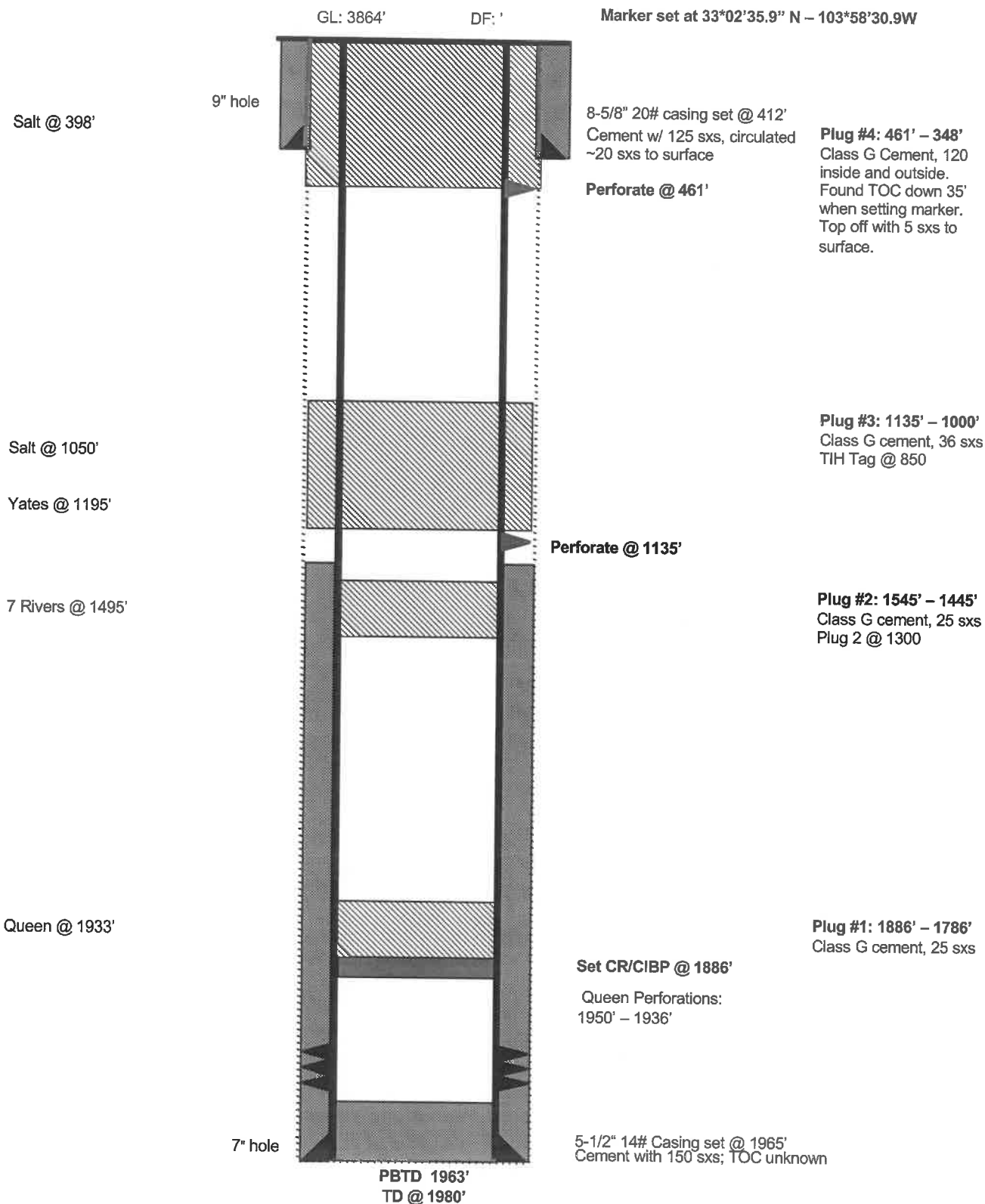
Travel to shop

12/12/2023

Travel

Dig out WH, Cut & remove WH. Find TOC @ surface in annulus. Found cement @35' inside casing.

Top off 5 sxs class C cement weld & install DHM 33*02'35.9" N-103*58'30.9W. NO PRESSURE ON WELL

Double L Queen Unit 002X**As Plugged 12/12/2023****Double L Queen****Unit I, 1980' FSL & 660' FEL, Section 1, T15S, R29E
Chaves County, NM, API #30-005-60093**

District I
1625 N. French Dr., Hobbs, NM 88240
Phone:(575) 393-6161 Fax:(575) 393-0720
District II
811 S. First St., Artesia, NM 88210
Phone:(575) 748-1283 Fax:(575) 748-9720
District III
1000 Rio Brazos Rd., Aztec, NM 87410
Phone:(505) 334-6178 Fax:(505) 334-6170
District IV
1220 S. St Francis Dr., Santa Fe, NM 87505
Phone:(505) 476-3470 Fax:(505) 476-3462

State of New Mexico
Energy, Minerals and Natural Resources
Oil Conservation Division
1220 S. St Francis Dr.
Santa Fe, NM 87505

CONDITIONS

Action 339679

CONDITIONS

Operator: A-PLUS WELL SERVICE, INC. P.O. Box 1979 Farmington, NM 87499	OGRID: 370317
	Action Number: 339679
	Action Type: [C-103] Sub. Plugging (C-103P)

CONDITIONS

Created By	Condition	Condition Date
loren.diede	CBL log has not been submitted to NMOCD	5/6/2024