

U.S. Department of the Interior
BUREAU OF LAND MANAGEMENT

Well Name: SAN JUAN 28-7 UNIT

Well Location: T27N / R7W / SEC 29 /
SESW / 36.539291 / -107.601532

County or Parish/State: RIO
ARRIBA / NM

Well Number: 15

Type of Well: CONVENTIONAL GAS
WELL

Allottee or Tribe Name:

Lease Number: NMNM03560

Unit or CA Name: SAN JUAN 28-7
UNIT--PC

Unit or CA Number:
NMNM78413B

US Well Number: 3003906879

Operator: HILCORP ENERGY
COMPANY

Subsequent Report

Sundry ID: 2788000

Type of Submission: Subsequent Report

Type of Action: Plug and Abandonment

Date Sundry Submitted: 05/02/2024

Time Sundry Submitted: 05:51

Date Operation Actually Began: 04/26/2024

Actual Procedure: Hilcorp Energy has plugged and abandoned the subject well on 5/1/2024 per the attached daily reports.

SR Attachments

Actual Procedure

SJ_28_7_UNIT_15_P_A_SR_BLM_Submitted_20240502055044.pdf

Well Name: SAN JUAN 28-7 UNIT

Well Location: T27N / R7W / SEC 29 /
SESW / 36.539291 / -107.601532County or Parish/State: RIO
ARRIBA / NM

Well Number: 15

Type of Well: CONVENTIONAL GAS
WELL

Allottee or Tribe Name:

Lease Number: NMNM03560

Unit or CA Name: SAN JUAN 28-7
UNIT--PCUnit or CA Number:
NMNM78413B

US Well Number: 3003906879

Operator: HILCORP ENERGY
COMPANY**Operator**

I certify that the foregoing is true and correct. Title 18 U.S.C. Section 1001 and Title 43 U.S.C. Section 1212, make it a crime for any person knowingly and willfully to make to any department or agency of the United States any false, fictitious or fraudulent statements or representations as to any matter within its jurisdiction. Electronic submission of Sundry Notices through this system satisfies regulations requiring a

Operator Electronic Signature: PRISCILLA SHORTY

Signed on: MAY 02, 2024 05:51 AM

Name: HILCORP ENERGY COMPANY

Title: Regulatory Technician

Street Address: 382 ROAD 3100

City: AZTEC

State: NM

Phone: (505) 324-5188

Email address: PSHORTY@HILCORP.COM

Field

Representative Name:

Street Address:

City:

State:

Zip:

Phone:

Email address:

BLM Point of Contact

BLM POC Name: MATTHEW H KADE

BLM POC Title: Petroleum Engineer

BLM POC Phone: 5055647736

BLM POC Email Address: MKADE@BLM.GOV

Disposition: Accepted

Disposition Date: 05/02/2024

Signature: Matthew Kade

SAN JUAN 28-7 UNIT 15

30.039.06879

PLUG AND ABANDONMENT

4/26/2024 - CHECK PSI ON WELL SITP 0#, SICP 0#, BH 0#, BDW 0 MINS. HAD TO STRIP OVER BOP, DUE TO ODD WELL HEAD. ND WH, NU BOP, PRESSURE TEST & FUNCTION TEST BOP'S & RU RIG FLOOR. LD 134 JTS OF 1" PROD TBG. SOME OF THE JTS HAD TRAPPED PRESSURE DUE TO PLUGGED PRD TBG. SLOWED DOWN OPERATIONS TO BLEED DOWN PRESSURE BEFORE BREAKING CONNECTIONS. ONLY LD 130 JTS OF PROD TBG OUT OF 134 JTS. STILL HAVE 4 JTS OF FISH DOWN HOLE. ESTIMATED AMOUNT OF 120'. SDFN.

4/27/2024 - CHECK PSI ON WELL SITP 0#, SICP 0#, BH 0#, BDW 0 MINS. MU 5.5" BIT & SCRAPER. PU 90 JTS OF 2.375" TBG. TALLEY, STRAP & RABBIT TBG TO 2,830'. MAKE SURE WE DO NOT TAG FISH AROUND CICR SET DEPTH @ 2,805'. NO TAG. TOO. **HEC ENGINEER SENT KENNY RENNICK, BLM, AND MONICA KUEHLING, NMOCD, AN EMAIL DOCUMENTING NMOCD'S VERBAL APPROVAL TO LEAVE FISH IN HOLE AND MOVE FORWARD WITH SETTING THE CICR @ 2805'. IF THE PRESSURE TEST FAILS, HEC WILL MOVE FORWARD WITH P&A. BLM GAVE APPROVALS.** LD BIT & SCRAPER. MU 5.5" CICR. TIH TO 2,805' & SET CICR @ 2,805. LW. TRIED TO PT 5.5" CASING TO 560 PSI BUT GETTING AN INJECTION RATE OF 240 PSI @ 1.3 BBLS/MIN. (SINCE NOT GETTING A PRESSURE TEST FOR T&A. OPERATIONS WILL CHANGE TO P&A). TOO. RU WIRELINE, RUN CBL FROM 2,805' TO SURFACE. POOH R/D WIRELINE. SDWE.

4/28/2024 – HEC ENGINEER SENT KENNY RENNICK, BLM, AND MONICA KUEHLING, NMOCD, AN EMAIL NOTIFYING THEM OF THE FAILED PRESSURE TEST. THE CBL WAS SENT WITH TOC @ ~1646'. HEC WILL MOVE FORWARD WITH THE P&A. AN UPDATED NOI PROCEDURE WAS SENT TO SHOW A COMBINED PLUG FOR THE PC, FRD, KRD, & OJO. APPROVALS WERE GIVEN.

4/30/2024 - CHECK PSI ON WELL SITP 0#, SICP 0#, BH 0#, BDW 0 MINS. TIH TO 2,805'. LW. STING INTO CICR. INJECTING RATE UNDER CICR 900 PSI @ 1.3 BBLS/MIN. **PUMP CEMENT PLUG #1 (PC, FRD, KRD & OJO TOPS) 121 SXS 24.7 BBLS, 1.15, 15.8#, 5 GAL/SX BOC @ 2,805'.** LD 27 JTS. 102 SX ON TOP OF CICR & 19 SX UNDER CICR. TOO. LD SETTING TOOL. WOC. MU TAG SUB, TIH & **TAG PLUG #1 @ 1,930'.** TOO. RU WIRELINE, RIH & PERF SQUEEZES HOLES @ 975'. POOH & RD WIRELINE. LW. INJECTION RATE @ 1.5 BBLS/MIN, 150 PSI. MU 5.5" CICR. TIH TO 925'. SET CICR @ 925'. INJECTION RATE UNDER CICR @ 150 PSI & 1.5 BBLS/MIN. **PUMP CEMENT PLUG #2 (NAC TOP) 74 SXS 15.1 BBLS, 1.15, 15.8#, 5 GAL/SX. BOC @ 975'.** LD 9 JTS. R/O 10 BBLS. 24 SXS ON TOP OF CICR & 50 SXS UNDER CICR. TOO. WOC. TIH & **TAG PLUG #2 @ 819'.** LD 26 JTS. RU WIRELINE, RIH & PERF SQUEEZES HOLES @ 157'. POOH & RD WIRELINE. INJECTION RATE TO SURFACE OUT BH @ 2.4 BBLS/MIN, 50 PSI. PUMPED 15 BBLS TOTAL. **PUMP CEMENT PLUG #3 (SURFACE) 142 SXS, 29 BBLS, 1.15, 15.8#, 5 GAL/SX TOC @ 0', BOC @ 157'.** BLM REP DUSTIN PORCH ON LOCATION. SDFN.

5/1/2024 - CHECK PSI ON WELL SITP 0#, SICP 0#, BH 0#, BDW 0 MINS. RD RIG FLOOR, ND BOP & PREP TO CUT OFF WH. CUT OFF WH, (TOC IN 5.5" PROD 40' & 9-5/8" SURFACE 25') WELD ON P&A MARKER. FILL CASING AND CELLAR WITH 38 SXS OF CEMENT. **BLM REP DUSTIN PORCH ON LOCATION.** RD RR.

WELL WAS PLUGGED AND ABANDONED ON 5/1/2024.

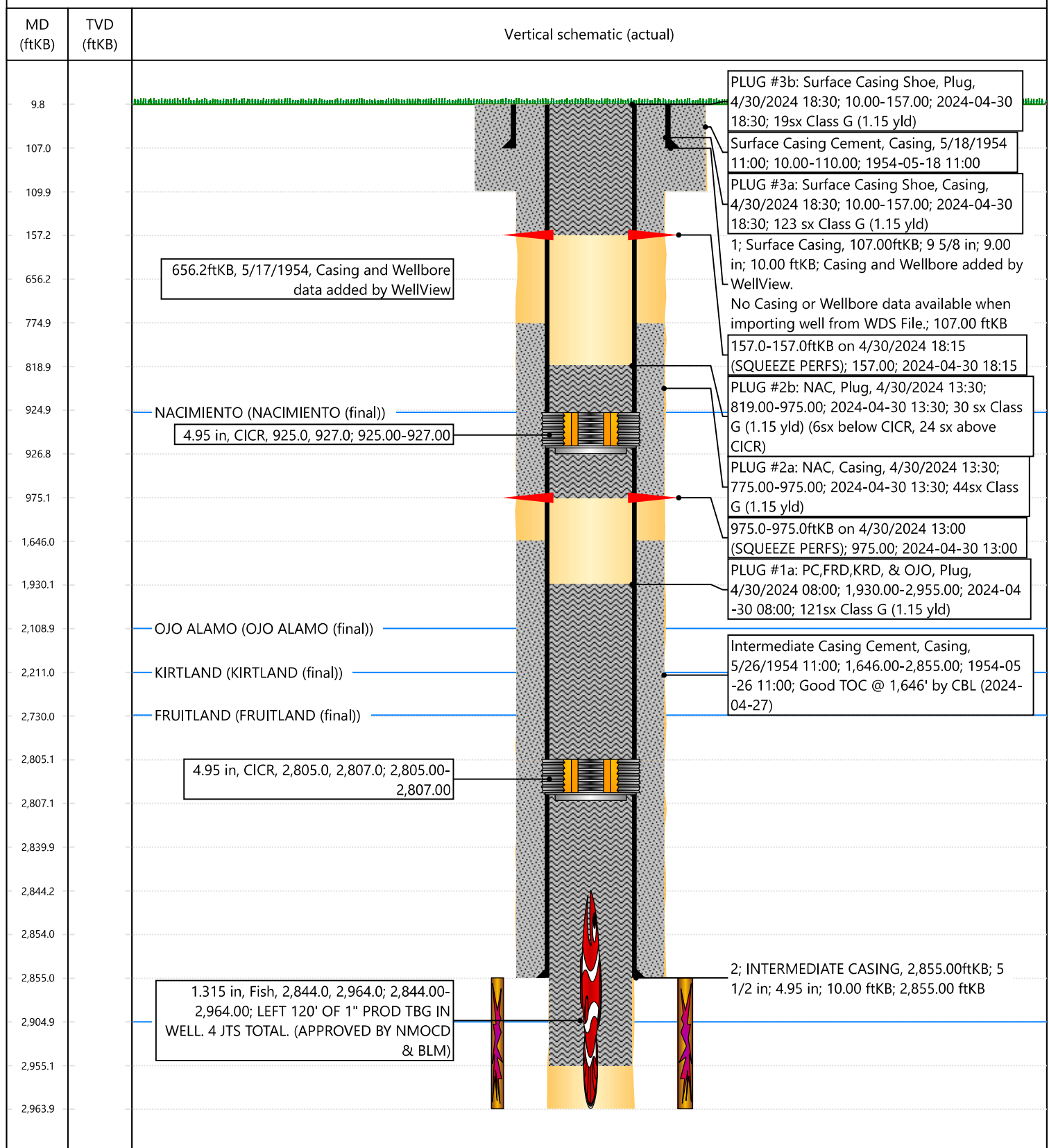


Current Schematic - Version 3

Well Name: SAN JUAN 28-7 UNIT 015

API / UWI 3003906879	Surface Legal Location 029-027N-007W-N	Field Name PC	Route 0906	State/Province NEW MEXICO	Well Configuration Type Vertical
Ground Elevation (ft) 6,665.00	Original KB/RT Elevation (ft) 6,675.00	Tubing Hanger Elevation (ft) 6,665.00	RKB to GL (ft) 10.00	KB-Casing Flange Distance (ft) 10.00	KB-Tubing Hanger Distance (ft) 10.00

Original Hole [Vertical]



Priscilla Shorty

From: Priscilla Shorty
Sent: Monday, April 29, 2024 8:58 AM
To: Rennick, Kenneth G; John LaMond; Kuehling, Monica, EMNRD; Kade, Matthew H
Cc: Farmington Regulatory Techs; Brice Clyde - (C); Clay Padgett; Lee Murphy; Rustin Mikeska; Ramon Hancock; Angela Martinez
Subject: RE: [EXTERNAL] TA Revision for Hilcorp's SAN JUAN 28-7 UNIT 15 (API # 3003906879)

Thank you Kenny.

Monica,
The NOI has been submitted in OCD Permitting, **ACTION ID 338385**.

Thank you,

Priscilla Shorty

Operations Regulatory Technician
Hilcorp Energy Company
505-324-5188
pshorty@hilcorp.com

From: Rennick, Kenneth G <krennick@blm.gov>
Sent: Monday, April 29, 2024 8:45 AM
To: Priscilla Shorty <pshorty@hilcorp.com>; John LaMond <jlamond@hilcorp.com>; Kuehling, Monica, EMNRD <monica.kuehling@emnrd.nm.gov>; Kade, Matthew H <mkade@blm.gov>
Cc: Farmington Regulatory Techs <FarmingtonRegulatoryTechs@hilcorp.com>; Brice Clyde - (C) <Brice.Clyde@hilcorp.com>; Clay Padgett <cpadgett@hilcorp.com>; Lee Murphy <lmurphy@hilcorp.com>; Rustin Mikeska <rmikeska@hilcorp.com>; Ramon Hancock <Ramon.Hancock@hilcorp.com>; Angela Martinez <Angela.Martinez@hilcorp.com>
Subject: Re: [EXTERNAL] TA Revision for Hilcorp's SAN JUAN 28-7 UNIT 15 (API # 3003906879)

CAUTION: External sender. DO NOT open links or attachments from UNKNOWN senders.

The NOI has been approved.

Kenneth (Kenny) Rennick
Petroleum Engineer
Bureau of Land Management
Farmington Field Office
6251 College Blvd
Farmington, NM 87402

Email: krennick@blm.gov
Mobile & Text: 505.497.0019

From: Priscilla Shorty <pshorty@hilcorp.com>
Sent: Monday, April 29, 2024 5:53 AM
To: Rennick, Kenneth G <krennick@blm.gov>; John LaMond <jlamond@hilcorp.com>; Kuehling, Monica, EMNRD

<monica.kuehling@emnrd.nm.gov>; Kade, Matthew H <mkade@blm.gov>

Cc: Farmington Regulatory Techs <FarmingtonRegulatoryTechs@hilcorp.com>; Brice Clyde - (C)

<Brice.Clyde@hilcorp.com>; Clay Padgett <cpadgett@hilcorp.com>; Lee Murphy <lmurphy@hilcorp.com>; Rustin

Mikeska <rmikeska@hilcorp.com>; Ramon Hancock <Ramon.Hancock@hilcorp.com>; Angela Martinez

<Angela.Martinez@hilcorp.com>; John LaMond <jamond@hilcorp.com>

Subject: RE: [EXTERNAL] TA Revision for Hilcorp's SAN JUAN 28-7 UNIT 15 (API # 3003906879)

Good morning ~

The NOI P&A has been submitted in BLM AFMSS, **SUNDRY ID 2787282**.

After BLM approval, it will be submitted in OCD Permitting and Action ID will be sent.

Thanks,

Priscilla Shorty

Operations Regulatory Technician

Hilcorp Energy Company

505-324-5188

pshorty@hilcorp.com

From: Rennick, Kenneth G <krennick@blm.gov>

Sent: Sunday, April 28, 2024 3:38 PM

To: John LaMond <jamond@hilcorp.com>; Kuehling, Monica, EMNRD <monica.kuehling@emnrd.nm.gov>; Kade, Matthew H <mkade@blm.gov>

Cc: Farmington Regulatory Techs <FarmingtonRegulatoryTechs@hilcorp.com>; Brice Clyde - (C)

<Brice.Clyde@hilcorp.com>; Clay Padgett <cpadgett@hilcorp.com>; Lee Murphy <lmurphy@hilcorp.com>; Rustin

Mikeska <rmikeska@hilcorp.com>; Ramon Hancock <Ramon.Hancock@hilcorp.com>; Angela Martinez

<Angela.Martinez@hilcorp.com>; John LaMond <jamond@hilcorp.com>

Subject: Re: [EXTERNAL] TA Revision for Hilcorp's SAN JUAN 28-7 UNIT 15 (API # 3003906879)

CAUTION: External sender. DO NOT open links or attachments from UNKNOWN senders.

The BLM finds the procedure appropriate.

Changes may be asked to be done for the Nacimiento plug after additional review.

Get [Outlook for iOS](#)

From: John LaMond <jamond@hilcorp.com>

Sent: Sunday, April 28, 2024 3:23:53 PM

To: Kuehling, Monica, EMNRD <monica.kuehling@emnrd.nm.gov>; Rennick, Kenneth G <krennick@blm.gov>; Kade, Matthew H <mkade@blm.gov>

Cc: Farmington Regulatory Techs <FarmingtonRegulatoryTechs@hilcorp.com>; Brice Clyde - (C)

<Brice.Clyde@hilcorp.com>; Clay Padgett <cpadgett@hilcorp.com>; Lee Murphy <lmurphy@hilcorp.com>; Rustin

Mikeska <rmikeska@hilcorp.com>; Ramon Hancock <Ramon.Hancock@hilcorp.com>; Angela Martinez

<Angela.Martinez@hilcorp.com>; John LaMond <jamond@hilcorp.com>

Subject: RE: [EXTERNAL] TA Revision for Hilcorp's SAN JUAN 28-7 UNIT 15 (API # 3003906879)

Monica and Kenny,

Please find attached the updated NOI procedure. This will be the one that is submitted to the system. I also attached the CBL again for reference.

The change that was made was the decision to combine the PC, FRD, KRD, & OJO plugs as one single plug.

Please let me know if you have any questions or concerns.

Thanks,

John LaMond

Operations Engineer – Technical Services
Hilcorp Energy Company
1111 Travis
Houston, TX 77002
346-237-2210 (Office)
832-754-9692 (Cell)
jlamond@hilcorp.com

From: John LaMond <jlamond@hilcorp.com>
Sent: Sunday, April 28, 2024 12:33 PM
To: Kuehling, Monica, EMNRD <monica.kuehling@emnrd.nm.gov>; Rennick, Kenneth G <krennick@blm.gov>; Kade, Matthew H <mkade@blm.gov>
Cc: Farmington Regulatory Techs <FarmingtonRegulatoryTechs@hilcorp.com>; Brice Clyde - (C) <Brice.Clyde@hilcorp.com>; Clay Padgett <cpadgett@hilcorp.com>; Lee Murphy <lmurphy@hilcorp.com>; Rustin Mikeska <rmikeska@hilcorp.com>; John LaMond <jlamond@hilcorp.com>; Ramon Hancock <Ramon.Hancock@hilcorp.com>; Angela Martinez <Angela.Martinez@hilcorp.com>
Subject: RE: [EXTERNAL] TA Revision for Hilcorp's SAN JUAN 28-7 UNIT 15 (API # 3003906879)

Good morning Monica and Kenny,

Attached is the CBL that was run yesterday (4/27/2024). The CBL shows TOC @ ~1,646'. Additionally, a pressure test was performed to 560 psi which failed.

Based on the results of the CBL and the failed pressure test, Hilcorp requests to move forward with plugging and abandonment of the SAN JUAN 28-7 UNIT 15.

I have attached an updated P&A procedure as well as an updated proposed P&A wellbore schematic. As requested, this NOI procedure will be formally submitted through the system for review and approvals. The rig will be shut down on Monday (4/29/2024), and Hilcorp plans to proceed with P&A operations Tuesday morning (4/30/2024).



HILCORP ENERGY COMPANY
SAN JUAN 28-7 UNIT 15
P&A NOI

API #: 3003906879

JOB PROCEDURES

1. Contact NMOCD and BLM (where applicable) 24 hours prior to MIRU.
 2. Hold pre-job safety meeting. Verify cathodic is off. Comply with all NMOCD, BLM, and HEC safety and environmental regulations.
 3. MIRU service rig and associated equipment; NU and test BOP.
 4. *Note the following plugs are based on the **CBL run 4/27/2024**:
 5. PU & TIH w/ work string and sting into **5-1/2" CICR @ +/- 2,805'**.
 6. **PLUG #1: 39sx of Class G Cement (15.8 PPG, 1.15 yield); PC Top @ 2,905' | FRD Top @ 2,730'**:
 Pump 18sx of cement beneath the 5-1/2" CICR inside both the 5-1/2" casing (est. **TOC @ +/- 2,805'** & est. **BOC @ +/- 2,855'**) and into the 5" open hole (est. **TOC @ +/- 2,855'** & est. **BOC @ +/- 2,955'**). Sting out of the retainer, continue pumping a 21 sack balanced cement plug on top of the CICR. (est. **TOC @ +/- 2,955'** & est. **BOC @ +/- 2,805'**). Wait on Cement for 4 hours, tag TOC w/ work string. *Note cement plug lengths & volumes account for excess.
 7. POOH w/ work string to **+/- 2,261'**.
 8. **PLUG #2: 27sx of Class G Cement (15.8 PPG, 1.15 yield); KRD Top @ 2,211' | OJO Top @ 2,130'**:
 Pump an 27 sack balanced cement plug inside the 5-1/2" casing (est. **TOC @ +/- 2,030'** & est. **BOC @ +/- 2,261'**) *Note cement plug lengths & volumes account for excess.
 9. TOOH w/ work string. TIH & perforate squeeze holes @ **+/- 975'**. RIH w/ **5-1/2"** CICR and set CICR @ **+/- 925'**. TIH w/ work string & sting into CICR. Establish circulation.
 10. **PLUG #3: 62sx of Class G Cement (15.8 PPG, 1.15 yield); NAC Top @ 925'**:
 Pump 44sx of cement in the 5-1/2" casing X 8-3/4" open hole annulus (est. **TOC @ +/- 775'** & est. **BOC @ +/- 975'**). Pump an additional 6sx of cement in the 5-1/2" CICR (est. **TOC @ +/- 925'** & est. **BOC @ +/- 975'**). Sting out of retainer, pump a 12 sack balanced cement plug on top of the CICR. (est. **TOC @ +/- 925'** & est. **BOC @ +/- 925'**). WOC for 4 hrs, tag TOC w/ work string. *Note cement plug lengths and volumes account for excess.
 11. TOOH w/ work string. TIH & perforate squeeze holes @ **+/- 157'**. Establish circulation.
 12. **PLUG #4: 60sx of Class G Cement (15.8 PPG, 1.15 yield); Surf. Casing Shoe @ 107'**:
 Pump 11sx of cement in the 5-1/2" casing X 8-3/4" open hole annulus (est. **TOC @ +/- 107'** & est. **BOC @ +/- 157'**). Continue pumping 30sx of cement in the 5-1/2" casing X 9-5/8" casing annulus (est. **TOC @ +/- 0'** & est. **BOC @ +/- 107'**). Pump an 19 sack balanced cement plug inside the 5-1/2" casing (est. **TOC @ +/- 107'** & est. **BOC @ +/- 157'**). WOC for 4 hrs, tag TOC w/ work string.
- ND BOP, cut off casing below casing flange. Top off cement in surface casing annulus, if needed. Install a P&A marker with cement to comply with regulations. Move off location, cut off anchors, and restore location.

Please let me know if you have any questions or concerns.

Thanks,

John LaMond

Operations Engineer – Technical Services

Hilcorp Energy Company

1111 Travis

Houston, TX 77002

346-237-2210 (Office)

832-754-9692 (Cell)

jlamond@hilcorp.com

From: Kuehling, Monica, EMNRD <monica.kuehling@emnrd.nm.gov>
Sent: Sunday, April 28, 2024 11:47 AM
To: Rennick, Kenneth G <krennick@blm.gov>; John LaMond <jlamond@hilcorp.com>; Kade, Matthew H <mkade@blm.gov>
Cc: Farmington Regulatory Techs <FarmingtonRegulatoryTechs@hilcorp.com>; Brice Clyde - (C) <Brice.Clyde@hilcorp.com>; Clay Padgett <cpadgett@hilcorp.com>; John LaMond <jlamond@hilcorp.com>; Lee Murphy <lmurphy@hilcorp.com>; Rustin Mikeska <rmikeska@hilcorp.com>
Subject: Re: [EXTERNAL] TA Revision for Hilcorp's SAN JUAN 28-7 UNIT 15 (API # 3003906879)

CAUTION: External sender. DO NOT open links or attachments from UNKNOWN senders.

Nmocd approves leaving fish in open hole - nmocd will wait for blm approval of noi for plugging and then will review
Please let me know action id once submitted through our system
I have not received a log for this well
Thank you
Monica kuehling
Nmocd

Get [Outlook for iOS](#)

From: Rennick, Kenneth G <krennick@blm.gov>
Sent: Saturday, April 27, 2024 9:51:08 AM
To: John LaMond <jlamond@hilcorp.com>; Kuehling, Monica, EMNRD <monica.kuehling@emnrd.nm.gov>; Kade, Matthew H <mkade@blm.gov>
Cc: Farmington Regulatory Techs <FarmingtonRegulatoryTechs@hilcorp.com>; Brice Clyde - (C) <Brice.Clyde@hilcorp.com>; Clay Padgett <cpadgett@hilcorp.com>; John LaMond <jlamond@hilcorp.com>; Lee Murphy <lmurphy@hilcorp.com>; Rustin Mikeska <rmikeska@hilcorp.com>
Subject: Re: [EXTERNAL] TA Revision for Hilcorp's SAN JUAN 28-7 UNIT 15 (API # 3003906879)

To confirm the BLM finds the procedure appropriate.

Get [Outlook for iOS](#)

From: John LaMond <jlamond@hilcorp.com>
Sent: Saturday, April 27, 2024 9:48:23 AM
To: Kuehling, Monica, EMNRD <monica.kuehling@emnrd.nm.gov>; Rennick, Kenneth G <krennick@blm.gov>; Kade, Matthew H <mkade@blm.gov>
Cc: Farmington Regulatory Techs <FarmingtonRegulatoryTechs@hilcorp.com>; Brice Clyde - (C) <Brice.Clyde@hilcorp.com>; Clay Padgett <cpadgett@hilcorp.com>; John LaMond <jlamond@hilcorp.com>; Lee Murphy <lmurphy@hilcorp.com>; Rustin Mikeska <rmikeska@hilcorp.com>
Subject: [EXTERNAL] TA Revision for Hilcorp's SAN JUAN 28-7 UNIT 15 (API # 3003906879)

This email has been received from outside of DOI - Use caution before clicking on links, opening attachments, or responding.

Good morning Monica and Kenny,

Hilcorp moved onto the **SAN JUAN 28-7 UNIT 15 (API # 3003906879)** yesterday to begin TA operations. I have attached the approved NOI for reference.

When we TOOH yesterday w/ the 1.315" tubing, we had found that it had parted with 120' of fish remaining in the hole. This morning we RIH w/ our work string/bit/scrapper to 2,830' and did NOT tag the fish. This indicates that it fell into the open hole section of the wellbore. Our NOI approved setting depth for the CICR is 2,805'.

Moving forward, Hilcorp requests to leave the fish in the hole, and move forward with setting the CICR @ 2,805'. We will also perform a preliminary pressure test today. If that pressure test fails, we will likely move forward with P&A operations (pending NMOCD and BLM approval at that time). If we get approval to P&A, we will attempt to sting back into the CICR and pump cement to 50' beneath the PC top (this will also cement the fish in the open hole).

Hilcorp received verbal approval from the NMOCD and are awaiting to hear back from the BLM with approval for this plan.

Please let me know if you have any questions or concerns with this plan.

Thanks,

John LaMond

Operations Engineer – Technical Services

Hilcorp Energy Company

1111 Travis

Houston, TX 77002

346-237-2210 (Office)

832-754-9692 (Cell)

jlamond@hilcorp.com

The information contained in this email message is confidential and may be legally privileged and is intended only for the use of the individual or entity named above. If you are not an intended recipient or if you have received this message in error, you are hereby notified that any dissemination, distribution, or copy of this email is strictly prohibited. If you have received this email in error, please immediately notify us by return email or telephone if the sender's phone number is listed above, then promptly and permanently delete this message.

While all reasonable care has been taken to avoid the transmission of viruses, it is the responsibility of the recipient to ensure that the onward transmission, opening, or use of this message and any attachments will not adversely affect its systems or data. No responsibility is accepted by the company in this regard and the recipient should carry out such virus and other checks as it considers appropriate.

District I
1625 N. French Dr., Hobbs, NM 88240
Phone:(575) 393-6161 Fax:(575) 393-0720
District II
811 S. First St., Artesia, NM 88210
Phone:(575) 748-1283 Fax:(575) 748-9720
District III
1000 Rio Brazos Rd., Aztec, NM 87410
Phone:(505) 334-6178 Fax:(505) 334-6170
District IV
1220 S. St Francis Dr., Santa Fe, NM 87505
Phone:(505) 476-3470 Fax:(505) 476-3462

State of New Mexico
Energy, Minerals and Natural Resources
Oil Conservation Division
1220 S. St Francis Dr.
Santa Fe, NM 87505

CONDITIONS

Action 340205

CONDITIONS

Operator: HILCORP ENERGY COMPANY 1111 Travis Street Houston, TX 77002	OGRID: 372171
	Action Number: 340205
	Action Type: [C-103] Sub. Plugging (C-103P)

CONDITIONS

Created By	Condition	Condition Date
mkuehling	well plugged 5/1/2024	5/15/2024