



Souder, Miller & Associates ♦ 201 S. Halagueno St. ♦ Carlsbad, NM 88220  
(575) 689-8801

May 8, 2024

Oil Conservation Division  
1000 Rio Brazos Road  
Aztec, NM 87410

SUBJECT: Reclamation Report for the Artesia Metex Unit #017, Eddy County, New Mexico

### 1.0 Introduction

On behalf of the New Mexico Energy, Minerals and Natural Resources Department, Oil Conservation Division (OCD), Souder, Miller and Associates (SMA) has prepared five separate Reclamation Reports that describe the reclamation of land related to oil and gas production activities at the Artesia Metex (AM) Units. The project area consists of five Unit Locations: AM #005, AM #006, AM #017, AM #018, and AM #019, all located on private land approximately 12 miles southeast of Artesia, within Eddy County, New Mexico. All five well locations have been plugged and abandoned, though residual equipment, piping, and debris remained on site.

This Reclamation Report details reclamation activities for AM Unit #017, located in Unit Letter N, Section 24, Township 18S, Range 27E, (32.72649, -104.23527) Eddy County, New Mexico. A summary of the site is detailed in Table 1.

Table 1. Summary of Artesia Metex Unit				
Site Name (Type of Well)	API	Surface Location Latitude, Longitude	Plug and Abandonment Date	Notes (Pre-Reclamation, per OCD)
Artesia Metex Unit #017 (Oil)	30-015-00947	Unit N, S24, T18S, R27E 32.72649, -104.23527	8/16/2018	Suspected former pit, no environmental orders, non-reportable operational staining, unvegetated area, cement washout area, electrical panel

### 2.0 Site Background and Information

Artesia Metex Unit #017 is located approximately 12 miles southeast of Artesia, NM on private land at an elevation of approximately 3,574 feet above mean sea level (amsl). This unit was plugged and abandoned on August 16, 2018.

### 3.0 Reclamation Activities

Initial site activities included marking the site for a New Mexico One Call (811) and an initial environmental site investigation. Marking for the 811 was conducted on January 1, 2024, with 811 activities commencing in the days

## Artesia Metex Unit #017 Reclamation Report

May 8, 2024

following. The initial overview of the site indicated that electrical equipment had been found on site, but upon further inspection, the equipment was not connected to power.

NORM Assessment

Following the initial inspection of the site, a Naturally Occurring Radioactive Material (NORM) assessment of the residual petroleum production infrastructure was performed on January 8, and January 9, 2024. This assessment was performed to determine if equipment and flowlines left after the cessation of production activities measured NORM readings greater than the disposal threshold of 50 microroentgens per hour (mR/hr) (20.3.14.1403 NMAC). The NORM assessment was performed using a Geiger counter with a scintillometer probe. All equipment of similar NORM reading and size, namely already cut cable wire, T-posts, or fencing wire, were marked, and labeled as one. Flowlines were marked, and labeled every 100 ft, as the NORM readings remained fairly stable. A total of 15 readings were performed and catalogued at AM Unit #017. None of the flowlines or equipment exceeded the disposal threshold. The highest exposure rate observed was 1,900 counts per minute (cpm), or 10.86 mR/hr.

All NORM values and equipment locations can be found in the field notes and photographic log in Appendix B. The Geiger counter calibration record is included in Appendix E.

Polyline Flushing, Scrap Removal, and Surface Scraping

SMA and J&H Services, Inc (J&H) met onsite on February 26, 2024, to begin initial reclamation activities, starting with a surface scrape of the operationally stained areas around the wellhead, and collection of scrap metal and debris within the area. They took all scrap metal to Sandpoint Landfill, a landfill maintained by Eddy County.

On February 28, 2024, the crew utilized a freshwater truck and vacuum truck to flush the polyline, estimated at 4,000 feet across all five sites. The freshwater truck was connected to the polyline at AM Unit #019 and used to flush the line to the vacuum truck located at AM Unit #005. Approximately 50 barrels (bbls) of freshwater were pumped into the flow line, and approximately 60 bbls of liquid were flushed out of the polyline, indicating there was approximately 10 bbls of petroleum product still in the line.

On February 29, 2024, J&H pulled the flushed polyline to AM Unit #018. AM Unit #018 was used as a consolidation location for all five of the Artesia Metex locations for polyline cutting and loading prior to removal and disposal. During flushing, cutting, and loading of the polyline, residual flush water leaked onto the pad and road areas of AM Unit #018. The subsequent soil was scraped with a backhoe and stockpiled with the non-reportable operational staining. On March 1, 2024, J&H completed cutting and loading of all the polyline for disposal at Sandpoint Landfill.

On February 29, 2024, approximately 31 cubic yards of non-reportable operationally stained soil at AM Unit #017 was scraped and temporarily stockpiled. On March 1, 2024, J&H began transferring all the scraped soil from AM Unit #017 to AM Unit #018 for stockpiling. On March 4, 2024, the stockpiled soil was transported to Lea Land LLC, an OCD surface waste facility, for disposal. Approximately 160 cubic yards of soil were disposed, which included scraped soil from the other four Units. The surface scraped areas were backfilled with clean, imported material and graded to match the surrounding topography.

Photos of the polyline flushing, scrap metal removal, and surface scraping are included in Appendix B. Copies of the soil waste manifests from Lea land LLC are included in Appendix D. Due to the unregulated nature of scrap metal and polyline disposal, Sandpoint Landfill did not provide waste manifests for the scrap metal or polylines.

## Artesia Metex Unit #017 Reclamation Report

May 8, 2024

Ripping and Seeding

Preparation for seeding of AM Unit #017 and the corresponding access roads was conducted on March 6 and March 7, 2024, and included ripping areas with little vegetation and tilling the soil in preparation for seeding. Seeding of AM Unit #017 and the corresponding access roads began on March 19, 2024. All seeded areas were mulched with straw blankets to promote seed growth by reducing evaporation, weed growth, and erosion. J&H laid straw blankets over the seeded ground on March 20, 2024. Application of the straw blankets to Unit #017 and access roads was completed on March 22, 2024. The area of reclamation corresponding to AM Unit #017 totals 37,954 square feet.

Photos of ripping, seeding, and the application of the straw blankets are included in Appendix B. The seed mix list can be found in Appendix C.

Aerial Photos Drone Sweep

Along with the NORM Assessment, on January 9, 2024, SMA performed a drone sweep of the area to get an aerial image prior to reclamation, as shown in Figure 1. Upon completion of reclamation activities, a second drone sweep was completed on April 3, 2024, to show the completion of reclamation activities. The drone photos provide updated aerial photographs that were used for Figure 2 for post-reclamation of the well pad and Figures 3 through 5 for post-reclamation of the access roads.

**4.0 Scope and Limitations**

Reclamation activities for AM Unit #017 began on January 1, 2024, and concluded on March 22, 2024. The scope of our services included: environmental assessment; regulatory liaison; reclamation guidance; and preparation of this report. All work has been performed in accordance with generally accepted professional environmental consulting practices for oil and gas reclamation in the Permian Basin in New Mexico.

This report concludes the reclamation activities at AM Unit #017 under the direction of OCD.

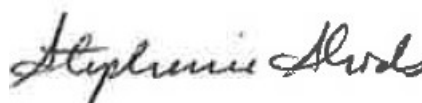
If there are any questions regarding this report, please contact Sarahmay Schlea at (330) 958-5689 or Stephanie Hinds at (505) 793-7079.

Submitted by:  
SOUDER, MILLER & ASSOCIATES



Sarahmay Schlea, GIT  
Staff Geoscientist

Reviewed by:



Stephanie Hinds, P.E.  
Senior Engineer

Artesia Metex Unit #017 Reclamation Report

May 8, 2024

**ATTACHMENTS:**

**Figures:**

Figure 1: Aerial Site Map Pre-Reclamation

Figure 2: Aerial Site Map Post-Reclamation

Figure 3: Aerial Access Roads Map Post-Reclamation

Figure 4: Aerial Access Roads Map Post-Reclamation

Figure 5: Aerial Access Roads Map Post-Reclamation

**Appendices:**

Appendix A: Correspondence

Appendix B: Field Notes and Photographic Log

Appendix C: Seed Mix List

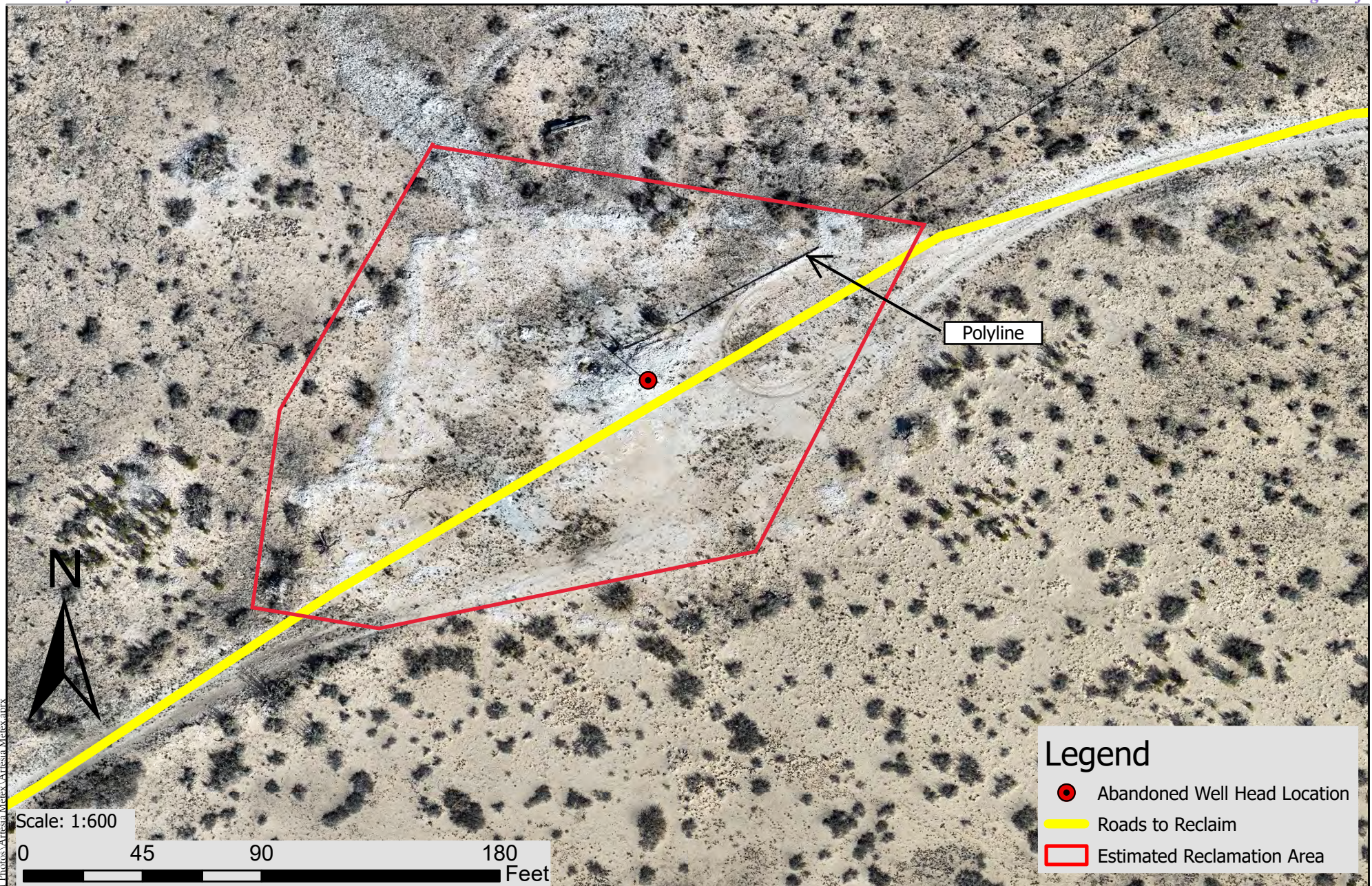
Appendix D: Waste Manifests, Disposal Records

Appendix E: Geiger Counter Calibration Record



# FIGURES





### Legend

- Abandoned Well Head Location
- Roads to Reclaim
- Estimated Reclamation Area



**SOUDER, MILLER & ASSOCIATES**  
201 S Halagueno St  
Carlsbad, NM 88220

(575) 689-7040

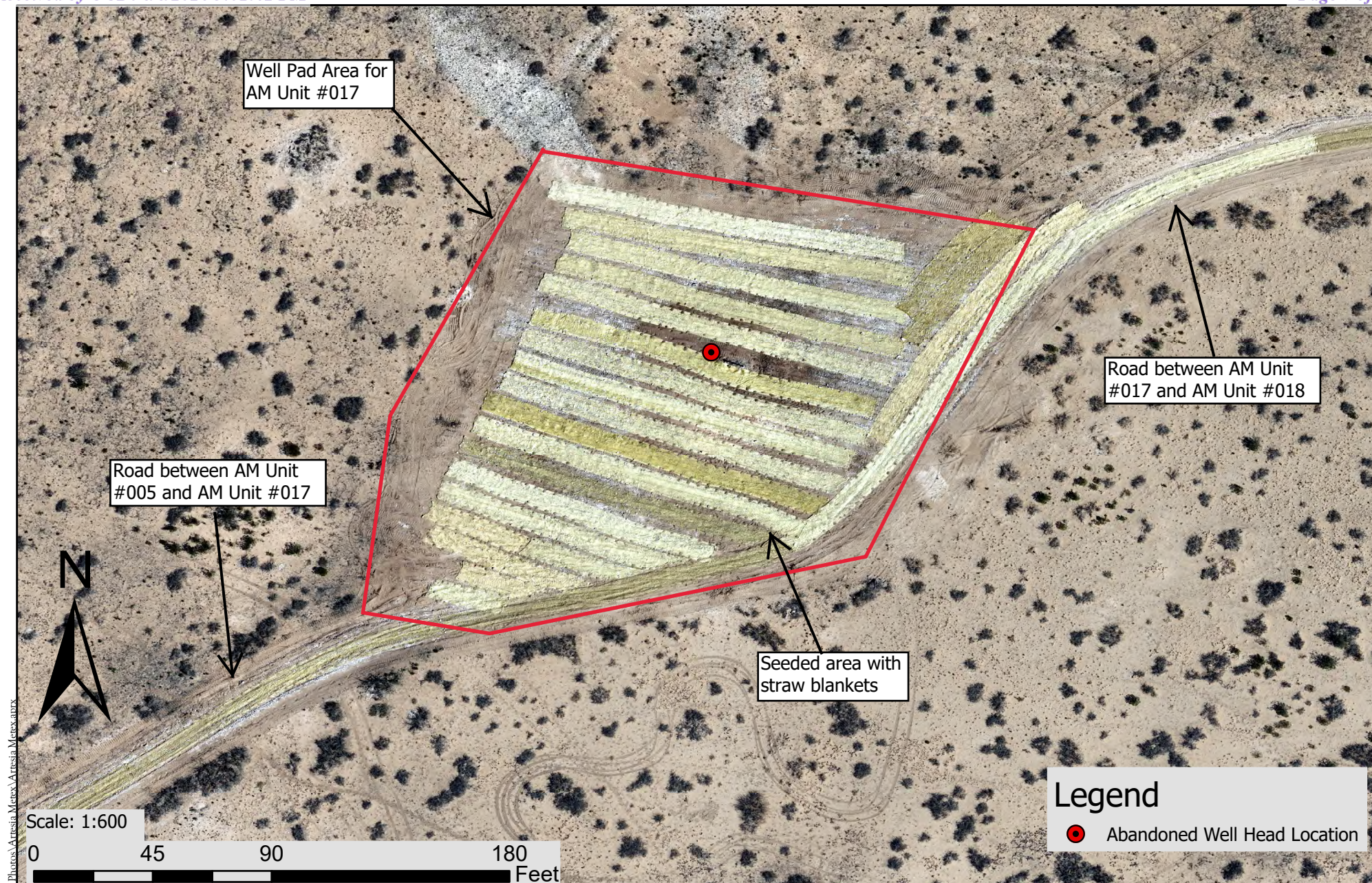
Serving the Southwest & Rocky Mountains  
[www.soudermiller.com](http://www.soudermiller.com)

**Site Map**  
Artesia Metex Unit #017  
Reclamation and Reseeding

Figure 1

Designed SKS	Drawn SKS	Checked SAH
Date: 4/19/2024		
Scale:		
Project No: 5E31796		
Sheet:		





**SOUDER, MILLER & ASSOCIATES**

201 S Halagueno St  
Carlsbad, NM 88220

(575) 689-7040

Serving the Southwest & Rocky Mountains  
www.soudermiller.com



**Site Map**

Artesia Metex Unit #0F1  
Post - Reclamation and Reseeding

Figure 2

Designed SKS	Drawn SKS	Checked SAH
Date: 4/8/2024		
Scale:		
Project No: 5E31796		
Sheet:		





**SOUDER, MILLER & ASSOCIATES**

201 S Halagueno St  
Carlsbad, NM 88220

(575) 689-7040

Serving the Southwest & Rocky Mountains  
[www.soudermiller.com](http://www.soudermiller.com)



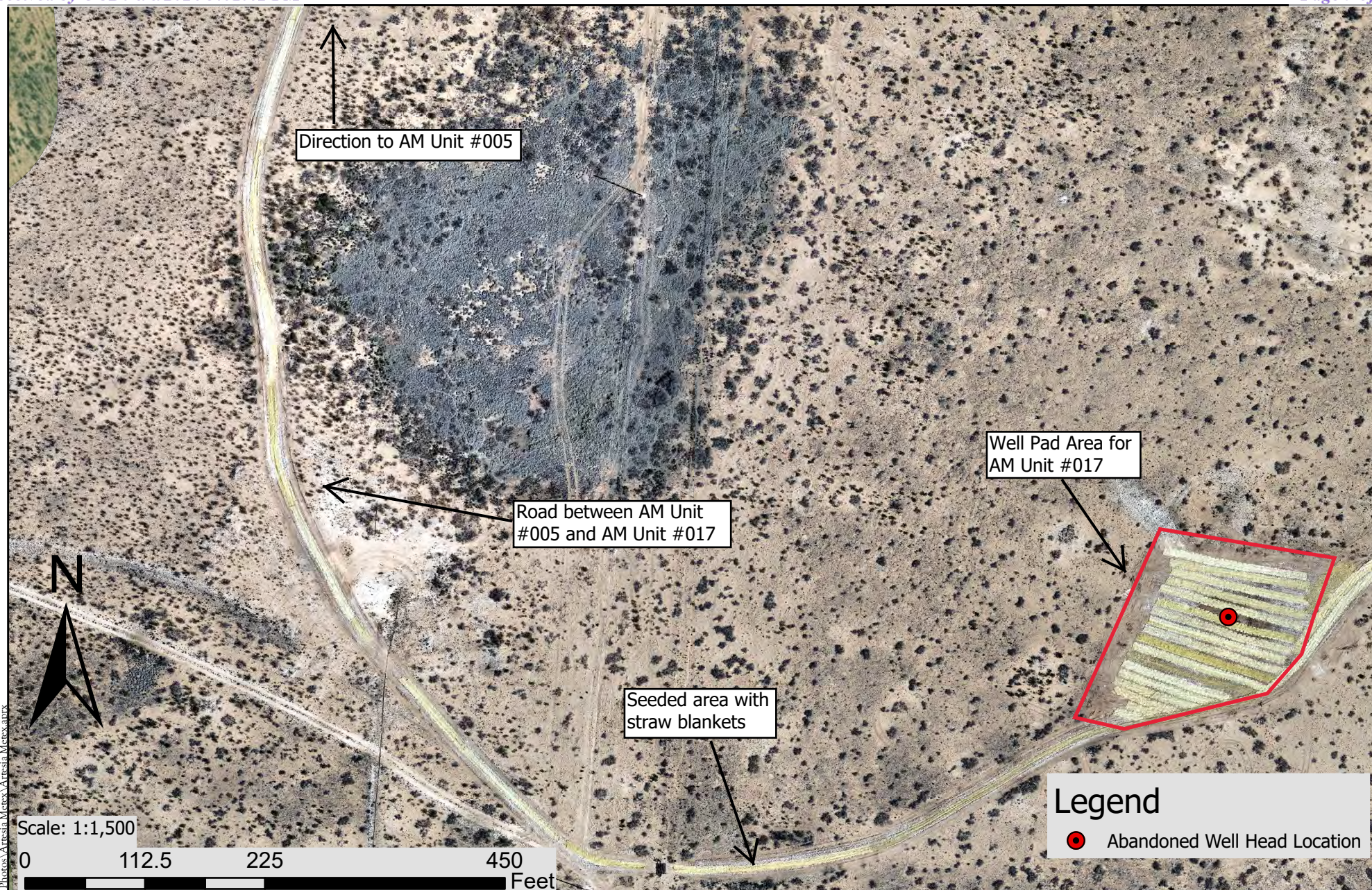
**Site Map**

Artesia Metex Unit #005  
Road Between AM 005 to AM 017  
Post - Reclamation and Reseeding

Figure 3

Designed SKS	Drawn SKS	Checked SAH
Date: 4/8/2024		
Scale:		
Project No: 5E31796		
Sheet:		





SOUDER, MILLER & ASSOCIATES

201 S Halagueno St  
Carlsbad, NM 88220

(575) 689-7040

Serving the Southwest & Rocky Mountains  
www.soudermiller.com



### Site Map

Artesia Metex Unit #005  
Road Between AM 005 to AM 017  
Post - Reclamation and Reseeding

Figure 4

Designed SKS	Drawn SKS	Checked SAH
-----------------	--------------	----------------

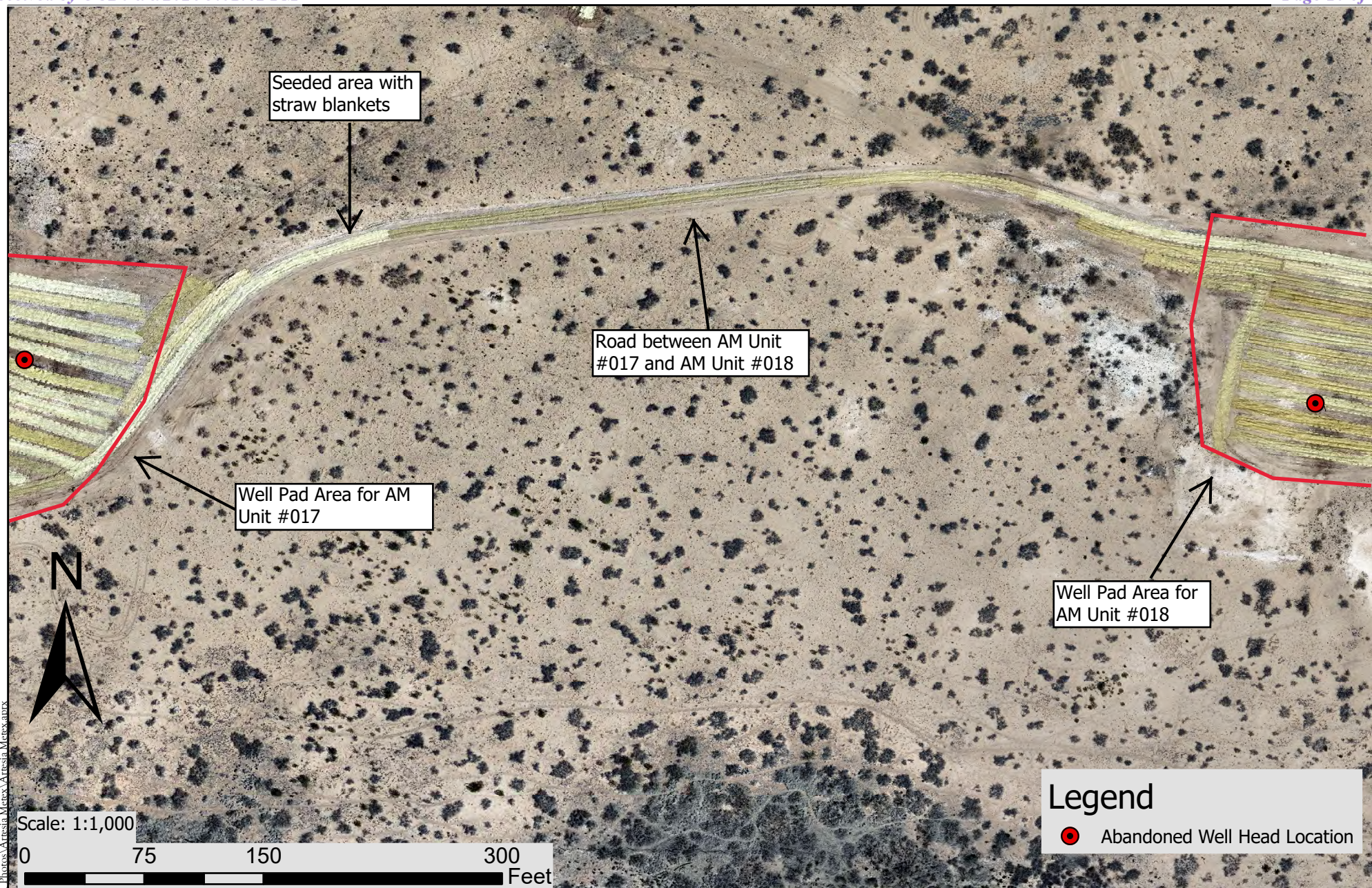
Date: 4/8/2024

Scale:

Project No: 5E31796

Sheet:





**SOUDER, MILLER & ASSOCIATES**

201 S Halagueno St  
Carlsbad, NM 88220

(575) 689-7040

Serving the Southwest & Rocky Mountains  
www.soudermiller.com



### Site Map

Artesia Metex Unit #017 and  
Artesia Metex Unit #018  
Road Between AM 017 to AM 018  
Post - Reclamation and Reseeding

Figure 5

Designed SKS	Drawn SKS	Checked SAH
Date: 4/8/2024		
Scale:		
Project No: 5E31796		
Sheet:		



# APPENDIX A: CORRESPONDENCE

**From:** [Maxwell, Ashley, EMNRD](#)  
**To:** [Stephanie Hinds](#)  
**Cc:** [Smith, Cory, EMNRD](#); [Hall, Brittany, EMNRD](#); [Scott McKittrick](#); [Reid Allan](#)  
**Subject:** [EXTERNAL]Artesia Metex Seeding Mix and NORM Surveying  
**Date:** Monday, September 25, 2023 9:29:22 AM  
**Attachments:** [Seed Mix.kmz](#)  
[Turkey Track ROW Seed Mix.pdf](#)

---

Good Morning Steph,

We are working with the Artesia Metex surface owner, Conoco, on the preferred seeding mix. I have attached a KMZ file that details where the preferred seed mix is used. I am also including a pdf file of the preferred seed mix. I will handle the communication with Conoco. If you have any questions for them, please send them to me.

As far as NORM surveying is concerned, we received some additional guidance from NMED. In your report, provide all calibration records for the equipment that you will be using. Include a site map, identifying the equipment surveyed and the corresponding equipment readouts. If the equipment reads in picocuries per minute, also include the conversion for picocuries per hour. Also, include pictures of the equipment surveyed.

Prior to work starting, let's set up a meeting to establish a timeline and to answer any questions.

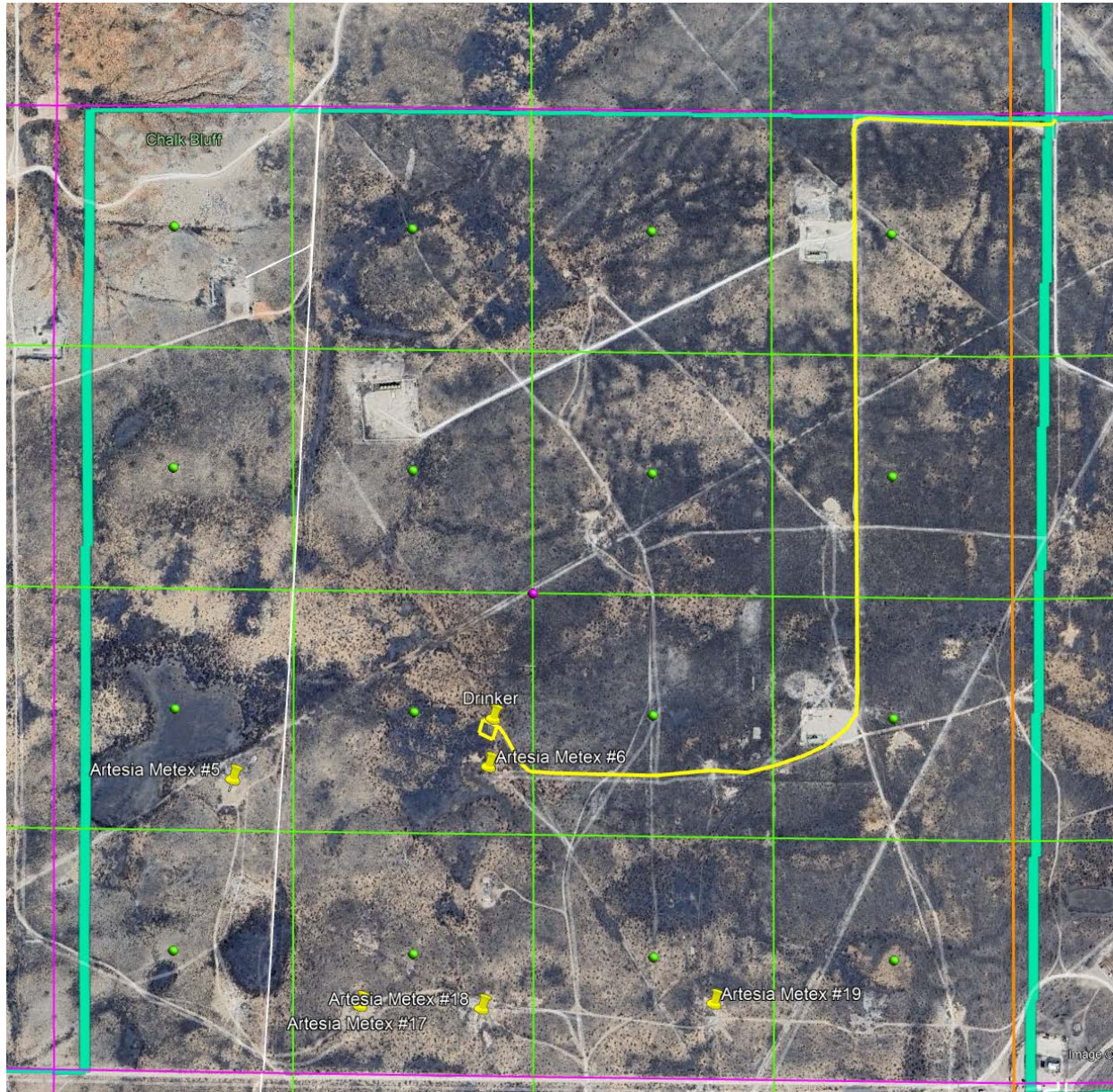
**Ashley Maxwell** • Environmental Specialist  
Environmental Bureau Projects Group  
EMNRD - Oil Conservation Division  
1000 Rio Brazos Road | Aztec, NM 87110  
505.635.5000 | [Ashley.Maxwell@emnrd.nm.gov](mailto:Ashley.Maxwell@emnrd.nm.gov)  
<http://www.emnrd.state.nm.us/OCD/>



From: Maxwell, Ashley, EMNRD  
To: Stephanie Hinds; Reid Allan  
Cc: Smith, Cory, EMNRD; Hall, Brittany, EMNRD; Walker, Crystal, EMNRD  
Subject: [EXTERNAL]Artesia Metex Land Owner Request  
Date: Friday, February 16, 2024 11:54:34 AM  
Attachments: image001.png  
Importance: High

Steph,

Per the land owner, **DO NOT** disturb the yellow highlighted road below:



Ashley Maxwell • Environmental Specialist  
Environmental Bureau Projects Group  
EMNRD - Oil Conservation Division  
1000 Rio Brazos Road | Aztec, NM 87110  
505.635.5000 | [Ashley.Maxwell@emnrd.nm.gov](mailto:Ashley.Maxwell@emnrd.nm.gov)  
<http://www.emnrd.state.nm.us/OCD/>

Please be advised that the new Digital C-141 is live as of December 1, 2023. Please review the new Digital C-141 submission Dec 1, 2023 Guidance document posted on the EMNRD Website prior to submitting any C-141s. The guidance documents can be found at <https://www.emnrd.nm.gov/ocd/ocd-announcements-and-notifications/> or <https://www.emnrd.nm.gov/ocd/ocd-forms/>.

**From:** [Maxwell, Ashley, EMNRD](#)  
**To:** [Stephanie Hinds](#); [Reid Allan](#)  
**Subject:** FW: [EXTERNAL] Google Earth Placemark: Seed Mix.kmz  
**Date:** Friday, February 16, 2024 11:53:41 AM  
**Attachments:** [Needed ROAD.kmz](#)

---

Steph, please see the email below from Brian Hall. Keep a copy of this email on site for your records. I am following up with a their request regarding the Drinker road.

**Ashley Maxwell** • Environmental Specialist  
Environmental Bureau Projects Group  
EMNRD - Oil Conservation Division  
1000 Rio Brazos Road | Aztec, NM 87110  
505.635.5000 | [Ashley.Maxwell@emnrd.nm.gov](mailto:Ashley.Maxwell@emnrd.nm.gov)  
<http://www.emnrd.state.nm.us/OCD/>

Please be advised that the new Digital C-141 is live as of December 1, 2023. Please review the new Digital C-141 submission Dec 1, 2023 Guidance document posted on the EMNRD Website prior to submitting any C-141s. The guidance documents can be found at <https://www.emnrd.nm.gov/ocd/ocd-announcements-and-notifications/> or <https://www.emnrd.nm.gov/ocd/ocd-forms/>.

---

**From:** Hall, Brian <Brian.Hall@conocophillips.com>  
**Sent:** Friday, February 16, 2024 11:46 AM  
**To:** Smith, Cory, EMNRD <cory.smith@emnrd.nm.gov>  
**Cc:** Sitka, Brooks <Brooks.Sitka@conocophillips.com>; Jonnes, Ryan <Ryan.Jonnes@conocophillips.com>; Sellers, Joshua E <Joshua.E.Sellers@conocophillips.com>; Valdez, Dani <Dani.Valdez@conocophillips.com>; Wood, Jesse <Jesse.Wood@conocophillips.com>; Maxwell, Ashley, EMNRD <Ashley.Maxwell@emnrd.nm.gov>; Hall, Brittany, EMNRD <Brittany.Hall@emnrd.nm.gov>; Walker, Crystal, EMNRD <Crystal.Walker@emnrd.nm.gov>  
**Subject:** RE: [EXTERNAL] Google Earth Placemark: Seed Mix.kmz

Cory-

We have a drinker just north of the AM#6. We are requesting that the drinker is not disturbed and the road outlined in the attached .kmz remains in place.

Outside of that, you have permission to start the reclamation process.

Regards,

**Brian Hall, MBA, CPL** | Senior Surface Land Negotiator | Permian Non-OP Surface Land |  
**ConocoPhillips**

**C:** 432-638-8932 | **O:** 432-688-6913 | 600 W. Illinois Ave, 1CC-934, Midland, Texas 79701

# APPENDIX B: FIELD NOTES AND PHOTOGRAPHIC LOG



SUBJECT NORM SWEEP

PROJECT Artesia Muter

PAGE 1 of 1

CLIENT NMOC.

DATE 01/08/24

BY SS

CHECKED

BY

General field notes:

Weather: hi ~46, high winds ~ 30-40 mph; <sup>high</sup> wind warning  
Erin arrived onsite @ Artesia Muter Unit #005 @ ~0900  
Sarahman arrived onsite @ ~0915.

Gathered equipment; PID x2, 4-gas monitor x2, geiger counter, gps.

watched a brief video on how to work the geiger counter & ran a quick test to ensure proper functioning.

signed ~~some~~ HASP & JHA/JSA and began work @ ~1000.

Geiger Counter: model 3 serial # 83222

~~some~~ → w/ high winds, we could not reasonably ~~fly~~ fly the drone, will try again tomorrow.

no readings on geiger counter above 2500 cpm (~14.29  $\mu$ R/hr)  
→ counter was set @ x1 scale.

ran a quick test w/ the drone's software to see general length of time it would take to fly the area under optimal conditions.

left site @ ~1135





SUBJECT Reclamation

PROJECT Artesia Nutex

PAGE 1

CLIENT NMOC

DATE Feb 26, 2024

BY SS

CHECKED

BY

SMA arrived on site at unit #005 @ 0805

→ set up law posters and got JSA & HASP ready for signing  
J&H onsite @ ~0825

had everyone sign the HASP and JSA (paper) @ 0830

talked over general plan for removing any contaminated soil and polyline/piping.  
plus gave an overview of which roads to reclaim.

@ ~0850 J&H began collecting scrap metal and loading in the back of their pickup.

once they collected all the equipment from unit #005 they began a surface scrape of the gravel and concrete washout.

→ revealed some steel staining in which Zach w/ J&H suggested it might be asphaltene (?) or rust from the metal

as the removal of polyline commences, and once they are able to get dirt haulers out here, we will have them scrape a little more off the surface, not to exceed 6in, to try and remove that staining.

after completing the surface scraping @ unit #005, we moved to unit #017 arriving @ 0945 and repeated the process.

~~continuing to~~ continuing to #013 and #019 @ 1115 and 1215 respectively.

@ ~1355 the operator & spotter took their pickup truck w/ the scrap metal in it to the County landfill to dispose of.

→ they returned @ ~1510 for a second load

Steph arrived onsite @ ~1415

Everyone offsite @ 1540.



SUBJECT Artesia Metex - Field Notes

PROJECT

PAGE

CLIENT NMOC

DATE 2/27/2024

BY SH

CHECKED

BY

2/27/2024

0800 - SMA arrived onsite. At Unit 19.

0805 - J+H onsite.

Reviewed the day's scope and safety items. Signed JSA.

0815 - J+H sets up at Unit 19. W/ surface scrape a bit more.  
Stained areas have definite oil odor. Not super strong though.0925 - J+H (Zach) heading to pick up / pull <sup>metal cables</sup> ~~polyline~~ from middle of field.  
Cable is long. Crew pulled cable towards road. Trying to figure out how to cut without fraying and potential to impact face.

1010 - J+H crew off to town to pick up safety masks / shields to safely cut cable.

1015 - Steph + Zach to Unit 006 to see what is there.

1100 - Back at Unit 9. J+H starting to cut <sup>short</sup> poly lines into 3 ft sections.

1130 - Finished cutting

1200 - J+H crew back from town. Marking poly lines every 3 ft. Too windy to scrape soil.

1330 - At Unit 6, picking up ~~barred~~ partially barred piping w/ tractor

1400 - At Unit 19, picking up cut poly lines.

1415 - Offsite. J+H also off site.

0800 - SMA arrived on site

0805 - JSA reviewed safety measures and ~~for~~ scope of work  
Signed JSA.

0830 - waiting for vac truck adapter to flush flow lines

0900 - Second vac truck showed up

0930 - Steph on site

1100 - Started pump out on flow line



SUBJECT Artesa Metex - Field Work

PROJECT

PAGE

CLIENT NMCO

DATE 2/28/2024

BY

CHECKED

BY

11:00 - Georgetown offsite.

J+H prepping for flushing polyline, starting with long one from Unit 19 to Unit 5. Approximately 50 barrels of fresh water pumped through. Approximately ~~400~~ 60 bbls of petroleum liquid coming from poly line. <sup>6+ flush water</sup>  
So total of about 10 bbls of petroleum liquid was in the line.

12:00 - Finished flushing line. Began cutting poly into 3-ft sections.

13:00 - Move over to Unit 18 and pulled polyline to that pad area.

15:25 - Begin cutting the multiple polylines into 3-ft sections. Will come back tomorrow with generator and extra cutting tools.

16:00 - Offsite. J+H offsite too.

0800 On site  
0800 Signed JSA  
0820 Cutting pipe  
0845 Break to warm up  
0930 J+J brought trash trailers to haul off pipe  
1000 Back to cutting pipe and loading into trash bin  
1215 lunch break  
1240 Back to work cutting pipe  
1500 left site

32°degrees  
Cloudy/wet



Artesia Metex - NMOCB March 1, 2024

Field Notes:SMA onsite @ ~~0755~~ @ unit # 018

JSA @ 0800

J+H onsite @ 0700 w/ 2 hacksaws and began work on cutting the poly line

when SMA arrived onsite J+H had ~80% of the poly line cut but still has some metal pipe all over the units that needed to be collected & cut.

→ J+H is going to split cut poly between two trash trailers for weight

Completed cutting poly @ 0330

Started loading poly into trash trailers @ 0840

Miguel w/ J+H arrived onsite @ 0900

→ signed JSA

→ gave me more of a game plan

\* J+H will finish loading poly in trash trailers and then scrape in areas where there was liquid release after poly flushing & cutting.

They will then work on gathering all of the spoil piles to one location to the belly with hauler to travel to all 4 locations w/ piles.

once that is complete (which is their #1 priority because they will be hauling it off on Monday) they will then gather any metal piping and begin cutting that.

@ 0945 They began moving dirt piles & scraping dirty areas

SMA left site @ 1100

0800 - Arrived on site Filled out JSA

0815 - Signed JSA with J+H

0830 - J+H had piled Contaminated Soil onto <sup>Unit</sup> D18 From all units

1000 - Semi brought one load of top soil

1030 - Semi hauled one load of ~~top soil~~ Contaminated Soil. Miguel ~~and~~ estimated 40yds (2 loads) hauled out

1200 - lunch - Semi had a blow out ~~address~~

300 - Continued to scrap the rest of the day.

- Going to continue hauling in the morning.

3-5-2024

- Miguel - Hauled in' 20 yds hauled out 40 yds

3-6-2024

- dozer arrived on site First thing.

1200 - Started ripping ~~prod~~ unit 005

~~3-11-2024~~

- NO Contamination observed on any unit

3-11-2024

J+H OFF back to work on 3-12-24



- 1030 - Filled out JSA
- J+H Crew Signed JSA
- When I Arrived guys were working on unit 018 'Ripping'
- Unit 005, Access road to unit ~~017~~<sup>017</sup>, Unit 017, Access road to Unit 018 were complete.
- 1300 - started Ripping Unit 019.

3-13-24

- J+H Continued Ripping Unit 019. And plan to do Access road in the morning

3-14-24

- 1100 Arrived on site Filled out JSA J+H signed JSA
- 1130 J+H were Ripping access roads from unit 019.
- 1200 Walked around Unit 019 and observed darker colored soil was ripped up with the dozer. It also contained a smell.
- 1215 Notified Steph of findings
- J+H notified as well as OCD
- 1300 Miguel and I walked ~~past~~ unit 006 made a plan to only rip bare spots. Miguel said we may rip up more Contamination due to reserve pad.
- As for now no contamination has been ~~observed~~ observed.

- J+H are moving equipment for seeding in.
- J+H are moving equipment out that is no longer needed
- Bringing in straw rolls to unit sites.

3-19-24

- J+H started seeding and finished up Unit 006 and unit 08 plus access roads.

3-20-24

- J+H finished seeding all units and access roads @ noon and started laying straw.





# NORM SCREENING FORM

LOCATION NAME: Artesia Metex Unit #017				DATE: 01/09/2024	
SMA PERSONNEL: Sarahmay Schlea & Erin Berry				TIME ON SITE: 0955	
INSTRUMENT: Geiger Counter Ludlum Model 3 Serial Number 83222				TIME OFF SITE: 1040	
EQUIPMENT ID	Time	Instrument Reading (cpm)	Exposure Rate ( $\mu$ R/hr)	Photo taken	NOTES/REMARKS (e.g. GPS)
AM17_001	0955	1500	8.57	<input checked="" type="checkbox"/> Yes	32.726590, -104.236539
AM17_002	0958	1400	8.00	<input checked="" type="checkbox"/> Yes	32.726978, -104.236476
AM17_003	1003	1900	10.86	<input checked="" type="checkbox"/> Yes	32.727949, -104.236245
AM17_004	1005	1700	9.71	<input checked="" type="checkbox"/> Yes	32.727713, -104.235921
AM17_005	1008	1400	8.00	<input checked="" type="checkbox"/> Yes	32.727661, -104.235539
AM17_006	1010	1700	9.71	<input checked="" type="checkbox"/> Yes	32.727256, -104.235023
AM17_007	1013	1500	8.57	<input checked="" type="checkbox"/> Yes	32.727336, -104.234800
AM17_008	1019	1200	6.86	<input checked="" type="checkbox"/> Yes	32.726472, -104.235236
AM17_009	1020	1200	6.86	<input checked="" type="checkbox"/> Yes	32.726471, -104.235247
AM17_010	1024	1500	8.57	<input checked="" type="checkbox"/> Yes	32.726491, -104.235445
AM17_011	1025	1500	8.57	<input checked="" type="checkbox"/> Yes	32.726491, -104.235626
AM17_012	1029	1400	8.00	<input checked="" type="checkbox"/> Yes	32.726633, -104.234973
AM17_013	1031	1400	8.00	<input checked="" type="checkbox"/> Yes	32.726937, -104.234681
AM17_014	1036	1600	9.14	<input checked="" type="checkbox"/> Yes	32.727031, -104.234263
AM17_015	1038	1400	8.00	<input checked="" type="checkbox"/> Yes	32.726934, -104.233978
				<input type="checkbox"/> Yes	
				<input type="checkbox"/> Yes	

Conversion rate: 175 cpm per  $\mu$ R/hr. Example: If instrument reading was 2000 cpm, then  $2000/175 = 11.43 \mu$ R/hr.

NORM disposal threshold = 50  $\mu$ R/hr. If exceeds, then notify SMA project manager/safety officer/OCD.

**Photograph Log****SITE: Artesia Metex Unit #017****CLIENT: New Mexico OCD**

Photograph #1	A photograph showing a black power insulator and other debris on a sandy, sparsely vegetated hillside. A yellow tag is attached to the debris. The photo includes a compass overlay at the top showing bearings (E, SE, S) and a scale (90, 120, 150, 180). Below the compass, coordinates are displayed: 133°SE (T), 32.726590°N, 104.236589°W ±13ft, and an elevation of 3570ft. A green timestamp '01-09-2024 09:57:29 MST' is visible in the bottom right corner of the photo.
Client: New Mexico OCD	
Site Name: Artesia Metex Unit #017	
Date Photo Taken: 01.09.2024	
Equipment Location: 32.726590N -104.236589W  S: 24 T: 18S R: 27E Eddy County, New Mexico	
Photo Taken by: Sarahmay Schlea	Description: Unit #017 debris, power insulator, NORM = 1500 cpm.



**Photograph Log****SITE: Artesia Metex Unit #017****CLIENT: New Mexico OCD**

Photograph #2	A photograph of a desert landscape with reddish-brown soil and sparse, dry vegetation. A yellow tag is visible on the ground. At the top of the image, there is a scale bar with markings for NW, N, and NE, and a distance of 330 feet. Below the scale bar, the coordinates 13°N (T) 32.726978°N, 104.236476°W ±2700ft and an elevation of 3571ft are displayed. In the bottom right corner, the date and time 01/09/2024, 09:59:39 MST are shown in green text.
Client: New Mexico OCD	
Site Name: Artesia Metex Unit #017	
Date Photo Taken: 01.09.2024	
Equipment Location: 32.726978N -104.236476W  S: 24 T: 18S R: 27E Eddy County, New Mexico	
Photo Taken by: Sarahmay Schlea	Description: Unit #017 debris, metal cable, NORM = 1400 cpm.

**Photograph Log****SITE: Artesia Metex Unit #017****CLIENT: New Mexico OCD**

Photograph #3	
Client: New Mexico OCD	
Site Name: Artesia Metex Unit #017	
Date Photo Taken: 01.09.2024	
Equipment Location: 32.727949N -104.236245W  S: 24 T: 18S R: 27E Eddy County, New Mexico	
Photo Taken by: Sarahmay Schlea	Description: Unit #017 debris, polyline, NORM = 1900 cpm.



**Photograph Log****SITE: Artesia Metex Unit #017****CLIENT: New Mexico OCD**

Photograph #4	A photograph showing a black polyline pipe lying on the ground in a desert environment. The ground is dry, sandy, and covered with sparse, low-lying vegetation. A yellow tag is attached to the pipe. Above the pipe, a scale bar is visible, marked with 'N', 'NE', and 'E' at 0, 30, 60, and 90 feet. Below the scale bar, the coordinates '48°NE (T) 32.727718°N, 104.235921°W ±16ft ▲ 3570ft' are displayed. In the bottom right corner of the photograph, a green timestamp reads '01/09/2024, 10:07:24 MST'.
Client: New Mexico OCD	
Site Name: Artesia Metex Unit #017	
Date Photo Taken: 01.09.2024	
Equipment Location: 32.727718N -104.235921W  S: 24 T: 18S R: 27E Eddy County, New Mexico	
Photo Taken by: Sarahmay Schlea	Description: Unit #017 debris, polyline, NORM = 1700 cpm.

**Photograph Log****SITE: Artesia Metex Unit #017****CLIENT: New Mexico OCD**

Photograph #5	
Client: New Mexico OCD	
Site Name: Artesia Metex Unit #017	
Date Photo Taken: 01.09.2024	
Equipment Location: 32.727661N -104.235539W  S: 24 T: 18S R: 27E Eddy County, New Mexico	
Photo Taken by: Sarahmay Schlea	Description: Unit #017 debris, polyline, NORM = 1400 cpm.



**Photograph Log****SITE: Artesia Metex Unit #017****CLIENT: New Mexico OCD**

Photograph #6	
Client: New Mexico OCD	
Site Name: Artesia Metex Unit #017	
Date Photo Taken: 01.09.2024	
Equipment Location: 32.727256N -104.235023W  S: 24 T: 18S R: 27E Eddy County, New Mexico	
Photo Taken by: Sarahmay Schlea	Description: Unit #017 debris, polyline, NORM = 1700 cpm.

**Photograph Log****SITE: Artesia Metex Unit #017****CLIENT: New Mexico OCD**

Photograph #7	
Client: New Mexico OCD	
Site Name: Artesia Metex Unit #017	
Date Photo Taken: 01.09.2024	
Equipment Location: 32.727386N -104.234800W  S: 24 T: 18S R: 27E Eddy County, New Mexico	
Photo Taken by: Sarahmay Schlea	Description: Unit #017 debris, polyline, NORM = 1500 cpm.



**Photograph Log****SITE: Artesia Metex Unit #017****CLIENT: New Mexico OCD**

Photograph #8	A photograph showing a desert landscape with sparse vegetation and gravel. In the foreground, there is a piece of electrical equipment, possibly a transformer or control box, with a yellow tag attached. A scale bar at the top of the image shows distances from 210 to 330 feet. Below the scale bar, coordinates are displayed: 273°W (T), 32.726472°N, 104.235236°W ±9ft, and an elevation of 3578ft. The date and time '01/09/2024, 10:23:41 MST' are visible in the bottom right corner of the photo.
Client: New Mexico OCD	
Site Name: Artesia Metex Unit #017	
Date Photo Taken: 01.09.2024	
Equipment Location: 32.726472N -104.235236W  S: 24 T: 18S R: 27E Eddy County, New Mexico	
Photo Taken by: Sarahmay Schlea	Description: Unit #017 debris, electrical equipment, NORM = 1200 cpm.

**Photograph Log****SITE: Artesia Metex Unit #017****CLIENT: New Mexico OCD**

Photograph #9	A photograph showing a vertical metal pipe in a desert environment. The ground is rocky and sandy with sparse vegetation. A compass overlay at the top indicates a bearing of 44°NE (T) and coordinates 32.726471°N, 104.235247°W. A yellow flag is visible on the pipe. A timestamp in the bottom right corner reads 21/09/2024, 10:23:46 MST.
Client: New Mexico OCD	
Site Name: Artesia Metex Unit #017	
Date Photo Taken: 01.09.2024	
Equipment Location: 32.726471N -104.235247W  S: 24 T: 18S R: 27E Eddy County, New Mexico	
Photo Taken by: Sarahmay Schlea	Description: Unit #017 debris, metal piping, NORM = 1200 cpm.



**Photograph Log****SITE: Artesia Metex Unit #017****CLIENT: New Mexico OCD**

Photograph #10	A photograph showing a close-up of debris on the ground. A scale bar at the top indicates distances from 0 to 330 feet, with markers at 240, 270, 300, and 330. Below the scale bar, coordinates are displayed: 282°W (T), 32.726491°N, 104.235445°W ±19ft, and an elevation of 3584ft. The photograph shows a dark, shadowed area on the left, a yellow tag in the center, and a dark, curved object (possibly a wire or pipe) on the right. The ground is dry, sandy, and covered with small rocks and sparse vegetation. A green timestamp '01/09/2024 10:26:52 MST' is visible in the bottom right corner of the photo.
Client: New Mexico OCD	
Site Name: Artesia Metex Unit #017	
Date Photo Taken: 01.09.2024	
Equipment Location: 32.726491N -104.235445W  S: 24 T: 18S R: 27E Eddy County, New Mexico	
Photo Taken by: Sarahmay Schlea	Description: Unit #017 debris, scrap metal, NORM = 1500 cpm.

**Photograph Log****SITE: Artesia Metex Unit #017****CLIENT: New Mexico OCD**

Photograph #11	A photograph showing a close-up of debris and a metal cable on a dry, sandy, and rocky ground. A yellow tag is attached to the cable. Above the photo is a scale bar with markings for 330, 0, 30, 60, and 90 degrees. The scale bar also includes orientation markers for North (N), Northeast (NE), and East (E). Below the scale bar, the following coordinates and elevation are displayed: 34°NE (T) 32.726491°N, 104.235626°W ±13ft ▲ 3639ft. A green timestamp in the bottom right corner of the photo reads: 01/09/2024 10:27:11 MST.
Client: New Mexico OCD	
Site Name: Artesia Metex Unit #017	
Date Photo Taken: 01.09.2024	
Equipment Location: 32.726491N -104.235626W  S: 24 T: 18S R: 27E Eddy County, New Mexico	
Photo Taken by: Sarahmay Schlea	Description: Unit #017 debris, metal cable, NORM = 1500 cpm.



**Photograph Log****SITE: Artesia Metex Unit #017****CLIENT: New Mexico OCD**

Photograph #12	A photograph showing a long, rusted metal pipe lying diagonally across a dry, sandy desert landscape with sparse, low-lying shrubs. At the top of the image is a scale bar with markings for 300, 330, 0, 30, and 60 feet. Above the scale bar are directional labels: NW, N, and NE. Below the scale bar, coordinates are displayed: 9°N (T), 32.726683°N, 104.234973°W ±9ft, and an elevation of 3571ft. In the bottom right corner of the photo, a green timestamp reads '01/09/2024 10:36:41 MST'. A small yellow tag is attached to the pipe.
Client: New Mexico OCD	
Site Name: Artesia Metex Unit #017	
Date Photo Taken: 01.09.2024	
Equipment Location: 32.726683N -104.234681W  S: 24 T: 18S R: 27E Eddy County, New Mexico	
Photo Taken by: Sarahmay Schlea	Description: Unit #017 debris, metal piping, NORM = 1400 cpm.

**Photograph Log****SITE: Artesia Metex Unit #017****CLIENT: New Mexico OCD**

Photograph #13	A photograph showing a long, dark, cylindrical object, likely a pipeline, running diagonally across a dry, scrubby desert landscape. Above the photo is a scale bar with markings for 150, 180, 210, and 240 feet. Below the scale bar, text indicates coordinates: 197°S (T), 32.726837°N, 104.234681°W ±13ft, and an elevation of 3572ft. A green timestamp '01/09/2024 15:33:24 MST' is visible in the bottom right corner of the photo.
Client: New Mexico OCD	
Site Name: Artesia Metex Unit #017	
Date Photo Taken: 01.09.2024	
Equipment Location: 32.726837N -104.234681W  S: 24 T: 18S R: 27E Eddy County, New Mexico	
Photo Taken by: Sarahmay Schlea	Description: Unit #017 debris, polyline, NORM = 1400 cpm.



**Photograph Log****SITE: Artesia Metex Unit #017****CLIENT: New Mexico OCD**

Photograph #14	
Client: New Mexico OCD	
Site Name: Artesia Metex Unit #017	
Date Photo Taken: 01.09.2024	
Equipment Location: 32.727081N -104.234263W  S: 24 T: 18S R: 27E Eddy County, New Mexico	
Photo Taken by: Sarahmay Schlea	Description: Unit #017 debris, polyline T-junction with metal piping, NORM = 1600 cpm.

**Photograph Log****SITE: Artesia Metex Unit #017****CLIENT: New Mexico OCD**

Photograph #15	A photograph showing a black polyline lying on dry, brownish soil. A yellow tag is attached to the polyline. A clipboard with a blue pen is placed on the ground next to the polyline. The photo includes a compass rose at the top showing North (N), Northeast (NE), East (E), and Southeast (SE) directions, with a scale from 0 to 120 degrees. Below the compass, the coordinates are displayed: 70°E (T) 32.726984°N, 104.233978°W ±13ft, and an elevation of 3576ft. A green timestamp at the bottom right of the photo reads "01/09/2024 10:40:01 MST".
Client: New Mexico OCD	
Site Name: Artesia Metex Unit #017	
Date Photo Taken: 01.09.2024	
Equipment Location: 32.726984N -104.233978W  S: 24 T: 18S R: 27E Eddy County, New Mexico	
Photo Taken by: Sarahmay Schlea	Description: Unit #017 debris, polyline, NORM = 1400 cpm.



**Photograph Log****SITE: Artesia Metex Unit #017****CLIENT: New Mexico OCD**

Photograph #16	
Client: New Mexico OCD	
Site Name: Artesia Metex Unit #017	
Date Photo Taken: 02.26.2024	
Site Location: 32.72649N -104.23527W  S: 24 T: 18S R: 27E Eddy County, New Mexico	
Photo Taken by: Sarahmay Schlea	Description: Removal of operational staining.

**Photograph Log****SITE: Artesia Metex Unit #017****CLIENT: New Mexico OCD**

Photograph #17	
Client: New Mexico OCD	
Site Name: Artesia Metex Unit #017	
Date Photo Taken: 02.26.2024	
Site Location: 32.72649N -104.23527W  S: 24 T: 18S R: 27E Eddy County, New Mexico	
Photo Taken by: Sarahmay Schlea	Description: Removal of operational staining.



**Photograph Log****SITE: Artesia Metex Unit #017****CLIENT: New Mexico OCD**

Photograph #18	A photograph of a desert landscape with a compass overlay at the top. The compass shows directions S, SW, W, and NW with degree markings. Below the compass, text reads: "228°SW (T) • 32.726648, -104.235004 ±3m ▲ 1070m". The photograph shows a dry, sandy area with sparse vegetation and a fence line in the distance. In the bottom right corner of the photo, text reads: "Unit 017" and "04 Mar 2024, 10:59:19 AM".
Client: New Mexico OCD	
Site Name: Artesia Metex Unit #017	
Date Photo Taken: 02.26.2024	
Site Location: 32.72649N -104.23527W  S: 24 T: 18S R: 27E Eddy County, New Mexico	
Photo Taken by: Georgeann Goodman	Description: Removal of operational staining. Stockpile of soil on left side of photo.

**Photograph Log****SITE: Artesia Metex Unit #017****CLIENT: New Mexico OCD**

Photograph #19	<p>The photograph shows a wide, unpaved dirt road stretching into the distance under a clear blue sky. The terrain is arid with sparse, low-lying vegetation. A compass overlay at the top of the image indicates a bearing of 135°SE (T) and coordinates 32.726539, -104.237492 ±3m, with an elevation of 1071m. The compass scale shows degrees from 60 to 210. Text at the bottom left of the photo reads 'Ripping complete-road approaching 017' and at the bottom right 'Unit 017 12 Mar 2024, 12:20:26 PM'.</p>
Client: New Mexico OCD	
Site Name: Artesia Metex Unit #017	
Date Photo Taken: 03.12.2024	
Release Location: 32.726539N -104.237492W  S:24 T:18S R:27E Eddy County, New Mexico	
Photo Taken by: Georgeann Goodman	Description: Ripping topsoil along access road to Unit #017.



**Photograph Log****SITE: Artesia Metex Unit #017****CLIENT: New Mexico OCD**

Photograph #20	<p>The photograph shows a wide, unpaved dirt road in a desert environment. A compass overlay at the top of the image indicates a bearing of 253°SW (T) and coordinates 32.725857, -104.236317 ±7m, with an elevation of 1073m. The terrain is arid with sparse, low-lying shrubs. In the bottom right corner of the photo, text reads 'Unit 017' and '12 Mar 2024, 12:25:37 PM'. In the bottom left corner, text reads 'Ripping complete 017'.</p>
Client: New Mexico OCD	
Site Name: Artesia Metex Unit #017	
Date Photo Taken: 03.12.2024	
Release Location: 32.725857N -104.236317W  S:24 T:18S R:27E Eddy County, New Mexico	
Photo Taken by: Georgeann Goodman	Description: Ripping topsoil along access road to Unit #017.

**Photograph Log****SITE: Artesia Metex Unit #017****CLIENT: New Mexico OCD**

Photograph #21	
Client: New Mexico OCD	
Site Name: Artesia Metex Unit #017	
Date Photo Taken: 03.12.2024	
Release Location: 32.726276N -104.235283W  S:24 T:18S R:27E Eddy County, New Mexico	
Photo Taken by: Georgeann Goodman	Description: Ripping complete for Unit #017.



**Photograph Log****SITE: Artesia Metex Unit #017****CLIENT: New Mexico OCD**

Photograph #22	
Client: New Mexico OCD	
Site Name: Artesia Metex Unit #017	
Date Photo Taken: 04.03.2024	
Release Location: 32.726276N -104.235283W  S:24 T:18S R:27E Eddy County, New Mexico	
Photo Taken by: Erin Berry	Description: Seeding complete, application of straw blanket.





**CLIENT: New Mexico OCD**

Photograph #23	
Client: New Mexico OCD	
Site Name: Artesia Metex Unit #017	
Date Photo Taken: 04.03.2024	
Release Location: 32.726276N -104.235283W  S:24 T:18S R:27E Eddy County, New Mexico	
Photo Taken by: Erin Berry	Description: Seeding complete, application of straw blanket.



## APPENDIX C: SEED MIX LIST

## Worksheet for Determining Seeding Rates and Amounts

Client: Turkey Track  
 Planned by: RSJ

Field Office: Artesia W  
 Date: 10/30/2020

Field No.	Acres to be Planted	Species	Planting Rate per Acre	% of Mix	Amount Required per Acre	Total Amount Required
1	1.0	Grama, Blue (Native)	10.0 Pls lb	40%	4.0 Pls lb	4.0 Pls lb
		Dropseed, Sand	1.0 Pls lb	10%	0.1 Pls lb	0.1 Pls lb
		Bluestem, Cane	6.0 Pls lb	5%	0.3 Pls lb	0.3 Pls lb
		Grama, Sideoats (Haskell)	4.5 Pls lb	40%	1.8 Pls lb	1.8 Pls lb
		Plains Bristlegrass, Native	3.0 Pls lb	15%	0.5 Pls lb	0.5 Pls lb
		<b>Total</b>		<b>110%</b>	<b>6.7</b>	<b>6.7</b>
Field No.	Acres to be Planted	Species	Planting Rate per Acre	% of Mix	Amount Required per Acre	Total Amount Required
2	1.0	Bluestem, Sand (Woodward)	5.0 Pls lb	20%	1.0 Pls lb	1.0 Pls lb
		Bluestem, Little (Native)	3.4 Pls lb	30%	1.0 Pls lb	1.0 Pls lb
		Plains Bristlegrass, Native	5.0 Pls lb	20%	1.0 Pls lb	1.0 Pls lb
		Dropseed, Sand	1.0 Pls lb	10%	0.1 Pls lb	0.1 Pls lb
		Grama, Blue (Native)	10.0 Pls lb	20%	2.0 Pls lb	2.0 Pls lb
		Bluestem, Cane	6.0 Pls lb	5%	0.3 Pls lb	0.3 Pls lb
		Grama, Sideoats (Haskell)	4.5 Pls lb	10%	0.5 Pls lb	0.5 Pls lb
		<b>Total</b>		<b>115%</b>	<b>5.9</b>	<b>5.9</b>
Field No.	Acres to be Planted	Species	Planting Rate per Acre	% of Mix	Amount Required per Acre	Total Amount Required
3	1.0	Grama, Sideoats (Haskell)	4.5 Pls lb	40%	1.8 Pls lb	1.8 Pls lb
		Bluestem, Little (Native)	3.4 Pls lb	25%	0.9 Pls lb	0.9 Pls lb
		Grama, Blue (Native)	10.0 Pls lb	40%	4.0 Pls lb	4.0 Pls lb
		Dropseed, Sand	1.0 Pls lb	10%	0.1 Pls lb	0.1 Pls lb
		Bluestem, Cane	6.0 Pls lb	5%	0.3 Pls lb	0.3 Pls lb
		<b>Total</b>		<b>120%</b>	<b>7.1</b>	<b>7.1</b>
Field No.	Acres to be Planted	Species	Planting Rate per Acre	% of Mix	Amount Required per Acre	Total Amount Required
4	1.0	Sacaton, Alkali	1.0 Pls lb	50%	0.5 Pls lb	0.5 Pls lb
		Saltbush, Fourwing	5.0 Pls lb	40%	2.0 Pls lb	2.0 Pls lb
		Grama, Sideoats (Haskell)	4.5 Pls lb	10%	0.5 Pls lb	0.5 Pls lb

Artesia Metex seed mix



Total				100%	3.0	3.0
Field No.	Acres to be Planted	Species	Planting Rate per Acre	% of Mix	Amount Required per Acre	Total Amount Required
5	1.0	Sacaton, Alkali	1.0 Pls lb	40%	0.4 Pls lb	0.4 Pls lb
		Saltbush, Fourwing	5.0 Pls lb	15%	0.8 Pls lb	0.8 Pls lb
		Grama, Sideoats (Haskell)	4.5 Pls lb	50%	2.3 Pls lb	2.3 Pls lb
Total				105%	3.4	3.4
Field No.	Acres to be Planted	Species	Planting Rate per Acre	% of Mix	Amount Required per Acre	Total Amount Required
Total						

## APPENDIX D: WASTE MANIFESTS, DISPOSAL RECORDS





Waste manifests indicates all operationally stained soil was removed from AM Unit #019. Operationally stained soil was stockpiled from all units onto AM Unit #018, and was removed from AM Unit #018

## LEA LAND, LLC SURFACE WASTE LANDFILL

MILE MARKER #64 US HWY 62/180 • 30 MILES EAST OF CARLSBAD, NM • PHONE (575) 887-4048

<b>NON-HAZARDOUS WASTE MANIFEST</b>		<b>No.</b> 201875	<b>Trailer No.</b> J&H SERVICES 682	
<b>GENERATOR</b>	<b>Company Name:</b> J & H Services		<b>Address:</b> 6616 Gulton Ct NE #190 Albuquerque, NM 87109	
	<b>Phone:</b> 505-896-9428		<b>Disposal Date:</b> 03-04-2024 12:06 PM	
	<b>Name Or Description Of Waste Shipped:</b>			
	<input checked="" type="checkbox"/> RCRA Exempt <input type="checkbox"/> RCRA Non-Exempt			
	<b>Weight (lbs):</b> 35780, 36140    TA 71920			
<b>TRANSPORTER</b>	<b>Lease/Job Name:</b> ARTISIA METEX UNIT #19			
	<b>Generator's Representative:</b> Zach Conder			
	<b>Name:</b> J&H Services, Inc.			
	<b>Emergency Contact:</b>			
	<b>Emergency Contact Phone:</b>			
<b>DISPOSAL FACILITY</b>	<b>Transporter: Acknowledgment of Delivery of Material</b>			
	<b>Printed/Typed Name (Impreso/Mecanografico):</b> Raul R Cardenas			
	<b>Signature (Firma):</b> X [Signature] <b>Date:</b> 03-04-2024 12:06 PM			
	<b>Lea Land, LLC</b>		<b>Mile Marker 64, U.S. Hwy 62/180, 30 Miles East Of Carlsbad, NM</b>	
	<b>Permit No:</b> NM-1-0035-New Mexico		<b>Comments:</b>	
<b>Disposal Facility's Certification:</b> I Hereby Certify That The Above-Described Wastes Were Delivered To This Facility.				
<b>Authorized Signature:</b> [Signature]		<b>Unit No:</b> IIA	<b>Date:</b> 03-04-2024	<b>Time:</b> 12:06 PM

LEA LAND, LLC

1300 WEST MAIN STREET • OKLAHOMA CITY, OK 73106 • PHONE (405) 236-4257



# LEA LAND, LLC SURFACE WASTE LANDFILL

MILE MARKER #64 US HWY 62/180 • 30 MILES EAST OF CARLSBAD, NM • PHONE (575) 887-4048

<b>NON-HAZARDOUS WASTE MANIFEST</b>		<b>No.</b> 201902	<b>Trailer No.</b> J&H 682	
<b>GENERATOR</b>	<b>Company Name:</b> J & H Services		<b>Address:</b> 6616 Gulton Ct NE #190 Albuquerque, NM 87109	
	<b>Phone:</b> 505-896-9428		<b>Disposal Date:</b> 03-05-2024 09:22 AM	
	<b>Name Or Description Of Waste Shipped:</b>			
	<input checked="" type="checkbox"/> RCRA Exempt <input type="checkbox"/> RCRA Non-Exempt			
	<b>Weight (lbs):</b> 42540, 43160, 43740    Total 129440			
<b>TRANSPORTER</b>	<b>Lease/Job Name:</b> ARTISIA METEX UNIT # 19			
	<b>Generator's Representative:</b> Zach Conder			
	<b>Name:</b> J&H Services, Inc.			
	<b>Emergency Contact:</b>			
	<b>Emergency Contact Phone:</b>			
<b>DISPOSAL FACILITY</b>	<b>Transporter: Acknowledgment of Delivery of Material</b>			
	<b>Printed/Typed Name (Impreso/Mecanografico):</b> <u>Raul R Cardenas</u>			
	<b>Signature (Firma):</b> <u>[Signature]</u> <b>Date:</b> 03-05-2024 09:22 AM			
	<b>Lea Land, LLC</b>	<b>Mile Marker 64, U.S. Hwy 62/180, 30 Miles East Of Carlsbad, NM</b>		<b>(575) 887-4048</b>
	<b>Permit No:</b> NM-1-0035-New Mexico	<b>Comments:</b>		
<b>Disposal Facility's Certification:</b> I Hereby Certify That The Above-Described Wastes Were Delivered To This Facility.				
<b>Authorized Signature:</b> <u>[Signature]</u>		<b>Unit No:</b> IIA	<b>Date:</b> 03-05-2024	<b>Time:</b> 09:22 AM

LEA LAND, LLC  
1300 WEST MAIN STREET • OKLAHOMA CITY, OK 73106 • PHONE (405) 236-4257



# APPENDIX E: GEIGER COUNTER CALIBRATION RECORD

Scientific and Industrial  
Instruments

www.ludlums.com

## CERTIFICATE OF CALIBRATION

LUDLUM MEASUREMENTS, INC.

501 Oak Street

325-235-5494

Sweetwater, TX 79556, U.S.A.



CERT # 4084.01

Customer JAKD SOLUTIONS LLCORDER NO. 20456634/547544Mfg. Ludlum Measurements, Inc. Model 3Serial No. 83222Mfg. Ludlum Measurements, Inc. Model 44-2Serial No. PR3S4334Cal. Date 24-Oct-23 Cal Due Date 24-Oct-24 Cal. Interval 1 Year Meterface 202-002Check mark ☒ applies to applicable instr. and/or detector IAW mfg. spec. T. 72 °F RH 43 % Alt 702.3 mm Hg☐ New Instrument ☐ Instrument Received ☒ Within Toler.  $\pm 10\%$  ☐ 10-20% ☐ Out of Tol. ☐ Requiring Repair ☐ Other-See comments☒ Mechanical ck.☒ Meter Zeroed☐ Background Subtract☒ Input Sens. Linearity☒ F/S Resp. ck☒ Reset ck.☒ Window Operation☒ Geotropism☒ Audio ck.☐ Alarm Setting ck.☒ Batt. ck.☒ Calibrated in accordance with LMI SOP 14.8☐ Calibrated in accordance with LMI SOP 14.9Instrument Volt Set 750 V Input Sens. 26 mV Det. Oper. 750 V at 26 mV Threshold          =          mV☐ HV Readout (2 points) Ref./Inst.          /          V Ref./Inst.          /          V

## COMMENTS:

Cs-137  $\approx 0.5$   $\mu$ Ci check source SN N/A reads  $\approx 700$  cpm (70 kcpm @ x100) with flat end of 44-2 placed on the label side of the check source.

Gamma Calibration: GM detectors positioned perpendicular to source except for M 44-9 in which the front of probe faces source.

Multimeter uncertainty within 1.3% of reading, Gamma uncertainty within 3.0% of reading, Neutron uncertainty within 7.0% of reading, Count rate uncertainty within 5.4% of reading

RANGE/MULTIPLIER	REFERENCE CAL. POINT	INSTRUMENT REC'D "AS FOUND READING"	INSTRUMENT METER READING
X 100	400K cpm	4 16 cpm	4 16 cpm
X 100	100K cpm	4	4
X 10	40K cpm	4	4
X 10	10K cpm	4	4
X 1	4K cpm	4	4
X 1	1K cpm	4	4
X 0.1	400 cpm	4	4
X 0.1	100 cpm	4	4

ALL Range(s) Calibrated Electronically

Digital	REFERENCE CAL. POINT	INSTRUMENT RECEIVED	INSTRUMENT METER READING	Log	REFERENCE CAL. POINT	INSTRUMENT RECEIVED	INSTRUMENT METER READING
Readout				Scale			

Ludlum Measurements, Inc. certifies that the above instrument has been calibrated by standards traceable to the National Institute of Standards and Technology, or to the calibration facilities of other International Standards Organization members, or have been derived from accepted values of natural physical constants or have been derived by the ratio type of calibration techniques. All pass/fail determinations are based on the manufacturer's specifications without considering uncertainty factors. Measurement results represent expanded uncertainties expressed at approximately the 95% level of confidence, using a coverage factor of k=2. The calibration system conforms to the requirements of ANSI/NCCL Z540-1-1994 and ANSI N323AB-2013.

ISO/IEC 17025:2017(E)  
State of Texas Calibration License No. LO-1963Reference Instruments and/or Sources: Cs-137 S/N: ☐ 059 ☐ 2171CP ☐ 2261CP ☐ 720 ☐ 734 ☐ 781 ☐ 1131 ☐ 1616 ☐ 1696 ☐ 1909 ☐ 1916CP ☐ 2324/2521  
☐ 5717CO ☐ 5719CO ☐ 60646 ☐ 70897 ☐ 73410 ☐ E552 ☐ G112 ☐ 2168CP ☐ S-394 ☐ S-1054 ☐ T10081 ☐ T10082 Neutron Am-241 Be ☐ T-304 Ra-226 ☐ Y982  
☐ E551 ☐ 5105 ☐ CSV280☐ Alpha S/N          ☐ Beta S/N          ☐ Other         ☒ m 500 S/N 189509 ☐ Oscilloscope S/N          ☒ Multimeter S/N 50970100Calibrator Heather Crain Title Calibrator Date 24-Oct-23QC'd By Rudolph Title Final QC Date 25 Oct 23This certificate shall not be reproduced except in full, without the written approval of Ludlum Measurements, Inc.  
FORM C22A 01/07/2020 Page 1 of 2AC Inst. ☐ Passed Dielectric (Hi-Pot) and Continuity Test  
Only ☐ Failed:



**District I**  
1625 N. French Dr., Hobbs, NM 88240  
Phone:(575) 393-6161 Fax:(575) 393-0720  
**District II**  
811 S. First St., Artesia, NM 88210  
Phone:(575) 748-1283 Fax:(575) 748-9720  
**District III**  
1000 Rio Brazos Rd., Aztec, NM 87410  
Phone:(505) 334-6178 Fax:(505) 334-6170  
**District IV**  
1220 S. St Francis Dr., Santa Fe, NM 87505  
Phone:(505) 476-3470 Fax:(505) 476-3462

State of New Mexico  
Energy, Minerals and Natural Resources  
Oil Conservation Division  
1220 S. St Francis Dr.  
Santa Fe, NM 87505

CONDITIONS  
  
Action 351695

CONDITIONS

Operator: CANYON E & P COMPANY 251 O'Connor Ridge Blvd. Irving, TX 75038	OGRID: 269864
	Action Number: 351695
	Action Type: [IM-SD] Well File Support Doc (ENV) (IM-BWF)

CONDITIONS

Created By	Condition	Condition Date
crystal.walker	None	6/6/2024