

Well Name: CANYON LARGO UNIT	Well Location: T25N / R6W / SEC 6 / SWNW / 36.431352 / -107.513163	County or Parish/State: RIO ARRIBA / NM
Well Number: 460	Type of Well: CONVENTIONAL GAS WELL	Allottee or Tribe Name:
Lease Number: NMSF078883	Unit or CA Name:	Unit or CA Number:
US Well Number: 3003927747	Operator: HILCORP ENERGY COMPANY	

Subsequent Report

Sundry ID: 2793912

Type of Submission: Subsequent Report

Date Sundry Submitted: 06/06/2024

Date Operation Actually Began: 05/28/2024

Type of Action: Plug and Abandonment

Time Sundry Submitted: 09:58

Actual Procedure: Hilcorp Energy Company plugged and abandoned the subject well on 6/5/2024 per the attached report.

SR Attachments

Actual Procedure

hilcorp_canyon_largo_unit_460_pdf_20240606095735.pdf

Canyon_Largo_Unit_460_SR_20240606095726.pdf

Received by OCD: 6/6/2024 11:46:01 AM

Page 2 of 8

Well Name: CANYON LARGO UNIT	Well Location: T25N / R6W / SEC 6 / SWNW / 36.431352 / -107.513163	County or Parish/State: RIO ARRIBA / NM
Well Number: 460	Type of Well: CONVENTIONAL GAS WELL	Allottee or Tribe Name:
Lease Number: NMSF078883	Unit or CA Name:	Unit or CA Number:
US Well Number: 3003927747	Operator: HILCORP ENERGY COMPANY	

Operator

I certify that the foregoing is true and correct. Title 18 U.S.C. Section 1001 and Title 43 U.S.C. Section 1212, make it a crime for any person knowingly and willfully to make to any department or agency of the United States any false, fictitious or fraudulent statements or representations as to any matter within its jurisdiction. Electronic submission of Sundry Notices through this system satisfies regulations requiring a

Operator Electronic Signature: TAMMY JONES	Signed on: JUN 06, 2024 09:57 AM
Name: HILCORP ENERGY COMPANY	
Title: Regulatory Compliance Specialist	
Street Address: 382 ROAD 3100	
City: AZTEC	State: NM
Phone: (505) 324-5185	
Email address: TAJONES@HILCORP.COM	

Field

Representative Name:		
Street Address:		
City:	State:	Zip:
Phone:		
Email address:		

BLM Point of Contact

BLM POC Name: MATTHEW H KADE	BLM POC Title: Petroleum Engineer
BLM POC Phone: 5055647736	BLM POC Email Address: MKADE@BLM.GOV
Disposition: Accepted	Disposition Date: 06/06/2024
Signature: Matthew Kade	

CANYON LARGO UNIT 460**30.039.27747****PLUG AND ABANDONMENT**

5/28/2024 – MIRU. CHECK PSI ON WELL SITP 0#, SICP 0#, SIICP N/A, BH 0#, BDW 0 MINS. XO HANDLING TOOLS & PIPE RAMS BACK TO 2.375". HAD ISSUES WITH BOLTS ON WELLHEAD BEING SEIZED UP. ND WH. NU BOP. PRESSURE TEST & FUNCTION TEST BOP'S. BLIND RAMS NOT OPENING & CLOSING. OPEN DOORS TO RAMS & NOTICED CYLINDER BROKEN FROM RAM. ND BOP & NU WH. REPLACEMENT BOP SHOWING UP IN THE MORNING. SISW, DEBRIEF CREW & SDFN. **(BLM REP. MONTY GOMEZ NOT ON LOCATION JUST PHONE UPDATES)**

5/29/2024 – CHECK PSI ON WELL SITP 90#, SICP 0#, SIICP N/A, BH 0#, BDW 2 MINS. WAIT ON REPLACEMENT BOP TO SHOW UP ON LOCATION. UNLOAD BOP & XO FITTINGS. RU DYNAMIC & PT PIPE & BLIND RAMS ON BOP. (CHARTED) GOOD TEST. ND WH. NU BOP & FUNCTION TEST BOP & RU RIG FLOOR. PULL TBG HANGER @ 34K. LD 219 JTS OF 2.375" PROD TBG ONTO TRAILER. ON THE LAST 6 JTS. WELL, STARTED UNLOADING. RAN JT BACK IN THE HOLE. MADE UP 1 JT W/TIW VALVE ONTOP, STABE JT & RAN IN HOLE & SHUT IN TIW VALVE & CASING. SECURED WELL. REPORTED MINOR SPILL TO OFFICE. RU CEMENTERS & PUMP DOWN CASING TO KILL WELL. PUMPED TOTAL OF 30 BBLS. LD LAST 6 JTS. LAST 49 JTS OF PROD TBG SHOWING HEAVY SCALE. MU 4.5" SCRAPER. PU 159 JTS OF 2.375" WORKSTRING TO 4990'. SISW, DEBRIEF CREW & SDFN. **(BLM REP. MONTY GOMEZ ON LOCATION)**

5/30/2024 – CHECK PSI ON WELL SITP 170#, SICP 8#, SIICP N/A, BH 6#, BDW 4 MINS. INFORMED NMOC D & HILCORP OFFICE OF BH PSI @ 6 PSI. FINISH PU 2.375" WORKSTRING W/SCRAPER TO 7205'. TOO H 114 STDS OF 2.375" TBG. LD 4.5" SCRAPER. MU 4.5" CICR. TIH TO 7192'. SET CICR @ 7192'. LW W/47 BBLS & PUMP 130 BBLS. PT TO 560 PSI & FAILED. GETTING INJEC RATE @ 1.1 BBLS/MIN W/100 PSI. **PUMP CEMENT PLUG #1 (DK, GRN, & GAL TOPS)** 83 SXS 16.9 BBLS, 1.15 Y, 15.8# & 5 GAL/SX. TOC @ 6099', BOC @ 7192'. LD 35 JTS. TOO H 97 STDS OF 2.375" TBG. LD SETTING TOOL. WOC. MU TAG SUB. TIH 97 STDS & 5 JTS & TAG #1 PLUG @ 6240'. **PUMP CEMENT PLUG #1B (GAL TOP)** 19 SXS 3.7 BBLS, 1.15 Y, 15.8# & 5 GAL/SX. TOC @ 6000', BOC @ 6240'. LD 7 JTS. R/O 75 BBLS. ONLY GETTING HALF CIRC BACK WHEN R/O. DID NOT SEE CMT UNTIL 57 BBLS INTO R/O. TOO H 90 STDS OF 2.375" TBG. RU WIRELINE, RUN CBL FROM 5800' TO SURFACE. POOH R/D WIRELINE. SISW, DEBRIEF CREW & SDFN. **(BLM REP. MONTY GOMEZ ON LOCATION)**

5/31/2024 – CHECK PSI ON WELL SITP 0#, SICP 0#, SIICP N/A, BH 0#, BDW 0 MINS. BH HAD NO PRESSURE JUST A QUICK VACCUM. MU TAG SUB. TIH 95 STDS OF 2.375" TBG & TAG PLUG #1B @ 6076'. LD 21 JTS TO 5444'. RU CEMENTERS. LW W/2 BBLS & PUMP 5 BBLS. PT TO 560 PSI & FAILED. GETTING INJEC @ 1 BBL/MIN W/90 PSI. **PUMP CEMENT PLUG #2 (MCS TOP)** 19 SXS 3.7 BBLS, 1.15 Y, 15.8# & 5 GAL/SX. TOC @ 5200', BOC @ 5444'. LD 7 JTS. TOO H 20 STDS OF 2.375" TBG. WOC. TIH & TAG #2 PLUG @ 5224'. LD 25 JTS TO 4462'. RU CEMENTERS. LW W/2 BBLS & PUMP 5 BBLS. PT TO 560 PSI & FAILED. GETTING SAME INJEC @ 1 BBL/MIN W/90 PSI. **PUMP CEMENT PLUG #3 (MV & CHC TOPS)** 52 SXS 10.6 BBLS, 1.15 Y, 15.8# & 5 GAL/SX. TOC @ 3775', BOC @ 4462'. LD 22 JTS. TOO H 15 STDS OF 2.375" TBG. WOC. TIH & TAG #3 PLUG @ 3773'. LD 33 JTS. **PUMP CEMENT PLUG #4 (PC,FRD,KRD & OJO TOPS)** 70 SXS 14.1 BBLS, 1.15 Y, 15.8# & 5 GAL/SX. TOC @ 1879', BOC @ 2789'. LD 30 JTS. TOO H 29 STDS OF 2.375" TBG. WOC #4 PLUG UNTIL MONDAY. SISW. DEBRIEF CREW & SDFN. **(BLM REP. MONTY GOMEZ ON LOCATION)**

6/3/2024 – CHECK PSI ON WELL SITP 0#, SICP 0#, SIICP N/A, BH 0#, BDW 0 MINS. BH HAD NO PRESSURE JUST A QUICK VACCUM. MU TAG SUB. TIH 29 STDS & TAG #4 PLUG @ 1841'. LD 22 JTS. LW W/2 BBLS & PUMP 5 BBLS. PT TO 560 PSI & FAILED. STILL GETTING INJECTION RATE @ 1 BBL/MIN W/80 PSI. **PUMP CEMENT PLUG #5 (NC TOP)** 16 SXS 3.2 BBLS, 1.15 Y, 15.8# & 5 GAL/SX. TOC @ 1000', BOC @ 1209'. LD 8 JTS. TOO H 15 STDS OF 2.375" TBG. WOC. TIH & TAG #5 PLUG @ 1015'. LD 21 JTS OF 2.375" TBG. RU WIRELINE, RIH & PERF SQUEEZES HOLES @ 400'. POOH & RD WIRELINE. LW W/8 BBLS & PUMP 18 BBLS.

CANYON LARGO UNIT 460

30.039.27747

PLUG AND ABANDONMENT

GOOD CIRC OUT BH @ SURFACE. 2.2BBLS/MIN @ 70 PSI. TIH 6 STDS OF 2.375" TBG TO 412'. **PUMP CEMENT PLUG #6 (SURFACE)** 143 SXS 29.2 BBLS, 1.15 Y, 15.8# & 5 GAL/SX. TOC @ 0', BOC @ 412'. CMT TO SURFACE IN 8-5/8" CASING (SURFACE) & CMT TO SURFACE IN 4.5" CASING. WASH OUT BOP OF CEMENT & WORKSTRING. WOC #6 PLUG UNTIL WEDNESDAY. (NOTIFIED NMOCD MONICA KUEHLING AND BLM OF RIG MOVE WEDNESDAY FROM CANYON LARGO UNIT 460 TO CANYON LARGO UNIT NP 182) RD RIG FLOOR. SISW, DEBRIEF CREW & SDFN. **(BLM REP. MONTY GOMEZ ON LOCATION)**

6/5/2024 – CHECK PSI ON WELL SITP 0#, SICP 0#, SIICP N/A, BH 0#, BDW 0 MINS. ND BOP & PREP TO CUT OFF WH. CUT OFF WH. (TOC IN 4.5" CAS. 36' & 8-5/8" SURFACE CAS. 12') WELD ON P&A MARKER. FILL CASING AND CELLAR WITH 21 SXS OF CEMENT. RIG DOWN RIG AND EQUIPMENT & MOVE OFF LOCATION. **(RIG RELEASED @ 9:00 PM 6/05/24)**

(BLM REP. MONTY GOMEZ ON LOCATION)

WELL WAS PLUGGED AND ABANDONED ON 06/05/2024.

Tammy Jones

From: John LaMond
Sent: Friday, May 31, 2024 3:15 PM
To: Kuehling, Monica, EMNRD
Cc: Rennick, Kenneth G; Kade, Matthew H; Farmington Regulatory Techs; Brice Clyde - (C); Clay Padgett; Lee Murphy; Rustin Mikeska; John LaMond
Subject: RE: [EXTERNAL] CBL Submission & P&A Request for Hilcorp's CANYON LARGO UNIT 460 (API # 3003927747)

Good afternoon Monica and Kenny,

This morning upon arriving on location, the BH pressure was 0 psi and the production casing pressure was 0 psi. Hilcorp received verbal approval from the NMOCD to proceed with pumping PLUG #4 as outlined below covering the OJO formation.

Thanks,

John LaMond
Operations Engineer – Technical Services Hilcorp Energy Company
1111 Travis
Houston, TX 77002
346-237-2210 (Office)
832-754-9692 (Cell)
jlamond@hilcorp.com

-----Original Message-----

From: Kuehling, Monica, EMNRD <monica.kuehling@emnrd.nm.gov>
Sent: Friday, May 31, 2024 9:19 AM
To: John LaMond <jlamond@hilcorp.com>
Cc: Rennick, Kenneth G <krennick@blm.gov>; Kade, Matthew H <mkade@blm.gov>; Farmington Regulatory Techs <FarmingtonRegulatoryTechs@hilcorp.com>; Brice Clyde - (C) <Brice.Clyde@hilcorp.com>; Clay Padgett <cpadgett@hilcorp.com>; Lee Murphy <lmurphy@hilcorp.com>; Rustin Mikeska <rmikeska@hilcorp.com>
Subject: Re: [EXTERNAL] CBL Submission & P&A Request for Hilcorp's CANYON LARGO UNIT 460 (API # 3003927747)

CAUTION: External sender. DO NOT open links or attachments from UNKNOWN senders.

Nmocd approves with prior approval from blm Notified Thursday that 6 psi was on bradenhead watch bh pressure as coming up hole if still pressure cannot go past Kirtland formation Thank you Monica kuehling Nmocd Sent from my iPad

> On May 31, 2024, at 7:38 AM, John LaMond <jlamond@hilcorp.com> wrote:
>
> CAUTION: This email originated outside of our organization. Exercise caution prior to clicking on links or opening attachments.
> Good afternoon Monica and Kenny,
>
> Hilcorp is currently on the CANYON LARGO UNIT 460 (API # 3003927747) for P&A. I have attached the approved NOI.
>
> On 5/29/2024 there was 0 psi on the BH & 0 psi on the 4.5" casing. Yesterday morning (5/30/2024) we found 6 psi on the BH and 8 psi on the 4-1/2" casing. We will check pressures again this morning.
>

> We set the NOI approved CIBP @ 7,192', and then performed a pressure test against the CIBP (test failed). We then pumped PLUG #1 as approved in the NOI and according to the COA's accounting for BLM's formation tops (est TOC @ 6,149' & est. BOC @ 7,192'). This plug will now be called PLUG #1a.

>

> We ran in hole to tag TOC to find it at 6,240' (GAL formation top @ 2,249'). Hilcorp then received verbal approval from the NMOCD and BLM to pump a minimum of 100' of cement on top of the TOC @ 6,240' (est. TOC @ 6,140'). This will be called PLUG #1b. Hilcorp also received approval to run the CBL from 5,800' to surface since the previously submitted CBL dated 2005-05-05 is logged up to 5,790'.

>

> Attached is the CBL run yesterday (5/30/2024). The log shows TOC @ ~507'.

>

> Moving forward, Hilcorp requests the following adjustments to the procedure as a result of the COAs based on BLM formation tops as well as the CBL. The only outside plug will be at surface. If we get a good pressure test after pumping plugs, we may choose to split up some of these plugs. We will report back before doing that.

>

> Do we have approval from the NMOCD and BLM to proceed with the procedure outlined below and attached? The updated WBD is also attached.

>

> [cid:image003.jpg@01DAB335.9C15BD80]

>

> Please let me know if you have any questions.

>

>

> Thanks,

>

> John LaMond

> Operations Engineer – Technical Services Hilcorp Energy Company

> 1111 Travis

> Houston, TX 77002

> 346-237-2210 (Office)

> 832-754-9692 (Cell)

> jlamond@hilcorp.com<mailto:jlamond@hilcorp.com>

>

>

> _____

> The information contained in this email message is confidential and may be legally privileged and is intended only for the use of the individual or entity named above. If you are not an intended recipient or if you have received this message in error, you are hereby notified that any dissemination, distribution, or copy of this email is strictly prohibited. If you have received this email in error, please immediately notify us by return email or telephone if the sender's phone number is listed above, then promptly and permanently delete this message.

>

> While all reasonable care has been taken to avoid the transmission of viruses, it is the responsibility of the recipient to ensure that the onward transmission, opening, or use of this message and any attachments will not adversely affect its systems or data. No responsibility is accepted by the company in this regard and the recipient should carry out such virus and other checks as it considers appropriate.

>

> _____

>

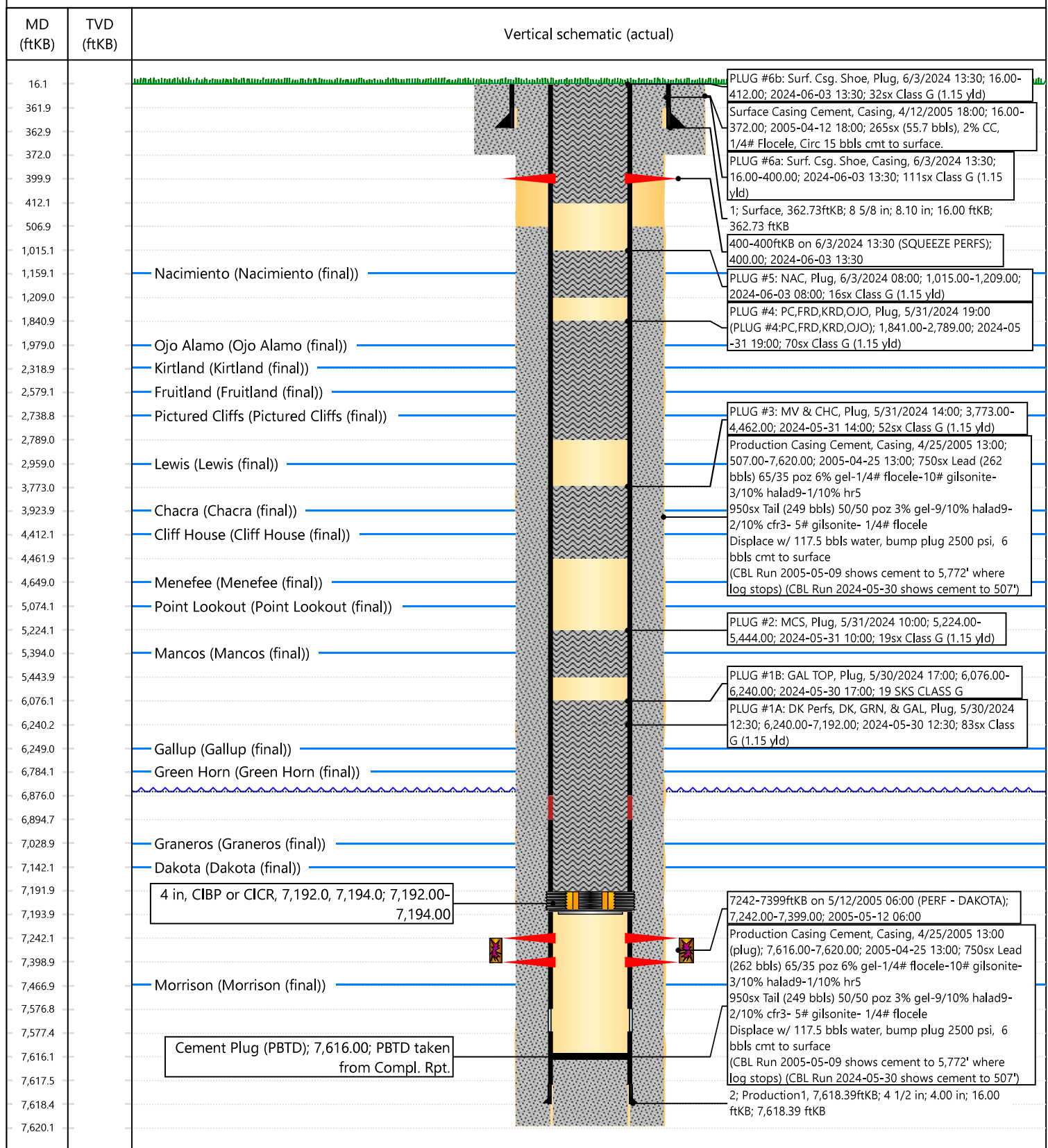


Current Schematic - Version 3

Well Name: CANYON LARGO UNIT #460

API / UWI 3003927747	Surface Legal Location E-6-25N-6W	Field Name	Route 0910	State/Province NEW MEXICO	Well Configuration Type Vertical
Ground Elevation (ft) 6,844.00	Original KB/RT Elevation (ft) 6,860.00	Tubing Hanger Elevation (ft)	RKB to GL (ft) 16.00	KB-Casing Flange Distance (ft)	KB-Tubing Hanger Distance (ft)

Original Hole [Vertical]



District I
1625 N. French Dr., Hobbs, NM 88240
Phone:(575) 393-6161 Fax:(575) 393-0720
District II
811 S. First St., Artesia, NM 88210
Phone:(575) 748-1283 Fax:(575) 748-9720
District III
1000 Rio Brazos Rd., Aztec, NM 87410
Phone:(505) 334-6178 Fax:(505) 334-6170
District IV
1220 S. St Francis Dr., Santa Fe, NM 87505
Phone:(505) 476-3470 Fax:(505) 476-3462

State of New Mexico
Energy, Minerals and Natural Resources
Oil Conservation Division
1220 S. St Francis Dr.
Santa Fe, NM 87505

CONDITIONS

Action 351487

CONDITIONS

Operator: HILCORP ENERGY COMPANY 1111 Travis Street Houston, TX 77002	OGRID: 372171
	Action Number: 351487
	Action Type: [C-103] Sub. Plugging (C-103P)

CONDITIONS

Created By	Condition	Condition Date
mkuehling	well plugged 6/5/24	6/10/2024