

I. REQUEST FOR ALLOWABLE AND AUTHORIZATION TO TRANSPORT

<sup>1</sup> Operator name and Address Hilcorp Energy Company 382 Road 3100 Aztec, NM 87410		<sup>2</sup> OGRID Number 372171
		<sup>3</sup> Reason for Filing Code/ Effective Date RC
<sup>4</sup> API Number 30-039-20618	<sup>5</sup> Pool Name Blanco Mesaverde	<sup>6</sup> Pool Code 72319
<sup>7</sup> Property Code 318710	<sup>8</sup> Property Name SAN JUAN 28-6 UNIT	<sup>9</sup> Well Number 182

II. <sup>10</sup> Surface Location

UI or lot no. M	Section 12	Township 027N	Range 006W	Lot Idn	Feet from the 990	North/South Line South	Feet from the 1180	East/West Line West	County Rio Arriba
--------------------	---------------	------------------	---------------	---------	----------------------	---------------------------	-----------------------	------------------------	----------------------

<sup>11</sup> Bottom Hole Location

UL or lot no.	Section	Township	Range	Lot Idn	Feet from the	North/South Line	Feet from the	East/West Line	County Choose an item.
<sup>12</sup> Lse Code F	<sup>13</sup> Producing Method Code F		<sup>14</sup> Gas Connection Date		<sup>15</sup> C-129 Permit Number	<sup>16</sup> C-129 Effective Date		<sup>17</sup> C-129 Expiration Date	

III. Oil and Gas Transporters

<sup>18</sup> Transporter OGRID	<sup>19</sup> Transporter Name and Address	<sup>20</sup> O/G/W
248440	Western Refinery	O
151618	Enterprise	G

IV. Well Completion Data

<sup>21</sup> Spud Date 6/8/1973	<sup>22</sup> Ready Date 6/8/2024	<sup>23</sup> TD 7,676'	<sup>24</sup> PBTD 7,640'	<sup>25</sup> Perforations 4863' – 5588'	<sup>26</sup> DHC, MC DHC-5387
<sup>27</sup> Hole Size		<sup>28</sup> Casing & Tubing Size	<sup>29</sup> Depth Set		<sup>30</sup> Sacks Cement
13 3/4"		9 5/8" K-55, 32#	229'		225 cf
8 3/4"		7", K-55, 20#	3,507'		231 cf
6 1/4"		4 1/2", K-55, 10.5# & 11.6#	7,676'		639 cf
		2 3/8", J-55, 4.7#	7,589'		

V. Well Test Data

<sup>31</sup> Date New Oil	<sup>32</sup> Gas Delivery Date 6/8/2024	<sup>33</sup> Test Date 6/8/2024	<sup>34</sup> Test Length 4 hrs	<sup>35</sup> Tbg. Pressure 280 psi	<sup>36</sup> Csg. Pressure 250 psi
<sup>37</sup> Choke Size 24/64"	<sup>38</sup> Oil 0 bbl	<sup>39</sup> Water 0 bbl	<sup>40</sup> Gas 87 mcf		<sup>41</sup> Test Method
<sup>42</sup> I hereby certify that the rules of the Oil Conservation Division have been complied with and that the information given above is true and complete to the best of my knowledge and belief. Signature: Cherylene Weston			OIL CONSERVATION DIVISION		
Printed name: Cherylene Weston			Approved by:		
Title: Operations Regulatory Tech Sr.			Title:		
E-mail Address: cweston@hilcorp.com			Approval Date:		
Date: 6/18/2024		Phone: 713-289-2615			

<b>Well Name:</b> SAN JUAN 28-6 UNIT	<b>Well Location:</b> T27N / R6W / SEC 12 / SWSW / 36.584167 / -107.422943	<b>County or Parish/State:</b> RIO ARRIBA / NM
<b>Well Number:</b> 182	<b>Type of Well:</b> CONVENTIONAL GAS WELL	<b>Allottee or Tribe Name:</b>
<b>Lease Number:</b> NMSF079363	<b>Unit or CA Name:</b> SAN JUAN 28-6 UNIT--DK	<b>Unit or CA Number:</b> NMNM78412C
<b>US Well Number:</b> 3003920618	<b>Operator:</b> HILCORP ENERGY COMPANY	

### Subsequent Report

**Sundry ID:** 2795915

**Type of Submission:** Subsequent Report

**Type of Action:** Recompletion

**Date Sundry Submitted:** 06/18/2024

**Time Sundry Submitted:** 11:48

**Date Operation Actually Began:** 05/13/2024

**Actual Procedure:** The subject well was recompleted in the Mesaverde per the attached reports.

### SR Attachments

#### Actual Procedure

SJ\_28\_6\_Unit\_182\_RC\_Sundry\_20240618114826.pdf

**Well Name:** SAN JUAN 28-6 UNIT

**Well Location:** T27N / R6W / SEC 12 /  
SWSW / 36.584167 / -107.422943

**County or Parish/State:** RIO  
ARRIBA / NM

**Well Number:** 182

**Type of Well:** CONVENTIONAL GAS  
WELL

**Allottee or Tribe Name:**

**Lease Number:** NMSF079363

**Unit or CA Name:** SAN JUAN 28-6  
UNIT--DK

**Unit or CA Number:**  
NMNM78412C

**US Well Number:** 3003920618

**Operator:** HILCORP ENERGY  
COMPANY

### Operator

*I certify that the foregoing is true and correct. Title 18 U.S.C. Section 1001 and Title 43 U.S.C. Section 1212, make it a crime for any person knowingly and willfully to make to any department or agency of the United States any false, fictitious or fraudulent statements or representations as to any matter within its jurisdiction. Electronic submission of Sundry Notices through this system satisfies regulations requiring a*

**Operator Electronic Signature:** CHERYLENE WESTON

**Signed on:** JUN 18, 2024 11:48 AM

**Name:** HILCORP ENERGY COMPANY

**Title:** Operations/Regulatory Tech - Sr

**Street Address:** 1111 TRAVIS STREET

**City:** HOUSTON

**State:** TX

**Phone:** (713) 289-2615

**Email address:** CWESTON@HILCORP.COM

### Field

**Representative Name:**

**Street Address:**

**City:**

**State:**

**Zip:**

**Phone:**

**Email address:**

### BLM Point of Contact

**BLM POC Name:** KENNETH G RENNICK

**BLM POC Title:** Petroleum Engineer

**BLM POC Phone:** 5055647742

**BLM POC Email Address:** krennick@blm.gov

**Disposition:** Accepted

**Disposition Date:** 06/18/2024

**Signature:** Kenneth Rennick



## Well Operations Summary L48

Well Name: SAN JUAN 28-6 UNIT #182

API: 3003920618

Field: BASIN DAKOTA (PRORATED GAS)

State: NEW MEXICO

Permit to Drill (PTD) #:

Sundry #:

Rig/Service: BHSE 38

## Jobs

Actual Start Date: 5/13/2024

End Date:

Report Number  
1Report Start Date  
5/13/2024Report End Date  
5/13/2024

## Operation

TRAVEL TO S.J. 29-7 #117 WELLSITE. CREW ON HILCORP YARD AT 0500 HOURS.

PJSA WITH CREWS.

MOVE IN, RIG UP EXPERT SLICKLINE SERVICES. SITP- 60 PSI. SICP- 125 PSI.  
MADE 4- RUNS.1ST RUN: 1.50" O.D. R.B. TOOL TO 7,584' SLM, NO RECOVERY, SHEARED OFF.  
2ND RUN: RUN IN WITH 3-SLIP STOP, SET AT 7,583' SLM.  
3RD RUN: RUN IN WITH TUBING PERF GUN, STUCK IN TIGHT SPOT AT 2,744' SLM, ATTEMPT TO WORK FREE. SHEARED OFF OF GUN.  
4TH RUN: RUN IN WITH 3-SLIP STOP, SET AT 2,743' SLM.  
FLUID LEVEL AT 6,950'.

RIG DOWN, MOVE OUT EXPERT SLICKLINE SERVICES.

RIG MOVE OPERATIONS. MOBILIZED HEC RIG EQUIPMENT FROM THE #117 WELLSITE TO THE  
S.J. 28-6 #182 WELLSITE (34.5 MILE MOVE). LEASE ROADS VERY ROUGH.RIG UP SERVICE UNIT. CONTINUE TO MOVE IN RIG EQUIPMENT. LEASE ROAD VERY ROUGH AND LOCATION IS SMALL. STAGE IN EQUIPMENT.  
SLOWING OPERATIONS DOWN.

CHECK WELL PRESSURES. SITP-60 PSI. SICP-125 PSI. SIICP-0 PSI. SIBHP-0 PSI. OPEN WELL. BLOWDOWN IN 30 MINUTES TO A LIGHT BLOW.

NIPPLE DOWN WELLHEAD. WELLHEAD BOLTS RUSTY & CORRODED. LOCKDOWN PINS STIFF BUT ABLE TO FUNCTION. NIPPLE UP BOP ASSEMBLY.  
INSTALL 1 1/2" PIPE RAMS. FUNCTION TEST. TEST GOOD.RIG UP FLOOR & TUBING HANDLING TOOLS. INSTALL 1 1/2" SLIP-GRIP ELEVATORS. ATTEMPT TO UNSET TBG HANGER AT 45,000 LBS. TUBING  
HANGER IS STUCK IN THE HANGER BOWL. UNABLE TO WORK FREE.

CONTINUED TO WORK TUBING HANGER. HANGER CAME FREE AT 45,000 LBS. PULL HANGER TO THE FLOOR AND LAYDOWN.

START TRIP OUT LAYING DOWN 1 1/2" TUBING ONTO FLOAT. TRIPPED OUT WITH 86 JOINTS (+/- 2,750').

SECURED WELL. SECURED RIG AND ALL EQUIPMENT. DEBRIEF CREW. SHUTDOWN OPERATIONS FOR THE EVENING.

CREW TRAVEL TO YARD.

Report Number  
2Report Start Date  
5/14/2024Report End Date  
5/14/2024

## Operation

CREW TRAVEL TO WELLSITE. CREW ON HILCORP YARD AT 0500 HOUS.

PJSA WITH CREWS. SERVICE AND START EQUIPMENT.

CHECK WELL PRESSURES. SITP-0 PSI. SICP-160 PSI. SIICP-0 PSI. SIBHP-0 PSI. OPEN WELL. BLOWDOWN IN 30 MINUTES TO A LIGHT BLOW.

MOVE IN, RIG UP EXPERT SLICKLINE SERVICES. SITP- 0 PSI. SICP- 160 PSI.  
MADE 2- RUNS.1ST RUN: 1.50" O.D. GAUGE RING TO 4,125' SLM, FLUID LEVEL AT 3,540' WLM.  
2ND RUN: 1.50" O.D. TUBING PERF GUN, UNABLE TO GET PAST 820' WLM.

RIG DOWN, MOVE OUT EXPERT SLICKLINE SERVICES.

CONTINUE TRIP OUT OF WELL LAYING DOWN 1 1/2" WELL TUBING. LAID DOWN 236 JOINTS OF  
1 1/2" 2.9# EUE J-55 WELL TUBING.MOVE IN, CHANGE OUT TUBING FLOATS.  
RECEIVED 245- JOINTS (7,768.80') OF 2 3/8" 4.7# J-55 WHITE BAND TUBING FROM TUBOSCOPE PIPE YARD.

SEND IN 236- JOINTS (7,316') OF 1 1/2" 2.9# EUE J-55 WELL TUBING THAT IS BEING REPLACED TO TUBOSCOPE PIPE YARD FOR CREDIT.

MAKE UP 4 1/2" CASING CLEANOUT BHA ASSEMBLY. PREPARE TO TALLY &amp; TRIP IN.

1- 3.75" O.D. X .40' ROLLER BIT.  
1- 3.75" O.D. X 3.20 STRING MILL.  
1- 3.125" O.D. X 1.33' BIT SUB.

TALLY &amp; START TRIP IN WITH 2 3/8" WHITE BAND REPLACEMENT TUBING.

LUNCH/WATER BREAK.

CONTINUE TO TALLY & TRIP IN WITH 2 3/8" WHITE BAND REPLACEMENT TUBING TO 7,440'. TRIP OUT STANDING BACK TUBING INTO THE DERRICK.  
SECURED WELL. SECURED RIG AND ALL EQUIPMENT. DEBRIEF CREW. SHUTDOWN OPERATIONS FOR THE EVENING.



## Well Operations Summary L48

Well Name: SAN JUAN 28-6 UNIT #182

API: 3003920618

Field: BASIN DAKOTA (PRORATED GAS)

State: NEW MEXICO

Sundry #:

Rig/Service: BHSE 38

## Operation

CREW TRAVEL TO YARD.

Report Number  
3Report Start Date  
5/15/2024Report End Date  
5/15/2024

## Operation

CREW TRAVEL TO WELLSITE.

PJSA WITH CREW. SERVICE AND START EQUIPMENT.

CHECK WELL PRESSURES. SICP-175 PSI. SIICP-0 PSI. SIBHP-0 PSI. OPEN WELL. BLOWDOWN IN 30 MINUTES TO A CONTINUOUS LIGHT BLOW.

MAKE UP HILCORP 4 1/2" CAST IRON BRIDGE PLUG. KILL CASING PRESSURE WITH 10 BBLs OF BIOCIDAL WATER.

TRIP IN WITH 4 1/2" CIBP SET AT 7,402'. APPEARED TO HAVE A GOOD SET. LAYDOWN 1 JOINT OF TUBING.

RIG UP LINE TO THE TUBING. CIRCULATE 4 1/2" CASING ABOVE THE CIBP WITH 110 BBLs OF WATER.

CLOSE PIPE RAMS. TEST THE 4 1/2" CASING 580 PSI. STARTED GAINING PRESSURE DUE TO WATER HEATING. BLEED OFF PRESSURE.

CREW LUNCH/WATER BREAK.

TRIP OUT OF WELL WITH TUBING/SETTING TOOL.

MOVE IN BASIN WIRELINE UNIT &amp; TOOLS. HOLD PJSA WITH CREWS.

RIG UP BASIN WIRELINE UNIT &amp; LOGGING TOOLS.

RUN GR/CCL/CBL FROM 7,400' WLM TO 11.5' WLM. DOWNLOAD DATA. CEMENT BOND EVALUATION TO BE DETERMINED BY HEC ENGINEERING GROUP.

SEND RESULTS TO HEC ENGINEERING. RIG DOWN BASIN WIRELINE TOOLS OFF WELLHEAD.

CLOSE BLIND RAMS. TEST THE 4 1/2" CASING TO 580 PSI. TEST WAS GOOD. BLEED OFF PRESSURE.

SECURED WELL. SECURED RIG AND ALL EQUIPMENT. DEBRIEF CREW. SHUTDOWN OPERATIONS FOR THE EVENING.

CREW TRAVEL TO YARD.

Report Number  
4Report Start Date  
5/16/2024Report End Date  
5/16/2024

## Operation

CREW TRAVEL TO WELLSITE. CREW ON HILCORP YARD AT 0500 HOURS.

PJSA WITH CREW. SERVICE AND START EQUIPMENT.

CHECK WELL PRESSURES. SICP-0 PSI. SIICP-0 PSI. SIBHP-0 PSI. OPEN WELL. NO PRESSURE TO BLOWDOWN.

TOP OFF WELL. MIRU WILSON SRVCS. PRESSURE TEST UNIT. TEST GOOD. CONDUCT MOCK TEST ON 4 1/2" CASING TO 580 PSI. TEST WAS GOOD.

WAIT ON NMOCD REPRESENTATIVE TO ARRIVE.

MOVE IN NMOCD. CONDUCT BRADENHEAD TEST. TEST WAS GOOD. CONDUCT MIT TEST. CIBP AT 7,400'. TEST 4 1/2" CSG &amp; CIBP TO 560 PSI FOR 30 MINUTES. TEST GOOD.

WITNESSED BY EILEEN MEDRANO OF THE NMOCD. NOTIFY HEC ENGINEERING OF TEST RESULTS

RIG UP BASIN WIRELINE UNIT. MAKE UP AND RUN IN WITH SELECT 4 1/2" COMPOSITE BRIDGE PLUG. SET AT 5,680' WLM. CORRELATED OFF OF GR/CCL/CBL LOG DATED 5-15-24.

RIG DOWN BASIN WIRELINE UNIT &amp; TOOLS.

MOVE IN BIG RED &amp; WELLCHECK. RIG DOWN FLOOR AND TUBING TOOLS. NIPPLE DOWN BOP ASSEMBLY. NIPPLE DOWN 3K TUBING HEAD. CUT, WELD &amp; DRESS UP 4 1/2" CASING STUB. INSTALL 5K TUBING HEAD ASSEMBLY. TEST VOID SEALS TO 1,750 PSI. TESTED GOOD. RIG DOWN RELEASED BIG RED &amp; WELDING SERVICES.

NIPPLE UP BOP ASSEMBLY &amp; FUNCTION TEST. TESTED GOOD. RIG UP FLOOR &amp; TUBING TOOLS.

RIG UP WILSON TEST UNIT. PRESSURE TEST 4 1/2" CASING TO 1,600 PSI. TEST WAS GOOD. RELEASE PRESSURE.

LIGHTNING &amp; RAIN STORM MOVED INTO THE AREA, WILL SUSPEND OPERATIONS FOR THE EVENING.

SECURED WELL. SECURED RIG AND ALL EQUIPMENT. DEBRIEF CREW. SHUTDOWN OPERATIONS FOR THE EVENING.

CREW TRAVEL TO YARD.

Report Number  
5Report Start Date  
5/17/2024Report End Date  
5/17/2024

## Operation

CREW TRAVEL TO WELLSITE. CREW ON HILCORP YARD AT 0500 HOURS.

PJSA WITH CREW. SERVICE AND START EQUIPMENT.

CHECK WELL PRESSURES. SICP-0 PSI. SIICP-0 PSI. SIBHP-0 PSI. OPEN WELL. NO PRESSURE TO BLOWDOWN.

MAKE UP SELECT OIL TOOLS 4 1/2" RETRIEVABLE BRIDGE PLUG ONTO THE TUBING.

TRIP INTO THE WELL WITH RBP AND SET AT 2,900'. LAYDOWN 1 TUBING JOINT. INSTALL 2 3/8" TUBING HANGER AND LAND INTO THE 5K TUBING HEAD. SECURE THE LOCKDOWN PINS. INSTALL TIW VALVE ONTO THE TUBING STRING.

LOAD 4 1/2" X 7" CASING ANNULUS WITH 10 BBLs OF WATER/PACKER FLUID.



Well Operations Summary L48

Well Name: SAN JUAN 28-6 UNIT #182

API: 3003920618			Field: BASIN DAKOTA (PRORATED GAS)			State: NEW MEXICO		
			Sundry #:			Rig/Service: BHSE 38		
Operation								
RIG UP WILSON TEST UNIT. PRESSURE TEST THE 4 1/2" CASING ABOVE THE RBP AT 2,900' TO 4,000 PSI. TEST WAS GOOD. RELEASE PRESSURE.								
RELEASE LOCKDOWN PINS. PULL TUBING HANGER TO THE FLOOR AND REMOVE. LATCH ONTO AND RELEASE THE RBP AT 2,900'.								
TRIP OUT OF THE WELL LAYING DOWN THE 2 3/8" TUBING ONTO THE FLOAT. LAY DOWN 4 1/2" RBP.								
TRIP IN REMAINING TUBING FROM THE DERRICK AND LAY DOWN.								
WILL SEND IN 245 JOINTS OF 2 3/8" WHITE BAND TUBING TO TUBOSCOPE FOR STORAGE UNTIL NEEDED FOR THE AFTER FRAC OPERATIONS.								
RIG DOWN SERVICE UNIT & EQUIPMENT. MOVE IN CNJ TRUCKING. LOAD UP AND MOVE OFF WELLSITE TO THE S.J. 29-6 #49A.								
Report Number 6			Report Start Date 5/22/2024			Report End Date 5/22/2024		
Operation								
SPOT IN BIG RED TOOL AND WELLCHECK. NIPPLE DOWN NIGHTCAP, NIPPLE UP FRAC STACK AND TEST TO 5K PSI.								
Report Number 7			Report Start Date 6/3/2024			Report End Date 6/3/2024		
Operation								
RIG UP BASIN WIRELINE. RIH, <b>PERFORATE STAGE 1 (PT LOOKOUT/LOWER MENEFFEE) AT 5204' - 5588', 0.33" DIA, 1 SPF (23 SHOTS).</b> POOH.								
RIG UP FRAC CREW. PRIME, COOL DOWN, TEST, SAFETY MEETING.								
WORK ON FRAC VAN COMPUTER RACK AND BLENDER (DATA TRANSFER ISSUE). <b>FRAC STAGE 1: BROKE DOWN WELL WITH WATER AND 500 GAL 15% HCL. FOAM FRAC'D PT LOOKOUT WITH 125,178 LBS 20/40 ARIZONA AND 48,090 GAL SLICKWATER AND 1.62 MILLION SCF N2. 70 QUALITY. AVG RATE = 60 BPM, AVG PSI = 2325. ISIP WAS 0 PSI. SHUT DOWN IN PAD TO FIX LEAK ON N2 LINE.</b>								
<b>RU WIRELINE. RIH, SET BRIDGE PLUG AT 5,150'. PERFORATE STAGE 2, (CLIFFHOUSE/UPPER MENEFFEE) AT 4863' - 5136', 0.33" DIA, 1 SPF (22 SHOTS). FRAC STAGE 2: BROKE DOWN WELL WITH WATER AND 500 GAL 15% HCL. FOAM FRAC'D CLIFFHOUSE / MENEFFEE WITH 125,264 LBS 20/40 ARIZONA AND 43,428 GAL SLICKWATER AND 1.44 MILLION SCF N2. 70 QUALITY. AVG RATE = 60 BPM, AVG PSI = 2429. ISIP WAS 100 PSI. (720 PSI IN 5 MINUTES).</b>								
RIH AND <b>SET CBP AT 4,656'</b> . BLEED OFF, PLUG HOLDING.								
SHUT IN WELL AND RIG DOWN CREWS. TOTAL FRAC LOAD = 2203 BBLS (INCLUDING 24 BBLS OF ACID). TOTAL SAND = 250,442 LBS. TOTAL N2 = 3.1 MILLION SCF.								
Report Number 8			Report Start Date 6/4/2024			Report End Date 6/4/2024		
Operation								
PJSM W/AOL F/RIG MOVE.								
LOAD OUT TRUCKS. MOB RIG & EQUIP F/M&R YARD T/SAN JUAN 28-6 UNIT #182 (58 MILE MOVE).								
MIRU RIG & EQUIP. FIRST R/U								
PJSM. SICP-0, SITP-0, SIICP-0, SIBHP-0. BDW 0 MINUTES, NO PRESSURE.								
N/D FRAC STACK. N/U BOP. R/U WORK FLOOR & TBG HANLING EQUIP.								
R/U TESTER. PRTS BOP T/250 PSI LOW & 2500 PSI HIGH, OK. CHART & RECORC TEST.								
R/U 3" LINES & AIR PKG.								
3-7/8" 3 BLADE JUNK MILL. TALLY & TIH ON 2-3/8" 4.7#, J-55 TBG F/TRAILER T/3950'.								
SWI. SECURE LOC. SDFN.								
CREW TRVL T/YARD.								
Report Number 9			Report Start Date 6/5/2024			Report End Date 6/5/2024		
Operation								
CREW TRVL T/LOC.								
PJSM. SICP-0, SITP-0, SIICP-0, SIBHP-0. BDW 0 MINUTES, NO PRESSURE.								
UNLOAD HOLE @ 3950' W/AIR.								
CONT TIH W/3-7/8" JNK MILL. TAG 4-1/2" CBP @ 4656'. R/U PWR SWIVEL. ESTABLISH CIRC W/1350 CFM, 12 BPH FW, 1 GPH SOAP & 1 GPH CI.								
<b>MILL OUT CBP #1 F/4656' T/ 4658'</b> (40 MINUTES). CIRC CLEAN. SINGLE IN W/PWR SWVL . TAG FILL @ 5040' (110' FILL). ESTABLISH CIRC & CLEAN OUT FILL (SAND & PLUG PARTS F/5040 T/CBP #2 @ 5150'.								
<b>MILL OUT CBP #2 F/5150' T/ 5152'</b> (70 MINUTES). CIRC CLEAN. SINGLE IN W/SWIVEL & TAG FILL @ 5554' (126' FILL). ESTABLISH CIRC W/1350 CFM, 12 BPH FW, 1 GPH SOAP & 1 GPH CI. CLEAN OUT T/CBP #3 @ 5680'. PUMP SWEEPS & CIRC CLEAN (1/2 CUP SAND IN 5 GAL SAMPLE).								
R/D PWR SWIVEL & HANG IN DERRICK.								
TOH W/3-7/8" JNK MILL T/4650' (ABOVE TOP PERF).								
SWI. SECURE LOC. SDFN.								
CREW TRVL T/YARD.								
Report Number 10			Report Start Date 6/6/2024			Report End Date 6/6/2024		
Operation								
CREW TRVL T/LOC.								
PJSM. SICP-650, SITP-NA, SIICP-0, SIBHP-0. BDW 20 MINUTES.								
TIH W/3-7/8" JNK MILL F/4650'. TAG FILL @ 5666' (14' FILL OVER NITE).								
R/U PWR SWIVEL. ESTABLISH CIRC W/AIR USING 1350 CFM, 12 BPH FW, 1 GPH SOAP & 1 GPH CI.								
CLEAN OUT T/4-1/2" CBP @ 5680'. <b>DRILL OUT CBP #3 T/5682'</b> (75 MINUTES). SINGLE IN 2 JNTS W/SWIVEL. HANG SWIVEL IN DERRICK.								
www.peloton.com								
Page 3/4								
Report Printed: 6/14/2024								



Well Operations Summary L48

Well Name: SAN JUAN 28-6 UNIT #182

API: 3003920618	Field: BASIN DAKOTA (PRORATED GAS)	State: NEW MEXICO
	Sundry #:	Rig/Service: BHSE 38

Operation		
TIH W/3-7/8" MILL. TAG 4-1/2" CIBP @ 7400'. R/U PWR SWIVEL. ESTABLISH CIRC W/1350 CFM, 12 BPH FW, 1 GPH SOAP & 1 GPH CI. DRILL OUT 4-1/2" CIBP, DAKOTA ISOLATION PLUG F7400' T/7403' (2.5 HRS).		
SINGLE IN W/SWIVEL. TAG FILL @ 7592' (70' FILL). ESTABLISH CIRC & CLEAN OUT FILL T/7640'. HELD UP @ 7640', TORQUE STALLING WHEN ANY WEIGHT APPLIED. NO PROGRESS F/1 HR. REPORT T/ENGINEER. DECISION MADE T/STOP TRYING TO CLEAN OUT PAST 7640' (10' BELOW BOTTOM DAKOTA PERF. LEFT 22' FILL ABOVE PBTD). CIRC HOLE CLEAN. R/D POWER SWIVEL.		
TOH W/3-7/8" JNK MILL T/4650'. NOTE: RIG OVERHEATED & NEEDED TIME T/COOL T/ADD ANTIFREEZE. EXTRA HOUR TRIP TIME.		
SWI. SECURE LOC. SDFN.		
CREW TRVL T/YARD.		
Report Number 11	Report Start Date 6/7/2024	Report End Date 6/7/2024
Operation		
CREW TRVL T/LOC.		
PJSM. SICP-550, SITP-NA, SIICP-0, SIBHP-0. BDW 20 MINUTES.		
CONT TOH W/3-7/8 JNK MILL F/4650'. NOTE: KILL WELL W/15 BBLS FW BEFORE PULLING T/SURFACE.		
M/U 2-3/8" PROD BHA, DRIFT & TIH 2-3/8" 4.7# J-55 TBG F/DERRICK. M/U TBG HANGER. TBG LANDED AS FOLLOWS: 1 - TBG HANGER 240 - JNTS 2-3/8" 4.7#, J-55, EUE TBG 1 - MARKER JNT, 2' x 2-3/8" 1 - JNT 2-3/8" 4.7#, J-55, EUE TBG 1 - SN (1.78" ID) 1 - EXPENDABLE CHECK SN @ 6587.24', EOT @ 7589.19'		
R/D WORK FLOOR & TBG HANDLING EQUIP. N/D BOP. N/U WH & TREE.		
PUMP 5 BBL FW PAD. DROP BALL & PRTS TBG T/500 PSI W/AIR, OK. PUMP OFF CHECK W/1150 PSI. CONT CIRC UNTIL CERTAIN CHECK GONE.		
R/D RIG & EQUIP. STACK RIG & MOST EQUIP ON ADJACENT LOC. HAND WELL OVER T/IDEAL WELL TESTERS. FINAL RIG REPORT.		



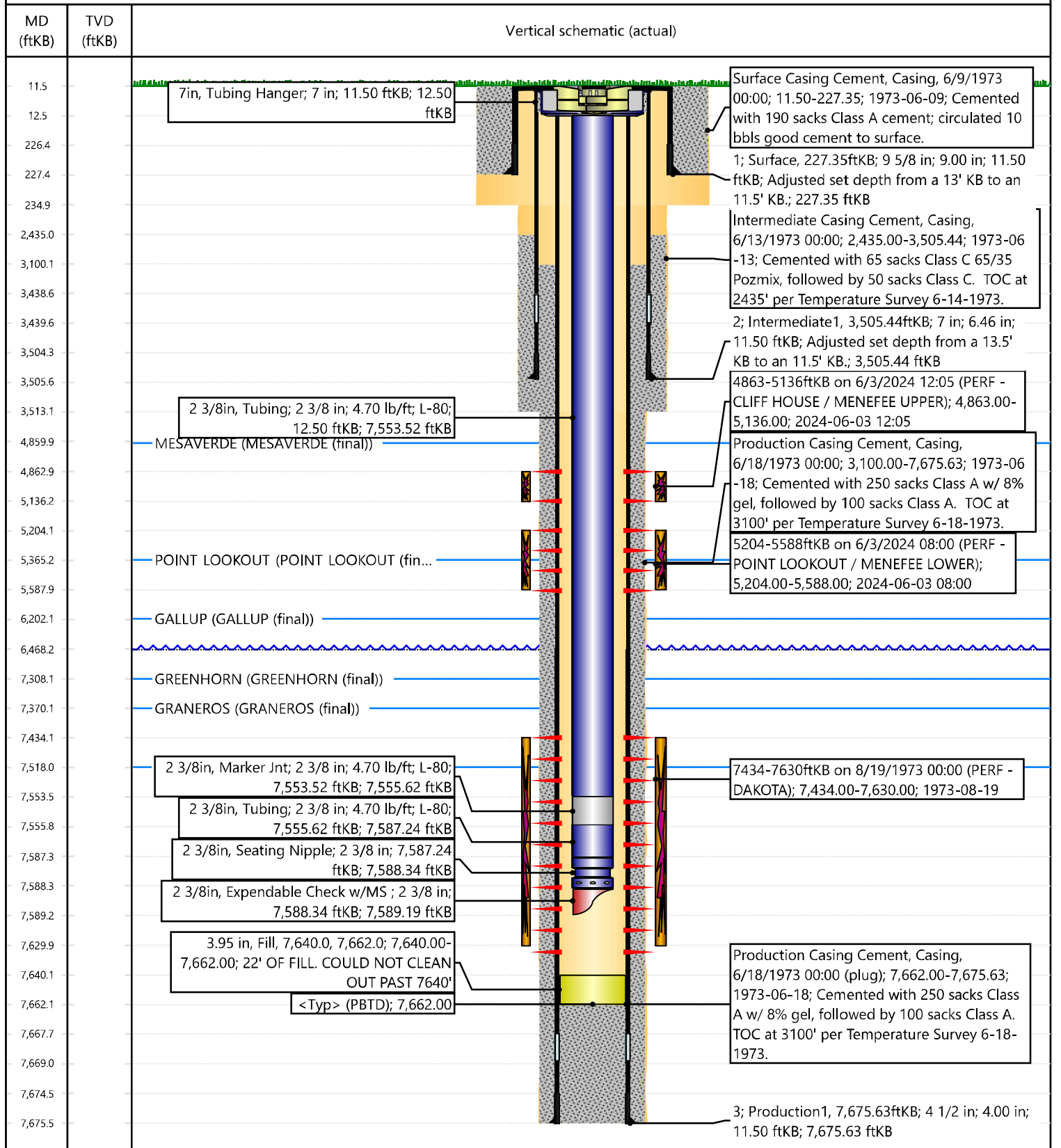


## Current Schematic - Version 3

Well Name: SAN JUAN 28-6 UNIT #182

API / UWI 3003920618	Surface Legal Location 012-027N-006W-M	Field Name BASIN DAKOTA (PRORATED GAS)	Route 1312	State/Province NEW MEXICO	Well Configuration Type VERTICAL
Ground Elevation (ft) 6,466.00	Original KB/RT Elevation (ft) 6,477.50	Tubing Hanger Elevation (ft)	RKB to GL (ft) 11.50	KB-Casing Flange Distance (ft)	KB-Tubing Hanger Distance (ft)

## Original Hole [VERTICAL]





Cheryl Weston

---

From: blm-afmss-notifications@blm.gov  
Sent: Tuesday, June 18, 2024 5:04 PM  
To: Cheryl Weston  
Subject: [EXTERNAL] Well Name: SAN JUAN 28-6 UNIT, Well Number: 182, Notification of Well Completion Acceptance

**CAUTION:** External sender. DO NOT open links or attachments from UNKNOWN senders.

## The Bureau of Land Management

### Notice of Acceptance for Well Completion Report

- Operator Name: **HILCORP ENERGY COMPANY**
- Well Name: **SAN JUAN 28-6 UNIT**
- Well Number: **182**
- US Well Number: **3003920618**
- Well Completion Report Id: **WCR2024061892055**

This notification is automatically generated. Please do not reply to this message as this account is not monitored.

UNITED STATES DEPARTMENT OF THE INTERIOR BUREAU OF LAND MANAGEMENT						FORM APPROVED OMB No. 1004-0137 Expires: July 31, 2018				
WELL COMPLETION OR RECOMPLETION REPORT AND LOG						5. Lease Serial No. <b>NMSF079363</b>				
1a. Type of Well <input type="checkbox"/> Oil Well <input checked="" type="checkbox"/> Gas Well <input type="checkbox"/> Dry <input type="checkbox"/> Other						6. If Indian, Allottee or Tribe Name				
b. Type of Completion: <input type="checkbox"/> New Well <input type="checkbox"/> Work Over <input type="checkbox"/> Deepen <input type="checkbox"/> Plug Back <input type="checkbox"/> Diff. Resvr.,						7. Unit or CA Agreement Name and No.				
Other: <b>RECOMPLETE</b>						8. Lease Name and Well No. <b>San Juan 28-6 Unit 182</b>				
2. Name of Operator <b>Hilcorp Energy Company</b>			3. Address <b>382 Rd 3100, Aztec NM 87410</b>			3a. Phone No. (include area code) <b>(505) 333-1700</b>			10. Field and Pool or Exploratory <b>Blanco Mesaverde</b>	
4. Location of Well (Report location clearly and in accordance with Federal requirements)*  At surface <b>Unit M (SWSW), 990' FSL &amp; 1180' FWL</b>  At top prod. Interval reported below <b>Same as above</b>  At total depth <b>Same as above</b>						11. Sec., T., R., M., on Block and Survey or Area <b>Sec. 12, T27N, R06W</b>			12. County or Parish <b>Rio Arriba</b>	
14. Date Spudded <b>6/8/1973</b>		15. Date T.D. Reached <b>6/17/1973</b>		16. Date Completed <input type="checkbox"/> D & A <input checked="" type="checkbox"/> Ready to Prod. <b>6/8/2024</b>		17. Elevations (DF, RKB, RT, GL)* <b>6,466'</b>				
18. Total Depth: <b>7,676'</b>		19. Plug Back T.D.: <b>7,640'</b>		20. Depth Bridge Plug Set: MD TVD		22. Was well cored? <input checked="" type="checkbox"/> No <input type="checkbox"/> Yes (Submit analysis) Was DST run? <input checked="" type="checkbox"/> No <input type="checkbox"/> Yes (Submit report) Directional Survey? <input checked="" type="checkbox"/> No <input type="checkbox"/> Yes (Submit copy)				
21. Type Electric & Other Mechanical Logs Run (Submit copy of each) <b>CBL</b>										
23. Casing and Liner Record (Report all strings set in well)										
Hole Size	Size/Grade	Wt. (#/ft.)	Top (MD)	Bottom (MD)	Stage Cementer Depth	No. of Sk. & Type of Cement	Slurry Vol. (BBL)	Cement top*	Amount Pulled	
13 3/4"	9 5/8" K-55	32#	0	229'	n/a	225 cf				
8 3/4"	7" K-55	20#	0	3,507'	n/a	231 cf				
6 1/4"	4 1/2" K-55	11.6#, 10.5#		7,676'	n/a	639 cf				
24. Tubing Record										
Size	Depth Set (MD)	Packer Depth (MD)	Size	Depth Set (MD)	Packer Depth (MD)	Size	Depth Set (MD)	Packer Depth (MD)		
2 3/8"	7,589'									
25. Producing Intervals					26. Perforation Record					
Formation		Top	Bottom	Perforated Interval		Size	No. Holes	Perf. Status		
A) Cliffhouse/Menefee		4,863'	5,136'	1 SPF		0.33	22	open		
B) Point Lookout		5,204'	5,588'	1 SPF		0.33	23	open		
C)										
D)										
TOTAL							45			
27. Acid, Fracture, Treatment, Cement Squeeze, etc.										
Depth Interval		Amount and Type of Material								
4863-5136		BDW w/water & 500 gal 15% HCl. Foam frac w/ith 125,264# 20/40 sand, 43,428 gal slickwater & 1.44M SCF N2 70 Q								
5204-5588		BDW w/water & 500 gal 15% HCl. Foam frac w/ith 125,178# 20/40 sand, 48,090 gal slickwater & 1.62M SCF N2 70 Q								
-										
28. Production - Interval A										
Date First Produced	Test Date	Hours Tested	Test Production	Oil BBL	Gas MCF	Water BBL	Oil Gravity Corr. API	Gas Gravity	Production Method	
6/8/2024	6/8/2024	4	➡	0	87	0	n/a	n/a	Flowing	
Choke Size	Tbg. Press. Flwg.	Csg. Press.	24 Hr. Rate	Oil BBL	Gas MCF	Water BBL	Gas/Oil Ratio	Well Status		
24/64"	280 PSI	250 PSI	➡	0	87	0	n/a	Producing		
28a. Production - Interval B										
Date First Produced	Test Date	Hours Tested	Test Production	Oil BBL	Gas MCF	Water BBL	Oil Gravity Corr. API	Gas Gravity	Production Method	
			➡							
Choke Size	Tbg. Press. Flwg. SI	Csg. Press.	24 Hr. Rate	Oil BBL	Gas MCF	Water BBL	Gas/Oil Ratio	Well Status		
			➡							

\*(See instructions and spaces for additional data on page 2)

## 28b. Production - Interval C

Date First Produced	Test Date	Hours Tested	Test Production	Oil BBL	Gas MCF	Water BBL	Oil Gravity Corr. API	Gas Gravity	Production Method
			➡						
Choke Size	Tbg. Press. Flwg. SI	Csg. Press.	24 Hr. Rate	Oil BBL	Gas MCF	Water BBL	Gas/Oil Ratio	Well Status	
			➡						

## 28c. Production - Interval D

Date First Produced	Test Date	Hours Tested	Test Production	Oil BBL	Gas MCF	Water BBL	Oil Gravity Corr. API	Gas Gravity	Production Method
			➡						
Choke Size	Tbg. Press. Flwg. SI	Csg. Press.	24 Hr. Rate	Oil BBL	Gas MCF	Water BBL	Gas/Oil Ratio	Well Status	
			➡						

29. Disposition of Gas (Solid, used for fuel, vented, etc.)

Sold

## 30. Summary of Porous Zones (Include Aquifers):

Show all important zones of porosity and contents thereof: Cored intervals and all drill-stem test, including depth interval tested, cushion used, time tool open, flowing and shut-in pressures and recoveries.

## 31. Formation (Log) Markers

Formation	Top	Bottom	Descriptions, Contents, etc.	Name	Top
					Meas. Depth
Ojo Alamo			White, cr-gr ss	Ojo Alamo	
Kirtland			Gry sh interbedded w/tight, gry, fine-gr ss.	Kirtland	
Fruitland			Dk gry-gry carb sh, coal, grn silts, light-med gry, tight, fine gr ss.	Fruitland	
Pictured Cliffs			Bn-Gry, fine grn, tight ss.	Pictured Cliffs	
Lewis			Shale w/ siltstone stingers	Lewis	
Huerfanito Bentonite			White, waxy chalky bentonite	Huerfanito Bentonite	
Chacra		4860'	Gry fn grn silty, glauconitic sd stone w/ drk gry shale	Chacra	
Cliff House	4,860'		Light gry, med-fine gr ss, carb sh & coal	Cliff House	4,860'
Menefee		5365'	Med-dark gry, fine gr ss, carb sh & coal	Menefee	
Point Lookout	5,365'	6202'	Med-light gry, very fine gr ss w/ frequent sh breaks in lower part of formation	Point Lookout	5,365'
Mancos	6,202'		Dark gry carb sh.	Mancos	6,202'
Gallup		7308'	Lt. gry to brn calc carb micac glauc silts & very fine gry gry ss w/ irreg. interbed sh.	Gallup	
Greenhorn	7,308'	7370'	Highly calc gry sh w/ thin lmst.	Greenhorn	7,308'
Graneros	7,370'	7518'	Dk gry shale, fossil & carb w/ pyrite incl.	Graneros	7,370'
Dakota			Lt to dark gry foss carb sl calc slitty ss w/ pyrite incl thin sh bands cly Y shale breaks	Dakota	
Morrison	7,518'		Interbed grn, brn & red waxy sh & fine to coard grn ss	Morrison	7,518'

32. Additional remarks (include plugging procedure):

This well is currently producing as a MV/DK commingle per DHC-5387. MV P/A NMNM78412A.

33. Indicate which items have been attached by placing a check in the appropriate boxes:

- |   |  |                                     |   |
|---|--|-------------------------------------|---|
| <input type="checkbox"/> Electrical/Mechanical Logs (1 full set req'd.)     | <input type="checkbox"/> Geologic Report | <input type="checkbox"/> DST Report | <input type="checkbox"/> Directional Survey |
| <input type="checkbox"/> Sundry Notice for plugging and cement verification | <input type="checkbox"/> Core Analysis   | <input type="checkbox"/> Other:     |   |

34. I hereby certify that the foregoing and attached information is complete and correct as determined from all available records (see attached instructions)\*

Name (please print)	<u>Cherylene Weston</u>	Title	<u>Operations/Regulatory Technician</u>
Signature	<u>Cherylene Weston</u>	Date	<u>6/18/2024</u>

Title 18 U.S.C. Section 1001 and Title 43 U.S.C. Section 1212, make it a crime for any person knowingly and willfully to make to any department or agency of the United States any false, fictitious or fraudulent statements or representations as to any matter within its jurisdiction.

**District I**  
1625 N. French Dr., Hobbs, NM 88240  
Phone:(575) 393-6161 Fax:(575) 393-0720  
**District II**  
811 S. First St., Artesia, NM 88210  
Phone:(575) 748-1283 Fax:(575) 748-9720  
**District III**  
1000 Rio Brazos Rd., Aztec, NM 87410  
Phone:(505) 334-6178 Fax:(505) 334-6170  
**District IV**  
1220 S. St Francis Dr., Santa Fe, NM 87505  
Phone:(505) 476-3470 Fax:(505) 476-3462

**State of New Mexico**  
**Energy, Minerals and Natural Resources**  
**Oil Conservation Division**  
**1220 S. St Francis Dr.**  
**Santa Fe, NM 87505**

ACKNOWLEDGMENTS  
  
Action 355960

ACKNOWLEDGMENTS

Operator: HILCORP ENERGY COMPANY 1111 Travis Street Houston, TX 77002	OGRID: 372171
	Action Number: 355960
	Action Type: [C-104] Completion Packet (C-104C)

ACKNOWLEDGMENTS

<input checked="" type="checkbox"/>	I hereby certify that the required Water Use Report has been, or will be, submitted for this wells completion.
<input checked="" type="checkbox"/>	I hereby certify that the required FracFocus disclosure has been, or will be, submitted for this wells completion.

**District I**  
1625 N. French Dr., Hobbs, NM 88240  
Phone:(575) 393-6161 Fax:(575) 393-0720

**District II**  
811 S. First St., Artesia, NM 88210  
Phone:(575) 748-1283 Fax:(575) 748-9720

**District III**  
1000 Rio Brazos Rd., Aztec, NM 87410  
Phone:(505) 334-6178 Fax:(505) 334-6170

**District IV**  
1220 S. St Francis Dr., Santa Fe, NM 87505  
Phone:(505) 476-3470 Fax:(505) 476-3462

**State of New Mexico**  
**Energy, Minerals and Natural Resources**  
**Oil Conservation Division**  
**1220 S. St Francis Dr.**  
**Santa Fe, NM 87505**

CONDITIONS

Action 355960

CONDITIONS

Operator: HILCORP ENERGY COMPANY 1111 Travis Street Houston, TX 77002	OGRID: 372171
	Action Number: 355960
	Action Type: [C-104] Completion Packet (C-104C)

CONDITIONS

Created By	Condition	Condition Date
smcgrath	None	6/21/2024