

Submit a Copy To Appropriate District
Office
District I – (575) 393-6161
1625 N. French Dr., Hobbs, NM 88240
District II – (575) 748-1283
811 S. First St., Artesia, NM 88210
District III – (505) 334-6178
1000 Rio Brazos Rd., Aztec, NM 87410
District IV – (505) 476-3460
1220 S. St. Francis Dr., Santa Fe, NM
87505

State of New Mexico
Energy, Minerals and Natural Resources

Form C-103
Revised July 18, 2013

OIL CONSERVATION DIVISION
1220 South St. Francis Dr.
Santa Fe, NM 87505

SUNDRY NOTICES AND REPORTS ON WELLS (DO NOT USE THIS FORM FOR PROPOSALS TO DRILL OR TO DEEPEN OR PLUG BACK TO A DIFFERENT RESERVOIR. USE "APPLICATION FOR PERMIT" (FORM C-101) FOR SUCH PROPOSALS.)		WELL API NO. 30-025-27670
1. Type of Well: Oil Well <input checked="" type="checkbox"/> Gas Well <input type="checkbox"/> Other <input type="checkbox"/>		5. Indicate Type of Lease STATE <input checked="" type="checkbox"/> FEE <input type="checkbox"/>
2. Name of Operator El Ran Inc.		6. State Oil & Gas Lease No. B-2894
3. Address of Operator PO Box 911, Lubbock, TX 79408		7. Lease Name or Unit Agreement Name Ruth State
4. Well Location Unit Letter <u>M</u> : <u>990</u> feet from the <u>South</u> line and <u>990</u> feet from the <u>West</u> line Section <u>20</u> Township <u>16S</u> Range <u>36E</u> NMPM County <u>Lea</u>		8. Well Number <u>001</u>
11. Elevation (Show whether DR, RKB, RT, GR, etc.) GL 3929		9. OGRID Number 7109
		10. Pool name or Wildcat Wolfcamp

12. Check Appropriate Box to Indicate Nature of Notice, Report or Other Data

NOTICE OF INTENTION TO:		SUBSEQUENT REPORT OF:	
PERFORM REMEDIAL WORK <input type="checkbox"/>	PLUG AND ABANDON <input type="checkbox"/>	REMEDIAL WORK <input type="checkbox"/>	ALTERING CASING <input type="checkbox"/>
TEMPORARILY ABANDON <input type="checkbox"/>	CHANGE PLANS <input type="checkbox"/>	COMMENCE DRILLING OPNS. <input type="checkbox"/>	P AND A <input checked="" type="checkbox"/>
PULL OR ALTER CASING <input type="checkbox"/>	MULTIPLE COMPL <input type="checkbox"/>	CASING/CEMENT JOB <input type="checkbox"/>	
DOWNHOLE COMMINGLE <input type="checkbox"/>			
CLOSED-LOOP SYSTEM <input type="checkbox"/>			
OTHER: <input type="checkbox"/>		OTHER: <input type="checkbox"/>	

13. Describe proposed or completed operations. (Clearly state all pertinent details, and give pertinent dates, including estimated date of starting any proposed work). SEE RULE 19.15.7.14 NMAC. For Multiple Completions: Attach wellbore diagram of proposed completion or recompletion.

XTO Energy Inc., has P&A'd the above mentioned well and respectfully submits the attached Subsequent P&A summary report and WBD on behalf of operator El Ran Inc. CBL was submitted separately.

Spud Date:

04/18/1983

Rig Release Date:

I hereby certify that the information above is true and complete to the best of my knowledge and belief.

SIGNATURE Sherry Morrow TITLE Regulatory Analyst DATE 06/17/2024

Type or print name Sherry Morrow E-mail address: sherry.morrow@exxonmobil.com PHONE: 432-967-7046

For State Use Only

APPROVED BY: _____ TITLE _____ DATE _____

Conditions of Approval (if any):

Ruth State #001
API 30-025-27670
P&A Summary Report

4/16/24: MIRU. Set POSI stop High and low points Bd well. Pump 50 bbls 10# KW fluid for WC. Rmv 3K WH flange. NU 5K 7-1/16 BOPE. PT BOPE 2800 psig high/250 psig low. Gd test. MIRU WLU. RIH w 4.62" GR&JB to 1610 tagged up on something. POH. RDMO WLU.

4/17/24: BD KW. BH 100 bbls 10# brine @ 1.5 bpm down csg. Went on vacuum. Dug out cellar to find surface csg valves. Added a valve and 90 to one side that we can bleed off and monitor surface csg. Received pipe racks, bolsters, catwalk and 2-3/8 L80 tbg. Put first run of tbg on pipe racks and tallied. Made up BHA (tricone bit, scraper and x-over) attempted to TIH and kept hitting solid ~27' in. Removed the scraper and attempted to go in with just the bit and hit in the same spot. Removed bit and TIH 1 full jnt and a 6' sub and made it through the tight spot. LD down jnt and sub. Secured well.

4/18/24: RIH PU and TIH 68 jnts 2-3/8 tbg to 2141' and stacked out. Attempted to work through and were unable to. Hit tight spots @ 27', 283', 535', 598', 1,614', 1,889', 2,141'. Were able to work tbg through all spots other than 2,141. POOHTOH and std back 68 jnts. OTHER RD work floor and dug out around csg. RIH TIH 68 jnts 2-3/8 tbg to 2141' Came up 5'. BULL BH 100 bbls FW down tbg to see if maybe there is a salt bridge that we cannot get through. POOH TOH LD 68 jnts 2-3/8 L80 tbg.

4/19/24: Replace 2" ball valves on intermediate production csgs. BULL BH 180 bbls 10# brine down csg. Well went on a short vacuum. Monitored pressures. BH 100 bbls 10# brine down csg. Monitor pressures. BH 260 bbls 10# brine down csg. Well went on vacuum. Monitor pressures.

4/20/24: Prod csg and Int 105 psi surf 0 psi Bleed down csg to Opsi Intermediate bled off with prod csg. All gas/no fluid. SI and monitor. 20psi afer 1 hour. cont to monitor.

4/21/24: Prod csg and Int 40 psi surf 0 psi Bleed down csg to 0 psi Intermediate bled off with prod csg. All gas/no fluid. Monitor well for fluid flow. No fluid after 4 hours. Trace gas.

4/22/24: ND tbg head Spear csg and LD 1 jt NU 3K tbg head and torque up NU BOPE TIH w/ 6.125 impression block tag top of csg 5-1/2" csg.

4/23/24: Bd & KW ND Tbg head RIH TIH w/ 1 jt and 5-1/2 collar screw on csg. POOH TOH LD jt and connections NU 3K tbg Head ND 3K tbg head NU 5K 7-1/16 tbg head.

4/24/24: Bd & KW pump 240 bbls 10# brine ND. Monitor well for 30 minutes ND Tbg head. RIH, TIH w/ 1 jt 5-1/2 screw on to top of csg in hole PUH 30 pts set slips in B section cut csg NU 3K tbg head and 5K 7-1/16 BOPE. RIH, TIH w/ 4-1/2 bit and scraper.

4/25/24: PU 2 jts 2-3/8 L-80 tbg tag tight spot in csg @1612' RU swivel rotate badly torquing up. Decision made to TOH PU impression block TIH tag tight spot TOH sent Pics to group text. SD due to high winds. POOH TOH w/ 25 stands 2-3/8" tbg and 4-1/2" bit RIH TIH w/ 4.62 impression block POOHTOH w/ impression block RIH, TIH w/ tapered mill. MILL. RU swivel rotate.

4/26-/24: Set POSI stop FT BOPE. BULL BD & KW pump 100 bbls #10 RIH, TIH w/4.62" impression block. POOH TOH w/4.62" impression block TIH w/ 1.25" grapple on 4-11/16 OS tag fish string weight attempt to latch on w/ no success POOH TOH w/ OS and inspect SDFWE due to high winds.

4/29/24: BD & KW pump 100 bbls #10. TIH w/1.50 grapple attempt to latch on w/ no success. TOH w/4-11/16 OS w/ 1.50 grapple and inspect tools. TIH w/ 1.625" grapple on 4-11/16 OS tag fish string weight 8pts latch on pull 47 pts over at 5 pts increments rods parted. TOH w/ 2 stands and SDFN due to rig broke down.

4/30/24: Cont TOH w/ 2-3/8 tbg and OS w/ rods RD tbg tIs. RU rod tIs TOH Ld 30 7/8" rods. TIH w/ 4.60 Impression block to 2362. TOH w/ 75 jts 2-3/8" tbg and Imp block. TIH w/4-11/16 OS w/ 1.625 grapple on 73 jts 2-3/8" L-80 tbg SD @2302' will tg TOF in am.

5/1/24: Cont TIH w/ 4-11/16 OS latch up on fish @ 2362' Pull up to 80 pts on tbg decision made to pump fluid down csg then TOH w/ tbg and rods Pump 100 bbls 10# down csg to flush tbg and rods Back off 7/8 rods TOH w/ tbg and rods LD rods Move 2-3/8 L-80 tbg off pipe racks set in 2-7/8" PH-6 WS RIH tally tbg PU TIH w/4.6 Impression block on 2-7/8" PH-6 WS.

5/2/24: Cont TIH w/4.60 impression block Tag TOF @ 2443' TOH w/ block and inspect Original Hole TIH w/ 4-11/16 OS on 83 jts 2-7/8" PH-6 WS possible tag fish @2574' went down to 2594' PUH had 1-1/2 pts over string weight TOH w/OS and PH-6 2-7/8" WS + rods RD tbg tIs RU Rod TIs TOH Ld 38 7/8 rods 950'

5/3/24: Set and test POSI stop TIH w/4.6 OD IB on 108 jts PH-6 2-7/8" tag fish @3368 TOH w/impression block inspect block Set in more 2-7/8" PH-6 pipe on racks and tallied TIH w/ 4-11/16 OS and 1.625 grapple on 40 jts and SD

5/6/24: D due to high winds

5/7/24: Bullhead 60 bbls down tbg for WC @ 2.5 BPM 0 psi TIH w/ 4-11/16 OS w/ 1.625 grapple and 108 jts PH-6 2-7/8 WS. FISH String weight @ 30 pts Tag, latch on and work fish @ 3368' pull up @ 10 pt increments to 60 pts over rods not parting decision to backoff rods. Attempt backoff string weight same TOH w/ fish LD 3 7/8" rods and SDFN TOF is 3443'.

5/8/24: Set and test POSI stop TIH w/ 4.6 OD IB tag fish @ 3417' 1st run TOH w/impression block and inspect TIH w/ 4.6 IB 2nd run TOH w/IB and inspect imprint same print as #1 secure well and SDFN.

5/9/24: Set and test POSI stop TIH w/ 4.6 OD IB tag fish @ 3417' 1st run TOH w/impression block and inspect TIH w/ 4.6 IB 2nd run TOH w/IB and inspect imprint same print as #1 secure well and SDFN.

5/10/24: TIH w/ 4.6 IB on 110 jts 2-7/8" PH-6 WS string weight 30 pts tag @ 3419' set 10 pts TOH w/ IB and inspect found 2-3/8 imprint on block FISH TIH w/ 4-11/16 OS w/ 2.375 grapple ,3-3/4" BS w/ 1" ID ,3-3/4" jars ,XO, (6) 3-1/2" OD DC's ,33/4 OD accelerator, 102 jts PH-6 2-7/8" WS string weight 30 pts , tag fish @3419' latch on pull up 30 pts over till jars go off Cont jarring

5/11/24: KW. pump 100 Bbls 10# BW FISH Continued Jarring. Jar 4x @ 35k Over. Fish came free. SW 90k w/ 6k over drag. LD 5 jts CWI SD FTW.

5/13/24: Pump 10# KW for WC PUH to TOF LD 3-3/4" Excelerator ,3-3/4" , jars , 3-3/4" BS and 4-11/16 OS Cont TOH w/37- 2-3/8 tbg switch to rod TIs TOH w/35-7/8" and 54- 3/4 rods

5/14/24: Pump 10# KW for WC Cont TOH w/116- 2-3/8 jts tbg switch to rod TIs TOH w/7--7/8" and 100-3/4 rods today Secure well and SDFN.

5/15/24: Cont TOH w/64- 2-3/8 jts tbg switch to rod TIs TOH w/3--7/8" rods on outside of tbg and 77-3/4 rods today Secure well and SDFN.

5/16/24: RU WLU test lubricator 500 psi RIH w/ 4.50 GR&JB to 10,188' tagged up attempt to go thru w/ no success POH RIH set 5-1/2" (ID 4.25) CIBP @ 10185' POH Pumped 236 bbls 10# brine to fill 5-1/2 csg RIH w/ CBL PUH wait 30 minutes for storm to move out got worse SD due to high winds, hail and lightning Secure well and SDFN.

5/17/24: d well and load w/ 14 bbls brine to run CBL RU WL RIH w/ CBL logged from 10,185' to surf and RD RU WLU RIH w/ 3-1/2" OD dump bailer ID 2.75' made 1st run to 10185' attempt to RIH w/ #2nd run tagged tight spot @ 4330' attempt to work thru w/ no success POH dump cmt and Ld bailer RD Ranger WLU Secure well and SDFN.

5/18/24: TIH w/ 3-1/2 DC and 2-7/8" PH-6. TOH Ld PH-6 tbg and 3-1/2 collars TIH 4-1/2 bit, and 2-3/8" tbg tallied TIH to 4 Secure well and SDFN.

5/19/24: Continued TIH w/ 4-1/2-bit, bit sub & 2-3/8 L-80 EUE tbg. PU 70 jts Didn't tag or see anything @ 4330' cont. TIH. Rack & tally 104 jts 2-3/8 L-80 EUE. Continue TIH w/ 4-1/2 Bit & Tbg. Tag @ 10,146' w/ 2' out on jt # 319 lay down 2 jts. Pump 18 Bbls #10 BW down tbg. Break circulation. Tbg clear. CWI SDFN.

5/20/24: Pump spcer of salt jel mud from,10146' to 8600' Original Hole. CMT TOH to EOT @ 9612'. spot 100 sks to 8800' POOH to EOT @ 860' Circulate clean 154 Bbls Down tbg up csg. POOH to EOT @ 7802' Rig broke down. pump another 120 Bbls down tubing up csg to to ensure cmt out. CWI SDFN.

5/21/24: TIH w/ 2-3/8 tbg tag Cmt @ 8821' TOH w/ 91 stands 2-3/8 8rd WS SBID, Ld 94 jts TIH w/ pkr and 2 jts +10' sub set pkr RU WL RIH perf csg @ 6400' POH RD Remove 10' sub cont TIH w/ 57 jts and SD Secure well and SDFN.

5/22/24: TIH w/ pkr + 2-3/8 tbg set pkr 5807' attempt EIR @ 6400' w/ no success. Rlse pkr. **Per NMOCD Kerry Fortner Drop down 50' below perfs and Spot 35 sxs class H cmt @ 6454-6170'** TOH w/ pkr Ld 20 jts circ well w/ 183 bbls down tbg and up csg Cont Ld 27 jts RU WLU test Lub RIH tag cmt @ 6200' then PUH and perf csg @ 4270' POH RD WLU Set pkr @ 4176' EIR @ 2.0 BPM 0 psi

5/23/24: TIH w/ pkr + 2-3/8 tbg 4956' spot 67 sxs class C cmt CTOC @4270' PUH 20 stands flush tbg set Pkr @ 3690 pump 135 bbls down tbg&up 8- 5/8 annulus to clear perf holes @4270 PUH WOC **TIH tag Cmt @4333' 63' low Ok'd by OCD Kerry Fortner.** TOH w/pkr set @ 3471'_Sqz cmt @4270'- 3730 ' w/ 125 sxs class C cmt 18.5 mix, 1.32 Yld ,14.8 # Disp w/ 18.5 bbls.

5/24/24: TIH w/ pkr + 2-3/8 tbg tag Cmt @ 3668' w/115 jts **per OCD Ok to proceed to next step** TOH Ld 63 jts set Pkr @ 1600' RU WL RIH perf csg @ 3300' POH RD WL EIR @ 2.0 BPM 0 psi Sqz cmt @3300-1800 350 sxs class C cmt 52.5 mix, 1.32 Yld ,14.8 # Disp w/ 11 bbls SD WOC RU WL RIH tag Cmt @ 1760' **Per OCD Kerry Fortner Ok to PUH perf csg @ 450' POH RD** EIR 2.0 BPM @ 0 psi

5/28/24: TIH w/ pkr + 2-3/8 tbg set pkr pump dye start @ 24 bbls dye Circ to surf Sqz 113 sxs inside 5-1/2 and out 8-5/8 from 450' to surface class C cmt 16.9 mix ,1.32 Yld ,14.8 # cmt TOH Ld 1 jt and pkr RDMO WO and Equip and jet out GB. Susp rpts for P&A pending cut off WH & install DHM.

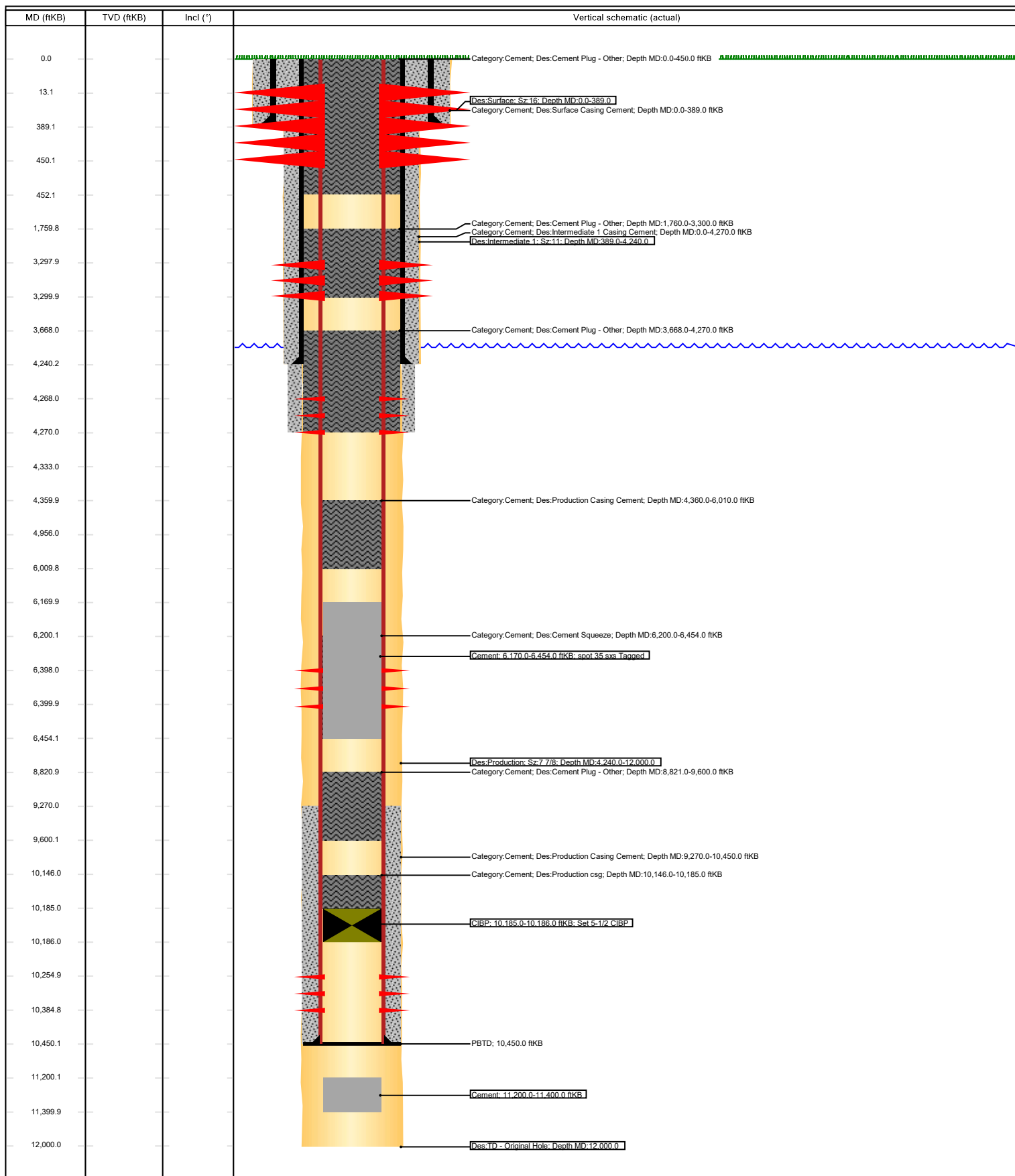
6/14/24: Cut off Wellhead and set DHM.



Schematic - Current Vertical

Well Name: Ruth State 001

API/UWI 3002527670	SAP Cost Center ID 1816601002	Permit Number	State/Province New Mexico	County Lea
Surface Location T16S-R36E-S20	Spud Date 8/3/1982 00:00	Original KB Elevation (ft) 3,939.10	Ground Elevation (ft) 3,939.10	KB-Ground Distance (ft) 0.00





District I
1625 N. French Dr., Hobbs, NM 88240
Phone:(575) 393-6161 Fax:(575) 393-0720
District II
811 S. First St., Artesia, NM 88210
Phone:(575) 748-1283 Fax:(575) 748-9720
District III
1000 Rio Brazos Rd., Aztec, NM 87410
Phone:(505) 334-6178 Fax:(505) 334-6170
District IV
1220 S. St Francis Dr., Santa Fe, NM 87505
Phone:(505) 476-3470 Fax:(505) 476-3462

State of New Mexico
Energy, Minerals and Natural Resources
Oil Conservation Division
1220 S. St Francis Dr.
Santa Fe, NM 87505

CONDITIONS

Action 354921

CONDITIONS

Operator: XTO ENERGY, INC 6401 Holiday Hill Road Midland, TX 79707	OGRID: 5380
	Action Number: 354921
	Action Type: [C-103] Sub. Plugging (C-103P)

CONDITIONS

Created By	Condition	Condition Date
loren.diede	None	6/24/2024