

District I

1625 N. French Dr., Hobbs, NM 88240
Phone:(575) 393-6161 Fax:(575) 393-0720

District II

811 S. First St., Artesia, NM 88210
Phone:(575) 748-1283 Fax:(575) 748-9720

District III

1000 Rio Brazos Rd., Aztec, NM 87410
Phone:(505) 334-6178 Fax:(505) 334-6170

District IV

1220 S. St Francis Dr., Santa Fe, NM 87505
Phone:(505) 476-3470 Fax:(505) 476-3462

State of New Mexico
Energy, Minerals and Natural Resources
Oil Conservation Division
1220 S. St Francis Dr.
Santa Fe, NM 87505

Form C-101
August 1, 2011

Permit 370213

APPLICATION FOR PERMIT TO DRILL, RE-ENTER, DEEPEN, PLUGBACK, OR ADD A ZONE

1. Operator Name and Address Franklin Mountain Energy 3, LLC 44 Cook Street Denver, CO 80206		2. OGRID Number 331595
		3. API Number 30-025-53251
4. Property Code 336100	5. Property Name FOXTAIL STATE COM	6. Well No. 804H

7. Surface Location

UL - Lot A	Section 8	Township 19S	Range 35E	Lot Idn A	Feet From 462	N/S Line N	Feet From 1033	E/W Line E	County Lea
---------------	--------------	-----------------	--------------	--------------	------------------	---------------	-------------------	---------------	---------------

8. Proposed Bottom Hole Location

UL - Lot A	Section 32	Township 18S	Range 35E	Lot Idn A	Feet From 100	N/S Line N	Feet From 360	E/W Line E	County Lea
---------------	---------------	-----------------	--------------	--------------	------------------	---------------	------------------	---------------	---------------

9. Pool Information

SCHARB;WOLFCAMP	55640
-----------------	-------

Additional Well Information

11. Work Type New Well	12. Well Type OIL	13. Cable/Rotary	14. Lease Type State	15. Ground Level Elevation 3847
16. Multiple N	17. Proposed Depth 22362	18. Formation Wolfcamp	19. Contractor	20. Spud Date 9/1/2024
Depth to Ground water		Distance from nearest fresh water well		Distance to nearest surface water

☒ We will be using a closed-loop system in lieu of lined pits

21. Proposed Casing and Cement Program

Type	Hole Size	Casing Size	Casing Weight/ft	Setting Depth	Sacks of Cement	Estimated TOC
Surf	17.5	13.375	54.5	1895	1454	0
Int1	12.25	9.625	40	7892	1731	0
Prod	8.75	7	32	11100	281	6892
Prod	8.75	5.5	20	22362	2811	11100

Casing/Cement Program: Additional Comments

--

22. Proposed Blowout Prevention Program

Type Double Ram	Working Pressure 10000	Test Pressure 5000	Manufacturer CACTUS
--------------------	---------------------------	-----------------------	------------------------

23. I hereby certify that the information given above is true and complete to the best of my knowledge and belief.
I further certify I have complied with 19.15.14.9 (A) NMAC ☒ and/or 19.15.14.9 (B) NMAC ☒ if applicable.

Signature:

Printed Name: Electronically filed by Rachael A Overbey

Title: Project Manager

Email Address: roverbey@fmellc.com

Date: 7/17/2024

Phone: 303-570-4057

OIL CONSERVATION DIVISION

Approved By: Paul F Kautz

Title: Geologist

Approved Date: 7/24/2024

Expiration Date: 7/24/2026

Conditions of Approval Attached

District I
1625 N. French Dr., Hobbs, NM 88240
Phone: (575) 393-6161 Fax: (575) 393-0720
District II
811 S. First St., Artesia, NM 88210
Phone: (575) 748-1283 Fax: (575) 748-9720
District III
1000 Rio Brazos Road, Aztec, NM 87410
Phone: (505) 334-6178 Fax: (505) 334-6170
District IV
1220 S. St. Francis Dr., Santa Fe, NM 87505
Phone: (505) 476-3460 Fax: (505) 476-3462

State of New Mexico
Energy, Minerals & Natural Resources Department
OIL CONSERVATION DIVISION
1220 South St. Francis Dr.
Santa Fe, NM 87505

Form C-102
Revised August 1, 2011
Submit one copy to appropriate
District Office

☐ AMENDED REPORT

WELL LOCATION AND ACREAGE DEDICATION PLAT

¹ API Number		² Pool Code 55640	³ Pool Name SCHARB; WOLFCAMP
⁴ Property Code	⁵ Property Name FOXTAIL STATE COM		⁶ Well Number 804H
⁷ OGRID No. 331595	⁸ Operator Name FRANKLIN MOUNTAIN ENERGY 3, LLC		⁹ Elevation 3847.9'

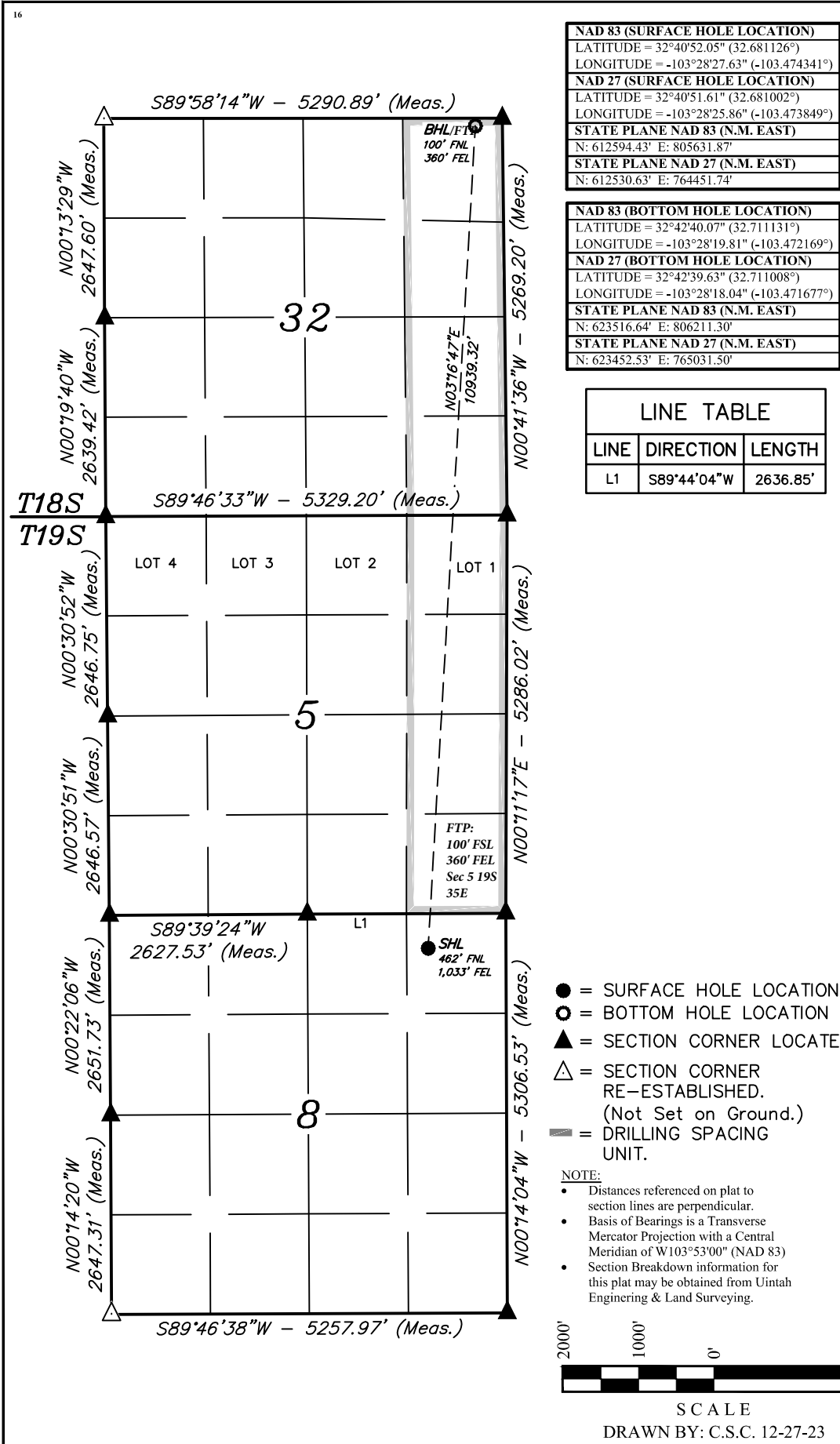
¹⁰ Surface Location

UL or lot no. A	Section 8	Township 19S	Range 35E	Lot Idn	Feet from the 462	North/South line NORTH	Feet from the 1033	East/West line EAST	County LEA
--------------------	--------------	-----------------	--------------	---------	----------------------	---------------------------	-----------------------	------------------------	---------------

¹¹ Bottom Hole Location If Different From Surface

UL or lot no. A	Section 32	Township 18S	Range 35E	Lot Idn	Feet from the 100	North/South line NORTH	Feet from the 360	East/West line EAST	County LEA
¹² Dedicated Acres 319.69		¹³ Joint or Infill		¹⁴ Consolidation Code		¹⁵ Order No.			

No allowable will be assigned to this completion until all interests have been consolidated or a non-standard unit has been approved by the division.



¹⁷ OPERATOR
CERTIFICATION
I hereby certify that the information contained herein is true and complete to the best of my knowledge and belief, and that this organization either owns a working interest or unleased mineral interest in the land including the proposed bottom hole location or has a right to drill this well at this location pursuant to a contract with an owner of such a mineral or working interest, or to a voluntary pooling agreement or a compulsory pooling order heretofore entered by the division.

Signature: *Rachael Overbey* Date: 1/17/24
Printed Name: Rachael Overbey
E-mail Address: roverbey@fmellc.com

¹⁸ SURVEYOR
CERTIFICATION
I hereby certify that the well location shown on this plat was plotted from field notes of actual surveys made by me or under my supervision, and that the same is true and correct to the best of my belief.

December 21, 2023
Date of Survey
Signature and Seal of Professional Surveyor:

Paul Buchele
23782
12-27-23
PROFESSIONAL SURVEYOR

Certificate Number:

District I
1625 N. French Dr., Hobbs, NM 88240
Phone:(575) 393-6161 Fax:(575) 393-0720
District II
811 S. First St., Artesia, NM 88210
Phone:(575) 748-1283 Fax:(575) 748-9720
District III
1000 Rio Brazos Rd., Aztec, NM 87410
Phone:(505) 334-6178 Fax:(505) 334-6170
District IV
1220 S. St Francis Dr., Santa Fe, NM 87505
Phone:(505) 476-3470 Fax:(505) 476-3462

State of New Mexico
Energy, Minerals and Natural Resources
Oil Conservation Division
1220 S. St Francis Dr.
Santa Fe, NM 87505

Form APD Conditions
Permit 370213

PERMIT CONDITIONS OF APPROVAL

Operator Name and Address: Franklin Mountain Energy 3, LLC [331595] 44 Cook Street Denver, CO 80206	API Number: 30-025-53251
	Well: FOXTAIL STATE COM #804H

OCD Reviewer	Condition
pkautz	Notify OCD 24 hours prior to casing & cement
pkautz	Will require a File As Drilled C-102 and a Directional Survey with the C-104
pkautz	Once the well is spud, to prevent ground water contamination through whole or partial conduits from the surface, the operator shall drill without interruption through the fresh water zone or zones and shall immediately set in cement the water protection string
pkautz	Oil base muds are not to be used until fresh water zones are cased and cemented providing isolation from the oil or diesel. This includes synthetic oils. Oil based mud, drilling fluids and solids must be contained in a steel closed loop system
pkautz	Cement is required to circulate on both surface and intermediate1 strings of casing
pkautz	If cement does not circulate on any string, a CBL is required for that string of casing
pkautz	The Operator is to notify NMOCD by sundry (Form C-103) within ten (10) days of the well being spud



Foxtail State Com 804H

1. Geologic name of surface location: Permian
2. Estimated tops of important geological markers:

Formations	PROG SS	PROG TVD	Picked TVD	delta	Potential/Issues
Cenozoic Alluvium (surface)		3,876'	3,876'	0	Sand/Gravels/Unconsolidated
Rustler	2,032'	1,844'			Carbonates
Salado	1,720'	2,156'			Salt, Carbonate & Clastics
Base Salt	712'	3,164'			Shaley Carbonate & Shale
Yates	451'	3,425'			Anhydrite/Shale
Seven Rivers	1'	3,875'			Interbedded Shale/Carbonate
Queen	-832'	4,708'			Sandstone & Dolomite & Anhydrite
Delaware Mtn Group	-2,372'	6,248'			Sandstone/Carb/Shale - oil/gas/water
Bone Spring Lime	-3,865'	7,741'			Shale/Carbonates - oil/gas
First Bone Spring Sand	-5,473'	9,349'			Sandstone - oil/gas/water
Second Bone Spring Carbonate	-5,749'	9,625'			Shale/Carbonates - oil/gas
Second Bone Spring Sand	-5,975'	9,851'			Sandstone - oil/gas/water
Third Bone Spring Carbonate	-6,406'	10,282'			Shale/Carbonates - oil/gas
Third Bone Spring Sand	-6,500'	10,376'			Sandstone - oil/gas/water
Wolfcamp	-6,626'	10,502'			Overpressure Shale/Sand- oil/gas
Wolfcamp B	-7,137'	11,013'			Overpressure Shale - oil/gas
HZ Target	-7,747'	11,623'			Overpressure Shale - oil/gas
Base Wolfcamp	-8,010'	11,886'			Overpressure Shale - oil/gas

3. Estimated depth of anticipated fresh water, oil or gas:

Upper Permian Sands	0- 400'	Fresh Water
Delaware Sands	6,248'	Oil
1 st Bone Spring Sand	9,349'	Oil
2 nd Bone Spring Carb	9,625'	Oil
2 nd Bone Spring Sand	9,851'	Oil
3 rd Bone Spring Sand	10,376'	Oil
Wolfcamp	10,502'	Oil
Wolfcamp B	11,013'	Oil

No other formations are expected to give up oil, gas or fresh water in measurable quantities. Surface freshwater sands will be protected by setting 13-3/8" casing at 1,895' and circulating cement back to surface.

4. Casing Program:

All casing strings will be run new.



Casing string	Weight	Grade	Burst	Collapse	Tension	Conn	Length	API design factor			
								Burst	Collapse	Tension	Coupling
Surface 13 3/8"	54.5	J-55	2730	1130	853	BTC 909	1,895	1.02	1.15	4.20	4.47
Intermediate 9 5/8"	40	HCL-80	7430	4230	916	BTC 1042	7,892	1.33	1.15	2.20	2.51
Production 7"	32	HCP-110	12460	10760	1025	CDC-HTQ 1053	11,100	1.71	2.07	2.25	2.31
Production 5 1/2"	20	HCP-110	12640	12200	641	CDC-HTQ 667	11,262 11,623	1.15	2.31	1.97	2.05 2.01

Tapered production string will be ran with a X-over installed at the KOP of 11,100'.

Cementing Program:

Cementing Stage tool can be placed in the 1st Intermediate string as a contingency to ensure required TOC to surface.

To increase efficiency of drilling operations and minimize disturbance of the area the batch-drilling approach will be used.

Off-line cementing may be utilized for Surface, Intermediate, and Production strings to further optimization of drilling process and reduction of disturbance.

String Type	Hole Size	Casing		Sacks	Type of cmt	Lead			Sacks	Type of cmt	Tail			TOC	Excess
		Size	Setting Depth			Yield ft3/sk	Water gal/sk	TOC ft			Yield ft3/sk	Water gal/sk	TOC		
Surf	17.5	13.375	1,895	1013	85:15 Compass Poz, 12.8 ppg Class C, 5%Gel, 3#/sk Kol Seal, 4.64#/sk Salt	2.05	11.12	0	441	Tail, 14.8 ppg, 100% Class C, 1%CaCl2, 0.1%	1.34	6.35	0	100%	
Int1	12.25	9.625	7,892	1530	Lead, 11.3 ppg, HSLD 82 10% Gel, 4% STE, 2#/sk, Gyp Seal	2.74	16.31	0	201	Econolite Tail, 14.8 ppg, 100% Class C, 0.08% C-51	1.33	6.33	7,492	100%	
Prod	8.75	7	11,100	281	HSLD 9420, 10.5 ppg, Class C, 1#/sk Salt, 4% STE 1% C-45	3.99	25.51	6,892							100%
Prod	8.75	5.5	22,362						2811	HSLD 80, 13.ppg, 32#/sk Salt, 4% STE, 1#/sk Gyp Seal	1.52	7.59	11,100	50%	



5. Minimum Specifications for Pressure Control:

The minimum blowout preventer equipment (BOPE) shown in Exhibit #1 will consist of a single ram, mud cross and double ram-type (10,000 psi WP) preventer and an annular preventer (5,000-psi WP). Both units will be hydraulically operated, and the ram-type will be equipped with blind rams on bottom and 4 ½" x 7" variable pipe rams on top. All BOPE will be tested in accordance with Onshore Oil & Gas order No. 2.

Before drilling out of the surface casing, the ram-type BOP and accessory equipment will be tested to 5,000/250 psig and the annular preventer to 3,500/250 psig. The surface casing will be tested to 1500 psi for 30 minutes.

Before drilling out of the intermediate casing, the ram-type BOP and accessory equipment will be tested to 10,000/250 psig and the annular preventer to 3,500/250 psig.

Pipe rams will be operationally checked each 24-hour period. Blind rams will be operationally checked on each trip out of the hole. These checks will be noted on the daily tour sheets.

A hydraulically operated choke will be installed prior to drilling out of the intermediate casing shoe.

6. Types and characteristics of the proposed mud system:

During this procedure we plan to use a Closed-Loop System and haul contents to the required disposal. The applicable depths and properties of the drilling fluid systems are as follows.

Depth	Type	Weight (ppg)	Viscosity	Water Loss
0 – 1,895'	Fresh - Gel	8.6-8.8	28-34	N/c
1,895' – 7,892'	Brine	8.8-10.2	28-34	N/c
7,892' – 12,000'	Brine	8.8-10.2	28-34	N/c
12,000' – 22,362' Lateral	Oil Base	9.0-13	58-68	3 - 6

The highest mud weight needed to balance formation is expected to be 9-13 ppg. In order to maintain hole stability, mud weights up to 13 ppg may be utilized.

An electronic pit volume totalizer (PVT) will be utilized on the circulating system, to monitor pit volume, flow rate, pump pressure and stroke rate.

Sufficient mud materials to maintain mud properties and meet minimum lost circulation and weight increase requirements will be kept at the wellsite at all times.

7. Auxiliary well control and monitoring equipment:

(A) A kelly cock will be kept in the drill string at all times.

(B) A full opening drill pipe-stabbing valve (inside BOP) with proper drill pipe connections will be kept on the rig floor at all times.

(C) H₂S monitoring and detection equipment will be utilized from surface casing point to TD.

(D) A wear bushing will be installed in the wellhead prior to drilling out of the surface casing.

8. Logging, testing and coring program:

GR-CCL-CNL Will be run in cased hole during completions phase of operations.

Open-hole logs are not planned for this well.

**9. Abnormal conditions, pressures, temperatures and potential hazards:**

The estimated bottom-hole temperature at 11,623' TVD (deepest point of the well) is 190F with an estimated maximum bottom-hole pressure (BHP) at the same point of 7,857' psig (based on 13 ppg MW). Hydrogen Sulfide may be present in the area. All necessary precautions will be taken before drilling operations commence. See Hydrogen Sulfide Plan below:

10. Hydrogen Sulfide Plan:

- A. All personnel shall receive proper awareness H2S training.
- B. Briefing Area: two perpendicular areas will be designated by signs and readily accessible.
- C. Required Emergency Equipment
 - a. Well Control Equipment
 - i. Flare line 150' from wellhead to be ignited by auto ignition sparking system.
 - ii. Choke manifold with a remotely operated hydraulic choke.
 - iii. Mud/gas separator
 - b. Protective equipment for essential personnel
 - i. Breathing Apparatus
 - 1. Rescue packs (SCBA) – 1 unit shall be placed at each briefing area, 2 shall be stored in a safety trailer on site.
 - 2. Work/Escapes packs – 4 packs shall be stored on the rig floor with sufficient air hose not to restrict work activity
 - 3. Emergency Escape Packs – 4 packs shall be stored in the doghouse for emergency evacuation.
 - ii. Auxiliary Rescue Equipment
 - 1. Stretcher
 - 2. Two OSHA full body harnesses
 - 3. 100 feet of 5/8 inches OSHA approved rope
 - 4. 1-20# class ABC fire extinguisher
 - c. H2S Detection and Monitoring Equipment
 - i. A stationary detector with three sensors will be placed in the doghouse if equipped, set to visually alarm at 10 ppm and audible at 14 ppm. The detector will be calibrated a minimum of every 30 days or as needed. The sensors will be placed in the following places:
 - 1. Rig Floor
 - 2. Below Rig Floor / Near BOPs
 - 3. End of flow line or where well bore fluid is being discharged (near shakers)
 - ii. If H2S is encountered, measured values and formations will be provided to the BLM.
 - d. Visual Warning Systems
 - i. One color code condition sign will be placed at the entrance to the site reflecting the possible conditions at the site.
 - ii. A colored condition flag will be on display, reflecting the current condition at the site at the time.
 - iii. Two windsocks will be placed in strategic locations, visible from all angles.
 - e. Mud Program



- i. The Mud program will be designed to minimize the volume of H₂S circulated to surface. The operator will have the necessary mud products to minimize hazards while drilling in H₂S bearing zones.
- f. Metallurgy
 - i. All drill strings, casings, tubing, wellhead, blowout preventer, drilling spool, kill lines, choke manifold and lines, and valves shall be suitable for H₂S service at the anticipated operating pressures to prevent sour sulfide stress cracking.
- g. Communication
 - i. Communication will be via cell phones and walkie talkies on location.

Based on concentrations of offset wells, proximity to main roads, and distance to populated areas, the radius of exposure created by a potential release was determined to be minimal and low enough to not necessitate an H₂S contingency plan. This will be reevaluated during wellbore construction if H₂S is observed and after the well is on production.

11. Anticipated starting date and duration of operations:

The drilling operations on the well should be finished in approximately one month. However, in order to minimize disturbance in the area and to improve efficiency Franklin Mountain is planning to drill all the wells on the pad prior to commence completion operations. To even further reduce the time heavy machinery is used the "batch drilling" method may be used. A batch drilling sequence sundry will be submitted for State approval prior to spud. A drilling rig with walking/skidding capabilities will be used.

12. Disposal/environmental concerns:

- (A) Drilled cuttings will be hauled to and disposed of in a state-certified disposal site.
- (B) Non-hazardous waste mud/cement from the drilling process will also be hauled to and disposed of in a state-certified disposal site.
- (C) Garbage will be hauled to the Pecos City Landfill.
- (D) Sewage (grey water) will be hauled to the Carlsbad City Landfill

13. Wellhead:

A multi-bowl wellhead system will be utilized.

After running the 13 3/8" surface casing, a 13-5/8" BOP/BOPE system with a minimum working pressure of 10,000 psi will be installed on the wellhead system and will be pressure tested to 250 psi low followed by a 5,000 psi pressure test. This pressure test will be repeated at least every 30 days.

The minimum working pressure of the BOP and related BOPE required for drilling below the surface casing shoe shall be 5,000 psi.

The wellhead will be installed by a third party welder while being monitored by WH vendor's representative.

All BOP equipment will be tested utilizing a conventional test plug. Not a cup or J-packer type.

A solid steel body pack-off will be utilized after running and cementing the intermediate casing string. After installation of the first intermediate string the pack-off and lower flanges will be pressure tested to 5000 psi.

Both the surface and intermediate casing strings will be tested as per NMOCD Rules to the one-third of manufacture's rated yield pressure, no less than 600 psi, but not greater than 1,500 psi.



14. Additional variance requests

A. Casing.

1. Variance is requested to wave/reduce the centralizer requirements for the 7" and 5 ½" production casing due to the tight clearance with 8 ¾" hole.



Franklin Mountain Energy LLC

PV_Lea County, NM(N83-NME3001)

Foxtail State Com

(A05) Foxtail State Com 804H - Slot Foxtail 804H

804H

Plan: APD-Rev01

Standard Planning Report - Geographic

26 January, 2024



Planning Report - Geographic

Database:	TZ USA 17.2	Local Co-ordinate Reference:	Well (A05) Foxtail State Com 804H - Slot Foxtail 804H
Company:	Franklin Mountain Energy LLC	TVD Reference:	3846+30 @ 3876.00usft
Project:	PV_Lea County, NM(N83-NME3001)	MD Reference:	3846+30 @ 3876.00usft
Site:	Foxtail State Com	North Reference:	Grid
Well:	(A05) Foxtail State Com 804H	Survey Calculation Method:	Minimum Curvature
Wellbore:	804H		
Design:	APD-Rev01		

Project	PV_Lea County, NM(N83-NME3001)		
Map System:	US State Plane 1983	System Datum:	Mean Sea Level
Geo Datum:	North American Datum 1983		
Map Zone:	New Mexico Eastern Zone		

Site	Foxtail State Com		
Site Position:		Northing:	612,593.63 usft
From:	Map	Easting:	805,541.89 usft
Position Uncertainty:	0.00 usft	Slot Radius:	13-3/16 "
		Latitude:	32.68112532
		Longitude:	-103.47463315

Well	(A05) Foxtail State Com 804H - Slot Foxtail 804H					
Well Position	+N/-S	0.00 usft	Northing:	612,594.43 usft	Latitude:	32.68112552
	+E/-W	0.00 usft	Easting:	805,631.87 usft	Longitude:	-103.47434071
Position Uncertainty		0.00 usft	Wellhead Elevation:	usft	Ground Level:	3,846.00 usft
Grid Convergence:		0.46 °				

Wellbore	804H				
Magnetics	Model Name	Sample Date	Declination (°)	Dip Angle (°)	Field Strength (nT)
	IGRF2020	1/19/2024	6.23	60.24	47,499.27805541

Design	APD-Rev01			
Audit Notes:				
Version:	Phase:	PLAN	Tie On Depth:	0.00
Vertical Section:	Depth From (TVD) (usft)	+N/-S (usft)	+E/-W (usft)	Direction (°)
	0.00	0.00	0.00	359.51

Plan Survey Tool Program	Date	1/26/2024		
Depth From (usft)	Depth To (usft)	Survey (Wellbore)	Tool Name	Remarks
1	0.00	22,362.13 APD-Rev01 (804H)	MWD+IFR1+MS	
			OWSG MWD + IFR1 + Multi-S	



Planning Report - Geographic

Database:	TZ USA 17.2	Local Co-ordinate Reference:	Well (A05) Foxtail State Com 804H - Slot Foxtail 804H
Company:	Franklin Mountain Energy LLC	TVD Reference:	3846+30 @ 3876.00usft
Project:	PV_Lea County, NM(N83-NME3001)	MD Reference:	3846+30 @ 3876.00usft
Site:	Foxtail State Com	North Reference:	Grid
Well:	(A05) Foxtail State Com 804H	Survey Calculation Method:	Minimum Curvature
Wellbore:	804H		
Design:	APD-Rev01		

Plan Sections										
Measured Depth (usft)	Inclination (°)	Azimuth (°)	Vertical Depth (usft)	+N/-S (usft)	+E/-W (usft)	Dogleg Rate (°/100usft)	Build Rate (°/100usft)	Turn Rate (°/100usft)	TFO (°)	Target
0.00	0.00	0.00	0.00	0.00	0.00	0.00	0.00	0.00	0.00	
1,500.00	0.00	0.00	1,500.00	0.00	0.00	0.00	0.00	0.00	0.00	
2,033.86	8.01	90.66	2,032.12	-0.43	37.24	1.50	1.50	0.00	90.66	
6,749.54	8.01	90.66	6,701.82	-7.97	694.13	0.00	0.00	0.00	0.00	
7,550.32	0.00	0.00	7,500.00	-8.61	750.00	1.00	-1.00	0.00	180.00	
11,100.36	0.00	0.00	11,050.04	-8.61	750.00	0.00	0.00	0.00	0.00	
12,000.36	90.00	355.00	11,623.00	562.17	700.06	10.00	10.00	0.00	355.00	
12,250.36	90.00	355.00	11,623.00	811.22	678.27	0.00	0.00	0.00	0.00	
12,375.36	90.00	357.50	11,623.00	935.94	670.10	2.00	0.00	2.00	90.00	
12,475.36	90.00	357.50	11,623.00	1,035.84	665.74	0.00	0.00	0.00	0.00	
12,575.87	90.00	359.51	11,623.00	1,136.31	663.12	2.00	0.00	2.00	90.00	
22,362.13	90.00	359.51	11,623.00	10,922.21	579.43	0.00	0.00	0.00	0.00	02-PBHL(FTSC-804H)



Planning Report - Geographic

Database:	TZ USA 17.2	Local Co-ordinate Reference:	Well (A05) Foxtail State Com 804H - Slot Foxtail 804H
Company:	Franklin Mountain Energy LLC	TVD Reference:	3846+30 @ 3876.00usft
Project:	PV_Lea County, NM(N83-NME3001)	MD Reference:	3846+30 @ 3876.00usft
Site:	Foxtail State Com	North Reference:	Grid
Well:	(A05) Foxtail State Com 804H	Survey Calculation Method:	Minimum Curvature
Wellbore:	804H		
Design:	APD-Rev01		

Planned Survey									
Measured Depth (usft)	Inclination (°)	Azimuth (°)	Vertical Depth (usft)	+N/-S (usft)	+E/-W (usft)	Map Northing (usft)	Map Easting (usft)	Latitude	Longitude
0.00	0.00	0.00	0.00	0.00	0.00	612,594.43	805,631.87	32.68112552	-103.47434071
30.00	0.00	0.00	30.00	0.00	0.00	612,594.43	805,631.87	32.68112552	-103.47434071
Cenozoic Alluvium (surface)									
100.00	0.00	0.00	100.00	0.00	0.00	612,594.43	805,631.87	32.68112552	-103.47434071
200.00	0.00	0.00	200.00	0.00	0.00	612,594.43	805,631.87	32.68112552	-103.47434071
300.00	0.00	0.00	300.00	0.00	0.00	612,594.43	805,631.87	32.68112552	-103.47434071
400.00	0.00	0.00	400.00	0.00	0.00	612,594.43	805,631.87	32.68112552	-103.47434071
500.00	0.00	0.00	500.00	0.00	0.00	612,594.43	805,631.87	32.68112552	-103.47434071
600.00	0.00	0.00	600.00	0.00	0.00	612,594.43	805,631.87	32.68112552	-103.47434071
700.00	0.00	0.00	700.00	0.00	0.00	612,594.43	805,631.87	32.68112552	-103.47434071
800.00	0.00	0.00	800.00	0.00	0.00	612,594.43	805,631.87	32.68112552	-103.47434071
900.00	0.00	0.00	900.00	0.00	0.00	612,594.43	805,631.87	32.68112552	-103.47434071
1,000.00	0.00	0.00	1,000.00	0.00	0.00	612,594.43	805,631.87	32.68112552	-103.47434071
1,100.00	0.00	0.00	1,100.00	0.00	0.00	612,594.43	805,631.87	32.68112552	-103.47434071
1,200.00	0.00	0.00	1,200.00	0.00	0.00	612,594.43	805,631.87	32.68112552	-103.47434071
1,300.00	0.00	0.00	1,300.00	0.00	0.00	612,594.43	805,631.87	32.68112552	-103.47434071
1,400.00	0.00	0.00	1,400.00	0.00	0.00	612,594.43	805,631.87	32.68112552	-103.47434071
1,500.00	0.00	0.00	1,500.00	0.00	0.00	612,594.43	805,631.87	32.68112552	-103.47434071
1,600.00	1.50	90.66	1,599.99	-0.02	1.31	612,594.42	805,633.18	32.68112545	-103.47433646
1,700.00	3.00	90.66	1,699.91	-0.06	5.23	612,594.37	805,637.10	32.68112524	-103.47432370
1,800.00	4.50	90.66	1,799.69	-0.14	11.77	612,594.30	805,643.64	32.68112489	-103.47430245
1,844.47	5.17	90.66	1,844.00	-0.18	15.52	612,594.26	805,647.39	32.68112469	-103.47429027
Rustler									
1,900.00	6.00	90.66	1,899.27	-0.24	20.92	612,594.19	805,652.79	32.68112440	-103.47427272
2,000.00	7.50	90.66	1,998.57	-0.38	32.68	612,594.06	805,664.54	32.68112376	-103.47423453
2,033.86	8.01	90.66	2,032.12	-0.43	37.24	612,594.01	805,669.11	32.68112352	-103.47421969
2,100.00	8.01	90.66	2,097.62	-0.53	46.46	612,593.90	805,678.33	32.68112302	-103.47418974
2,158.96	8.01	90.66	2,156.00	-0.63	54.67	612,593.81	805,686.54	32.68112258	-103.47416306
Salado									
2,200.00	8.01	90.66	2,196.64	-0.69	60.39	612,593.74	805,692.26	32.68112227	-103.47414448
2,300.00	8.01	90.66	2,295.67	-0.85	74.32	612,593.58	805,706.19	32.68112152	-103.47409921
2,400.00	8.01	90.66	2,394.69	-1.01	88.25	612,593.42	805,720.12	32.68112077	-103.47405395
2,500.00	8.01	90.66	2,493.72	-1.17	102.18	612,593.26	805,734.05	32.68112002	-103.47400868
2,600.00	8.01	90.66	2,592.74	-1.33	116.11	612,593.10	805,747.98	32.68111927	-103.47396342
2,700.00	8.01	90.66	2,691.77	-1.49	130.04	612,592.94	805,761.90	32.68111852	-103.47391815
2,800.00	8.01	90.66	2,790.79	-1.65	143.97	612,592.78	805,775.83	32.68111777	-103.47387289
2,900.00	8.01	90.66	2,889.82	-1.81	157.90	612,592.62	805,789.76	32.68111702	-103.47382762
3,000.00	8.01	90.66	2,988.84	-1.97	171.83	612,592.46	805,803.69	32.68111627	-103.47378235
3,100.00	8.01	90.66	3,087.87	-2.13	185.76	612,592.30	805,817.62	32.68111553	-103.47373709
3,176.88	8.01	90.66	3,164.00	-2.26	196.47	612,592.18	805,828.33	32.68111495	-103.47370229
Base Salt									
3,200.00	8.01	90.66	3,186.89	-2.29	199.69	612,592.14	805,831.55	32.68111478	-103.47369182
3,300.00	8.01	90.66	3,285.92	-2.45	213.62	612,591.98	805,845.48	32.68111403	-103.47364656
3,400.00	8.01	90.66	3,384.94	-2.61	227.55	612,591.82	805,859.41	32.68111328	-103.47360129
3,440.45	8.01	90.66	3,425.00	-2.68	233.18	612,591.76	805,865.05	32.68111297	-103.47358298
Yates									
3,500.00	8.01	90.66	3,483.97	-2.77	241.48	612,591.66	805,873.34	32.68111253	-103.47355603
3,600.00	8.01	90.66	3,582.99	-2.93	255.41	612,591.50	805,887.27	32.68111178	-103.47351076
3,700.00	8.01	90.66	3,682.02	-3.09	269.34	612,591.34	805,901.20	32.68111103	-103.47346550
3,800.00	8.01	90.66	3,781.04	-3.25	283.27	612,591.18	805,915.13	32.68111028	-103.47342023
3,894.88	8.01	90.66	3,875.00	-3.40	296.48	612,591.03	805,928.35	32.68110957	-103.47337728
Seven Rivers									
3,900.00	8.01	90.66	3,880.07	-3.41	297.20	612,591.02	805,929.06	32.68110953	-103.47337496



Planning Report - Geographic

Database:	TZ USA 17.2	Local Co-ordinate Reference:	Well (A05) Foxtail State Com 804H - Slot Foxtail 804H
Company:	Franklin Mountain Energy LLC	TVD Reference:	3846+30 @ 3876.00usft
Project:	PV_Lea County, NM(N83-NME3001)	MD Reference:	3846+30 @ 3876.00usft
Site:	Foxtail State Com	North Reference:	Grid
Well:	(A05) Foxtail State Com 804H	Survey Calculation Method:	Minimum Curvature
Wellbore:	804H		
Design:	APD-Rev01		

Planned Survey									
Measured Depth (usft)	Inclination (°)	Azimuth (°)	Vertical Depth (usft)	+N/-S (usft)	+E/-W (usft)	Map Northing (usft)	Map Easting (usft)	Latitude	Longitude
4,000.00	8.01	90.66	3,979.09	-3.57	311.13	612,590.86	805,942.99	32.68110878	-103.47332970
4,100.00	8.01	90.66	4,078.12	-3.73	325.06	612,590.70	805,956.92	32.68110803	-103.47328443
4,200.00	8.01	90.66	4,177.14	-3.89	338.99	612,590.54	805,970.85	32.68110728	-103.47323917
4,300.00	8.01	90.66	4,276.17	-4.05	352.92	612,590.38	805,984.78	32.68110653	-103.47319390
4,400.00	8.01	90.66	4,375.19	-4.21	366.85	612,590.22	805,998.71	32.68110578	-103.47314864
4,500.00	8.01	90.66	4,474.22	-4.37	380.78	612,590.06	806,012.64	32.68110503	-103.47310337
4,600.00	8.01	90.66	4,573.24	-4.53	394.71	612,589.90	806,026.57	32.68110428	-103.47305811
4,700.00	8.01	90.66	4,672.27	-4.69	408.64	612,589.74	806,040.50	32.68110353	-103.47301284
4,736.09	8.01	90.66	4,708.00	-4.75	413.66	612,589.68	806,045.53	32.68110326	-103.47299651
Queen									
4,800.00	8.01	90.66	4,771.29	-4.85	422.57	612,589.58	806,054.43	32.68110278	-103.47296758
4,900.00	8.01	90.66	4,870.32	-5.01	436.50	612,589.42	806,068.36	32.68110203	-103.47292231
5,000.00	8.01	90.66	4,969.34	-5.17	450.43	612,589.26	806,082.29	32.68110128	-103.47287704
5,100.00	8.01	90.66	5,068.37	-5.33	464.36	612,589.10	806,096.22	32.68110053	-103.47283178
5,200.00	8.01	90.66	5,167.39	-5.49	478.29	612,588.94	806,110.15	32.68109978	-103.47278651
5,300.00	8.01	90.66	5,266.42	-5.65	492.21	612,588.78	806,124.08	32.68109903	-103.47274125
5,400.00	8.01	90.66	5,365.44	-5.81	506.14	612,588.62	806,138.01	32.68109828	-103.47269598
5,500.00	8.01	90.66	5,464.47	-5.97	520.07	612,588.46	806,151.94	32.68109753	-103.47265072
5,600.00	8.01	90.66	5,563.49	-6.13	534.00	612,588.30	806,165.87	32.68109678	-103.47260545
5,700.00	8.01	90.66	5,662.52	-6.29	547.93	612,588.14	806,179.80	32.68109603	-103.47256019
5,800.00	8.01	90.66	5,761.54	-6.45	561.86	612,587.98	806,193.73	32.68109528	-103.47251492
5,900.00	8.01	90.66	5,860.57	-6.61	575.79	612,587.82	806,207.66	32.68109453	-103.47246965
6,000.00	8.01	90.66	5,959.59	-6.77	589.72	612,587.66	806,221.59	32.68109378	-103.47242439
6,100.00	8.01	90.66	6,058.61	-6.93	603.65	612,587.50	806,235.52	32.68109303	-103.47237912
6,200.00	8.01	90.66	6,157.64	-7.09	617.58	612,587.34	806,249.45	32.68109228	-103.47233386
6,291.25	8.01	90.66	6,248.00	-7.24	630.30	612,587.20	806,262.16	32.68109159	-103.47229255
Delaware Mtn Group									
6,300.00	8.01	90.66	6,256.66	-7.25	631.51	612,587.18	806,263.38	32.68109153	-103.47228859
6,400.00	8.01	90.66	6,355.69	-7.41	645.44	612,587.02	806,277.31	32.68109078	-103.47224333
6,500.00	8.01	90.66	6,454.71	-7.57	659.37	612,586.86	806,291.24	32.68109003	-103.47219806
6,600.00	8.01	90.66	6,553.74	-7.73	673.30	612,586.70	806,305.17	32.68108928	-103.47215280
6,700.00	8.01	90.66	6,652.76	-7.89	687.23	612,586.54	806,319.10	32.68108853	-103.47210753
6,749.54	8.01	90.66	6,701.82	-7.97	694.13	612,586.47	806,326.00	32.68108815	-103.47208511
6,800.00	7.50	90.66	6,751.82	-8.05	700.94	612,586.39	806,332.81	32.68108779	-103.47206298
6,900.00	6.50	90.66	6,851.07	-8.19	713.14	612,586.25	806,345.00	32.68108713	-103.47202336
7,000.00	5.50	90.66	6,950.52	-8.31	723.59	612,586.13	806,355.46	32.68108657	-103.47198938
7,100.00	4.50	90.66	7,050.14	-8.41	732.31	612,586.03	806,364.18	32.68108610	-103.47196104
7,200.00	3.50	90.66	7,149.90	-8.49	739.29	612,585.95	806,371.16	32.68108572	-103.47193836
7,300.00	2.50	90.66	7,249.76	-8.55	744.53	612,585.89	806,376.40	32.68108544	-103.47192134
7,400.00	1.50	90.66	7,349.69	-8.59	748.03	612,585.85	806,379.90	32.68108525	-103.47190998
7,500.00	0.50	90.66	7,449.68	-8.61	749.78	612,585.83	806,381.65	32.68108516	-103.47190429
7,550.32	0.00	0.00	7,500.00	-8.61	750.00	612,585.82	806,381.87	32.68108515	-103.47190357
7,600.00	0.00	0.00	7,549.68	-8.61	750.00	612,585.82	806,381.87	32.68108515	-103.47190357
7,700.00	0.00	0.00	7,649.68	-8.61	750.00	612,585.82	806,381.87	32.68108515	-103.47190357
7,791.32	0.00	0.00	7,741.00	-8.61	750.00	612,585.82	806,381.87	32.68108515	-103.47190357
Bone Spring Lime									
7,800.00	0.00	0.00	7,749.68	-8.61	750.00	612,585.82	806,381.87	32.68108515	-103.47190357
7,900.00	0.00	0.00	7,849.68	-8.61	750.00	612,585.82	806,381.87	32.68108515	-103.47190357
8,000.00	0.00	0.00	7,949.68	-8.61	750.00	612,585.82	806,381.87	32.68108515	-103.47190357
8,100.00	0.00	0.00	8,049.68	-8.61	750.00	612,585.82	806,381.87	32.68108515	-103.47190357
8,200.00	0.00	0.00	8,149.68	-8.61	750.00	612,585.82	806,381.87	32.68108515	-103.47190357
8,300.00	0.00	0.00	8,249.68	-8.61	750.00	612,585.82	806,381.87	32.68108515	-103.47190357
8,400.00	0.00	0.00	8,349.68	-8.61	750.00	612,585.82	806,381.87	32.68108515	-103.47190357



Planning Report - Geographic

Database:	TZ USA 17.2	Local Co-ordinate Reference:	Well (A05) Foxtail State Com 804H - Slot Foxtail 804H
Company:	Franklin Mountain Energy LLC	TVD Reference:	3846+30 @ 3876.00usft
Project:	PV_Lea County, NM(N83-NME3001)	MD Reference:	3846+30 @ 3876.00usft
Site:	Foxtail State Com	North Reference:	Grid
Well:	(A05) Foxtail State Com 804H	Survey Calculation Method:	Minimum Curvature
Wellbore:	804H		
Design:	APD-Rev01		

Planned Survey									
Measured Depth (usft)	Inclination (°)	Azimuth (°)	Vertical Depth (usft)	+N/-S (usft)	+E/-W (usft)	Map Northing (usft)	Map Easting (usft)	Latitude	Longitude
8,500.00	0.00	0.00	8,449.68	-8.61	750.00	612,585.82	806,381.87	32.68108515	-103.47190357
8,600.00	0.00	0.00	8,549.68	-8.61	750.00	612,585.82	806,381.87	32.68108515	-103.47190357
8,700.00	0.00	0.00	8,649.68	-8.61	750.00	612,585.82	806,381.87	32.68108515	-103.47190357
8,800.00	0.00	0.00	8,749.68	-8.61	750.00	612,585.82	806,381.87	32.68108515	-103.47190357
8,900.00	0.00	0.00	8,849.68	-8.61	750.00	612,585.82	806,381.87	32.68108515	-103.47190357
9,000.00	0.00	0.00	8,949.68	-8.61	750.00	612,585.82	806,381.87	32.68108515	-103.47190357
9,100.00	0.00	0.00	9,049.68	-8.61	750.00	612,585.82	806,381.87	32.68108515	-103.47190357
9,200.00	0.00	0.00	9,149.68	-8.61	750.00	612,585.82	806,381.87	32.68108515	-103.47190357
9,300.00	0.00	0.00	9,249.68	-8.61	750.00	612,585.82	806,381.87	32.68108515	-103.47190357
9,399.32	0.00	0.00	9,349.00	-8.61	750.00	612,585.82	806,381.87	32.68108515	-103.47190357
First Bone Spring Sand									
9,400.00	0.00	0.00	9,349.68	-8.61	750.00	612,585.82	806,381.87	32.68108515	-103.47190357
9,500.00	0.00	0.00	9,449.68	-8.61	750.00	612,585.82	806,381.87	32.68108515	-103.47190357
9,600.00	0.00	0.00	9,549.68	-8.61	750.00	612,585.82	806,381.87	32.68108515	-103.47190357
9,675.32	0.00	0.00	9,625.00	-8.61	750.00	612,585.82	806,381.87	32.68108515	-103.47190357
Second Bone Spring Carbonate									
9,700.00	0.00	0.00	9,649.68	-8.61	750.00	612,585.82	806,381.87	32.68108515	-103.47190357
9,800.00	0.00	0.00	9,749.68	-8.61	750.00	612,585.82	806,381.87	32.68108515	-103.47190357
9,900.00	0.00	0.00	9,849.68	-8.61	750.00	612,585.82	806,381.87	32.68108515	-103.47190357
9,901.32	0.00	0.00	9,851.00	-8.61	750.00	612,585.82	806,381.87	32.68108515	-103.47190357
Second Bone Spring Sand									
10,000.00	0.00	0.00	9,949.68	-8.61	750.00	612,585.82	806,381.87	32.68108515	-103.47190357
10,100.00	0.00	0.00	10,049.68	-8.61	750.00	612,585.82	806,381.87	32.68108515	-103.47190357
10,200.00	0.00	0.00	10,149.68	-8.61	750.00	612,585.82	806,381.87	32.68108515	-103.47190357
10,300.00	0.00	0.00	10,249.68	-8.61	750.00	612,585.82	806,381.87	32.68108515	-103.47190357
10,332.32	0.00	0.00	10,282.00	-8.61	750.00	612,585.82	806,381.87	32.68108515	-103.47190357
Third Bone Spring Carbonate									
10,400.00	0.00	0.00	10,349.68	-8.61	750.00	612,585.82	806,381.87	32.68108515	-103.47190357
10,426.32	0.00	0.00	10,376.00	-8.61	750.00	612,585.82	806,381.87	32.68108515	-103.47190357
Third Bone Spring Sand									
10,500.00	0.00	0.00	10,449.68	-8.61	750.00	612,585.82	806,381.87	32.68108515	-103.47190357
10,552.32	0.00	0.00	10,502.00	-8.61	750.00	612,585.82	806,381.87	32.68108515	-103.47190357
Wolfcamp									
10,600.00	0.00	0.00	10,549.68	-8.61	750.00	612,585.82	806,381.87	32.68108515	-103.47190357
10,700.00	0.00	0.00	10,649.68	-8.61	750.00	612,585.82	806,381.87	32.68108515	-103.47190357
10,800.00	0.00	0.00	10,749.68	-8.61	750.00	612,585.82	806,381.87	32.68108515	-103.47190357
10,900.00	0.00	0.00	10,849.68	-8.61	750.00	612,585.82	806,381.87	32.68108515	-103.47190357
11,000.00	0.00	0.00	10,949.68	-8.61	750.00	612,585.82	806,381.87	32.68108515	-103.47190357
11,063.32	0.00	0.00	11,013.00	-8.61	750.00	612,585.82	806,381.87	32.68108515	-103.47190357
Wolfcamp B									
11,100.36	0.00	0.00	11,050.04	-8.61	750.00	612,585.82	806,381.87	32.68108515	-103.47190357
KOP: 11100.36' MD/ -15.02' VS/11050.04' TVD									
11,150.00	4.96	355.00	11,099.61	-6.47	749.81	612,587.96	806,381.68	32.68109103	-103.47190412
11,200.00	9.96	355.00	11,149.18	0.00	749.25	612,594.43	806,381.11	32.68110882	-103.47190579
11,250.00	14.96	355.00	11,197.98	10.75	748.31	612,605.18	806,380.17	32.68113838	-103.47190856
11,300.00	19.96	355.00	11,245.66	25.69	747.00	612,620.12	806,378.87	32.68117948	-103.47191242
11,350.00	24.96	355.00	11,291.85	44.71	745.33	612,639.15	806,377.20	32.68123181	-103.47191733
11,400.00	29.96	355.00	11,336.20	67.68	743.33	612,662.11	806,375.19	32.68129497	-103.47192325
11,450.00	34.96	355.00	11,378.38	94.41	740.99	612,688.84	806,372.86	32.68136848	-103.47193014
11,500.00	39.96	355.00	11,418.05	124.69	738.34	612,719.13	806,370.21	32.68145178	-103.47193796
11,550.00	44.96	355.00	11,454.93	158.31	735.40	612,752.74	806,367.26	32.68154424	-103.47194663
11,600.00	49.96	355.00	11,488.72	195.00	732.19	612,789.44	806,364.05	32.68164515	-103.47195609
11,650.00	54.96	355.00	11,519.17	234.49	728.73	612,828.92	806,360.60	32.68175375	-103.47196628



Planning Report - Geographic

Database:	TZ USA 17.2	Local Co-ordinate Reference:	Well (A05) Foxtail State Com 804H - Slot Foxtail 804H
Company:	Franklin Mountain Energy LLC	TVD Reference:	3846+30 @ 3876.00usft
Project:	PV_Lea County, NM(N83-NME3001)	MD Reference:	3846+30 @ 3876.00usft
Site:	Foxtail State Com	North Reference:	Grid
Well:	(A05) Foxtail State Com 804H	Survey Calculation Method:	Minimum Curvature
Wellbore:	804H		
Design:	APD-Rev01		

Planned Survey										
Measured Depth (usft)	Inclination (°)	Azimuth (°)	Vertical Depth (usft)	+N/-S (usft)	+E/-W (usft)	Map Northing (usft)	Map Easting (usft)	Latitude	Longitude	
11,700.00	59.96	355.00	11,546.05	276.47	725.06	612,870.90	806,356.93	32.68186920	-103.47197710	
11,750.00	64.96	355.00	11,569.16	320.62	721.20	612,915.05	806,353.06	32.68199064	-103.47198849	
11,800.00	69.96	355.00	11,588.32	366.61	717.17	612,961.04	806,349.04	32.68211713	-103.47200036	
11,850.00	74.96	355.00	11,603.38	414.09	713.02	613,008.52	806,344.89	32.68224772	-103.47201260	
11,900.00	79.96	355.00	11,614.23	462.70	708.77	613,057.13	806,340.63	32.68238140	-103.47202514	
11,950.00	84.96	355.00	11,620.79	512.06	704.45	613,106.49	806,336.32	32.68251717	-103.47203787	
12,000.36	90.00	355.00	11,623.00	562.17	700.06	613,156.60	806,331.93	32.68265498	-103.47205080	
EOC: 12000.36' MD/ 556.16' VS/11623.00' TVD - HZ Target										
12,001.78	90.00	355.00	11,623.00	563.58	699.94	613,158.01	806,331.81	32.68265886	-103.47205116	
100FLL: 12001.78' MD/ 557.57' VS/11623.00' TVD										
12,008.78	90.00	355.00	11,623.00	570.55	699.33	613,164.99	806,331.20	32.68267805	-103.47205296	
01-T98(FTSC-804H)										
12,100.00	90.00	355.00	11,623.00	661.43	691.38	613,255.86	806,323.25	32.68292797	-103.47207640	
12,200.00	90.00	355.00	11,623.00	761.04	682.66	613,355.48	806,314.53	32.68320196	-103.47210210	
12,250.36	90.00	355.00	11,623.00	811.22	678.27	613,405.65	806,310.14	32.68333995	-103.47211504	
12,300.00	90.00	355.99	11,623.00	860.70	674.38	613,455.13	806,306.24	32.68347604	-103.47212640	
12,375.36	90.00	357.50	11,623.00	935.94	670.10	613,530.37	806,301.97	32.68368292	-103.47213832	
12,400.00	90.00	357.50	11,623.00	960.55	669.03	613,554.99	806,300.89	32.68375059	-103.47214116	
12,475.36	90.00	357.50	11,623.00	1,035.84	665.74	613,630.28	806,297.61	32.68395760	-103.47214986	
12,500.00	90.00	357.99	11,623.00	1,060.46	664.77	613,654.89	806,296.64	32.68402528	-103.47215236	
12,575.87	90.00	359.51	11,623.00	1,136.31	663.12	613,730.74	806,294.98	32.68423377	-103.47215573	
12,600.00	90.00	359.51	11,623.00	1,160.44	662.91	613,754.87	806,294.78	32.68430010	-103.47215576	
12,700.00	90.00	359.51	11,623.00	1,260.44	662.05	613,854.87	806,293.92	32.68457495	-103.47215590	
12,800.00	90.00	359.51	11,623.00	1,360.43	661.20	613,954.87	806,293.07	32.68484980	-103.47215604	
12,900.00	90.00	359.51	11,623.00	1,460.43	660.34	614,054.86	806,292.21	32.68512464	-103.47215619	
13,000.00	90.00	359.51	11,623.00	1,560.43	659.49	614,154.86	806,291.36	32.68539949	-103.47215633	
13,100.00	90.00	359.51	11,623.00	1,660.42	658.63	614,254.86	806,290.50	32.68567434	-103.47215647	
13,200.00	90.00	359.51	11,623.00	1,760.42	657.78	614,354.85	806,289.65	32.68594919	-103.47215661	
13,300.00	90.00	359.51	11,623.00	1,860.41	656.92	614,454.85	806,288.79	32.68622404	-103.47215675	
13,400.00	90.00	359.51	11,623.00	1,960.41	656.07	614,554.84	806,287.94	32.68649889	-103.47215689	
13,500.00	90.00	359.51	11,623.00	2,060.41	655.21	614,654.84	806,287.08	32.68677373	-103.47215703	
13,600.00	90.00	359.51	11,623.00	2,160.40	654.36	614,754.84	806,286.23	32.68704858	-103.47215717	
13,700.00	90.00	359.51	11,623.00	2,260.40	653.50	614,854.83	806,285.37	32.68732343	-103.47215731	
13,800.00	90.00	359.51	11,623.00	2,360.40	652.65	614,954.83	806,284.52	32.68759828	-103.47215745	
13,900.00	90.00	359.51	11,623.00	2,460.39	651.79	615,054.83	806,283.66	32.68787313	-103.47215760	
14,000.00	90.00	359.51	11,623.00	2,560.39	650.94	615,154.82	806,282.81	32.68814798	-103.47215774	
14,100.00	90.00	359.51	11,623.00	2,660.39	650.08	615,254.82	806,281.95	32.68842282	-103.47215788	
14,200.00	90.00	359.51	11,623.00	2,760.38	649.23	615,354.82	806,281.10	32.68869767	-103.47215802	
14,300.00	90.00	359.51	11,623.00	2,860.38	648.37	615,454.81	806,280.24	32.68897252	-103.47215816	
14,400.00	90.00	359.51	11,623.00	2,960.37	647.52	615,554.81	806,279.39	32.68924737	-103.47215830	
14,500.00	90.00	359.51	11,623.00	3,060.37	646.66	615,654.80	806,278.53	32.68952222	-103.47215844	
14,600.00	90.00	359.51	11,623.00	3,160.37	645.81	615,754.80	806,277.67	32.68979707	-103.47215858	
14,700.00	90.00	359.51	11,623.00	3,260.36	644.95	615,854.80	806,276.82	32.69007191	-103.47215872	
14,800.00	90.00	359.51	11,623.00	3,360.36	644.10	615,954.79	806,275.96	32.69034676	-103.47215886	
14,900.00	90.00	359.51	11,623.00	3,460.36	643.24	616,054.79	806,275.11	32.69062161	-103.47215900	
15,000.00	90.00	359.51	11,623.00	3,560.35	642.39	616,154.79	806,274.25	32.69089646	-103.47215915	
15,100.00	90.00	359.51	11,623.00	3,660.35	641.53	616,254.78	806,273.40	32.69117131	-103.47215929	
15,200.00	90.00	359.51	11,623.00	3,760.34	640.68	616,354.78	806,272.54	32.69144616	-103.47215943	
15,300.00	90.00	359.51	11,623.00	3,860.34	639.82	616,454.77	806,271.69	32.69172100	-103.47215957	
15,400.00	90.00	359.51	11,623.00	3,960.34	638.97	616,554.77	806,270.83	32.69199585	-103.47215971	
15,500.00	90.00	359.51	11,623.00	4,060.33	638.11	616,654.77	806,269.98	32.69227070	-103.47215985	
15,600.00	90.00	359.51	11,623.00	4,160.33	637.26	616,754.76	806,269.12	32.69254555	-103.47215999	
15,700.00	90.00	359.51	11,623.00	4,260.33	636.40	616,854.76	806,268.27	32.69282040	-103.47216013	



Planning Report - Geographic

Database:	TZ USA 17.2	Local Co-ordinate Reference:	Well (A05) Foxtail State Com 804H - Slot Foxtail 804H
Company:	Franklin Mountain Energy LLC	TVD Reference:	3846+30 @ 3876.00usft
Project:	PV_Lea County, NM(N83-NME3001)	MD Reference:	3846+30 @ 3876.00usft
Site:	Foxtail State Com	North Reference:	Grid
Well:	(A05) Foxtail State Com 804H	Survey Calculation Method:	Minimum Curvature
Wellbore:	804H		
Design:	APD-Rev01		

Planned Survey									
Measured Depth (usft)	Inclination (°)	Azimuth (°)	Vertical Depth (usft)	+N/-S (usft)	+E/-W (usft)	Map Northing (usft)	Map Easting (usft)	Latitude	Longitude
15,800.00	90.00	359.51	11,623.00	4,360.32	635.55	616,954.76	806,267.41	32.69309524	-103.47216027
15,900.00	90.00	359.51	11,623.00	4,460.32	634.69	617,054.75	806,266.56	32.69337009	-103.47216041
16,000.00	90.00	359.51	11,623.00	4,560.32	633.83	617,154.75	806,265.70	32.69364494	-103.47216055
16,100.00	90.00	359.51	11,623.00	4,660.31	632.98	617,254.75	806,264.85	32.69391979	-103.47216069
16,200.00	90.00	359.51	11,623.00	4,760.31	632.12	617,354.74	806,263.99	32.69419464	-103.47216083
16,300.00	90.00	359.51	11,623.00	4,860.30	631.27	617,454.74	806,263.14	32.69446948	-103.47216097
16,400.00	90.00	359.51	11,623.00	4,960.30	630.41	617,554.73	806,262.28	32.69474433	-103.47216111
16,500.00	90.00	359.51	11,623.00	5,060.30	629.56	617,654.73	806,261.43	32.69501918	-103.47216125
16,600.00	90.00	359.51	11,623.00	5,160.29	628.70	617,754.73	806,260.57	32.69529403	-103.47216139
16,700.00	90.00	359.51	11,623.00	5,260.29	627.85	617,854.72	806,259.72	32.69556888	-103.47216154
16,800.00	90.00	359.51	11,623.00	5,360.29	626.99	617,954.72	806,258.86	32.69584372	-103.47216168
16,900.00	90.00	359.51	11,623.00	5,460.28	626.14	618,054.72	806,258.01	32.69611857	-103.47216182
17,000.00	90.00	359.51	11,623.00	5,560.28	625.28	618,154.71	806,257.15	32.69639342	-103.47216196
17,100.00	90.00	359.51	11,623.00	5,660.28	624.43	618,254.71	806,256.30	32.69666827	-103.47216210
17,200.00	90.00	359.51	11,623.00	5,760.27	623.57	618,354.71	806,255.44	32.69694312	-103.47216224
17,300.00	90.00	359.51	11,623.00	5,860.27	622.72	618,454.70	806,254.59	32.69721796	-103.47216238
17,400.00	90.00	359.51	11,623.00	5,960.26	621.86	618,554.70	806,253.73	32.69749281	-103.47216252
17,500.00	90.00	359.51	11,623.00	6,060.26	621.01	618,654.69	806,252.88	32.69776766	-103.47216266
17,600.00	90.00	359.51	11,623.00	6,160.26	620.15	618,754.69	806,252.02	32.69804251	-103.47216280
17,700.00	90.00	359.51	11,623.00	6,260.25	619.30	618,854.69	806,251.17	32.69831736	-103.47216294
17,800.00	90.00	359.51	11,623.00	6,360.25	618.44	618,954.68	806,250.31	32.69859220	-103.47216308
17,900.00	90.00	359.51	11,623.00	6,460.25	617.59	619,054.68	806,249.46	32.69886705	-103.47216322
18,000.00	90.00	359.51	11,623.00	6,560.24	616.73	619,154.68	806,248.60	32.69914190	-103.47216336
18,100.00	90.00	359.51	11,623.00	6,660.24	615.88	619,254.67	806,247.75	32.69941675	-103.47216350
18,200.00	90.00	359.51	11,623.00	6,760.24	615.02	619,354.67	806,246.89	32.69969159	-103.47216364
18,300.00	90.00	359.51	11,623.00	6,860.23	614.17	619,454.67	806,246.03	32.69996644	-103.47216378
18,400.00	90.00	359.51	11,623.00	6,960.23	613.31	619,554.66	806,245.18	32.70024129	-103.47216392
18,500.00	90.00	359.51	11,623.00	7,060.22	612.46	619,654.66	806,244.32	32.70051614	-103.47216406
18,600.00	90.00	359.51	11,623.00	7,160.22	611.60	619,754.65	806,243.47	32.70079099	-103.47216420
18,700.00	90.00	359.51	11,623.00	7,260.22	610.75	619,854.65	806,242.61	32.70106583	-103.47216434
18,800.00	90.00	359.51	11,623.00	7,360.21	609.89	619,954.65	806,241.76	32.70134068	-103.47216448
18,900.00	90.00	359.51	11,623.00	7,460.21	609.04	620,054.64	806,240.90	32.70161553	-103.47216462
19,000.00	90.00	359.51	11,623.00	7,560.21	608.18	620,154.64	806,240.05	32.70189038	-103.47216476
19,100.00	90.00	359.51	11,623.00	7,660.20	607.33	620,254.64	806,239.19	32.70216522	-103.47216490
19,200.00	90.00	359.51	11,623.00	7,760.20	606.47	620,354.63	806,238.34	32.70244007	-103.47216504
19,300.00	90.00	359.51	11,623.00	7,860.20	605.62	620,454.63	806,237.48	32.70271492	-103.47216518
19,400.00	90.00	359.51	11,623.00	7,960.19	604.76	620,554.63	806,236.63	32.70298977	-103.47216532
19,500.00	90.00	359.51	11,623.00	8,060.19	603.91	620,654.62	806,235.77	32.70326461	-103.47216546
19,600.00	90.00	359.51	11,623.00	8,160.18	603.05	620,754.62	806,234.92	32.70353946	-103.47216560
19,700.00	90.00	359.51	11,623.00	8,260.18	602.19	620,854.61	806,234.06	32.70381431	-103.47216574
19,800.00	90.00	359.51	11,623.00	8,360.18	601.34	620,954.61	806,233.21	32.70408916	-103.47216588
19,900.00	90.00	359.51	11,623.00	8,460.17	600.48	621,054.61	806,232.35	32.70436400	-103.47216602
20,000.00	90.00	359.51	11,623.00	8,560.17	599.63	621,154.60	806,231.50	32.70463885	-103.47216616
20,100.00	90.00	359.51	11,623.00	8,660.17	598.77	621,254.60	806,230.64	32.70491370	-103.47216630
20,200.00	90.00	359.51	11,623.00	8,760.16	597.92	621,354.60	806,229.79	32.70518855	-103.47216644
20,300.00	90.00	359.51	11,623.00	8,860.16	597.06	621,454.59	806,228.93	32.70546340	-103.47216658
20,400.00	90.00	359.51	11,623.00	8,960.15	596.21	621,554.59	806,228.08	32.70573824	-103.47216672
20,500.00	90.00	359.51	11,623.00	9,060.15	595.35	621,654.58	806,227.22	32.70601309	-103.47216686
20,600.00	90.00	359.51	11,623.00	9,160.15	594.50	621,754.58	806,226.37	32.70628794	-103.47216700
20,700.00	90.00	359.51	11,623.00	9,260.14	593.64	621,854.58	806,225.51	32.70656279	-103.47216714
20,800.00	90.00	359.51	11,623.00	9,360.14	592.79	621,954.57	806,224.66	32.70683763	-103.47216728
20,900.00	90.00	359.51	11,623.00	9,460.14	591.93	622,054.57	806,223.80	32.70711248	-103.47216742
21,000.00	90.00	359.51	11,623.00	9,560.13	591.08	622,154.57	806,222.95	32.70738733	-103.47216756
21,100.00	90.00	359.51	11,623.00	9,660.13	590.22	622,254.56	806,222.09	32.70766217	-103.47216770



Planning Report - Geographic

Database:	TZ USA 17.2	Local Co-ordinate Reference:	Well (A05) Foxtail State Com 804H - Slot Foxtail 804H
Company:	Franklin Mountain Energy LLC	TVD Reference:	3846+30 @ 3876.00usft
Project:	PV_Lea County, NM(N83-NME3001)	MD Reference:	3846+30 @ 3876.00usft
Site:	Foxtail State Com	North Reference:	Grid
Well:	(A05) Foxtail State Com 804H	Survey Calculation Method:	Minimum Curvature
Wellbore:	804H		
Design:	APD-Rev01		

Planned Survey									
Measured Depth (usft)	Inclination (°)	Azimuth (°)	Vertical Depth (usft)	+N/-S (usft)	+E/-W (usft)	Map Northing (usft)	Map Easting (usft)	Latitude	Longitude
21,200.00	90.00	359.51	11,623.00	9,760.13	589.37	622,354.56	806,221.24	32.70793702	-103.47216784
21,300.00	90.00	359.51	11,623.00	9,860.12	588.51	622,454.56	806,220.38	32.70821187	-103.47216798
21,400.00	90.00	359.51	11,623.00	9,960.12	587.66	622,554.55	806,219.53	32.70848672	-103.47216811
21,500.00	90.00	359.51	11,623.00	10,060.11	586.80	622,654.55	806,218.67	32.70876156	-103.47216825
21,600.00	90.00	359.51	11,623.00	10,160.11	585.95	622,754.54	806,217.82	32.70903641	-103.47216839
21,700.00	90.00	359.51	11,623.00	10,260.11	585.09	622,854.54	806,216.96	32.70931126	-103.47216853
21,800.00	90.00	359.51	11,623.00	10,360.10	584.24	622,954.54	806,216.10	32.70958611	-103.47216867
21,900.00	90.00	359.51	11,623.00	10,460.10	583.38	623,054.53	806,215.25	32.70986095	-103.47216881
22,000.00	90.00	359.51	11,623.00	10,560.10	582.53	623,154.53	806,214.39	32.71013580	-103.47216895
22,100.00	90.00	359.51	11,623.00	10,660.09	581.67	623,254.53	806,213.54	32.71041065	-103.47216909
22,200.00	90.00	359.51	11,623.00	10,760.09	580.82	623,354.52	806,212.68	32.71068550	-103.47216923
22,300.00	90.00	359.51	11,623.00	10,860.09	579.96	623,454.52	806,211.83	32.71096034	-103.47216937
22,362.13	90.00	359.51	11,623.00	10,922.21	579.43	623,516.64	806,211.30	32.71113110	-103.47216946
TD: 22362.13' MD/ 10916.86' VS/11623.00' TVD - 02-PBHL(FTSC-804H)									

Design Targets									
Target Name	Dip Angle (°)	Dip Dir. (°)	TVD (usft)	+N/-S (usft)	+E/-W (usft)	Northing (usft)	Easting (usft)	Latitude	Longitude
- hit/miss target									
- Shape									
02-PBHL(FTSC-804H)	0.00	0.00	11,623.00	10,922.21	579.43	623,516.64	806,211.30	32.71113110	-103.47216946
- plan hits target center									
- Point									
01-T98(FTSC-804H)	0.00	0.00	11,623.00	567.89	668.85	613,162.32	806,300.72	32.68267140	-103.47215209
- plan misses target center by 30.60usft at 12008.78usft MD (11623.00 TVD, 570.55 N, 699.33 E)									
- Point									

Formations						
Measured Depth (usft)	Vertical Depth (usft)	Name	Lithology	Dip (°)	Dip Direction (°)	
30.00	30.00	Cenozoic Alluvium (surface)				
1,844.47	1,844.00	Rustler				
2,158.96	2,156.00	Salado				
3,176.88	3,164.00	Base Salt				
3,440.45	3,425.00	Yates				
3,894.88	3,875.00	Seven Rivers				
4,736.09	4,708.00	Queen				
6,291.25	6,248.00	Delaware Mtn Group				
7,791.32	7,741.00	Bone Spring Lime				
9,399.32	9,349.00	First Bone Spring Sand				
9,675.32	9,625.00	Second Bone Spring Carbonate				
9,901.32	9,851.00	Second Bone Spring Sand				
10,332.32	10,282.00	Third Bone Spring Carbonate				
10,426.32	10,376.00	Third Bone Spring Sand				
10,552.32	10,502.00	Wolfcamp				
11,063.32	11,013.00	Wolfcamp B				
12,000.36	11,623.00	HZ Target				



Planning Report - Geographic

Database:	TZ USA 17.2	Local Co-ordinate Reference:	Well (A05) Foxtail State Com 804H - Slot Foxtail 804H
Company:	Franklin Mountain Energy LLC	TVD Reference:	3846+30 @ 3876.00usft
Project:	PV_Lea County, NM(N83-NME3001)	MD Reference:	3846+30 @ 3876.00usft
Site:	Foxtail State Com	North Reference:	Grid
Well:	(A05) Foxtail State Com 804H	Survey Calculation Method:	Minimum Curvature
Wellbore:	804H		
Design:	APD-Rev01		

Plan Annotations					
Measured Depth (usft)	Vertical Depth (usft)	Local Coordinates			
		+N/-S (usft)	+E/-W (usft)	Comment	
11,100.36	11,050.04	-8.61	750.00	KOP: 11100.36' MD/ -15.02' VS/11050.04' TVD	
12,000.36	11,623.00	562.16	700.06	EOC: 12000.36' MD/ 556.16' VS/11623.00' TVD	
12,001.78	11,623.00	563.58	699.94	100FLL: 12001.78' MD/ 557.57' VS/11623.00' TVD	
22,362.13	11,623.00	10,922.21	579.43	TD: 22362.13' MD/ 10916.86' VS/11623.00' TVD	

State of New Mexico
Energy, Minerals and Natural Resources Department
Oil Conservation Division
1220 South St. Francis Dr.
Santa Fe, NM 87505

Submit Electronically
Via E-permitting

NATURAL GAS MANAGEMENT PLAN

This Natural Gas Management Plan must be submitted with each Application for Permit to Drill (APD) for a new or recompleted well.

Section 1 – Plan Description

Effective May 25, 2021

I. Operator: Franklin Mountain Energy 3, LLC **OGRID:** 331595 **Date:** 4/3/2024

II. Type: ☒ Original ☐ Amendment due to ☐ 19.15.27.9.D(6)(a) NMAC ☐ 19.15.27.9.D(6)(b) NMAC ☐ Other.

If Other, please describe: _____

III. Well(s): Provide the following information for each new or recompleted well or set of wells proposed to be drilled or proposed to be recompleted from a single well pad or connected to a central delivery point.

Well Name	API	ULSTR	Footages	Anticipated Oil BBL/D	Anticipated Gas MCF/D	Anticipated Produced Water BBL/D
See Attached Well List						

IV. Central Delivery Point Name: Junction CTB [See 19.15.27.9(D)(1) NMAC]

V. Anticipated Schedule: Provide the following information for each new or recompleted well or set of wells proposed to be drilled or proposed to be recompleted from a single well pad or connected to a central delivery point.

Well Name	API	Spud Date	TD Reached Date	Completion Commencement Date	Initial Flow Back Date	First Production Date
See Attached Well List						

VI. Separation Equipment: ☒ Attach a complete description of how Operator will size separation equipment to optimize gas capture.

VII. Operational Practices: ☒ Attach a complete description of the actions Operator will take to comply with the requirements of Subsection A through F of 19.15.27.8 NMAC.

VIII. Best Management Practices: ☒ Attach a complete description of Operator's best management practices to minimize venting during active and planned maintenance.

Section 2 – Enhanced Plan

EFFECTIVE APRIL 1, 2022

Beginning April 1, 2022, an operator that is not in compliance with its statewide natural gas capture requirement for the applicable reporting area must complete this section.

☒ Operator certifies that it is not required to complete this section because Operator is in compliance with its statewide natural gas capture requirement for the applicable reporting area.

IX. Anticipated Natural Gas Production:

Well	API	Anticipated Average Natural Gas Rate MCF/D	Anticipated Volume of Natural Gas for the First Year MCF

X. Natural Gas Gathering System (NGGS):

Operator	System	ULSTR of Tie-in	Anticipated Gathering Start Date	Available Maximum Daily Capacity of System Segment Tie-in

XI. Map. ☒ Attach an accurate and legible map depicting the location of the well(s), the anticipated pipeline route(s) connecting the production operations to the existing or planned interconnect of the natural gas gathering system(s), and the maximum daily capacity of the segment or portion of the natural gas gathering system(s) to which the well(s) will be connected.

XII. Line Capacity. The natural gas gathering system ☐ will ☐ will not have capacity to gather 100% of the anticipated natural gas production volume from the well prior to the date of first production.

XIII. Line Pressure. Operator ☐ does ☐ does not anticipate that its existing well(s) connected to the same segment, or portion, of the natural gas gathering system(s) described above will continue to meet anticipated increases in line pressure caused by the new well(s).

☐ Attach Operator's plan to manage production in response to the increased line pressure.

XIV. Confidentiality: ☐ Operator asserts confidentiality pursuant to Section 71-2-8 NMSA 1978 for the information provided in Section 2 as provided in Paragraph (2) of Subsection D of 19.15.27.9 NMAC, and attaches a full description of the specific information for which confidentiality is asserted and the basis for such assertion.

Section 3 - Certifications

Effective May 25, 2021

Operator certifies that, after reasonable inquiry and based on the available information at the time of submittal:

☒ Operator will be able to connect the well(s) to a natural gas gathering system in the general area with sufficient capacity to transport one hundred percent of the anticipated volume of natural gas produced from the well(s) commencing on the date of first production, taking into account the current and anticipated volumes of produced natural gas from other wells connected to the pipeline gathering system; or

☐ Operator will not be able to connect to a natural gas gathering system in the general area with sufficient capacity to transport one hundred percent of the anticipated volume of natural gas produced from the well(s) commencing on the date of first production, taking into account the current and anticipated volumes of produced natural gas from other wells connected to the pipeline gathering system.

If Operator checks this box, Operator will select one of the following:

Well Shut-In. ☐ Operator will shut-in and not produce the well until it submits the certification required by Paragraph (4) of Subsection D of 19.15.27.9 NMAC; or

Venting and Flaring Plan. ☐ Operator has attached a venting and flaring plan that evaluates and selects one or more of the potential alternative beneficial uses for the natural gas until a natural gas gathering system is available, including:

- (a) power generation on lease;
- (b) power generation for grid;
- (c) compression on lease;
- (d) liquids removal on lease;
- (e) reinjection for underground storage;
- (f) reinjection for temporary storage;
- (g) reinjection for enhanced oil recovery;
- (h) fuel cell production; and
- (i) other alternative beneficial uses approved by the division.

Section 4 - Notices

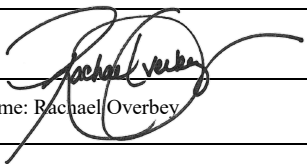
1. If, at any time after Operator submits this Natural Gas Management Plan and before the well is spud:

(a) Operator becomes aware that the natural gas gathering system it planned to connect the well(s) to has become unavailable or will not have capacity to transport one hundred percent of the production from the well(s), no later than 20 days after becoming aware of such information, Operator shall submit for OCD's approval a new or revised venting and flaring plan containing the information specified in Paragraph (5) of Subsection D of 19.15.27.9 NMAC; or

(b) Operator becomes aware that it has, cumulatively for the year, become out of compliance with its baseline natural gas capture rate or natural gas capture requirement, no later than 20 days after becoming aware of such information, Operator shall submit for OCD's approval a new or revised Natural Gas Management Plan for each well it plans to spud during the next 90 days containing the information specified in Paragraph (2) of Subsection D of 19.15.27.9 NMAC, and shall file an update for each Natural Gas Management Plan until Operator is back in compliance with its baseline natural gas capture rate or natural gas capture requirement.

2. OCD may deny or conditionally approve an APD if Operator does not make a certification, fails to submit an adequate venting and flaring plan which includes alternative beneficial uses for the anticipated volume of natural gas produced, or if OCD determines that Operator will not have adequate natural gas takeaway capacity at the time a well will be spud.

I certify that, after reasonable inquiry, the statements in and attached to this Natural Gas Management Plan are true and correct to the best of my knowledge and acknowledge that a false statement may be subject to civil and criminal penalties under the Oil and Gas Act.

Signature: 
Printed Name: Rachael Overbey
Title: Director Operations Planning & Regulatory
E-mail Address: roverbey@fmelle.com
Date: 4/3/2024
Phone: 720-414-7868
OIL CONSERVATION DIVISION (Only applicable when submitted as a standalone form)
Approved By:
Title:
Approval Date:
Conditions of Approval:

NATURAL GAS MANAGEMENT PLAN

III. Well(s): Provide the following information for each new or recompleted well or set of wells proposed to be drilled or proposed to be recompleted from a single well pad or connected to a central delivery point.

Well Name	API 14 Digit	ULSTR	Surface Location FTG	Anticipated Oil BBL/D	Anticipated Gas MCF/D	Anticipated Produced Water BBL/D
Foxtail State Com 301H	TBD	N-05-19S-35E	71 FSL 1844 FWL	800 +/-	700 +/-	2500 +/-
Foxtail State Com 302H	TBD	O-05-19S-35E	72 FSL 2408 FEL	800 +/-	700 +/-	2500 +/-
Foxtail State Com 303H	TBD	A-08-19S-35E	462 FNL 1123 FEL	800 +/-	700 +/-	2500 +/-
Foxtail State Com 304H	TBD	A-08-19S-35E	462 FNL 1063 FEL	800 +/-	700 +/-	2500 +/-
Foxtail State Com 501H	TBD	N-05-19S-35E	71 FSL 1784 FWL	800 +/-	700 +/-	2500 +/-
Foxtail State Com 502H	TBD	N-05-19S-35E	71 FSL 1934 FWL	800 +/-	700 +/-	2500 +/-
Foxtail State Com 503H	TBD	O-05-19S-35E	72 FSL 2318 FEL	800 +/-	700 +/-	2500 +/-
Foxtail State Com 504H	TBD	A-08-19S-35E	462 FNL 1093 FEL	800 +/-	700 +/-	2500 +/-
Foxtail State Com 601H	TBD	N-05-19S-35E	71 FSL 1874 FWL	800 +/-	700 +/-	2500 +/-
Foxtail State Com 602H	TBD	O-05-19S-35E	72 FSL 2378 FEL	800 +/-	700 +/-	2500 +/-
Foxtail State Com 701H	TBD	N-05-19S-35E	71 FSL 1814 FWL	800 +/-	700 +/-	2500 +/-
Foxtail State Com 702H	TBD	N-05-19S-35E	71 FSL 1964 FWL	800 +/-	700 +/-	2500 +/-
Foxtail State Com 801H	TBD	N-05-19S-35E	71 FSL 1904 FWL	800 +/-	700 +/-	2500 +/-
Foxtail State Com 802H	TBD	O-05-19S-35E	72 FSL 2348 FEL	800 +/-	700 +/-	2500 +/-
Foxtail State Com 803H	TBD	A-08-19S-35E	462 FNL 1153 FEL	800 +/-	700 +/-	2500 +/-
Foxtail State Com 804H	TBD	A-08-19S-35E	462 FNL 1033 FEL	800 +/-	700 +/-	2500 +/-
Rambo Fee Com 302H	TBD	O-05-19S-35E	172 FSL 2409 FEL	800 +/-	700 +/-	2500 +/-
Rambo Fee Com 602H	TBD	O-05-19S-35E	172 FSL 2319 FEL	800 +/-	700 +/-	2500 +/-
Rambo Fee Com 802H	TBD	O-05-19S-35E	172 FSL 2349 FEL	800 +/-	700 +/-	2500 +/-
Rambo State Com 303H	TBD	P-05-19S-35E	219 FSL 1283 FEL	800 +/-	700 +/-	2500 +/-
Rambo State Com 304H	TBD	P-05-19S-35E	219 FSL 1253 FEL	800 +/-	700 +/-	2500 +/-
Rambo State Com 503H	TBD	O-05-19S-35E	172 FSL 2379 FEL	800 +/-	700 +/-	2500 +/-
Rambo State Com 504H	TBD	P-05-19S-35E	219 FSL 1223 FEL	800 +/-	700 +/-	2500 +/-
Rambo State Com 803H	TBD	P-05-19S-35E	219 FSL 1193 FEL	800 +/-	700 +/-	2500 +/-
Rambo State Com 804H	TBD	P-05-19S-35E	219 FSL 1163 FEL	800 +/-	700 +/-	2500 +/-

V. Anticipated Schedule: Provide the following information for each new or recompleted well or set of wells proposed to be drilled or proposed to be

Well Name	API 14 Digit	Spud Date (Batch Drilling)	TD Reached Date	Completion Commencement Date	Initial Flowback Date	First Production Date
Foxtail State Com 301H	TBD	9/1/2024	2/18/2025	3/15/2025	5/29/2025	5/31/2025
Foxtail State Com 302H	TBD	9/1/2024	2/18/2025	3/15/2025	5/29/2025	5/31/2025
Foxtail State Com 303H	TBD	10/1/2024	1/29/2025	2/23/2025	4/14/2025	4/16/2025
Foxtail State Com 304H	TBD	10/1/2024	1/29/2025	2/23/2025	4/14/2025	4/16/2025
Foxtail State Com 501H	TBD	9/1/2024	2/18/2025	3/15/2025	5/29/2025	5/31/2025
Foxtail State Com 502H	TBD	9/1/2024	2/18/2025	3/15/2025	5/29/2025	5/31/2025
Foxtail State Com 503H	TBD	10/1/2024	1/29/2025	2/23/2025	4/14/2025	4/16/2025
Foxtail State Com 504H	TBD	10/1/2024	1/29/2025	2/23/2025	4/14/2025	4/16/2025
Foxtail State Com 601H	TBD	9/1/2024	2/18/2025	3/15/2025	5/29/2025	5/31/2025
Foxtail State Com 602H	TBD	9/1/2024	2/18/2025	3/15/2025	5/29/2025	5/31/2025
Foxtail State Com 701H	TBD	9/1/2024	2/18/2025	3/15/2025	5/29/2025	5/31/2025
Foxtail State Com 702H	TBD	9/1/2024	2/18/2025	3/15/2025	5/29/2025	5/31/2025
Foxtail State Com 801H	TBD	9/1/2024	2/18/2025	3/15/2025	5/29/2025	5/31/2025
Foxtail State Com 802H	TBD	9/1/2024	2/18/2025	3/15/2025	5/29/2025	5/31/2025
Foxtail State Com 803H	TBD	10/1/2024	1/29/2025	2/23/2025	4/14/2025	4/16/2025
Foxtail State Com 804H	TBD	10/1/2024	1/29/2025	2/23/2025	4/14/2025	4/16/2025
Rambo Fee Com 302H	TBD	8/15/2025	10/14/2025	10/29/2025	11/28/2025	11/30/2025
Rambo Fee Com 602H	TBD	8/15/2025	10/14/2025	10/29/2025	11/28/2025	11/30/2025
Rambo Fee Com 802H	TBD	8/15/2025	10/14/2025	10/29/2025	11/28/2025	11/30/2025
Rambo State Com 303H	TBD	8/15/2025	12/13/2025	1/7/2026	3/18/2026	3/20/2026
Rambo State Com 304H	TBD	8/15/2025	12/13/2025	1/7/2026	3/18/2026	3/20/2026
Rambo State Com 503H	TBD	8/15/2025	12/13/2025	1/7/2026	3/18/2026	3/20/2026
Rambo State Com 504H	TBD	8/15/2025	12/13/2025	1/7/2026	3/18/2026	3/20/2026
Rambo State Com 803H	TBD	8/15/2025	12/13/2025	1/7/2026	3/18/2026	3/20/2026
Rambo State Com 804H	TBD	8/15/2025	12/13/2025	1/7/2026	3/18/2026	3/20/2026



Natural Gas Management Plan

Items VI-VIII

VI. Separation Equipment: Attach a complete description of how Operator will size separation equipment to optimize gas capture.

- Data from surrounding wells is used to generate type curves which provides the basis for expected gas rates during initial production, peak production and then the natural decline.
- Separation equipment will be sized to provide adequate separation for peak production.
- Facility design includes multiple stages of separation to minimize gas waste. Wells flow through a 3-phase separator to remove gas. Gas from the 3 Phase separators are then sent through a gas scrubber before being route to treatment and/or sales.
- Industry standard sizing calculations are used for gas-liquid separation and liquid-liquid separation.

VII. Operational Practices: Attach a complete description of the actions Operator will take to comply with the requirements of Subsection A through F 19.15.27.8 NMAC.

- Drilling, completion and production setup is designed to minimize the waste of natural gas and to flare instead of vent.
- *Drilling Operations:*
 - Natural gas encountered will be flared instead of vented unless there is an equipment malfunction and/or to avoid risking safety or the environment.
 - Flares will be properly sized and placed at least 100' from the nearest surface hole on the pad.
- *Completions/Recompletions Operations:*
 - Flowback operations will not commence until connected to a properly sized gas gathering system.
 - During initial flowback wells are routed to the separation equipment as soon as technically feasible to minimize gas waste.
 - During separation flowback wells are routed to the separation equipment to minimize gas waste.
 - Gas sales is maximized. Gas will be flared instead of vented during an emergency or malfunction to avoid posing a risk to operations or personnel safety.
 - Flares are properly sized with a continuous pilot.
- *Production Operations:*
 - Gas sales will be maximized. Gas will be flared instead of vented during an emergency or malfunction to avoid posing a risk to operations or personnel safety.
 - After a well is stabilized from liquid unloading, the well will be turned back into the collection system.
- *Performance Standards:*
 - The facility will be designed to handle peak production rates and pressures.
 - All tanks will have automatic gauging equipment.
 - Flares will be designed to ensure proper combustion and will have continuous pilots. Flares will be located 100' from nearest surface hole on the pad and storage tanks.
 - Weekly AVOs will be performed, and any leaking thief hatches will be cleaned and properly re-sealed.
- *Measurement and Calibration:*



- All volume that is flared and vented that is not measured will be estimated.
- When metering is not practical due to low pressure/rate, all vented or flared volumes will be estimated.
- Measurement will conform to industry standards. Measurement will not be bypassed except for purposes of inspection or calibration.

VIII. Best Management Practices: Attach a complete description of Operator's best management practices to minimize venting during active and planned maintenance.

- Venting will be minimized during active and planned maintenance.
- Systems and equipment requiring maintenance will be isolated and blown down to sales and then flare before any remaining gas is vented in an effort to minimize waste and venting.
- Downhole maintenance will use best management practices to minimize vent.

Junction NGMP Map
Nov 2023
- Capacities reflected are FME's understanding of 3rd party midstream system capacities

