

District I

1625 N. French Dr., Hobbs, NM 88240
Phone:(575) 393-6161 Fax:(575) 393-0720

District II

811 S. First St., Artesia, NM 88210
Phone:(575) 748-1283 Fax:(575) 748-9720

District III

1000 Rio Brazos Rd., Aztec, NM 87410
Phone:(505) 334-6178 Fax:(505) 334-6170

District IV

1220 S. St Francis Dr., Santa Fe, NM 87505
Phone:(505) 476-3470 Fax:(505) 476-3462

State of New Mexico
Energy, Minerals and Natural Resources
Oil Conservation Division
1220 S. St Francis Dr.
Santa Fe, NM 87505

Form C-101
August 1, 2011

Permit 369670

APPLICATION FOR PERMIT TO DRILL, RE-ENTER, DEEPEN, PLUGBACK, OR ADD A ZONE

1. Operator Name and Address DEVON ENERGY PRODUCTION COMPANY, LP 333 West Sheridan Ave. Oklahoma City, OK 73102		2. OGRID Number 6137
		3. API Number 30-015-55302
4. Property Code 333760	5. Property Name MIMOSA 18-16 STATE COM	6. Well No. 001H

7. Surface Location

UL - Lot D	Section 18	Township 20S	Range 30E	Lot Idn 1	Feet From 1115	N/S Line N	Feet From 1066	E/W Line W	County Eddy
---------------	---------------	-----------------	--------------	--------------	-------------------	---------------	-------------------	---------------	----------------

8. Proposed Bottom Hole Location

UL - Lot A	Section 16	Township 20S	Range 30E	Lot Idn A	Feet From 720	N/S Line N	Feet From 20	E/W Line E	County Eddy
---------------	---------------	-----------------	--------------	--------------	------------------	---------------	-----------------	---------------	----------------

9. Pool Information

WC-015 G-07 S203032G;WOLFCAMP	97963
-------------------------------	-------

Additional Well Information

11. Work Type New Well	12. Well Type OIL	13. Cable/Rotary	14. Lease Type State	15. Ground Level Elevation 3306
16. Multiple N	17. Proposed Depth 26051	18. Formation Wolfcamp	19. Contractor	20. Spud Date 8/1/2024
Depth to Ground water		Distance from nearest fresh water well		Distance to nearest surface water

☒ We will be using a closed-loop system in lieu of lined pits

21. Proposed Casing and Cement Program

Type	Hole Size	Casing Size	Casing Weight/ft	Setting Depth	Sacks of Cement	Estimated TOC
Surf	17.5	13.38	54.5	329	277	0
Int1	12.25	10.75	45.5	1205	191	0
Int2	9.88	8.63	32	3754	194	0
Prod	7.88	5.5	20	26052	2244	7981

Casing/Cement Program: Additional Comments

--

22. Proposed Blowout Prevention Program

Type	Working Pressure	Test Pressure	Manufacturer
Annular	5000	2500	
Blind	5000	2500	
Double Ram	5000	2500	
Annular	5000	5000	
Blind	5000	5000	
Double Ram	5000	5000	
Annular	5000	5000	
Blind	5000	5000	
Double Ram	5000	5000	

23. I hereby certify that the information given above is true and complete to the best of my knowledge and belief.
I further certify I have complied with 19.15.14.9 (A) NMAC ☒ and/or 19.15.14.9 (B) NMAC ☒ if applicable.

OIL CONSERVATION DIVISION

Signature:			
Printed Name:	Electronically filed by Jeff Walla	Approved By:	Ward Rikala
Title:	Supervisor Land	Title:	Petroleum Specialist Supervisor
Email Address:	Jeff.Walla@dmv.com	Approved Date:	8/1/2024
Date:	7/10/2024	Phone:	575-748-9925
		Expiration Date:	8/1/2026
		Conditions of Approval Attached	

District I
1625 N. French Dr., Hobbs, NM 88240
Phone: (575) 393-6161 Fax: (575) 393-0720

District II
811 S. First St., Artesia, NM 88210
Phone: (575) 748-1283 Fax: (575) 748-9720

District III
1000 Rio Brazos Road, Aztec, NM 87410
Phone: (505) 334-6178 Fax: (505) 334-6170

District IV
1220 S. St. Francis Dr., Santa Fe, NM 87505
Phone: (505) 476-3460 Fax: (505) 476-3462

State of New Mexico
Energy, Minerals & Natural Resources Department
OIL CONSERVATION DIVISION
1220 South St. Francis Dr.
Santa Fe, NM 87505

Form C-102

Revised August 1, 2011

Submit one copy to
appropriate District Office☐ AMENDED REPORT**WELL LOCATION AND ACREAGE DEDICATION PLAT**

¹ API Number 30-015-55302	² Pool Code 97963	³ Pool Name WC-015 G-07 S203032G; Wolfcamp
⁴ Property Code 333760	⁵ Property Name MIMOSA 18-16 STATE COM	
⁷ OGRID No. 6137	⁸ Operator Name DEVON ENERGY PRODUCTION COMPANY, L.P.	
		⁶ Well Number 001H
		⁹ Elevation 3306.5'

10 Surface Location

UL or lot no. D	Section 18	Township 20-S	Range 30-E	Lot Idn LOT 1	Feet from the 1115	North/South line NORTH	Feet from the 1066	East/West line WEST	County EDDY
---------------------------	----------------------	-------------------------	----------------------	-------------------------	------------------------------	----------------------------------	------------------------------	-------------------------------	-----------------------

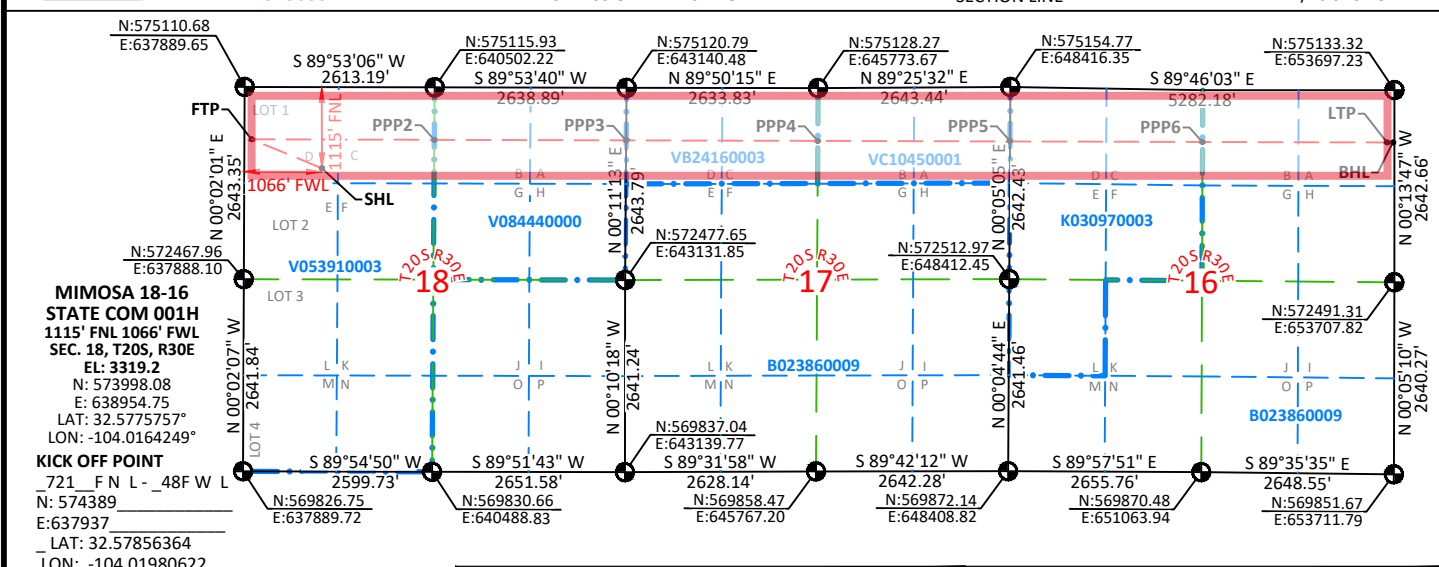
11 Bottom Hole Location If Different From Surface

UL or lot no. A	Section 16	Township 20-S	Range 30-E	Lot Idn	Feet from the 720	North/South line NORTH	Feet from the 20	East/West line EAST	County EDDY
---------------------------	----------------------	-------------------------	----------------------	---------	-----------------------------	----------------------------------	----------------------------	-------------------------------	-----------------------

¹² Dedicated Acres 479.20	¹³ Joint or Infill	¹⁴ Consolidation Code	¹⁵ Order No.
--	-------------------------------	----------------------------------	-------------------------

No allowable will be assigned to this completion until all interests have been consolidated
or a non-standard unit has been approved by the division.

16 LEGEND --- LEASE LINE VB123456001 LEASE ID NUMBER ● FOUND USGLO B.C. "UNLESS OTHERWISE NOTED" --- WELL PATH --- SECTION LINE --- 1/4 SECTION LINE --- 1/16 SECTION LINE

**17 OPERATOR CERTIFICATION**

I hereby certify that the information contained herein is true and complete to the best of my knowledge and belief, and that this organization either owns a working interest or unleased mineral interest in the land including the proposed bottom hole location or has a right to drill this well at this location pursuant to a contract with an owner of such a mineral or working interest, or to a voluntary pooling agreement or a compulsory pooling order heretofore entered by the division.

Arianna Evans 7/10/24
Signature Date
Arianna Evans
Printed Name
arianna.evans@dvn.com
E-mail Address

NOTES:

1. BEARINGS SHOWN ARE GRID BASED ON THE NEW MEXICO STATE PLANE EAST ZONE COORDINATE SYSTEM (3001), NAD 83 (2011), BASED FROM GPS OBSERVATIONS, OCCUPYING A WHS CONTROL POINT (5/8" REBAR), LOCATED AT AT N:556917.441 E:633268.606 ORTHO:3349.52. DETERMINED BY AN OPUS SOLUTION ON SEPTEMBER 5TH, 2019.
2. DISTANCES DEPICTED HEREON ARE REPORTED AS GROUND DISTANCE IN US SURVEY FEET USING A COMBINED SCALE FACTOR OF 1.000237768
3. ELEVATIONS ARE EXISTING GROUND ELEVATIONS UNLESS NOTED.

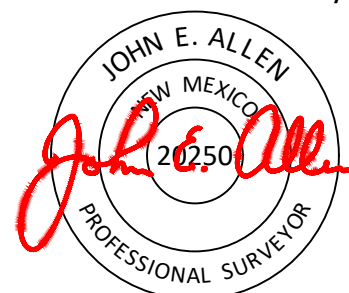
18 SURVEYOR CERTIFICATION

I hereby certify that the well location shown on this plat was plotted from field notes of actual surveys made by me or under my supervision, and that the same is true and correct to the best of my belief.

05/29/24

Date of Survey

Signature and Seal of Professional Surveyor:



Certificate No. 20250	John E. Allen
Drawn by: JEB	Checked by: JEA Date: 05/30/24

Intent ☒ As Drilled ☐

API #		
Operator Name: DEVON ENERGY PRODUCTION COMPANY, L.P.	Property Name: MIMOSA 18-16 STATE COM	Well Number 001H

Kick Off Point (KOP)

UL	Section 18	Township 20S	Range 30E	Lot	Feet 721	From N/S NORTH	Feet 48	From E/W WEST	County EDDY
Latitude 32.57856364					Longitude -104.01980622			NAD 83	

First Take Point (FTP)

UL D	Section 18	Township 20-S	Range 30-E	Lot	Feet 720	From N/S NORTH	Feet 100	From E/W WEST	County EDDY
Latitude 32.5786637°					Longitude -104.0195556°			NAD 83	

Last Take Point (LTP)

UL A	Section 16	Township 20-S	Range 30-E	Lot	Feet 720	From N/S NORTH	Feet 100	From E/W EAST	County EDDY
Latitude 32.5785874°					Longitude -103.9688756°			NAD 83	

Is this well the defining well for the Horizontal Spacing Unit? ☒Is this well an infill well? ☐

If infill is yes provide API if available, Operator name and well number for Defining well for Horizontal Spacing Unit.

API #		
Operator Name:	Property Name:	Well Number

KZ 06/29/2018

District I
1625 N. French Dr., Hobbs, NM 88240
Phone:(575) 393-6161 Fax:(575) 393-0720
District II
811 S. First St., Artesia, NM 88210
Phone:(575) 748-1283 Fax:(575) 748-9720
District III
1000 Rio Brazos Rd., Aztec, NM 87410
Phone:(505) 334-6178 Fax:(505) 334-6170
District IV
1220 S. St Francis Dr., Santa Fe, NM 87505
Phone:(505) 476-3470 Fax:(505) 476-3462

State of New Mexico
Energy, Minerals and Natural Resources
Oil Conservation Division
1220 S. St Francis Dr.
Santa Fe, NM 87505

Form APD Conditions
Permit 369670

PERMIT CONDITIONS OF APPROVAL

Operator Name and Address: DEVON ENERGY PRODUCTION COMPANY, LP [6137] 333 West Sheridan Ave. Oklahoma City, OK 73102	API Number: 30-015-55302
	Well: MIMOSA 18-16 STATE COM #001H

OCD Reviewer	Condition
ward.rikala	Notify OCD 24 hours prior to casing & cement
ward.rikala	Will require a File As Drilled C-102 and a Directional Survey with the C-104
ward.rikala	Once the well is spud, to prevent ground water contamination through whole or partial conduits from the surface, the operator shall drill without interruption through the fresh water zone or zones and shall immediately set in cement the water protection string
ward.rikala	Cement is required to circulate on both surface and intermediate1 strings of casing
ward.rikala	If cement does not circulate on any string, a CBL is required for that string of casing
ward.rikala	Oil base muds are not to be used until fresh water zones are cased and cemented providing isolation from the oil or diesel. This includes synthetic oils. Oil based mud, drilling fluids and solids must be contained in a steel closed loop system
ward.rikala	The Operator is to notify NMOCD by sundry (Form C-103) within ten (10) days of the well being spud

State of New Mexico
Energy, Minerals and Natural Resources Department

Submit Electronically
Via E-permitting

Oil Conservation Division
1220 South St. Francis Dr.
Santa Fe, NM 87505

NATURAL GAS MANAGEMENT PLAN

This Natural Gas Management Plan must be submitted with each Application for Permit to Drill (APD) for a new or recompleted well.

Section 1 – Plan Description

Effective May 25, 2021

I. Operator: Devon Energy Production Company, L.P. **OGRID:** 6137 **Date:** 07 / 9 / 2024

II. Type: ☒ Original ☐ Amendment due to ☐ 19.15.27.9.D(6)(a) NMAC ☐ 19.15.27.9.D(6)(b) NMAC ☐ Other.

If Other, please describe: _____

III. Well(s): Provide the following information for each new or recompleted well or set of wells proposed to be drilled or proposed to be recompleted from a single well pad or connected to a central delivery point.

Well Name	API	ULSTR	Footages	Anticipated Oil BBL/D	Anticipated Gas MCF/D	Anticipated Produced Water BBL/D
See Attached						

IV. Central Delivery Point Name: SEE ATTACHMENTS [See 19.15.27.9(D)(1) NMAC]

V. Anticipated Schedule: Provide the following information for each new or recompleted well or set of wells proposed to be drilled or proposed to be recompleted from a single well pad or connected to a central delivery point.

Well Name	API	Spud Date	TD Reached Date	Completion Commencement Date	Initial Flow Back Date	First Production Date
See Attached						

VI. Separation Equipment: ☒ Attach a complete description of how Operator will size separation equipment to optimize gas capture.

VII. Operational Practices: ☒ Attach a complete description of the actions Operator will take to comply with the requirements of Subsection A through F of 19.15.27.8 NMAC.

VIII. Best Management Practices: ☒ Attach a complete description of Operator's best management practices to minimize venting during active and planned maintenance.

Section 2 – Enhanced Plan
EFFECTIVE APRIL 1, 2022

Beginning April 1, 2022, an operator that is not in compliance with its statewide natural gas capture requirement for the applicable reporting area must complete this section.

☒ Operator certifies that it is not required to complete this section because Operator is in compliance with its statewide natural gas capture requirement for the applicable reporting area.

IX. Anticipated Natural Gas Production:

Well	API	Anticipated Average Natural Gas Rate MCF/D	Anticipated Volume of Natural Gas for the First Year MCF

X. Natural Gas Gathering System (NGGS):

Operator	System	ULSTR of Tie-in	Anticipated Gathering Start Date	Available Maximum Daily Capacity of System Segment Tie-in

XI. Map. ☐ Attach an accurate and legible map depicting the location of the well(s), the anticipated pipeline route(s) connecting the production operations to the existing or planned interconnect of the natural gas gathering system(s), and the maximum daily capacity of the segment or portion of the natural gas gathering system(s) to which the well(s) will be connected.

XII. Line Capacity. The natural gas gathering system ☐ will ☐ will not have capacity to gather 100% of the anticipated natural gas production volume from the well prior to the date of first production.

XIII. Line Pressure. Operator ☐ does ☐ does not anticipate that its existing well(s) connected to the same segment, or portion, of the natural gas gathering system(s) described above will continue to meet anticipated increases in line pressure caused by the new well(s).

☐ Attach Operator's plan to manage production in response to the increased line pressure.

XIV. Confidentiality: ☐ Operator asserts confidentiality pursuant to Section 71-2-8 NMSA 1978 for the information provided in Section 2 as provided in Paragraph (2) of Subsection D of 19.15.27.9 NMAC, and attaches a full description of the specific information for which confidentiality is asserted and the basis for such assertion.

Section 3 - Certifications

Effective May 25, 2021

Operator certifies that, after reasonable inquiry and based on the available information at the time of submittal:

☒ Operator will be able to connect the well(s) to a natural gas gathering system in the general area with sufficient capacity to transport one hundred percent of the anticipated volume of natural gas produced from the well(s) commencing on the date of first production, taking into account the current and anticipated volumes of produced natural gas from other wells connected to the pipeline gathering system; or

☐ Operator will not be able to connect to a natural gas gathering system in the general area with sufficient capacity to transport one hundred percent of the anticipated volume of natural gas produced from the well(s) commencing on the date of first production, taking into account the current and anticipated volumes of produced natural gas from other wells connected to the pipeline gathering system.

If Operator checks this box, Operator will select one of the following:

Well Shut-In. ☐ Operator will shut-in and not produce the well until it submits the certification required by Paragraph (4) of Subsection D of 19.15.27.9 NMAC; or

Venting and Flaring Plan. ☐ Operator has attached a venting and flaring plan that evaluates and selects one or more of the potential alternative beneficial uses for the natural gas until a natural gas gathering system is available, including:

- (a) power generation on lease;
- (b) power generation for grid;
- (c) compression on lease;
- (d) liquids removal on lease;
- (e) reinjection for underground storage;
- (f) reinjection for temporary storage;
- (g) reinjection for enhanced oil recovery;
- (h) fuel cell production; and
- (i) other alternative beneficial uses approved by the division.

Section 4 - Notices

1. If, at any time after Operator submits this Natural Gas Management Plan and before the well is spud:

(a) Operator becomes aware that the natural gas gathering system it planned to connect the well(s) to has become unavailable or will not have capacity to transport one hundred percent of the production from the well(s), no later than 20 days after becoming aware of such information, Operator shall submit for OCD's approval a new or revised venting and flaring plan containing the information specified in Paragraph (5) of Subsection D of 19.15.27.9 NMAC; or

(b) Operator becomes aware that it has, cumulatively for the year, become out of compliance with its baseline natural gas capture rate or natural gas capture requirement, no later than 20 days after becoming aware of such information, Operator shall submit for OCD's approval a new or revised Natural Gas Management Plan for each well it plans to spud during the next 90 days containing the information specified in Paragraph (2) of Subsection D of 19.15.27.9 NMAC, and shall file an update for each Natural Gas Management Plan until Operator is back in compliance with its baseline natural gas capture rate or natural gas capture requirement.

2. OCD may deny or conditionally approve an APD if Operator does not make a certification, fails to submit an adequate venting and flaring plan which includes alternative beneficial uses for the anticipated volume of natural gas produced, or if OCD determines that Operator will not have adequate natural gas takeaway capacity at the time a well will be spud.

I certify that, after reasonable inquiry, the statements in and attached to this Natural Gas Management Plan are true and correct to the best of my knowledge and acknowledge that a false statement may be subject to civil and criminal penalties under the Oil and Gas Act.

Signature:



Printed Name: Jeff Walla

Title: Surface Land and Regulatory Manager

E-mail Address:

Date: 7/15/24

Phone:

OIL CONSERVATION DIVISION
(Only applicable when submitted as a standalone form)

Approved By:

Title:

Approval Date:

Conditions of Approval:

NATURAL GAS MANAGEMENT PLAN										
Section 1 - Plan Description										
III. Well(s): Provide the following information for each new or recompleted well or set of wells proposed to be drilled or proposed to be recompleted from a single well pad or connected to a central delivery point.										
Well Name	API	ULSTR	FOOTAGES				Anticipated Oil BBL/D	Anticipated Gas MCF/D	Anticipated Produced Water BBL/D	Central Delivery Point Name:
MIMOSA 18-16 STATE COM 001H		18-20S-30E	1115	FNL	1066	FWL	(+/-)626bopd	(+/-)6778mcfd	(+/-)2539bwpgd	MIMOSA 18 CTB 1
V. Anticipated Schedule: Provide the following information for each new or recompleted well or set of wells proposed to be drilled or proposed to be recompleted from a single well pad or connected to a central delivery point.										
Well Name	API	Spud Date	TD Reached Date	Completion Commence ment Date	Initial Flow back Date	First Production Date				
MIMOSA 18-16 STATE COM 332H	n/a	8/10/2024	9/9/2024	1/7/2025	1/7/2025	1/7/2025				
* Dates subject to change										



VI. Separation Equipment

Devon Energy Production Company, L.P. utilizes a "stage separation" process in which oil and gas separation is carried out through a series of separators operating at successively reduced pressures. Hydrocarbon liquids are produced into a high-pressure inlet separator, then carried through one or more lower pressure separation vessels before entering the storage tanks. The purpose of this separation process is to attain maximum recovery of liquid hydrocarbons from the fluids and allow maximum capture of produced gas into the sales pipeline. Devon utilizes a series of Low-Pressure Compression units to capture gas off the staged separation and send it to the sales pipeline. This process minimizes the amount of flash gas that enters the end-stage storage tanks that is subsequently vented or flared.



VII. Operational Practices

Devon Energy Production Company, L. P. will employ best management practices and control technologies to maximize the recovery and minimize waste of natural gas through venting and flaring.

- During drilling operations, Devon will utilize flares and/or combustors to capture and control natural gas, where technically feasible. If flaring is deemed technically in-feasible, Devon will employ best management practices to minimize or reduce venting to the extent possible.
- During completions operations, Devon will utilize Green Completion methods to capture gas produced during well completions that is otherwise vented or flared. If capture is technically in-feasible, flares and/or combustors will be used to capture and control flow back fluids entering into frac tanks during initial flowback. Upon indication of first measurable hydrocarbon volumes, Devon will turn operations to onsite separation vessels and flow to the gathering pipeline.
- During production operations, Devon will take every practical effort to minimize waste of natural gas through venting and flaring by:
 - Designing and constructing facilities in a manner consistent to achieve maximum capture and control of hydrocarbon liquids & produced gas
 - Utilizing a closed-loop capture system to collect and route produced gas to sales line via low pressure compression, or to a flare/combustor
 - Flaring in lieu of venting, where technically feasible
 - Utilizing auto-ignitors or continuous pilots, with thermocouples connected to Scada, to quickly detect and resolve issues related to malfunctioning flares/combustors
 - Employ the use of automatic tank gauging to minimize storage tank venting during loading events
 - Installing air-driven or electric-driven pneumatics & combustion engines, where technically feasible to minimize venting to the atmosphere
 - Confirm equipment is properly maintained and repaired through a preventative maintenance and repair program to ensure equipment meets all manufacturer specifications
 - Conduct and document AVO inspections on the frequency set forth in Part 27 to detect and repair any onsite leaks as quickly and efficiently as is feasible



VIII. Best Management Practices during Maintenance

Devon Energy Production Company, L.P. will utilize best management practices to minimize venting during active and planned maintenance activities. Devon is operating under guidance that production facilities permitted under NOI permits have no provisions to allow high pressure flaring and high pressure flaring is only allowed in disruption scenarios so long as the duration is less than eight hours. When technically feasible, flaring during maintenance activities will be utilized in lieu of venting to the atmosphere. Devon will work with third-party operators during scheduled maintenance of downstream pipeline or processing plants to address those events ahead of time to minimize venting. Actions considered include identifying alternative capture approaches or planning to temporarily reduce production or shut in the well to address these circumstances.



**Devon Energy Center
333 West Sheridan Avenue
Oklahoma City, Oklahoma 73102-5015**

Hydrogen Sulfide (H₂S) Contingency Plan

For

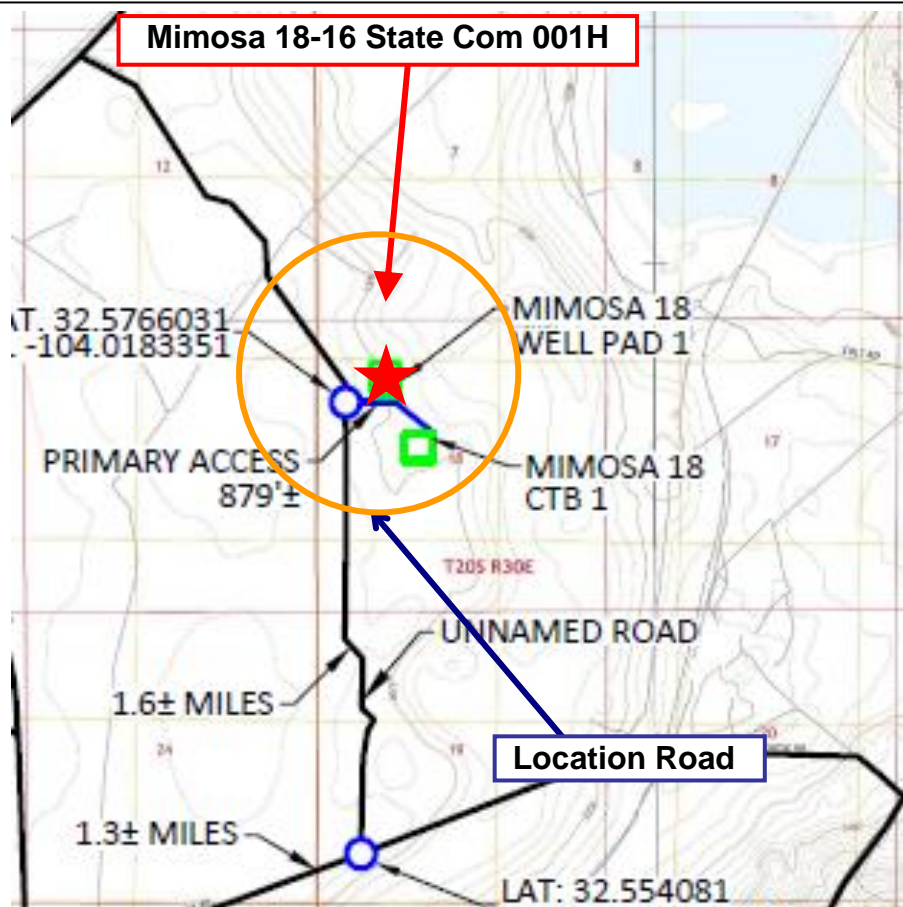
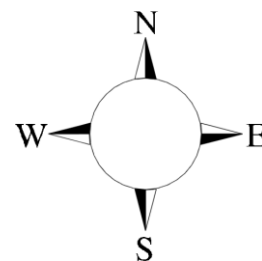
Mimosa 18-16 State Com 001H

**Sec-18 T-20S R-30E
1115' FNL & 1066' FWL
LAT. = 32.5775757' N (NAD83)
LONG = 104.0164249' W**

Eddy County NM

Mimosa 18-16 State Com 001H

This is an open drilling site. H₂S monitoring equipment and emergency response equipment will be used within 500' of zones known to contain H₂S, including warning signs, wind indicators and H₂S monitor.



Assumed 100 ppm ROE = 3000' (Radius of Exposure)
100 ppm H₂S concentration shall trigger activation of this plan.

Escape

Crews shall escape upwind of escaping gas in the event of an emergency release of gas. Escape can be facilitated from the location entrance road. Crews should then block the entrance to the location from the lease road so as not to allow anyone traversing into a hazardous area. The blockade should be at a safe distance outside of the ROE. There are no homes or buildings in or near the ROE.

Assumed 100 ppm ROE = 3000'

100 ppm H₂S concentration shall trigger activation of this plan.

Emergency Procedures

In the event of a release of gas containing H₂S, the first responder(s) must

- Isolate the area and prevent entry by other persons into the 100 ppm ROE.
- Evacuate any public places encompassed by the 100 ppm ROE.
- Be equipped with H₂S monitors and air packs in order to control the release.
- Use the “buddy system” to ensure no injuries occur during the response
- Take precautions to avoid personal injury during this operation.
- Contact operator and/or local officials to aid in operation. See list of phone numbers attached.
- Have received training in the
 - Detection of H₂S, and
 - Measures for protection against the gas,
 - Equipment used for protection and emergency response.

Ignition of Gas Source

Should control of the well be considered lost and ignition considered, take care to protect against exposure to Sulfur Dioxide (SO₂). Intentional ignition must be coordinated with the NMOCD and local officials. Additionally the NM State Police may become involved. NM State Police shall be the Incident Command on scene of any major release. Take care to protect downwind whenever there is an ignition of the gas

Characteristics of H₂S and SO₂

Common Name	Chemical Formula	Specific Gravity	Threshold Limit	Hazardous Limit	Lethal Concentration
Hydrogen Sulfide	H ₂ S	1.189 Air = 1	10 ppm	100 ppm/hr	600 ppm
Sulfur Dioxide	SO ₂	2.21 Air = 1	2 ppm	N/A	1000 ppm

Contacting Authorities

Devon Energy Corp. personnel must liaison with local and state agencies to ensure a proper response to a major release. Additionally, the OCD must be notified of the release as soon as possible but no later than 4 hours. Agencies will ask for information such as type and volume of release, wind direction, location of release, etc. Be prepared with all information available. The following call list of essential and potential responders has been prepared for use during a release. Devon Energy Corp. Company response must be in coordination with the State of New Mexico's 'Hazardous Materials Emergency Response Plan' (HMER)

Hydrogen Sulfide Drilling Operation Plan

I. HYDROGEN SULFIDE (H₂S) TRAINING

All personnel, whether regularly assigned, contracted, or employed on an unscheduled basis, will receive training from a qualified instructor in the following areas prior to commencing drilling operations on this well:

1. The hazards and characteristics of hydrogen sulfide (H₂S)
2. The proper use and maintenance of personal protective equipment and life support systems.
3. The proper use of H₂S detectors, alarms, warning systems, briefing areas, evacuation procedures, and prevailing winds.
4. The proper techniques for first aid and rescue procedures.

In addition, supervisory personnel will be trained in the following areas:

1. The effects of H₂S metal components. If high tensile tubulars are to be used, personnel will be trained in their special maintenance requirements.
2. Corrective action and shut-in procedures when drilling or reworking a well and blowout prevention and well control procedures.
3. The contents and requirements of the H₂S Drilling Operations Plan.

There will be weekly H₂S and well control drills for all personnel in each crew.

II. HYDROGEN SULFIDE TRAINING

Note: All H₂S safety equipment and systems will be installed, tested, and operational when drilling reaches a depth of 500 feet above, or three days prior to penetrating the first zone containing or reasonably expected to contain H₂S.

1. Well Control Equipment

- A. Flare line
- B. Choke manifold – Remotely Operated
- C. Blind rams and pipe rams to accommodate all pipe sizes with properly sized closing unit
- D. Auxiliary equipment may include if applicable: annular preventer and rotating head.
- E. Mud/Gas Separator

2. Protective equipment for essential personnel:

30-minute SCBA units located at briefing areas, as indicated on well site diagram, with escape units available in the top doghouse. As it may be difficult to communicate audibly while wearing these units, hand signals shall be utilized.

3. H₂S detection and monitoring equipment:

Portable H₂S monitors positioned on location for best coverage and response. These units have warning lights which activate when H₂S levels reach 10 ppm and audible sirens which activate at 10 ppm. Sensor locations:

- Bell nipple
- Possum Belly/Shale shaker
- Rig floor
- Choke manifold
- Cellar

Visual warning systems:

- A. Wind direction indicators as shown on well site diagram
- B. Caution/ Danger signs shall be posted on roads providing direct access to locations. Signs will be painted a high visibility yellow with black lettering of sufficient size to be reasonable distance from the immediate location. Bilingual signs will be used when appropriate.

4. Mud program:

The mud program has been designed to minimize the volume of H₂S circulated to surface. Proper mud weight, safe drilling practices and the use of H₂S scavengers will minimize hazards when penetrating H₂S bearing zones.

5. Metallurgy:

- A. All drill strings, casings, tubing, wellhead, blowout preventer, drilling spool, kill lines, choke manifold lines, and valves shall be H₂S trim.
- B. All elastomers used for packing and seals shall be H₂S trim.

6. Communication:

- A. Company personnel have/use cellular telephones in the field.
- B. Land line (telephone) communications at Office

7. Well testing:

- A. Drill stem testing will be performed with a minimum number of personnel in the immediate vicinity, which are necessary to safety and adequately conduct the test. The drill stem testing will be conducted during daylight hours and formation fluids will not be flowed to the surface. All drill-stem-testing operations conducted in an H₂S environment will use the closed chamber method of testing.
- B. There will be no drill stem testing.

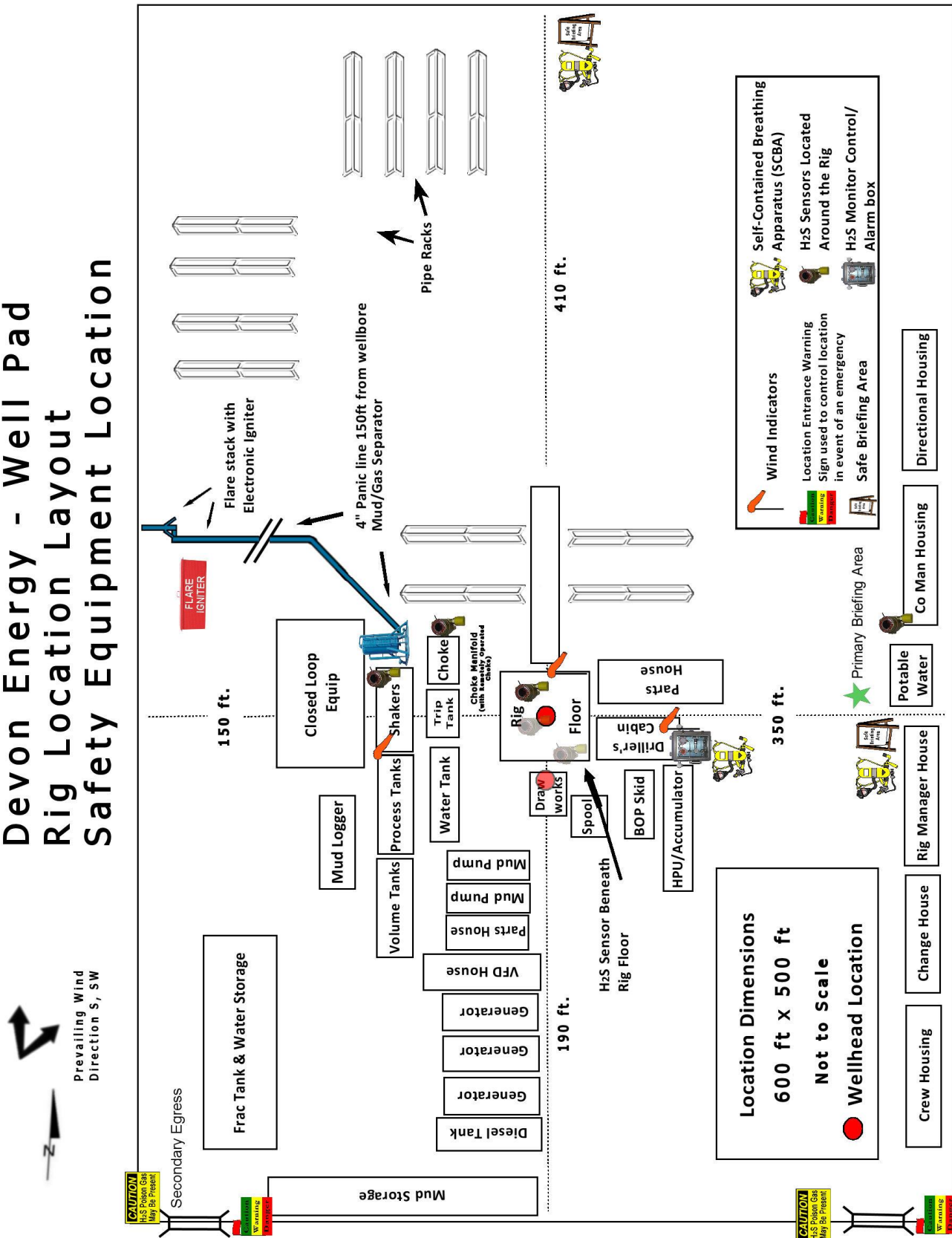
<u>Devon Energy Corp. Company Call List</u>			
Employee/Company Contact Representative	Position	Phone Number	After Hours Number
Jonathan Fisher (North)	Drilling Manager	832-967-7912	
Jason Hildebrand (South)	Drilling Manager	405-552-6514	
Rich Downey	Drilling VP	405-228-2415	
Josh Harvey	EHS Manager	405-228-2440	918-500-5536
Laura Wright	EHS Supervisor	405-552-5334	832-969-8145
Robert Glover	EHS Professional	575-703-5712	575-703-5712
Lane Frank	Lead EHS	580-579-7052	580-579-7052
Rickey Porter	Lead EHS	903-720-8315	903-720-8315
Ronnie Handy	Lead EHS	918-839-2046	918-839-2046
Brock Vise	Lead EHS	918-413-3291	918-413-3291

Agency Call List		
<u>Lea County (575)</u>	Hobbs	
	Lea County Communication Authority	397-9265
	State Police	885-3138
	City Police	397-9265
	Sheriff's Office	396-3611
	Ambulance	911
	Fire Department	397-9308
	LEPC (Local Emergency Planning Committee)	393-2870
	NMOCD	393-6161
	US Bureau of Land Management (Closed)	393-0002
<u>Eddy County (575)</u>	Carlsbad	
	State Police	885-3137
	City Police	885-2111
	Sheriff's Office	887-7551
	Ambulance	911
	Fire Department	885-3125
	LEPC (Local Emergency Planning Committee)	887-3798
	US Bureau of Land Management	234-5972
	NM Emergency Response Commission (Santa Fe)	(505) 476-9600
	24 HR	(505) 827-9126
	National Emergency Response Center	(800) 424-8802
	National Pollution Control Center: Direct	(703) 872-6000
	For Oil Spills	(800) 280-7118
	Emergency Services	
	Wild Well Control	(281) 784-4700
	Cudd Pressure Control	(915) 699-0139 (915) 563-3356
	Halliburton	(575) 746-2757
	B. J. Services	(575) 746-3569
	Native Air – Emergency Helicopter – Hobbs	(575) 347-9836
	For Air Ambulance - Eddy County Dispatch	(575)-616-7155
<u>Give GPS position:</u>	For Air Ambulance - Lea County (LCCA)	(575)-397-9265
	Poison Control (24/7)	(800) 222-1222
	Oil & Gas Pipeline 24 Hour Service	(800) 364-4366
	NOAA – Website - www.nhc.noaa.gov	
	National Pollution Control Center	202-795-6958
	NPCC – Oil Spills	800-280-7118

Prepared in conjunction with
Dave Small



Devon Energy - Well Pad Rig Location Layout Safety Equipment Location

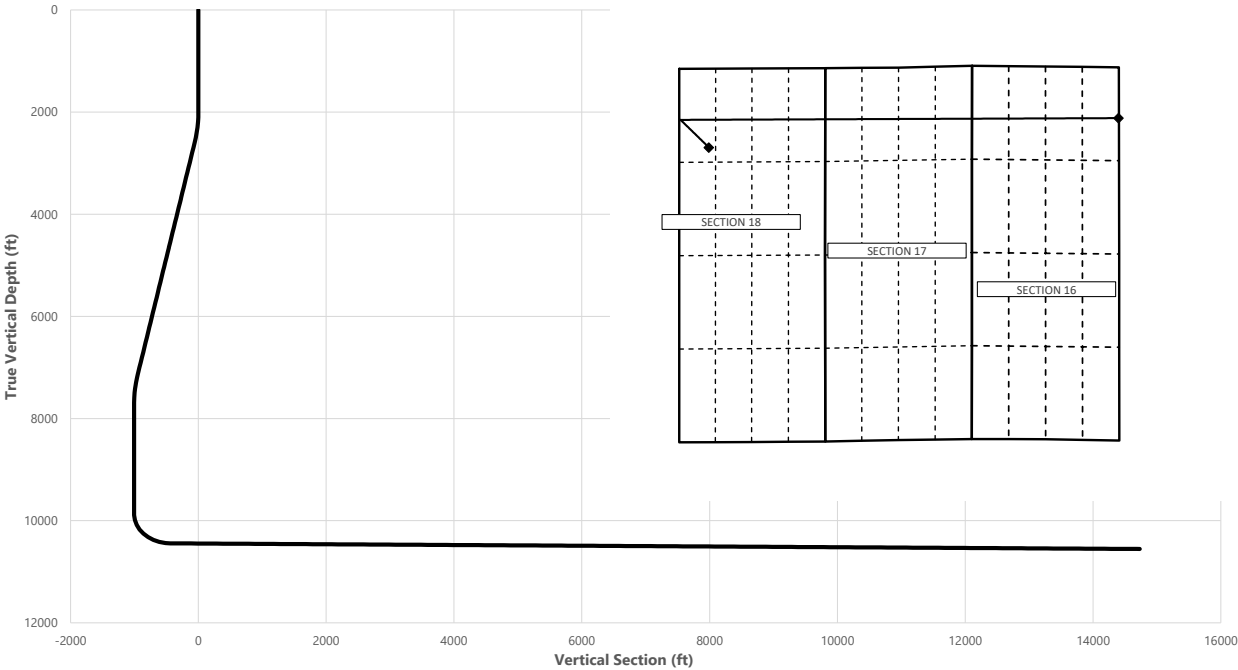




Well: MIMOSA 18-16 STATE COM 1H
County: Eddy
Wellbore: Permit Plan
Design: Permit Plan #1

Geodetic System: US State Plane 1983
Datum: North American Datum 1927
Ellipsoid: Clarke 1866
Zone: 3001 - NM East (NAD83)

MD	INC	AZI	TVD	NS	EW	VS	DLS	Comment
(ft)	(°)	(°)	(ft)	(ft)	(ft)	(ft)	(°/100ft)	
0.00	0.00	0.00	0.00	0.00	0.00	0.00	0.00	SHL
2000.00	0.00	291.00	2000.00	0.00	0.00	0.00	0.00	Start Tangent
2600.00	12.00	291.00	2595.62	22.43	-58.44	-57.79	2.00	Hold Tangent
7240.14	12.00	291.00	7134.37	368.17	-959.11	-948.35	0.00	Drop to Vertical
7840.14	0.00	291.00	7729.99	390.60	-1017.55	-1006.14	2.00	Hold Vertical
9981.21	0.00	89.91	9871.06	390.60	-1017.55	-1006.14	0.00	KOP
10877.06	89.58	89.91	10444.00	391.49	-448.75	-437.53	10.00	Landing Point
26051.59	89.58	89.91	10554.00	415.33	14725.37	14731.23	0.00	BHL



Key Depths	MD	TVD
	(ft)	(ft)
Rustler	304.00	304.00
Salt	412.00	412.00
Base of Salt	1680.00	1680.00
Capitan Reef Top	2157.08	2157.00
Delaware	3733.14	3704.00
Cherry Canyon	4706.41	4656.00
Brushy Canyon	5159.30	5099.00
1st Bone Spring Lime	6359.53	6273.00
Bone Spring 1st	7517.47	7408.00
Bone Spring 2nd	8298.15	8188.00
3rd Bone Spring Lime	8619.15	8509.00
Bone Spring 3rd	9286.15	9176.00
Wolfcamp / Point of Penetration	9751.15	9641.00
exit	25971.59	10553.44

SHL
KOP
Point of Penetration
Exit
BHL

MD	TVD	Lat	Long	Section Footages
(ft)	(ft)	(°)	(°)	
0.00	0.00	32.5775	-104.0165	1115' FNL, 1066' FWL of Sec 18 in T20S, R30E
9981.21	9871.06	32.5786	-104.0198	721' FNL, 48' FWL of Sec 18 in T20S, R30E
9751.15	9641.00	32.5787	-104.0196	720' FNL, 100' FWL of Sec 18 in T20S, R30E
25971.59	10553.44	32.5786	-103.9689	720' FNL, 100' FEL of Sec 16 in T20S, R30E
26051.59	10554.00	32.5785	-103.9687	720' FNL, 20' FEL of Sec 16 in T20S, R30E

	Y	X	MD
KOP	574389	637937	9981.21

MIMOSA 18-16 STATE COM 1H



Well: MIMOSA 18-16 STATE COM 1H
County: Eddy
Wellbore: Permit Plan
Design: Permit Plan #1

Geodetic System: US State Plane 1983
Datum: North American Datum 1927
Ellipsoid: Clarke 1866
Zone: 3001 - NM East (NAD83)

MD	INC	AZI	TVD	NS	EW	VS	DLS	Comment
(ft)	(°)	(°)	(ft)	(ft)	(ft)	(ft)	(°/100ft)	
0.00	0.00	0.00	0.00	0.00	0.00	0.00	0.00	SHL
100.00	0.00	291.00	100.00	0.00	0.00	0.00	0.00	
200.00	0.00	291.00	200.00	0.00	0.00	0.00	0.00	
300.00	0.00	291.00	300.00	0.00	0.00	0.00	0.00	
304.00	0.00	291.00	304.00	0.00	0.00	0.00	0.00	Rustler
400.00	0.00	291.00	400.00	0.00	0.00	0.00	0.00	
412.00	0.00	291.00	412.00	0.00	0.00	0.00	0.00	Salt
500.00	0.00	291.00	500.00	0.00	0.00	0.00	0.00	
600.00	0.00	291.00	600.00	0.00	0.00	0.00	0.00	
700.00	0.00	291.00	700.00	0.00	0.00	0.00	0.00	
800.00	0.00	291.00	800.00	0.00	0.00	0.00	0.00	
900.00	0.00	291.00	900.00	0.00	0.00	0.00	0.00	
1000.00	0.00	291.00	1000.00	0.00	0.00	0.00	0.00	
1100.00	0.00	291.00	1100.00	0.00	0.00	0.00	0.00	
1200.00	0.00	291.00	1200.00	0.00	0.00	0.00	0.00	
1300.00	0.00	291.00	1300.00	0.00	0.00	0.00	0.00	
1400.00	0.00	291.00	1400.00	0.00	0.00	0.00	0.00	
1500.00	0.00	291.00	1500.00	0.00	0.00	0.00	0.00	
1600.00	0.00	291.00	1600.00	0.00	0.00	0.00	0.00	
1680.00	0.00	291.00	1680.00	0.00	0.00	0.00	0.00	Base of Salt
1700.00	0.00	291.00	1700.00	0.00	0.00	0.00	0.00	
1800.00	0.00	291.00	1800.00	0.00	0.00	0.00	0.00	
1900.00	0.00	291.00	1900.00	0.00	0.00	0.00	0.00	
2000.00	0.00	291.00	2000.00	0.00	0.00	0.00	0.00	Start Tangent
2100.00	2.00	291.00	2099.98	0.63	-1.63	-1.61	2.00	
2157.08	3.14	291.00	2157.00	1.54	-4.02	-3.97	2.00	Capitan Reef Top
2200.00	4.00	291.00	2199.84	2.50	-6.51	-6.44	2.00	
2300.00	6.00	291.00	2299.45	5.62	-14.65	-14.49	2.00	
2400.00	8.00	291.00	2398.70	9.99	-26.03	-25.74	2.00	
2500.00	10.00	291.00	2497.47	15.60	-40.63	-40.18	2.00	
2600.00	12.00	291.00	2595.62	22.43	-58.44	-57.79	2.00	Hold Tangent
2700.00	12.00	291.00	2693.44	29.89	-77.85	-76.98	0.00	
2800.00	12.00	291.00	2791.25	37.34	-97.26	-96.17	0.00	
2900.00	12.00	291.00	2889.07	44.79	-116.68	-115.37	0.00	
3000.00	12.00	291.00	2986.88	52.24	-136.09	-134.56	0.00	
3100.00	12.00	291.00	3084.70	59.69	-155.50	-153.75	0.00	
3200.00	12.00	291.00	3182.51	67.14	-174.91	-172.94	0.00	
3300.00	12.00	291.00	3280.33	74.59	-194.32	-192.14	0.00	
3400.00	12.00	291.00	3378.14	82.04	-213.73	-211.33	0.00	
3500.00	12.00	291.00	3475.96	89.49	-233.14	-230.52	0.00	
3600.00	12.00	291.00	3573.77	96.94	-252.55	-249.71	0.00	
3700.00	12.00	291.00	3671.59	104.39	-271.96	-268.91	0.00	
3733.14	12.00	291.00	3704.00	106.86	-278.39	-275.27	0.00	Delaware
3800.00	12.00	291.00	3769.40	111.84	-291.37	-288.10	0.00	
3900.00	12.00	291.00	3867.22	119.30	-310.78	-307.29	0.00	
4000.00	12.00	291.00	3965.03	126.75	-330.19	-326.48	0.00	
4100.00	12.00	291.00	4062.84	134.20	-349.60	-345.68	0.00	
4200.00	12.00	291.00	4160.66	141.65	-369.01	-364.87	0.00	
4300.00	12.00	291.00	4258.47	149.10	-388.42	-384.06	0.00	
4400.00	12.00	291.00	4356.29	156.55	-407.83	-403.25	0.00	
4500.00	12.00	291.00	4454.10	164.00	-427.24	-422.45	0.00	
4600.00	12.00	291.00	4551.92	171.45	-446.65	-441.64	0.00	
4700.00	12.00	291.00	4649.73	178.90	-466.06	-460.83	0.00	
4706.41	12.00	291.00	4656.00	179.38	-467.30	-462.06	0.00	Cherry Canyon
4800.00	12.00	291.00	4747.55	186.35	-485.47	-480.02	0.00	
4900.00	12.00	291.00	4845.36	193.80	-504.88	-499.22	0.00	
5000.00	12.00	291.00	4943.18	201.25	-524.29	-518.41	0.00	
5100.00	12.00	291.00	5040.99	208.70	-543.70	-537.60	0.00	
5159.30	12.00	291.00	5099.00	213.12	-555.21	-548.98	0.00	Brushy Canyon
5200.00	12.00	291.00	5138.81	216.16	-563.11	-556.79	0.00	
5300.00	12.00	291.00	5236.62	223.61	-582.52	-575.99	0.00	
5400.00	12.00	291.00	5334.44	231.06	-601.93	-595.18	0.00	
5500.00	12.00	291.00	5432.25	238.51	-621.34	-614.37	0.00	
5600.00	12.00	291.00	5530.07	245.96	-640.75	-633.56	0.00	
5700.00	12.00	291.00	5627.88	253.41	-660.16	-652.76	0.00	
5800.00	12.00	291.00	5725.70	260.86	-679.57	-671.95	0.00	
5900.00	12.00	291.00	5823.51	268.31	-698.98	-691.14	0.00	
6000.00	12.00	291.00	5921.33	275.76	-718.39	-710.33	0.00	
6100.00	12.00	291.00	6019.14	283.21	-737.80	-729.53	0.00	
6200.00	12.00	291.00	6116.95	290.66	-757.21	-748.72	0.00	

MIMOSA 18-16 STATE COM 1H



Well: MIMOSA 18-16 STATE COM 1H
County: Eddy
Wellbore: Permit Plan
Design: Permit Plan #1

Geodetic System: US State Plane 1983
Datum: North American Datum 1927
Ellipsoid: Clarke 1866
Zone: 3001 - NM East (NAD83)

MD (ft)	INC (°)	AZI (°)	TVD (ft)	NS (ft)	EW (ft)	VS (ft)	DLS (°/100ft)	Comment
6300.00	12.00	291.00	6214.77	298.11	-776.62	-767.91	0.00	
6359.53	12.00	291.00	6273.00	302.55	-788.18	-779.34	0.00	1st Bone Spring Lime
6400.00	12.00	291.00	6312.58	305.57	-796.03	-787.10	0.00	
6500.00	12.00	291.00	6410.40	313.02	-815.44	-806.30	0.00	
6600.00	12.00	291.00	6508.21	320.47	-834.85	-825.49	0.00	
6700.00	12.00	291.00	6606.03	327.92	-854.26	-844.68	0.00	
6800.00	12.00	291.00	6703.84	335.37	-873.67	-863.87	0.00	
6900.00	12.00	291.00	6801.66	342.82	-893.08	-883.07	0.00	
7000.00	12.00	291.00	6899.47	350.27	-912.50	-902.26	0.00	
7100.00	12.00	291.00	6997.29	357.72	-931.91	-921.45	0.00	
7200.00	12.00	291.00	7095.10	365.17	-951.32	-940.64	0.00	
7240.14	12.00	291.00	7134.37	368.17	-959.11	-948.35	0.00	Drop to Vertical
7300.00	10.80	291.00	7193.04	372.41	-970.15	-959.27	2.00	
7400.00	8.80	291.00	7291.58	378.51	-986.05	-974.99	2.00	
7500.00	6.80	291.00	7390.65	383.37	-998.72	-987.52	2.00	
7517.47	6.45	291.00	7408.00	384.10	-1000.60	-989.38	2.00	Bone Spring 1st
7600.00	4.80	291.00	7490.13	387.00	-1008.16	-996.85	2.00	
7700.00	2.80	291.00	7589.90	389.37	-1014.35	-1002.97	2.00	
7800.00	0.80	291.00	7689.85	390.50	-1017.29	-1005.88	2.00	
7840.14	0.00	291.00	7729.99	390.60	-1017.55	-1006.14	2.00	Hold Vertical
7900.00	0.00	89.91	7789.85	390.60	-1017.55	-1006.14	0.00	
8000.00	0.00	89.91	7889.85	390.60	-1017.55	-1006.14	0.00	
8100.00	0.00	89.91	7989.85	390.60	-1017.55	-1006.14	0.00	
8200.00	0.00	89.91	8089.85	390.60	-1017.55	-1006.14	0.00	
8298.15	0.00	89.91	8188.00	390.60	-1017.55	-1006.14	0.00	Bone Spring 2nd
8300.00	0.00	89.91	8189.85	390.60	-1017.55	-1006.14	0.00	
8400.00	0.00	89.91	8289.85	390.60	-1017.55	-1006.14	0.00	
8500.00	0.00	89.91	8389.85	390.60	-1017.55	-1006.14	0.00	
8600.00	0.00	89.91	8489.85	390.60	-1017.55	-1006.14	0.00	
8619.15	0.00	89.91	8509.00	390.60	-1017.55	-1006.14	0.00	3rd Bone Spring Lime
8700.00	0.00	89.91	8589.85	390.60	-1017.55	-1006.14	0.00	
8800.00	0.00	89.91	8689.85	390.60	-1017.55	-1006.14	0.00	
8900.00	0.00	89.91	8789.85	390.60	-1017.55	-1006.14	0.00	
9000.00	0.00	89.91	8889.85	390.60	-1017.55	-1006.14	0.00	
9100.00	0.00	89.91	8989.85	390.60	-1017.55	-1006.14	0.00	
9200.00	0.00	89.91	9089.85	390.60	-1017.55	-1006.14	0.00	
9286.15	0.00	89.91	9176.00	390.60	-1017.55	-1006.14	0.00	Bone Spring 3rd
9300.00	0.00	89.91	9189.85	390.60	-1017.55	-1006.14	0.00	
9400.00	0.00	89.91	9289.85	390.60	-1017.55	-1006.14	0.00	
9500.00	0.00	89.91	9389.85	390.60	-1017.55	-1006.14	0.00	
9600.00	0.00	89.91	9489.85	390.60	-1017.55	-1006.14	0.00	
9700.00	0.00	89.91	9589.85	390.60	-1017.55	-1006.14	0.00	
9751.15	0.00	89.91	9641.00	390.60	-1017.55	-1006.14	0.00	Wolfcamp / Point of Penetration
9800.00	0.00	89.91	9689.85	390.60	-1017.55	-1006.14	0.00	
9900.00	0.00	89.91	9789.85	390.60	-1017.55	-1006.14	0.00	
9981.21	0.00	89.91	9871.06	390.60	-1017.55	-1006.14	0.00	KOP
10000.00	1.88	89.91	9889.84	390.60	-1017.24	-1005.83	10.00	
10100.00	11.88	89.91	9989.00	390.62	-1005.28	-993.87	10.00	
10200.00	21.88	89.91	10084.57	390.67	-976.28	-964.88	10.00	
10300.00	31.88	89.91	10173.65	390.74	-931.13	-919.74	10.00	
10400.00	41.88	89.91	10253.54	390.83	-871.19	-859.83	10.00	
10500.00	51.88	89.91	10321.81	390.95	-798.29	-786.96	10.00	
10600.00	61.88	89.91	10376.38	391.08	-714.65	-703.34	10.00	
10700.00	71.88	89.91	10415.60	391.22	-622.80	-611.52	10.00	
10800.00	81.88	89.91	10438.27	391.37	-525.53	-514.29	10.00	
10877.06	89.58	89.91	10444.00	391.49	-448.75	-437.53	10.00	Landing Point
10900.00	89.58	89.91	10444.17	391.53	-425.80	-414.60	0.00	
11000.00	89.58	89.91	10444.89	391.69	-325.81	-314.63	0.00	
11100.00	89.58	89.91	10445.62	391.85	-225.81	-214.67	0.00	
11200.00	89.58	89.91	10446.34	392.00	-125.81	-114.71	0.00	
11300.00	89.58	89.91	10447.07	392.16	-25.81	-14.75	0.00	
11400.00	89.58	89.91	10447.79	392.32	74.18	85.21	0.00	
11500.00	89.58	89.91	10448.52	392.47	174.18	185.18	0.00	
11600.00	89.58	89.91	10449.24	392.63	274.18	285.14	0.00	
11700.00	89.58	89.91	10449.97	392.79	374.17	385.10	0.00	
11800.00	89.58	89.91	10450.69	392.95	474.17	485.06	0.00	
11900.00	89.58	89.91	10451.42	393.10	574.17	585.02	0.00	
12000.00	89.58	89.91	10452.14	393.26	674.17	684.99	0.00	
12100.00	89.58	89.91	10452.87	393.42	774.16	784.95	0.00	
12200.00	89.58	89.91	10453.59	393.57	874.16	884.91	0.00	


MIMOSA 18-16 STATE COM 1H



Well: MIMOSA 18-16 STATE COM 1H
County: Eddy
Wellbore: Permit Plan
Design: Permit Plan #1

Geodetic System: US State Plane 1983
Datum: North American Datum 1927
Ellipsoid: Clarke 1866
Zone: 3001 - NM East (NAD83)

MD (ft)	INC (")	AZI (")	TVD (ft)	NS (ft)	EW (ft)	VS (ft)	DLS (°/100ft)	Comment
12300.00	89.58	89.91	10454.32	393.73	974.16	984.87	0.00	
12400.00	89.58	89.91	10455.04	393.89	1074.15	1084.83	0.00	
12500.00	89.58	89.91	10455.77	394.05	1174.15	1184.80	0.00	
12600.00	89.58	89.91	10456.49	394.20	1274.15	1284.76	0.00	
12700.00	89.58	89.91	10457.22	394.36	1374.15	1384.72	0.00	
12800.00	89.58	89.91	10457.94	394.52	1474.14	1484.68	0.00	
12900.00	89.58	89.91	10458.67	394.68	1574.14	1584.64	0.00	
13000.00	89.58	89.91	10459.39	394.83	1674.14	1684.60	0.00	
13100.00	89.58	89.91	10460.12	394.99	1774.14	1784.57	0.00	
13200.00	89.58	89.91	10460.84	395.15	1874.13	1884.53	0.00	
13300.00	89.58	89.91	10461.57	395.30	1974.13	1984.49	0.00	
13400.00	89.58	89.91	10462.29	395.46	2074.13	2084.45	0.00	
13500.00	89.58	89.91	10463.02	395.62	2174.12	2184.41	0.00	
13600.00	89.58	89.91	10463.74	395.78	2274.12	2284.38	0.00	
13700.00	89.58	89.91	10464.47	395.93	2374.12	2384.34	0.00	
13800.00	89.58	89.91	10465.19	396.09	2474.12	2484.30	0.00	
13900.00	89.58	89.91	10465.92	396.25	2574.11	2584.26	0.00	
14000.00	89.58	89.91	10466.64	396.40	2674.11	2684.22	0.00	
14100.00	89.58	89.91	10467.37	396.56	2774.11	2784.19	0.00	
14200.00	89.58	89.91	10468.09	396.72	2874.11	2884.15	0.00	
14300.00	89.58	89.91	10468.82	396.88	2974.10	2984.11	0.00	
14400.00	89.58	89.91	10469.54	397.03	3074.10	3084.07	0.00	
14500.00	89.58	89.91	10470.27	397.19	3174.10	3184.03	0.00	
14600.00	89.58	89.91	10470.99	397.35	3274.09	3284.00	0.00	
14700.00	89.58	89.91	10471.72	397.50	3374.09	3383.96	0.00	
14800.00	89.58	89.91	10472.44	397.66	3474.09	3483.92	0.00	
14900.00	89.58	89.91	10473.17	397.82	3574.09	3583.88	0.00	
15000.00	89.58	89.91	10473.89	397.98	3674.08	3683.84	0.00	
15100.00	89.58	89.91	10474.62	398.13	3774.08	3783.81	0.00	
15200.00	89.58	89.91	10475.34	398.29	3874.08	3883.77	0.00	
15300.00	89.58	89.91	10476.07	398.45	3974.08	3983.73	0.00	
15400.00	89.58	89.91	10476.79	398.61	4074.07	4083.69	0.00	
15500.00	89.58	89.91	10477.52	398.76	4174.07	4183.65	0.00	
15600.00	89.58	89.91	10478.24	398.92	4274.07	4283.61	0.00	
15700.00	89.58	89.91	10478.97	399.08	4374.06	4383.58	0.00	
15800.00	89.58	89.91	10479.69	399.23	4474.06	4483.54	0.00	
15900.00	89.58	89.91	10480.42	399.39	4574.06	4583.50	0.00	
16000.00	89.58	89.91	10481.14	399.55	4674.06	4683.46	0.00	
16100.00	89.58	89.91	10481.87	399.71	4774.05	4783.42	0.00	
16200.00	89.58	89.91	10482.59	399.86	4874.05	4883.39	0.00	
16300.00	89.58	89.91	10483.32	400.02	4974.05	4983.35	0.00	
16400.00	89.58	89.91	10484.04	400.18	5074.04	5083.31	0.00	
16500.00	89.58	89.91	10484.77	400.33	5174.04	5183.27	0.00	
16600.00	89.58	89.91	10485.49	400.49	5274.04	5283.23	0.00	
16700.00	89.58	89.91	10486.22	400.65	5374.04	5383.20	0.00	
16800.00	89.58	89.91	10486.94	400.81	5474.03	5483.16	0.00	
16900.00	89.58	89.91	10487.67	400.96	5574.03	5583.12	0.00	
17000.00	89.58	89.91	10488.39	401.12	5674.03	5683.08	0.00	
17100.00	89.58	89.91	10489.12	401.28	5774.03	5783.04	0.00	
17200.00	89.58	89.91	10489.84	401.44	5874.02	5883.01	0.00	
17300.00	89.58	89.91	10490.57	401.59	5974.02	5982.97	0.00	
17400.00	89.58	89.91	10491.29	401.75	6074.02	6082.93	0.00	
17500.00	89.58	89.91	10492.02	401.91	6174.01	6182.89	0.00	
17600.00	89.58	89.91	10492.74	402.06	6274.01	6282.85	0.00	
17700.00	89.58	89.91	10493.47	402.22	6374.01	6382.82	0.00	
17800.00	89.58	89.91	10494.19	402.38	6474.01	6482.78	0.00	
17900.00	89.58	89.91	10494.92	402.54	6574.00	6582.74	0.00	
18000.00	89.58	89.91	10495.64	402.69	6674.00	6682.70	0.00	
18100.00	89.58	89.91	10496.37	402.85	6774.00	6782.66	0.00	
18200.00	89.58	89.91	10497.09	403.01	6874.00	6882.63	0.00	
18300.00	89.58	89.91	10497.82	403.16	6973.99	6982.59	0.00	
18400.00	89.58	89.91	10498.54	403.32	7073.99	7082.55	0.00	
18500.00	89.58	89.91	10499.27	403.48	7173.99	7182.51	0.00	
18600.00	89.58	89.91	10499.99	403.64	7273.98	7282.47	0.00	
18700.00	89.58	89.91	10500.72	403.79	7373.98	7382.43	0.00	
18800.00	89.58	89.91	10501.44	403.95	7473.98	7482.40	0.00	
18900.00	89.58	89.91	10502.17	404.11	7573.98	7582.36	0.00	
19000.00	89.58	89.91	10502.89	404.26	7673.97	7682.32	0.00	
19100.00	89.58	89.91	10503.62	404.42	7773.97	7782.28	0.00	
19200.00	89.58	89.91	10504.34	404.58	7873.97	7882.24	0.00	

		Well: MIMOSA 18-16 STATE COM 1H					Geodetic System: US State Plane 1983		
		County: Eddy					Datum: North American Datum 1927		
		Wellbore: Permit Plan					Ellipsoid: Clarke 1866		
		Design: Permit Plan #1					Zone: 3001 - NM East (NAD83)		
MD	INC	AZI	TVD	NS	EW	VS	DLS	Comment	
(ft)	(°)	(°)	(ft)	(ft)	(ft)	(ft)	(°/100ft)		
19300.00	89.58	89.91	10505.07	404.74	7973.97	7982.21	0.00		
19400.00	89.58	89.91	10505.79	404.89	8073.96	8082.17	0.00		
19500.00	89.58	89.91	10506.52	405.05	8173.96	8182.13	0.00		
19600.00	89.58	89.91	10507.24	405.21	8273.96	8282.09	0.00		
19700.00	89.58	89.91	10507.97	405.37	8373.95	8382.05	0.00		
19800.00	89.58	89.91	10508.69	405.52	8473.95	8482.02	0.00		
19900.00	89.58	89.91	10509.42	405.68	8573.95	8581.98	0.00		
20000.00	89.58	89.91	10510.14	405.84	8673.95	8681.94	0.00		
20100.00	89.58	89.91	10510.87	405.99	8773.94	8781.90	0.00		
20200.00	89.58	89.91	10511.59	406.15	8873.94	8881.86	0.00		
20300.00	89.58	89.91	10512.32	406.31	8973.94	8981.83	0.00		
20400.00	89.58	89.91	10513.04	406.47	9073.93	9081.79	0.00		
20500.00	89.58	89.91	10513.77	406.62	9173.93	9181.75	0.00		
20600.00	89.58	89.91	10514.49	406.78	9273.93	9281.71	0.00		
20700.00	89.58	89.91	10515.22	406.94	9373.93	9381.67	0.00		
20800.00	89.58	89.91	10515.94	407.09	9473.92	9481.64	0.00		
20900.00	89.58	89.91	10516.67	407.25	9573.92	9581.60	0.00		
21000.00	89.58	89.91	10517.39	407.41	9673.92	9681.56	0.00		
21100.00	89.58	89.91	10518.12	407.57	9773.92	9781.52	0.00		
21200.00	89.58	89.91	10518.84	407.72	9873.91	9881.48	0.00		
21300.00	89.58	89.91	10519.57	407.88	9973.91	9981.44	0.00		
21400.00	89.58	89.91	10520.29	408.04	10073.91	10081.41	0.00		
21500.00	89.58	89.91	10521.02	408.19	10173.90	10181.37	0.00		
21600.00	89.58	89.91	10521.74	408.35	10273.90	10281.33	0.00		
21700.00	89.58	89.91	10522.47	408.51	10373.90	10381.29	0.00		
21800.00	89.58	89.91	10523.19	408.67	10473.90	10481.25	0.00		
21900.00	89.58	89.91	10523.92	408.82	10573.89	10581.22	0.00		
22000.00	89.58	89.91	10524.64	408.98	10673.89	10681.18	0.00		
22100.00	89.58	89.91	10525.37	409.14	10773.89	10781.14	0.00		
22200.00	89.58	89.91	10526.09	409.30	10873.89	10881.10	0.00		
22300.00	89.58	89.91	10526.82	409.45	10973.88	10981.06	0.00		
22400.00	89.58	89.91	10527.54	409.61	11073.88	11081.03	0.00		
22500.00	89.58	89.91	10528.27	409.77	11173.88	11180.99	0.00		
22600.00	89.58	89.91	10528.99	409.92	11273.87	11280.95	0.00		
22700.00	89.58	89.91	10529.72	410.08	11373.87	11380.91	0.00		
22800.00	89.58	89.91	10530.45	410.24	11473.87	11480.87	0.00		
22900.00	89.58	89.91	10531.17	410.40	11573.87	11580.84	0.00		
23000.00	89.58	89.91	10531.90	410.55	11673.86	11680.80	0.00		
23100.00	89.58	89.91	10532.62	410.71	11773.86	11780.76	0.00		
23200.00	89.58	89.91	10533.35	410.87	11873.86	11880.72	0.00		
23300.00	89.58	89.91	10534.07	411.02	11973.85	11980.68	0.00		
23400.00	89.58	89.91	10534.80	411.18	12073.85	12080.65	0.00		
23500.00	89.58	89.91	10535.52	411.34	12173.85	12180.61	0.00		
23600.00	89.58	89.91	10536.25	411.50	12273.85	12280.57	0.00		
23700.00	89.58	89.91	10536.97	411.65	12373.84	12380.53	0.00		
23800.00	89.58	89.91	10537.70	411.81	12473.84	12480.49	0.00		
23900.00	89.58	89.91	10538.42	411.97	12573.84	12580.45	0.00		
24000.00	89.58	89.91	10539.15	412.13	12673.84	12680.42	0.00		
24100.00	89.58	89.91	10539.87	412.28	12773.83	12780.38	0.00		
24200.00	89.58	89.91	10540.60	412.44	12873.83	12880.34	0.00		
24300.00	89.58	89.91	10541.32	412.60	12973.83	12980.30	0.00		
24400.00	89.58	89.91	10542.05	412.75	13073.82	13080.26	0.00		
24500.00	89.58	89.91	10542.77	412.91	13173.82	13180.23	0.00		
24600.00	89.58	89.91	10543.50	413.07	13273.82	13280.19	0.00		
24700.00	89.58	89.91	10544.22	413.23	13373.82	13380.15	0.00		
24800.00	89.58	89.91	10544.95	413.38	13473.81	13480.11	0.00		
24900.00	89.58	89.91	10545.67	413.54	13573.81	13580.07	0.00		
25000.00	89.58	89.91	10546.40	413.70	13673.81	13680.04	0.00		
25100.00	89.58	89.91	10547.12	413.85	13773.81	13780.00	0.00		
25200.00	89.58	89.91	10547.85	414.01	13873.80	13879.96	0.00		
25300.00	89.58	89.91	10548.57	414.17	13973.80	13979.92	0.00		
25400.00	89.58	89.91	10549.30	414.33	14073.80	14079.88	0.00		
25500.00	89.58	89.91	10550.02	414.48	14173.79	14179.85	0.00		
25600.00	89.58	89.91	10550.75	414.64	14273.79	14279.81	0.00		
25700.00	89.58	89.91	10551.47	414.80	14373.79	14379.77	0.00		
25800.00	89.58	89.91	10552.20	414.95	14473.79	14479.73	0.00		
25900.00	89.58	89.91	10552.92	415.11	14573.78	14579.69	0.00		
25971.59	89.58	89.91	10553.44	415.22	14645.37	14651.26	0.00	exit	exit
26000.00	89.58	89.91	10553.65	415.27	14673.78	14679.66	0.00		
26051.59	89.58	89.91	10554.00	415.33	14725.37	14731.23	0.00	BHL	BHL

1. Geologic Formations

TVD of target	10553	Pilot hole depth	N/A
MD at TD:	26052	Deepest expected fresh water	

Basin

Formation	Depth (TVD) from KB	Water/Mineral Bearing/Target Zone?	Hazards*
Rustler	304		
Salt	412		
Base of Salt	1680		
Capitan Reef Top	2157		
Delaware	3704		
Cherry Canyon	4656		
Brushy Canyon	5099		
1st Bone Spring Lime	6273		
Bone Spring 1st	7408		
Bone Spring 2nd	8188		
3rd Bone Spring Lime	8509		
Bone Spring 3rd	9176		
Wolfcamp	9641		

*H2S, water flows, loss of circulation, abnormal pressures, etc.

MIMOSA 18-16 STATE COM 1H

2. Casing Program (Primary Design)

Hole Size	Csg. Size	Wt (PPF)	Grade	Conn	Top (MD)	Bottom (MD)	Top (TVD)	Bottom (TVD)
17 1/2	13 3/8	54.5	J-55	BTC	0.0	329 MD	0	329 TVD
12 1/4	10 3/4	45.5	J-55	BTC SCC	0.0	1705 MD	0	1705 TVD
9 7/8	8 5/8	32.0	P110EC	MOFXL	0	3754 MD	0	3754 TVD
7 7/8	5 1/2	20.0	P110	DWC/C IS+	0	26052 MD	0	10553 TVD

- All casing strings will be tested in accordance with 43 CFR 3172. Must have table for contingency casing.
- The Rustler top will be validated via drilling parameters (i.e. reduction in ROP), and the surface casing setting depth will be revised accordingly. In addition, surface casing will be set a minimum of 25' above the top of the salt.

3. Cementing Program (Primary Design)

Casing	# Sks	TOC	Wt. (lb/gal)	Yld (ft ³ /sack)	Slurry Description
Surface	277	0	13.2	1.44	Lead: Class C Cement + additives
Int	91	0	9	3.27	Lead: Class C Cement + additives
	101	1205	13.2	1.44	Tail: Class H / C + additives
Int 1	127	0	9	3.27	Lead: Class C Cement + additives
	67	3254	13.2	1.44	Tail: Class H / C + additives
Production	117	7981	9	3.27	Lead: Class H / C + additives
	2127	9981	13.2	1.44	Tail: Class H / C + additives

Assuming no returns are established while drilling, Devon requests to pump a two stage cement job on the intermediate casing string with the first stage being pumped conventionally with the calculated top of cement at the Capitan and the second stage performed as a bradenhead squeeze with planned cement from the Capitan to surface. Devon will report to the BLM the volume of fluid (limited to 1 bbls) used to flush intermediate casing valves following backside cementing procedures. The final cement top will be verified by Echo-meter. Devon will include the Echo-meter verified fluid top and the volume of displacement fluid above the cement slurry in the annulus in all post-drill sundries on wells utilizing this cement program.

Casing String	% Excess
Surface	50%
Intermediate and Intermediate 1	30%
Intermediate 1 (Two Stage)	25%
Prod	10%

4. Pressure Control Equipment (Four String Design)

BOP installed and tested before drilling which hole?		Size?	Min. Required WP	Type	✓	Tested to:
Int	13-5/8"	5M	Annular		X	50% of rated working pressure
			Blind Ram		X	5M
			Pipe Ram			
			Double Ram		X	
			Other*			
Int 1	13-5/8"	5M	Annular (5M)		X	100% of rated working pressure
			Blind Ram		X	5M
			Pipe Ram			
			Double Ram		X	
			Other*			
Production	13-5/8"	5M	Annular (5M)		X	100% of rated working pressure
			Blind Ram		X	5M
			Pipe Ram			
			Double Ram		X	
			Other*			
N	A variance is requested for the use of a diverter on the surface casing. See attached for schematic.					
N	A variance is requested to run a 5 M annular on a 10M system					

5. Mud Program (Four String Design)

Section	Type	Weight (ppg)
Surface	WBM	8.5-9
Intermediate	DBE / Cut Brine	10-10.5
Intermediate 1	WBM	8.5-9
Production	OBM	10-10.5

Sufficient mud materials to maintain mud properties and meet minimum lost circulation and weight increase requirements will be kept on location at all times.

What will be used to monitor the loss or gain of fluid?	PVT/Pason/Visual Monitoring
---	-----------------------------

6. Logging and Testing Procedures**Logging, Coring and Testing**

X	Will run GR/CNL from TD to surface (horizontal well - vertical portion of hole). Stated logs run will be in the Completion Report and submitted to the BLM.
	No logs are planned based on well control or offset log information.
	Drill stem test? If yes, explain.
	Coring? If yes, explain.

Additional logs planned		Interval
	Resistivity	Int. shoe to KOP
	Density	Int. shoe to KOP
X	CBL	Production casing
X	Mud log	Intermediate shoe to TD
	PEX	

7. Drilling Conditions

Condition	Specify what type and where?
BH pressure at deepest TVD	5762
Abnormal temperature	No

Mitigation measure for abnormal conditions. Describe. Lost circulation material/sweeps/mud scavengers.

Hydrogen Sulfide (H₂S) monitors will be installed prior to drilling out the surface shoe. If H₂S is detected in concentrations greater than 100 ppm, the operator will comply with the provisions of 43 CFR 3176.. If Hydrogen Sulfide is encountered measured values and formations will be provided to the BLM.

N	H ₂ S is present
Y	H ₂ S plan attached.

8. Other facets of operation

Is this a walking operation? Potentially

- 1 If operator elects, drilling rig will batch drill the surface holes and run/cement surface casing; walking the rig to next wells on the pad.
- 2 The drilling rig will then batch drill the intermediate sections and run/cement intermediate casing; the wellbore will be isolated with a blind flange and pressure gauge installed for monitoring the well before walking to the next well.
- 3 The drilling rig will then batch drill the production hole sections on the wells with OBM, run/cement production casing, and install TA caps or tubing heads for completions.

NOTE: During batch operations the drilling rig will be moved from well to well however, it will not be removed from the pad until all wells have production casing run/cemented.

Will be pre-setting casing? Potentially

- 1 Spudder rig will move in and batch drill surface hole.
 - a. Rig will utilize fresh water based mud to drill surface hole to TD. Solids control will be handled entirely on a closed loop basis.,
- 2 After drilling the surface hole section, the spudder rig will run casing and cement following all of the applicable rules and regulations (43 CFR 3172, all COAs and NMOCD regulations).
- 3 The wellhead will be installed and tested once the surface casing is cut off and the WOC time has been reached.
- 4 A blind flange with the same pressure rating as the wellhead will be installed to seal the wellbore. Pressure will be monitored with a pressure gauge installed on the wellhead.
- 5 Spudder rig operations is expected to take 4-5 days per well on a multi-well pa.
- 6 The NMOCD will be contacted and notified 24 hours prior to commencing spudder rig operations.
- 7 Drilling operations will be performed with drilling rig. At that time an approved BOP stack will be nipped up and tested on the wellhead before drilling operations commences on each well.
 - a. The NMOCD will be contacted / notified 24 hours before the drilling rig moves back on to the pad with the pre-set surface casing.

Attachments

<u>X</u>	Directional Plan
_____	Other, describe