

Submit a Copy To Appropriate District
Office
District I – (575) 393-6161
1625 N. French Dr., Hobbs, NM 88240
District II – (575) 748-1283
811 S. First St., Artesia, NM 88210
District III – (505) 334-6178
1000 Rio Brazos Rd., Aztec, NM 87410
District IV – (505) 476-3460
1220 S. St. Francis Dr., Santa Fe, NM
87505

State of New Mexico
Energy, Minerals and Natural Resources

Form C-103
Revised July 18, 2013

OIL CONSERVATION DIVISION
1220 South St. Francis Dr.
Santa Fe, NM 87505

SUNDRY NOTICES AND REPORTS ON WELLS (DO NOT USE THIS FORM FOR PROPOSALS TO DRILL OR TO DEEPEN OR PLUG BACK TO A DIFFERENT RESERVOIR. USE "APPLICATION FOR PERMIT" (FORM C-101) FOR SUCH PROPOSALS.)		WELL API NO.
1. Type of Well: Oil Well <input type="checkbox"/> Gas Well <input type="checkbox"/> Other <input type="checkbox"/>		5. Indicate Type of Lease STATE <input type="checkbox"/> FEE <input type="checkbox"/>
2. Name of Operator		6. State Oil & Gas Lease No.
3. Address of Operator		7. Lease Name or Unit Agreement Name
4. Well Location Unit Letter _____: _____ feet from the _____ line and _____ feet from the _____ line Section _____ Township _____ Range _____ NMPM _____ County _____		8. Well Number
		9. OGRID Number
		10. Pool name or Wildcat
11. Elevation (Show whether DR, RKB, RT, GR, etc.)		

12. Check Appropriate Box to Indicate Nature of Notice, Report or Other Data

NOTICE OF INTENTION TO:		SUBSEQUENT REPORT OF:	
PERFORM REMEDIAL WORK <input type="checkbox"/>	PLUG AND ABANDON <input type="checkbox"/>	REMEDIAL WORK <input type="checkbox"/>	ALTERING CASING <input type="checkbox"/>
TEMPORARILY ABANDON <input type="checkbox"/>	CHANGE PLANS <input type="checkbox"/>	COMMENCE DRILLING OPNS. <input type="checkbox"/>	P AND A <input type="checkbox"/>
PULL OR ALTER CASING <input type="checkbox"/>	MULTIPLE COMPL <input type="checkbox"/>	CASING/CEMENT JOB <input type="checkbox"/>	
DOWNHOLE COMMINGLE <input type="checkbox"/>			
CLOSED-LOOP SYSTEM <input type="checkbox"/>			
OTHER: <input type="checkbox"/>		OTHER: <input type="checkbox"/>	

13. Describe proposed or completed operations. (Clearly state all pertinent details, and give pertinent dates, including estimated date of starting any proposed work). SEE RULE 19.15.7.14 NMAC. For Multiple Completions: Attach wellbore diagram of proposed completion or recompletion.

Spud Date:

Rig Release Date:

I hereby certify that the information above is true and complete to the best of my knowledge and belief.

SIGNATURE Kristen Houston TITLE _____ DATE _____

Type or print name _____ E-mail address: _____ PHONE: _____

For State Use Only

APPROVED BY: _____ TITLE _____ DATE _____

Conditions of Approval (if any):

Poker Lake Unit 32 Platy State SWD 001

30-015-46256

Workover Summary Report

5/17/24: MIRU, spot in equipment. RU WLU.

5/18/24: Set lub on well. Press test 1500 psi. MU 8 shot 1-9/16" rtg, 3.2 Gr, 25- .375" pent, .39 EJD. Rih and tie in 6' sub on seal assy (15,501'-507') Perf 4-1/2" BTC at 15,495'. Press change. Log out of 4-1/2" Verified holes. RDMO WLU.

5/19/24: Install Lit cap on tree. ND WH and remove. Clean 5-1/2" BTC and 5" BPVT NU 11" 10K BOP. Install 5" TWC. Press test 300 low 5 min. Good test 3000 high 10 min good. Retrieve TWC. Secure well for night.

5/20/24: PU on hanger. Land hanger. RU WLU. Received orders for pumping HCL. RD WLU. Shut in and secure.

5/21/24: pressure lines 3000 psi. Hook up to csg pump 5000 gals 15% hcl (90/10 acid/xylene blend). Displace w/390 bbls 10# brine. 5 min to 0 psi. Hook up to csg and flush csg w/100 bbls 10# brine.

5/22/24: Set CiFi at 8:00 witnessed by OS. Pump 430 bbls down csg. Pmp 3.5 bpm at 250 psi. Shut down. MIRU WLY PU and rih w/3.625" GR/JB. Run down and tag seal assy @ 15,513'. POOH LD Tools.

5/23/24: RU bails and elevators. PU on sting wt. Verify wt. and mark tbg. 210K-240K Run in w/FP tools Set up in top jt (#1) 4-1/2" at 10'680'. 100% free. Take FP tools. Take FP Readings in Btm Jt (#114). Shows to be 100% Free. Pooh. LD FP Tools. MU and Rih w/ 3-1/2" OD Jet Cutter. Set Wt at 205K, Correlate to Tbg Strip. Spot CCL at 14,387.5'. Cut 4-1/2" in Jt #89 at 14,400'. Recover 88 jts and 20' Cut of 4-1/2" Leaves 25 jts and 23' Cut of 4-1/2". Shut in and Secure Well.

5/24/24: MIRU Butch's Csg. LD Hanger w/ Pup Jt. Set CoFo at 8:00. Functions as Design. POOH Pooh as LD 5-1/2" 15# BTC IPC Tbg. LD 11" 10K x 5-1/2" BTC Hanger on 6" sub. LD 12' & 6' x 5-1/2" 17# BTC Pup Jts. LD 24-jts 5-1/2" 17# BTC IPC Tbg. CIRC Pump for displacement. Csg Filled up. Had some Biocide on wtr. Circ conv to clean up. POOH Cont Pooh as LD 5-1/2" BTC. Total 108 jts out today. Catwalk Broke Down. Secure Well. Meas as Pooh. Fish Left in Hole Cut off 4-1/2" 13.5# BTC 23.00' 25 Jts 4-1/2" 13.5# BTC 1075' 6' x 4-1/2" BTC Pup Jt 6.02' Halco Seal Assy 3.15' Halco BWR Perma WLS Pkr 4.62' 3.81' XN Profile Nipple 1.68' Magnum Dual Cer Disk 2.12' MEET AAR Well Shut in and Secure.

5/28/24: MIRU Csg. Set CoFo at 8:00. Functions as Design. Pumped 40 bbl's 10# brine dn csg. POOH LD 50-jts 5-1/2" 17# BTC IPC Tbg. Pump pipe dis. every 15 jnt's. CIRC TBG started blowing. SD Pump 80 bbl's dn tbg. POOH Cont Pooh as LD 5-1/2" BTC. Total 89 jts. TBG started blowing. Pump 10# brine 120 bbl's down tbg. 100 bbls down the csg. POOH Cont Pooh as LD 5-1/2" BTC. Well Shut in and Secure.

5/29/24: MIRU Butch's Csg. Set CoFo at 8:00. Functions as Design. Pumped 89 bbl's down tbg. Pumped 50 bbl's down CSG. POOH LD 258-jts 5-1/2" 17# BTC IPC Tbg/ 88 jnt's 4 1/2 IPC. 1 -19.6' cut piece 4 1/2 IPC. Pump pipe dis. every 15 jnt's. Well Shut in and Secure.

5/30/24: RIH w/ 5 3/4 wavy bottom burn shoe, lower extension w/ 4.81 ID, 5 3/4 Os w/ 4 1/2 grapple, 5 3/4 OD Upper extension 4.68 ID. Full drift Top sub 2.68 ID, 242 jnt's (7470') 3 1/2 PH6. Well Shut in and Secure.

5/31/24: RIH w/ 5 3/4 wavy bottom burn shoe, lower extension w/ 4.81 ID, 5 3/4 Os w/ 4 1/2 grapple, 5 3/4 OD Upper extension 4.68 ID. Full drift Top sub 2.68 ID, 464 jnt's (14,330') 3 1/2 PH6. Drill line is Damaged.

6/3/24: RIH w/ 5 3/4 wavy bottom burn shoe, lower extension w/ 4.81 ID, 5 3/4 Os w/ 4 1/2 grapple, 5 3/4 OD Upper extension 4.68 ID. Full drift Top sub 2.68 ID, 466 jnt's (14,402'). Tagged and marked on jnt 466. LD jnt. Hold point w/ HSE personnel and rig crew. MIRU PU swivel MILL Pump 1 bbl a min. Down tbg and csg. Tag TOF. Milled with little wt (Maybe 1k lbs) and 2-300 ft#'s of torque on swivel. Milled for 25 min. torque fell off to 0. Went down 1'. Pu 5'. Repeated 3 times rotating and not rotating with no tag. Continue rotating slowly over TOF tagged 2' in from TOF. Milled at this spot changing pump rt and swivel RPM. RPM went from slow rotation to 65 RPM-30 RPM. Pump rt went from 1 bbl down tbg to 5 bbl down tbg. Same on csg. Did see 150 psi increase on pump when going over TOF at 5 bbl a min. Worked at 14,404' for 3 hrs off and on for total turning time of 1 hr and 35 min. RDMO RD swivel. POOH TOOH w/ 137 jnt's. @10,187'. Well Shut in and Secure.

6/4/24: RIH TOO H w/ 5 3/4 wavy bottom burn shoe, lower extension w/ 4.81 ID, 5 3/4 Os w/ 4 1/2 grapple, 5 3/4 OD Upper extension 4.68 ID. Full drift Top sub 2.68 ID, 466 jnt's (14,402'). LD Wavy shoe and 5 3/4 OS. Appears we didn't get over the fish. Shoe shows fish to be off to the side a bit Well Shut in and Secure.

6/5/24: MU Skirted Mill of-- 5-3/4" x 5-1/8" Shoe w/ 5-15/16" x 5" Crown, 5" Concave Mill, Canfield Bushing, 4-1/8" LBS, 4-1/8" Jar, X-Over, 8' x 3-1/2" PH6 Sub. Rih w/ Skirted Mill Bha on 3-1/2" PH6, 12.95# S-135 Tbg. Run 348 jts 3-1/2". Touch and drop into 7" LT w/Jt 349 at 10,797'. Went to 10,824' w/ 349 in. Pull back up of of Liner, Clean. SDFN w/ 346 jts in, Shoe at 10,731'. Well Secure for Night.

6/6/24: Rih w/ 116 jts 3-1/2" Tbg. (Have 464 jts in Shoe at 14,374'. MIRU PU Pwr Swivel w/ JT #465 MILL Pump 1.5 bpm down csg. Ease down to tag TOF w/ Shoe at 14,402.5'. Wash over TOF. Swallow 5.5' to tag TOF w/ Skirted Mill at 14,403'. Mill to 14,404' w/ Skirted Mill. Mill Quit. Confer w/ Pat. Have 465-jt and 8" tbg sub in hole. RDMO RD Pwr Swivel. POOH LD 8' Sub and Jt # 465. Begin Pooh w/ Skrted Mill Pull 122 jts. 342 jts in. Shoe at 10,608'.

6/7/24: Cont Pooh w/ 3-1/2" PH6 Tbg, and Skirted Mill. Skirted Mill Assy. Marks indicate dressing of TOF. MU and Rih w/ OS Assy of 5-1/2" x 4-15/16" WP Shoe (5-15/16" x 4-7/8" Crown), 4-1/2" Fluted Bushing, 5-3/4" Lower OS Ext, 5-3/4" OS (4-1/2" GR), 5-3/4" Upper Ext, Full Open Top Sub, 6' x 3-1/2" PH6 Tbg Sub. Rih w/ OS Assy on 3-1/2" PH6. Run in w/ 164 Jts. Shoe Shoe at 5096'. Secure Well for Night

6/8/24: Cont Rih w/ OS Assy. Went into 7" LT w/ Light tag without issues. Run in to 376 jts. RIH Verify CoFo at 13:00. Functions as design. Cont Rih w/ Tbg and OS Assy. Have 464-jts in, OS at 14,353'. MIRU RU Pwr Swivel. Secure Well for Night.

6/9/24: Ease down and tag TOF w/ Shoe at 14,404'. Rotate and Drop Shoe over TOF. Down 2' to tagging TOF at Fluted Bushing. Unable to get Flute to Swallow Fish. Work for 2.5 hrs and made 1.5' and not able to get Flutes to Swallow over Fish. Set Down and Takes WT. Set 10K down. Would pull 10K over to Come off. Torq 500 - 3000 ft lbs. Not able to get latched onto Fish. Discuss w/ Clint. (Shoe at 14,406.5', Flute at 14.404') RDMO Hold Point. RD Pwr. LD 2 jts 3-1/2" PH6 Tbg. POOH Set CoFo High and Low. Verify. Pooh w/ 28 jts 3-1/2" Tbg. Shut down due to Lightening. Secure Well

6/11/24: Cont Pooh w/ 3-1/2" PH6 WS and 5-3/4" OS Assy Pulled 238 jts WS. POOH Finish Pooh. 464 jts in derrick TOOLS Break Down OS Assy. See light tag and able to get over w/ Shoe. Can see where TOF was setting on Fluted Bushing but unable to swallow to get to flute. Discuss w/ Pat. Shut in and Secure Well.

6/12/24: Swap out Drlg Line. Pour new cement socket. Hook to Drum. Run Blocks up and down. Good. Brakes good. PU on Tbg. Good. Secure Well.

6/13/24: Cont Rih w/ OS Bha of -- 5-3/4" x 5-1/8" Shoe (5-15-16" x 5-1/16" Crown, 4-1/2" Flute in ID), WP x BOS Bushing, 5-3/4" BOS Lower Ext, 5-3/4" BOS Bowl w/ 4-1/2" GR, 5-3/4" BOS Upper Ext, Top Sub, 6' x 3-1/2" PH6 Tbg Sub. Rih on 464 jts 3-1/2" PH6 12.95# S-135 WS. MIRU Hold Point. RU Pwr Swivel FISH PU jt #465 w/ Swivel. 174K Neutral, 169K down, 176K Up. Rotate 300 ft lbs, 172 Neutral, 166K down, 174K up. Ease down w/ jt #466. Slide over TOF at 14,404'. Rotate down to Flute. Seen very little. Rotate up and down 5X. Slide down past Flutes. See and swallow w/ Grapple w/ 4K down. Swallow to Top Sub. PU and Latch fish. Work up to 35K over. Good Bite w/ 35K over. Spot at 5k overl at Ratch Latch. Rotate in 5's and 3's with WT coming off. Creep up and rotate, again losing wt. Able to Rotate out of Pkr. String wt pulling at 188K. Good. RDMO Rd Pwre Swivel POOH LD 2 jts. Pooh w/ 8 jts. Have something hanging up. Able to rotate and work uphole. POOH Cont Pooh w/ 3-1/2" WS and OS Assy and Fish. Have 26 jts out, 440 jts in. OS at 13,617'. SA at 14,717'. Secure Well. Rig Broke down.

6/14/24: Cont Pooh w/ 3-1/2" WS, OS Assy, and Fish. Have 86 stds out. POOH Set CoFo at 13:05. Cont Pooh w/ 3-1/2" WS, OS, and Fish. Have 44 jts in hole, OS at 1392', SA at 2490'. Secure Well.

6/17/24: Cont Pooh w/ 3-1/2" WS, OS Assy, and Fish. Have 466 jts out. LD OS w/ 4-1/2" Tbg. LD 25 jts 4-1/2" Tbg. No heavy marks on top of BTC Cplg. Light Marks on 6. Light scratches along side of Cplgs. Had a couple of nicks in seals of SA. Had marks and wear on Centralizers of Latch Slips, ring below Latch Slips. Showing Rotations. Break Fish out of OS Assy. Fish Top in good shape. IPC Melted at TOF. Discus w/ Pat. Secure Well for Night

6/18/24: MIRU Acid Tech. Pump 1 bbls 10# Brine. Pump 140 bbls 15% HCL w/ Inhib, Solvent and H2S Scav. Flush w/ 976 bbls 10# Brine. Pump 10 bpm at 1000 - 1200 psi. ISIP 574, 5 min 260, 15 min 169 psi. 1 hr to 0. RDMO Acid Tech. NU Pres Test Bop (21Day). Blind Rams - 400 low 5 min, 4000 high 10 min. Pipe Rams - 400 low 5 min, 4000 high 10 min. Good Test. MU Seal Ally w/ 4-1/2" BTC Tbg Sub and 3-1/2" PH^ x 4-1/2" BTC X-over. Rih on 80-jts 3-1/2" 12.95# S-135 WS.

6/19/24: Pooh as LD 3-1/2" WS. 355 jts stil in hole. Rig down and Rack out Pwr Swivel Cont Pooh as LD 3-1/2" WS. Well Secure.

6/20/24: Pooh as LD 3-1/2" WS. jts stil in hole Cont Pooh as LD 3-1/2" WS. LD HalCo Seal Assy. Secure Well Prep Floor and Equip to Run Inj String.

6/21/24: RU to Run Csg. RIH PU 7" HalCo Seal Assy for Perm Pkr. Rih as PU 4-1/2" 13.5# L-80 BTC -KC TL-15XT lined Tubing. Drifting w/ 3.82" Teflon Drift. Ran 34-jts. Pour 55 gal Corr Inhib down csg and displace w/ 100 slow. RIH Cont Rih as PU 4-1/2" 13.5# L-80 BTC -KC TL- 15XT lined Tubing w/ HalCo Seal Assy. Have 104 good jts in hole. 11 jts no drift.

6/24/24: TIH w/ 7" HalCo Seal Assy for Perm Pkr. Rih as PU 4-1/2" 13.5# L-80 BTC -KC TL-15XT lined Tubing 111 jnt's (4,989') Drifting w/ 3.82" Teflon drift. Install X over inspect threads and IPC and PU 138 jnt's 5 1/2 17# L-80 BTC -KC TL-15XT lined Tubing. Drifting w/ 4.64". RIH Install X over inspect threads and IPC and PU 138 jnt's 5 1/2 17# L-80 BTC -KC TL-15XT lined Tubing. Drifting w/ 4.67". Saw slight bobble when we went into liner at 10,777'. Well Secure.

6/25/24: Seal Assy for Perm Pkr. Rih as PU 4-1/2" 13.5# L-80 BTC -KC TL-15XT lined Tubing 111 jnt's (4,989') Drifting w/ 3.82" Teflon drift. Install X over inspect threads and IPC and PU 239 jnt's 5 1/2 17# L-80 BTC -KC TL-15XT lined Tubing. Drifting w/ 4.64". RIH Cont. TIH w/ 7" HalCo Seal Assy for Perm Pkr. Rih as PU 4-1/2" 13.5# L-80 BTC -KC TL-15XT lined Tubing 111 jnt's (4,989') Drifting w/ 3.82" Teflon drift. Install X over inspect threads and IPC and PU 240 jnt's 5 1/2 17# L-80 BTC -KC TL-15XT lined Tubing. Drifting w/ 4.64". Total jnt count in well. 351 4 1/2 and 5 1/2 together. 4 1/2- 111 jnt's 4 1/2 13.5# IPC 5 1/2- 240 jnt's 5 1/2 17# IPC Up wt 232k. Down wt 206k. Neutral wt 208k. Lnd hgr in 46k compression. Rotating torque is 3800 FT #s. ND BOP/NU tree. Well Secure.

6/26/24: Test TCA to 500 psig. Test is good under 2% leak off. Test start was 472/Ending was 464 psi. Test tree and void to 4500 high 250 psi low. Test was good. Load and send in 3 1/2 WS

7/14/24: Spot in and RU Ranger BLU w/ Crane. RU 5-1/2" 5K Lube. MU 3.813" SN Plug on Running tool, and Tool String of 2-1/8" Spang Jar, 2-1/8" Oil Jar, 2-1/8" Wt Bar 210' L, and Rope Socket. Stab on Well. Pres Test Lube 2000 psi. Good. OW w/ 0 psi and Begin Rih. Went thru 5-1/2" Tbg w/o Issues. Set down in 5-1/2" x 4-1/2" Xover at 10,560' (BLM). Work String. Made it to 10,645'. Unable to get deeper. Confer w/ Clint. Pooh w/ Braided Line and Tools. Found marks on side of Plug. Confer w/ Tom. RDMO Ranger BLU. MI Atlas. Set 5" TWC in Hanger. Pres Test Tree. 447 Low 5 min, flat line. 4785 High 10min, flat line. Pres Test Void, work air out of void. Pres Test Void, Low test 207psi - 181 psi. lost 26 psi in 5 min. High test 4961 psi - 4860 psi, lost 101 psi in 10 min. RDMO Atlas.

7/15/24: Spot in support equipment. RUSU Lay pump lines. Install 5" BPV. ND 11" 10K x 5-1/18" 5k tree. PU on Hanger landed in 44k compression re-land hanger. NU 11" 10K double gage. Have 3-1/2" x 5-1/2" vbr pipe rams in btm. RU floor. Press test BOP's blinds - low 5 min 375-447 psi High 5 min 4320-4295 psi bleed off. Remove 5-1/2" csg sub. Secure well for night.

7/16/24: RU TTS 3.5 Pwr Swivel. PU Hanger at 175K. Pull up to 235K. No Bobble. Slack off to 222K. Rotate to Right w/ Pwr Swivel, (torque at 4000 ft lbs) work up to 240K. Work 4x. Not releasing. Turn torque to 4500 ft lbs. Work up to 240k 2X, Able to rotate out of Halco Pkr, Wt at 232K. PU 4'. Flush csg w/ 60 bbls 10#. Slack off and sting into Halco Pkr. Pull to 245K (15 over). Slack off and Land Hanger in 45K compression. Pres Test annular to 600 psi. Lost 100 psi in 60 min. Still have slow leak. Discuss w/ Tom. Spot in Catwalk and Racks. Well Shut in and Secure.

7/17/24: PU Hanger at 175K. Pull up to 235K. No Bobble. Slack off to 222K. Rotate to Right w/ Pwr Swivel, (torque at 3700 ft lbs) work up to 233K. 2X, Able to rotate out of Halco Pkr, Wt at 232K. PU 4'. Flush csg w/ 60 bbls 10#. RD swivel. and remove hgr. POOH LD 125 jnt's 5 1/2 BTC. Inspecting every jnt. Well Secure.

7/18/24: LD 15 jnt's 5 1/2 BTC. Inspecting every jnt. SD due to bad Drill line on rig.

7/19/24: SD due to bad Drill line on rig. POOH LD 15 jnt's 5 1/2 BTC. Inspecting every jnt. Well Secure.

7/20/24: LD 15 jnt's 4 1/2 BTC. Inspecting every jnt. 27 bad 5 1/2 BTC (17 bad pin and chipped ipc). 1 Bad 4 1/2 BTC (Bad Box) Seal assembly is in bad condition. All but 3 seals tore in half. Tally Inj string. Prep location for WL. MIRU WL Well Secure.

7/21/24: MIRU WL. Line bad on WL Unit.

7/22/24: MIRU WL PSI test Lubricator to 800 psig. Good test. RIH w/ 5.933 GRJB, Spang Jars, WT bars to 10,802'. POOH. RIH w/ Spang Jars, WT bars to 15,570' tagged up. PU pull strip through pkr. POOH. RU 1 more jnt of lubricator/ Add centralizers to BHA. RIH w/ 5.933 GRJB, Spang Jars, Centralizer WT bars centralizer to 15,515'. POOH. Well Secure.

7/23/24: MIRU WL PSI test Lubricator to 800 psig. Good test. RIH w/ 5.88 RBP, CCL WT bars to 15,477' Set RBP. POOH. RDMO WL Test CSG to 1,000 psig. 35 min. good test. Chart available. MIRU BL. RIH w/ 4.75' retrieving tool,

Shear down pulling tool, Spang Jars, Hyd. Jars, 10' WT bars to 15466'. Attempt to latch 23 times w/ no success. POOH. LD Lubricator. Well Secure.

7/24/24: MIRU WL PSI test Lubricator to 800 psig. Good test. WIRE RIH w/ 4.75' retrieving tool, Shear down pulling tool, Spang Jars, Hyd. Jars, 10' WT bars to 15466'. Latch fish/Release RBP. Set 15 min. RDMO BL Well Secure.

7/25/24: MIRU WL PSI test Lubricator to 800 psig. Good test. RIH w/ Single burst disc nickel coated, x-over, 5.88 Haliburton Permanent pkr. Set PKR at 15,505 WL measurement.

RDMO WL Continue cleaning and inspecting 5 1/2-4 1/2 BTC inj. string. Well Secure.

7/26/24: Continue cleaning and inspecting 5 1/2-4 1/2 BTC inj. string. Continue cleaning and inspecting 5 1/2-4 1/2 BTC inj. string. PU Halliburton SA (Nickel coated), 111 jnt's (4,975') 4 1/2 13.50# csg (Coated) PU 33 jnt's (1,452') 5 1/2 17# csg (Coated) Well Secure.

7/27/24: Continue cleaning and inspecting 5 1/2-4 1/2 BTC inj. string. Continue cleaning and inspecting 5 1/2-4 1/2 BTC inj. string. PU Halliburton SA (Nickel coated), 111 jnt's (4,974') 4 1/2 13.50# csg (Coated) PU 131 jnt's 5 1/2 17# csg (Coated) (SA is at 10,744') Well Secure.

7/30/24: Continue cleaning and inspecting 5 1/2-4 1/2 BTC inj. string. Continue cleaning and inspecting 5 1/2-4 1/2 BTC inj. string. PU Halliburton SA (Nickel coated), 111 jnt's (4,974') 4 1/2 13.50# csg (Coated) PU 239 jnt's 5 1/2 17# csg (Coated) (SA is at 15,505') Well Secure

7/31/24: Fill w/ .5 bbl 10#. Pres Test Annular w/ SA stung into Perma Pkr. Begin 9:19 at 1084 psi. 15 min 1019 psi. 30 min 1097 psi. Good test. RD and Rack out Pwr Swivel. POOH LD 3 jts 3-1/2" 12.95 PH6 RIH PU and Rih w/ 30' 5-1/2" 17# L-80 BTC TK-15XT IPC Pup Jts. In Hole w/ 111 jnt's (4,974') 4 1/2 13.50# csg (Coated) 239 jnt's 5 1/2 17# csg, 6', 8', 8', 8' x 5-1/2" 17# Pup Jts, Jt #240 5-1/2" 17# Csg(Coated)... (SA is at 15,505') ST WT Up 232K, ST WT Dn 210K. Land Hanger in 60K at 150K. Lock in Pins Fill Annular w/ 11.5 bbls 10#. Hook up to Atlas. Pres Test Annular Begin Test 17:05 at 1156 psi. 15 Min, 17:21 at 1152 psi. 30 Min, End at 17:37 1152 psi RDMO Csg Crew. Shut in and Secure Well.

8/1/24: Install 5" BPV. RD Floor. Nd Bop. NU 5-1/8" 5K WH w/ 11" 10L Adapter. Test Void (Hold Down Pins leaking) Able to get good Test. Begin Test 11:49 at 4258 psi. 10 Min lost 43 psi.

Remove 5" BPV. Install 5" TWC. WH. RDMO RDSU. Rack out equip. Move rig to ND 19 Federal SWD. SDFN Well Shut in and Secure.



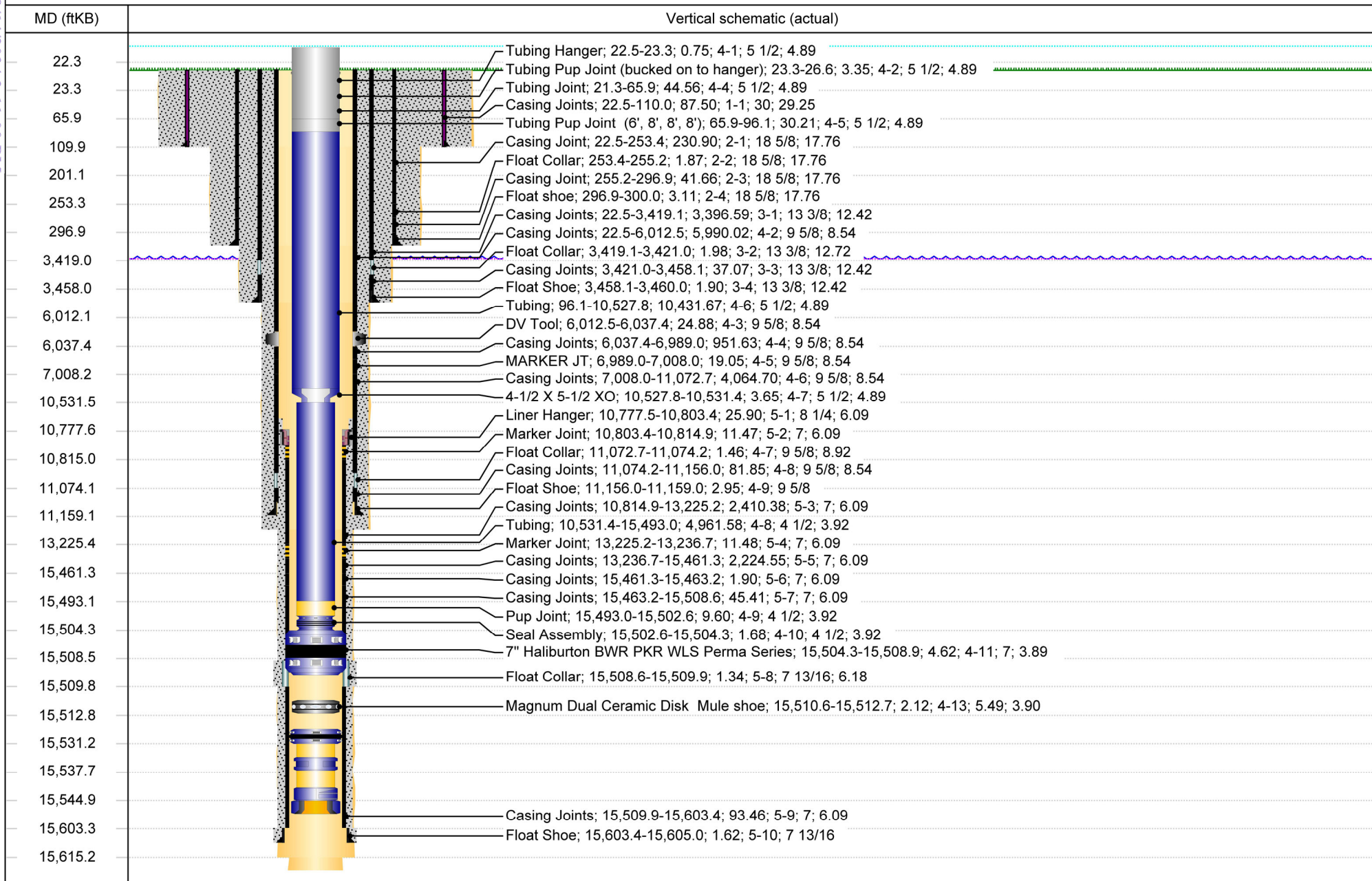
Schematic - Drilling Directional

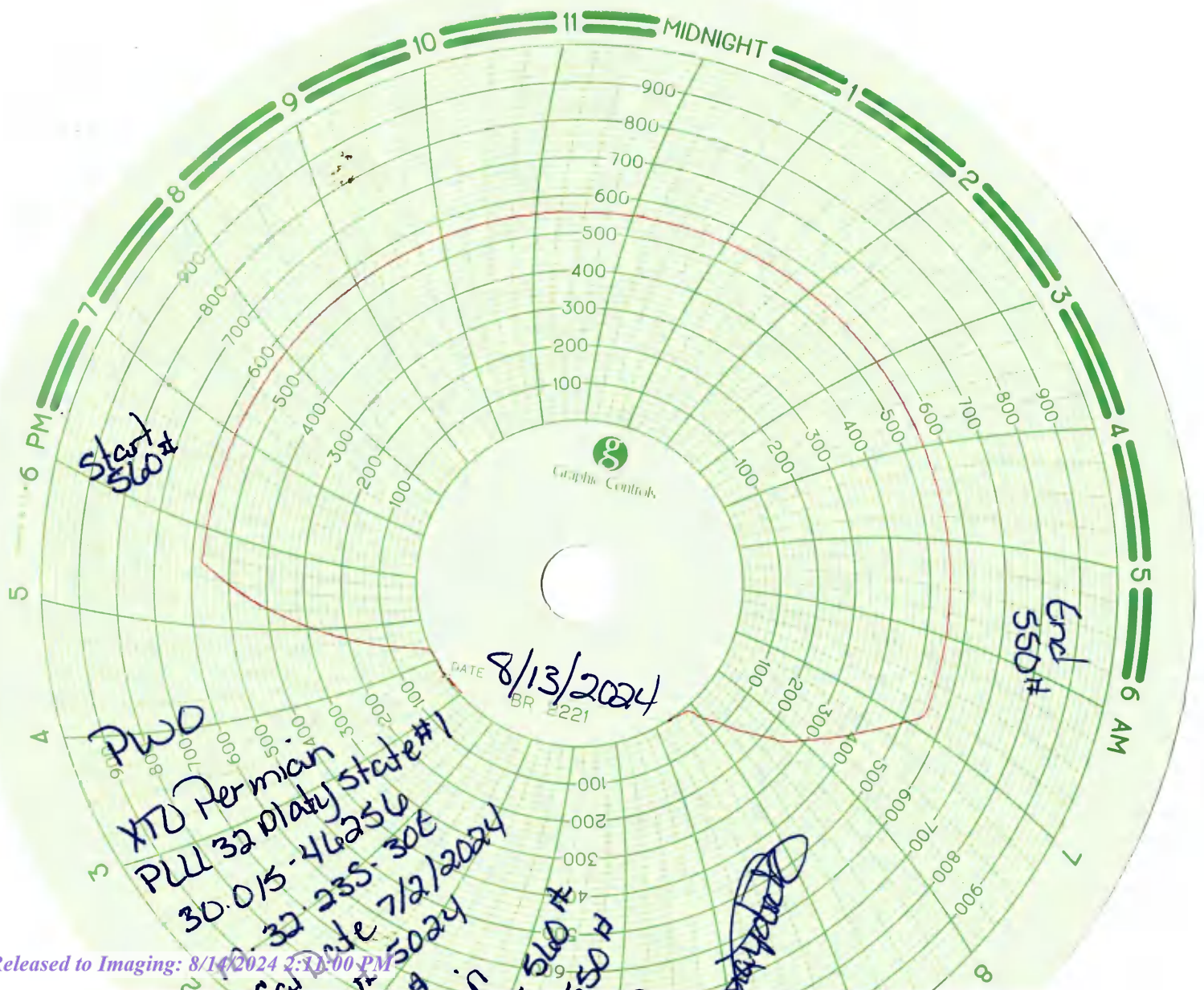
Well Name: Poker Lake Unit 32 Platy State SWD 001

Original Hole

API/UWI 3001546256	SAP Cost Center ID 2199131001	Permit Number 326088	State/Province New Mexico	County Eddy	Ground Elevation (ft) 3,245.00	KB-Ground Distance (ft) 22.50	Surface Casing Flange Elevatio... -1.20
Surface Location T23S-R30E-S32	Spud Date 11/16/2019 22:00	Original KB Elevation (ft) 3,267.50					

Vertical, Original Hole, 8/14/2024 10:18:20 AM





District I
1625 N. French Dr., Hobbs, NM 88240
Phone:(575) 393-6161 Fax:(575) 393-0720
District II
811 S. First St., Artesia, NM 88210
Phone:(575) 748-1283 Fax:(575) 748-9720
District III
1000 Rio Brazos Rd., Aztec, NM 87410
Phone:(505) 334-6178 Fax:(505) 334-6170
District IV
1220 S. St Francis Dr., Santa Fe, NM 87505
Phone:(505) 476-3470 Fax:(505) 476-3462

State of New Mexico
Energy, Minerals and Natural Resources
Oil Conservation Division
1220 S. St Francis Dr.
Santa Fe, NM 87505

CONDITIONS

Action 373852

CONDITIONS

Operator: XTO ENERGY, INC 6401 Holiday Hill Road Midland, TX 79707	OGRID: 5380
	Action Number: 373852
	Action Type: [C-103] Sub. Workover (C-103R)

CONDITIONS

Created By	Condition	Condition Date
mgebremichael	None	8/14/2024