

**Well Name:** OLMER**Well Location:** T28N / R10W / SEC 25 /  
NENW / 36.637177 / -107.849899**County or Parish/State:** SAN  
JUAN / NM**Well Number:** 7**Type of Well:** CONVENTIONAL GAS  
WELL**Allottee or Tribe Name:****Lease Number:** NMSF077085**Unit or CA Name:****Unit or CA Number:****US Well Number:** 3004507195**Operator:** HILCORP ENERGY  
COMPANY

### Subsequent Report

**Sundry ID:** 2807008**Type of Submission:** Subsequent Report**Type of Action:** Plug and Abandonment**Date Sundry Submitted:** 08/15/2024**Time Sundry Submitted:** 09:05**Date Operation Actually Began:** 08/12/2024**Actual Procedure:** Hilcorp Energy has plugged and abandoned the subject well on 8/13/2024 per the attached report.

### SR Attachments

**Actual Procedure**

Omler\_7\_SR\_P\_A\_BLM\_Submitted\_20240815090443.pdf

Well Name: OLMER

Well Location: T28N / R10W / SEC 25 /  
NENW / 36.637177 / -107.849899County or Parish/State: SAN  
JUAN / NM

Well Number: 7

Type of Well: CONVENTIONAL GAS  
WELL

Allottee or Tribe Name:

Lease Number: NMSF077085

Unit or CA Name:

Unit or CA Number:

US Well Number: 3004507195

Operator: HILCORP ENERGY  
COMPANY**Operator**

I certify that the foregoing is true and correct. Title 18 U.S.C. Section 1001 and Title 43 U.S.C. Section 1212, make it a crime for any person knowingly and willfully to make to any department or agency of the United States any false, fictitious or fraudulent statements or representations as to any matter within its jurisdiction. Electronic submission of Sundry Notices through this system satisfies regulations requiring a

Operator Electronic Signature: PRISCILLA SHORTY

Signed on: AUG 15, 2024 09:04 AM

Name: HILCORP ENERGY COMPANY

Title: Regulatory Technician

Street Address: 382 ROAD 3100

City: AZTEC

State: NM

Phone: (505) 324-5188

Email address: PSHORTY@HILCORP.COM

**Field**

Representative Name:

Street Address:

City:

State:

Zip:

Phone:

Email address:

**BLM Point of Contact**

BLM POC Name: MATTHEW H KADE

BLM POC Title: Petroleum Engineer

BLM POC Phone: 5055647736

BLM POC Email Address: MKADE@BLM.GOV

Disposition: Accepted

Disposition Date: 08/16/2024

Signature: Matthew Kade

OMLER 7

30.045.07195

PLUG AND ABANDONMENT

**8/12/2024** – CK PRESSURES SIICP – 0 PSI; SIBHP – 0 PSI, SICP 0 PSI. 2 MIN BD WELL. R/U WELLCHECK. PSI TEST BLIND RAMS (GOOD TEST). PIPE RAMS FAILED TEST (NO RUBBERS ON LOCATION). R/U WIRELINE. SET CICR @ 1848'. SWAP OUT RUBBERS ON BOP. PSI TEST PIPE RAMS (GOOD TEST). N/D WELLHEAD. N/U BOP. P/U STINGER FOR CICR. TALLY AND P/U 1-1/4 IJ TUBING. TAG CICR. SPACE OUT W/ PUP JOINTS. R/U HEC CEMENT. **PUMP PLUG #1A. PUMP 5.5 BBLS. EST INJ RATE 2.5 BPM @ 300 PSI. PUMP 3 SXS CLASS G CMT, 1.15 YLD W/ 3.5 BBLS DISPLACEMENT.** STING OUT OF RETAINER AND ATTEMPT TO REVERSE CIRC (PUMP 13 BBLS W/ NO RETURNS). TOH W/ 1-1/4 TUBING. R/U WIRELINE. RIH AND SET CIBP @ 1835'. LOAD CASING W/ 9.5 BBLS. PSI TEST CASING TO 560 PSI. RIH W/ LOGGING. R/D WIRELINE. TIH W/ TUBING OPEN ENDED. ROLL HOLE W/ 10 BBLS. TOH W/ TUBING. R/U WIRELINE. LOG CASING FROM 1835 TO SURFACE. TIH AND **PUMP BALANCE PLUG #1B W/ 9 SXS OF CLASS G, 1.15 YLD CMT FROM 1835' TO 1531'. DISPLACE W/ 2.8 BBLS.** LD 9 JTS AND REVERSE CIRC UNTIL RETURNS ARE CLEAN. TOH TO TOP OF CEMENT. REVERSE CIRCULATE. TOH 10 JTS TO DERRICK. SDFN.

**8/13/2024** - CK PRESSURES SIICP – 0 PSI; SIBHP – 0 PSI, SICP 0 PSI. 0 MIN BD WELL. TIH AND TAG **BALANCE PLUG @ 1534'. HEC ENGINEER EMAILED BLM AND NMOCD PROVIDING CBL AND DOCUMENTING VERBAL APPROVAL TO PROCEED WITH APPROVED NOI. THE ONLY ADJUSTMENT IS THAT PLUG #2 WILL BE LENGTHENED TO ACCOUNT FOR BLM OJO FORMATION TOP.** PSI TEST CASING TO 560 PSI FOR 15 MIN (GOOD TEST). L/D 16 JTS AND **PUMP BALANCE PLUG #2 W/ 10 SXS OF CLASS G, 1.15 YIELD CEMENT FROM 1003' TO 650'.** DISPLACE W/ 1.2 BBLS. L/D 13 JTS AND REVERSE CIRCULATE UNTIL RETURNS ARE CLEAN. L/D REMAINING TUBING. **HEC ENGINEER EMAILED BLM AND NMOCD NOTIFYING THEM THAT AFTER PERFORATING AT 148', THEY WERE ABLE TO CIRCULATE WATER UP THE 5-1/2" X 9-5/8" ANNULUS. AFTER PUMPING CEMENT, THERE WAS NOT CEMENT RETURNS TO SURFACE. BLM & NMOCD GAVE VERBAL APPROVAL TO WOC 4 HRS, CUT OFF WH, AND RIH W/ 1" POLYLINE TO TOP OFF ALL STRINGS WITH CEMENT.** R/U WIRELINE AND RIH AND PERFORATE @ 148'. R/D WIRELINE. R/U HEC CEMENT PACKAGE AND **PUMP SURFACE PLUG 69 SXS CLASS G CEMENT 1.15 YIELD 15.9 PPG.** NO CEMENT RETURNS UP BRADENHEAD. WOC 4 HOURS. TAG BALANCED PLUG @ 72'. N/D BOP. CUT OFF WELLHEAD. R/D UNIT. TOP OFF BRADENHEAD AND CASING WITH 26 SX. INSTALL DRY HOLE MARKER. RD RR.

**WELL WAS PLUGGED AND ABANDONED ON 8/13/2024.**

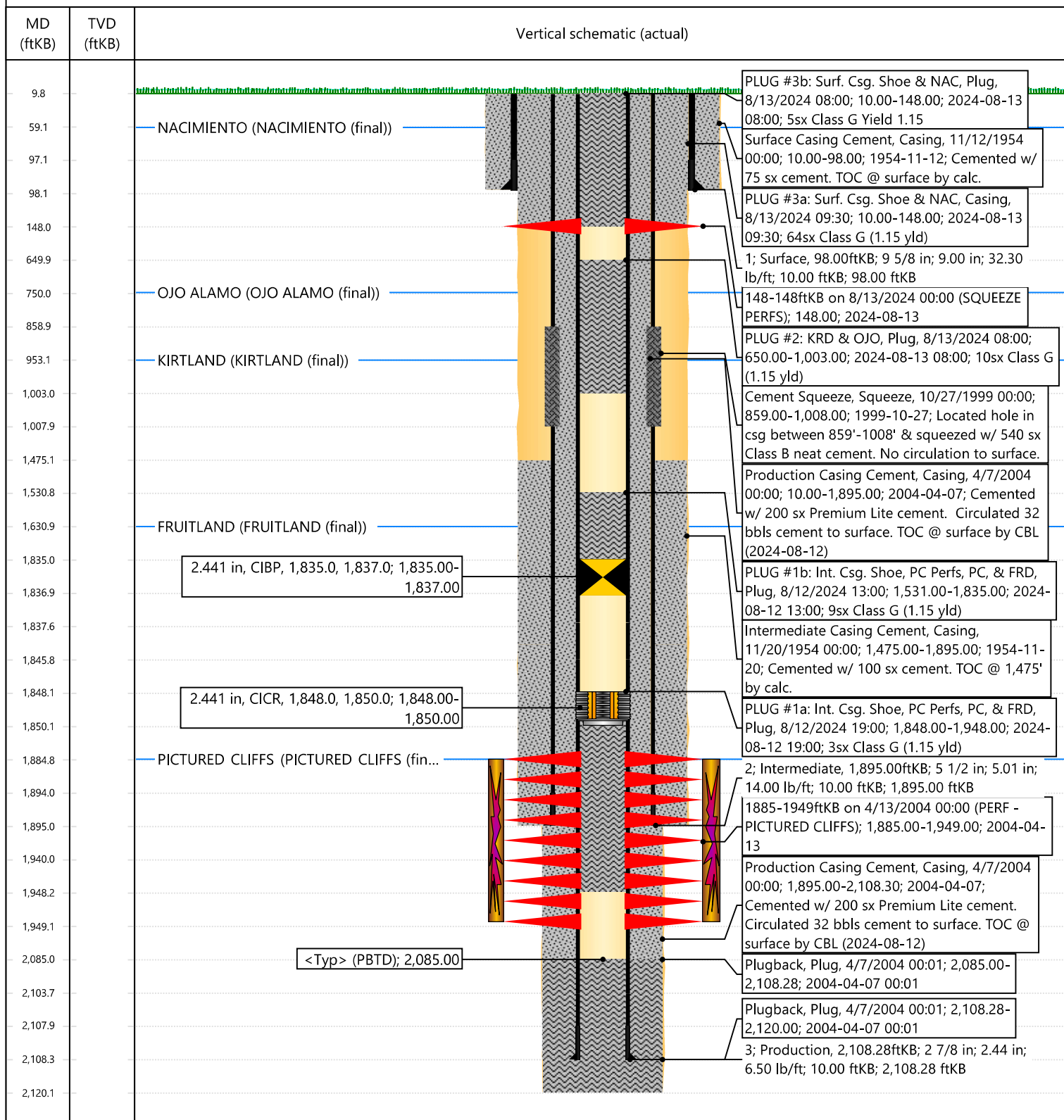


## Current Schematic - Version 3

Well Name: OMLER #7

API / UWI 3004507195	Surface Legal Location 025-028N-010W-C	Field Name FULCHER KUTZ PC (GAS)	Route 0808	State/Province NEW MEXICO	Well Configuration Type
Ground Elevation (ft) 5,807.00	Original KB/RT Elevation (ft) 5,817.00	Tubing Hanger Elevation (ft)	RKB to GL (ft) 10.00	KB-Casing Flange Distance (ft)	KB-Tubing Hanger Distance (ft)
<b>Tubing Strings</b>					
Run Date	Set Depth (ftKB)	String Max Nominal OD (in)	String Min Nominal ID (in)	Weight/Length (lb/ft)	Original Spud Date

## Original Hole



**Priscilla Shorty**

---

**From:** Rennick, Kenneth G <krennick@blm.gov>  
**Sent:** Tuesday, August 13, 2024 10:14 AM  
**To:** John LaMond; Kuehling, Monica, EMNRD; Kade, Matthew H  
**Cc:** Farmington Regulatory Techs; Clay Padgett; Lee Murphy; Rustin Mikeska; Matt Gustamantes - (C)  
**Subject:** Re: [EXTERNAL] RE: CBL Submission for Hilcorp's OMLER #7 (API # 3004507195) P&A

**CAUTION:** External sender. DO NOT open links or attachments from UNKNOWN senders.

To confirm, the BLM finds the proposed procedure of this message and the previous message appropriate.

Kenneth (Kenny) Rennick

Petroleum Engineer

Bureau of Land Management  
Farmington Field Office  
6251 College Blvd  
Farmington, NM 87402

Email: [krennick@blm.gov](mailto:krennick@blm.gov)  
Mobile & Text: 505.497.0019

---

**From:** John LaMond <jlamond@hilcorp.com>  
**Sent:** Tuesday, August 13, 2024 10:11 AM  
**To:** Kuehling, Monica, EMNRD <monica.kuehling@emnrd.nm.gov>; Rennick, Kenneth G <krennick@blm.gov>; Kade, Matthew H <mkade@blm.gov>  
**Cc:** Farmington Regulatory Techs <FarmingtonRegulatoryTechs@hilcorp.com>; Clay Padgett <cpadgett@hilcorp.com>; Lee Murphy <lmurphy@hilcorp.com>; Rustin Mikeska <rmikeska@hilcorp.com>; Matt Gustamantes - (C) <Matt.Gustamantes@hilcorp.com>; John LaMond <jlamond@hilcorp.com>  
**Subject:** [EXTERNAL] RE: CBL Submission for Hilcorp's OMLER #7 (API # 3004507195) P&A

**This email has been received from outside of DOI - Use caution before clicking on links, opening attachments, or responding.**

Good morning Monica and Kenny,

After pumping Plugs #1 & #2 as planned, Hilcorp perforated @ 148' (50' below the surface shoe) and were able to circulate water up the 5-1/2" x 9-5/8" annulus. We then pumped our cement job per design but did not get cement returns to surface.

Moving forward, Hilcorp received verbal approval from the NMOCD & BLM to WOC 4 hours to allow the 2-7/8" inside cement plug to cure, cut off the wellhead, and will RIH w/ 1" polyline to top off all strings with cement.

Please let me know if you have any questions.

Thanks,

**John LaMond**

Operations Engineer – Technical Services

Hilcorp Energy Company

1111 Travis

Houston, TX 77002

346-237-2210 (Office)

832-754-9692 (Cell)

[jlamond@hilcorp.com](mailto:jlamond@hilcorp.com)

---

**From:** John LaMond <[jlamond@hilcorp.com](mailto:jlamond@hilcorp.com)>

**Sent:** Tuesday, August 13, 2024 10:30 AM

**To:** Kuehling, Monica, EMNRD <[monica.kuehling@emnrd.nm.gov](mailto:monica.kuehling@emnrd.nm.gov)>; Rennick, Kenneth G <[krennick@blm.gov](mailto:krennick@blm.gov)>; Kade, Matthew H <[mkade@blm.gov](mailto:mkade@blm.gov)>

**Cc:** Farmington Regulatory Techs <[FarmingtonRegulatoryTechs@hilcorp.com](mailto:FarmingtonRegulatoryTechs@hilcorp.com)>; Clay Padgett <[cpadgett@hilcorp.com](mailto:cpadgett@hilcorp.com)>; John LaMond <[jlamond@hilcorp.com](mailto:jlamond@hilcorp.com)>; Lee Murphy <[lmurphy@hilcorp.com](mailto:lmurphy@hilcorp.com)>; Rustin Mikeska <[rmikeska@hilcorp.com](mailto:rmikeska@hilcorp.com)>; Matt Gustamantes - (C) <[Matt.Gustamantes@hilcorp.com](mailto:Matt.Gustamantes@hilcorp.com)>

**Subject:** CBL Submission for Hilcorp's OMLER #7 (API # 3004507195) P&A

Good morning Monica and Kenny,

Attached is the CBL that was run yesterday (8/12/2024) on Hilcorp's OMLER #7 (API # 3004507195) P&A. This CBL shows cement to surface.

Moving forward, Hilcorp received verbal approval from the BLM & NMOCD to proceed with the plugging procedure as stated and approved in the NOI. This will include inside plugs for PLUG #1b & PLUG #2, and an inside/outside plug for PLUG #3. The only adjustment is that PLUG #2 will be lengthened to account for the BLM OJO top pick @ 750' from the approved NOI.

Please let me know if you have any questions.

Thanks,

**John LaMond**

Operations Engineer – Technical Services

Hilcorp Energy Company

1111 Travis

Houston, TX 77002

**District I**  
1625 N. French Dr., Hobbs, NM 88240  
Phone:(575) 393-6161 Fax:(575) 393-0720  
**District II**  
811 S. First St., Artesia, NM 88210  
Phone:(575) 748-1283 Fax:(575) 748-9720  
**District III**  
1000 Rio Brazos Rd., Aztec, NM 87410  
Phone:(505) 334-6178 Fax:(505) 334-6170  
**District IV**  
1220 S. St Francis Dr., Santa Fe, NM 87505  
Phone:(505) 476-3470 Fax:(505) 476-3462

**State of New Mexico**  
**Energy, Minerals and Natural Resources**  
**Oil Conservation Division**  
**1220 S. St Francis Dr.**  
**Santa Fe, NM 87505**

CONDITIONS

Action 374653

CONDITIONS

Operator: HILCORP ENERGY COMPANY 1111 Travis Street Houston, TX 77002	OGRID: 372171
	Action Number: 374653
	Action Type: [C-103] Sub. Plugging (C-103P)

CONDITIONS

Created By	Condition	Condition Date
mkuehling	well plugged 8/13/2024	8/21/2024
mkuehling	CBL in file	8/21/2024