

Submit 1 Copy To Appropriate District Office
 District I – (575) 393-6161
 1625 N. French Dr., Hobbs, NM 88240
 District II – (575) 748-1283
 811 S. First St., Artesia, NM 88210
 District III – (505) 334-6178
 1000 Rio Brazos Rd., Aztec, NM 87410
 District IV – (505) 476-3460
 1220 S. St. Francis Dr., Santa Fe, NM 87505

State of New Mexico
 Energy, Minerals and Natural Resources

OIL CONSERVATION DIVISION
 1220 South St. Francis Dr.
 Santa Fe, NM 87505

Form C-103
 Revised July 18, 2013

| | | |
|--|--|---|
| SUNDRY NOTICES AND REPORTS ON WELLS (DO NOT USE THIS FORM FOR PROPOSALS TO DRILL OR TO DEEPEN OR PLUG BACK TO A DIFFERENT RESERVOIR. USE "APPLICATION FOR PERMIT" (FORM C-101) FOR SUCH PROPOSALS.) | | WELL API NO. 30-005-27988 |
| 1. Type of Well: Oil Well <input checked="" type="checkbox"/> Gas Well <input type="checkbox"/> Other <input type="checkbox"/> | | 5. Indicate Type of Lease STATE <input checked="" type="checkbox"/> FEE <input type="checkbox"/> |
| 2. Name of Operator Cano Petro of New Mexico, Inc. | | 6. State Oil & Gas Lease No. |
| 3. Address of Operator 801 Cherry Street Suite 3200 Unit 25 Fort Worth, TX 76102 | | 7. Lease Name or Unit Agreement Name Cato San Andres Unit |
| 4. Well Location Unit Letter <u>P</u> <u>1137</u> feet from the <u>S</u> line and <u>1210</u> feet from the <u>E</u> line Section <u>11</u> Township <u>08S</u> Range <u>30E</u> NMPM County <u>Chaves</u> | | 8. Well Number <u>547</u> |
| 11. Elevation (Show whether DR, RKB, RT, GR, etc.) <u>4154</u> | | 9. OGRID Number <u>330485</u> |
| | | 10. Pool name or Wildcat Cato; San Andres |

12. Check Appropriate Box to Indicate Nature of Notice, Report or Other Data

NOTICE OF INTENTION TO:

PERFORM REMEDIAL WORK ☐ PLUG AND ABANDON ☐
 TEMPORARILY ABANDON ☐ CHANGE PLANS ☐
 PULL OR ALTER CASING ☐ MULTIPLE COMPL ☐
 DOWNHOLE COMMINGLE ☐
 CLOSED-LOOP SYSTEM ☐
 OTHER: ☐

SUBSEQUENT REPORT OF:

REMEDIAL WORK ☐ ALTERING CASING ☐
 COMMENCE DRILLING OPNS. ☐ P AND A ☒
 CASING/CEMENT JOB ☐
 OTHER: ☐

13. Describe proposed or completed operations. (Clearly state all pertinent details, and give pertinent dates, including estimated date of starting any proposed work). SEE RULE 19.15.7.14 NMAC. For Multiple Completions: Attach wellbore diagram of proposed completion or recompletion.

See documents below.

Spud Date:

Rig Release Date:

I hereby certify that the information above is true and complete to the best of my knowledge and belief.

SIGNATURE: Ethan Wakefield

TITLE: Authorized Representative

DATE 8/20/24

Type or print name: Ethan Wakefield

E-mail address: e.wakefield@dwsrigs.com

PHONE: 405-343-7736

For State Use Only

APPROVED BY: _____ TITLE _____ DATE _____

Cano Petro Inc./NMOCD OWP

Plug And Abandonment End Of Well Report

Cato San Andres Unit #547

1137' FSL & 1210' FEL, Section 11, T8S, R30E

Chaves County, NM / API 30-005-27988

Work Summary:

- 6/17/21** Made NMOCD P&A operations notifications at 9:00 AM MST.
- 6/18/21** MOL and R/U P&A rig. Prepped location with backhoe. Checked well pressures: Tubing: 0 psi, Casing: 0 psi, Bradenhead: 0 psi. Bled down well. Fished parted rods with baby red. L/D 132-3/4" slick sucker rods, 12- 7/8" guided sucker rods, and sucker rod pump. N/D wellhead, N/U BOP and function tested. Shut-in well for the day.
- 6/19/21** Checked well pressures: Tubing: 0 psi, Casing: 0 psi, Bradenhead: 0 psi. Bled down well. L/D 3,728' of 2-7/8" production tubing. P/U casing scraper and round tripped above top perforation to a depth of 3,510'. P/U CR, TIH and set at 3,470'. Stung out of CR and circulated wellbore with 40 bbls of fresh water. Pressure tested 5 1/2" production casing to 800 psi in which it successfully held pressure. TOOH with tubing and L/D stinger nose. R/U wireline services. Ran CBL from CR at 3,470' to surface. CBL results were sent to NMOCD office for review. Shut-in well for the day.
- 6/20/21** Checked well pressures: Tubing: 0 psi, Casing: 0 psi, Bradenhead: 0 psi. Bled down well. TIH with tubing to CR at 3,470'. R/U cementing services. Pumped plug #1 from 3,470'-3,226' to cover the San Andres perforations and formation top. Spotted 9.5 ppg mud spacer from 3,226'-1,595'. TOOH with tubing. R/U wireline services. RIH and perforated squeeze holes at 1,595'. Attempted to establish injection rate into perforations at 1,595' but was unsuccessful. R/U cementing services. Pumped plug #2 from 1,645'-930' to cover the Yates and Rustler formation tops and perforations at 1,595'. WOC 4 hours. TIH

and tagged plug #2 top at 1,000'. R/U cementing services. Topped-off plug #2 from 1,000'-920'. Spotted 9.5 ppg mud spacer from 920'-565'. PUH. R/U cementing services. Pumped plug #3 from 565'-surface to cover the surface casing shoe. L/D remaining tubing to surface. N/D BOP. WOC overnight. Shut-in well for the day.

6/23/21 Checked well pressures: Tubing: N/A, Casing: 0 psi, Bradenhead: 0 psi. Bled down well. Performed wellhead cut-off. Ran weighted tally tape down both 8-5/8" surface casing and 5 1/2" production casing and tagged cement 50' down in both strings of casing. Ran 3/4" poly pipe down both casings. R/U cementing services. Topped-off both strings of casing with 13 sx of cement. Installed P&A marker and plate per NMOCD regulations. Photographed the P&A marker in place and recorded its location via GPS coordinates. Back filled P&A marker. R/D and MOL.

Plug Summary:

Plug #1:(San Andres Perforations and Formation Top 3,470'-3,226', 25 Sacks Class C Cement)

Mixed 25 sx Class C cement and spotted a balanced plug to cover the San Andres perforations and formation top.

Plug #2:(Yates and Rustler Formation Tops 1,645'-920', 80 Sacks Class C Cement)

RIH and perforated squeeze holes at 1,595'. Attempted to establish injection rate into perforations at 1,595' but was unsuccessful. R/U cementing services. Pumped plug #2 from 1,645'-930' to cover the Yates and Rustler formation tops and perforations at 1,595'. WOC 4 hours. TIH and tagged plug #2 top at 1,000'. R/U cementing services. Topped-off plug #2 from 1,000'-920'.

Plug #3: (Surface Casing Shoe 565'-Surface, 83 Sacks Class C Cement(13 sx for top-off))

Pumped plug #3 from 565'-surface to cover the surface casing shoe. L/D remaining tubing to surface. N/D BOP. WOC overnight. Performed wellhead cut-off. Ran weighted tally tape down both 8-5/8" surface casing and 5 1/2" production casing and tagged cement 50' down in both strings of casing. Ran 3/4" poly pipe down both casings. R/U cementing services. Topped-off both strings of casing with 13 sx of cement. Installed P&A marker and plate per NMOCD regulations. Photographed the P&A marker in place and recorded its location via GPS coordinates. Back filled P&A marker. R/D and MOL.

Wellbore Diagram

Cato San Andres Unit #547
API #: 30-005-27988
Chaves County, New Mexico

Plug 3

565 feet - Surface
565 feet plug
83 sacks of Class C Cement
13 sacks for top-off

Plug 2

1645 feet - 920 feet
725 feet plug
80 sacks of Class C Cement

Plug 1

3470 feet - 3226 feet
244 feet plug
25 sacks of Class C Cement

Surface Casing

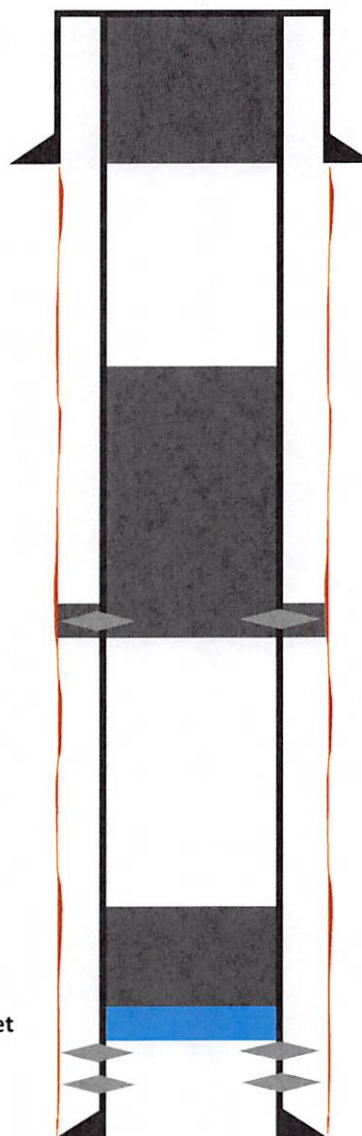
8.625" 24# @ 515 ft

Formation

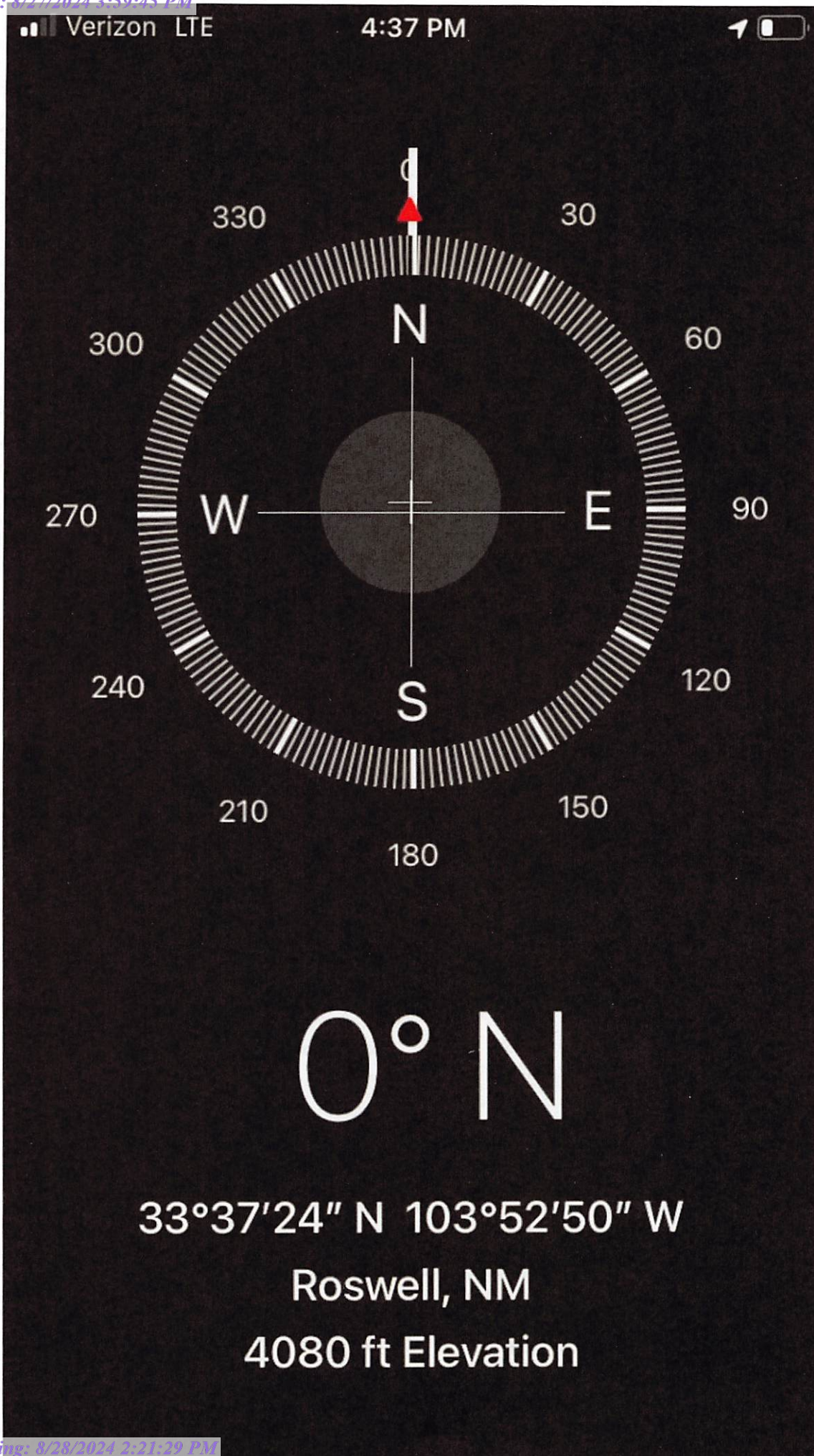
Rustler - 1072 ft
Yates - 1545 ft

Retainer @ 3470 feet

Production Casing
5.5" 15.5# @ 4080 ft







District I
1625 N. French Dr., Hobbs, NM 88240
Phone:(575) 393-6161 Fax:(575) 393-0720
District II
811 S. First St., Artesia, NM 88210
Phone:(575) 748-1283 Fax:(575) 748-9720
District III
1000 Rio Brazos Rd., Aztec, NM 87410
Phone:(505) 334-6178 Fax:(505) 334-6170
District IV
1220 S. St Francis Dr., Santa Fe, NM 87505
Phone:(505) 476-3470 Fax:(505) 476-3462

State of New Mexico
Energy, Minerals and Natural Resources
Oil Conservation Division
1220 S. St Francis Dr.
Santa Fe, NM 87505

CONDITIONS

Action 378488

CONDITIONS

| | |
|--|--|
| Operator: CANO PETRO OF NEW MEXICO, INC. 801 Cherry Street Fort Worth, TX 76102 | OGRID: 248802 |
| | Action Number: 378488 |
| | Action Type: [C-103] Sub. Plugging (C-103P) |

CONDITIONS

| | | |
|-------------|-----------|----------------|
| Created By | Condition | Condition Date |
| loren.diede | None | 8/28/2024 |