

U.S. Department of the Interior  
BUREAU OF LAND MANAGEMENT

<b>Well Name:</b> WF FEDERAL 28	<b>Well Location:</b> T30N / R14W / SEC 28 / NENE / 36.780862 / -108.308271	<b>County or Parish/State:</b> SAN JUAN / NM
<b>Well Number:</b> 1R	<b>Type of Well:</b> OTHER	<b>Allottee or Tribe Name:</b>
<b>Lease Number:</b> NMNM97843	<b>Unit or CA Name:</b>	<b>Unit or CA Number:</b>
<b>US Well Number:</b> 3004530851	<b>Operator:</b> HILCORP ENERGY COMPANY	

### Subsequent Report

**Sundry ID:** 2816279

**Type of Submission:** Subsequent Report

**Type of Action:** Plug and Abandonment

**Date Sundry Submitted:** 10/10/2024

**Time Sundry Submitted:** 05:40

**Date Operation Actually Began:** 10/08/2024

**Actual Procedure:** Hilcorp Energy Company has plugged and abandoned the subject well on 10/9/2024 per the attached report.

### SR Attachments

#### Actual Procedure

WF\_FEDERAL\_28\_1R\_SR\_P\_A\_BLM\_Submitted\_20241010053525.pdf

Well Name: WF FEDERAL 28

Well Location: T30N / R14W / SEC 28 /  
NENE / 36.780862 / -108.308271County or Parish/State: SAN  
JUAN / NM

Well Number: 1R

Type of Well: OTHER

Allottee or Tribe Name:

Lease Number: NMNM97843

Unit or CA Name:

Unit or CA Number:

US Well Number: 3004530851

Operator: HILCORP ENERGY  
COMPANY**Operator**

I certify that the foregoing is true and correct. Title 18 U.S.C. Section 1001 and Title 43 U.S.C. Section 1212, make it a crime for any person knowingly and willfully to make to any department or agency of the United States any false, fictitious or fraudulent statements or representations as to any matter within its jurisdiction. Electronic submission of Sundry Notices through this system satisfies regulations requiring a

Operator Electronic Signature: PRISCILLA SHORTY

Signed on: OCT 10, 2024 05:39 AM

Name: HILCORP ENERGY COMPANY

Title: Regulatory Technician

Street Address: 382 ROAD 3100

City: AZTEC

State: NM

Phone: (505) 324-5188

Email address: PSHORTY@HILCORP.COM

**Field**

Representative Name:

Street Address:

City:

State:

Zip:

Phone:

Email address:

**BLM Point of Contact**

BLM POC Name: MATTHEW H KADE

BLM POC Title: Petroleum Engineer

BLM POC Phone: 5055647736

BLM POC Email Address: MKADE@BLM.GOV

Disposition: Accepted

Disposition Date: 10/10/2024

Signature: Matthew Kade

WF FEDERAL 28 1R

30.045.30851

PLUG AND ABANDONMENT

**10/3/2024 – HEC ENGINEER SENT BLM AND NMOC D AN EMAIL DOCUMENTING VERBAL APPROVAL TO MAKE ADJUSTMENTS TO THE P&A PROCEDURE BASED ON COAs.**

**10/8/2024 -** CK PRESSURES ON WELL. CASING 0 PSI. TBG N/A. BH 0 PSI. NO BLOW DOWN. ND WH. NU BOP. FUNCTION TEST BOP. TALLY PICK UP AND TRIP IN THE HOLE TO THE CIBP AT 925' WITH 3 7/8" JUNK MILL. SIX 3 1/8" DRILL COLLARS AND 23 JOINTS OF 2 3/8" TUBING. RIG UP POWER SWIVEL. BRING ON AIR UNIT AT 1350 CFM AND 12 BBLS PER HOUR AIR FOAM MIST. MILL OUT CIBP AT 925'. (@ 2HOUR) SHUT AIR UNIT DOWN ONCE RETURNS WERE CLEAN. PICK UP EXTRA JOINTS OF TUBING AND TRIP IN THE HOLE TO BOTTOM PERF AT 1120'. ALL CLEAR. TRIP OUT OF THE HOLE WITH 3 7/8" JUNK MILL. SHUT WELL IN. SDFN. **MARK DECKER WITH THE BLM WAS ON LOCATION.**

**10/9/2024 -** CK PRESSURES ON WELL. CASING 0 PSI. TUBING N/A. BH 0 PSI. NO BLOW DOWN. PICK UP 4 1/2" CEMENT RETAINER. TRIP IN HOLE AND SET AT 916'. PRESSURE TEST TUBING TO 1700 PSI. TEST GOOD. RU UP DRAKE CEMENTERS. ESTABLISH INJECTION RATE BELOW THE CEMENT RETAINER INTO THE PERFS AT 1.8 BBLS PER MINUTE AT 190 PSI. **PUMP CEMENT PLUG #1A. 20 SXS CLASS G CEMENT BELOW CEMENT RETAINER AT 916'. 4 BBLS SLURRY, 1.15 Y, 15.8# & 5 GAL/SX. TOC 916', BOC 1171'.** DISPLACED WITH 3.5 BBLS OF WATER. STING OUT OF RETAINER. CIRCULATED AND ROLLED THE HOLE WITH 18 BBLS OF WATER UNTIL RETURNS WERE CLEAN. TRIP OUT OF THE HOLE WITH THE TUBING. PRESSURE TEST THE CASING TO 560 PSI FOR 5 MINUTES. DROPPED TO 420 PSI DURING THAT TIME FRAME. **MARK DECKER WITH THE BLM ON LOCATION FOR P/A OPERATIONS.** RIG UP TWG. RUN A CBL FROM CEMENT RETAINER AT 916' TO SURFACE. CEMENT WAS GOOD. **HEC ENGINEER SENT THE CBL TO BLM AND NMOC D, RECEIVED VERBAL APPROVAL TO PROCEED WITH PLUG #1B AS PREVIOUSLY APPROVED.** TRIP IN THE HOLE TO CEMENT RETAINER AT 916' WITH 2 3/8" TUBING AND TAG UP. **PUMP CEMENT PLUG #1B WITH 72 SXS CLASS G CEMENT FROM RETAINER AT 916' TO SURFACE. 14.6 BBLS SLURRY, 1.15 Y, 15.8# & 5 GAL/SX. TOC AT SURFACE', BOC 916'. 1/2 BBL OF GOOD CEMENT TO RETURNS PIT.** TRIPPED OUT OF THE HOLE WITH TUBING. TOPPED 4 1/2" CASING OFF WITH CEMENT. THEN WASHED-UP PUMP LINES AND ASSOCIATED EQUIPMENT. WOC 4 HOURS. ND BOP. CUT OFF CASING BELOW CASING FLANGE. CEMENT WAS AT SURFACE IN THE 4 1/2" CASING. TAG CEMENT IN SURFACE CASING ANNULUS AT 30'. INSTALL DRY HOLE MARKER. TOP OFF SURFACE CASING ANNULUS WITH 2.5 BBLS OF SLURRY. RIG DOWN CEMENTERS. THE P/A IS COMPLETE. RIG DOWN RIG AND SUPPORT EQUIPMENT.

**WELL WAS PLUGGED AND ABANDONED ON 10/9/2024.**

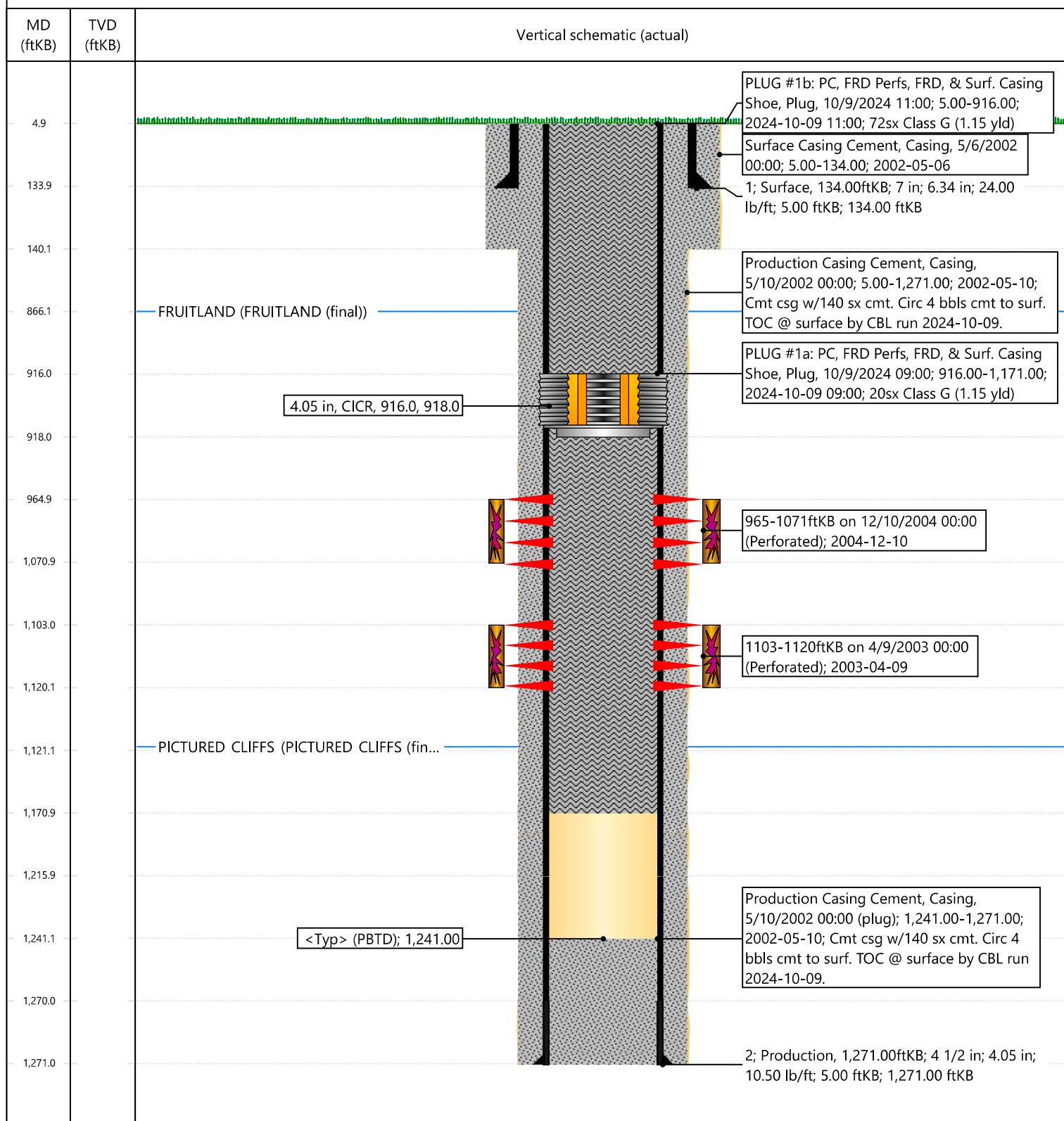


## Current Schematic - Version 3

Well Name: WF FEDERAL 28 #1R

API / UWI 3004530851	Surface Legal Location T30N-R14W-S28	Field Name Basin Dakota	Route 0204	State/Province New Mexico	Well Configuration Type Vertical
Ground Elevation (ft) 5,573.00	Original KB/RT Elevation (ft) 5,578.00	Tubing Hanger Elevation (ft)	RKB to GL (ft) 5.00	KB-Casing Flange Distance (ft)	KB-Tubing Hanger Distance (ft)
<b>Tubing Strings</b>					
Run Date 11/8/2005 00:00	Set Depth (ftKB) 1,190.00	String Max Nominal OD (in) 2 3/8	String Min Nominal ID (in) 2.00	Weight/Length (lb/ft) 4.70	Original Spud Date 5/6/2002 00:00

## Original Hole [Vertical]



**Priscilla Shorty**

---

**From:** Kuehling, Monica, EMNRD <monica.kuehling@emnrd.nm.gov>  
**Sent:** Wednesday, October 9, 2024 1:16 PM  
**To:** Rennick, Kenneth G; John LaMond; Kade, Matthew H  
**Cc:** Farmington Regulatory Techs; Clay Padgett; Lee Murphy; Rustin Mikeska; Matt Gustamantes - (C); Darren Randall - (C); John LaMond  
**Subject:** RE: [EXTERNAL] P&A Revision Request for Hilcorp's WF FEDERAL 28 1R (API # 3004530851)

**CAUTION:** External sender. DO NOT open links or attachments from UNKNOWN senders.

NMOCD approves below

Thank you

Monica Kuehling  
Compliance Officer Supervisor  
Deputy Oil and Gas Inspector  
New Mexico Oil Conservation Division  
North District  
Cell Phone: 505-320-0243  
Email - monica.kuehling@emnrd.nm.gov

---

**From:** Rennick, Kenneth G <krennick@blm.gov>  
**Sent:** Wednesday, October 9, 2024 11:43 AM  
**To:** John LaMond <jlamond@hilcorp.com>; Kuehling, Monica, EMNRD <monica.kuehling@emnrd.nm.gov>; Kade, Matthew H <mkade@blm.gov>  
**Cc:** Farmington Regulatory Techs <FarmingtonRegulatoryTechs@hilcorp.com>; Clay Padgett <cpadgett@hilcorp.com>; Lee Murphy <lmurphy@hilcorp.com>; Rustin Mikeska <rmikeska@hilcorp.com>; Matt Gustamantes - (C) <Matt.Gustamantes@hilcorp.com>; Darren Randall - (C) <Darren.Randall@hilcorp.com>; John LaMond <jlamond@hilcorp.com>  
**Subject:** Re: [EXTERNAL] P&A Revision Request for Hilcorp's WF FEDERAL 28 1R (API # 3004530851)

To confirm, the BLM concurs with the evaluation.

Get [Outlook for iOS](#)

---

**From:** John LaMond <jlamond@hilcorp.com>  
**Sent:** Wednesday, October 9, 2024 11:38:09 AM  
**To:** Kuehling, Monica, EMNRD <[monica.kuehling@emnrd.nm.gov](mailto:monica.kuehling@emnrd.nm.gov)>; Rennick, Kenneth G <[krennick@blm.gov](mailto:krennick@blm.gov)>; Kade, Matthew H <[mkade@blm.gov](mailto:mkade@blm.gov)>  
**Cc:** Farmington Regulatory Techs <[FarmingtonRegulatoryTechs@hilcorp.com](mailto:FarmingtonRegulatoryTechs@hilcorp.com)>; Clay Padgett <[cpadgett@hilcorp.com](mailto:cpadgett@hilcorp.com)>; Lee Murphy <[lmurphy@hilcorp.com](mailto:lmurphy@hilcorp.com)>; Rustin Mikeska <[rmikeska@hilcorp.com](mailto:rmikeska@hilcorp.com)>; Matt Gustamantes - (C) <[Matt.Gustamantes@hilcorp.com](mailto:Matt.Gustamantes@hilcorp.com)>; Darren Randall - (C) <[Darren.Randall@hilcorp.com](mailto:Darren.Randall@hilcorp.com)>; John LaMond

<[jlamond@hilcorp.com](mailto:jlamond@hilcorp.com)>

**Subject:** RE: [EXTERNAL] P&A Revision Request for Hilcorp's WF FEDERAL 28 1R (API # 3004530851)

Good afternoon Monica and Kenny,

Attached is the CBL that was run today (2024-10-09) on the WF FEDERAL 28 1R. It shows TOC @ surface.

Moving forward, Hilcorp received verbal approval from the NMOCD & BLM to proceed with PLUG #1b as previously approved in the email chain below.

Please let me know if you have any questions.

Thanks,

**John LaMond**

Operations Engineer – Technical Services

Hilcorp Energy Company

1111 Travis

Houston, TX 77002

346-237-2210 (Office)

832-754-9692 (Cell)

[jlamond@hilcorp.com](mailto:jlamond@hilcorp.com)

---

**From:** Kuehling, Monica, EMNRD <[monica.kuehling@emnrd.nm.gov](mailto:monica.kuehling@emnrd.nm.gov)>

**Sent:** Thursday, October 3, 2024 12:16 PM

**To:** Rennick, Kenneth G <[krennick@blm.gov](mailto:krennick@blm.gov)>; John LaMond <[jlamond@hilcorp.com](mailto:jlamond@hilcorp.com)>; Kade, Matthew H <[mkade@blm.gov](mailto:mkade@blm.gov)>

**Cc:** Farmington Regulatory Techs <[FarmingtonRegulatoryTechs@hilcorp.com](mailto:FarmingtonRegulatoryTechs@hilcorp.com)>; Clay Padgett <[cpadgett@hilcorp.com](mailto:cpadgett@hilcorp.com)>; Lee Murphy <[lmurphy@hilcorp.com](mailto:lmurphy@hilcorp.com)>; Rustin Mikeska <[rmikeska@hilcorp.com](mailto:rmikeska@hilcorp.com)>; Matt Gustamantes - (C) <[Matt.Gustamantes@hilcorp.com](mailto:Matt.Gustamantes@hilcorp.com)>; Darren Randall - (C) <[Darren.Randall@hilcorp.com](mailto:Darren.Randall@hilcorp.com)>

**Subject:** RE: [EXTERNAL] P&A Revision Request for Hilcorp's WF FEDERAL 28 1R (API # 3004530851)

**CAUTION:** External sender. DO NOT open links or attachments from UNKNOWN senders.

NMOCD approves below

Thank you

Monica Kuehling

Compliance Officer Supervisor

Deputy Oil and Gas Inspector

New Mexico Oil Conservation Division

North District

Cell Phone: 505-320-0243

Email - [monica.kuehling@emnrd.nm.gov](mailto:monica.kuehling@emnrd.nm.gov)

---

**From:** Rennick, Kenneth G <[krennick@blm.gov](mailto:krennick@blm.gov)>  
**Sent:** Thursday, October 3, 2024 11:15 AM  
**To:** John LaMond <[jlamond@hilcorp.com](mailto:jlamond@hilcorp.com)>; Kuehling, Monica, EMNRD <[monica.kuehling@emnrd.nm.gov](mailto:monica.kuehling@emnrd.nm.gov)>; Kade, Matthew H <[mkade@blm.gov](mailto:mkade@blm.gov)>  
**Cc:** Farmington Regulatory Techs <[FarmingtonRegulatoryTechs@hilcorp.com](mailto:FarmingtonRegulatoryTechs@hilcorp.com)>; Clay Padgett <[cpadgett@hilcorp.com](mailto:cpadgett@hilcorp.com)>; Lee Murphy <[lmurphy@hilcorp.com](mailto:lmurphy@hilcorp.com)>; Rustin Mikeska <[rmikeska@hilcorp.com](mailto:rmikeska@hilcorp.com)>; Matt Gustamantes - (C) <[Matt.Gustamantes@hilcorp.com](mailto:Matt.Gustamantes@hilcorp.com)>; Darren Randall - (C) <[Darren.Randall@hilcorp.com](mailto:Darren.Randall@hilcorp.com)>  
**Subject:** Re: [EXTERNAL] P&A Revision Request for Hilcorp's WF FEDERAL 28 1R (API # 3004530851)

The BLM finds the updated procedure appropriate.

Kenneth (Kenny) Rennick

Petroleum Engineer

Bureau of Land Management  
Farmington Field Office  
6251 College Blvd  
Farmington, NM 87402

Email: [krennick@blm.gov](mailto:krennick@blm.gov)  
Mobile & Text: 505.497.0019

---

**From:** John LaMond <[jlamond@hilcorp.com](mailto:jlamond@hilcorp.com)>  
**Sent:** Thursday, October 3, 2024 10:31 AM  
**To:** Kuehling, Monica, EMNRD <[monica.kuehling@emnrd.nm.gov](mailto:monica.kuehling@emnrd.nm.gov)>; Rennick, Kenneth G <[krennick@blm.gov](mailto:krennick@blm.gov)>; Kade, Matthew H <[mkade@blm.gov](mailto:mkade@blm.gov)>  
**Cc:** Farmington Regulatory Techs <[FarmingtonRegulatoryTechs@hilcorp.com](mailto:FarmingtonRegulatoryTechs@hilcorp.com)>; Clay Padgett <[cpadgett@hilcorp.com](mailto:cpadgett@hilcorp.com)>; John LaMond <[jlamond@hilcorp.com](mailto:jlamond@hilcorp.com)>; Lee Murphy <[lmurphy@hilcorp.com](mailto:lmurphy@hilcorp.com)>; Rustin Mikeska <[rmikeska@hilcorp.com](mailto:rmikeska@hilcorp.com)>; Matt Gustamantes - (C) <[Matt.Gustamantes@hilcorp.com](mailto:Matt.Gustamantes@hilcorp.com)>; Darren Randall - (C) <[Darren.Randall@hilcorp.com](mailto:Darren.Randall@hilcorp.com)>  
**Subject:** [EXTERNAL] P&A Revision Request for Hilcorp's WF FEDERAL 28 1R (API # 3004530851)

**This email has been received from outside of DOI - Use caution before clicking on links, opening attachments, or responding.**

Good morning Monica and Kenny,

Hilcorp is planning to work on the WF FEDERAL 28 1R (API # 3004530851) P&A this week.

I have attached the approved P&A NOI, as well as an updated procedure based on the COAs in the approved NOI.



Based on the COAs, Hilcorp received verbal approval from the NMOCD and BLM for the following adjustments to the procedure:

- Hilcorp will mill out the existing CIBP @ 925'
- Hilcorp received verbal approval from the NMOCD & BLM to set a **4-1/2" CICR @ 916'**, and establish an injection rate below the CICR.
- Hilcorp will then pump PLUG #1a beneath the CICR from **916' to 1,171' (Class G)**. Hilcorp received verbal approval from the NMOCD & BLM to forego pumping PLUG #1a if Hilcorp is unable to establish an injection rate beneath the CICR, and proceed with the remainder of the procedure.
- Hilcorp will then run a CBL; adjust plugs as needed.
- Hilcorp will then pump PLUG #1b above the CICR from **916' to surface (Class G)**.
- Please see the revised procedure attached and below. The updated Proposed P&A wellbore schematic is also attached.



**HILCORP ENERGY COMPANY**  
**WF FEDERAL 28 1R**  
**P&A NOI**

API #: 3004530851

**JOB PROCEDURES**

1. Contact NMOCD and BLM (where applicable) 24 hours prior to MIRU.
2. Hold pre-job safety meeting. Verify cathodic is off. Comply with all NMOCD, BLM, and HEC safety and environmental reg
3. MIRU service rig and associated equipment; NU and test BOP.
4. TIH w/ work string & mill. Mill out CIBP @ +/- 925'.
5. RIH w/ **4-1/2" CICR** & set @ **+/- 916'**. Establish injection rate below CICR.
6. **PLUG #1a: 20sx of Class G Cement (15.8 PPG, 1.15 yield); PC Top @ 1,121' | FRD Perfs @ 965' | FRD Top @ 866' |**  
 Pump 20sx of cement beneath the 4-1/2" CICR (est. **TOC @ +/- 916'** & est. **BOC @ +/- 1,171'**). **\*Note that this cement v**  
**volume to place cement 50' below the PC formation top. NMOCD also granted verbal approval to forego pumping**  
**establish injection rate beneath the 4-1/2" CICR @ 916', and proceed with the remainder of the procedure.**
7. Load the well as needed. Pressure test the casing above the plug to **560 psig**.
8. RU Wireline. Run CBL. Record Top of Cement. All subsequent plugs below are subject to change pending CBL results.
9. TIH w/ work string & tag CICR @ **+/- 916'**.
10. **PLUG #1b: 72sx of Class G Cement (15.8 PPG, 1.15 yield); PC Top @ 1,121' | FRD Perfs @ 965' | FRD Top @ 866'**  
 Pump a 72 sack balanced cement plug inside the 4-1/2" casing (est. **TOC @ +/- 0'** & est. **BOC @ +/- 916'**). Wait on Cem  
**\*Note cement plug lengths & volumes account for excess.**
11. ND BOP, cut off casing below casing flange. Top off cement in surface casing annulus, if needed. Install a P&A marker wit  
 down, move off location, cut off anchors, and restore location.



Do the NMOCD and BLM approve of the revised procedure?

Thanks,

**John LaMond**

Operations Engineer – Technical Services

Hilcorp Energy Company

1111 Travis

Houston, TX 77002

346-237-2210 (Office)

832-754-9692 (Cell)

[jlamond@hilcorp.com](mailto:jlamond@hilcorp.com)

---

The information contained in this email message is confidential and may be legally privileged and is intended only for the use of the individual or entity named above. If you are not an intended recipient or if you have received this message in error, you are hereby notified that any dissemination, distribution, or copy of this email is strictly prohibited. If you have received this email in error, please immediately notify us by return email or telephone if the sender's phone number is listed above, then promptly and permanently delete this message.

While all reasonable care has been taken to avoid the transmission of viruses, it is the responsibility of the recipient to ensure that the onward transmission, opening, or use of this message and any attachments will not adversely affect its systems or data. No responsibility is accepted by the company in this regard and the recipient should carry out such virus and other checks as it considers appropriate.

---

---

The information contained in this email message is confidential and may be legally privileged and is intended only for the use of the individual or entity named above. If you are not an intended recipient or if you have received this message in error, you are hereby notified that any dissemination, distribution, or copy of this email is strictly prohibited. If you have received this email in error, please immediately notify us by return email or telephone if the sender's phone number is listed above, then promptly and permanently delete this message.

While all reasonable care has been taken to avoid the transmission of viruses, it is the responsibility of the recipient to ensure that the onward transmission, opening, or use of this message and any attachments will not adversely affect its systems or data. No responsibility is accepted by the company in this regard and the recipient should carry out such virus and other checks as it considers appropriate.

---

**District I**  
1625 N. French Dr., Hobbs, NM 88240  
Phone:(575) 393-6161 Fax:(575) 393-0720  
**District II**  
811 S. First St., Artesia, NM 88210  
Phone:(575) 748-1283 Fax:(575) 748-9720  
**District III**  
1000 Rio Brazos Rd., Aztec, NM 87410  
Phone:(505) 334-6178 Fax:(505) 334-6170  
**District IV**  
1220 S. St Francis Dr., Santa Fe, NM 87505  
Phone:(505) 476-3470 Fax:(505) 476-3462

State of New Mexico  
Energy, Minerals and Natural Resources  
Oil Conservation Division  
1220 S. St Francis Dr.  
Santa Fe, NM 87505

CONDITIONS  
  
Action 391539

CONDITIONS

Operator: HILCORP ENERGY COMPANY 1111 Travis Street Houston, TX 77002	OGRID: 372171
	Action Number: 391539
	Action Type: [C-103] Sub. Plugging (C-103P)

CONDITIONS

Created By	Condition	Condition Date
mkuehling	CBL in file - well plugged 10/9/2024	10/10/2024