

Submit 3 Copies To Appropriate District
Office
District I - (575) 393-6161
1625 N. French Dr., Hobbs, NM 88240
District II - (575) 748-1283
811 S. First St., Artesia, NM 88210
District III - (505) 334-6178
1000 Rio Brazos Rs., Aztec, NM 87410
District IV - (505) 476-3460
1220 S. St. Francis Dr., Santa Fe, NM
87505

State of New Mexico
Energy, Minerals and Natural Resources

Form C-103

Revised July 18, 2013

OIL CONSERVATION DIVISION
1220 South St. Francis Dr.
Santa Fe, NM 87505

WELL API NO. 30-045-34270
5. Indicate Type of Lease STATE <input checked="" type="checkbox"/> FEE <input type="checkbox"/>
6. State Oil & Gas Lease No. E-2739-3
7. Lease Name or Unit Agreement Name STATE
8. Well Number 1S
9. OGRID Number 372171
10. Pool name or Wildcat FRC - BASIN CB::FRUITLAND COAL

SUNDRY NOTICES AND REPORTS ON WELLS (DO NOT USE THIS FORM FOR PROPOSALS TO DRILL OR TO DEEPEN OR PLUG BACK TO A DIFFERENT RESERVOIR. USE "APPLICATION FOR PERMIT" (FORM C-101) FOR SUCH PROPOSALS.)	
1. Type of Well: <input type="checkbox"/> Oil Well <input checked="" type="checkbox"/> Gas Well <input type="checkbox"/> Other	
2. Name of Operator Hilcorp Energy Company	
3. Address of Operator 382 Road 3100 Aztec, NM 87410	
4. Well Location Unit Letter E Footage 2475' FNL & 990' FWL Section 16 Township 027N Range 009W SAN JUAN COUNTY	
11. Elevation (Show whether DR, RKB, RT, GR, etc.) 6267' GR	

12. CHECK APPROPRIATE BOX(ES) TO INDICATE NATURE OF NOTICE, REPORT OR OTHER DATA

NOTICE OF INTENTION TO:

PERFORM REMEDIAL WORK <input type="checkbox"/>	PLUG AND ABANDON <input type="checkbox"/>
TEMPORARILY ABANDON <input type="checkbox"/>	CHANGE PLANS <input type="checkbox"/>
PULL OR ALTER CASING <input type="checkbox"/>	MULTIPLE COMPL <input type="checkbox"/>
DOWNHOLE COMMINGLE <input type="checkbox"/>	
CLOSED-LOOP SYSTEM <input type="checkbox"/>	
OTHER: <input type="checkbox"/>	

SUBSEQUENT REPORT OF:

REMEDIAL WORK <input type="checkbox"/>	ALTERING CASING <input type="checkbox"/>
COMMENCE DRILLING OPNS. <input type="checkbox"/>	P AND A <input checked="" type="checkbox"/>
CASING/CEMENT JOB <input type="checkbox"/>	
OTHER: <input type="checkbox"/>	

13. Describe proposed or completed operations. (Clearly state all pertinent details, and give pertinent dates, including estimated date of starting any proposed work). SEE RULE 19.15.7.14 NMAC. For Multiple Completions: Attach wellbore diagram of proposed completion or recompletion.

Hilcorp Energy has plugged and abandoned the subject well on 10/23/2024 per the attached daily report.

Spud Date: **9/19/2007**

Rig Released Date:

I hereby certify that the information above is true and complete to the best of my knowledge and belief.

SIGNATURE Priscilla Shorty **TITLE** Operations/Regulatory Tech - Sr. **DATE** 10/24/2024

Type or print name Priscilla Shorty **E-mail address:** pshorty@hilcorp.com **PHONE:** 505.324.5188

APPROVED BY: _____ **TITLE** _____ **DATE** _____

Conditions of Approval (if any):

STATE 1S

30.045.34270

PLUG AND ABANDONMENT

10/22/2024 - SPOT IN RIG AND EQUIP. R/U RIG AND CEMENT PACKAGE. CK PRESSURES SICP-46 PSI, SITP-5 PSI, SIBHP-9 PSI. BDW 5 MIN. N/D WH. N/U BOP. FT AND PSI TEST BOP (GOOD). UNLAND WELL. L/D PRODUCTION TUBING STRING. P/U 3-7/8 STRING MILL. TIH TO EOT @ 2100'. TOH AND L/D STRING MILL. P/U 4-1/2" CICR. TIH AND SET @ 2048'. **PUMP PLUG #1A (18SX CLASS G - 1.15 YIELD - 15.8 PPG CEMENT 2.14 BBLS MIX WATER 3.7 BBLS SLURRY BOC @ 2273' TOC @ 2048')**. STING OUT OF RETAINER. LOAD CASING WITH FRESH WATER. PSI TEST CASING (GOOD TEST). TOH W/ TUBING AND SETTING TOOL. R/U TWG WIRELINE. PERFORM CBL. TIH W/ TAG SUB. **PUMP PLUG 1B (20SX CLASS G - 1.15 YIELD - 15.8 PPG CEMENT 2.4 BBLS MIX WATER 4 BBLS SLURRY BOC @ 2048' TOC @ 1792')**. L/D 9 JTS TOH W/ 10 JTS TO DERRICK. SISW. SDFN. NMOCD REP JOHN DURHAM ON LOCATION TO WITNESS PLUGS.

10/23/2024 - CK PRESSURES. SICP-0 PSI, SITP-0 PSI, SIBHP-0 PSI. BDW 0 MIN. **HEC ENGINEER SENT THE CBL TO NMOCD AND DOCUMENTED VERBAL APPROVAL TO MAKE ADJUSTMENTS TO THE PROCEDURE BASED ON THE CBL.** TIH AND **TAG PLUG #1B @ 1809'**. L/D 12 JTS OF TUBING. TUBING PLUGGED OFF. TOH AND CLEAR PLUG. TIH 46 JTS OF TUBING. **PUMP PLUG #2 (23SX CLASS G - 1.15 YIELD - 15.8 PPG CEMENT 2.7 BBLS MIX WATER 4.7 BBLS SLURRY BOC @ 1465' TOC @ 1170')**. L/D 33 JTS. R/U HEC CEMENT PACKAGE AND **PUMP SURFACE PLUG (50SX CLASS G - 1.15 YIELD - 15.8 PPG - BOC @ 439' - EST TOC @ 11')**. WOC. N/D BOP. CUT OFF WELLHEAD. TAG CEMENT (47' IN 4-1/2" CASING - 33' IN 4-1/2 BY 7" ANNULUS). INSTALL P&A MARKER. TOP OFF BRADENHEAD, AND CASING W/ POLYLINE (26 SX CLASS G - 1.15 YIELD - 15.8 PPG). RD RR. NMOCD REP JOHN DURHAM ON LOCATION TO WITNESS PLUGS.

WELL WAS PLUGGED AND ABANDONED ON 10/23/2024.

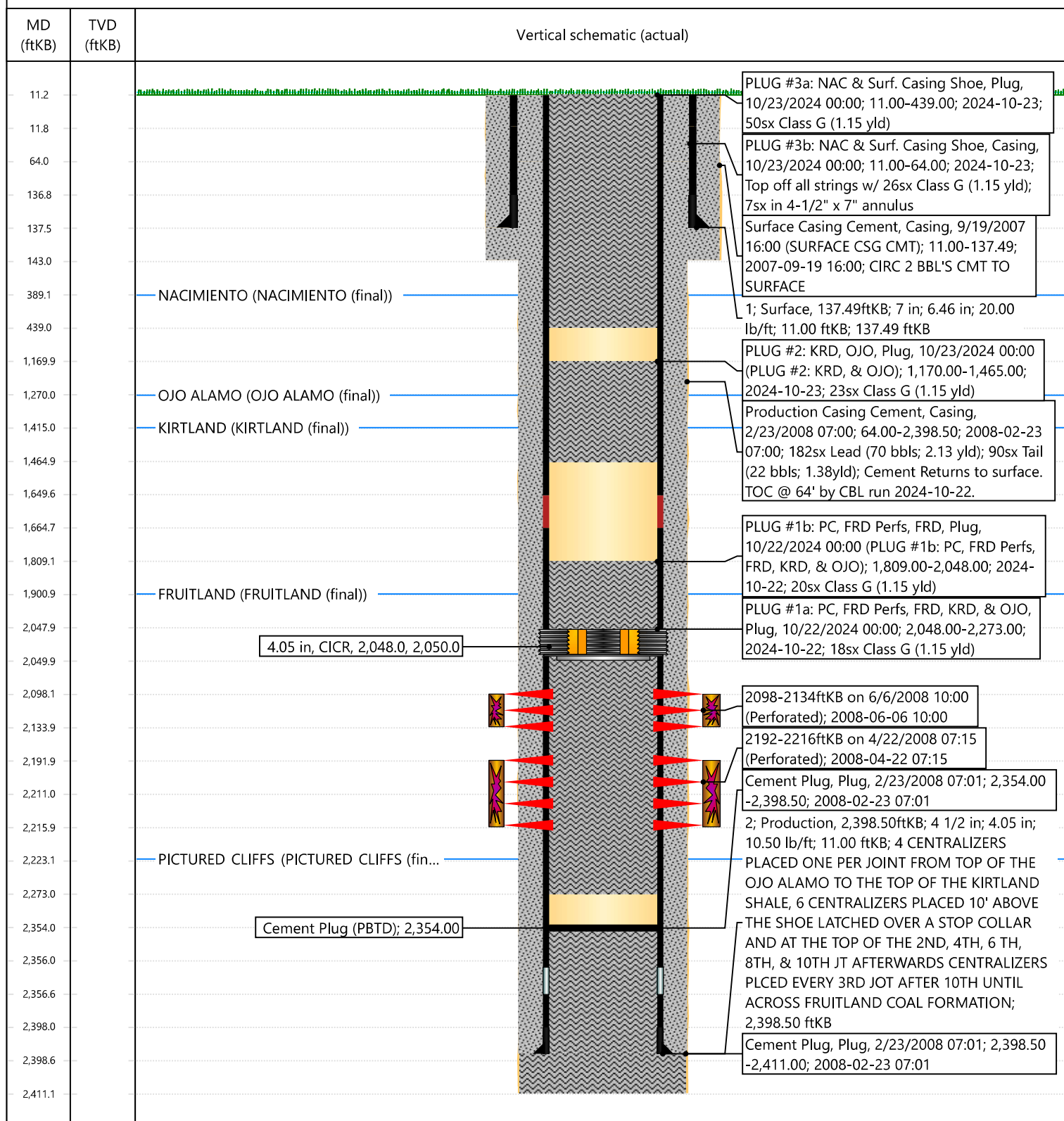


Current Schematic - Version 3

Well Name: STATE #1S

API / UWI 3004534270	Surface Legal Location 016-027N-009W-E	Field Name BASIN FRUITLAND COAL	Route 0903	State/Province NEW MEXICO	Well Configuration Type VERTICAL
Ground Elevation (ft) 6,267.00	Original KB/RT Elevation (ft) 6,278.00	Tubing Hanger Elevation (ft)	RKB to GL (ft) 11.00	KB-Casing Flange Distance (ft)	KB-Tubing Hanger Distance (ft)
Tubing Strings					
Run Date 6/25/2008 00:06	Set Depth (ftKB) 2,223.30	String Max Nominal OD (in) 2 3/8	String Min Nominal ID (in) 2.00	Weight/Length (lb/ft) 4.70	Original Spud Date 9/19/2007 10:30

Original Hole [VERTICAL]



Priscilla Shorty

From: Kuehling, Monica, EMNRD <monica.kuehling@emnrd.nm.gov>
Sent: Wednesday, October 23, 2024 6:46 AM
To: John LaMond
Cc: Farmington Regulatory Techs; Matt Gustamantes - (C); Clay Padgett; Lee Murphy; Rustin Mikeska
Subject: RE: [EXTERNAL] P&A Revision Request for Hilcorp's STATE 1S (API # 3004534270)

CAUTION: External sender. DO NOT open links or attachments from UNKNOWN senders.

Approved

Thank you

Monica Kuehling
Compliance Officer Supervisor
Deputy Oil and Gas Inspector
New Mexico Oil Conservation Division
North District
Cell Phone: 505-320-0243
Email - monica.kuehling@emnrd.nm.gov

From: John LaMond <jlamond@hilcorp.com>
Sent: Wednesday, October 23, 2024 6:20 AM
To: Kuehling, Monica, EMNRD <monica.kuehling@emnrd.nm.gov>
Cc: Farmington Regulatory Techs <FarmingtonRegulatoryTechs@hilcorp.com>; Matt Gustamantes - (C) <Matt.Gustamantes@hilcorp.com>; Clay Padgett <cpadgett@hilcorp.com>; Lee Murphy <lmurphy@hilcorp.com>; Rustin Mikeska <rmikeska@hilcorp.com>; John LaMond <jlamond@hilcorp.com>
Subject: RE: [EXTERNAL] P&A Revision Request for Hilcorp's STATE 1S (API # 3004534270)

Corrected the plug name below (PLUG #1b).

Thanks,

John LaMond

Operations Engineer – Technical Services
Hilcorp Energy Company
1111 Travis
Houston, TX 77002
346-237-2210 (Office)
832-754-9692 (Cell)
jlamond@hilcorp.com

From: John LaMond <jlamond@hilcorp.com>
Sent: Wednesday, October 23, 2024 7:18 AM
To: Kuehling, Monica, EMNRD <monica.kuehling@emnrd.nm.gov>
Cc: Farmington Regulatory Techs <FarmingtonRegulatoryTechs@hilcorp.com>; Matt Gustamantes - (C) <Matt.Gustamantes@hilcorp.com>; Clay Padgett <cpadgett@hilcorp.com>; John LaMond <jlamond@hilcorp.com>; Lee Murphy <lmurphy@hilcorp.com>; Rustin Mikeska <rmikeska@hilcorp.com>
Subject: RE: [EXTERNAL] P&A Revision Request for Hilcorp's STATE 1S (API # 3004534270)

Good morning Monica,

Attached is the CBL that was run yesterday (2024-10-22) on the STATE 1S. It shows TOC @ ~64'.

Moving forward, based on the results of the CBL Hilcorp received verbal approval from the NMOCD to make the following adjustments to the previously approved procedure:

- PLUG #1b will now be split into two separate plugs; a single inside plug covering the FRD & another plug covering both the KR D & OJO. Those PLUGS will now be called PLUG #1b & PLUG #2, respectively.
- **PLUG #1b: 20sx of Class G Cement (15.8 PPG, 1.15 yield); PC Top @ 2,223' | FRD Perfs @ 2,098' | FRD Top @ 1,901':**
 - Pump a 20 sack balanced cement plug on top of the CICR. (est. **TOC @ +/- 1,801'** & est. **BOC @ +/- 2,048'**).
 - Wait on Cement for 4 hours, tag TOC w/ work string. *Note cement plug lengths & volumes account for excess.
- **PLUG #2: 23sx of Class G Cement (15.8 PPG, 1.15 yield); KR D Top @ 1,415' | OJO Top @ 1,270':**
 - Pump a 23 sack balanced cement plug inside the 4-1/2" casing (est. **TOC @ +/- 1,170'** & est. **BOC @ +/- 1,465'**).
- **PLUG #3: 35sx of Class G Cement (15.8 PPG, 1.15 yield); NAC Top @ 389' | Surf. Casing Shoe @ 138':**
 - TIH w/ work string to 439'
 - Pump a 35 sack balanced cement plug inside the 4-1/2" casing (est. **TOC @ +/- 0'** & est. **BOC @ +/- 439'**).
- Cut off wellhead, weld on P&A marker, & top off cement as needed
 - RIH w/ 1" polyline inside the 4-1/2" x 7" casing annulus; top off w/ cement from 64' to surface (~7sx)

Thanks,

John LaMond

Operations Engineer – Technical Services
Hilcorp Energy Company
1111 Travis
Houston, TX 77002
346-237-2210 (Office)
832-754-9692 (Cell)
jlamond@hilcorp.com

From: Kuehling, Monica, EMNRD <monica.kuehling@emnrd.nm.gov>
Sent: Tuesday, September 17, 2024 9:16 AM
To: John LaMond <jlamond@hilcorp.com>
Subject: RE: [EXTERNAL] P&A Revision Request for Hilcorp's STATE 1S (API # 3004534270)

CAUTION: External sender. DO NOT open links or attachments from UNKNOWN senders.

Changes are approved

Thank you

Monica Kuehling
Compliance Officer Supervisor
Deputy Oil and Gas Inspector
New Mexico Oil Conservation Division
North District
Office Phone: 505-334-6178 ext. 123
Cell Phone: 505-320-0243
Email - monica.kuehling@emnrd.nm.gov

From: John LaMond <jlamond@hilcorp.com>
Sent: Tuesday, September 17, 2024 7:45 AM
To: Kuehling, Monica, EMNRD <monica.kuehling@emnrd.nm.gov>
Subject: RE: [EXTERNAL] P&A Revision Request for Hilcorp's STATE 1S (API # 3004534270)

No ma'am, not currently. We should be moving on it within the next few weeks.

Thanks,

John LaMond

Operations Engineer – Technical Services
Hilcorp Energy Company
1111 Travis
Houston, TX 77002
346-237-2210 (Office)
832-754-9692 (Cell)
jlamond@hilcorp.com

From: Kuehling, Monica, EMNRD <monica.kuehling@emnrd.nm.gov>
Sent: Monday, September 16, 2024 12:25 PM
To: John LaMond <jlamond@hilcorp.com>
Subject: RE: [EXTERNAL] P&A Revision Request for Hilcorp's STATE 1S (API # 3004534270)

CAUTION: External sender. DO NOT open links or attachments from UNKNOWN senders.

Good morning

Are you on this well

From: John LaMond <jlamond@hilcorp.com>
Sent: Monday, September 16, 2024 6:48 AM
To: Kuehling, Monica, EMNRD <monica.kuehling@emnrd.nm.gov>

Cc: Farmington Regulatory Techs <FarmingtonRegulatoryTechs@hilcorp.com>; Matt Gustamantes - (C) <Matt.Gustamantes@hilcorp.com>; Clay Padgett <cpadgett@hilcorp.com>; Lee Murphy <lmurphy@hilcorp.com>; Rustin Mikeska <rmikeska@hilcorp.com>; John LaMond <jlamond@hilcorp.com>
Subject: RE: [EXTERNAL] P&A Revision Request for Hilcorp's STATE 1S (API # 3004534270)

Good morning Monica,

There is no CBL on file for this well. We plan to run one during the job (Step #8).

Thanks,

John LaMond

Operations Engineer – Technical Services
Hilcorp Energy Company
1111 Travis
Houston, TX 77002
346-237-2210 (Office)
832-754-9692 (Cell)
jlamond@hilcorp.com

From: Kuehling, Monica, EMNRD <monica.kuehling@emnrd.nm.gov>
Sent: Friday, September 6, 2024 3:41 PM
To: John LaMond <jlamond@hilcorp.com>
Cc: Farmington Regulatory Techs <FarmingtonRegulatoryTechs@hilcorp.com>; Matt Gustamantes - (C) <Matt.Gustamantes@hilcorp.com>; Clay Padgett <cpadgett@hilcorp.com>; John LaMond <jlamond@hilcorp.com>; Lee Murphy <lmurphy@hilcorp.com>; Rustin Mikeska <rmikeska@hilcorp.com>
Subject: Re: [EXTERNAL] P&A Revision Request for Hilcorp's STATE 1S (API # 3004534270)

CAUTION: External sender. DO NOT open links or attachments from UNKNOWN senders.

Is there a cbl

Get [Outlook for iOS](#)

From: John LaMond <jlamond@hilcorp.com>
Sent: Friday, September 6, 2024 10:54:38 AM
To: Kuehling, Monica, EMNRD <monica.kuehling@emnrd.nm.gov>
Cc: Farmington Regulatory Techs <FarmingtonRegulatoryTechs@hilcorp.com>; Matt Gustamantes - (C) <Matt.Gustamantes@hilcorp.com>; Clay Padgett <cpadgett@hilcorp.com>; John LaMond <jlamond@hilcorp.com>; Lee Murphy <lmurphy@hilcorp.com>; Rustin Mikeska <rmikeska@hilcorp.com>
Subject: [EXTERNAL] P&A Revision Request for Hilcorp's STATE 1S (API # 3004534270)

CAUTION: This email originated outside of our organization. Exercise caution prior to clicking on links or opening attachments.

Good morning Monica,

Hilcorp is planning to work on the STATE 1S (API # 3004534270) P&A in the near future.

I have attached the approved P&A NOI, as well as an updated procedure based on the COAs in the approved NOI.

Based on the COAs, Hilcorp requests the following adjustments to the approved procedure:

- Plug #1a has been added: The cement volume pumped below the CICR @ 2,048' will be equivalent to the amount to cover cement to 2,273' (This will cover the PC top as requested by the NMOCD).
- Please see the revised procedure attached and below. The updated Proposed P&A wellbore schematic is also attached.



HILCORP ENERGY COMPANY STATE 1S P&A NOI

API #: 3004534270

JOB PROCEDURES

1. Contact NMOCD and BLM (where applicable) 24 hours prior to MIRU.
2. Hold pre-job safety meeting. Verify cathodic is off. Comply with all NMOCD, BLM, and HEC safety and environmental requirements.
3. MIRU service rig and associated equipment; NU and test BOP.
4. Set a 4-1/2" CIBP or CICR at +/- 2,048' to isolate the FRD Perfs.
5. PU & TIH w/ work string to +/- 2,048'. Sting into CICR @ 2,048' & establish injection.
6. **PLUG #1a: 18sx of Class G Cement (15.8 PPG, 1.15 yield); PC Top @ 2,223' | FRD Perfs @ 2,098' | FRD Top @ 1,098'.** Pump 18sx of cement beneath the 4-1/2" CICR (est. **TOC @ +/- 2,048'** & est. **BOC @ +/- 2,273'**).
7. Load the well as needed. Pressure test the casing above the plug to **560 psig**.
8. RU Wireline. Run CBL. Record Top of Cement. All subsequent plugs below are subject to change pending CBL results.
9. PU & TIH w/ work string to +/- 2,048'.
10. **PLUG #1b: 69sx of Class G Cement (15.8 PPG, 1.15 yield); PC Top @ 2,223' | FRD Perfs @ 2,098' | FRD Top @ 1,098'.** Pump a 69 sack balanced cement plug inside the 4-1/2" casing (est. **TOC @ +/- 1,170'** & est. **BOC @ +/- 2,048'**). Wait on cement plug lengths & volumes account for excess.
11. TOOH w/ work string. TIH and perforate squeeze holes @ +/- 439'. TIH with tubing/work string. Establish circulation.
12. **PLUG #2: 77sx of Class G Cement (15.8 PPG, 1.15 yield); NAC Top @ 389' | Surf. Casing Shoe @ 138'.** Pump 27sx of cement in the 4-1/2" casing X 6-1/4" open hole annulus (est. **TOC @ +/- 138'** & est. **BOC @ +/- 439'**). Cor casing annulus (est. **TOC @ +/- 0'** & est. **BOC @ +/- 138'**). Pump a 35 sack balanced cement plug inside the 4-1/2" casing. hrs, tag TOC w/ work string.
13. ND BOP, cut off casing below casing flange. Top off cement in surface casing annulus, if needed. Install a P&A marker v off location, cut off anchors, and restore location.

Does the NMOCD approve of the revised procedure?

Thanks,

John LaMond

Operations Engineer – Technical Services

Hilcorp Energy Company

1111 Travis

Houston, TX 77002

346-237-2210 (Office)

832-754-9692 (Cell)

jlamond@hilcorp.com

District I
1625 N. French Dr., Hobbs, NM 88240
Phone:(575) 393-6161 Fax:(575) 393-0720
District II
811 S. First St., Artesia, NM 88210
Phone:(575) 748-1283 Fax:(575) 748-9720
District III
1000 Rio Brazos Rd., Aztec, NM 87410
Phone:(505) 334-6178 Fax:(505) 334-6170
District IV
1220 S. St Francis Dr., Santa Fe, NM 87505
Phone:(505) 476-3470 Fax:(505) 476-3462

State of New Mexico
Energy, Minerals and Natural Resources
Oil Conservation Division
1220 S. St Francis Dr.
Santa Fe, NM 87505

CONDITIONS

Action 395556

CONDITIONS

Operator: HILCORP ENERGY COMPANY 1111 Travis Street Houston, TX 77002	OGRID: 372171
	Action Number: 395556
	Action Type: [C-103] Sub. Plugging (C-103P)

CONDITIONS

Created By	Condition	Condition Date
mkuehling	CBL in log file - well plugged 10/23/2024	11/6/2024