



Well Operations Summary L48

Well Name: SAN JUAN 27-5 UNIT NP #330 ST1

API: 3003925522

Field: BSN (FTLD COAL)

#3046

State: NEW MEXICO

Permit to Drill (PTD) #:

Sundry #:

Rig/Service: 3

Jobs

Actual Start Date: 9/2/2024

End Date:

Report Number 1	Report Start Date 9/2/2024	Report End Date 9/3/2024
--------------------	-------------------------------	-----------------------------

Operation

MOVED IN AND SET UP CAMP'S, HAULED IN MISC PIPE BASKET'S ONTO THE SJ 29-7 NP 330 ST1, 18:00 RIG RELEASED ON THE SJ 29-7 NP 516, FINISH RIG DOWN, LAY OVER DERRICK AND PREP FOR MOVE TO THE SJ 29-7 NP 330 ST1, WAIT ON DAYLIGHT, 90% RIGGED DOWN 10% MOVED ,

Report Number 2	Report Start Date 9/3/2024	Report End Date 9/4/2024
--------------------	-------------------------------	-----------------------------

Operation

REMOVE DERRICK FROM CARRIER, FINISH MOVING RIG EQUIPMENT AND SOLIDS CONTROL EQUIP. TO NEW LOCATION, REINSTALL DERRICK, MIRU ON NEW LOCATION.

SET SUB , RAMP, UNIT, AND EQUIPMENT, RAISE DERRICK, RIG UP PUMP'S, PITS, ELECTRICAL, FUEL, WATER, RIG FLOOR, HANG TOP DRIVE TRACK, PU TOP DRIVE, RU TOP DRIVE AND SERVICE LOOP. (NOTE: RIG UP TRUCKS DONE @ 20:30 HRS.) 100% MOVED AND 100% RIGGED UP

Report Number 3	Report Start Date 9/4/2024	Report End Date 9/5/2024
--------------------	-------------------------------	-----------------------------

Operation

WELLHEAD TOO HIGH FOR 17 KB, 45IN ABOVE GROUND LEVEL. DISSASSEMBLE BOP CONFIGURATION. REMOVE MUD CROSS AND DV ROTATING HEAD.

NIPPLE UP BOP, CHANGING CONFIGURATION BY UTILIZING PORTED FLANGES ON DOUBLE RAM BODY FOR RELIEF AND KILL 2-1/16 SIDE PORTS. WELDER SHORTEN BODY ON DV ROTATING HEAD

PJSM PRESSURE TEST BOPE: INSTALL TEST PLUG, OPEN CSG HEAD VALVE. TEST BLIND RAMS, INNER VALVES, CHECK VALVE, HCR, CHOKE LINE, CHOKE VALVES, CHOKES. PIPE RAMS, UPPER TDS VALVE TIW IBOP: 250PSI 5MIN 3000PSI 10MIN. ANNULAR 250PSI 5MIN 2100 PSI 10MIN. ACCUMULATOR DRAW DOWN TEST 2000 PSI REMAINING. CLOSE CSG HEAD VALVE. NOTE: PRESSURE TEST WAS NOT WITNESSED BY ANY GOVERNMENT AGENCIES

RE-INSTALL MODIFIED DV ROTATING HEAD, CENTER AND CHAIN OFF BOP, NIPPLE UP FLOW LINE, BLOUIE LINE , FLAIR BOX, 3" PANIC LINES AND BLOW DOWN TANK. PAD DOWN ALL

INSTALL CELLAR PUMP'S, MIX MUD, MOVE DRILL PIPE ONTO RACKS AND STRAP, ENTER IN PASON

MU MOUSE HOLE DRILLING ASSEMBLY, DRILL 60' MOUSE HOLE, INSTALL SHUCK, LD MOUSE HOLE DRILLING ASSEMBLY

Report Number 4	Report Start Date 9/5/2024	Report End Date 9/6/2024
--------------------	-------------------------------	-----------------------------

Operation

INSTALL MOUSEHOLE SHUCK, LD DRILLING ASSEMBLY

DUMMY RUN : PU 6 1/8" MINDOW MILL, BIT SUB, 6 1/8" STRING MILL, FLEX JT, 6 1/8" STRING MILL AND FLOAT SUB, TIH PICKING UP 30 JTS 4" HWDP AND DP FROM RACK'S. TAG @ 3268' SET 15K DOWN ON CIBP. (NOTE: NO TIGHT SPOTS ENCOUNTERED DURING TRIP)

CIRC BOTTOMS UP, POOH AND LAY DOWN MILL ASSEMBLY

PU WHIP STOCK / MILL UBHO ASSEMBLY AND TRIP IN HOLE TO SET DEPTH

PJSM, SPOT IN AND RIG UP WIRELINE. RUN IN HOLE WITH GYRO TOOL, GET 5 GOOD SEATS, ORIENTATE WHIPSTOCK @ 345 DEG AZ, TAG BP @ 3268' PU 5', SET ANCHOR @ 3263' , VERIFY WITH GYRO FINAL 346.38 DEG AZ, SHEAR OFF @ 35K DOWN, PULL OUT OF HOLE WITH WIRELINE AND RIG DOWN. (NOTE TOP OF WHIPSTOCK SLIDE @ 3245' BOTTOM @ 3255') 6' OF RATHOLE TO 3261'

MILL 6 1/8" WINDOW IN CASING F/ 3245' TO 3255' AND 6 FT RATHOLE TO 3261' 250 GPM

CIRCULATE, DRESS OFF WINDOW, WORK MILLS THROUGH WINDOW SEVERAL TIMES, PUMP HIGH VIS SWEEP

TOOH, GUAGE AND LAY DOWN MILLS (LEAD MILL 1/16" OUT OF GUAGE AND FOLLOW MILL IN GUAGE

PU, MU, **DIRECTIONAL BHA # 1 FOR SIDETRACK #1, 6 1/8" REED PDC MODEL TKF-53 D8 W/ 5X16 JETS, 0.98 TFA AND A DISCOVERY/SUPERHAWK MOTOR 7/8 LOBE 8.3 STAGE ' 5.06' BIT TO BEND, 1.5 DEG ANGLE 0.48 RPG.**

TRIP IN HOLE

Report Number 5	Report Start Date 9/6/2024	Report End Date 9/7/2024
--------------------	-------------------------------	-----------------------------

Operation

TRIP IN HOLE

DRILL, ROTATE & SLIDE 3261' - 4800' (1539' @ 66'/HR)

WOB: 10-15K

RPM: (TDS- 40 / MM-141) TOTAL 181

GPM: 295

SPP: 1650 PSI

DIFF: 250- 450 PSI

TRQ: 5-7

MW: 8.6-8.8 PPG

Report Number 6	Report Start Date 9/7/2024	Report End Date 9/8/2024
--------------------	-------------------------------	-----------------------------



Well Operations Summary L48

Well Name: SAN JUAN 27-5 UNIT NP #330 ST1

API: 3003925522	Field: BSN (FTLD COAL)	#3046	State: NEW MEXICO
	Sundry #:		Rig/Service: 3

Operation		
DRILL, ROTATE & SLIDE 4800' - 6264' (1464' @ 75'/HR) @ 5373' TAKE LOSSES BYPASS SCREENS AND LCM UP TO 10% WOB: 10-15K RPM: (TDS- 40 / MM-141) TOTAL 181 GPM: 295 SPP: 1750 PSI DIFF: 250- 450 PSI TRQ: 5-7 MW: 8.8-9.0 PPG		
@ 6260- 6264' STARTED TAKING LOSSES. PARTIAL RETURN'S LOSING CIRCULATION. STOP DRILLING PULL UP TO 6220', PUMPED 40 BBL LCM SWEEP FROM PILL PIT, REGAINED CIRC. DRILL STRING TORQUED UP AND STALLED AND BECAME DIFFERENTIALLY STUCK. WORK STUCK DRILL STRING, TRY TO FREE WITH FULL CIRCULATION, NO ADDITIONAL LOSSES		
Report Number 7	Report Start Date 9/8/2024	Report End Date 9/9/2024

Operation		
WORK STUCK DRILL STRING , TRY TO FREE WITH FULL CIRCULATION, NO ADDITIONAL LOSSES. SPOT IN UFS PIPE LAX 25 BBLS. GIVE ONE HOUR WITH NO FREEDOM. UNABLE TO CIRCULATE PLUGGED OFF. WORK PIPE WITH NO PROGRESS.		
RIG UP THE WIRELINE GROUP AND SEARCH FOR FREE POINT. 100% FREE AT 5255'		
RIH WITH 500 GRAIN CHARGE AND ATTEMPT TO BACK OFF @ 5238' NO SUCCESS FIRST ATTEMPT, RIH WITH 800 GRAIN CHARGE AND SHOOT FOR BACK OFF, JOINT AT SURFACE BACKED OFF AND PULLED FIRST FEW THREADS ON PIN END, POOH WIRE LINE, REPLACE BAD SURFACE JT. INSPECT BOX ON 2ND JT. OK, SCREW IN , PULL UP, SET SLIPS AND TORQUE UP JT. START TURNING TO LEFT. EITHER BACK OFF WAS SUCCESSFUL @ 5238' OR DRILL STRING BECAME FREE. STRING WT. 96K AND OVERPULL TO 104K		
TRIP OUT OF HOLE, 18 STANDS		
RIG DOWN WIRE LINE SHIVES. CLEAN OFF FLOOR,		
TOOH INTO 7" CASING		
SLIP AND CUT DRILLING LINE		
FINISH TOOH (NOTE: LAID DOWN THE 2 JT'S HWDP, PIN AND BOX WHERE IT WAS SHOT BUT NOT BROKE) PULLED 29 JTS OF HWDP, MISSING 1 JT AND DIRECTIONAL TOOLS. IF FISH HAS NOT MOVED DOWN HOLE, BIT @ 6221' TOP OF 1 JT HWDP AND DIR TOOLS @ 6037'		
P/U,MU FISHING TOOLS		
Report Number 8	Report Start Date 9/9/2024	Report End Date 9/10/2024

Operation		
P/U,MU FISHING TOOLS, SCREW IN SUB, FISHING JAR, W ACC, AND BUMPER SUB.		
TRIP IN HOLE JUST ABOVE FIRST LOSS ZONE 5100'		
CIRC CONDITION MUD TO 10% LCM		
TRIP IN HOLE CIRC EVERY OTHER STAND DOWN TO TOP OF FISH AT 6039'		
SCREW INTO FISH WORK PIPE WITH JAR. FULL CIRCULATION THRU FISH AND NO LOSSES 1 FOOT UPWARD PROGRESS		
DRILLING LINE ON DRUM TWISTED, CUT OFF 115' CIRCULATE WHILE REPAIRS MADE		
WORK PIPE WITH JAR FULL CIRCULATION THRU FISH AND NO LOSSES, SAME 1 FOOT UPWARD PROGRESS 4" DOWNWARD PROGRESS. TOP OF FISH @ 6039' BIT @ 6223'		
Report Number 9	Report Start Date 9/10/2024	Report End Date 9/11/2024

Operation		
ATTEMPT TO FREE FISH , WORK PIPE JARRING FULL CIRCULATION THRU FISH AND NO LOSSES, SAME 2.5 FOOT UPWARD PROGRESS 8" DOWNWARD PROGRESS. TOP OF FISH @ 6039' BIT @ 6223' SPOT PIPE LAX PILL #3 @ BHA. 17:00 HRS. MOVE IN AIR PKG. 2 COMPRESSOR'S, 1 BOOSTER, FUEL TANK AND RIG UP		
ATTEMPT TO FREE FISH , WORK PIPE JARRING, PUMP 1800 CFM AIR FOR 3MIN, CHASE BUBBLE WITH RIG PUMP TO NEAR BHA STOP PUMP AND JAR ON FISH, CYCLE PUMPS EACH 5MIN 2 BBL UNTIL CALCULATED VOLUME GETS ABOVE FISH, CIRCULATE OUT BUBBLE, REPEAT STEPS INCREACING THE AMOUNT OF AIR PUMPED BY 1 MIN EACH TIME. LAST ONE #4 6 MIN. FULL CIRCULATION THRU FISH AND 50 BBL LOSSES, TOTAL 3.5 FOOT UPWARD PROGRESS 10" DOWNWARD PROGRESS. TOP OF FISH @ 6039' BIT @ 6223' (NOTE JARS QUIT WORKING @ 03:00 HRS.) WORK PIPE AND ATTEMPT TO ROTATE) MAX PULL 260k		
Report Number 10	Report Start Date 9/11/2024	Report End Date 9/12/2024

Operation		
ATTEMPT TO FREE FISH , WORK PIPE JARRING, INJECT 600 CFM AIR CONTINUOUSLY WITH 230 GPM MUD AND OCCASIONAL BUBBLE SWEEPS. 2 INCHES PROGRESS FROM 6:00 TO 16:30.		
RIG UP DRAKE WIRELINE S.M. AND WIRELINE IN SHOOT 250 GRAIN AT 6039 TO BACK OFF FISHING SCREW IN SUB. POOH WITH WIRELINE AND RIG DOWN SHIVES.		
TOOH AND LD THE WEATHERFORD FISHING ASSEMBLY. NOTE: FISH LEFT IN HOLE 1-6 1/8" PDC BIT, 1- 5" DRILLING MOTOR, 2- NMPC, 3- NMDC'S, 1- HOS, 1- GAP SUB, 1-XO, 1- JT 4" XT-39 HWDP1- 1- SCREW IN SUB 1- X-O SUB. NEW TOP OF FISH @ 6035' (NOTE: FICE SUB 1" 2000# BURST DISK WAS NOT IN PLACE)		
M/U RR 6 1/8" TRICONE BIT AND BIT SUB TIH, BREAK CIRC EVERY 2000'		
CIRCULATE AND CONDITION MUD @ 6034'. LAY DOWN DRILL PIPE.		
4.5" CASING/CEMENT NOTICES; LEFT MSG ON BLM OPERATIONS LINE @ 14:20 HRS, TEXT/CALL MONICA KUEHLING, NMOCD @ 14: 10 HRS.		



Well Operations Summary L48

Well Name: SAN JUAN 27-5 UNIT NP #330 ST1

API: 3003925522

Field: BSN (FTLD COAL)

#3046

State: NEW MEXICO

Permit to Drill (PTD) #:

Sundry #:

Rig/Service: 3

Jobs

Actual Start Date: 9/2/2024

End Date: 9/14/2024

Report Number
11Report Start Date
9/12/2024Report End Date
9/13/2024

Operation

LAY DOWN DRILL PIPE, R/U CASER'S

WAIT ON WEATHERFORD TOOLS, CHANGED FROM MECHANICAL DV STAGE TOOL TO HYDRAULIC SINCE WELL SURVEYS HAD 26 DEG DEVIATION. NEEDED DIFFERENT BAFFLE LANDING SEAT IN FLOAT COLLAR.

RUN 157 JTS 2- 20' CROSSOVER JTS AND & 1-10' PUP JT OF 4 1/2" 11.6# J-55 BTC.

SHOE @ 6033'

FC @5991'

DV TOOL @ 5207',

FILL PIPE AND BREAK CIRC EVERY 1500' IN CASING AND OPEN HOLE, CIRCULATE BU @ 4000,' 5000',6033', @ 170 - 200 GPM, ON BTM 6033' @ 19:55 HRS.

CIRCULATE @ 6033' RIG DOWN CASERS, SPOT IN, RIG UP CEMENTER'S AND HOLD SAFETY MEETING,

PJSM, CEMENT WITH AMERICAN CEMENTING

FIRST OF TWO STAGES

5000 PSI TEST ON LINES, MIX AND PUMP AT 3.5 BPM

30 BBLS 11PPG WEIGHTED SPACER, FOLLOWED BY

35 BBLS, 79 SACKS 11.5 PPG CLASS G CEMENT (2.46 YIELD, 14.03 GAL/SK) FOLLOWED BY DROP FLEX WIPER PLUG, DISPLACE AT 4 BPM W/ 30

BBLS FRESH WATER THEN 63 BBLS SYSTEM MUD = 93 TOTAL BBLS

PLUG DID NOT BUMP AT ALL, CONTINUE PUMPING PAST CALCULATED DISPLACEMENT, HIGHEST PRESSURE GRADUAL INCREASE TO 950 PSI THEN GRADUAL DROP DOWN TO 800 PSI

FULL CIRCULATION FOR FIRST 122 BBLS THEN LOST RETURN'S, SWITCHED OVER TO RIG AND PUMPED ADDITIONAL 130 BBL, REGAINED RETURNS IN PIT, 40 BBLS THEN BYPASS AND CIRCULATE OUT SPACER, 30-35 BBLS CMT AND 20 BBLS WATER TO THE CATCH BIN, SWITCH BACK TO MUD PIT AND CONT. CIRCULATING WITH RIG PUMP SEVERAL BOTTOMS UP. SHUT DOWN PUMP, CLOSED ANNULAR, PUMPED DOWN KILL LINE.

FLOWED UP CASING INDICATING DV TOOL WAS OPENED PREMATURELY. CIRC AND WAIT ON ORDERS

JOHN DURHAM W/ NMOCD ONSITE AS WITNESS

CEMENT

SECOND OF TWO STAGES

PJSM, 5000 PSI TEST ON LINES, MIX AND PUMP AT 4 BPM

30 BBLS 11 PPG WEIGHTED SPACER, FOLLOWED BY

114 BBLS, 261 SACKS 11.5 PPG CLASS G CEMENT (2.46 YIELD, 14.03 GAL/SK) FOLLOWED BY

WIPER PLUG, DISPLACE AT 4 BPM UNTIL CATCH PSI THEN SLOW

TO 3 BBLS PER MINUTE WITH 81 BBLS FRESH WATER

BUMP PLUG ON SCHEDULE - FCP 1212 PSI, PRESSURE UP TO 3206 PSI AND HOLD FOR 5 MINUTES, CLOSE DV TOOL.

FLOATS HELD / 1.0 BBL BACK ON BLEED OFF, FULL CIRCULATION, @ 70BBL IN DISP. PARTIAL CIRC.

PLUG DOWN 9/13/2024 @ 03:30 HRS. 5 BBL GOOD CMT TO SURFACE

NO GOVERNMENT REGULATORY ONSITE AS WITNESS. JOHN DURHAM LEFT. I CALLED HIM AND TOLD HIM WE WERE GOING TO START 2ND STAGE CEMENT. VERBAL OK.

WAIT ON CEMENT, FLUSH STACK AND FLOWLINE, REMOVE FLOW LINE AND BLOWIE LINE. PREP TO NIPPLE DOWN

Report Number
12Report Start Date
9/13/2024Report End Date
9/14/2024

Operation

NIPPLE DOWN SET SLIP'S, 80K ON SLIPS, CUT OFF AND INSTALL NIGHT CAP

RIG DOWN TO MOVE, MOVED LIVING QUARTERS AND APX 20% RIG EQUIP. TO THE JICARILLA A #2 6:00 AM 100% RIGGED DOWN EXCEPT TAKING DERRICK OFF CARRIER. (NOTE: RIG RELEASE 6:00 AM)

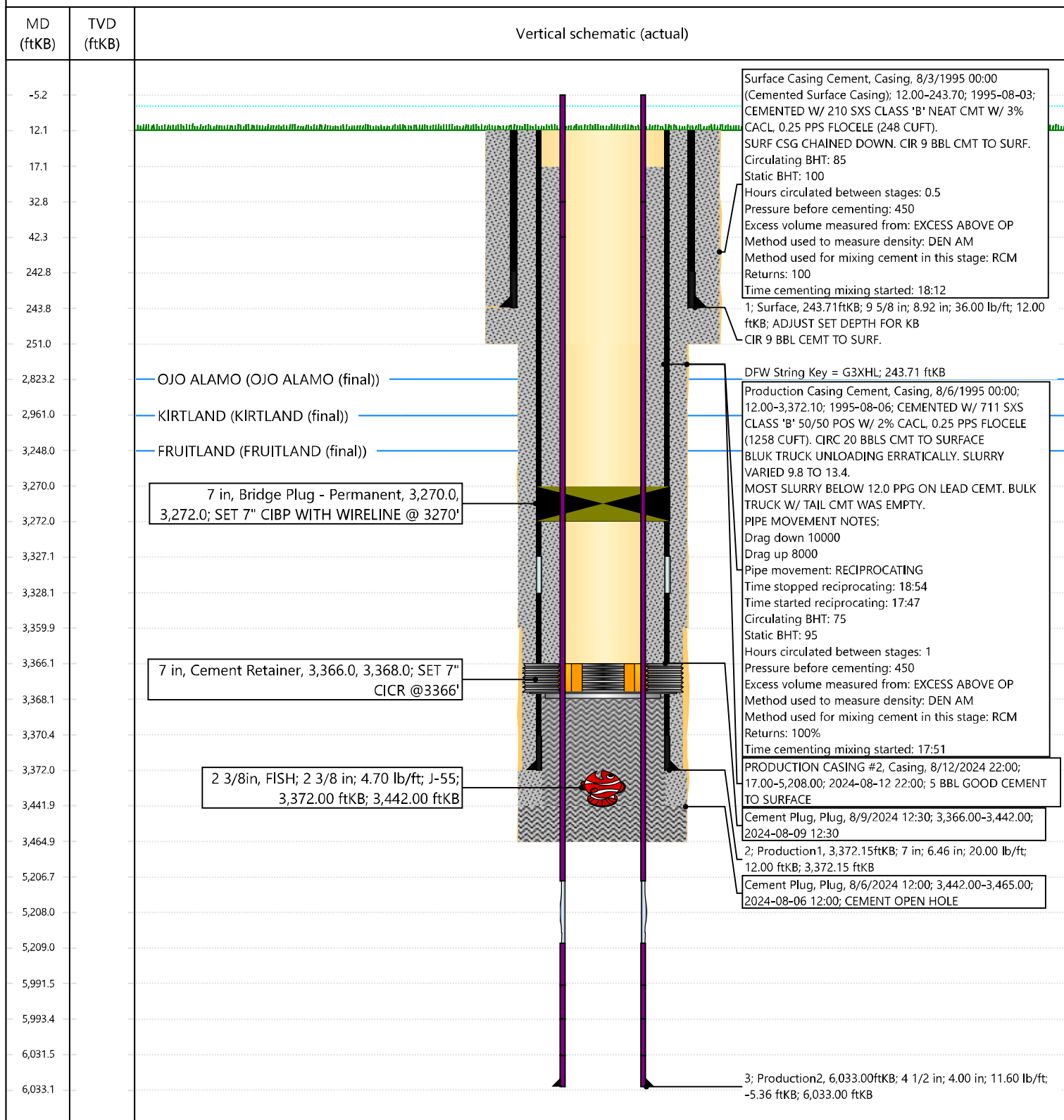


Current Schematic - Version 3

Well Name: SAN JUAN 27-5 UNIT NP #330 ST1

API / UWI 3003925522	Surface Legal Location 005-027N-005W-M	Field Name BSN (FTLD COAL) #3046	Route 1312	State/Province NEW MEXICO	Well Configuration Type VERTICAL
Ground Elevation (ft) 6,666.00	Original KB/RT Elevation (ft) 6,678.00	Tubing Hanger Elevation (ft)	RKB to GL (ft) 12.00	KB-Casing Flange Distance (ft)	KB-Tubing Hanger Distance (ft)
Tubing Strings					
Run Date 8/7/2024 10:30	Set Depth (ftKB) 3,442.00	String Max Nominal OD (in) 2 3/8	String Min Nominal ID (in) 2.00	Weight/Length (lb/ft) 4.70	Original Spud Date 8/2/1995 14:00

Sidetrack 1 [VERTICAL]



District I
1625 N. French Dr., Hobbs, NM 88240
Phone:(575) 393-6161 Fax:(575) 393-0720

District II
811 S. First St., Artesia, NM 88210
Phone:(575) 748-1283 Fax:(575) 748-9720

District III
1000 Rio Brazos Rd., Aztec, NM 87410
Phone:(505) 334-6178 Fax:(505) 334-6170

District IV
1220 S. St Francis Dr., Santa Fe, NM 87505
Phone:(505) 476-3470 Fax:(505) 476-3462

State of New Mexico
Energy, Minerals and Natural Resources
Oil Conservation Division
1220 S. St Francis Dr.
Santa Fe, NM 87505

CONDITIONS

Action 400000

CONDITIONS

Operator: HILCORP ENERGY COMPANY 1111 Travis Street Houston, TX 77002	OGRID: 372171
	Action Number: 400000
	Action Type: [C-103] Sub. Drilling (C-103N)

CONDITIONS

Created By	Condition	Condition Date
keith.dziokonski	Report pressure test on next sundry. Include test pressure and duration.	11/7/2024