

Well Name: JAMES RANCH UNIT	Well Location: T23S / R31E / SEC 6 / NWSW / 32.3322526 / -103.8245151	County or Parish/State: EDDY / NM
Well Number: 4	Type of Well: CONVENTIONAL GAS WELL	Allottee or Tribe Name:
Lease Number: NMNM04473	Unit or CA Name: JAMES RANCH-ATOKA, JAMES RANCH-MORROW	Unit or CA Number: NMNM70965A, NMNM70965B
US Well Number: 3001520803	Operator: XTO PERMIAN OPERATING LLC	

Subsequent Report

Sundry ID: 2836013

Type of Submission: Subsequent Report

Date Sundry Submitted: 02/10/2025

Date Operation Actually Began: 09/25/2024

Type of Action: Plug and Abandonment

Time Sundry Submitted: 07:19

Actual Procedure: XTO Permian Operating LLC., has P&A'd the above mentioned well per the attached P&A Summary Report & WBD. CBL has also been submitted.

SR Attachments

Actual Procedure

- JAMES\_RANCH\_UNIT\_004\_3001520803\_241019\_CCLGRRRCBL\_20250210071757.pdf
- James\_Ranch\_Unit\_004\_Sbsq\_P\_A\_Summary\_Rpt\_\_\_WBD\_20250210071432.pdf

Well Number: 4

Type of Well: CONVENTIONAL GAS WELL

Allottee or Tribe Name:

Lease Number: NMNM04473

Unit or CA Name: JAMES RANCH-ATOKA, JAMES RANCH-MORROW

Unit or CA Number: NMNM70965A, NMNM70965B

US Well Number: 3001520803

Operator: XTO PERMIAN OPERATING LLC

Operator

I certify that the foregoing is true and correct. Title 18 U.S.C. Section 1001 and Title 43 U.S.C. Section 1212, make it a crime for any person knowingly and willfully to make to any department or agency of the United States any false, fictitious or fraudulent statements or representations as to any matter within its jurisdiction. Electronic submission of Sundry Notices through this system satisfies regulations requiring a

Operator Electronic Signature: SHERRY MORROW

Signed on: FEB 10, 2025 06:50 AM

Name: XTO PERMIAN OPERATING LLC

Title: Regulatory Analyst

Street Address: 6401 HOLIDAY HILL ROAD BLDG 5

City: MIDLAND

State: TX

Phone: (432) 218-3671

Email address: SHERRY.MORROW@EXXONMOBIL.COM

Field

Representative Name:

Street Address:

City:

State:

Zip:

Phone:

Email address:

BLM Point of Contact

BLM POC Name: JAMES A AMOS

BLM POC Title: Acting Assistant Field Manager

BLM POC Phone: 5752345927

BLM POC Email Address: jamos@blm.gov

Disposition: Accepted

Disposition Date: 02/12/2025

Signature: James A Amos

James Ranch Unit 004  
API 30-015-20803  
P&A Summary Report

9/25/24: MIRU Rig. Hot oil TBG/CSG. Flush CSG. Unset pump. Well Shut in and Secure.

9/26/24: Bled down csg/TBG Pump 90 bbl's down csg. Repair and inspect rod pce. Work stuck rods. PU wt is 24k PU to 34k start rotating to the left. Work from 31k to 35k. Rods backed off. 9k string wt. LD 132 7/8 rods. ND B1 adapter. PU on B1 adapter. We only have 22k. Pipe is parted. Appears to be at 3,381'. We recovered 3,320' of rods. Well shut in and secure.

9/27/24: Pump 90 bbl's down csg. While change out B1 adapter and installing recompletion spool. Remove B1 adapter. PU on tbg. WT is 22k. Install 4' sub. Install and NU recompletion spool. LND/ Lock in HGR. NU B1 adapter on top of completion spool. Prep 1" HD rods. Install 7/8 by 1" rod coupling. TIH w/ 1" HD rods. TIH 105' past rods recovered to 3,425. LD 137 rods. SDFWE.

9/30/24: Pump 100 bbls TPW down casing. Unload 420 jts of workstring to the side. NU PT BOP REAR door seals were leaking WO new seals. MIRU LD machine / pipe racks LD tbg 113 jts bad 4.35' stump. SWI SDFN.

10/1/24: MIRU tally tbg 75 jts. RIH w/tbg impression block 6.562' tally tbg 31 jts total 125' Tag with 113' @ TOF 3587'. POOH w/tbg and Impression blk. Make up and rig up Oversocket and dummy test oversocket rod would bottom out on tob sub WO extension. SWI SDFD.

10/2/24: Rig up and make up 6 3/4' oversocket. RIH stacking out on recompletion spool. Recompletion spool measures 6 3/4' sent guide to get turned down to 6/625'. RiH with 6.625' guide on oversocket. MIRU swivel and turned on oversocket work up down, rig down swivel. POOH with tbg and oversocket LD Oversocket. SWI SDFD.

10/3/24: RIH w/tbg and BHA MIRU PS. Dress TOF and work pipe and unset TAC. LD 12 jts moving pipe then stand back dragging ooh 38 stands. SWI SDFD.

10/4/24: POOH with WS and fish. Break down fish and tools change out equip and pull on rods. LD 3 K of rods total 167- 35 (7/8) and 34 (3/4). POOH LD tbg 55 jts till rods. LD 1.5 k 23 3/4 rods were backed off. Change out Equip to tbg LD 18 JTS LD 2 k 65 3/4 total of (122). SWI SDFWE.

10/7/24: Pooh LD 52 jts 2 7/8 EUE pitted and corroded. Changed out equip and LD 3/4 rods (84). Changed out equip to tbg and LD TBG (67 jts ) total 304. POOH w/rods LD 2 k (79) 3/4 . Change out equip and LD tbg (52) jts total of 356 2 7/8 EUE. SWI SDFN.

10/8/24: Pumped 120 Bbls of produced water down Csg. Well on a vacuum. Continued TOH w/ Tbg & Rods stripping out. Continued TOH w/ Tbg & rods. Stripped out a total of 58 jnts 2-7/8 EUE, TAC, 2 jnts 2-7/8 SS Tbg and (65) 3/4 rods. Found fluid in the Tbg. SWI SDFN.

10/9/24: Continued TOH LD w/ remaining Tbg & Rods. MIRU WLU. RIH w/ 4.50" GRJB. Tagged @ 6480' FS. POOH w/ 4.5" GR. RBIH w/ 3-1/8" sinker bar and CCL. Tag again same spot @ 5480'. POOH. RDMO WLU. Spotted in 90 jnts of 2-7/8 PH6 Tbg and tally. SWION. SDFN.

10/10/24: Made up 6" OD IB. TIH 100 jnts 2-7/8 PH6 tbg from derrick. PU TIH 110 jnts 2-7/8 PH6 from pipe racks. EOT 6631' and never tagged or sat down on anything. Call was made to TOH. TOH std back 210 jnts 2-7/8 PH6 tbg and LD IB. SDFN.

10/11/24: Made up BHA (6.75" cutlip guide, 4-11/16 bow dressed w/1-5/8 basket grapple, top bushing, 3.75 LBS). TIH 261 jnts 2-7/8 PH6. EOT @ 8244'. Never sat down on fish. SDFWE.

10/14/24: TIH w/361 jnts 2-7/8 PH6 total & BHA. Tagged @ 11,390' FS. Set 10k lbs. Pulled and did not see any movement on weight indicator. Set back again. TOH w/ BHA and Tbg. Stood back 360 jnts 2-7/8 PH6 Tbg. SDFN.

10/15/24: LD 1 jnt 2-7/8 PH6, (4) 7/8" rods & BHA. MU & TIH w/ 4-1/2" tricone bit, Csg scraper, x-over, 3-3/4" full open LBS and 369 jnts @ 11,667' FS. Got into liner top @ 11,480' without problems. TOH w/4 stands above liner top. EOT @ 11,413'. Secured well. SDFN.

10/16/24: TIH w/ 68 jnts 2-7/8" PH6 P110 Tbg. Tag solid w/ 429 jnts @ 13,538' FS. TOH & LD 20 jnts 2-7/8 PH6 P110. Stood back 333 jnts (Pulled 353 jnts total). Leave 76 jnts in the hole. EOT @ ~2400' FS. SDFN. Secured well.

10/17/24: Run in hole set CIBP @ 13538'. Dump bail 5 sks cmt, 45' on top of CIBP. Rig down wireline. SDFN. Secured well.

10/18/24: Run in hole set CIBP @ 12,884' Dump bail 5 sks cmt 45'. Load well w/ 280 Bbls of TPW. Rig down wireline. SDFN. Secured well.

10/19/24: Load well w/ 5 Bbls TPW. PT Csg (CIBP & Cmt) @ 500psi, held. MIRU WLU. Run CBL. RDMO WLU. SDFN. Secured well.

10/20/24: TIH w/ 244 jnts 2-7/8" PH6 P110 WS Tbg open ended. TOH w/ 200 jnts laying down. Leave 44 jnts in the hole. EOT @ 1390'. Secure well. SDFN.

10/21/24: TIH w/ 160 jnts 2-7/8" PH6 P110 WS Tbg open ended. TOH w/ 204 jnts laying down. ND BOP. NU WH. Installed B1 adaptor w/ XO & 5k ball valve. Load well with 26 Bbls of TPW. RDMO LDM & RU. Secure well. SDFN.

11/16/24: Spot all equipment and RU.

11/17/24: ND B1 adapter. FT NU PT BOP. PT blinds and rams to 3500 psi on high side and 300 psi on low side for 10 minutes each PT good. Rack tally pu and TIH 232 j2-7/8 L80 tbg. EOT @ 7591'. SDFN.

11/19/24: Load, tally, PU and TIH 162 jnts 2-7/8 L80 tbg and TTOC @ 12,849'. SDFN.

11/20/24: Circulate 566 bbls SGM till good returns at pit. Spot 175 sks Class H CMT (FW mix 18 bbls, Slurry volume 33.03 bbls, CTOC 11,360'). Displaced w/65.5 bbls 10# BW. TOH 80 jnts 2-7/8 L80 tbg. EOT @ 10,236'. Reverse circulated 80 bbls 10# BW. SDFN.

11/22/24: TIH 42 jnts 2-7/8 L80 tbg and TTOC @ 11460'. TOH LD 42 jnts 2-7/8 L80 tbg. TIH 40 jnts 2-7/8 L80 tbg. EOT @ 11442'. Circ 65 bbls 10# BW to condition hole. Swapped to CMT and spotted 185 sks Class H CMT (FW water mix 29 bbls, Slurry vol 34.92 bbls, FOF 760', CTOC 10,700'). Displaced w/62 bbls 10# BW. TOH std back 78 jnts 2-7/8 L80 tbg. Rev circ 65 bbls 10# BW WOC. Dug out cellar to attempt to

find surface csg valve. TIH 53 jnts and TTOC @ 10,692'. TOH 6 jnts 2-7/8 L80 tbg. EOT @ 10,525'. Pumped 30 bbls down tbg to ensure tbg was not plugged. Got good circ to pit. SDFN.

11/25/24: TOH LD 81 jnts 2-7/8 L80 tbg. EOT @7894'. Broke circulation w/15bbls 10# BW. Spot 100 sks Class H CMT (FW Mix 10.23 bbls, Slurry Vol 18.87 bbls, FOF 411', CTOC 7489') Displaced w/43.25 bbls 10# BW TOH std back 32 jnts 2-7/8 L80 tbg. LD 28 jnts 2-7/8 L80 tbg. Total in hole 182 jnts 2-7/8 L80 tbg. EOT @ 5937'. Reverse circulate 35 bbls 10# BW. RD tongs and work floor. Secure well. SDFN.

11/26/24: TIH 43jnts 2-7/8 L80 tbg and TTOC @7498'. Total in hole 230 jnts 2-7/8 L80 tbg. TOH LD 28 jnts 2-7/8 L80 tbg. Total in hole 202 jnts 2-7/8 L80 tbg. EOT @ 6590'. Break circ w/22 bbls 10# BW. Spotted 155 sks Class H CMT (FW mix 16 bbls, Slurry vol 29.26 bbls, FOF 637', CTOC 5940') Displaced w/34.25 bbls. TOH std back 48 jnts 2-7/8 L80 tbg, LD 12 jnts 2-7/8 L80 tbg. Rev circ 30 bbls 10# BW. WOC. TIH 42 jnts 2-7/8 L80 tbg and TTOC @ 5998'. Total in hole 184 jnts 2-7/8 L80 tbg. TOH 6 jnts. EOT @5811'. SDFN.

11/27/24: TOH LD 30 jnts 2-7/8 L80 tbg. Total in hole 151 jnts 2-7/8 L80 tbg. EOT @ 4922'. Broke circulation w/12 bbls 10# BW. Spotted 306 sks Class C CMT (FW mix 46 bbls, Slurry vol 71.9 bbls, FOF 1562', CTOC 3360'). Displaced w/19.5 bbls. TOH std back 46 jnts 2-7/8 L80 tbg LD 1 jnts. Rev circ 40 bbls 10# BW to clear returns at pit. TOH std back 12 more jnts. WOC.

12/2/24: TIH 12 jnts 2-7/8 L80 tbg (total 104 jnts) TTOC @ 3392'. TOH std 12 jnts 2-7/8 L80 tbg. LD 92 jnts 2-7/8 L80 tbg. 0 left in hole. MIRU RIH TTOC w/WL @ 3402'. Pulled up to 3360'. Put 400 psi on csg. Perfed. Lost psi and blew glove off of the intermediate as soon as we perfed. RDMO WLU. TIH 38 jnts 2-7/8 L80 tbg. and set pkr @1239'. Circulate 238 bbls to dye at pit. 1.5 bpm.

12/3/24: Break circulation w/10 bbls 10# BW. Swapped to CMT and sqz 700 sks Class C CMT(FW mix 105 bbls, Slurry Vol 164.56 bbls, CTOC 1500'). Displaced w/18.5 bbls. Caught 385 psi w/2bbls of displacement to go. Finished displacement. WOC. TOH std back 38 jnts 2-7/8 L80 tbg and LD pkr. TIH 45 jnts and 21' of jnt 46 and TTOC @1487'. TOH LD 25 jnts 2-7/8 L80 tbg. 21 jnt left in hole.

12/4/24: TOH LD 21 jnts 2-7/8 L80 tbg. 0 tbg left in hole. MIRU WLU. RIH and perf @1445'. Had 600 psi on 7 5/8 csg. Lost psi and blew glove off when we perfed. POOH RU pump and EIR. 15 bbls @ 2.5 bpm. No psi and got immediate returns to pit. RDMO WLU. TIH 24 jnts 2-7/8 L80 tbg from derrick. TOH LD 24 jnts 2-7/8 L80 tbg. RD work floor. RD LD machine and pipe racks ND BOP. NU B1 Flange. Sqz 620 sks Class C CMT (FW Mix 93 bbls, Slurry Vol 145 sks) to good returns at surface. RD PU and all aux equipment.

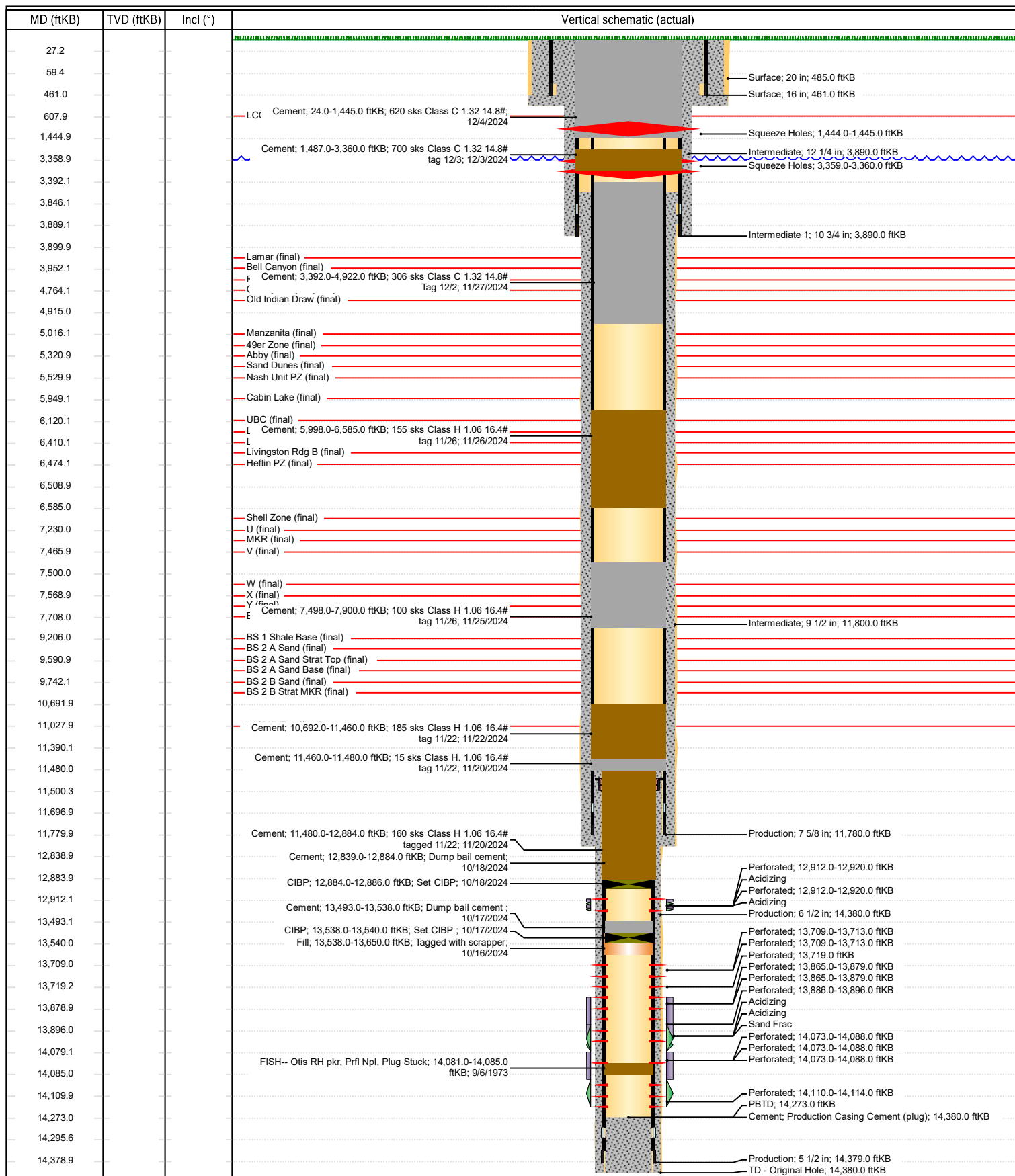
2/4/25: Cut off Wellhead and set DHM.



# Schematic - Vertical with Perfs

Well Name: James Ranch Unit 004

API/UWI 3001520803	SAP Cost Center ID 1135583001	Permit Number	State/Province New Mexico	County Eddy
Surface Location T23S-R31E-S06	Spud Date 5/21/1973 08:20	Original KB Elevation (ft) 3,320.00	Ground Elevation (ft) 3,296.00	KB-Ground Distance (ft) 24.00



Sante Fe Main Office  
Phone: (505) 476-3441

General Information  
Phone: (505) 629-6116

Online Phone Directory  
<https://www.emnrd.nm.gov/oed/contact-us>

State of New Mexico  
Energy, Minerals and Natural Resources  
Oil Conservation Division  
1220 S. St Francis Dr.  
Santa Fe, NM 87505

CONDITIONS

Action 431222

CONDITIONS

Operator: XTO PERMIAN OPERATING LLC. 6401 HOLIDAY HILL ROAD MIDLAND, TX 79707	OGRID: 373075
	Action Number: 431222
	Action Type: [C-103] Sub. Plugging (C-103P)

CONDITIONS

Created By	Condition	Condition Date
gcordero	None	3/25/2025