

Well Name: ROSA UNIT	Well Location: T31N / R6W / SEC 9 / NENW / 36.918515 / -107.470797	County or Parish/State: SAN JUAN / NM
Well Number: 554H	Type of Well: CONVENTIONAL GAS WELL	Allottee or Tribe Name:
Lease Number: NMSF078765	Unit or CA Name: ROSA UNIT	Unit or CA Number: NMNM78407E
US Well Number:	Operator: LOGOS OPERATING LLC	

Notice of Intent

Sundry ID: 2841159

Type of Submission: Notice of Intent

Type of Action: Other

Date Sundry Submitted: 03/11/2025

Time Sundry Submitted: 08:55

Date proposed operation will begin: 04/01/2025

Procedure Description: LOGOS Operating request a change in plans for the following (based on KB elevation): New surface-hole location 975' FNL & 1895' FWL New bottom-hole location 719' FNL & 1309' FWL New TD @ 16,666' (MD) 7,062' (TVD). Geology tops have been updated per changes. New KOP @ 6,384' MD 6379' TVD New Landing point @ 7,379' MD 7,014' TVD New 20" Conductor casing @ 320' MD New 13.375" Surface casing @ 3,465' MD New 9.625" Intermediate casing @ 6,332MD New 5.5" Production casing @ 16,666' MD All cementing bbls and sacks have been update per casing depth changes. Attached: New C102, Operation and Directional Drill plans.

Surface Disturbance

Is any additional surface disturbance proposed?: No

NOI Attachments

Procedure Description

Rosa_Unit_554H_Revised_Plat_03.03.2025_signed_20250313085052.pdf

Logos__Rosa_Unit_554H_Plan_Data_Prelim_3_20250311085534.pdf

Rosa_Unit_554H_Operations_Plan_4_string_Prelim3_03_07_2025_20250311085510.pdf

Well Name: ROSA UNIT

Well Location: T31N / R6W / SEC 9 / NENW / 36.918515 / -107.470797

County or Parish/State: SAN JUAN / NM

Well Number: 554H

Type of Well: CONVENTIONAL GAS WELL

Allottee or Tribe Name:

Lease Number: NMSF078765

Unit or CA Name: ROSA UNIT

Unit or CA Number: NMNM78407E

US Well Number:

Operator: LOGOS OPERATING LLC

Operator

I certify that the foregoing is true and correct. Title 18 U.S.C. Section 1001 and Title 43 U.S.C. Section 1212, make it a crime for any person knowingly and willfully to make to any department or agency of the United States any false, fictitious or fraudulent statements or representations as to any matter within its jurisdiction. Electronic submission of Sundry Notices through this system satisfies regulations requiring a

Operator Electronic Signature: ETTA TRUJILLO

Signed on: MAR 13, 2025 08:52 AM

Name: LOGOS OPERATING LLC

Title: Regulatory Specialist

Street Address: 2010 AFTON PLACE

City: Farmington State: NM

Phone: (505) 324-4154

Email address: ETRUJILLO@LOGOSRESOURCESLLC.COM

Field

Representative Name:

Street Address:

City: State: Zip:

Phone:

Email address:

BLM Point of Contact

BLM POC Name: KENNETH G RENNICK

BLM POC Title: Petroleum Engineer

BLM POC Phone: 5055647742

BLM POC Email Address: krennick@blm.gov

Disposition: Approved

Disposition Date: 03/13/2025

Signature: Kenneth Rennick

Logos Operating LLC

Rio Arriba, NM (NAD83)

Rosa Unit 5

Rosa Unit 554H

OH

Plan: Prelim 3

Standard Planning Report

05 March, 2025

SDT Planning Report

Database:	EDM 5000 Multi User Db	Local Co-ordinate Reference:	Well Rosa Unit 554H
Company:	Logos Operating LLC	TVD Reference:	6433.5+25 @ 6458.50usft (H&P 257)
Project:	Rio Arriba, NM (NAD83)	MD Reference:	6433.5+25 @ 6458.50usft (H&P 257)
Site:	Rosa Unit 5	North Reference:	True
Well:	Rosa Unit 554H	Survey Calculation Method:	Minimum Curvature
Wellbore:	OH		
Design:	Prelim 3		

Project	Rio Arriba, NM (NAD83)		
Map System:	US State Plane 1983	System Datum:	Mean Sea Level
Geo Datum:	North American Datum 1983		
Map Zone:	New Mexico Western Zone		

Site	Rosa Unit 5				
Site Position:		Northing:	2,153,894.20 usft	Latitude:	36.918586
From:	Lat/Long	Easting:	2,829,074.91 usft	Longitude:	-107.470774
Position Uncertainty:	0.00 usft	Slot Radius:	13-3/16 "		

Well	Rosa Unit 554H					
Well Position	+N/-S	0.00 usft	Northing:	2,153,914.28 usft	Latitude:	36.918641
	+E/-W	0.00 usft	Easting:	2,829,089.45 usft	Longitude:	-107.470724
Position Uncertainty		0.00 usft	Wellhead Elevation:	usft	Ground Level:	6,433.50 usft
Grid Convergence:	0.22 °					

Wellbore	OH				
Magnetics	Model Name	Sample Date	Declination (°)	Dip Angle (°)	Field Strength (nT)
	HRGM	1/31/2025	8.44	63.26	49,264.70787655

Design	Prelim 3			
Audit Notes:				
Version:	Phase:	PLAN	Tie On Depth:	0.00
Vertical Section:	Depth From (TVD) (usft)	+N/-S (usft)	+E/-W (usft)	Direction (°)
	0.00	0.00	0.00	89.76

Plan Survey Tool Program	Date	3/5/2025			
Depth From (usft)	Depth To (usft)	Survey (Wellbore)	Tool Name	Remarks	
1	0.00	16,665.95 Prelim 3 (OH)	MWD+HRGM+MS	MWD + HRGM + Multi-Station	

Plan Sections										
Measured Depth (usft)	Inclination (°)	Azimuth (°)	Vertical Depth (usft)	+N/-S (usft)	+E/-W (usft)	Dogleg Rate (°/100usft)	Build Rate (°/100usft)	Turn Rate (°/100usft)	TFO (°)	Target
0.00	0.00	0.00	0.00	0.00	0.00	0.00	0.00	0.00	0.00	
500.00	0.00	0.00	500.00	0.00	0.00	0.00	0.00	0.00	0.00	
610.43	2.21	3.27	610.40	2.12	0.12	2.00	2.00	0.00	3.27	
6,383.67	2.21	3.27	6,379.36	224.25	12.81	0.00	0.00	0.00	0.00	
7,378.88	89.70	89.76	7,014.00	251.21	646.03	9.00	8.79	8.69	86.50	RU 554H POE
16,665.95	89.70	89.76	7,062.00	290.26	9,932.89	0.00	0.00	0.00	0.00	RU 554H PBHL

SDT Planning Report

Database:	EDM 5000 Multi User Db	Local Co-ordinate Reference:	Well Rosa Unit 554H
Company:	Logos Operating LLC	TVD Reference:	6433.5+25 @ 6458.50usft (H&P 257)
Project:	Rio Arriba, NM (NAD83)	MD Reference:	6433.5+25 @ 6458.50usft (H&P 257)
Site:	Rosa Unit 5	North Reference:	True
Well:	Rosa Unit 554H	Survey Calculation Method:	Minimum Curvature
Wellbore:	OH		
Design:	Prelim 3		

Planned Survey									
Measured Depth (usft)	Inclination (°)	Azimuth (°)	Vertical Depth (usft)	+N-S (usft)	+E-W (usft)	Vertical Section (usft)	Dogleg Rate (°/100usft)	Build Rate (°/100usft)	Turn Rate (°/100usft)
0.00	0.00	0.00	0.00	0.00	0.00	0.00	0.00	0.00	0.00
100.00	0.00	0.00	100.00	0.00	0.00	0.00	0.00	0.00	0.00
200.00	0.00	0.00	200.00	0.00	0.00	0.00	0.00	0.00	0.00
300.00	0.00	0.00	300.00	0.00	0.00	0.00	0.00	0.00	0.00
400.00	0.00	0.00	400.00	0.00	0.00	0.00	0.00	0.00	0.00
500.00	0.00	0.00	500.00	0.00	0.00	0.00	0.00	0.00	0.00
Start Build 2.00									
600.00	2.00	3.27	599.98	1.74	0.10	0.11	2.00	2.00	0.00
610.43	2.21	3.27	610.40	2.12	0.12	0.13	2.00	2.00	0.00
Start 5773.24 hold at 610.43 MD									
700.00	2.21	3.27	699.91	5.57	0.32	0.34	0.00	0.00	0.00
800.00	2.21	3.27	799.83	9.42	0.54	0.58	0.00	0.00	0.00
900.00	2.21	3.27	899.76	13.27	0.76	0.81	0.00	0.00	0.00
1,000.00	2.21	3.27	999.68	17.11	0.98	1.05	0.00	0.00	0.00
1,100.00	2.21	3.27	1,099.61	20.96	1.20	1.28	0.00	0.00	0.00
1,200.00	2.21	3.27	1,199.53	24.81	1.42	1.52	0.00	0.00	0.00
1,300.00	2.21	3.27	1,299.46	28.66	1.64	1.76	0.00	0.00	0.00
1,400.00	2.21	3.27	1,399.39	32.50	1.86	1.99	0.00	0.00	0.00
1,500.00	2.21	3.27	1,499.31	36.35	2.08	2.23	0.00	0.00	0.00
1,600.00	2.21	3.27	1,599.24	40.20	2.30	2.46	0.00	0.00	0.00
1,700.00	2.21	3.27	1,699.16	44.05	2.52	2.70	0.00	0.00	0.00
1,800.00	2.21	3.27	1,799.09	47.89	2.73	2.94	0.00	0.00	0.00
1,900.00	2.21	3.27	1,899.01	51.74	2.95	3.17	0.00	0.00	0.00
2,000.00	2.21	3.27	1,998.94	55.59	3.17	3.41	0.00	0.00	0.00
2,100.00	2.21	3.27	2,098.87	59.44	3.39	3.64	0.00	0.00	0.00
2,200.00	2.21	3.27	2,198.79	63.28	3.61	3.88	0.00	0.00	0.00
2,300.00	2.21	3.27	2,298.72	67.13	3.83	4.11	0.00	0.00	0.00
2,400.00	2.21	3.27	2,398.64	70.98	4.05	4.35	0.00	0.00	0.00
2,407.36	2.21	3.27	2,406.00	71.26	4.07	4.37	0.00	0.00	0.00
Ojo Alamo									
2,500.00	2.21	3.27	2,498.57	74.83	4.27	4.59	0.00	0.00	0.00
2,524.45	2.21	3.27	2,523.00	75.77	4.33	4.64	0.00	0.00	0.00
Kirtland									
2,600.00	2.21	3.27	2,598.49	78.67	4.49	4.82	0.00	0.00	0.00
2,700.00	2.21	3.27	2,698.42	82.52	4.71	5.06	0.00	0.00	0.00
2,800.00	2.21	3.27	2,798.35	86.37	4.93	5.29	0.00	0.00	0.00
2,900.00	2.21	3.27	2,898.27	90.22	5.15	5.53	0.00	0.00	0.00
2,927.75	2.21	3.27	2,926.00	91.28	5.21	5.59	0.00	0.00	0.00
Fruitland									
3,000.00	2.21	3.27	2,998.20	94.06	5.37	5.77	0.00	0.00	0.00
3,040.83	2.21	3.27	3,039.00	95.63	5.46	5.86	0.00	0.00	0.00
T/Coals									
3,100.00	2.21	3.27	3,098.12	97.91	5.59	6.00	0.00	0.00	0.00
3,200.00	2.21	3.27	3,198.05	101.76	5.81	6.24	0.00	0.00	0.00
3,237.98	2.21	3.27	3,236.00	103.22	5.89	6.33	0.00	0.00	0.00
B/Coals									
3,300.00	2.21	3.27	3,297.97	105.61	6.03	6.47	0.00	0.00	0.00
3,400.00	2.21	3.27	3,397.90	109.45	6.25	6.71	0.00	0.00	0.00
3,415.11	2.21	3.27	3,413.00	110.03	6.28	6.74	0.00	0.00	0.00
Pictured Cliffs									
3,500.00	2.21	3.27	3,497.83	113.30	6.47	6.94	0.00	0.00	0.00
3,534.20	2.21	3.27	3,532.00	114.62	6.54	7.02	0.00	0.00	0.00
Lewis									

SDT
Planning Report

Database:	EDM 5000 Multi User Db	Local Co-ordinate Reference:	Well Rosa Unit 554H
Company:	Logos Operating LLC	TVD Reference:	6433.5+25 @ 6458.50usft (H&P 257)
Project:	Rio Arriba, NM (NAD83)	MD Reference:	6433.5+25 @ 6458.50usft (H&P 257)
Site:	Rosa Unit 5	North Reference:	True
Well:	Rosa Unit 554H	Survey Calculation Method:	Minimum Curvature
Wellbore:	OH		
Design:	Prelim 3		

Planned Survey										
Measured Depth (usft)	Inclination (°)	Azimuth (°)	Vertical Depth (usft)	+N/-S (usft)	+E/-W (usft)	Vertical Section (usft)	Dogleg Rate (°/100usft)	Build Rate (°/100usft)	Turn Rate (°/100usft)	
3,600.00	2.21	3.27	3,597.75	117.15	6.69	7.18	0.00	0.00	0.00	
3,700.00	2.21	3.27	3,697.68	120.99	6.91	7.42	0.00	0.00	0.00	
3,800.00	2.21	3.27	3,797.60	124.84	7.13	7.65	0.00	0.00	0.00	
3,900.00	2.21	3.27	3,897.53	128.69	7.35	7.89	0.00	0.00	0.00	
4,000.00	2.21	3.27	3,997.45	132.54	7.57	8.12	0.00	0.00	0.00	
4,100.00	2.21	3.27	4,097.38	136.38	7.79	8.36	0.00	0.00	0.00	
4,200.00	2.21	3.27	4,197.31	140.23	8.01	8.59	0.00	0.00	0.00	
4,300.00	2.21	3.27	4,297.23	144.08	8.23	8.83	0.00	0.00	0.00	
4,400.00	2.21	3.27	4,397.16	147.93	8.45	9.07	0.00	0.00	0.00	
4,500.00	2.21	3.27	4,497.08	151.77	8.67	9.30	0.00	0.00	0.00	
4,600.00	2.21	3.27	4,597.01	155.62	8.89	9.54	0.00	0.00	0.00	
4,667.04	2.21	3.27	4,664.00	158.20	9.03	9.70	0.00	0.00	0.00	
Chacra										
4,700.00	2.21	3.27	4,696.93	159.47	9.11	9.77	0.00	0.00	0.00	
4,800.00	2.21	3.27	4,796.86	163.32	9.33	10.01	0.00	0.00	0.00	
4,900.00	2.21	3.27	4,896.79	167.16	9.55	10.25	0.00	0.00	0.00	
5,000.00	2.21	3.27	4,996.71	171.01	9.77	10.48	0.00	0.00	0.00	
5,100.00	2.21	3.27	5,096.64	174.86	9.98	10.72	0.00	0.00	0.00	
5,116.37	2.21	3.27	5,113.00	175.49	10.02	10.76	0.00	0.00	0.00	
U/Cliff House										
5,200.00	2.21	3.27	5,196.56	178.71	10.20	10.95	0.00	0.00	0.00	
5,300.00	2.21	3.27	5,296.49	182.55	10.42	11.19	0.00	0.00	0.00	
5,400.00	2.21	3.27	5,396.41	186.40	10.64	11.42	0.00	0.00	0.00	
5,444.62	2.21	3.27	5,441.00	188.12	10.74	11.53	0.00	0.00	0.00	
Cliff House										
5,489.65	2.21	3.27	5,486.00	189.85	10.84	11.64	0.00	0.00	0.00	
Menefee										
5,500.00	2.21	3.27	5,496.34	190.25	10.86	11.66	0.00	0.00	0.00	
5,600.00	2.21	3.27	5,596.27	194.10	11.08	11.90	0.00	0.00	0.00	
5,700.00	2.21	3.27	5,696.19	197.94	11.30	12.13	0.00	0.00	0.00	
5,709.82	2.21	3.27	5,706.00	198.32	11.32	12.16	0.00	0.00	0.00	
Point Lookout										
5,800.00	2.21	3.27	5,796.12	201.79	11.52	12.37	0.00	0.00	0.00	
5,900.00	2.21	3.27	5,896.04	205.64	11.74	12.60	0.00	0.00	0.00	
6,000.00	2.21	3.27	5,995.97	209.49	11.96	12.84	0.00	0.00	0.00	
6,100.00	2.21	3.27	6,095.89	213.33	12.18	13.08	0.00	0.00	0.00	
6,200.00	2.21	3.27	6,195.82	217.18	12.40	13.31	0.00	0.00	0.00	
6,222.20	2.21	3.27	6,218.00	218.04	12.45	13.36	0.00	0.00	0.00	
Mancos										
6,300.00	2.21	3.27	6,295.75	221.03	12.62	13.55	0.00	0.00	0.00	
6,383.67	2.21	3.27	6,379.36	224.25	12.81	13.74	0.00	0.00	0.00	
Start DLS 9.00 TFO 86.50										
6,400.00	2.73	35.83	6,395.67	224.88	13.05	13.99	9.00	3.17	199.41	
6,450.00	6.49	69.99	6,445.51	226.81	16.40	17.35	9.00	7.53	68.32	
6,500.00	10.83	78.16	6,494.93	228.74	23.66	24.62	9.00	8.68	16.34	
6,550.00	15.26	81.66	6,543.63	230.66	34.77	35.74	9.00	8.86	7.00	
6,600.00	19.72	83.61	6,591.30	232.55	49.67	50.65	9.00	8.92	3.89	
6,650.00	24.20	84.86	6,637.66	234.41	68.27	69.26	9.00	8.95	2.50	
6,700.00	28.68	85.74	6,682.42	236.23	90.46	91.45	9.00	8.97	1.76	
6,750.00	33.17	86.39	6,725.30	237.98	116.09	117.08	9.00	8.97	1.32	
6,800.00	37.66	86.91	6,766.04	239.66	145.00	146.01	9.00	8.98	1.03	
6,850.00	42.15	87.33	6,804.39	241.27	177.03	178.04	9.00	8.98	0.84	
6,876.98	44.58	87.53	6,824.00	242.10	195.54	196.55	9.00	8.99	0.73	

SDT Planning Report

Database:	EDM 5000 Multi User Db	Local Co-ordinate Reference:	Well Rosa Unit 554H
Company:	Logos Operating LLC	TVD Reference:	6433.5+25 @ 6458.50usft (H&P 257)
Project:	Rio Arriba, NM (NAD83)	MD Reference:	6433.5+25 @ 6458.50usft (H&P 257)
Site:	Rosa Unit 5	North Reference:	True
Well:	Rosa Unit 554H	Survey Calculation Method:	Minimum Curvature
Wellbore:	OH		
Design:	Prelim 3		

Planned Survey									
Measured Depth (usft)	Inclination (°)	Azimuth (°)	Vertical Depth (usft)	+N/-S (usft)	+E/-W (usft)	Vertical Section (usft)	Dogleg Rate (°/100usft)	Build Rate (°/100usft)	Turn Rate (°/100usft)
Black Top									
6,900.00	46.64	87.69	6,840.10	242.78	211.97	212.99	9.00	8.99	0.68
6,950.00	51.14	87.99	6,872.97	244.20	249.61	250.63	9.00	8.99	0.61
7,000.00	55.63	88.26	6,902.78	245.51	289.71	290.74	9.00	8.99	0.54
7,050.00	60.13	88.50	6,929.36	246.70	332.03	333.06	9.00	8.99	0.48
7,100.00	64.62	88.72	6,952.54	247.77	376.31	377.34	9.00	8.99	0.44
7,150.00	69.12	88.93	6,972.17	248.71	422.27	423.30	9.00	8.99	0.41
7,200.00	73.62	89.12	6,988.14	249.51	469.63	470.67	9.00	8.99	0.39
7,250.00	78.11	89.31	7,000.35	250.18	518.10	519.14	9.00	8.99	0.37
7,300.00	82.61	89.48	7,008.72	250.70	567.38	568.42	9.00	8.99	0.36
7,350.00	87.11	89.66	7,013.20	251.07	617.16	618.21	9.00	8.99	0.35
7,378.88	89.70	89.76	7,014.00	251.21	646.03	647.07	9.00	8.99	0.35
Start 9287.07 hold at 7378.88 MD									
7,400.00	89.70	89.76	7,014.11	251.30	667.15	668.19	0.00	0.00	0.00
7,500.00	89.70	89.76	7,014.63	251.72	767.14	768.19	0.00	0.00	0.00
7,600.00	89.70	89.76	7,015.14	252.14	867.14	868.19	0.00	0.00	0.00
7,700.00	89.70	89.76	7,015.66	252.56	967.14	968.19	0.00	0.00	0.00
7,800.00	89.70	89.76	7,016.18	252.98	1,067.14	1,068.19	0.00	0.00	0.00
7,900.00	89.70	89.76	7,016.69	253.41	1,167.13	1,168.19	0.00	0.00	0.00
8,000.00	89.70	89.76	7,017.21	253.83	1,267.13	1,268.18	0.00	0.00	0.00
8,100.00	89.70	89.76	7,017.73	254.25	1,367.13	1,368.18	0.00	0.00	0.00
8,200.00	89.70	89.76	7,018.24	254.67	1,467.13	1,468.18	0.00	0.00	0.00
8,300.00	89.70	89.76	7,018.76	255.09	1,567.13	1,568.18	0.00	0.00	0.00
8,400.00	89.70	89.76	7,019.28	255.51	1,667.12	1,668.18	0.00	0.00	0.00
8,500.00	89.70	89.76	7,019.79	255.93	1,767.12	1,768.18	0.00	0.00	0.00
8,600.00	89.70	89.76	7,020.31	256.35	1,867.12	1,868.18	0.00	0.00	0.00
8,700.00	89.70	89.76	7,020.83	256.77	1,967.12	1,968.17	0.00	0.00	0.00
8,800.00	89.70	89.76	7,021.35	257.19	2,067.11	2,068.17	0.00	0.00	0.00
8,900.00	89.70	89.76	7,021.86	257.61	2,167.11	2,168.17	0.00	0.00	0.00
9,000.00	89.70	89.76	7,022.38	258.03	2,267.11	2,268.17	0.00	0.00	0.00
9,100.00	89.70	89.76	7,022.90	258.45	2,367.11	2,368.17	0.00	0.00	0.00
9,200.00	89.70	89.76	7,023.41	258.87	2,467.11	2,468.17	0.00	0.00	0.00
9,300.00	89.70	89.76	7,023.93	259.29	2,567.10	2,568.17	0.00	0.00	0.00
9,400.00	89.70	89.76	7,024.45	259.71	2,667.10	2,668.17	0.00	0.00	0.00
9,500.00	89.70	89.76	7,024.96	260.13	2,767.10	2,768.16	0.00	0.00	0.00
9,600.00	89.70	89.76	7,025.48	260.55	2,867.10	2,868.16	0.00	0.00	0.00
9,700.00	89.70	89.76	7,026.00	260.97	2,967.09	2,968.16	0.00	0.00	0.00
9,800.00	89.70	89.76	7,026.51	261.39	3,067.09	3,068.16	0.00	0.00	0.00
9,900.00	89.70	89.76	7,027.03	261.81	3,167.09	3,168.16	0.00	0.00	0.00
10,000.00	89.70	89.76	7,027.55	262.23	3,267.09	3,268.16	0.00	0.00	0.00
10,100.00	89.70	89.76	7,028.06	262.65	3,367.09	3,368.16	0.00	0.00	0.00
10,200.00	89.70	89.76	7,028.58	263.07	3,467.08	3,468.15	0.00	0.00	0.00
10,300.00	89.70	89.76	7,029.10	263.49	3,567.08	3,568.15	0.00	0.00	0.00
10,400.00	89.70	89.76	7,029.61	263.91	3,667.08	3,668.15	0.00	0.00	0.00
10,500.00	89.70	89.76	7,030.13	264.34	3,767.08	3,768.15	0.00	0.00	0.00
10,600.00	89.70	89.76	7,030.65	264.76	3,867.07	3,868.15	0.00	0.00	0.00
10,700.00	89.70	89.76	7,031.17	265.18	3,967.07	3,968.15	0.00	0.00	0.00
10,800.00	89.70	89.76	7,031.68	265.60	4,067.07	4,068.15	0.00	0.00	0.00
10,900.00	89.70	89.76	7,032.20	266.02	4,167.07	4,168.15	0.00	0.00	0.00
11,000.00	89.70	89.76	7,032.72	266.44	4,267.07	4,268.14	0.00	0.00	0.00
11,100.00	89.70	89.76	7,033.23	266.86	4,367.06	4,368.14	0.00	0.00	0.00
11,200.00	89.70	89.76	7,033.75	267.28	4,467.06	4,468.14	0.00	0.00	0.00
11,300.00	89.70	89.76	7,034.27	267.70	4,567.06	4,568.14	0.00	0.00	0.00

SDT
Planning Report

Database:	EDM 5000 Multi User Db	Local Co-ordinate Reference:	Well Rosa Unit 554H
Company:	Logos Operating LLC	TVD Reference:	6433.5+25 @ 6458.50usft (H&P 257)
Project:	Rio Arriba, NM (NAD83)	MD Reference:	6433.5+25 @ 6458.50usft (H&P 257)
Site:	Rosa Unit 5	North Reference:	True
Well:	Rosa Unit 554H	Survey Calculation Method:	Minimum Curvature
Wellbore:	OH		
Design:	Prelim 3		

Planned Survey									
Measured Depth (usft)	Inclination (°)	Azimuth (°)	Vertical Depth (usft)	+N/-S (usft)	+E/-W (usft)	Vertical Section (usft)	Dogleg Rate (°/100usft)	Build Rate (°/100usft)	Turn Rate (°/100usft)
11,400.00	89.70	89.76	7,034.78	268.12	4,667.06	4,668.14	0.00	0.00	0.00
11,500.00	89.70	89.76	7,035.30	268.54	4,767.05	4,768.14	0.00	0.00	0.00
11,600.00	89.70	89.76	7,035.82	268.96	4,867.05	4,868.14	0.00	0.00	0.00
11,700.00	89.70	89.76	7,036.33	269.38	4,967.05	4,968.13	0.00	0.00	0.00
11,800.00	89.70	89.76	7,036.85	269.80	5,067.05	5,068.13	0.00	0.00	0.00
11,900.00	89.70	89.76	7,037.37	270.22	5,167.05	5,168.13	0.00	0.00	0.00
12,000.00	89.70	89.76	7,037.88	270.64	5,267.04	5,268.13	0.00	0.00	0.00
12,100.00	89.70	89.76	7,038.40	271.06	5,367.04	5,368.13	0.00	0.00	0.00
12,200.00	89.70	89.76	7,038.92	271.48	5,467.04	5,468.13	0.00	0.00	0.00
12,300.00	89.70	89.76	7,039.43	271.90	5,567.04	5,568.13	0.00	0.00	0.00
12,400.00	89.70	89.76	7,039.95	272.32	5,667.03	5,668.13	0.00	0.00	0.00
12,500.00	89.70	89.76	7,040.47	272.74	5,767.03	5,768.12	0.00	0.00	0.00
12,600.00	89.70	89.76	7,040.99	273.16	5,867.03	5,868.12	0.00	0.00	0.00
12,700.00	89.70	89.76	7,041.50	273.58	5,967.03	5,968.12	0.00	0.00	0.00
12,800.00	89.70	89.76	7,042.02	274.00	6,067.03	6,068.12	0.00	0.00	0.00
12,900.00	89.70	89.76	7,042.54	274.42	6,167.02	6,168.12	0.00	0.00	0.00
13,000.00	89.70	89.76	7,043.05	274.84	6,267.02	6,268.12	0.00	0.00	0.00
13,100.00	89.70	89.76	7,043.57	275.26	6,367.02	6,368.12	0.00	0.00	0.00
13,200.00	89.70	89.76	7,044.09	275.69	6,467.02	6,468.11	0.00	0.00	0.00
13,300.00	89.70	89.76	7,044.60	276.11	6,567.01	6,568.11	0.00	0.00	0.00
13,400.00	89.70	89.76	7,045.12	276.53	6,667.01	6,668.11	0.00	0.00	0.00
13,500.00	89.70	89.76	7,045.64	276.95	6,767.01	6,768.11	0.00	0.00	0.00
13,600.00	89.70	89.76	7,046.15	277.37	6,867.01	6,868.11	0.00	0.00	0.00
13,700.00	89.70	89.76	7,046.67	277.79	6,967.01	6,968.11	0.00	0.00	0.00
13,800.00	89.70	89.76	7,047.19	278.21	7,067.00	7,068.11	0.00	0.00	0.00
13,900.00	89.70	89.76	7,047.70	278.63	7,167.00	7,168.11	0.00	0.00	0.00
14,000.00	89.70	89.76	7,048.22	279.05	7,267.00	7,268.10	0.00	0.00	0.00
14,100.00	89.70	89.76	7,048.74	279.47	7,367.00	7,368.10	0.00	0.00	0.00
14,200.00	89.70	89.76	7,049.25	279.89	7,466.99	7,468.10	0.00	0.00	0.00
14,300.00	89.70	89.76	7,049.77	280.31	7,566.99	7,568.10	0.00	0.00	0.00
14,400.00	89.70	89.76	7,050.29	280.73	7,666.99	7,668.10	0.00	0.00	0.00
14,500.00	89.70	89.76	7,050.81	281.15	7,766.99	7,768.10	0.00	0.00	0.00
14,600.00	89.70	89.76	7,051.32	281.57	7,866.99	7,868.10	0.00	0.00	0.00
14,700.00	89.70	89.76	7,051.84	281.99	7,966.98	7,968.09	0.00	0.00	0.00
14,800.00	89.70	89.76	7,052.36	282.41	8,066.98	8,068.09	0.00	0.00	0.00
14,900.00	89.70	89.76	7,052.87	282.83	8,166.98	8,168.09	0.00	0.00	0.00
15,000.00	89.70	89.76	7,053.39	283.25	8,266.98	8,268.09	0.00	0.00	0.00
15,100.00	89.70	89.76	7,053.91	283.67	8,366.97	8,368.09	0.00	0.00	0.00
15,200.00	89.70	89.76	7,054.42	284.09	8,466.97	8,468.09	0.00	0.00	0.00
15,300.00	89.70	89.76	7,054.94	284.51	8,566.97	8,568.09	0.00	0.00	0.00
15,400.00	89.70	89.76	7,055.46	284.93	8,666.97	8,668.09	0.00	0.00	0.00
15,500.00	89.70	89.76	7,055.97	285.35	8,766.97	8,768.08	0.00	0.00	0.00
15,600.00	89.70	89.76	7,056.49	285.77	8,866.96	8,868.08	0.00	0.00	0.00
15,700.00	89.70	89.76	7,057.01	286.19	8,966.96	8,968.08	0.00	0.00	0.00
15,800.00	89.70	89.76	7,057.52	286.62	9,066.96	9,068.08	0.00	0.00	0.00
15,900.00	89.70	89.76	7,058.04	287.04	9,166.96	9,168.08	0.00	0.00	0.00
16,000.00	89.70	89.76	7,058.56	287.46	9,266.95	9,268.08	0.00	0.00	0.00
16,100.00	89.70	89.76	7,059.08	287.88	9,366.95	9,368.08	0.00	0.00	0.00
16,200.00	89.70	89.76	7,059.59	288.30	9,466.95	9,468.07	0.00	0.00	0.00
16,300.00	89.70	89.76	7,060.11	288.72	9,566.95	9,568.07	0.00	0.00	0.00
16,400.00	89.70	89.76	7,060.63	289.14	9,666.95	9,668.07	0.00	0.00	0.00
16,500.00	89.70	89.76	7,061.14	289.56	9,766.94	9,768.07	0.00	0.00	0.00
16,600.00	89.70	89.76	7,061.66	289.98	9,866.94	9,868.07	0.00	0.00	0.00
16,665.95	89.70	89.76	7,062.00	290.26	9,932.89	9,934.02	0.00	0.00	0.00

SDT Planning Report

Database:	EDM 5000 Multi User Db	Local Co-ordinate Reference:	Well Rosa Unit 554H
Company:	Logos Operating LLC	TVD Reference:	6433.5+25 @ 6458.50usft (H&P 257)
Project:	Rio Arriba, NM (NAD83)	MD Reference:	6433.5+25 @ 6458.50usft (H&P 257)
Site:	Rosa Unit 5	North Reference:	True
Well:	Rosa Unit 554H	Survey Calculation Method:	Minimum Curvature
Wellbore:	OH		
Design:	Prelim 3		

Planned Survey									
Measured Depth (usft)	Inclination (°)	Azimuth (°)	Vertical Depth (usft)	+N/-S (usft)	+E/-W (usft)	Vertical Section (usft)	Dogleg Rate (°/100usft)	Build Rate (°/100usft)	Turn Rate (°/100usft)
TD at 16665.95									

Design Targets									
Target Name	Dip Angle (°)	Dip Dir. (°)	TVD (usft)	+N/-S (usft)	+E/-W (usft)	Northing (usft)	Easting (usft)	Latitude	Longitude
RU 554H SHL - hit/miss target - Shape - plan hits target center - Point	0.00	0.00	0.00	0.00	0.00	2,153,914.28	2,829,089.45	36.918641	-107.470724
RU 554H KOP - plan misses target center by 0.02usft at 6383.68usft MD (6379.36 TVD, 224.25 N, 12.81 E) - Point	0.00	0.00	6,379.36	224.23	12.81	2,154,138.55	2,829,101.40	36.919257	-107.470680
RU 554H POE - plan hits target center - Point	0.00	0.00	7,014.00	251.21	646.03	2,154,167.95	2,829,734.52	36.919331	-107.468514
RU 554H PBHL - plan hits target center - Point	0.00	0.00	7,062.00	290.26	9,932.89	2,154,242.29	2,839,021.16	36.919433	-107.436745

Formations						
Measured Depth (usft)	Vertical Depth (usft)	Name	Lithology	Dip (°)	Dip Direction (°)	
2,407.36	2,406.00	Ojo Alamo		0.00		
2,524.45	2,523.00	Kirtland		0.00		
2,927.75	2,926.00	Fruitland		0.00		
3,040.83	3,039.00	T/Coals		0.00		
3,237.98	3,236.00	B/Coals		0.00		
3,415.11	3,413.00	Pictured Cliffs		0.00		
3,534.20	3,532.00	Lewis		0.00		
4,667.04	4,664.00	Chacra		0.00		
5,116.37	5,113.00	U/Cliff House		0.00		
5,444.62	5,441.00	Cliff House		0.00		
5,489.65	5,486.00	Menefee		0.00		
5,709.82	5,706.00	Point Lookout		0.00		
6,222.20	6,218.00	Mancos		0.00		
6,876.98	6,824.00	Black Top		0.00		

SDT
Planning Report

Database:	EDM 5000 Multi User Db	Local Co-ordinate Reference:	Well Rosa Unit 554H
Company:	Logos Operating LLC	TVD Reference:	6433.5+25 @ 6458.50usft (H&P 257)
Project:	Rio Arriba, NM (NAD83)	MD Reference:	6433.5+25 @ 6458.50usft (H&P 257)
Site:	Rosa Unit 5	North Reference:	True
Well:	Rosa Unit 554H	Survey Calculation Method:	Minimum Curvature
Wellbore:	OH		
Design:	Prelim 3		

Plan Annotations					
Measured Depth (usft)	Vertical Depth (usft)	Local Coordinates		Comment	
		+N/-S (usft)	+E/-W (usft)		
500.00	500.00	0.00	0.00	Start Build 2.00	
610.43	610.40	2.12	0.12	Start 5773.24 hold at 610.43 MD	
6,383.67	6,379.36	224.25	12.81	Start DLS 9.00 TFO 86.50	
7,378.88	7,014.00	251.21	646.03	Start 9287.07 hold at 7378.88 MD	
16,665.95	7,062.00	290.26	9,932.89	TD at 16665.95	

C-102 Submit Electronically Via OCD Permitting	State of New Mexico Energy, Minerals & Natural Resources Department OIL CONSERVATION DIVISION	Revised July 9, 2024	Submittal Type: <input checked="" type="checkbox"/> Initial Submittal <input checked="" type="checkbox"/> Amended Report <input type="checkbox"/> As Drilled
---	--	----------------------	---

WELL LOCATION INFORMATION

API Number 30-045-38441	Pool Code 97232	Pool Name BASIN MANCOS
Property Code 320608	Property Name ROSA UNIT	
OGRID No. 289408	Operator Name LOGOS OPERATING, LLC	Well Number 554H
Ground Level Elevation 6434'		
Surface Owner: <input type="checkbox"/> State <input type="checkbox"/> Fee <input type="checkbox"/> Tribal <input checked="" type="checkbox"/> Federal		Mineral Owner: <input type="checkbox"/> State <input type="checkbox"/> Fee <input type="checkbox"/> Tribal <input checked="" type="checkbox"/> Federal

Surface Location (SHL)

UL	Section	Township	Range	Lot	Ft from the N/S	Ft from the E/W	Latitude	Longitude	County
C	9	31N	6W		975' NORTH	1895' WEST	36.918641° N	107.470724° W	SAN JUAN

Bottom Hole Location (BHL)

UL	Section	Township	Range	Lot	Ft from the N/S	Ft from the E/W	Latitude	Longitude	County
D	11	31N	6W		719' NORTH	1309' WEST	36.919433° N	107.436745° W	RIO ARRIBA

Dedicated Acres PENETRATED SPACING UNIT; SEC 9: NE/NW, NW/NE & NE/NE (120 AC.); SEC 10: N/2 N/2 (160 AC.); SEC 11: NW/NW & NE/NW (80 AC.) = 360 ACRES	Infill or Defining Well Infill	Defining Well API	Overlapping Spacing Unit (Y/N) N	Consolidation Code Unitization
Order Numbers: R-13457	Well Setbacks are under Common Ownership: <input type="checkbox"/> Yes <input checked="" type="checkbox"/> No			

Kick Off Point (KOP)

UL	Section	Township	Range	Lot	Ft from the N/S	Ft from the E/W	Latitude	Longitude	County
C	9	31N	6W		751' NORTH	1907' WEST	36.919257° N	107.470680° W	SAN JUAN

Fist Take Point (FTP)

UL	Section	Township	Range	Lot	Ft from the N/S	Ft from the E/W	Latitude	Longitude	County
C	9	31N	6W		724' NORTH	2541' WEST	36.919331° N	107.468514° W	SAN JUAN

Last Take Point (LTP)

UL	Section	Township	Range	Lot	Ft from the N/S	Ft from the E/W	Latitude	Longitude	County
D	11	31N	6W		719' NORTH	1309' WEST	36.919433° N	107.436745° W	RIO ARRIBA

Unitized Area or Area of Uniform Interest ROSA	Spacing Unit Type <input checked="" type="checkbox"/> Horizontal <input type="checkbox"/> Vertical	Ground Floor Elevation
--	--	------------------------

OPERATOR CERTIFICATIONS

I hereby certify that the information contained herein is true and complete to the best of my knowledge and belief, and, if the well is a vertical or directional well, that this organization either owns a working interest or unleased mineral interest in the land including the proposed bottom hole location or has a right to drill this well at this location pursuant to a contract with an owner of a working interest or unleased mineral interest, or to a voluntary pooling agreement or a compulsory pooling order heretofore entered by the division.

If this well is a horizontal well, I further certify that this organization has received the consent of at least one lessee or owner of a working interest or unleased mineral interest in each tract (in the target pool or formation) in which any part of the well's completed interval will be located or obtained a compulsory pooling order from the division.

Etta Trujillo

3/13/2025

Signature

Date

Etta Trujillo

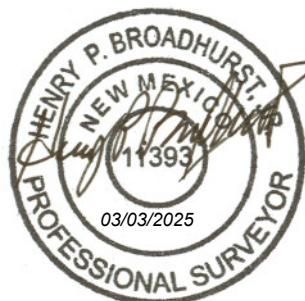
Printed Name

etrujillo@logosresourcesllc.com

E-mail Address

SURVEYOR CERTIFICATIONS

I hereby certify that the well location shown on this plat was plotted from field notes of actual surveys made by me or under my supervision, and that the same is true and correct to the best of my belief.



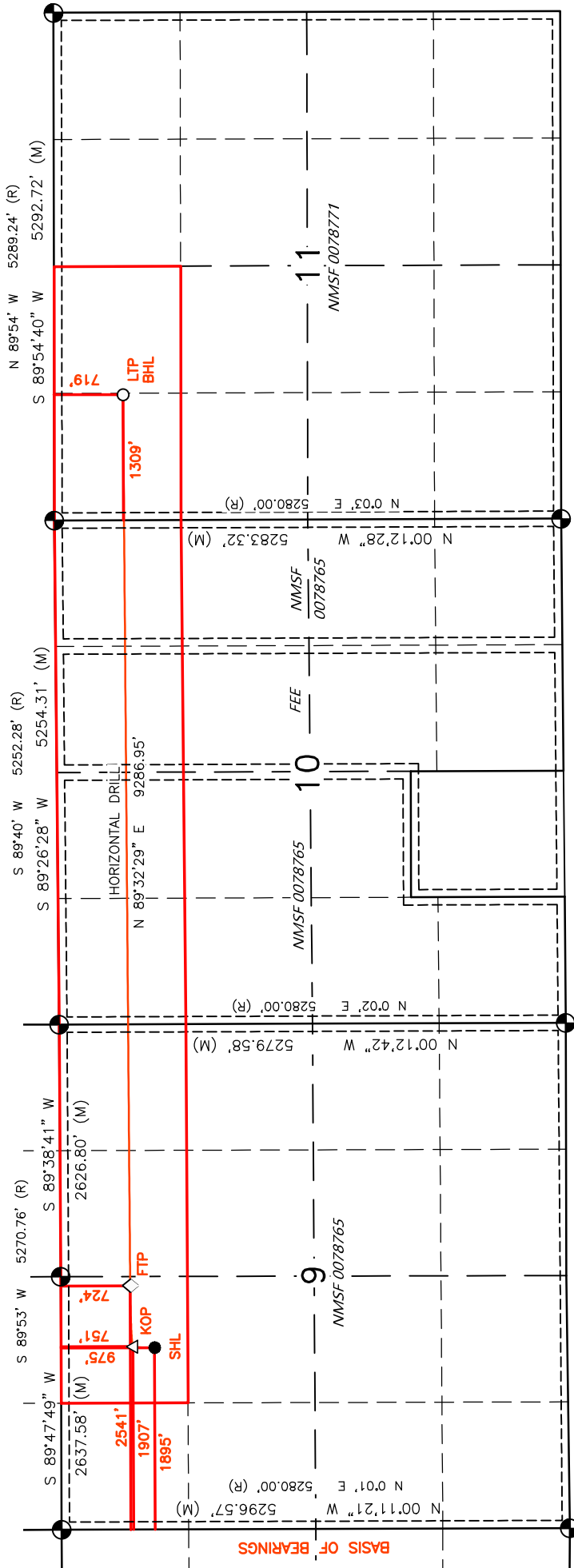
Signature and Seal of Professional Surveyor:

Certificate Number

11393

Date of Survey

FEBRUARY 26, 2025



- SURFACE LOCATION (SHL)** ●

975' FNL 1895' FWL
SEC. 9, T31N, R6W
LAT. 36.918641° N (NAD83)
LONG. 107.470724° W (NAD83)
- KICK OFF POINT (KOP)** ▲

751' FNL 1907' FWL
SEC. 9, T31N, R6W
LAT. 36.919257° N (NAD83)
LONG. 107.470680° W (NAD83)
- FIRST TAKE POINT (FTP)** ◆

724' FNL 2541' FWL
SEC. 9, T31N, R6W
LAT. 36.919331° N (NAD83)
LONG. 107.468514° W (NAD83)
- LAST TAKE POINT (LTP)** □

719' FNL 1309' FWL
SEC. 11, T31N, R6W
LAT. 36.919433° N (NAD83)
LONG. 107.436744° W (NAD83)
- BOTTOM HOLE LOCATION (BHL)** ○

719' FNL 1309' FWL
SEC. 11, T31N, R6W
LAT. 36.919433° N (NAD83)
LONG. 107.436745° W (NAD83)

ROSA UNIT #554H

SURFACE HOLE LOCATION NMSF 0078765
975' FNL, 1895' FWL
LOCATED IN THE NE/NW OF SECTION 9,
T31N, R6W, N.M.P.M., SAN JUAN COUNTY, NEW MEXICO
LATITUDE: 36.918641°N LONGITUDE: 107.470724°W (NAD83)

PPP-1 (FIRST TAKE POINT) NMSF 0078765
724' FNL, 2541' FWL
LOCATED IN THE NE/NW OF SECTION 9,
T31N, R6W, N.M.P.M., SAN JUAN COUNTY, NEW MEXICO
LATITUDE: 36.919331°N LONGITUDE: 107.468514°W (NAD83)

PPP-2 NMSF 0078765
719' FNL, 1' FWL
LOCATED IN THE NW/NW OF SECTION 10,
T31N, R6W, N.M.P.M., SAN JUAN COUNTY, NEW MEXICO
LATITUDE: 36.919362°N LONGITUDE: 107.459195°W (NAD83)

PPP-3 FEE
723' FNL, 2627' FEL
LOCATED IN THE NW/NE OF SECTION 10,
T31N, R6W, N.M.P.M., SAN JUAN COUNTY, NEW MEXICO
LATITUDE: 36.919391°N LONGITUDE: 107.450208°W (NAD83)

PPP-4 NMSF 0078765
725' FNL, 1314' FEL
LOCATED IN THE NE/NE OF SECTION 10,
T31N, R6W, N.M.P.M., SAN JUAN COUNTY, NEW MEXICO
LATITUDE: 36.919405°N LONGITUDE: 107.445715°W (NAD83)

PPP-5 NMSF 0078771
728' FNL, 1' FWL
LOCATED IN THE NW/NW OF SECTION 11,
T31N, R6W, N.M.P.M., RIO ARRIBA COUNTY, NEW MEXICO
LATITUDE: 36.919419°N LONGITUDE: 107.441221°W (NAD83)

PPP-6 (LAST TAKE POINT) NMSF 0078771
719' FNL, 1309' FWL
LOCATED IN THE NW/NW OF SECTION 11,
T31N, R6W, N.M.P.M., RIO ARRIBA COUNTY, NEW MEXICO
LATITUDE: 36.919433°N LONGITUDE: 107.436745°W (NAD83)

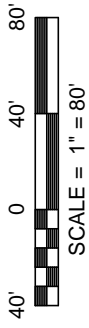
WELL FLAG

LATITUDE: 36.918641° N
 LONGITUDE: 107.470724° W
 DATUM: NAD83

LOGOS OPERATING, LLC

ROSA UNIT #554H

975' FNL & 1895' FWL
 LOCATED IN THE NE/4 NW/4 OF SECTION 9,
 T31N, R6W, N.M.P.M.,
 SAN JUAN COUNTY, NEW MEXICO
 GROUND ELEVATION: 6433', NAVD 88
 FINISHED PAD ELEVATION: 6433.5', NAVD 88



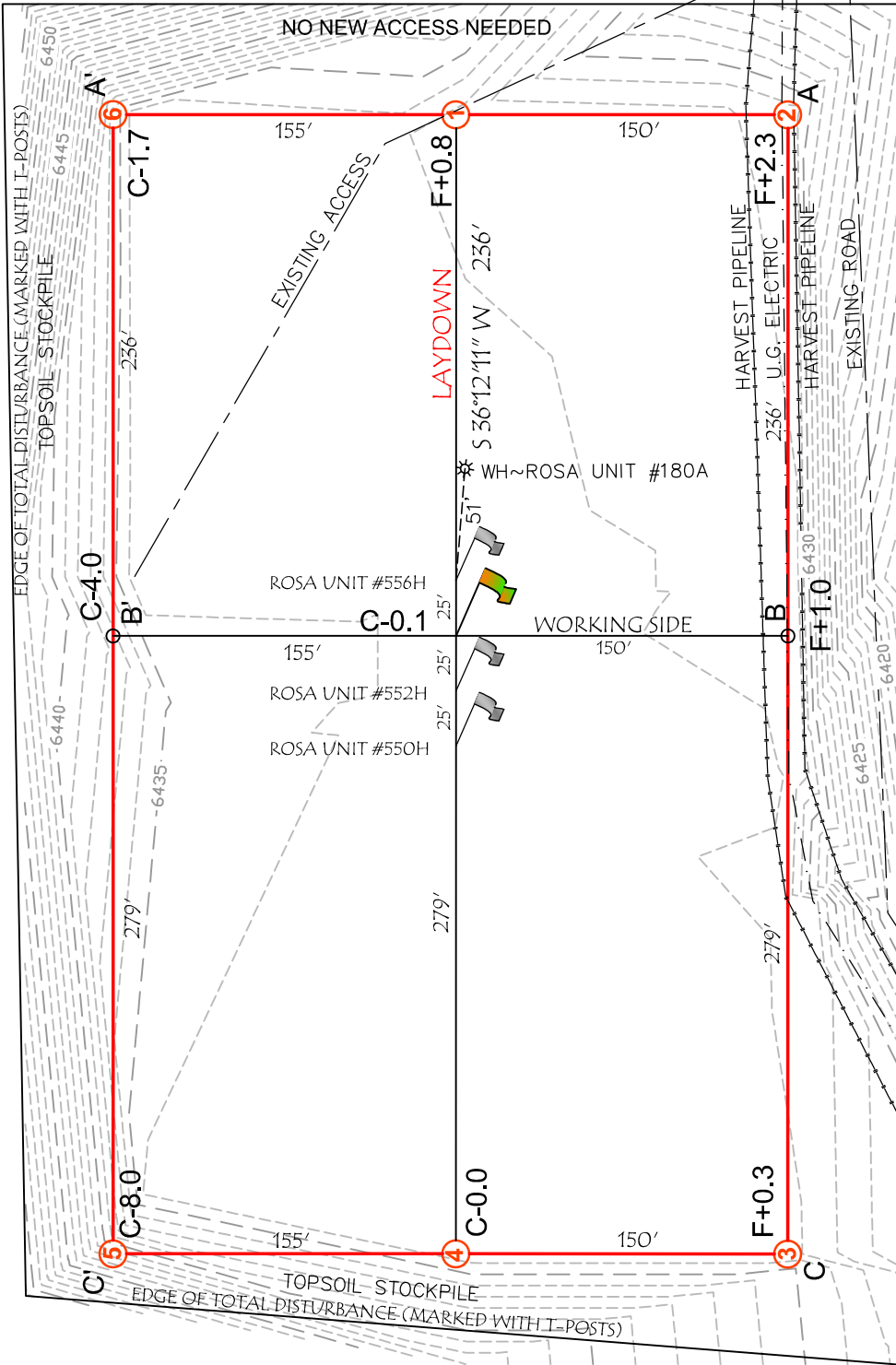
NOTES:

- 1.) BASIS OF BEARING: BETWEEN FOUND MONUMENTS AT THE SOUTHWEST CORNER AND THE NORTHWEST CORNER OF SECTION 9, TOWNSHIP 31 NORTH, RANGE 6 WEST, N.M.P.M., SAN JUAN COUNTY, NEW MEXICO. LINE BEARS: N 00°11'21" W. A DISTANCE OF 576 FEET MEASURED BY G.E.S. AND BASED ON THE N.M.S.P. COORDINATE SYSTEM (WEST ZONE).
- 2.) LATITUDE, LONGITUDE AND ELLIPSOIDAL HEIGHT BASED ON AZTEC CORRS L1 PHASE CENTER. DISTANCES SHOWN ARE GROUND DISTANCES USING A TRAVERSE MERCATOR PROJECTION FROM A WGS84 ELLIPSOID, CONVERTED TO NAD83. ELEVATIONS AS PREDICTED BY 140966.
- 3.) LOCATION OF UNDERGROUND UTILITIES DEPICTED ARE APPROXIMATE. PRIOR TO EXCAVATION UNDERGROUND UTILITIES SHOULD BE FIELD VERIFIED. ALL CONSTRUCTION ACTIVITIES SHOULD BE FIELD VERIFIED WITH NEW MEXICO ONE-CALL AUTHORITIES AT LEAST 48 HOURS PRIOR TO CONSTRUCTION.
- 4.) T-POSTS HAVE BEEN SET TO DEFINE THE EDGE OF DISTURBANCE WHICH ARE 50 FEET OFFSETS FROM THE EDGE OF THE STAKED WELL PAD.

SLOPES TO BE CONSTRUCTED TO MATCH THE ORIGINAL CONTOURS AS CLOSE AS POSSIBLE.

~ SURFACE OWNERSHIP ~	~
BUREAU OF LAND MANAGEMENT	

TOTAL PERMITTED AREA
 615' x 400' = 5.647 ACRES
 SCALE: 1" = 80'
 DATE: 02/27/25
 DRAWN BY: GRR



NOTE:
 CHENAULT CONSULTING, INC. IS NOT LIABLE FOR UNDERGROUND UTILITIES OR PIPELINES. CONTRACTOR SHOULD CALL ONE-CALL FOR LOCATION OF ANY MARKED OR UNMARKED, BURIED PIPELINES OR CABLES ON WELL PAD, IN CONSTRUCTION ZONE AND/OR ACCESS ROAD AT LEAST TWO (2) WORKING DAYS PRIOR TO CONSTRUCTION.



CHENAULT CONSULTING INC.
 4800 COLLEGE BLVD.,
 SUITE 201
 FARMINGTON, NM 87402
 (505) 325-7707

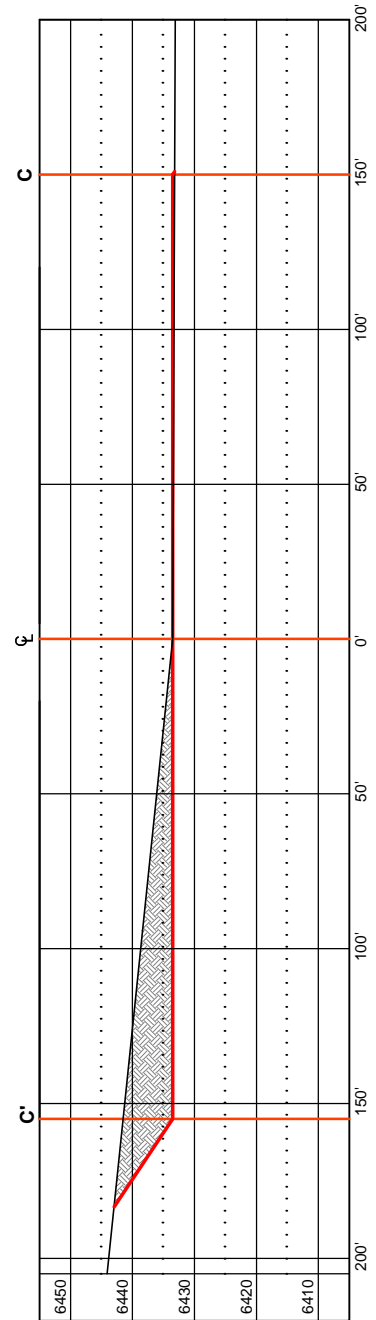
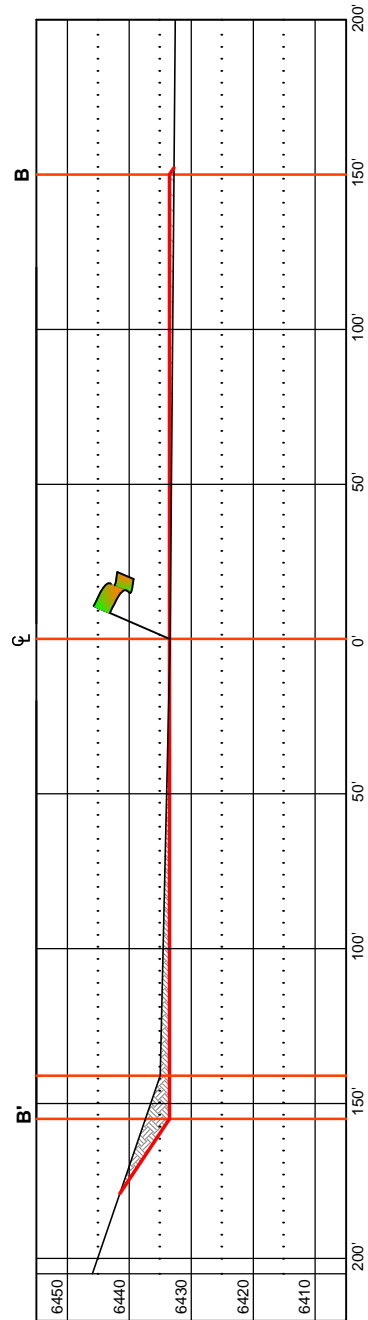
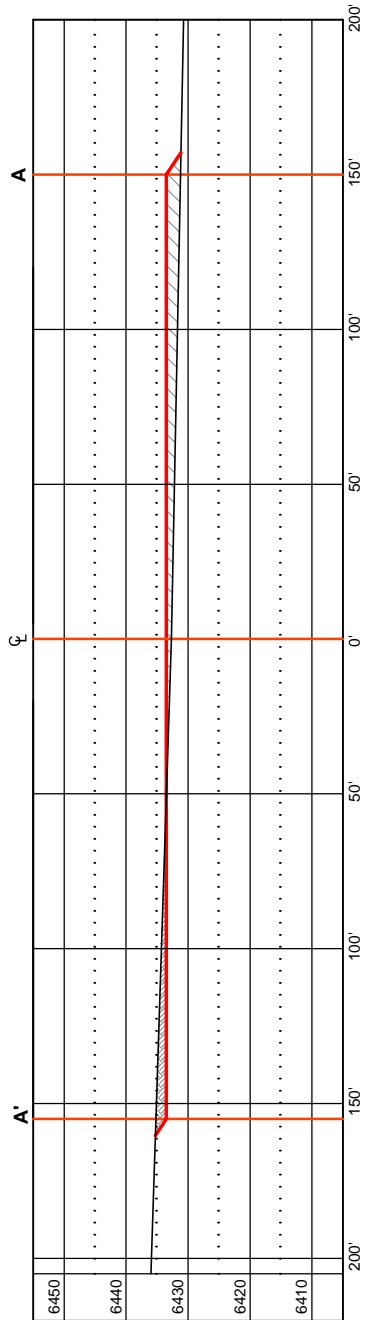
WELL FLAG

LATITUDE: 36.918641° N
LONGITUDE: 107.470724° W
DATUM: NAD83

LOGOS OPERATING, LLC
ROSA UNIT #554H

975' FNL & 1895' FWL
LOCATED IN THE NE/4 NW/4 OF SECTION 9,
T31N, R6W, N.M.P.M.,
SAN JUAN COUNTY, NEW MEXICO
GROUND ELEVATION: 6433', NAVD 88
FINISHED PAD ELEVATION: 6433.5', NAVD 88

THIS DIAGRAM IS AN ESTIMATE
OF DIRT BALANCE AND IS NOT
INTENDED TO BE AN EXACT
MEASURE OF VOLUME



VERT. SCALE: 1" = 30'
HORZ. SCALE: 1" = 60'
DATE: 02/27/25
DRAWN BY: GRR



WELL FLAG

LATITUDE: 36.918641° N
LONGITUDE: 107.470724° W
DATUM: NAD83

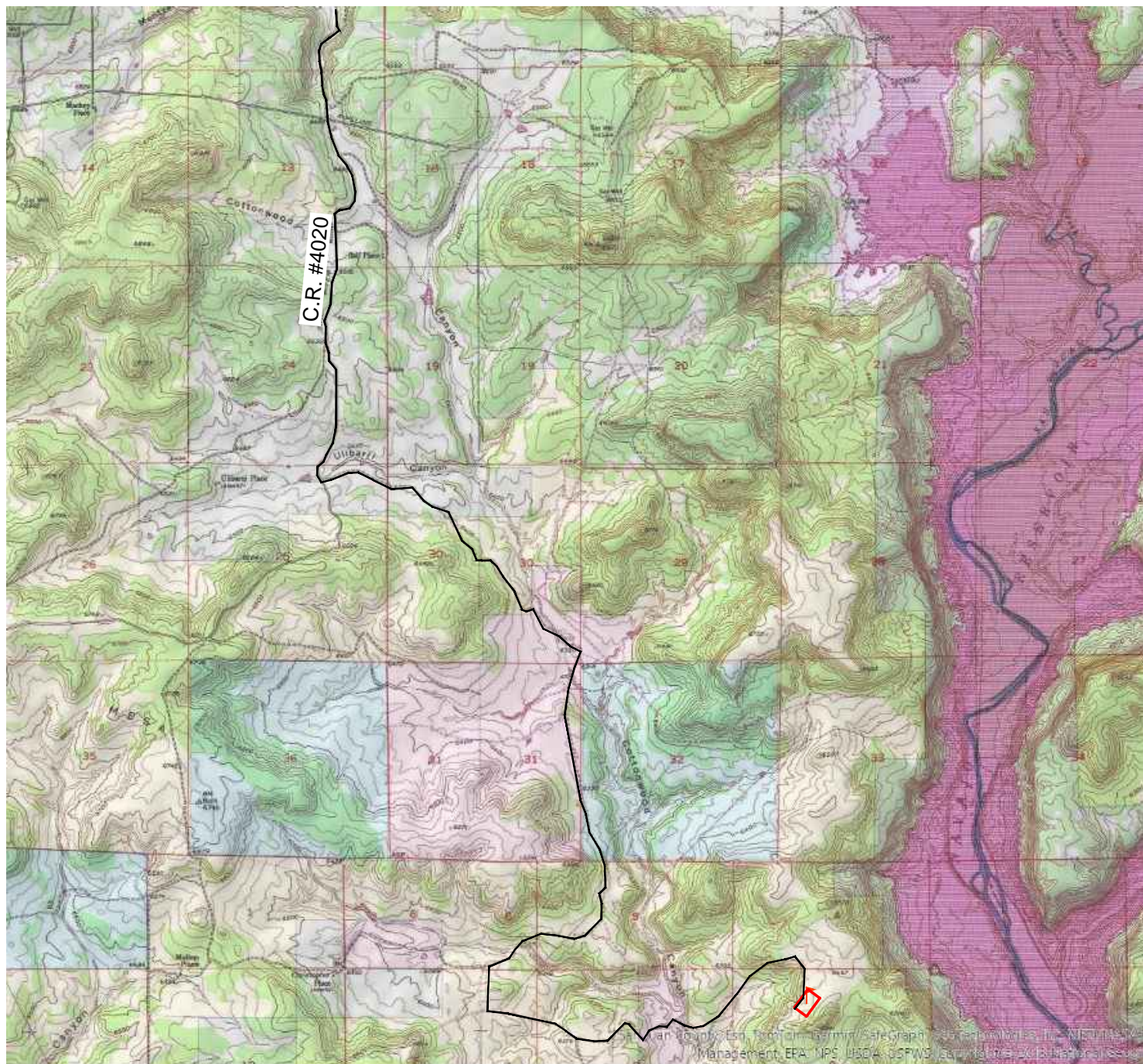
LOGOS OPERATING, LLC

ROSA UNIT #554H

975' FNL & 1895' FWL
LOCATED IN THE NE/4 NW/4 OF SECTION 9,
T31N, R6W, N.M.P.M.,
SAN JUAN COUNTY, NEW MEXICO
NO NEW ACCESS NEEDED

OWNERSHIP LEGEND

- BLM
- BOR
- FOREST
- ALLOTTED/TRIBAL
- PRIVATE
- STATE



U.S.G.S. QUAD: BANCOS MESA, NW
SCALE: 1" = 4000'
DATE: 02/27/25
DRAWN BY: GRR

CCI

CHENAULT CONSULTING INC.

4800 COLLEGE BLVD.
SUITE 201
FARMINGTON, NM 87402
(505) 325-7707

LOGOS OPERATING, LLC

ROSA UNIT #554H

LOCATED IN THE NE/4 NW/4 OF SECTION 9,
T31N, R6W, N.M.P.M.,
SAN JUAN COUNTY, NEW MEXICO

DIRECTIONS

- 1) FROM THE INTERSECTION OF HIGHWAY 172 & HIGHWAY 151 IN IGNACIO, CO, GO EAST ON HIGHWAY 151 FOR 12.0 MILES TO COUNTY ROAD #330.
- 2) TURN RIGHT ON COUNTY ROAD #330 FOR 1.9 MILES TO COUNTY ROAD #4020.
- 3) TURN RIGHT ONTO COUNTY ROAD #4020 AND GO 3.9 MILES TO A DIRT ROAD ON THE LEFT.
- 4) TURN LEFT OFF OF COUNTY ROAD #4020 AND GO 1.7 MILES TO A DIRT ROAD ON THE RIGHT.
- 5) TURN RIGHT AND GO 2.0 MILES TO A DIRT ROAD ON THE LEFT.
- 6) TURN LEFT AND GO 0.2 MILES TO A DIRT ROAD ON THE LEFT.
- 7) TURN LEFT AND GO 2.0 MILES TO A DIRT ROAD ON THE LEFT.
- 9) TURN LEFT AND GO TO THE EXISTING ROSA UNIT #180A WELL PAD

WELL FLAG LOCATED AT LAT. 36.918641° N, LONG. 107.470724° W (NAD 83).

CCI

CHENAULT CONSULTING INC.

4800 COLLEGE BLVD.
SUITE 201
FARMINGTON, NM 87402
(505) 325-7707

DATE: 02/27/25

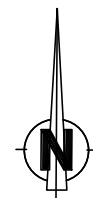
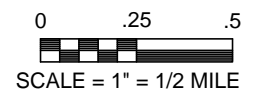
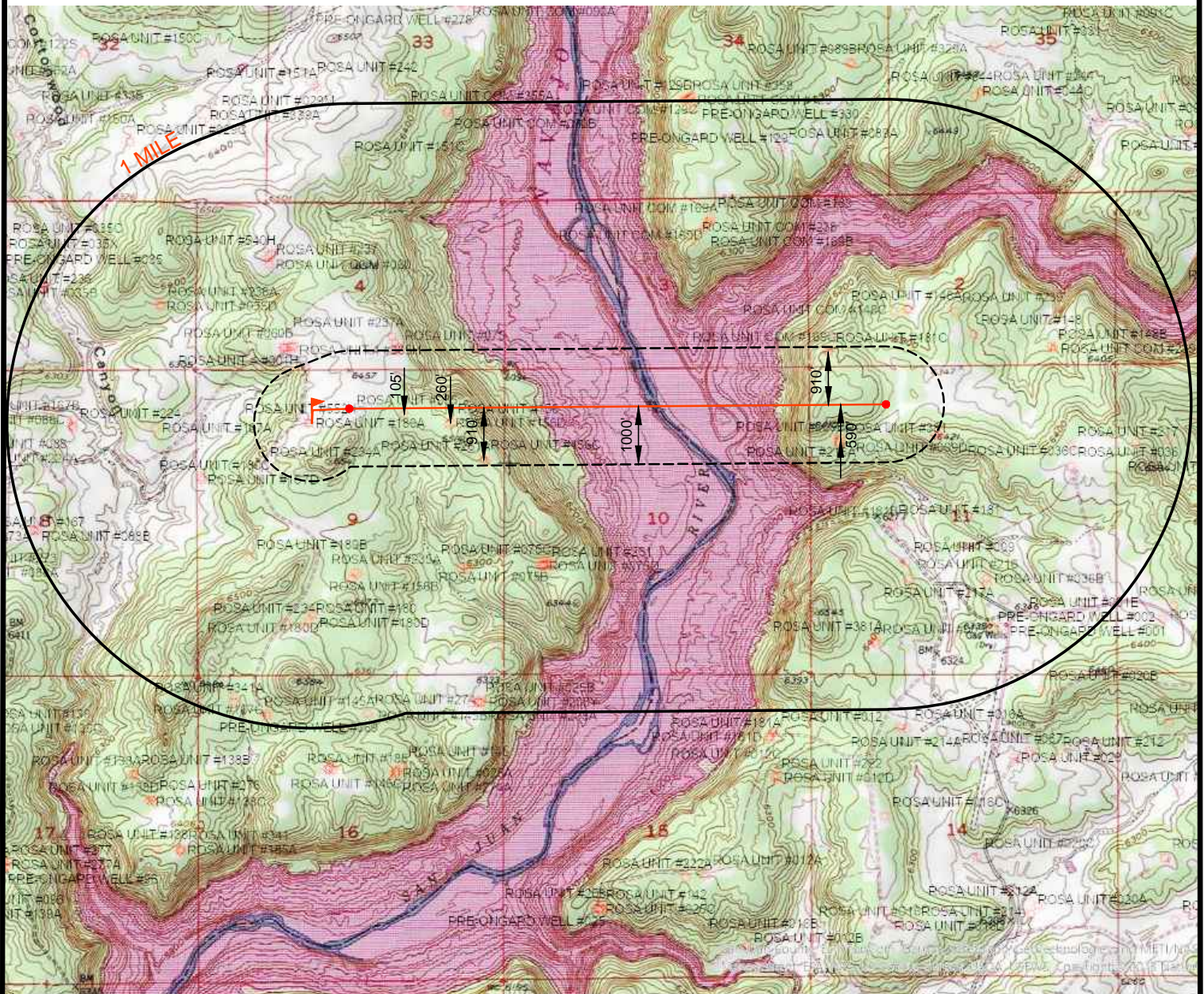
DRAWN BY: GRR
Released to Imaging: 3/28/2025 2:29:31 PM

WELL FLAG
LATITUDE: 36.918641° N
LONGITUDE: 107.470724° W
DATUM: NAD83

LOGOS OPERATING, LLC
ROSA UNIT #554H
975' FNL & 1895' FWL
LOCATED IN THE NE/4 NW/4 OF SECTION 9,
T31N, R6W, N.M.P.M.,
SAN JUAN COUNTY, NEW MEXICO

- WELL LEGEND**
- GAS
 - ABANDONED GAS
 - INJECTION
 - ABANDONED
 - OIL
 - ABANDONED OIL
 - SALT WATER INJECTION
 - ABANDONED SALT WATER INJ

WELL LOCATION MAP



CCI
CHENAULT CONSULTING INC.

4800 COLLEGE BLVD.
SUITE 201
FARMINGTON, NM 87402
(505)-325-7707

DATE: 02/27/25
DRAWN BY: GRR



LOGOS Operating, LLC Operations Plan

Note: This procedure will be adjusted onsite based upon actual conditions

Date:	March 6th, 2025	Pool:	Basin Mancos
Well Name:	Rosa Unit 554H	GL Elevation:	6,434'
Surface Location:	Sec 9, T31N, R6W 975' FNL, 1895' FWL (36.918641° N, -107.470724° W – NAD83)	KB:	25'
Bottom Hole Location:	Sec 11, T31N, R6W 719' FNL, 1309' FWL (36.919433° N, -107.436745° W – NAD83)	Measured Depth:	16,666 (KB)
Lease Serial CA Serial	# NMSF078765 # NMNM78407E	County:	Rio Arriba

I. GEOLOGY

A. Formation Tops (Based on KB Elevation): Estimated top of important geological markers:
SURFACE FORMATION – NACIMIENTO

NAME	MD	TVD	NAME	MD	TVD
OJO ALAMO	2407'	2406'	*POINT LOOKOUT	5710'	5706'
KIRTLAND	2524'	2523'	*MANCOS	6222'	6218'
*FRUITLAND	2928'	2926'	KICKOFF POINT	6384'	6379'
*PICTURED CLIFFS	3415'	3413'	LANDING POINT	7379'	7014'
LEWIS	3534'	3532'	TD	16,666'	7062'
CHACRA	4667'	4664'			
*CLIFF HOUSE	5445'	5441'			
MENEFEE	5590'	5486'			

* indicates depth at which anticipated water, oil, gas or other mineral bearing formations are expected to be encountered.

B. **MUD LOGGING PROGRAM:** Mudlogger on location from KOP to TD.

C. **LOGGING PROGRAM:** LWD GR from surface casing to TD.

D. **NATURAL GAUGES:** Gauge any noticeable increases in gas flow. Record all gauges in Tour book and on morning reports.

II. DRILLING

A. **MUD PROGRAM:** LSND mud (WBM) will be used to drill the 26"/24" conductor hole. LSND (WBM) will be used to drill the 17-1/2" surface hole and 12-1/4" intermediate hole. A LSND (WBM) or (OBM) will be used to drill the 8-1/2" curve and lateral portion of the wellbore. Treat for lost circulation as necessary. Obtain 100% returns prior to cementing. Notify Engineering of any mud losses.

Above ground steel pits will be used for fluid and cuttings while drilling. In the unlikely event that a tank develops a leak, upon immediate visual discovery, the fluid would be transferred to another tank and contaminated soil would be removed and disposed. Any leaks, spills or other undesirable events will be reported in accordance with BLM NTL 3A. Rig crews will monitor the tanks at all times.



- B. **BOP TESTING:** The BOPE will be tested to **250 psi (Low) for 5 minutes** and **3000 psi (High) for 10 minutes**. Pressure test surface casing to **1500 psi for 30 minutes** and intermediate casing to **1500 psi for 30 minutes**. Utilize a BOPE Testing Unit with a recording chart and appropriate test plug for testing. The drum brakes will be inspected and tested each tour. BOP equipment will be tested every 30 days, after any repairs are made to the BOP equipment, and after the BOP equipment is subjected to pressure. Annular preventers will be functionally operated at least once per week. Pipe and blind rams shall be activated each trip or but not more than once a day. The New Mexico Oil & Gas Conservation Commission and the BLM will be notified 24 hours in advance of testing of BOPE. **All tests and inspections will be recorded and logged with time and results.** A full BOP test will be conducted when initially installed for the first well on the pad or if seals subject to test pressure are broken, following related repairs and at a minimum of 30 day intervals. A BOPE Shell Test only will be conducted for subsequent wells on the pad when seals subject to pressure have not been broken or repaired and fall within the 30 day interval of first full test.
- C. **GeoHazards:** There are no Geohazards
- D. **Maximum Anticipated Pressure:** 7,062' TVD x 0.43 = 3,037 psi
- E. **H2S Concerns:** There is no record of any naturally occurring H2S in any formation in the Rosa Unit. No H2S is anticipated in this formation or this well.

III. **MATERIALS**

A. **CASING EQUIPMENT:**

CASING TYPE	OHSIZE (IN)	DEPTH (MD)	CSG SIZE	WEIGHT	GRADE	CONN
CONDUCTOR	26" or 24"	320' or greater (GL)	20"	94 LBS	J-55 or equiv	LTC/BTC
SURFACE	17.5"	3,465'	13.375"	54.5 LBS	J-55 or equiv	LTC/BTC
INTERMEDIATE	12.25"	6,332'	9.625"	43.5 LBS	N-80 or equiv	LTC/BTC
PRODUCTION	8.5"	16,666'	5.5"	20 LBS	P-110 or equiv	LTC/BTC

NOTE: All casing depths are approximate, based on KB elevation and will be based on drilling conditions +/- 50'. Weights, grades and connections will be based on availability and may vary but will be equivalent or greater.

B. **FLOAT EQUIPMENT:**

1. **CONDUCTOR CASING:** 20" cement nose guide shoe. Place float collar 1 joint above shoe. Run (1) standard centralizer on each of the bottom (3) joints of casing.
2. **SURFACE CASING:** 13-3/8" cement nose guide shoe with float. Place float collar one joint above the shoe. Install (1) centralizer on each of the bottom (3) joints and one standard centralizer every (3) joints to 2,500 ft. Run (1) centralizer at 2,500 ft., 2,000ft., 1,500 ft., 1,000 ft., and 500ft.
 - Casing will be kept fluid filled during drilling
3. **INTERMEDIATE CASING:** 9-5/8" cement float shoe. Place float collar one joint above the shoe. Install (1) centralizer on each of the bottom (3) joints and one standard centralizer every (3) joints to 2,500 ft. Run (1) centralizer at 2,500 ft., 2,300ft., 2,000ft., 1,500 ft., and 1,000 ft. Optional use of DV Tools (2) will be strategically placed above loss circulation zones anticipated in the Mesaverde and Fruitland Coal. Optional use of cancelation plugs for DV tools may be used if losses while cementing are not encountered. Optional use of an ICP may be used in conjunction with DV Tools.
4. **PRODUCTION CASING:** Run 5-1/2" casing with cement nose guide Float Shoe, 5-1/2" full or pup joints as necessary, Landing Collar, 5-1/2" full or pup joints as necessary, at least (1) one Toe Sleeve (Sliding Sleeve) positioned inside the applicable production area. Centralizer program will be determined by wellbore conditions. Production casing to be pressure tested



during completion operations with frac stack installed.

C. CEMENTING:

(Note: Cement type and volumes may be adjusted onsite due to actual conditions and availability)

1. CONDUCTOR: Casing shall be set at ~ 320'(GL) and cemented to surface. TOC at Surface.

Conductor - 20"	Top	Footage	Cement (ft3/ft) Annular Capacity	Excess (30%)	Total (ft3)	Total (bbl)	Slurry Yield (ft3/sk)	Sacks Cement	Density (PPG)
Type G	-	320	0.9599	1.3	449	80	1.10	408	15.8
Type III		320	0.9599	1.3	449	80	1.39	323	14.6

24" hole

Set Depth (GL) 320

2. SURFACE: Casing shall be kept fluid-filled while running into the hole to meet BLM minimum collapse requirements. The surface casing will be cemented in 1 stage. If cement does not circulate to the surface, a CBL will be run to determine TOC.

Surface - 13-3/8"	Top	Footage	Cement (ft3/ft) Annular Capacity	Excess (30%)	Total (ft3)	Total (bbl)	Slurry Yield (ft3/sk)	Sacks Cement	Density (PPG)
Stage 1 Tail	2,865	600	0.6947	1	450	80	1.160	388	15.8
Stage 1 Lead - OH	320	2,545	0.6947	1.25	2,210	394	2.665	829	11.8
Stage 2 Lead - Cased	-	320	1.019	1.25	408	73	2.665	153	11.8
					3,068	546		1371	

Set Depth 3465

3. INTERMEDIATE : Casing shall be kept fluid filled while running in to the hole to meet BLM minimum collapse requirements. The intermediate casing will be cemented in 2 or 3 stages using DV/STAGE tools in order to reduce cement losses and maximize cement coverage. Operator proposes optional DV tools and optional ICP's above anticipated loss circulation zones in the Mesaverde and in the Fruitland coal. If losses are not observed during the second stage a cancelation plug will be pumped and the remaining cement will be pumped during stage 2. If cement does not circulate to the DV tool(s) or to surface, a CBL will be run to determine

Intermediate - 9-5/8"	Top	Footage	Cement (ft3/ft) Annular Capacity	Excess (30%)	Total (ft3)	Total (bbl)	Slurry Yield (ft3/sk)	Sacks Cement	Density (PPG)
Stage 1 Tail	5,832	500	0.3132	1.3	220	39	1.160	190	15.8
Stage 1 Lead	4,742	1,090	0.3132	1.3	444	79	2.665	167	11.8
					664	118		356	
Stage 2 Tail	4,142	600	0.3132	1.3	244	44	1.760	139	13.5
Stage 2 Lead	3,365	777	0.3132	1.3	316	56	2.665	119	11.8
Stage 2 Lead - Cased	3,265	100	0.3627	1	36	6	2.665	14	11.8
Stage 2 Totals					597	106		271	
Int 2 Totals					1,261	225		627	
Contingency									
Stage 3 Tail	3,465	75	0.3132	1.3	31	5	1.760	17	13.5
Stage 3 Tail - Cased	2,965	500	0.3490	1	175	31	1.760	99	13.5
Stage 3 Lead - Cased	-	2,965	0.3490	1	1,035	184	2.660	389	12.5
Contingency Stage 3 Totals					1,240	221		506	

Set Depth 6332



TOC. Calculations based on 30% excess for open hole and cement to surface. Actual excess pumped will be determined by well conditions.

- 4. **PRODUCTION:** Casing will be cemented in 1 stage with 100' of cement overlap above intermediate shoe. A CBL, or alternatively, a Temperature Survey will be used to determine TOC.

Production - 5-1/2"	Top	ft	Cement (ft3/ft) Annular Capacity	Excess (15%)	Total (ft3)	Total (bbl)	Slurry Yield (ft3/sk)	Sacks Cement	Density (PPG)
Cased Lead	6,232	100	0.2531	1	25	5	1.98	13	13.2
Open Hole Lead	6,332	10,334	0.2291	1.15	2,728	486	1.98	1,378	13.2
					2,753	490		1,390	

Set depth 16666

Calculations based on 15% excess for open hole and 100' overlap into intermediate casing. Actual volumes will vary.

Cement calculations are used for volume estimation. Well conditions will dictate final cement job design. Actual volumes will be calculated and determined by conditions onsite. All cement slurries will meet or exceed minimum BLM and New Mexico Oil Conservation Division requirements. Slurries used will be the slurries listed above or equivalent slurries depending on service provider selected. Cement yields may change depending on slurries selected. All waiting on cement times shall be a minimum of 8 hours or adequate to achieve a minimum of 500 psi compressive strength at the casing shoe prior to drilling out.

IV. COMPLETION

A. CBL

CBLs and/or Temperature Surveys will be performed as needed or required to determine cement top if cement is not circulated.

B. PRESSURE TEST

- C. Pressure test 5-1/2" casing to 0.22 psi/ft * 7,062' TVD = 1554 psi for 30 minutes. Increase pressure to Open RSI sleeves.

D. STIMULATION

Stimulate with sand and water. Isolate stages with flow through or dissolvable frac plugs. Drill out frac plugs and flowback lateral.

E. PRODUCTION TUBING

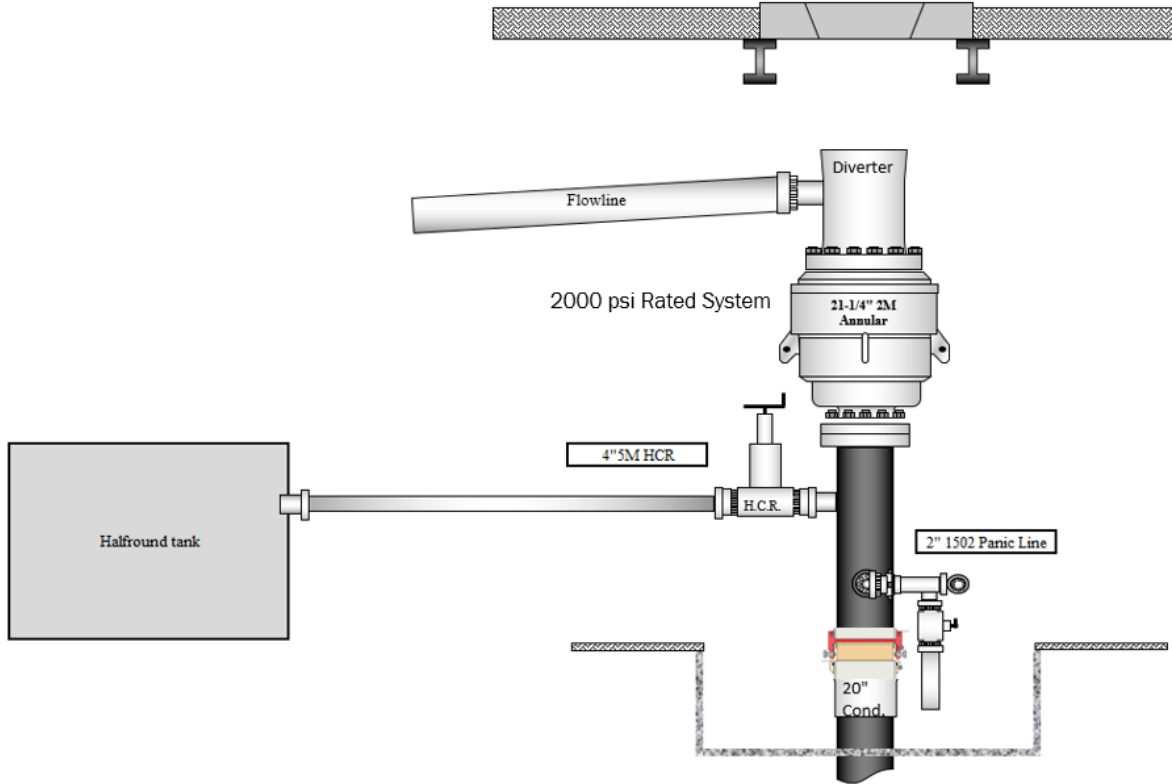
2-7/8", 6.5#, J-55 or L-80, EUE tubing will be run once volumes and pressures dictate. Due to the extremely high initial flow rates and pressures seen in offset wells, tubing will be installed once it is safe to do so, typically 12-36 months after completion.

*NOTE: Although this horizontal well may be drilled past the applicable setbacks, an unorthodox location application is not required because the completed interval in this well, as defined by 19.15.16.7 8(1) NMAC, will be entirely within the applicable setbacks. This approach complies with all applicable rules, including 19.15.16.14 A(3) NMAC, 19.15.16.14 8(2) NMAC, 19.15.16.15 8(2)NMAC, and 19.15.16.15. 8(4) NMAC.



BOP Equipment

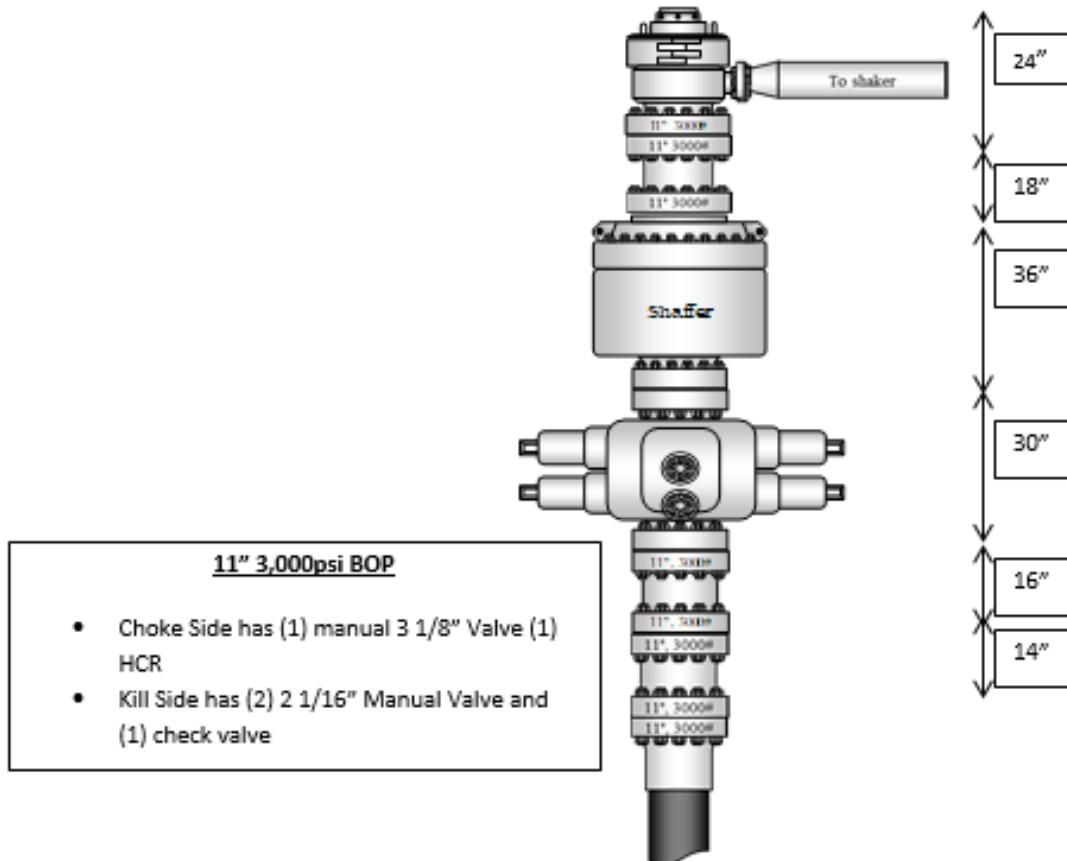
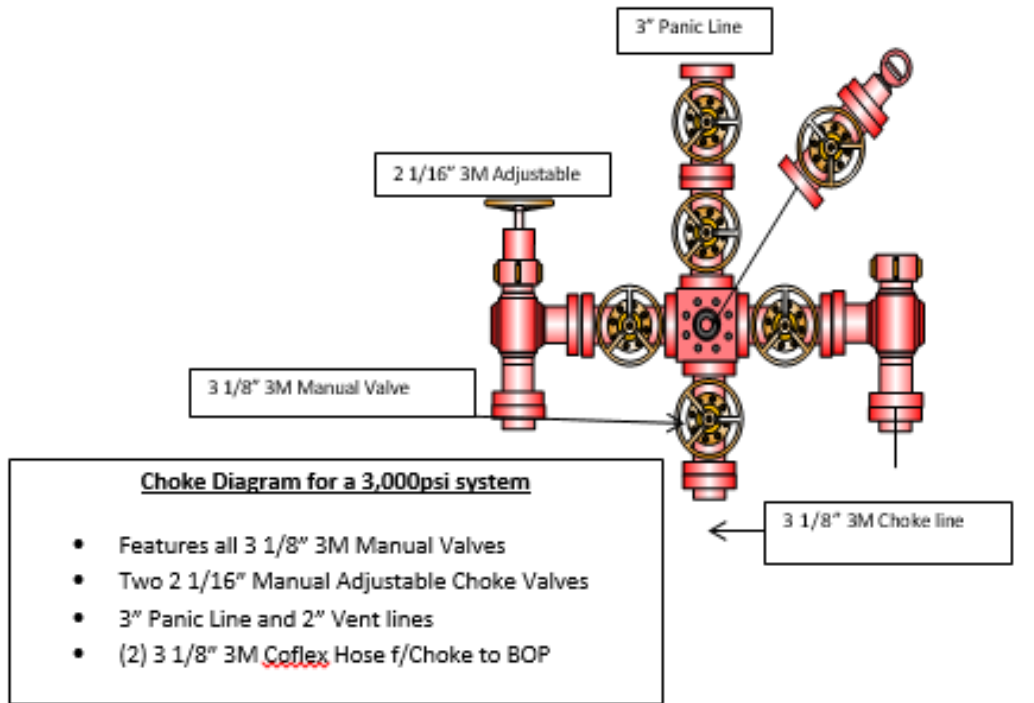
Surface Hole Diverter:





BOP:

3M 11" B.O.P.E Diagram



Sante Fe Main Office
Phone: (505) 476-3441

General Information
Phone: (505) 629-6116

Online Phone Directory
<https://www.emnrd.nm.gov/ocd/contact-us>

State of New Mexico
Energy, Minerals and Natural Resources
Oil Conservation Division
1220 S. St Francis Dr.
Santa Fe, NM 87505

CONDITIONS

Action 442298

CONDITIONS

Operator: LOGOS OPERATING, LLC 2010 Afton Place Farmington, NM 87401	OGRID: 289408
	Action Number: 442298
	Action Type: [C-103] NOI Change of Plans (C-103A)

CONDITIONS

Created By	Condition	Condition Date
ward.rikala	Any previous COA's not addressed within the updated COA's still apply.	3/28/2025