

<b>Well Name:</b> NAGEEZI	<b>Well Location:</b> T24N / R9W / SEC 33 / SESW / 36.266174 / -107.797546	<b>County or Parish/State:</b> SAN JUAN / NM
<b>Well Number:</b> 1	<b>Type of Well:</b> OIL WELL	<b>Allottee or Tribe Name:</b>
<b>Lease Number:</b> NMSF078862A	<b>Unit or CA Name:</b>	<b>Unit or CA Number:</b>
<b>US Well Number:</b> 300450508900S1	<b>Operator:</b> DUGAN PRODUCTION CORPORATION	

**Subsequent Report**

**Sundry ID:** 2840042

**Type of Submission:** Subsequent Report

**Type of Action:** Plug and Abandonment

**Date Sundry Submitted:** 03/04/2025

**Time Sundry Submitted:** 04:14

**Date Operation Actually Began:** 01/29/2025

**Actual Procedure:** Dugan Production Corp. P&A'd the well on 01/29/2025 - 02/05/2025 per the attached procedure.

**SR Attachments**

**Actual Procedure**

Nageezi\_1\_BLM\_OCD\_apvd\_plug\_changes\_20250304161100.pdf

Nageezi\_1\_SR\_PA\_formation\_tops\_20250304161033.pdf

Nageezi\_1\_SR\_PA\_completed\_wellbore\_schematic\_20250304161025.pdf

Nageezi\_1\_SR\_PA\_completed\_work\_20250304161014.pdf

Well Name: NAGEEZI

Well Location: T24N / R9W / SEC 33 /  
SESW / 36.266174 / -107.797546

County or Parish/State: SAN  
JUAN / NM

Well Number: 1

Type of Well: OIL WELL

Allottee or Tribe Name:

Lease Number: NMSF078862A

Unit or CA Name:

Unit or CA Number:

US Well Number: 300450508900S1

Operator: DUGAN PRODUCTION  
CORPORATION

### Operator

I certify that the foregoing is true and correct. Title 18 U.S.C. Section 1001 and Title 43 U.S.C. Section 1212, make it a crime for any person knowingly and willfully to make to any department or agency of the United States any false, fictitious or fraudulent statements or representations as to any matter within its jurisdiction. Electronic submission of Sundry Notices through this system satisfies regulations requiring a

Operator Electronic Signature: TYRA FEIL

Signed on: MAR 04, 2025 04:11 PM

Name: DUGAN PRODUCTION CORPORATION

Title: Authorized Representative

Street Address: PO Box 420

City: Farmington

State: NM

Phone: (505) 325-1821

Email address: tyrafeil@duganproduction.com

### Field

Representative Name: Aliph Reena

Street Address: PO Box 420

City: Farmington

State: NM

Zip: 87499-0420

Phone: (505)360-9192

Email address: Aliph.Reena@duganproduction.com

### BLM Point of Contact

BLM POC Name: MATTHEW H KADE

BLM POC Title: Petroleum Engineer

BLM POC Phone: 5055647736

BLM POC Email Address: MKADE@BLM.GOV

Disposition: Accepted

Disposition Date: 03/05/2025

Signature: Matthew Kade

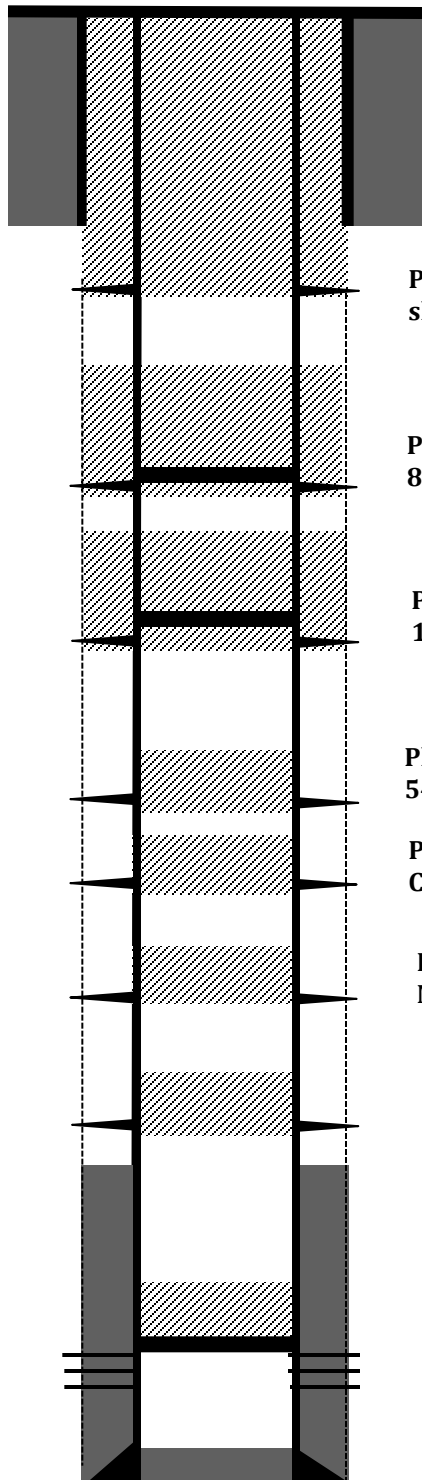
Dugan Production P&A'd the well on 01/29/2025-02/05/2025 per the following procedure:

- MI & RU Aztec Rig 481 and cement equipment.
- *Check pressures, Tubing 280 psi, Casing 280 psi, BH 0 psi.*
- LD rods & 2-3/8" production tubing.
- PU & tally 2-3/8" workstring. Run 5½" sting mill for casing scrapper to 4962'.
- RIH & set 5½" CIBP @ 4889'. Gallup perforations @ 4939'-5046'.
- Load and circulate hole w/150 bbls water. Circulated hole clean.
- **Attempt to pressure test casing to 650 psi for 30 minutes. Casing tested good. Test passed.**
- *Check pressures, Tubing 0 psi, Casing 300 psi, BH 0 psi.*
- Run CBL from 4885' to surface. Sent copy of CBL to NMOCD/BLM. Copy of communications attached.
- **Plug I:** Spot Plug I inside 5½" casing from 4889' on top of the CIBP w/24 sks (27.6 cu ft) Class G cement to cover the Gallup top & perforations. Displaced w/18.1 bbls. WOC overnight. Tagged TOC at 4700'. Good tag. **Plug I, Inside 5½" casing, 24 sks, 27.6 cu ft, CIBP at 4889', Gallup top-perforations, 4700'-4889'.**
- *Check pressures, Tubing 0 psi, Casing 0 psi, BH 0 psi.*
- **Plug II:** RU WL & Shoot squeeze holes at 3988'. Attempt to get an injection rate through perforations. Cannot get a rate through squeeze holes. Locked up to 1100 psi. RIH open ended to 4052'. Spot Plug II inside 5½" casing from 4052' w/30 sks, 34.5 cu ft Class G cement to cover the Mancos top. Displaced w/14.6 bbls. WOC 4 hrs. Tagged TOC at 3806'. Good tag. **Plug II, Inside 5½" casing, Perforations at 3988', 30 sks, 34.5 cu ft, Mancos, 3806'-4052'.**
- **Plug III:** RU WL & shoot squeeze holes at 2680'. Attempt to get an injection rate through perforations. Cannot get a rate through squeeze holes. Locked up to 1100 psi. TIH open ended to 2735'. Spot Plug III inside 5½" casing from 2735' w/30 sks, 34.5 cu ft Class G cement to cover the Mesaverde top. Displaced w/9.5 bbls. WOC overnight. Tagged TOC at 2493'. Good tag. **Plug III, Inside 5½" casing, Perforations at 2680', 30 sks, 34.5 cu ft, Mesaverde, 2493'-2735'.**
- *Check pressures, Tubing 0 psi, Casing 0 psi, BH 0 psi.*
- **Plug IV:** RU WL & shoot squeeze holes at 2222'. Attempt to get an injection rate through perforations. Cannot get a rate through squeeze holes. Locked up 1100 psi. TIH open ended to 2272'. Spot Plug IV inside 5½" casing from 2272' w/30 sks, 34.5 cu ft Class G cement to cover the Chacra lower top. Displaced w/7.8 bbls. WOC 4 hrs. Tagged TOC at 2003'. Good tag. **Plug IV, Inside 5½" casing, Perforations at 2222', 30 sks, 34.5 cu ft, Chacra lower, 2003'-2272'.**
- **Plug V:** RU WL & Shoot squeeze holes at 1895'. Attempt to get an injection rate through perforations. Establish rate at 1.1 bpm at 450 psi. RIH and set 5½" cement retainer at 1850'. Spot Plug V inside/outside 5½" casing from 1895 w/54 sks, 62.1 cu ft Class G cement to cover the Chacra Upper top. 31 sks – 35.7 cu ft outside casing, 5 sks-5.8 cu ft, below the retainer, 18 sks-20.7 cu ft cement on top of the retainer. Displaced w/5.9 bbls. WOC overnight. Tagged TOC at 1698'. Good tag. **Plug V, Inside/Outside 5½" casing, Perforations at 1895', CR at 1850', 54 sks, 62.1 cu ft, Chacra Upper, 1698'-1841'.**
- *Check pressures, Tubing 0 psi, Casing 0 psi, BH 0 psi.*

- **Plug VI:** RU WL & shoot squeeze holes at 1500'. Attempt to get an injection rate through perforations. Establish rate at 2.5 bpm at 500 psi. RIH and set 5½" cement retainer at 1452'. Sting inside CR. Spot Plug VI inside/outside 5½" casing from 1452' w/96 sks, 110.4 cu ft Class G cement. Displaced w/5.6 bbls to cement retainer. Sting out of the CR. Spot 50 sks, 57.5 cu ft Class G neat cement on top of the cement retainer to cover the Pictured Cliffs & Fruitland tops. Displaced w/3.9 bbls. WOC 4 hrs. Tagged TOC at 1065'. Good tag. **Plug VI, Inside/Outside 5½" casing, Perforations at 1500', CR at 1452', 146 sks, 167.9 cu ft, Pictured Cliffs-Fruitland, 1065'-1500'.**
- **Plug VII:** RU WL & shoot squeeze holes at 868'. Attempt to get an injection rate through perforations. Establish rate at 1 bpm at 550 psi. RIH and set 5½" cement retainer at 824'. Spot Plug VII inside/outside 5½" casing from 868' w/100 sks, 115 cu ft Class G cement to cover the Kirtland & Ojo Alamo tops. 60 sks-69 cu ft outside casing, 5 sks -5.75 cu ft below the retainer, 35 sks - 40.3 cu ft above the retainer inside casing. Displaced w/1.5 bbls. WOC overnight. Tagged TOC at 518'. Good tag. **Plug VII, Inside/Outside 5½" casing, perforations at 868', CR at 824', 114 sks, 131.1 cu ft, Kirtland-Ojo Alamo, 597'-868'.**
- **Plug VIII:** RU WL & Shoot squeeze holes at 446'. Attempt to get an injection rate through perforations. Establish rate at 2.5 bpm at 50 psi. Swap to cement. Spot & squeeze Plug VIII inside/outside 5½" casing from 446' to surface w/220 sks (253 cu ft) Class G cement to cover the surface casing shoe to surface. Circulated cement to surface. No displacement. WOC 4 hrs. Cut wellhead off. Tagged TOC at 4' inside 5½" casing & 6' inside the annulus. Good tag. **Plug VIII, Inside/Outside 5½" casing, Perforations at 446', 220 sks, 253 cu ft, Surface, 0'-446'.**
- Install dryhole marker & fill up cellar w/28 sks, 32.2 cu ft Class G neat cement. Clean location. RD Aztec 481. Joseph Maestas w/BLM witnessed job.
- **Well P&A'd 02/05/2025.**

**Completed P & A Schematic**

Nageezi #1  
API: 30-045-05089  
Sec 33 T24N R09W  
1120' FSL & 1520' FWL  
San Juan County, NM  
Lat: 36.266202, Long: -107.798159



10-3/4" H-40 32.75# casing @ 396'. Cemented with 400 sks.

**Plug VIII, Inside/Outside 5 1/2" casing, Perforations at 446', 220 sks, 253 Cu.ft, Surface, 0'-446'**

**Plug VII, Inside/Outside 5 1/2" casing, perforations at 868', CR at 824', 114 sks, 131.1 Cu.ft, Kirtland-Ojo Alamo, 597'-868'**

**Plug VI, Inside/Outside 5 1/2" casing, Perforations at 1500', CR at 1452', 146 sks, 167.9 Cu.ft, Pictured Cliffs-Fruitland, 1065'-1500'**

**Plug V, Inside/Outside 5 1/2" casing, Perforations at 1895', CR at 1850', 54 sks, 62.1 Cu.ft, Chacra Upper, 1698'-1841'**

**Plug IV, Inside 5 1/2" casing, Perforations at 2222', 30 sks, 34.5 Cu.ft, Chacra lower, 2003'-2272'**

**Plug III, Inside 5 1/2" casing, Perforations at 2680', 30 sks, 34.5 Cu.ft, Mesaverde, 2493'-2735'**

**Plug II, Inside 5 1/2" casing, Perforations at 3988', 30 sks, 34.5 Cu.ft, Mancos, 3806'-4052'**

Cemented w/ 200 sks 50-50 Poz

**CIBP @ 4889'. Plug I, Inside 5 1/2" casing, 24 sks, 27.6 Cu.ft, CIBP at 4889', Gallup top-perforations, 4700'-4889**

**Gallup Perforated @ 4939'-5046'**

**5 1/2" 15.5 # casing @ 5125'**

**Nageezi #1**

API: 30-045-05089

Sec 33 T24N R09W

1120' FSL & 1520' FWL

San Juan County, NM

Lat: 36.266202, Long: -107.798159

**Elevation ASL RKB : 6902'**

**Formation Tops (Referenced for P & A)**

- **Surface Casing - 396'**
- **Ojo Alamo - 697'**
- **Kirtland - 818'**
- **Fruitland - 1175'**
- **Pictured Cliffs - 1450'**
- **Lewis - 1525'**
- **Chacra Upper - 1845'**
- **Chacra Lower - 2172'**
- **Mesaverde - 2630'**
- **Mancos - 3944'**
- **Gallup - 4935'**
- **Gallup Perfs - 4939'-5043'**

## Tyra Feil

---

**From:** Kuehling, Monica, EMNRD <monica.kuehling@emnrd.nm.gov>  
**Sent:** Monday, February 3, 2025 11:21 AM  
**To:** Rennick, Kenneth G; Aliph Reena; Maestas, Joseph I; Lucero, Virgil S; Porch, Dustin T; Kade, Matthew H  
**Cc:** Tyra Feil; Omar Ramirez; Alex Prieto-Robles  
**Subject:** RE: [EXTERNAL] RE: Dugan Nageezi #1 CBL

CAUTION: This email originated from outside your organization. Exercise caution when opening attachments or clicking links, especially from unknown senders.

NMOCD approves below

Thank you

Monica Kuehling  
Compliance Officer Supervisor  
Deputy Oil and Gas Inspector  
New Mexico Oil Conservation Division  
North District  
Cell Phone: 505-320-0243  
Email - monica.kuehling@emnrd.nm.gov

---

**From:** Rennick, Kenneth G <krennick@blm.gov>  
**Sent:** Monday, February 3, 2025 11:21 AM  
**To:** Aliph Reena <Aliph.Reena@duganproduction.com>; Maestas, Joseph I <jimaestas@blm.gov>; Lucero, Virgil S <vlucero@blm.gov>; Porch, Dustin T <dporch@blm.gov>; Kade, Matthew H <mkade@blm.gov>; Kuehling, Monica, EMNRD <monica.kuehling@emnrd.nm.gov>  
**Cc:** Tyra Feil <Tyra.Feil@duganproduction.com>; Omar Ramirez <oramirez@aztecwell.com>; Alex Prieto-Robles <arobles@aztecwell.com>  
**Subject:** Re: [EXTERNAL] RE: Dugan Nageezi #1 CBL

The BLM finds the procedure appropriate.

Kenneth (Kenny) Rennick

Petroleum Engineer

Bureau of Land Management  
Farmington Field Office  
6251 College Blvd  
Farmington, NM 87402

Email: [krennick@blm.gov](mailto:krennick@blm.gov)  
Mobile & Text: 505.497.0019

---

**From:** Aliph Reena <[Aliph.Reena@duganproduction.com](mailto:Aliph.Reena@duganproduction.com)>  
**Sent:** Monday, February 3, 2025 11:15 AM  
**To:** Maestas, Joseph I <[jimaestas@blm.gov](mailto:jimaestas@blm.gov)>; Rennick, Kenneth G <[krennick@blm.gov](mailto:krennick@blm.gov)>; Lucero, Virgil S <[vlucero@blm.gov](mailto:vlucero@blm.gov)>;  
Porch, Dustin T <[dporch@blm.gov](mailto:dporch@blm.gov)>; Kade, Matthew H <[mkade@blm.gov](mailto:mkade@blm.gov)>; Kuehling, Monica, EMNRD  
<[monica.kuehling@emnrn.nm.gov](mailto:monica.kuehling@emnrn.nm.gov)>  
**Cc:** Tyra Feil <[Tyra.Feil@duganproduction.com](mailto:Tyra.Feil@duganproduction.com)>; Omar Ramirez <[oramirez@aztecwell.com](mailto:oramirez@aztecwell.com)>; Alex Prieto-Robles  
<[arobles@aztecwell.com](mailto:arobles@aztecwell.com)>  
**Subject:** [EXTERNAL] RE: Dugan Nageezi #1 CBL

**This email has been received from outside of DOI - Use caution before clicking on links, opening attachments, or responding.**

**Re: Dugan Production Corp.**  
**API: 30-045-05089**  
**Well Name: Nageezi # 1**

From the CBL, the good cement runs out at 4350'. There seem a few stringers of cement or dried up drilling mud from the CBL.

Based on the CBL, the following changes are requested.

1. **Plug II, Mancos:** Change from inside plug to inside/outside plug. Perforate at 3994'. Do inside/outside plug from 3994' to 3844' to cover the Mancos top.

All other plugs above Mancos will be inside/outside plugs as proposed in the original approved NOI. If a rate cannot be established through the squeeze holes, we request permission to do inside plugs.

Please let us know if the revised proposal is acceptable to BLM & NMOCD and we will proceed accordingly.

Aliph Reena  
505-360-9192

Aliph Reena  
**Engineering Supervisor**  
Dugan Production Corp.  
Cell: 505-360-9192

---

**From:** Alex Prieto-Robles <[arobles@aztecwell.com](mailto:arobles@aztecwell.com)>  
**Sent:** Thursday, January 30, 2025 1:16 PM  
**To:** Aliph Reena <[Aliph.Reena@duganproduction.com](mailto:Aliph.Reena@duganproduction.com)>



Sante Fe Main Office  
Phone: (505) 476-3441

General Information  
Phone: (505) 629-6116

Online Phone Directory  
<https://www.emnrd.nm.gov/ocd/contact-us>

**State of New Mexico**  
**Energy, Minerals and Natural Resources**  
**Oil Conservation Division**  
**1220 S. St Francis Dr.**  
**Santa Fe, NM 87505**

CONDITIONS

Action 439212

**CONDITIONS**

Operator: DUGAN PRODUCTION CORP PO Box 420 Farmington, NM 87499	OGRID: 6515
	Action Number: 439212
	Action Type: [C-103] Sub. Plugging (C-103P)

**CONDITIONS**

Created By	Condition	Condition Date
mkuehling	CBL in log file - Well plugged 2/5/2025	4/2/2025