

Santa Fe Main Office  
Phone: (505) 476-3441  
General Information  
Phone: (505) 629-6116

State of New Mexico  
Energy, Minerals and Natural Resources

Form C-103  
Revised July 18, 2013

Online Phone Directory Visit:  
<https://www.emnrd.nm.gov/ocd/contact-us/>

OIL CONSERVATION DIVISION  
1220 South St. Francis Dr.  
Santa Fe, NM 87505

<b>SUNDRY NOTICES AND REPORTS ON WELLS</b> (DO NOT USE THIS FORM FOR PROPOSALS TO DRILL OR TO DEEPEN OR PLUG BACK TO A DIFFERENT RESERVOIR. USE "APPLICATION FOR PERMIT" (FORM C-101) FOR SUCH PROPOSALS.) 1. Type of Well: Oil Well <input checked="" type="checkbox"/> Gas Well <input type="checkbox"/> Other <input type="checkbox"/>		WELL API NO. <b>30-025-26426</b> 5. Indicate Type of Lease STATE <input checked="" type="checkbox"/> FEE <input type="checkbox"/> 6. State Oil & Gas Lease No. <b>332786</b>
2. Name of Operator <b>Energy Acumen LLC</b>		7. Lease Name or Unit Agreement Name <b>El Paso Plant #001</b> 8. Well Number <b>001</b>
3. Address of Operator <b>10103 Gutierrez Rd NE Albuquerque, NM 87111</b>		9. OGRID Number <b>373817</b>
4. Well Location Unit Letter <b>L</b> : 1950 feet from the <b>South</b> line and <b>660</b> feet from the <b>West</b> line Section <b>32</b> Township <b>23S</b> Range <b>37E</b> NMPM County <b>Lea</b>		10. Pool name or Wildcat <b>[79240] JALMAT; TAN-YATES-7 RVRS</b>
11. Elevation (Show whether DR, RKB, RT, GR, etc.) <b>GL Elevation: 3306</b>		

12. Check Appropriate Box to Indicate Nature of Notice, Report or Other Data

NOTICE OF INTENTION TO:		SUBSEQUENT REPORT OF:	
PERFORM REMEDIAL WORK <input type="checkbox"/>	PLUG AND ABANDON <input type="checkbox"/>	REMEDIAL WORK <input type="checkbox"/>	ALTERING CASING <input type="checkbox"/>
TEMPORARILY ABANDON <input type="checkbox"/>	CHANGE PLANS <input type="checkbox"/>	COMMENCE DRILLING OPNS. <input type="checkbox"/>	P AND A <input checked="" type="checkbox"/>
PULL OR ALTER CASING <input type="checkbox"/>	MULTIPLE COMPL <input type="checkbox"/>	CASING/CEMENT JOB <input type="checkbox"/>	
DOWNHOLE COMMINGLE <input type="checkbox"/>			
CLOSED-LOOP SYSTEM <input type="checkbox"/>			
OTHER: <input type="checkbox"/>		OTHER: <input type="checkbox"/>	

13. Describe proposed or completed operations. (Clearly state all pertinent details, and give pertinent dates, including estimated date of starting any proposed work). SEE RULE 19.15.7.14 NMAC. For Multiple Completions: Attach wellbore diagram of proposed completion or recompletion.

Please refer to the attached Plug and Abandonment End of Well Report.

Spud Date:

Rig Release Date:

I hereby certify that the information above is true and complete to the best of my knowledge and belief.

SIGNATURE \_\_\_\_\_ TITLE **SGWS Legacy PM** DATE **04/03/2025**  
 Type or print name **Samantha Baker** E-mail address: **samantha.d.baker@shell.com** PHONE **970-274-3411**  
**For State Use Only**

APPROVED BY: \_\_\_\_\_ TITLE \_\_\_\_\_ DATE \_\_\_\_\_  
 Conditions of Approval (if any): \_\_\_\_\_

**LANGAN****Technical  
Memorandum**

---

**300 Union Boulevard, Suite 405 Lakewood, CO 80228 T: 303.262.2000 F: 303.262.2001**

---

**To:** NMOCD  
**From:** Langan  
**Info:** Shell  
**Date:** February 28, 2025  
**Re:** Plug and Abandonment – End of Well Report  
El Paso Plant #001 / API 30-025-26426  
Section 32, Township 23S, Range 37E  
Langan Project No.: 781019001

---

**Work Summary:**

**01/15/25** – Began loading and hauling rig and equipment for travel to El Paso #001. Rig developed transmission shifting problems, waited on mechanic with plans for rig to resume travel on 1/16/25. Offloaded rig base beam, pipe racks and 2.375" workstring. SDFN.

**01/16/25** - Mechanics continued working on rig at Hobbs yard while crew arrived on location. Conducted PJSM discussing trapped pressure, H2S awareness, and JSA review. Inspected equipment and work areas, checked WHP with SITP 20 psi, SICP 20 psi. Opened tbg, vented to atmosphere, RU pump to 5.5" csg valve, vented to tank. Pumped 20 bbls FW down 5.5" x 2.375" annulus while 2 3/8" tbg continued to vent gas and 5.5" annulus was on vacuum, indicating likely tbg in well. Monitored well. Lined up pump to BOP, attempted to stump pressure test 7 1/16" 5K dbl ram BOP but observed leak at flange connection, waited on wrench from Hobbs. Lined up pump to tbg, pumped 20 bbls FW down tbg (vacuum), monitored well, confirmed 0 psi on 8 5/8" x 5 1/2" annulus. Removed plumbing from Braden head, installed dual barrier ball valves with tap bull plug & 1/2" plug on one side and tap bull plug & 1/2" plug w/ ball valve on opposite side of Braden Head. Added one ball valve and nipple w/ tap bull plug & 1/2" plug to one side of the 5 1/2" Larkin head and a tap bull plug w/ 1/2" plug to the opposite side. Completed dual barriers at all wellhead outlets. Lined up pump to BOP, stump tested BOP blind rams at 270 psi for 5 minutes and 800 psi for 5 minutes, pipe rams at 348 psi for 5 minutes and 800 psi for 5 minutes - good. Spotted pipe wrangler and open top roll off, secured well. SDFN.

# Technical Memorandum

Plug and Abandonment – End of Well Report  
El Paso Plant #001 / API 30-025-26426  
Section 32, Township 23S, Range 37E  
Langan Project No.: 781019001  
February 28, 2025 - Page 2 of 6

**01/17/25 - 01/19/25** – Continued NPT due to WOR transmission failure. NPT paused and resumed over three-day period.

**01/20/25** – Ended NPT due to WOR transmission failure. Began NPT to determine potential onsite buried lines status. WOR arrived on location, spotted rig off location. Continued NPT. Rig mats arrived onsite, offloaded rig mats. SDFN, paused NPT.

**01/21/25** – Resumed NPT to determine potential onsite buried lines status. SDFN, paused NPT.

**01/22/25** – Arrived onsite, conducted PJSM discussing LSRs, 7 Step Pause, LOF, documented inspections, and JSA review. Inspected equipment and work areas. Began moving equipment to revised, approved WOR pad layout. Began NPT due to 10K forklift. Ended NPT due to FL, began NPT due to bucket loader. Replacement loader arrived onsite, ended NPT, backfilled cellar area for rig base beam. Spotted base beam and WOR, RU WOR. Spotted catwalk, open top tank, stump test skid and cement pump truck. Attempted to stump test 7 1/16" 5K dbl ram BOP, blind rams low range pressure test unsuccessful due to internal leak. Began NPT, removed blind rams, replaced damaged rubbers, attempted pressure test - failed. SDFN.

**01/23/25** – Arrived on location, conducted PJSM. Inspected equipment and work areas, checked WHP with SITP & SICP 30 psi, opened well to open top tank, bled to 0 psi w/ constant venting. Resumed NPT for BOP, attempted to MU test pup jt onto test stump but found ice plug in 5.5" test stump. ND BOP from 5.5" stump, swapped wellheads, MU 4.5" wellhead, NU BOP to 4.5" stump, MU 2.375" test pup jt. Attempted to low test pipe rams - failed, replaced 2" 2K ball valve on BOP, attempted low test - failed, replaced valve on pump line. Ended NPT, attempted low test on pipe rams at 250 psi for 5 minutes - good. Removed test pup jt, attempted pressure test on blind rams at 350 psi for 5 min and 1770 psi for 5 minutes - good. RD pump lines from stump, RU to kill well. Pumped 20 bbls FW (1,100' fluid column) down 5.5" x 2.375" annulus w/ 20 psi at 2 bpm (vacuum), pumped 4.5 bbls FW (1,100' fluid column) down 2.375" production tbg w/ 0 psi at 4 bpm (vacuum). Monitored well. SITP & SICP 0 psi, tbg vacuum, csg venting gas. Bullheaded 60 bbls FW (volume to bottom perf 3172') down annulus w/ 0 psi at 4 bpm - vacuum, bullheaded 12 bbls FW (volume to bottom perf 3172') down tbg w/ 0 psi at 3.7 bpm - vacuum. Monitored well. Began to trickle FW down annulus, broke down wellhead, removed 2.375" plunger lift

**LANGAN**

# Technical Memorandum

Plug and Abandonment – End of Well Report  
El Paso Plant #001 / API 30-025-26426  
Section 32, Township 23S, Range 37E  
Langan Project No.: 781019001  
February 28, 2025 - Page 3 of 6

lubricator & master wing valve, MU lift pup jt w/ 2 3/8" FOSV, removed 8 5/8" wellhead cap, removed wellhead packing from hanger, un-landed tbg hanger w/o issue at 13,000 # (est string wgt 14K to top perf), PU on tbg to confirm moving freely and tbg size at 2 3/8", landed hanger. Removed lift pup jt, MU 8 5/8" 3K (6 3/8" max ID) threaded flange onto wellhead, hanger OD 7" +/-, removed flange. MU wellhead packing and 8 5/8" cap, MU TIW w/ nightcap, needle valve & 1/2" plug into 2 3/8" 8 RD on hanger, secured location. SDFN.

**01/24/25** – Arrived on location, conducted PJSM. Inspected equipment and work areas, checked WHP with SITP & SICP 30 psi, 8 5/8" x 5 1/2" = 0 psi, opened well to open top tank to vent. Began NPT due to ice in stump for BOP test, thawed pump truck lines w/ hose from exhaust. Ended NPT, pressure tested 7 1/16" 5K dbl ram BOP pipe rams to 1800 psi for 5 minutes - good (low test done on 1/23/24). Lined up pump to kill well, bullheaded 60 bbls FW down 5 1/2" x 2 3/8" annulus w/ 50 psi at 4 bpm (vacuum), bullheaded 12 bbls FW down 2 3/8" tbg w/ 60 psi at 5 bpm (vacuum). Monitored well, respotted pump truck, spotted pipe racks. RU pump truck & water transport, began to break down wellhead, csg began to vent gas, secured well. Discussed with office to source flange with larger ID (7.25"), located flange that would allow hanger (7") to pass through, waited for 7.25" 3K flange to arrive onsite. Flange arrived onsite, pumped 5 bbls FW down csg w/ 20 psi at 6 bpm - vacuum, tbg venting gas, pumped 5 bbls down tbg w/ 0 psi at 0.5 bpm - vacuum, continued to trickle FW at 0.5 bpm down csg. Broke down wellhead, removed 8 5/8" cap & packing, MU 7.25" 3K x 8 5/8" threaded flange, NU BOP. Pressure tested BOP, 300 psi drop to 200 psi, 5 minutes - failed (no external leaks), 1800 psi leaked at threads, tightened threaded connection, 1800 psi drop to 1700 psi, 5 minutes - failed (no external leaks). RU workflow/tongs/handrails/slips, un-landed hanger, began trickling FW down csg. LD hanger & 10' x 2.875" pup jt, POOH w/ production tbg to racks while testing for NORM, pulled 50 jts total (est. 1600') w/ no NORM contamination. Secured well, SDFN.

**01/25/25** – Arrived on location, conducted PJSM discussing 7 Steps, Safety Critical equipment, JSA Review. Inspected equipment and work areas, checked WHP with SITP & SICP 30 psi, bled well to open top tank. Lined up pump to tbg, pumped 5 bbls FW w/ 60 psi at 4.5 bpm, lined up to csg, pumped 5 bbls FW down csg, began constant trickle down csg, POOH to racks w/ 2.375" production tbg while testing NORM. Total production string = 7" hanger w/ 10' pup, 95 jts &

# Technical Memorandum

Plug and Abandonment – End of Well Report  
El Paso Plant #001 / API 30-025-26426  
Section 32, Township 23S, Range 37E  
Langan Project No.: 781019001  
February 28, 2025 - Page 4 of 6

2.375" Seating Nipple (est. 3000'), no NORM contamination found, racked & tallied 2.375" workstring w/ tapered couplings. MU/PU 4.5" tricone bit w/ 5.5" Scraper, RIH w/ scraper BHA & workstring from racks, continued constant trickle FW, ran 93 jts to 2982' KB w/ no tag. LD jt #93, prepped to POOH w/ 92 jts (46 stands) to derrick, ran Geronimo Escape Line, set racking boards. POOH w/ workstring to derrick, LD scraper BHA. MU WFD 5.5" 4.312" OD CIBP, RIH w/ CIBP BHA and workstring from derrick, continued constant trickle FW, set CIBP at 2948.01' KB, stung out of plug. Lined up pump to forward circulate, pumped 61 bbls FW to break circulation, pumped 80 bbls total FW, annular vol = 54 bbls, tbg vol = 11.4 bbls, total hole vol = 65.4 bbls. POOH w/ workstring to derrick, LD BHA. Secured well, SDFN.

**01/26/25** – Arrived on location, conducted PJSM discussing overhead lifts, LSRs, JSA review. Inspected equipment and work areas, checked WHP = 0 psi, opened well. Lined up pump to 5.5" csg outlet valve, pumped 4.5 bbls FW to top off wellbore due to 2.375" pipe displacement (0.00171 bpf x 2948'). Installed digital gauge on 5.5" csg outlet valve, pressure tested 5.5" csg and CIBP to 500 psi for 5 minutes - passed. RU WLU, NU WL flange to rig BOP, MU/PU WL 5K single ram BOP, lubricator (25'), packoff & CBL BHA. Lined up pump to pressure test WL Lubricator against rig BOP blind rams, installed digital gauge, attempted low range test at 250 psi - failed (no external leaks), attempted high range test at 500 psi - failed (no external leaks). Opened BOP blind rams, began CBL down pass, tagged CIBP at 2949' KB WLM, applied 500 psi to wellbore, began CBL up pass to 2100', bled wellbore to 0 psi, continued up pass. Bumped up WL tools, LD CBL BHA, RD/LD WL PCE, ND WL flange, sent CBL log to office. RIH w/ 2.375" 8 RD workstring from derrick to 2947' KB to pump plug #1. Lined up pump to tbg, loaded wellbore w/ 1 bbl FW, circulated 5 bbls FW w/ 100 psi at 1.8 bpm. Began NPT to review/interpret CBL. Ended NPT, pumped cement plug #1, pumped 38 SKS (7.8 bbls) Type I/II cement w/1.18 yield @ 15.6 ppg w/ 60 psi at 1.8 bpm, pumped 9.8 bbls of FW displacement w/ 60 psi at 3.5 bpm, estimated plug from 2948' KB-2618' KB (330'). POOH w/ tbg (12 jts) to racks. POOH w/ tbg (40 jts) to derrick, EOT 1287' KB. Lined up pump to 5.5" csg outlet valve, reverse circulated 10 bbl FW w/ 50 psi at 4 bpm. Secured well SDFN.

**01/27/25** – Arrived on location, conducted PJSM discussing LOF, LOTO Try, JSA review. Inspected equipment and work areas, checked WHP = 0 psi, opened well. RIH w/ tbg from

**LANGAN**

# Technical Memorandum

Plug and Abandonment – End of Well Report  
El Paso Plant #001 / API 30-025-26426  
Section 32, Township 23S, Range 37E  
Langan Project No.: 781019001  
February 28, 2025 - Page 5 of 6

derrick, tagged TOC at 2602' KB (81 jts). Lined up pump to tbq to forward circulate Abandonment Fluid, pumped 2 bbls of FW w/ 150 psi at 2 bpm, pumped 33 bbls of 9 ppg 40 visc Abandonment fluid w/ 150 psi at 2.1 bpm, pumped 4.1 bbl FW disp. w/ 50 psi at 2.3 bpm, spacer from 2602'-1220'. POOH to racks w/ 43 jts of 2.375" workstring, EOT at 1220' KB (38 jts). Pumped cement plug #2, pumped 3 bbls FW w/ 20 psi at 1.8 bpm, pumped 19 SKS (3.9 bbls) Type I/II cement w/1.18 yield @ 15.6 ppg w/ 60 psi at 1.8 bpm, pumped 3.8 bbls of FW displacement w/ 40 psi at 3.4 bpm, estimated plug from 1220' KB-1055' KB (165' plug). POOH to racks w/ 6 jts, POOH to derrick w/ 16 stands (32 jts), WOC. RIH w/ workstring, tagged TOC at 1013' KB (32 jts, 12' out), LD 1 jt, EOT 994' (31 jts). Lined up pump to tbq to forward circulate Abandonment Fluid, pumped 2 bbls of FW w/ 60 psi at 1.9 bpm, pumped 5.8 bbls of 9 ppg 40 visc Abandonment fluid w/ 60 psi at 1.8 bpm, pumped 2.6 bbl FW disp. w/ 50 psi at 2 bpm, spacer from 1013'-750'. POOH to racks w/ 8 jts of 2.375" workstring, EOT at 750' KB (23 jts). Pumped cement plug #3, pumped 5 bbls FW w/ 50 psi at 2 bpm, pumped 32 SKS (6.7 bbls) Type I/II cement w/1.18 yield @ 15.6 ppg w/ 60 psi at 2 bpm, pumped 1.5 bbls of FW displacement w/ 60 psi at 2 bpm, estimated plug from 750' KB-468' KB (282' plug). POOH to racks w/ 9 jts of 2.375" workstring, POOH to derrick w/ 7 stands (14 jts). Closed blind rams, secured well, SDFN.

**01/28/25** – Arrived on location, conducted PJSM with JSA review. Inspected equipment and work areas, checked WHP = 0 psi. Began NPT due to transmission. Mechanic arrived onsite, ended NPT.

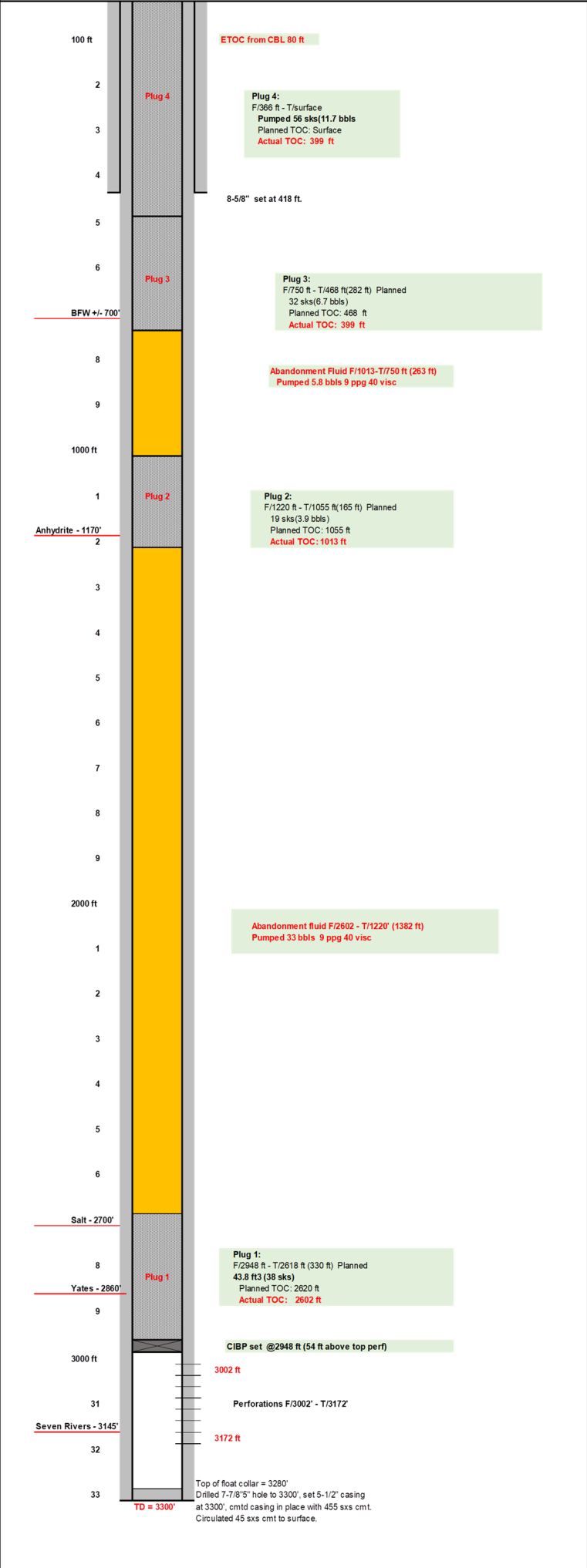
**01/29/25** – Arrived on location, resumed NPT for driveline, conducted PJSM discussing 7 Steps, JSA review. Inspected equipment and work areas, checked WHP = 0 psi. Mechanic arrived onsite. Driveline repairs completed, ended NPT. RIH w/ 2.375" workstring from derrick, tagged TOC at 399' KB (12 jts + 8'), LD jts #13 & #14, EOT 391' KB. Pumped cement plug #4, pumped 2 bbls FW w/ 60 psi at 2.1 bpm, pumped 56 SKS (11.7 bbls) Type I/II cement w/1.18 yield @ 15.6 ppg w/ 60 psi at 2 bpm, estimated plug from 399' KB-Surface (399' plug). POOH to racks w/ 11 jts, topped off well w/ cement, LD jt #12. RD workflow, tongs/slips/handrails. RD WOR. ND BOP, secured location, left well open to atmosphere.

# Technical Memorandum

Plug and Abandonment – End of Well Report  
El Paso Plant #001 / API 30-025-26426  
Section 32, Township 23S, Range 37E  
Langan Project No.: 781019001  
February 28, 2025 - Page 6 of 6

---

**02/20/25** – Arrived on location and conducted a safety meeting. Checked well pressures (0 psi). R/U welder on location. Performed WH cutoff. Cement was to surface in the 5.5" casing and 60' low in annulus. R/U cementing services and topped off the annulus. Welded on new-style NMOCD marker and topped off the Sonotube with cement. Langan's earthwork subcontractor used a backhoe to backfill. Prepared to MOL.







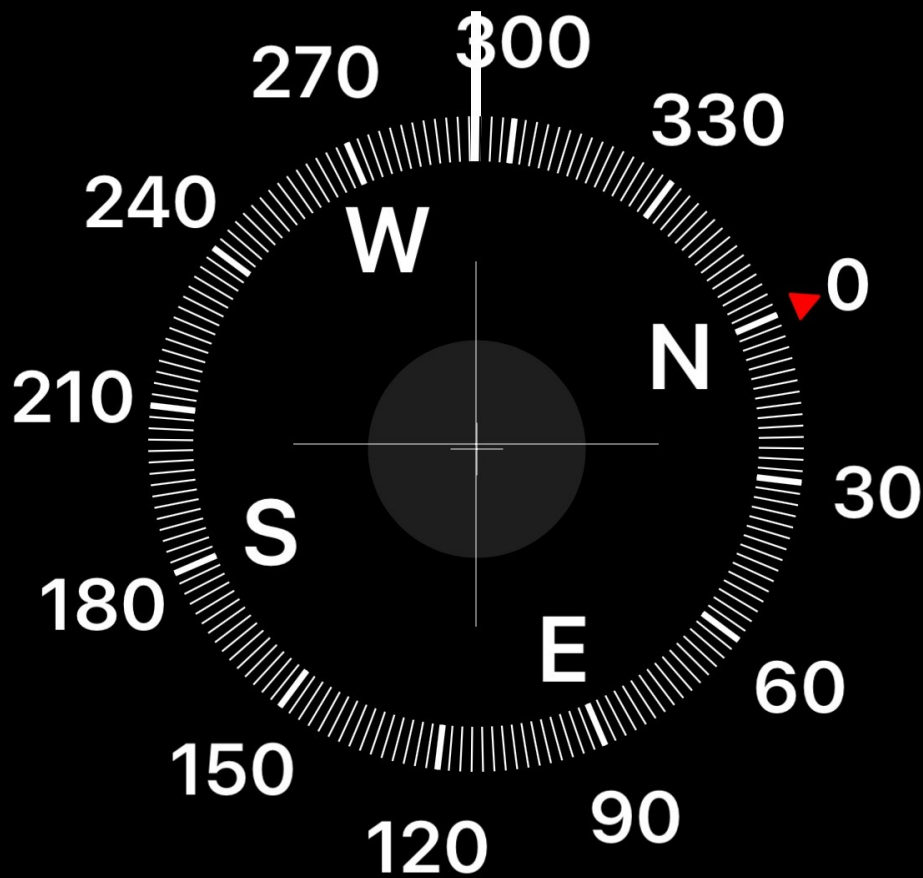






1000 1000





293° NW

32°15'30" N 103°11'29" W

Jal, NM

3310 ft Elevation

Sante Fe Main Office  
Phone: (505) 476-3441

General Information  
Phone: (505) 629-6116

Online Phone Directory  
<https://www.emnrd.nm.gov/ocd/contact-us>

State of New Mexico  
Energy, Minerals and Natural Resources  
Oil Conservation Division  
1220 S. St Francis Dr.  
Santa Fe, NM 87505

CONDITIONS

Action 449462

CONDITIONS

Operator: Energy Acumen LLC 10103 Gutierrez Rd NE Albuquerque, NM 87111	OGRID: 373817
	Action Number: 449462
	Action Type: [C-103] Sub. Plugging (C-103P)

CONDITIONS

Created By	Condition	Condition Date
loren.diede	None	4/8/2025