

DISTRICT I  
 1625 N French Dr, Hobbs, NM 88240  
 District II  
 811 S. First St., Artesia, NM 88210  
 District III  
 1000 Rio Brazos Rd., Aztec, NM 87410  
 District N  
 1220 S St. Francis Dr., Santa Fe, NM 87505

State of New Mexico  
 Energy, Minerals & Natural Resources

FonnC-104  
 Revised August 1, 2011

Oil Conservation Division  
 1220 South St. Francis Dr.  
 Santa Fe, NM 87505

Submit one copy to appropriate District Office

**O AMENDED REPORT**

**I. REQUEST FOR ALLOWABLE AND AUTHORIZATION TO TRANSPORT**

<sup>1</sup> Operator name and Address XTO Energy, Inc. 6401 HOLIDAY IDLL ROAD BLDG 5 MIDLAND, TX 79707		<sup>2</sup> OGRID Number 373075
		<sup>3</sup> Reason for Filing Code/ Effective Date NW
<sup>4</sup> APINumber 30 - 025-47224	<sup>5</sup> PoolName SALT LAKE;BONE SPRING (OIL)	<sup>6</sup> Pool Code 53560
<sup>7</sup> Property Code 328261	<sup>8</sup> Property Name BIG EDDY UNIT DI BB JABBA	<sup>9</sup> WellNumber 100H

**II. Surface Location**

U or lot no.	Section	Township	Range	Lot Idn	Feet from the	North/South Line	Feet from the	East/West line	County
M	22	20S	32E		490	South	610	West	Lea

**ii Bottom Hole Location**

UL or lot no.	Section	Township	Range	Lot Idn	Feet from the	North/South line	Feet from the	East/West line	County
3	19	20S	32E		1997	South	72	West	Lea

<sup>12</sup> Lse Code F	<sup>13</sup> Producing Method Code F	<sup>14</sup> Gas Connection Date	<sup>15</sup> C-129 Permit Number I	<sup>16</sup> C-129 Effective Date I	<sup>17</sup> C-129 Expiration Date
-----------------------------	--	-----------------------------------	--	---	-------------------------------------

**III. Oil and Gas Transporters**

<sup>18</sup> Transporter OGRID	<sup>19</sup> Transporter Name and Address	<sup>20</sup> O /G/W
16696	Oxy USA, Inc.	O
373073	XTO Permian Midstream	G/W

**IV. Well Completion Data**

<sup>21</sup> Spud Date 10/09/2022	<sup>22</sup> Ready Date 6/13/2023	MbTD 126,160 9,046 TVD	126,14s'irJHD 9,046 TVD	<sup>25</sup> Perforations 10,513 TO 26,055	<sup>26</sup> DHC, MC
<sup>27</sup> Hole Size	<sup>28</sup> Casin! & Tubin! Size	<sup>29</sup> Depth Set	<sup>30</sup> Sacks Cement		
26	20 K55169#	1,075	1,990		
17.5	13.375 K55 54.4#	2,782	1,835		
12.25	9.625 P110 40#	5,055	1,715		
8.5	5.5 P110 23# 2 7/8 L80 6.5#	26,150 8,664	2,444		

**V. Well Test Data**

<sup>31</sup> Date New Oil 6/14/2023	<sup>32</sup> Gas Delivery Date 7/10/2023	<sup>33</sup> Test Date 7/10/2023	<sup>34</sup> Test Length 24 hrs	<sup>35</sup> Tbg. Pressure 237	<sup>36</sup> Csg. Pressure 208
<sup>37</sup> Choke Size	<sup>38</sup> ON 1342	<sup>39</sup> Water 3809	<sup>40</sup> Gas 1208	<sup>41</sup> Test Method Flowing	

<sup>42</sup> I hereby certify that the rules of the Oil Conservation Division have been complied with and that the information given above is true and complete to the best of my knowledge and belief.

Signature:  
D.manda. T

Printed name:  
Amanda Thames

Title:  
Regulatory Analyst

E-mail Address:  
amanda.thames@exxonmobil.com

Date:  
7/11/2023

Phone:  
432.221.7340

OIL CONSERVATION DIVISION

Approved by: *PATRICIA MARTINEZ*

Title: *PETROLEUM SPECIALIST*

Approval Date: *4/9/2025*

District I
1625 N. French Dr., Hobbs, NM 88240
Phone: (575) 393-6161 Fax: (575) 393-0720
District II
811 S. First St., Artesia, NM 88210
Phone: (575) 748-1283 Fax: (575) 748-9720
District III
1000 Rio Brazos Road, Aztec, NM 87410
Phone: (505) 334-6178 Fax: (505) 334-6170
District IV
1220 S. St. Francis Dr., Santa Fe, NM 87505
Phone: (505) 476-3460 Fax: (505) 476-3462

State of New Mexico
Energy, Minerals & Natural Resources Department
OIL CONSERVATION DIVISION
1220 South St. Francis Dr.
Santa Fe, NM 87505

Form C-102
Revised August 1, 2011
Submit one copy to appropriate
District Office
[ ] AMENDED REPORT

WELL LOCATION AND ACREAGE DEDICATION PLAT AS-DRILLED PLAT

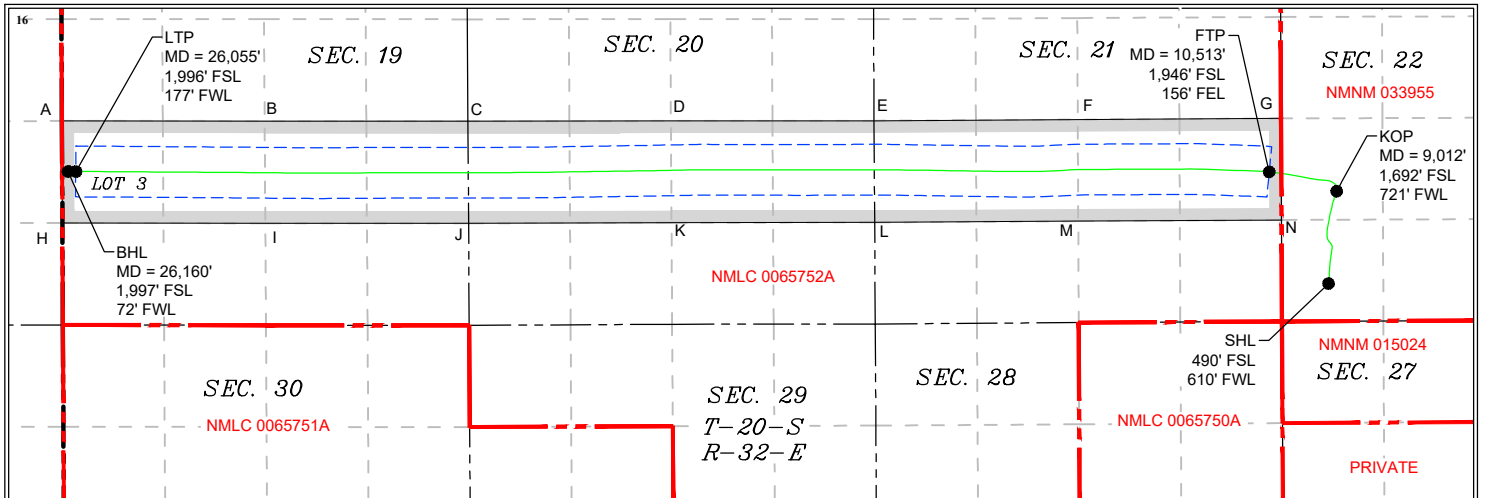
Table with 3 columns: API Number (30-025-47224), Pool Code (53560), Pool Name (SALT LAKE; BONE SPRING), Property Code (328261), Property Name (BIG EDDY UNIT DI BB JABBA), Well Number (100H), OGRID No. (373075), Operator Name (XTO PERMIAN OPERATING, LLC), Elevation (3,529')

Table for Surface Location: UL or lot no. (M), Section (22), Township (20 S), Range (32 E), Lot Idn, Feet from the (490), North/South line (SOUTH), Feet from the (610), East/West line (WEST), County (LEA)

Table for Bottom Hole Location: UL or lot no. (3), Section (19), Township (20 S), Range (32 E), Lot Idn, Feet from the (1,997), North/South line (SOUTH), Feet from the (72), East/West line (WEST), County (LEA)

Table for Dedicated Acres (479.64), Joint or Infill, Consolidation Code, Order No.

No allowable will be assigned to this completion until all interests have been consolidated or a non-standard unit has been approved by the division. NOTE: AS-DRILLED BOTTOM HOLE PLOTTED FROM DATA FURNISHED BY XTO ENERGY



LOT ACREAGE TABLE
SECTION 19
LOT 3 = 39.64 ACRES

LEGEND
SECTION LINE
WELL BORE
NEW MEXICO MINERAL LEASE
330' BUFFER
ALLOCATION AREA

17 OPERATOR CERTIFICATION

I hereby certify that the information contained herein is true and complete to the best of my knowledge and belief, and that this organization either owns a working interest or unleased mineral interest in the land including the proposed bottom hole location or has a right to drill this well at this location pursuant to a contract with an owner of such a mineral or working interest, or to a voluntary pooling agreement or a compulsory pooling order heretofore entered by the division.

Amanda Thames 7/11/23 Signature Date Amanda Thames Printed Name

amanda.thames@exxonmobil.com E-mail Address

18 SURVEYOR CERTIFICATION

I hereby certify that the well location shown on this plat was plotted from field notes of actual surveys made by me or under my supervision, and that the same is true and correct to the best of my belief.

06-01-2023 Date of Survey

Signature and Seal of Professional Surveyor:

[Handwritten Signature]



MARK DILLON HARP 23786 Certificate Number DB 618.013004.01-01

P:\618.013 XTO Energy - NM\004 Big Eddy Unit - Eddy Lea\01 - BEU DI BLUEBIRD - LEA\Wells\01 - JABBA 100H\DWG\C-102 ASD.dwg

Intent  As Drilled

API #									
Operator Name:					Property Name:				Well Number

Kick Off Point (KOP)

UL	Section	Township	Range	Lot	Feet	From N/S	Feet	From E/W	County
Latitude					Longitude				NAD

First Take Point (FTP)

UL	Section	Township	Range	Lot	Feet	From N/S	Feet	From E/W	County
Latitude					Longitude				NAD

Last Take Point (LTP)

UL	Section	Township	Range	Lot	Feet	From N/S	Feet	From E/W	County
Latitude					Longitude				NAD

Is this well the defining well for the Horizontal Spacing Unit?

Is this well an infill well?

If infill is yes please provide API if available, Operator Name and well number for Defining well for Horizontal Spacing Unit.

API #									
Operator Name:					Property Name:				Well Number

KZ 06/29/2018



30-025-47224 XTO Big Eddy Unit BB Jabba 100H ST01 8631' to 26160' MD Survey

Geodetic Report

Definitive Survey

Report Date: January 11, 2023 - 02:30 PM (UTC 0)
Client: XTO PERMAN OPERATING, L.L.C.
Structure / Slot: NM Lea County (NAD 27)
Well: Big Eddy Unit BB Jabba Pac (North Pad) / Big Eddy Unit BB Jabba 100H
Borehole: Big Eddy Unit DI BB Jabba 100H ST01
Survey Name / Version: 30-025-47224 XTO Big Eddy Unit BB Jabba 100H ST01 8631' to 26160' MD / 2
Survey Date: January 10, 2023
Tort / AHD / DDI / ERD Ratio: 291.960' / 17914.426' R / 7.145' / 1.827
Coordinate Reference System: NAD27 New Mexico State Plane, Eastern Zone, US Feet
Location Lat / Long: N 32°33'39.66425" W 103°45'36.64041"
Location Grid N/E Y/X: N 565254.000 RUS , E 676602.400 RUS
CRS Convergence Angle: 0.3084°
Grid Scale Factor: 0.99994481
Engine Version: 2022.3.0.19

Survey / DLS Computation: Minimum Curvature / Lubinski
Vertical Section Azimuth: 275.080 (North)
Vertical Section Origin: 0.000 ft, 0.000 ft
TV Reference Datum: RMB
TVD Reference Elevation: 3562.000 ft above MSL
Sealed / Ground Elevation: 3529.000 ft above MSL
Magnetic Declination: 6.826°
Total Gravity Field Strength: 998.4922mgm (9.80665 Basesd)
Gravity Model: GARM
Total Magnetic Field Strength: 47702 nT
Magnetic Dip Angle: 60.25°
Declination Date: December 19, 2022
Magnetic Declination Model: IFR1+MS
North Reference: Grid
Total Corr Mag North-Grid North: 6.5176°
Local Coord Referenced To: Well Head

Table with columns: Comments, MD (ft), Incl (°), Azim (°), TVD (ft), VSEC (ft), NS (ft), EW (ft), TVDSS (ft), DLS (ft/100ft), Northing (ft), Easting (ft), Latitude (N/E/W), Longitude (E/W), Closure (ft), Closure Azimuth. Contains data for 18-5/8" Casing and 13-3/8" Casing.

	9.14600	26.20	285.91	9.35123	95.68	1,333.95	22.52	5,789.23	10.02	566,587.88	676.624.91	N 32°33'22.99"	W 103°45'38.29"	1,334.14	0.97
	9.61300	30.80	271.96	9.436.54	141.59	1,340.68	-22.97	5,874.54	8.31	566,594.61	676.579.43	N 32°33'22.93"	W 103°45'38.82"	1,340.88	359.02
	9.71100	36.97	277.78	9.517.88	196.14	1,345.54	-77.31	5,955.88	7.11	566,599.46	676.525.09	N 32°33'22.98"	W 103°45'37.46"	1,347.76	356.71
	9.90800	41.79	275.06	9.592.84	257.64	1,352.34	-138.45	6,030.84	5.28	566,606.26	676.463.96	N 32°33'23.05"	W 103°45'38.17"	1,359.41	354.15
	9.97300	47.93	272.21	9.667.86	318.66	1,359.16	-197.15	6,105.73	6.89	566,613.51	676.411.81	N 32°33'23.12"	W 103°45'38.82"	1,371.39	352.16
	9.97500	53.10	281.71	9.704.81	370.23	1,365.97	-260.31	6,142.81	6.29	566,626.15	676.342.11	N 32°33'23.26"	W 103°45'39.69"	1,396.70	349.26
	10.07400	68.04	281.32	9.753.32	466.23	1,389.38	-344.56	6,191.32	10.09	566,643.30	676.257.86	N 32°33'23.43"	W 103°45'40.58"	1,431.46	346.07
	10.17100	77.98	278.73	9.781.63	558.53	1,405.45	-438.80	6,219.63	15.56	566,659.37	676.166.63	N 32°33'23.59"	W 103°45'41.64"	1,471.46	342.77
	10.26700	83.69	278.61	9.796.92	653.08	1,419.73	-529.45	6,234.92	5.95	566,673.65	676.072.98	N 32°33'23.74"	W 103°45'42.74"	1,515.24	339.55
	10.36400	89.12	278.64	9.803.00	749.66	1,434.24	-625.13	6,241.00	5.60	566,688.16	675.977.31	N 32°33'23.89"	W 103°45'43.85"	1,564.55	336.45
FTP [702.44' FNL, 100' FEL]	10.456.33	89.95	277.56	9.803.75	841.86	1,447.25	-716.53	6,241.75	1.47	566,701.17	675.885.11	N 32°33'24.02"	W 103°45'44.92"	1,614.91	333.66
	10.47000	90.07	277.40	9.803.75	855.52	1,449.03	-730.09	6,241.75	1.47	566,702.95	675.872.36	N 32°33'24.04"	W 103°45'45.08"	1,622.56	333.26
	10.56800	90.44	273.39	9.803.31	863.50	1,458.24	-827.63	6,241.31	4.11	566,716.16	675.774.82	N 32°33'24.14"	W 103°45'46.22"	1,676.73	330.42
	10.66500	89.73	272.21	9.803.17	1,050.49	1,462.98	-920.51	6,241.17	1.42	566,719.90	675.677.94	N 32°33'24.19"	W 103°45'46.37"	1,730.62	327.71
	10.76200	89.90	271.97	9.803.48	1,147.28	1,466.52	-1,021.45	6,241.48	0.30	566,720.43	675.581.01	N 32°33'24.23"	W 103°45'46.48"	1,787.18	325.14
	10.86100	90.33	271.88	9.803.28	1,246.13	1,469.84	-1,120.39	6,241.28	0.44	566,723.76	675.482.07	N 32°33'24.27"	W 103°45'46.64"	1,848.16	322.68
	10.95900	90.20	272.00	9.802.83	1,343.99	1,473.16	-1,218.33	6,240.83	0.18	566,727.08	675.384.14	N 32°33'24.31"	W 103°45'46.78"	1,911.68	320.41
	11.05600	89.45	271.77	9.803.12	1,440.83	1,476.35	-1,315.28	6,241.12	0.81	566,730.27	675.287.19	N 32°33'24.34"	W 103°45'46.91"	1,977.26	318.30
	11.15300	89.64	272.02	9.803.89	1,479.56	1,483.68	-1,412.22	6,241.89	0.32	566,733.47	675.190.26	N 32°33'24.38"	W 103°45'47.05"	2,045.35	316.33
	11.25100	90.48	272.25	9.803.79	1,635.55	1,483.21	-1,510.16	6,241.79	0.89	566,737.12	675.092.33	N 32°33'24.42"	W 103°45'47.19"	2,116.71	314.48
	11.34800	90.25	271.59	9.802.33	1,732.39	1,486.46	-1,607.09	6,240.33	1.05	566,740.37	674.995.40	N 32°33'24.46"	W 103°45'47.32"	2,189.13	312.77
	11.44500	90.44	271.93	9.797.24	1,833.08	1,489.56	-1,707.90	6,235.24	3.26	566,743.47	674.894.60	N 32°33'24.49"	W 103°45'47.45"	2,261.52	311.09
	11.54700	91.45	269.35	9.792.12	1,930.63	1,490.65	-1,805.74	6,230.12	4.10	566,746.56	674.796.76	N 32°33'24.51"	W 103°45'47.57"	2,334.52	309.54
	11.64500	91.24	269.79	9.789.82	2,028.15	1,489.91	-1,903.71	6,227.82	0.50	566,743.82	674.698.80	N 32°33'24.51"	W 103°45'47.69"	2,417.42	308.05
	11.74200	90.85	269.82	9.788.05	2,124.73	1,489.58	-2,000.69	6,226.05	0.40	566,743.49	674.601.82	N 32°33'24.51"	W 103°45'47.81"	2,494.32	306.67
	11.83900	89.93	269.21	9.787.39	2,221.26	1,488.76	-2,097.68	6,225.39	1.14	566,742.67	674.504.83	N 32°33'24.51"	W 103°46'01.05"	2,572.29	305.36
	11.93600	89.15	269.91	9.788.17	2,317.81	1,488.01	-2,194.68	6,226.17	1.08	566,741.93	674.407.85	N 32°33'24.50"	W 103°46'02.19"	2,651.56	304.18
	12.03400	89.26	269.87	9.789.53	2,415.87	1,487.83	-2,292.67	6,227.53	0.12	566,741.74	674.309.86	N 32°33'24.51"	W 103°46'03.33"	2,732.12	302.94
	12.13200	89.07	269.64	9.790.96	2,512.97	1,487.41	-2,390.66	6,228.96	0.30	566,741.52	674.211.88	N 32°33'24.51"	W 103°46'04.48"	2,815.60	301.89
	12.22900	89.80	269.81	9.792.76	2,609.53	1,486.94	-2,477.64	6,230.76	0.33	566,740.66	674.114.90	N 32°33'24.51"	W 103°46'05.61"	2,898.16	300.87
	12.32700	89.15	269.95	9.794.52	2,707.11	1,486.74	-2,585.62	6,232.52	0.38	566,740.65	674.016.93	N 32°33'24.51"	W 103°46'06.75"	2,982.59	299.90
	12.42400	90.67	270.33	9.794.67	2,803.74	1,486.97	-2,682.62	6,232.67	1.62	566,740.89	673.919.93	N 32°33'24.52"	W 103°46'07.89"	3,067.17	299.00
	12.52200	92.96	269.75	9.791.56	2,901.31	1,487.04	-2,780.56	6,229.56	2.41	566,740.96	673.822.00	N 32°33'24.53"	W 103°46'09.03"	3,152.22	298.14
	12.62000	92.24	268.61	9.787.12	2,998.69	1,485.64	-2,878.45	6,225.12	1.37	566,739.56	673.724.11	N 32°33'24.52"	W 103°46'10.18"	3,239.23	297.30
	12.71700	91.27	269.96	9.784.15	3,095.14	1,484.43	-2,975.39	6,222.15	1.71	566,738.35	673.627.18	N 32°33'24.51"	W 103°46'11.31"	3,325.13	296.51
	12.81500	92.34	270.09	9.781.06	3,192.71	1,484.47	-3,073.34	6,219.08	1.10	566,738.39	673.529.23	N 32°33'24.52"	W 103°46'12.45"	3,413.08	295.78
	12.91300	93.56	269.38	9.776.02	3,290.15	1,484.02	-3,171.21	6,214.02	1.44	566,737.94	673.431.37	N 32°33'24.52"	W 103°46'13.60"	3,501.27	295.08
	13.00800	92.20	269.26	9.770.35	3,384.42	1,482.07	-3,269.02	6,208.35	1.21	566,735.98	673.336.57	N 32°33'24.50"	W 103°46'14.70"	3,586.56	294.41
	13.10600	91.68	267.62	9.765.11	3,481.04	1,478.04	-3,366.84	6,204.11	2.06	566,734.95	673.239.75	N 32°33'24.47"	W 103°46'15.75"	3,674.24	293.72
	13.20400	92.30	267.46	9.762.71	3,578.52	1,473.32	-3,461.67	6,200.71	0.78	566,727.24	673.140.93	N 32°33'24.43"	W 103°46'16.89"	3,762.15	293.06
	13.30100	92.91	267.25	9.758.30	3,674.54	1,468.85	-3,558.46	6,196.30	0.67	566,722.76	673.044.14	N 32°33'24.39"	W 103°46'18.12"	3,849.70	292.43
	13.40300	92.72	266.61	9.753.29	3,775.39	1,463.39	-3,660.19	6,191.29	0.65	566,717.31	672.942.49	N 32°33'24.34"	W 103°46'19.31"	3,941.89	291.79
	13.50000	90.39	268.50	9.750.66	3,871.51	1,459.26	-3,757.06	6,186.66	0.39	566,713.17	672.845.56	N 32°33'24.30"	W 103°46'20.44"	4,030.50	291.23
	13.59700	90.32	269.94	9.750.06	3,968.00	1,457.94	-3,854.04	6,188.08	1.49	566,711.85	672.748.58	N 32°33'24.29"	W 103°46'21.58"	4,120.59	290.72
	13.69300	90.27	269.59	9.749.56	4,063.58	1,457.54	-3,950.04	6,187.56	0.37	566,711.46	672.652.58	N 32°33'24.29"	W 103°46'22.70"	4,210.37	290.25
	13.78900	90.26	269.96	9.749.12	4,159.17	1,457.17	-4,046.04	6,187.12	0.39	566,711.08	672.556.59	N 32°33'24.29"	W 103°46'23.82"	4,300.44	289.81
	13.88600	90.38	270.89	9.748.58	4,255.85	1,456.81	-4,142.03	6,185.58	0.87	566,710.70	672.460.60	N 32°33'24.29"	W 103°46'24.95"	4,392.06	289.39
	13.98400	90.37	270.66	9.747.93	4,353.57	1,456.21	-4,241.02	6,185.93	0.23	566,713.13	672.361.62	N 32°33'24.33"	W 103°46'26.07"	4,485.04	288.99
	14.08100	90.33	270.77	9.747.35	4,449.29	1,460.41	-4,337.01	6,185.35	0.12	566,714.35	672.265.63	N 32°33'24.34"	W 103°46'27.22"	4,576.30	289.61
	14.17700	90.44	270.70	9.746.70	4,546.01	1,461.65	-4,434.00	6,184.70	0.13	566,715.57	672.168.65	N 32°33'24.36"	W 103°46'28.35"	4,668.71	288.24
	14.27600	90.22	270.86	9.746.13	4,644.73	1,463.00	-4,532.99	6,184.13	0.27	566,716.92	672.069.67	N 32°33'24.38"	W 103°46'29.51"	4,763.23	287.89
	14.37200	90.25	270.95	9.745.73	4,740.47	1,464.52	-4,629.98	6,183.73	0.10	566,718.43	671.973.69	N 32°33'24.40"	W 103°46'30.63"	4,855.13	287.56
	14.47000	90.52	270.70	9.745.07	4,838.20	1,465.93	-4,726.97	6,183.07	0.38	566,719.84	671.875.87	N 32°33'24.42"	W 103°46'31.77"	4,949.06	287.23
	14.56600	90.55	271.18	9.744.18	4,933.94	1,467.50	-4,822.95	6,182.18	0.50	566,721.42	671.779.73	N 32°33'24.44"	W 103°46'32.89"	5,041.27	286.92
	14.66400	90.52	270.93	9.743.26	5,031.70	1,469.31	-4,920.93	6,181.26	0.26	566,723.22	671.681.75	N 32°33'24.46"	W 103°46'34.00"	5,135.60	286.62
	14.76200	90.43	270.86	9.742.45	5,129.43	1,470.84	-5,018.91	6,180.45	0.12	566,724.75	671.583.77	N 32°33'24.48"	W 103°46'35.15"	5,230.00	286.33
	14.85700	90.26	271.04	9.741.88	5,224.18	1,472.41	-5,113.90	6,179.88	0.26	566,726.33	671.488.79	N 32°33'24.50"	W 103°46'36.29"	5,321.65	286.06
	14.95300	90.41	270.71	9.741.32	5,319.92	1,473.88	-5,209.89	6,179.32	0.38	566,727.79	671.392.81	N 32°33'24.52"	W 103°46'37.41"	5,414.35	285.80
	15.05000	90.45	270.80	9.740.59	5,416.64	1,475.16	-5,306.87	6,178.59	0.10	566,729.07	671.295.83	N 32°33'24.54"	W 103°46'38.55"	5,508.09	285.53
	15.14800	90.32	270.57	9.739.93	5,514.35	1,476.33	-5,								

21,953.00	90.24	269.70	9.686.36	12,288.68	1,441.75	-12,208.97	6,124.36	1.02	566,695.67	664,394.12	N 32°33'24.56"	W 103°47'59.19"	12,293.81	276.73	
22,051.00	90.13	269.82	9.686.04	12,386.26	1,441.34	-12,306.97	6,124.04	0.17	566,695.26	664,296.13	N 32°33'24.56"	W 103°48'03.33"	12,291.09	276.68	
22,149.00	90.92	269.42	9.685.15	12,483.81	1,440.69	-12,404.97	6,123.15	0.90	566,694.61	664,198.14	N 32°33'24.56"	W 103°48'11.48"	12,488.34	276.62	
22,246.00	91.97	270.12	9.682.70	12,580.36	1,440.30	-12,501.93	6,120.70	1.30	566,694.22	664,101.18	N 32°33'24.56"	W 103°48'21.61"	12,584.62	276.57	
22,344.00	91.76	269.82	9.679.51	12,677.92	1,440.25	-12,599.88	6,117.51	0.37	566,694.17	664,003.24	N 32°33'24.56"	W 103°48'31.75"	12,681.93	276.52	
22,440.00	91.09	269.41	9.677.12	12,773.45	1,439.60	-12,696.85	6,115.12	0.82	566,693.52	663,907.28	N 32°33'24.56"	W 103°48'41.88"	12,777.21	276.47	
22,539.00	90.83	269.54	9.675.46	12,871.96	1,438.70	-12,794.83	6,113.46	0.29	566,692.61	663,808.30	N 32°33'24.56"	W 103°48'52.03"	12,875.46	276.42	
22,638.00	90.55	269.52	9.674.27	12,970.49	1,437.88	-12,893.82	6,112.27	0.28	566,691.80	663,709.32	N 32°33'24.55"	W 103°48'57.19"	12,973.75	276.36	
22,734.00	90.60	269.65	9.673.31	13,066.04	1,437.19	-12,989.81	6,111.31	0.15	566,691.11	663,613.33	N 32°33'24.55"	W 103°48'58.31"	13,069.07	276.31	
22,831.00	90.86	269.66	9.672.07	13,162.60	1,436.60	-13,086.80	6,110.07	0.27	566,690.52	663,516.35	N 32°33'24.55"	W 103°48'59.44"	13,165.42	276.26	
22,929.00	90.72	270.39	9.670.72	13,260.21	1,436.65	-13,184.79	6,108.72	0.76	566,690.56	663,418.36	N 32°33'24.56"	W 103°48'10.59"	13,262.83	276.22	
23,026.00	91.19	270.52	9.669.10	13,356.88	1,437.42	-13,281.77	6,107.10	0.50	566,691.34	663,321.39	N 32°33'24.57"	W 103°48'11.72"	13,359.33	276.18	
23,123.00	90.92	270.51	9.667.32	13,453.96	1,438.29	-13,378.75	6,105.32	0.28	566,692.21	663,224.41	N 32°33'24.58"	W 103°48'12.85"	13,455.84	276.14	
23,220.00	92.40	270.40	9.661.70	13,546.84	1,439.83	-13,572.66	6,099.70	0.76	566,693.75	663,030.52	N 32°33'24.61"	W 103°48'15.12"	13,548.82	276.06	
23,317.00	91.97	270.45	9.658.00	13,743.45	1,440.55	-13,669.59	6,096.00	0.45	566,694.47	662,933.59	N 32°33'24.62"	W 103°48'16.25"	13,745.28	276.02	
23,414.00	90.65	270.32	9.655.76	13,841.09	1,441.21	-13,767.56	6,093.76	1.35	566,695.12	662,835.63	N 32°33'24.63"	W 103°48'17.40"	13,842.79	275.98	
23,512.00	91.07	270.59	9.654.29	13,938.76	1,441.98	-13,865.54	6,092.29	0.51	566,695.90	662,737.65	N 32°33'24.64"	W 103°48'18.54"	13,940.32	275.94	
23,610.00	90.83	270.50	9.652.71	14,033.45	1,442.89	-13,960.53	6,090.71	0.27	566,696.81	662,642.67	N 32°33'24.66"	W 103°48'19.65"	14,034.89	275.90	
23,705.00	90.77	270.51	9.651.35	14,131.13	1,443.75	-14,058.51	6,089.35	0.06	566,697.67	662,544.69	N 32°33'24.67"	W 103°48'20.80"	14,132.45	275.86	
23,803.00	90.57	270.31	9.650.21	14,227.80	1,444.45	-14,155.50	6,088.21	0.29	566,698.36	662,447.71	N 32°33'24.68"	W 103°48'21.93"	14,229.01	275.83	
23,900.00	90.50	270.75	9.649.32	14,323.49	1,445.33	-14,251.49	6,087.32	0.46	566,699.25	662,351.72	N 32°33'24.69"	W 103°48'23.05"	14,324.60	275.79	
24,000.00	90.96	270.15	9.648.09	14,419.17	1,446.09	-14,347.48	6,086.09	0.79	566,700.00	662,255.74	N 32°33'24.71"	W 103°48'24.17"	14,420.17	275.76	
24,100.00	90.75	270.35	9.646.66	14,514.82	1,446.51	-14,443.47	6,084.66	0.30	566,700.42	662,159.75	N 32°33'24.72"	W 103°48'25.29"	14,515.72	275.72	
24,200.00	90.29	270.51	9.645.78	14,611.50	1,447.23	-14,540.46	6,083.78	0.50	566,701.15	662,062.77	N 32°33'24.73"	W 103°48'26.43"	14,612.31	275.68	
24,300.00	89.85	270.68	9.645.66	14,708.20	1,448.24	-14,637.46	6,083.66	0.49	566,702.16	661,965.78	N 32°33'24.74"	W 103°48'27.56"	14,708.93	275.65	
24,400.00	90.35	270.41	9.645.49	14,804.90	1,449.16	-14,734.45	6,083.49	0.59	566,703.08	661,868.79	N 32°33'24.76"	W 103°48'28.69"	14,805.55	275.62	
24,500.00	90.30	270.43	9.644.93	14,903.57	1,449.89	-14,833.45	6,082.93	0.05	566,703.81	661,769.80	N 32°33'24.77"	W 103°48'29.85"	14,904.14	275.58	
24,600.00	90.46	270.26	9.644.29	14,999.24	1,450.47	-14,929.45	6,082.29	0.24	566,704.38	661,673.81	N 32°33'24.78"	W 103°48'30.97"	14,999.74	275.55	
24,700.00	90.49	270.35	9.643.48	15,096.89	1,450.99	-15,027.44	6,081.48	0.10	566,704.91	661,575.82	N 32°33'24.79"	W 103°48'32.12"	15,097.33	275.52	
24,800.00	90.75	270.34	9.642.42	15,194.55	1,451.58	-15,125.43	6,080.42	0.27	566,705.50	661,477.83	N 32°33'24.80"	W 103°48'33.26"	15,194.93	275.48	
24,900.00	90.52	270.21	9.641.36	15,290.21	1,452.04	-15,221.43	6,079.36	0.28	566,705.96	661,381.84	N 32°33'24.81"	W 103°48'34.38"	15,290.53	275.45	
25,000.00	90.53	270.37	9.640.45	15,388.86	1,452.54	-15,320.42	6,078.45	0.16	566,706.46	661,282.86	N 32°33'24.82"	W 103°48'35.54"	15,389.13	275.42	
25,100.00	90.45	270.22	9.639.62	15,485.52	1,453.04	-15,417.42	6,077.62	0.18	566,706.96	661,185.87	N 32°33'24.83"	W 103°48'36.67"	15,485.74	275.38	
25,200.00	90.19	270.42	9.639.08	15,582.18	1,453.58	-15,514.41	6,077.08	0.34	566,707.50	661,088.87	N 32°33'24.84"	W 103°48'37.80"	15,582.36	275.35	
25,300.00	90.46	270.39	9.638.52	15,679.85	1,454.28	-15,612.41	6,076.52	0.28	566,708.19	660,990.88	N 32°33'24.85"	W 103°48'38.95"	15,679.99	275.32	
25,400.00	90.45	270.45	9.637.74	15,777.53	1,454.99	-15,710.40	6,075.74	0.06	566,708.91	660,892.90	N 32°33'24.86"	W 103°48'40.09"	15,777.64	275.29	
25,500.00	90.28	270.64	9.637.13	15,874.22	1,455.92	-15,807.40	6,075.13	0.26	566,709.83	660,795.91	N 32°33'24.87"	W 103°48'41.23"	15,874.30	275.26	
25,600.00	90.80	270.44	9.636.21	15,970.91	1,456.83	-15,904.39	6,074.21	0.57	566,710.75	660,698.92	N 32°33'24.88"	W 103°48'42.36"	15,970.97	275.23	
25,700.00	90.46	270.27	9.635.15	16,067.58	1,457.43	-16,001.38	6,073.15	0.39	566,711.35	660,601.94	N 32°33'24.90"	W 103°48'43.49"	16,067.62	275.20	
25,800.00	89.82	269.92	9.634.91	16,165.21	1,457.59	-16,098.38	6,072.91	0.74	566,711.51	660,503.94	N 32°33'24.91"	W 103°48'44.64"	16,165.23	275.17	
25,900.00	90.52	270.00	9.634.62	16,261.82	1,457.53	-16,196.38	6,072.62	0.73	566,711.44	660,406.95	N 32°33'24.91"	W 103°48'45.77"	16,261.83	275.14	
26,000.00	90.25	270.59	9.633.96	16,359.47	1,458.03	-16,294.37	6,071.96	0.66	566,711.95	660,308.96	N 32°33'24.92"	W 103°48'46.92"	16,359.48	275.11	
26,100.00	90.37	270.52	9.633.47	16,450.19	1,458.91	-16,385.37	6,071.47	0.15	566,712.83	660,217.97	N 32°33'24.93"	W 103°48'48.08"	16,450.19	275.09	
<b>Last Survey</b>															
<b>PTB (71.94°FWL, 668.41°FSL)</b>	<b>26,160.00</b>	<b>80.37</b>	<b>270.52</b>	<b>9,633.27</b>	<b>16,480.09</b>	<b>1,459.18</b>	<b>-16,415.37</b>	<b>6,071.27</b>	<b>0.00</b>	<b>566,713.10</b>	<b>660,187.97</b>	<b>N 32°33'24.94"</b>	<b>W 103°48'48.33"</b>	<b>16,480.09295</b>	<b>275.079749</b>

Survey Type: Definitive Survey  
 Survey Error Model: ICSW5A0 2 sigma  
 Survey Program:

Description	Part	MD From (ft)	MD To (ft)	EOU Freq (ft)	Hole Size (in)	Casing Diameter (in)	Expected Max Inclination (deg)	Survey Tool Type	Borehole / Survey
SLB / xBolt	1	0.000	1,000.000	Act Stns	24.000	18.625		A008Mb_MWD+IFR1+MS	Big Eddy Unit DI BB Jabba 100H ST01 / 30-025-47224 XTO Big Eddy Unit BB Jabba 100H ST01 8631 to 26160' MD
SLB / xBolt	1	1,000.000	2,000.000	Act Stns	17.500	13.375		A008Mb_MWD+IFR1+MS	Big Eddy Unit DI BB Jabba 100H ST01 / 30-025-47224 XTO Big Eddy Unit BB Jabba 100H ST01 8631 to 26160' MD
SLB / xBolt	1	2,000.000	8,631.000	Act Stns	12.250	9.625		A008Mb_MWD+IFR1+MS	Big Eddy Unit DI BB Jabba 100H ST01 / 30-025-47224 XTO Big Eddy Unit BB Jabba 100H ST01 8631 to 26160' MD
SLB / xBolt	1	8,631.000	26,160.000	Act Stns	8.750	5.500		A008Mb_MWD+IFR1+MS	Big Eddy Unit DI BB Jabba 100H ST01 / 30-025-47224 XTO Big Eddy Unit BB Jabba 100H ST01 8631 to 26160' MD



<b>Well Name:</b> BIG EDDY UNIT DI BB JABBA	<b>Well Location:</b> T20S / R32E / SEC 22 / SWSW / 32.55275 / -103.760677	<b>County or Parish/State:</b> LEA / NM
<b>Well Number:</b> 100H	<b>Type of Well:</b> OIL WELL	<b>Allottee or Tribe Name:</b>
<b>Lease Number:</b> NMLC065752A, NMNM33955	<b>Unit or CA Name:</b> BIG EDDY	<b>Unit or CA Number:</b> NMNM68294X
<b>US Well Number:</b> 3002547224	<b>Well Status:</b> Approved Application for Permit to Drill	<b>Operator:</b> XTO PERMIAN OPERATING LLC

**Subsequent Report**

**Sundry ID:** 2733210

**Type of Submission:** Subsequent Report

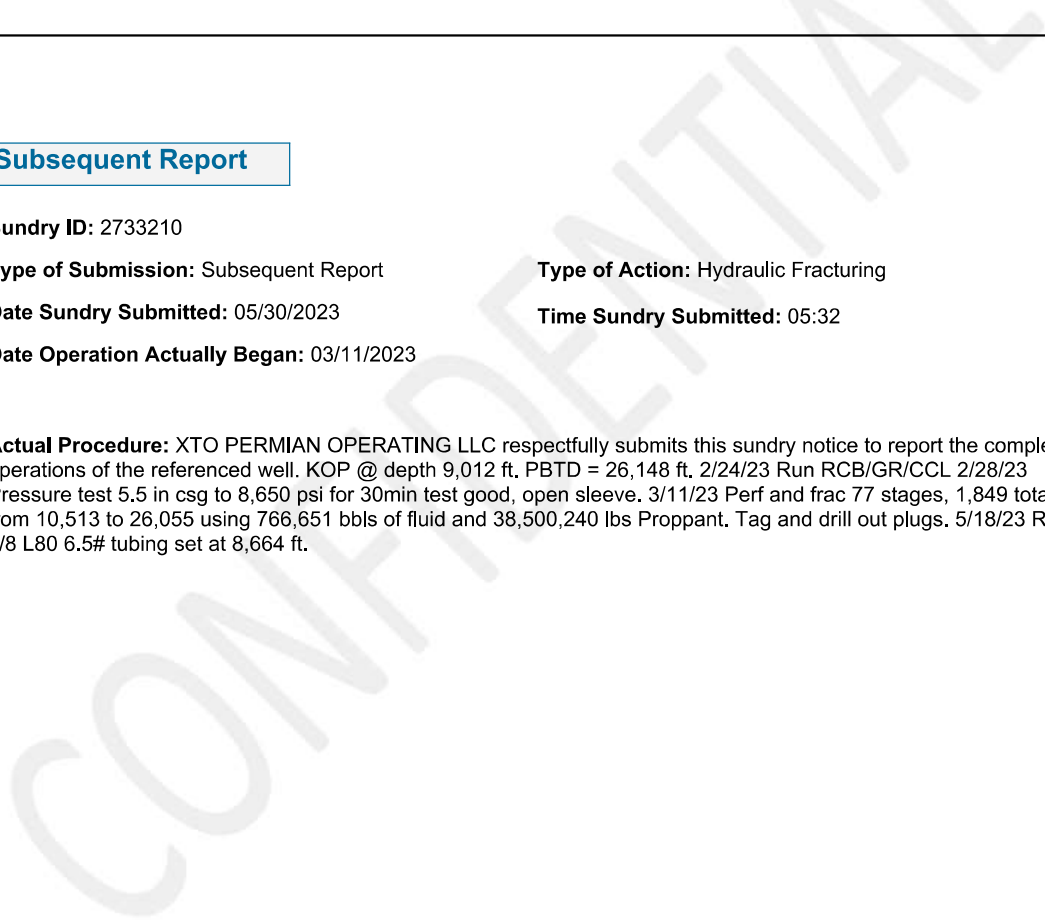
**Type of Action:** Hydraulic Fracturing

**Date Sundry Submitted:** 05/30/2023

**Time Sundry Submitted:** 05:32

**Date Operation Actually Began:** 03/11/2023

**Actual Procedure:** XTO PERMIAN OPERATING LLC respectfully submits this sundry notice to report the completion operations of the referenced well. KOP @ depth 9,012 ft. PBTB = 26,148 ft. 2/24/23 Run RCB/GR/CCL 2/28/23 Pressure test 5.5 in csg to 8,650 psi for 30min test good, open sleeve. 3/11/23 Perf and frac 77 stages, 1,849 total shots, from 10,513 to 26,055 using 766,651 bbls of fluid and 38,500,240 lbs Proppant. Tag and drill out plugs. 5/18/23 Run 2-7/8 L80 6.5# tubing set at 8,664 ft.



<b>Well Name:</b> BIG EDDY UNIT DI BB JABBA	<b>Well Location:</b> T20S / R32E / SEC 22 / SWSW / 32.55275 / -103.760677	<b>County or Parish/State:</b> LEA / NM
<b>Well Number:</b> 100H	<b>Type of Well:</b> OIL WELL	<b>Allottee or Tribe Name:</b>
<b>Lease Number:</b> NMLC065752A, NMNM33955	<b>Unit or CA Name:</b> BIG EDDY	<b>Unit or CA Number:</b> NMNM68294X
<b>US Well Number:</b> 3002547224	<b>Well Status:</b> Approved Application for Permit to Drill	<b>Operator:</b> XTO PERMIAN OPERATING LLC

**Operator**

I certify that the foregoing is true and correct. Title 18 U.S.C. Section 1001 and Title 43 U.S.C. Section 1212, make it a crime for any person knowingly and willfully to make to any department or agency of the United States any false, fictitious or fraudulent statements or representations as to any matter within its jurisdiction. Electronic submission of Sundry Notices through this system satisfies regulations requiring a

**Operator Electronic Signature:** AMANDA THAMES **Signed on:** MAY 30, 2023 05:32 AM

**Name:** XTO PERMIAN OPERATING LLC

**Title:** Regulatory Analyst

**Street Address:** 6401 HOLIDAY HILL ROAD BLDG 5

**City:** MIDLAND **State:** TX

**Phone:** (432) 221-7340

**Email address:** AMANDA.THAMES@EXXONMOBIL.COM

**Field**

**Representative Name:**

**Street Address:**

**City:** **State:** **Zip:**

**Phone:**

**Email address:**

**BLM Point of Contact**

**BLM POC Name:** JONATHON W SHEPARD **BLM POC Title:** Petroleum Engineer

**BLM POC Phone:** 5752345972 **BLM POC Email Address:** jshepard@blm.gov

**Disposition:** Accepted **Disposition Date:** 05/31/2023

**Signature:** Jonathon Shepard



Submit To Appropriate District Office Two Copies District I 1625 N. French Dr., Hobbs, NM 88240 District II 811 S. First St., Artesia, NM 88210 District III 1000 Rio Brazos Rd., Aztec, NM 87410 District IV 1220 S. St. Francis Dr., Santa Fe, NM 87505	<b>State of New Mexico</b> <b>Energy, Minerals and Natural Resources</b>  <b>Oil Conservation Division</b> <b>1220 South St. Francis Dr.</b> <b>Santa Fe, NM 87505</b>	<b>Form C-105</b> Revised April 3, 2017  1. WELL API NO. 30-025-47224  2. Type of Lease <input type="checkbox"/> STATE <input type="checkbox"/> FEE <input checked="" type="checkbox"/> FED/INDIAN  3. State Oil & Gas Lease No.
--	---	---

**WELL COMPLETION OR RECOMPLETION REPORT AND LOG**

4. Reason for filing:  <input checked="" type="checkbox"/> <b>COMPLETION REPORT</b> (Fill in boxes #1 through #31 for State and Fee wells only)  <input type="checkbox"/> <b>C-144 CLOSURE ATTACHMENT</b> (Fill in boxes #1 through #9, #15 Date Rig Released and #32 and/or #33; attach this and the plat to the C-144 closure report in accordance with 19.15.17.13.K NMAC)	5. Lease Name or Unit Agreement Name <b>BIG EDDY UNIT DI BB JABBA</b>  6. Well Number:  100H
---	---

7. Type of Completion:  
 NEW WELL  WORKOVER  DEEPENING  PLUGBACK  DIFFERENT RESERVOIR  OTHER

8. Name of Operator <b>XTO PERMIAN OPERATING LLC.</b>	9. OGRID <b>373075</b>
--	---------------------------

10. Address of Operator <b>6401 HOLIDAY HILL RD BLDG #5, MIDLAND TX 79707</b>	11. Pool name or Wildcat <b>SALT LAKE;BONE SPRING (OIL)</b>
--	--

12. Location	Unit Ltr	Section	Township	Range	Lot	Feet from the	N/S Line	Feet from the	E/W Line	County
<b>Surface:</b>	M	22	20S	32E		490	South	610	West	Lea
<b>BH:</b>		19	20S	32E	3	1997	South	72	West	Lea

13. Date Spudded 10/09/2022	14. Date T.D. Reached 01/08/2023	15. Date Rig Released 01/10/2023	16. Date Completed (Ready to Produce) 6/13/2023	17. Elevations (DF and RKB, RT, GR, etc.) 3529' GL
--------------------------------	-------------------------------------	-------------------------------------	--	---

18. Total Measured Depth of Well 26,160	19. Plug Back Measured Depth 26,148	20. Was Directional Survey Made? Yes	21. Type Electric and Other Logs Run CBL
--	--	---	---

22. Producing Interval(s), of this completion - Top, Bottom, Name  
 10,513 TO 26,055 Salt Lake; Bone Spring (Oil)

**23. CASING RECORD (Report all strings set in well)**

CASING SIZE	WEIGHT LB./FT.	DEPTH SET	HOLE SIZE	CEMENTING RECORD	AMOUNT PULLED
20"	169.0	1,075'	26"	1,990	
13 3/8"	54.5	2,782'	17 1/2"	1,835	
9 5/8"	40.0	5,055'	12 1/4"	1,715	
5 1/2"	23.0	26,150'	8 1/2"	2,444	

24. LINER RECORD				25. TUBING RECORD			
SIZE	TOP	BOTTOM	SACKS CEMENT	SCREEN	SIZE	DEPTH SET	PACKER SET
					2 7/8"	8,664	

26. Perforation record (interval, size, and number)  10,513 TO 26,055, 4spf, 1,849 Total Shots 77 stages	27. ACID, SHOT, FRACTURE, CEMENT, SQUEEZE, ETC. DEPTH INTERVAL      AMOUNT AND KIND MATERIAL USED 10,513 TO 26,055      766,651 bbl fluid + 38,500,240 lbs proppant
--	---

**28. PRODUCTION**

Date First Production 6/14/2023	Production Method ( <i>Flowing, gas lift, pumping - Size and type pump</i> ) 4 in ESP	Well Status ( <i>Prod. or Shut-in</i> ) Producing
------------------------------------	--	--

Date of Test	Hours Tested	Choke Size	Prod'n For Test Period	Oil - Bbl	Gas - MCF	Water - Bbl.	Gas - Oil Ratio
7/10/2023	24			1342	1208	3809	900

Flow Tubing Press.	Casing Pressure	Calculated 24-Hour Rate	Oil - Bbl.	Gas - MCF	Water - Bbl.	Oil Gravity - API - (Corr.)
237	208		1342	1208	3809	

29. Disposition of Gas ( <i>Sold, used for fuel, vented, etc.</i> ) Sold	30. Test Witnessed By
---	-----------------------

31. List Attachments  
 C-104 NW, C-102 & Supplement , Directional Survey (Log uploaded to NMOCD)

32. If a temporary pit was used at the well, attach a plat with the location of the temporary pit.	33. Rig Release Date:
--	-----------------------

34. If an on-site burial was used at the well, report the exact location of the on-site burial:

Latitude \_\_\_\_\_ Longitude \_\_\_\_\_ NAD83

*I hereby certify that the information shown on both sides of this form is true and complete to the best of my knowledge and belief*

Printed Name Amanda Thames Title Regulatory Analyst Date 7/11/2023

Signature Amanda Thames

E-mail Address amanda.thames@cxxonmobil.com

# INSTRUCTIONS

This form is to be filed with the appropriate District Office of the Division not later than 20 days after the completion of any newly-drilled or deepened well and not later than 60 days after completion of closure. When submitted as a completion report, this shall be accompanied by one copy of all electrical and radio-activity logs run on the well and a summary of all special tests conducted, including drill stem tests. All depths reported shall be measured depths. In the case of directionally drilled wells, true vertical depths shall also be reported. For multiple completions, items 11, 12 and 26-31 shall be reported for each zone.

## INDICATE FORMATION TOPS IN CONFORMANCE WITH GEOGRAPHICAL SECTION OF STATE

Southeastern New Mexico		Northwestern New Mexico	
T. Anhy	T. Canyon	T. Ojo Alamo	T. Penn A"
T. Salt 1,227'	T. Strawn	T. Kirtland	T. Penn. "B"
B. Salt 2,572'	T. Atoka	T. Fruitland	T. Penn. "C"
T. Yates	T. Miss	T. Pictured Cliffs	T. Penn. "D"
T. 7 Rivers	T. Devonian	T. Cliff House	T. Leadville
T. Queen	T. Silurian	T. Menefee	T. Madison
T. Grayburg	T. Montoya	T. Point Lookout	T. Elbert
T. San Andres	T. Simpson	T. Mancos	T. McCracken
T. Glorieta	T. McKee	T. Gallup	T. Ignacio Otzte
T. Paddock	T. Ellenburger	Base Greenhorn	T. Granite
T. Blinebry	T. Gr. Wash	T. Dakota	
T. Tubb	T. Delaware Sand 4,719'	T. Morrison	
T. Drinkard	T. Bone Springs 7,722'	T. Todilto	
T. Abo	T. Rustler 952'	T. Entrada	
T. Wolfcamp	T. 1st Bone Spring 8,802'	T. Wingate	
T. Penn	T. 2nd Bone Spring 9,116'	T. Chinle	
T. Cisco (Bough C)	T.	T. Permian	

### OIL OR GAS SANDS OR ZONES

No. 1, from.....to..... No. 3, from.....to.....  
 No. 2, from.....to..... No. 4, from.....to.....

### IMPORTANT WATER SANDS

Include data on rate of water inflow and elevation to which water rose in hole.

No. 1, from.....to.....feet.....  
 No. 2, from.....to.....feet.....  
 No. 3, from.....to.....feet.....

### LITHOLOGY RECORD (Attach additional sheet if necessary)

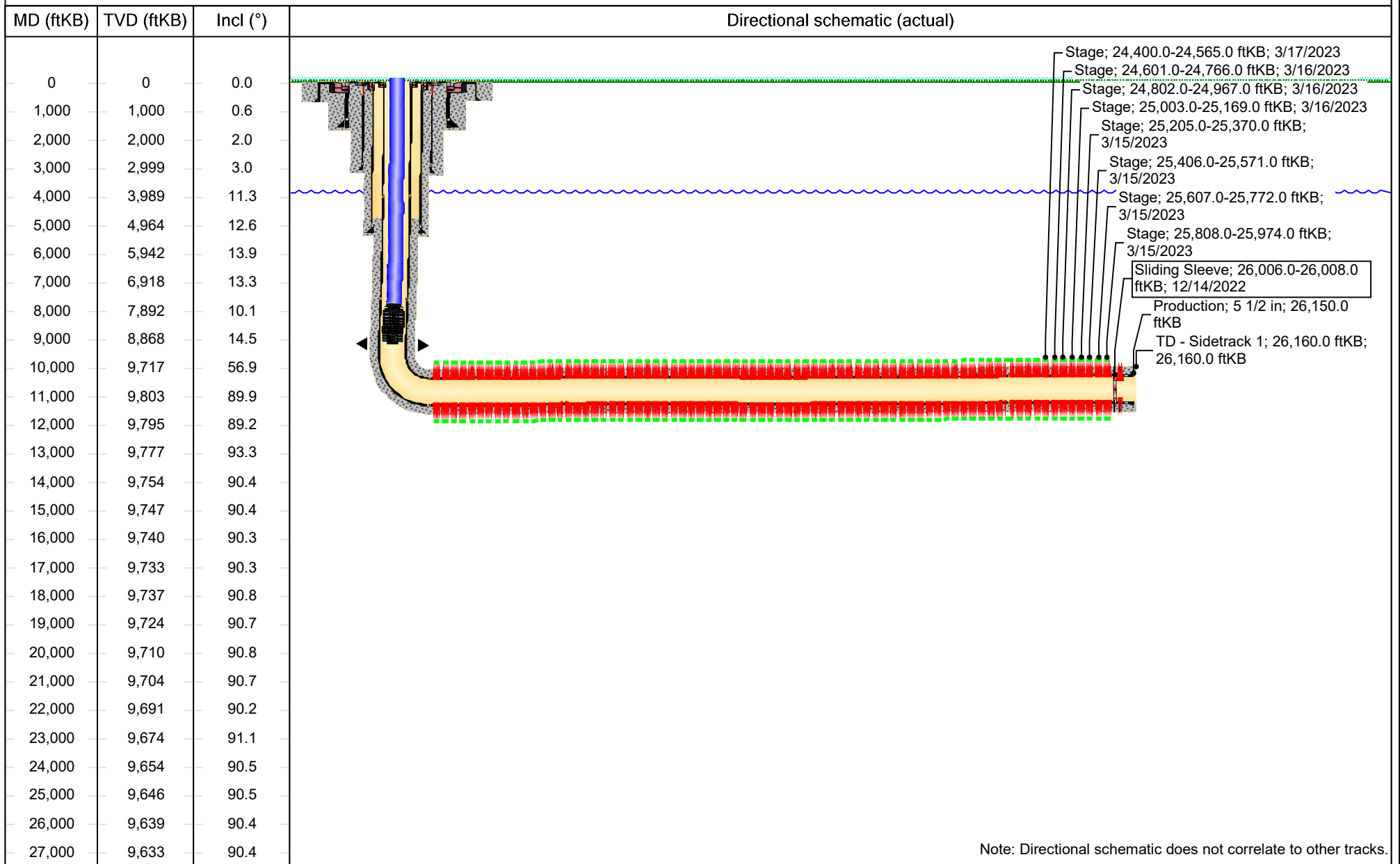
From	To	Thickness In Feet	Lithology		From	To	Thickness In Feet	Lithology



### Schematic - Current Directional with Perfs

Well Name: Big Eddy Unit DI BB Jabba 100H

API/UWI 3002547224	SAP Cost Center ID 1568951001	Permit Number BLM	State/Province New Mexico	County Lea		
Surface Location T20S-R32E-S22	Spud Date 10/9/2022 09:15	Original KB Elevation (ft) 3,561.00	Ground Elevation (ft) 3,529.00	KB-Ground Distance (ft) 32.00	Surface Casing Flange Elevatio...	



Note: Directional schematic does not correlate to other tracks.

Sante Fe Main Office  
Phone: (505) 476-3441

General Information  
Phone: (505) 629-6116

Online Phone Directory  
<https://www.emnrd.nm.gov/ocd/contact-us>

**State of New Mexico**  
**Energy, Minerals and Natural Resources**  
**Oil Conservation Division**  
**1220 S. St Francis Dr.**  
**Santa Fe, NM 87505**

ACKNOWLEDGMENTS

Action 238288

**ACKNOWLEDGMENTS**

Operator: XTO PERMIAN OPERATING LLC. 6401 HOLIDAY HILL ROAD MIDLAND, TX 79707	OGRID: 373075
	Action Number: 238288
	Action Type: [C-104] Completion Packet (C-104C)

**ACKNOWLEDGMENTS**

<input checked="" type="checkbox"/>	I hereby certify that the required Water Use Report has been, or will be, submitted for this wells completion.
<input checked="" type="checkbox"/>	I hereby certify that the required FracFocus disclosure has been, or will be, submitted for this wells completion.

Sante Fe Main Office  
Phone: (505) 476-3441

General Information  
Phone: (505) 629-6116

Online Phone Directory  
<https://www.emnrd.nm.gov/ocd/contact-us>

**State of New Mexico**  
**Energy, Minerals and Natural Resources**  
**Oil Conservation Division**  
**1220 S. St Francis Dr.**  
**Santa Fe, NM 87505**

CONDITIONS

Action 238288

**CONDITIONS**

Operator: XTO PERMIAN OPERATING LLC. 6401 HOLIDAY HILL ROAD MIDLAND, TX 79707	OGRID: 373075
	Action Number: 238288
	Action Type: [C-104] Completion Packet (C-104C)

**CONDITIONS**

Created By	Condition	Condition Date
plmartinez	File 3160-4 Completion Report within 10 days of BLM approval.	4/9/2025