

District I – (575) 393-6161  
1625 N. French Dr., Hobbs, NM 88240  
District II – (575) 748-1283  
811 S. First St., Artesia, NM 88210  
District III – (505) 334-6178  
1000 Rio Brazos Rd., Aztec, NM 87410  
District IV – (505) 476-3460  
1220 S. St. Francis Dr., Santa Fe, NM 87505

OIL CONSERVATION DIVISION  
1220 South St. Francis Dr.  
Santa Fe, NM 87505

WELL API NO. 30-015-25056
5. Indicate Type of Lease STATE <input checked="" type="checkbox"/> FEE <input type="checkbox"/>
6. State Oil & Gas Lease No.
7. Lease Name or Unit Agreement Name Empire 16 State
8. Well Number 001
9. OGRID Number 4378
10. Pool name or Wildcat Empire; Bone Spring

**SUNDRY NOTICES AND REPORTS ON WELLS**  
(DO NOT USE THIS FORM FOR PROPOSALS TO DRILL OR TO DEEPEN OR PLUG BACK TO A DIFFERENT RESERVOIR. USE "APPLICATION FOR PERMIT" (FORM C-101) FOR SUCH PROPOSALS.)

1. Type of Well: Oil Well ☒ Gas Well ☐ Other ☐

2. Name of Operator  
Chi Operating Inc.

3. Address of Operator  
P.O. Box 1799; Midland, TX 79702

4. Well Location  
Unit Letter E: 1980 feet from the North line and 660 feet from the West line  
Section 16 Township 18S Range 29E NMPM Eddy County

11. Elevation (Show whether DR, RKB, RT, GR, etc.)  
3521' GL

12. Check Appropriate Box to Indicate Nature of Notice, Report or Other Data

NOTICE OF INTENTION TO:		SUBSEQUENT REPORT OF:	
PERFORM REMEDIAL WORK <input type="checkbox"/>	PLUG AND ABANDON <input type="checkbox"/>	REMEDIAL WORK <input type="checkbox"/>	ALTERING CASING <input checked="" type="checkbox"/>
TEMPORARILY ABANDON <input type="checkbox"/>	CHANGE PLANS <input type="checkbox"/>	COMMENCE DRILLING OPNS. <input type="checkbox"/>	P AND A <input type="checkbox"/>
PULL OR ALTER CASING <input type="checkbox"/>	MULTIPLE COMPL <input type="checkbox"/>	CASING/CEMENT JOB <input type="checkbox"/>	
DOWNHOLE COMMINGLE <input type="checkbox"/>			
CLOSED-LOOP SYSTEM <input type="checkbox"/>			
OTHER: <input type="checkbox"/>		OTHER: <input type="checkbox"/>	

13. Describe proposed or completed operations. (Clearly state all pertinent details, and give pertinent dates, including estimated date of starting any proposed work). SEE RULE 19.15.7.14 NMAC. For Multiple Completions: Attach wellbore diagram of proposed completion or recompletion.

RECORD CLEAN UP

Chi Operating Inc. respectfully submits a Subsequent Report for this well. Attached are the Daily Operations Report and 2014 Wellbore Schematic.

Thank you for your time spent reviewing this submittal.

Spud Date:

Rig Release Date:

I hereby certify that the information above is true and complete to the best of my knowledge and belief.

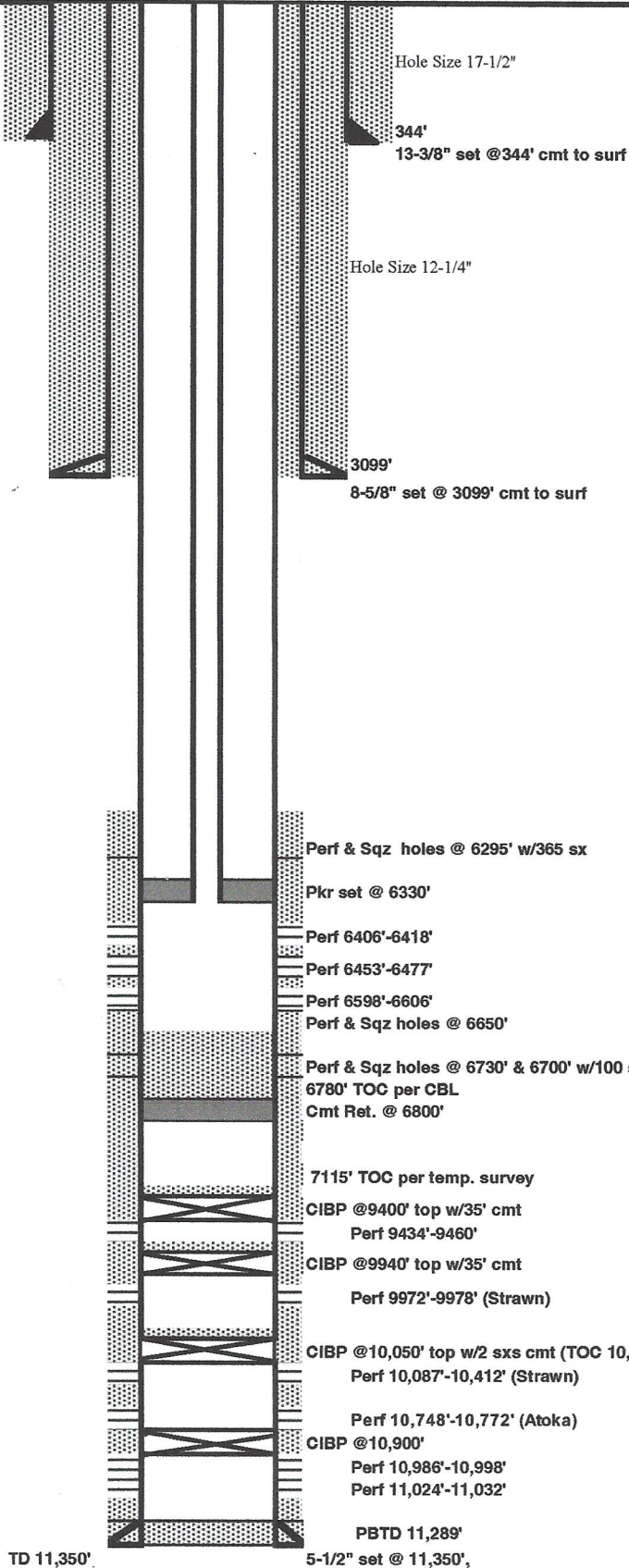
SIGNATURE: Susan B. Maunder TITLE: Regulatory Consultant DATE: 12/12/24

Type or print name Susan B. Maunder E-mail address: SMaunder@protonmail.com PHONE: 432-556-6501  
**For State Use Only**

APPROVED BY: \_\_\_\_\_ TITLE: \_\_\_\_\_ DATE: \_\_\_\_\_  
Conditions of Approval (if any): \_\_\_\_\_

## 2014 WELLBORE SCHEMATIC

DATE: 12/12/24



LEASE: Empire 16 State Com #1

OPER: CHI Operating, Inc.

API 30-015-25056

LOCATION: 1980' FNL &amp; 660' FWL of Sec. 16, T18S, R29E

TD 11,350' PBD KB 3,535' DF

COD DOD GL 3,521'

CASING/TBG: DEPTH CMT ID DRIFT URST TENS

SURF. 13-3/8" 48# H-40 344' Surf.

INTER. 8-5/8" 28# &amp; #24, S-80 3099' Surf.

PROD. 5-1/2" 17#, N-80/K-55 11,350' 7115' Survey

LINER

TBG

PERFS:

10,087'-0,412' &amp; 10,772'-10,748' (abandoned)

11,024'-11,032' &amp; 10,986'-10,998' (abandoned)

9972'-9978' (abandoned)

9434'-9460' (abandoned)

6404'-6418' &amp; 6453'-6477'

6598'-6606'

6700'-6730'

## TUBING BREAKDOWN

## ROD BREAKDOWN

Tbg Hd

## ART. LIFT

UNIT SPM RT

MOTOR SL

## NOTES

## Wellbore Casing Detail from NMOCD public records by prior operator(s)

13-3/8" cmt w/400 sxs "C" + 8 yds ready mix

8-5/8" cmt w/1100 sxs HOWCO lite + 200 sxs "C"

5-1/2" cmt w/1175 sxs "H"

TOC per temp. survey 7115'

## Current Operator

TOC 6780' per CBL

By:



Empire 16 State Com #1  
API 30-015-25056  
Daily Operations Report

- 01/14/2014 RU. ND WH unseat pkr, could not go down with tbg. Pull 1 jt, ND back up, secure well. SWIN.
- 01/15/2014 ND WH, NU BPO. Lay down 294 jts tbg. Dig out well head down to "a" section. SWIN.
- 01/16/2014 Load out 294 jts. tbg to double rr pipe. Load 225 jts. 2 7/8" tbg work string on pipe racks. RU Capitan wireline. Run 4.625 gage ring to 9450' ok. TIHw/CIBP set @ 9400'. Run CBL 9400'-6000'; cmt top @ 6780'. TIH dump 35' cmt on top CIBP @ 9400'. TIH w/ perf gun, perforate 4 squeeze holes @ 6730'. TOH try to break circulation pressure up perforate 4 squeeze holes @ 6700' try to break circ pressure up on squeeze hole 5 times to 1500 psi surge well no success RD Capitan wire line. SWIN.
- 01/17/2014 Tally and PU 207 jts. 2 7/8" N-80 tbg. Seat pkr @ 6622' load annulus and pressure up to 1000', load 8 5/8"x5 1/2" annulus RU on 2 7/8" tbg, pressure up on tbg 1500 psi got inj rate 1bpm @ 1300 surge tbg inj. rate stayed same. RD and release unit, pump not big enough to do job. SWIN for weekend. Note: well may be packed off up to unknown depth. Think we need to perforate @ 6640' TIH & get kill truck to try to break circulation.
- 01/18/2014 WOO. TOH w/pkr and 207 jts. tbg. SWIN.
- 01/19/2014 RU renigade wire line. TIH w/ccl and 3-1/2" perf gun. Got on depth shot 3 squeeze perfs @ 6650'. TOH w/ guns for PU w/ pump truck. Took 17 bbl to load hole pressure up on 5-1/2" csg. to 1300 psi. Took fluid @ 1 bpm. RD pump truck. TIH w/pkr set pkr @ 6607'. RU lill truck pressure up on perfs, 1300 psi establish rate 1 1/2 bpm. TOH t/ 6188' set pkr load 5 1/2" annulus pressure up to 1000 psi. RU to run tracer survey, spot ra slugs in well bore, pump ra slugs into squeeze perfs. RA slugs show no ra @ squeeze perfs @ 6650' or @ 7630' all ra material @ squeeze perfs @ 6700' shows no channel up or down. RD wire line truck. SWIN.
- 01/21/2014 TOH w/ pkr. RU Capitan wire line. TIH w/cmt retainer, run collar locator, get on depth set CIBP @ 6625'. TOH w/wire line, RD wire line truck. TIH tag cmt ret @ 6625'. RU par 5 cmeters to squeeze well. Circulate 100 bbls, tag cmt retainer, try to sting in cmt ret. Went down hole 10', try to push cmt retailer down hole w/ no success. Decided to rig par 5 cmeters down. TOH and drill out cmt retainer and push it down hole. TOH w/ 2-7/8" tbg Note: reverse unit to be on location am.
- 01/22/2014 Wait on reverse unit. Unload and RU reverse unit. Pick up 4-3/4" bit. TIH w/ 6 3-1/2" drill collars, 202 jts. of 2-7/8" tbg. Tag up on cmt retainer @ 6641'. PU swivel. SWIN.
- 01/23/2014 RU reverse unit to drill out cmt ret. Drill out cmt ret and push ret t/ 6800' circ hole clean. RD swivel rig to pull tbg. TOH. TIH w/ cmt ret set @ 6620' and pump thru ret. Left tbg stung in. SWIN.
- 01/24/2014 RU par 5 cmeters. Squeeze well w/ 100 sxs "h" + .2% pf 65 + .2% pf 167. Spot cmt, 5 bbl short of cmt ret. Sting int ret., pressure annulus to 750 psi, start squeeze 21 bbl cmt. When 11

bbl cmt in form @ 2700# 1.5 bpm, pressure drop to 860# continue w/squeeze pressure climbing and dropping w/rate got as high as 3k slowed rate down to 1/2 bpm trying to squeeze. Got squeeze w/ 1/2 bbl over capacity of displacement. Stung out of retainer, reversed out 4 bbl of cmt. RD par 5. TIH to pull tbg. TOH w/retainer sting in tool. SWIN. Note: cmt density 15.6.

- 01/25/2014 RU Capitan wire line. TIH w/cbl log to check for cmt from previous squeeze @ 6650' no cmt @ 6620'. TOH, TIH shoot 4 squeeze holes @6295'. TOH. RD wireline truck. RU reverse pump. Pump 23 bbl 5 1/2"x8-5/8" annulus, start circulating. Circ 100 bbl. TIH w/cmt retainer set @ 6188'; sting into cmt ret, establish circulation. RU davis fluid caliper, found 759 cu,ft to 3100'. 20% wash out. RD davis fluid caliper. SWIN.
- 01/26/2014 Prepare to cmt well. Problems water trucks contaminated water, froze up pumps, lines, etc. Cmt well w/365 sxs 35/65 paz+6%pf20+.2%pf13+.125ppspf29+.4ppspf 46. Tail 200 sxs "C"+.2%pf13 had good circulation throughout job. RD par 5 cmeters, drain up. SWIN. Note: AM well had water flow after we circulated out 9.4 mud, toward end of cmt job shut 8 5/8" csg in; let pressure build to squeeze off water flow left 8-5/8" csg shut in.
- 01/28/2014 WOC
- 01/29/2014 TIH w/ 4-3/4" bit. RU to drill out, drill on cmt retainer @ 6188'. Drilled top part of retainer. Bottom part of retainer started spinning. Circ bottoms up, some cmt in returns. SWIN.
- 01/30/2014 TOH w/bit had a small piece broke from one cone. TIH w/bit #2. RU to drill. Drill f/6233-6235'. Cmt and small pieces of metal in returns. Circ hole clean. SWIN.
- 01/31/2014 PU swivel prime pumps. Drill f/6235'-6238' tried all methods drilling. WOB, rpm we just going to have get cmt retainer heemed up. Circ hole clean prep to TOH.
- 02/03/2014 TOH w/bit#2. TIH w/bit #3 varrel type bit. Wait on equip repair. RU and drill 6238'-6239', getting some cas, black metal, little cmt, circ clean. SWIN.
- 02/04/2014 Pressure up on csg; 500 psi ok. Try several different methods of drilling w/no success (dry drl, conventional) drop glass in hole. Circulate hole clean. TOH w/bit #3; cone buster bit tore up running on junk. WOO. TIH w/ 4-3/4" shoe. PU swivel, get circ, tag bottom @ 6239'. Made 3" hole, circ out cmt and rust. SWIN. Note: checked all tallies; shows to be @ 6404' i jt. Off by old tally, cmt retainer was set @ 6188'. Conclusion cmt retainer never drilled. We are on cmt retainer now w/junk in hole.
- 02/05/2014 Finish TIH, PU tools; drill 6207'-6289'. Drill hard cmt. Circulate hole clean. SWIN.
- 02/07/2014 Drill cmt thru 6300'; test perfs, okay. TIH clean out and test all perfs t/6677'. Drill string plug off. TOH w/wet string. SWIN.
- 02/08/2014 Run 3 logs to get on depth, perforate well as follow on select fire 1 spf 6602-6606', 6598', 6473-7477', 6465-6469', 6457-6461', 6453', 6414-6418', 6406-6410'. RD wire line. TIH w pkr set @6330'. Swab on well; 22 bbl. Last run fluid level @ 5400'. SWIN.



- 02/10/2014 RU and acidize well w/1500 gal 7.5 HCl acid formation broke @ 2120 psi. Acidized well 4 bpm @ avg. 2584 psi. Balled out zone 2 times; isip 1040 5 min, 916 10 min, 905 15 min, 895 total load 80 bbl. RD acid trucks. RU swab on well; recovered 37 bbl all acid water, small amount gas, no oil. SWIN.
- 02/11/2014 Swab on well recovered 21 bbl; all water, good gas, no oil like 11 bbl to recover load.
- 02/12/2014 Check psi on well; 250 psi, bled down. Swab on well, recovered 11 bbl. Opening fluid level 5000'. All swab runs from seating nipple, no oil, pretty good gas. SWIN.
- 02/12/2014 Check psi on well, 250 psi. Unseat pkr, ND BOP, respace pkr, and reset. NU WH, test pkr to 500 psi ok. Swab well down. RD.
- 02/21/2014 RU to frac well w/150k#20/40 white sand 48k#slc sand. Frac well as follows: load hole 18 bbl spearhead acid, 2000 gal 10 bpm 300 psi; spacer 1000 gal, pad 476 bbl, 22.5 bpm 4780 psi-4350 psi; 49 bbl 5#sand 4350 psi -4280 psi 22.5 bpm; pad 476 bbl 4280 psi-4780 psi 22.5 bpm; 467 bbl 1#20/40 white sand 4780 psi-4330 psi 22.5 bpm; 467 bbl 2#20/40 white sand 4780 psi-3900psi 22.5 bpm; 406 bbl 3# 20/40 white sand 3900-4770 increased rate to 25 bpm; 338 bbl 4#20/40 SLC 4770 psi when we had 10k sand gone pressure increased to 5200 cut of sand went to flush. Got flush to perfs. SWIN. ISIP 1404 5 min 1357 10 min 1336 15 min 1317. flow well; 330 bbl recovered. psi 1000-100 choke 16-20/64 choke.
- 02/22-23/2014 Note: flow well back after frac 2/22-23/14. Flow back recovered 489 bbl. all water LTR 2711 bbl.
- 02/24/2014 RD; DEMOB flow back people, drain all frac tanks, and release same. RU Swab rig.
- 02/25/2014 Swab on well; made 32 runs recovered 332 bbl. Well flowed 32 bbl; 1-2% oil cut well died. SWIN. Total bbl recovered today 364 bbl.
- 02/26/2014 Tbg psi 1150. Install choke; start flowing well; flow 285 bbl. water 16 bbl oil. RU flow people, separator, manifold, sand trap, flare. Flowed 119 bbl water 0 bbl oil psi 150-130 psi on 40/64 gas rate 200 mcf/d average. Flowed 86 bbl water 4 bbl oil tub psi 130 40/64 gas rate 215 mcf/d average.
- 02/27/2014 Flow well; total bbl flowed 336 bbl. 321 bbl water; 15 bbl oil; LTR 629. Tbg psi fluctuates 150 psi - 60 psi; gas rate fluctuates 215 mcf/d - 40 mcf/d.
- 02/28/2014 Flow well. Made 2 swab runs; 152 bbl. 478 bbl ltr; gas rate 200mcf-0 mcf.
- 02/28-03/04/14 Flow well into tank; 416 bbl trace of oil.
- 03/03/2014 Crew to location. Flow and swab on well; made 25 runs. Fluid level 1100'. Swab from 4500'. Total 163 bbl recovered; 17 bbl oil today. Oil pretty tied up in water. Start separating. A little better as temp warmed in day took water sample to Baker Hughes.
- 03/04/2014 Crew to location. Swab on well, tbg psi 2000 psi. Made 20 runs - recovered 135 bbls; 119 bbl water; 16 bbl water. Opening fluid level 500'; end fluid level 2000'.

- 03/05/2014 Crew to loc. Safety meeting. 1400 psi on tbg. Bled well down; got back 4 bbl. Swab on well; made 26 runs. Opening fluid level 700'; ending level 1800'. Recovered total 164 bbl. 151 bbl water; 13 bbl oil. SWIN.
- 03/06/2014 Crew to loc. Safety meeting. Check tbg psi; 1400 psi. Bled down psi 4 bbl; 2 water; 2 oil. Made five runs, recovered 30 bbl. All water no oil. Opening fluid level 800' ending level 1500'. RD, clean loc.  
Note: All equip released except 2 tanks, one t&c #308 87 bbl. Total in tank 10 bbl water 77 bbl oil. MEICO tank #131 245 bbl. Total fluid 200 bbl water 45 bbl; oil. Tbg on loc: 30 jts 2-7/8", 186 jts tbg in hole; work string.

Sante Fe Main Office  
Phone: (505) 476-3441

General Information  
Phone: (505) 629-6116

Online Phone Directory  
<https://www.emnrd.nm.gov/oed/contact-us>

State of New Mexico  
Energy, Minerals and Natural Resources  
Oil Conservation Division  
1220 S. St Francis Dr.  
Santa Fe, NM 87505

CONDITIONS

Action 411506

CONDITIONS

Operator: CHI OPERATING INC P.O. Box 1799 Midland, TX 79702	OGRID: 4378
	Action Number: 411506
	Action Type: [C-103] Sub. Workover (C-103R)

CONDITIONS

Created By	Condition	Condition Date
gcordero	None	4/11/2025