

Santa Fe Main Office
Phone: (505) 476-3441
General Information
Phone: (505) 629-6116

State of New Mexico
Energy, Minerals and Natural Resources

Form C-103
Revised July 18, 2013

Online Phone Directory Visit:
<https://www.emnrd.nm.gov/ocd/contact-us/>

OIL CONSERVATION DIVISION
1220 South St. Francis Dr.
Santa Fe, NM 87505

SUNDRY NOTICES AND REPORTS ON WELLS (DO NOT USE THIS FORM FOR PROPOSALS TO DRILL OR TO DEEPEN OR PLUG BACK TO A DIFFERENT RESERVOIR. USE "APPLICATION FOR PERMIT" (FORM C-101) FOR SUCH PROPOSALS.) 1. Type of Well: Oil Well <input type="checkbox"/> Gas Well <input checked="" type="checkbox"/> Other		WELL API NO. 30-015-34032 5. Indicate Type of Lease STATE <input checked="" type="checkbox"/> FEE <input type="checkbox"/> 6. State Oil & Gas Lease No.
2. Name of Operator Caza Operating		7. Lease Name or Unit Agreement Name Ogden 15
3. Address of Operator 200 N Lorraine St; Ste 1550 Midland, TX 79701		8. Well Number 1
4. Well Location Unit Letter <u>O</u> : <u>990</u> feet from the <u>S</u> line and <u>660</u> feet from the <u>W</u> line Section <u>15</u> Township <u>23S</u> Range <u>27E</u> NMPM County <u>Eddy</u>		9. OGRID Number 249099
11. Elevation (Show whether DR, RKB, RT, GR, etc.) 3131 GR		10. Pool name or Wildcat S Carlsbad Morrow 73960

12. Check Appropriate Box to Indicate Nature of Notice, Report or Other Data

NOTICE OF INTENTION TO: PERFORM REMEDIAL WORK <input type="checkbox"/> PLUG AND ABANDON <input checked="" type="checkbox"/> TEMPORARILY ABANDON <input type="checkbox"/> CHANGE PLANS <input type="checkbox"/> PULL OR ALTER CASING <input type="checkbox"/> MULTIPLE COMPL <input type="checkbox"/> DOWNHOLE COMMINGLE <input type="checkbox"/> CLOSED-LOOP SYSTEM <input type="checkbox"/> OTHER: <input type="checkbox"/>	SUBSEQUENT REPORT OF: REMEDIAL WORK <input type="checkbox"/> ALTERING CASING <input type="checkbox"/> COMMENCE DRILLING OPNS. <input type="checkbox"/> P AND A <input type="checkbox"/> CASING/CEMENT JOB <input type="checkbox"/> OTHER: <input type="checkbox"/>
---	---

Notify OCD 24 hrs. prior to any work
done. gilbert.cordero@emnrd.nm.gov

13. Describe proposed or completed operations. (Clearly state all pertinent details, and give pertinent dates, including estimated date of starting any proposed work). SEE RULE 19.15.7.14 NMAC. For Multiple Completions: Attach wellbore diagram of proposed completion or recompletion.

Please see attached. Work is set to begin immediately upon approval of this C-103.

Spud Date: 8/11/2005

Rig Release Date: 9/27/2005

****SEE ATTACHED COA's****

MUST BE PLUGGED BY 11/1/2025

I hereby certify that the information above is true and complete to the best of my knowledge and belief.

SIGNATURE Tami Laird TITLE Regulatory Consultant DATE 4/23/25

Type or print name Tami Laird E-mail address: tlaird@ntglobal.com PHONE: 405-821-0568

For State Use Only

APPROVED BY: Gilbert Cordero TITLE Staff Manager DATE 4/23/25
 Conditions of Approval (if any):

Caza Petroleum, Ogden 15 #1

1. MIRU
2. Spot 25 sx Cl H cmt 10982' - 10782' - T Atoka
3. Spot 25 sx Cl H cmt 10700' - 10500' - T Strawn
4. Set CIBP @10,322' - Test Casing 500psi/30min - Bubble Test - Run CBL to Surface
5. Spot Cement Pug on top of CIBP Tag @10,072
6. Spot 25SX @8900' - 8,650'
7. Spot 25SX @8,250' - 8,050'
8. Spot 25SX @5606' - 5,406'
9. Spot 25 sx cmt 4242' - 4042' - T Brushy Canyon
10. Spot 25SX @3,500' - 3,250'
11. Spot 25 sx cmt 2942' - 2742' - T Cherry Canyon
12. Spot 25 sx cmt 2200' - 2000' - T Bell Canyon
13. Spot 25SX @1,800' - 1,550'
14. Cement 670' - Surface - WOC, Bubble Test
15. Cut well head and install dry hole marker

Plugs can change according to CBL

State of New Mexico
Energy, Minerals and Natural Resources Department
Oil Conservation Division
Standard Plugging Conditions



This document provides OCD's general plugging conditions of approval. It should be noted that the list below may not cover special plugging programs in unique and unusual cases, and OCD expressly reserves the right to impose additional requirements to the extent dictated by project conditions. The OCD also reserves the right to approve deviations from the below conditions if field conditions warrant a change. A C-103F NOI to P&A must be approved prior to plugging operations. Failure to comply with the conditions attached to a plugging approval may result in a violation of 19.15.5.11 NMAC, which may result in enforcement actions, including but not limited to penalties and a requirement that the well be re-plugged as necessary.

1. Notify OCD office at least 24 hours before beginning work and seek prior approval to implementing any changes to the C-103 NOI to PA.
 - North Contact, Monica Kuehling, 505-320-0243, monica.kuehling@emnrd.nm.gov
 - South Contact, Gilbert Cordero, 575-626-0830, gilbert.cordero@emnrd.nm.gov
2. A Cement Bond Log is required to ensure strata isolation of producing formations, protection of water and correlative rights. A CBL must be run or be on file that can be used to properly evaluate the cement behind the casing.

Note: Logs must be submitted to OCD via OCD permitting. A copy of the log may be emailed to OCD inspector for faster review times, but emailing does not relieve the operators obligation to submit through OCD permitting.

3. Once Plugging operations have commenced, the rig must not rig down until the well is fully plugged without OCD approval. If gap in plugging operations exceeds 30 days, the Operator must file a subsequent sundry of work performed and revised NOI for approval on work remaining. At no time shall the rig be removed from location if it will result in waste or contamination of fresh water.
4. Insure all bradenheads have been exposed, identified and valves are operational prior to rig up.
5. Fluids must be placed between all cement plugs mixed at 25 sacks per 100 bbls of water.
 - North, water or mud laden fluids
 - South, mud laden fluids
6. Closed loop system is to be used for entire plugging operation. Upon completion, contents of steel pits are to be hauled to an OCD permitted disposal facility.
7. Class of cement shall be used in accordance with the below table for depth allowed.

Class	TVD Lower Limit (feet)
Class A/B	6,000
Class I/II	6,000
Class C or III	6,000
Class G and H	8,000
Class D	10,000

Class E	14,000
Class F	16,000

8. After cutting the well head any "top off cement jobs" must remain static for 30 minutes. Any gas bubbles or flow during this 30 minutes shall be reported to the OCD for approval of next steps.
9. Trucking companies being used to haul oilfield waste fluids (Commercial or Private) to a disposal facility shall have an approved OCD C-133 permit.
 - A copy of this permit shall be available in each truck used to haul waste products.
 - It is the responsibility of the Operator and Contractor to verify that this permit is in place prior to performing work.
 - Drivers shall be able to produce a copy upon request of an OCD Compliance Officer.
10. Filing a [C-103] Sub. Plugging (C-103P) will serve as notification that the well has been plugged.
11. A [C-103] Sub. Release After P&A (C-103Q) shall be filed no later than a year after plugging and a site inspection by OCD Compliance officer to determine if the location is satisfactorily cleaned, all equipment, electric poles and trash has been removed to meet OCD standards before bonding can be released.
12. Produced water or brine-based fluids **may not** be used during any part of plugging operations without **prior OCD approval**.
13. Cementing;
 - All cement plugs will be neat cement and a minimum of 100' in length. 50' of calculated cement excess required for inside casing plugs and 100% calculated cement excess required on outside casing plugs.
 - If cement does not exist between or behind the casing strings at recommended formation depths, the casing perforations will be shot at 50' below the formation top and the cement retainer shall be set no more than 50' from the perforations.
 - WOC (Wait on Cement) time will be:
 - 4 hours for accelerated (calcium chloride) cement.
 - 6 hours on regular cement.
 - Operator must tag all cement plugs unless it meets the below condition.
 - The operator has a passing pressure test for the casing annulus and the plug is only an inside plug.
 - If perforations are made operator must tag all plugs using the work string to tag unless given approval to tag with wireline by the correct contact from COA #1 of this document.
 - This includes plugs pumped underneath a cement retainer to ensure retainer seats properly after cement is pumped.
 - Cement can only be bull-headed with specific prior approval.
 - Squeeze pressures are not to exceed the exposed formations frac gradient or the burst pressure of the casing.
14. A cement plug is required to be set from 50' below to 50' above (straddling) formation tops, casing shoes, casing stubs, any attempted casing cut offs, anywhere the casing is perforated, DV tools.
 - Perforation/Formation top plug. (When there is less than 100ft between the top perforation to the formation top.) These plugs are required to be started no greater than

50ft from the top perforation. However, the plug should be set below the formation top or as close to the formation top as possible for the maximum isolation between the formations. The plug is required to be a 100ft cement plug plus excess.

- Perforation Plug when a formation top is not included. These plugs are required to be started within 50ft of the top perforation. The plug is required to be a 100ft cement plug plus excess.
- Cement caps on top of bridge plugs or cement retainers for perforation plugs, that are not straddling a formation top, may be set using a bailer with a minimum of 35' of cement in lieu of the 100' plug. The bridge plug or retainer must be set within 50ft of the perforations.
- Perforations are required below the surface casing shoe if cement does not exist behind the casing, a 30-minute minimum wait time will be required immediately after perforating to determine if gas and/or water flows are present. If flow is present, the well will be shut-in for a minimum of one hour and the pressure recorded. If gas is detected contact the OCD office for directions.

15. No more than 3000 feet is allowed between cement plugs in cased hole and no more than 2000 feet is allowed in open hole.

16. Formation Tops to be isolated with cement plugs, but not limited to are:

- Northwest See Figure A
- South (Artesia) See Figure B
- Potash See Figure C
 - In the R-111-P (Or as subsequently revised) Area a solid cement plug must be set across the salt section. Fluid used to mix the cement shall be saturated with the salts that are common to the section penetrated and in suitable proportions, not more than 3% calcium chloride (by weight of cement) will be considered the desired mixture whenever possible, woe 4 hours and tag, this plug will be 50' below the bottom and 50' above the top of the Formation.
- South (Hobbs) See Figure D1 and D2
- Areas not provided above will need to be reviewed with the OCD on a case by case basis.

17. Markers

- Dry hole marker requirements 19.15.25.10.

The operator shall mark the exact location of plugged and abandoned wells with a steel marker not less than four inches in diameter set in cement and extending at least four feet above mean ground level. The marker must include the below information:

 1. Operator name
 2. Lease name and well number
 3. API number
 4. Unit letter
 5. Section, Township and Range
- AGRICULTURE (Below grade markers)

In Agricultural areas a request can be made for a below ground marker. For a below ground marker the operator must file their request on a C-103 notice of intent, and it must include the following;

 - A) Aerial photo showing the agricultural area
 - B) Request from the landowner for the below ground marker.

C) Subsequent plugging report for a well using a below ground marker must have an updated C-102 signed by a certified surveyor for SHL.

Note: A below ground marker is required with all pertinent information mentioned above on a plate, set 3' below ground level, a picture of the plate will be supplied to OCD for record, the exact location of the marker (longitude and latitude by GPS) will be provided to OCD. OCD requires a current survey to verify the location of the below ground marker, however OCD will accept a GPS coordinate that were taken with a GPS that has an accuracy of within 15 feet.

18. If work has not commenced within 1 year of the approval of this procedure, the approval is automatically expired. After 1 year a new [C-103] NOI Plugging (C-103F) must be submitted and approved prior to work.

Figure A

North Formations to be isolated with cement plugs are:

- San Jose
- Nacimiento
- Ojo Alamo
- Kirtland
- Fruitland
- Picture Cliffs
- Chacra (if below the Chacra Line)
- Mesa Verde Group
- Mancos
- Gallup
- Basin Dakota (plugged at the top of the Graneros)
- Deeper formations will be reviewed on a case-by-case basis

Figure B

South (Artesia) Formations to be isolated with cement plugs are:

- Fusselman
- Montoya
- Devonian
- Morrow
- Strawn
- Atoka
- Permo-Penn
- Wolfcamp
- Bone Springs
- Delaware , in certain areas where the Delaware is subdivided into;
 - 1. Bell Canyon
 - 2. Cherry Canyon
 - 3. Brushy Canyon
- Any salt sections
- Abo
- Yeso
- Glorieta
- San Andres
- Greyburg
- Queen
- Yates

Figure D1 and D2

South (Hobbs) Formations to be isolated with cement plugs are:

The plugging requirements in the Hobbs Area are based on the well location within specific areas of the Area (See Figure D1). The Formations in the Hobbs Area to be isolated with cement plugs are (see Figure D2)

Figure D1 Map

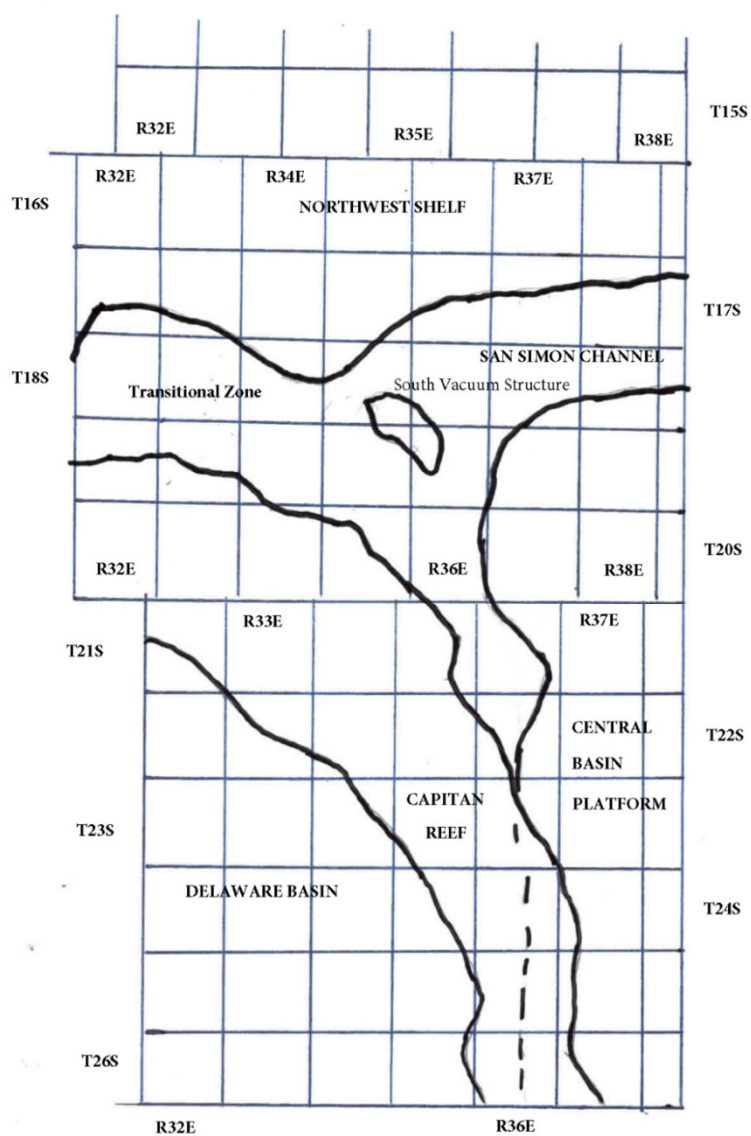


Figure D2 Formation Table

100' Plug to isolate upper and lower fresh water zones (typically 250' to 350')						
Northwest Shelf	Captan Reef Area	Transition Zone	San Simon Channel	South Vacuum Structure	Delaware Basin	Central Basin Platform
Granit Wash (Detrital basement material and fractured pre-Cambrian basement rock)	Siluro-Devonian	Morrow	Siluro-Devonian	Ellenburger	Siluro-Devonian	Granit Wash (Detrital basement material, fractured pre-Cambrian basement rock and fracture Mafic Volcanic intrusives).
Montoya	Mississippian	Atoka	Morrow	McKee	Morrow	Ellenburger
Fusselman	Morrow	Strawn	Wolfcamp	Siluro-Devonian	Atoka	Connell
Woodford	Atoka	Cisco	Abo Reef	Woodford	Strawn	Waddell
Siluro-Devonian	Strawn	Pennsylvanian	Bone Spring	Mississippian	Pennsylvanian	McKee
Chester	Pennsylvanian	Wolfcamp	Delaware	Barnett Shale	Lower Wolfcamp	Simpson Group
Austin	Wolfcamp	Bone Spring	San Andres	Morrow	Upper Wolfcamp	Montoya
Mississippian	Abo Reef, if present	Delaware	Queen	Atoka	Wolfcamp	Fusselman
Morrow	Abo, if present	San Andres	Yates	Strawn	Third Bone Spring Sand (Top of Wolfbone)	Silurian
Atoka	Queen, if present	Grayburg-San Andres	Base of Salt	Canyon	First Bone Spring Sand (Top of Lower Bone Spring)	Devonian
Lower Pennsylvanian	Bone Spring	Queen	Rustler	Pennsylvanian	Bone Spring	Strawn
Cisco-Canyon	Delaware	Seven Rivers		Blinbry	Brushy Canyon	Pennsylvanian
Pennsylvanian	Base Capitan Reef	Yates		Bone Spring	Delaware (Base of Salt)	Wolfcamp
Bough	Seven Rivers	Base of Salt		San Andres	Rustler	Abo
Wolfcamp	Yates	Rustler		Queen		Abo Reef
Abo	Top Capitan Reef			Base of Salt		Drinkard
Abo Reef, if present	Base of Salt			Rustler		Tubb
Yeso (Township 15 South to Township 17 South)	Rustler					Blinbry
Drinkard or Lower Yeso (Township 15 South to Township 17 South)						Paddock
Tubb (Township 15 South to Township 17 South)						Glorieta
Blinbry (Township 15 South to Township 17 South)						San Andres
Paddock (Township 15 South to Township 17 South)						Grayburg
Glorieta						Grayburg-San Andres
San Andres						Queen
Queen (Township 15 South to Township 17 South)						Seven Rivers
Seven Rivers (Township 15 South to Township 17 South)						Yates
Yates (Township 15 South to Township 17 South)						Base of Salt
Base of Salt						Rustler
Rustler						

EXHIBIT "A"
CASE 9316
ORDER R-111-P

CONSOLIDATED LAND **DESCRIPTION** OF THE KNOWN POTASH
LEASING AREA, AS OF FEBRUARY 3, 1988

EDDY COUNTY, NEW MEXICO

TOWNSHIP 18 SOUTH, RANGE 30 EAST, NMPM

Section 10: SE/4 SE/4
Section 11: S/2 SW/4
Section 13: W/2 SW/4 and SE/4 SW/4
Section 14: W/2 NE/4, NW/4 and S/2
Section 15: E/2 NE/4, SE/4 SW/4 and SE/4
Section 22: N/2, N/2 SW/4, SE/4 SW/4 and SE/4
Section 23: All
Section 24: N/2 NW/4, SW/4 NW/4 and NW/4 SW/4
Section 26: NE/4, N/2 NW/4 and SE/4 NW/4
Section 27: N/2 NE/4 and NE/4 NW/4

TOWNSHIP 19 SOUTH, RANGE 29 EAST, NMPM

Section 11: SE/4 SE/4
Section 12: SE/4 NE/4 and S/2
Section 13: All
Section 14: NE/4, SE/4 NW/4 and S/2
Section 15: SE/4 SE/4
Section 22: NE/4, E/2 W/2 and SE/4
Section 23: All
Section 24: All
Section 25: NW/4 NW/4
Section 26: N/2 NE/4 AND NW/4
Section 27: NE/4 AND E/2 NW/4

TOWNSHIP 19 SOUTH, RANGE 30 EAST, NMPM

Section 2: SW/4
Section 3: W/2 SW/4, SE/4 SW/4, S/2 SE/4 and
NE/4 SE/4
Section 4: Lots 3 and 4. SW/4 NE/4, S/2 NW/4
and S/2
Section 5: Lots 1, 2. and 3, S/2 NE/4,
S/2 NW/4 and S/2
Section 6: S/2 SE/4 and NE/4 SE/4
Sections 7 to 10 inclusive
Section 11: S/2 NE/4, NW/4 NW/4 and S/2
Section 12: NE/4, S/2 NW/4 and S/2
Section 13: NE/4, W/2, N/2 SE/4 and SW/4 SE/4
Sections 14 to 18 inclusive
Section 19: Lots 1, 2, and 3, NE/4, E/2 NW/4,
NE/4 SW/4, E/2 SE/4 and
NW/4 SE/4
Sections 20 to 23 inclusive

Section 24: NW/4. NW/4 SW/4 and S/2 SW/4

Section 25: NW/4 NW/4
 Section 26: NE/4 NE/4, W/2 NE/4, W/2, W/2 SE/4
 and SE/4 SE/4
 Section 27: All
 Section 28: All
 Section 29: E/2, E/2 NW/4 and NW/4 NW/4
 Section 32: E/2 and SE/4 SW/4
 Section 33 to 35 inclusive
 Section 36: NW/4 NW/4, S/2 NW/4 and S/2

TOWNSHIP 19 SOUTH, RANGE 31 EAST, NMPM

Section 7: Lots 1, 2, and 3 and E/2 NW/4
 Section 18: Lots 1, 2, and 3 and SW/4 NE/4,
 E/2 NW/4 and NE/4 SW/4
 Section 31: Lot 4
 Section 34: SE/4 SE/4
 Section 35: S/2 SW/4 and SW/4 SE/4
 Section 36: S/2 SE/4

LEA COUNTY, NEW MEXICO**TOWNSHIP 19 SOUTH, RANGE 32 EAST, NMPM**

Section 31: Lot 4
 Section 33: Lots 1 to 4 inclusive and N/2 S/2
 Section 34: Lots 1 to 4 inclusive and N/2 S/2
 Section 35: Lots 1 to 4 inclusive and N/2 S/2
 Section 36: Lots 1 to 4 inclusive, SE/4 NE/4,
 NW/4 SW/4 and NE/4 SE/4

TOWNSHIP 19 SOUTH, RANGE 33 EAST, NMPM

Section 22: SE/4 NE/4, E/2 SW/4 and SE/4
 Section 23: S/2 NW/4, SW/4, W/2 SE/4 and
 SE/4 SE/4
 Section 25: SW/4 NW/4, W/2 SW/4 and SE/4 SW/4
 Section 26: All
 Section 27: All
 Section 28: S/2 SE/4 and NE/4 SE/4
 Section 30: Lots 2 to 4 inclusive, S/2 NE/4,
 SE/4 NW/4, E/2 SW/4 and SE/4
 Section 31: All
 Section 32: NE/4, S/2 NW/4 and S/2
 Sections 33 to 35 inclusive
 Section 36: W/2 NE/4, SE/4 NE/4, NW/4 and S/2

TOWNSHIP 19 SOUTH, RANGE 34 EAST, NMPM

Section 31: Lots 3 and 4

EDDY COUNTY, NEW MEXICO

TOWNSHIP 20 SOUTH, RANGE 29 EAST, NMPM

Section 1: SE/4 NE/4 and E/2 SE/4
 Section 13: SW/4 NW/4, W/2 SW/4 AND SE/4 SW/4
 Section 14: NW/4 NE/4, S/2 NE/4, NW/4 and S/2
 Section 15: E/2 E/2, SE/4 SW/4 and W/2 SE/4
 Section 22: E/2 and E/2 NW/4
 Section 23: All
 Section 24: SW/4 NE/4, W/2, W/2 SE/4
 and SE/4 SE/4
 Section 25: N/2, SW/4, W/2 SE/4 and NE/4 SE/4
 Section 26: All
 Section 27: E/2
 Section 34: NE/4
 Section 35: N/2
 Section 36: W/2 NE/4 AND NW/4

TOWNSHIP 20 SOUTH, RANGE 30 EAST, NMPM

Sections 1 to 4 inclusive
 Section 5: Lots 1 to 3 inclusive, S/2 N/2
 and S/2
 Section 6 Lots 5, 6, and 7, S/2 NE/4, E/2 SW/4
 and SE/4
 Section 7 Lots 1 and 2. E/2 and E/2 NW/4
 Sections 8 to 17 inclusive
 Section 18 E/2
 Section 19 E/2 and SE/4 SW/4
 Sections 20 to 29 inclusive
 Section 30: Lots 1 to 3 inclusive, E/2 and
 E/2 W/2
 Section 31 E/4 and E/2 SE/4
 Sections 32 to 35 inclusive

TOWNSHIP 20 SOUTH, RANGE 31 EAST, NMPM

Section 1 Lots 1 to 3 inclusive, S/2 N/2
 and S/2
 Section 2: All
 Section 3: Lots 1 and 2, S/2 NE/4 and SE/4
 Section 6: Lots 4 to 7 inclusive, SE/4 NW/4,
 E/2 SW/4, W/2 SE/4 and
 SE/4 SE/4
 Section 7: All
 Section 8: S/2 N/2 and S/2
 Section 9: S/2 NW/4, SW/4, W/2 SE/4 and SE/4 SE/4
 Section 10: E/2 and SW/4
 Section 11 to 36 inclusive

LEA COUNTY, NEW MEXICO

TOWNSHIP 20 SOUTH, RANGE 32 EAST, NMPM

Sections 1 to 4 inclusive

Section 5: S/2 SE/4

Section 6: Lots 4 to 7 inclusive, SE/4 NW/4,
E/2 SW/4 and SW/4 SE/4

Sections 7 to 36 inclusive

TOWNSHIP 20 SOUTH, RANGE 33 EAST, NMPM

Sections 1 to 36 inclusive

TOWNSHIP 20 SOUTH, RANGE 34 EAST, NMPMSection 6: Lots 3 to 7 inclusive, SE/4 NE/4,
E/2SW/4, W/2 SE/4 AND
SE/4 SE/4

Section 7: All

Section 8: SW/4, S/2 NW/4, W/2 SE/4 and
SE/4 SE/4Section 16: W/2 NW/4, SE/4 NW/4, SW/4 and
S/2 SE/4

Sections 17 to 21 inclusive

Section 22: N/2 NW/4, SW/4 NW/4, W/2 SE/4,
and SE/4 SE/4

Section 26: SW/4, W/2 SE/4 and SE/4 SE/4

Sections 27 to 35 inclusive

Section 36: SW/4 NW/4 and W/2 SW/4

EDDY COUNTY, NEW MEXICO

TOWNSHIP 21 SOUTH, RANGE 29 EAST, NMPM

Sections 1 to 3 inclusive

Section 4: Lots 1 through 16, NE/4 SW/4 and
SE/4

Section 5: Lot 1

Section 10: N/2 NE/4, SE/4 NE/4 and SE/4 SE/4

Sections 11 to 14 inclusive

Section 15: E/2 NE/4 and NE/4 SE/4

Section 23: N/2 NE/4

Section 24: E/2, N/2NW/4 and SE/4NW/4

Section 25: NE/4 NE/4 and S/2 SE/4

Section 35: Lots 2 to 4 inclusive, S/2 NE/4,
NE/4 SW/4 and N/2 SE/4Section 36: Lots 1 to 4 inclusive, NE/4,
E/2 NW/4 AND N/2 S/2**TOWNSHIP 21 SOUTH, RANGE 30 EAST, NMPM**

Sections 1 to 36 inclusive

TOWNSHIP 21 SOUTH, RANGE 31 EAST, NMPM
Sections 1 to 36 inclusive**LEA COUNTY, NEW MEXICO****TOWNSHIP 21 SOUTH, RANGE 32 EAST, NMPM**

Sections 1 to 27 inclusive

Section 28: N/2 and N/2 S/2

Sections 29 to 31 inclusive

Section 32: NW/4 NE/4, NW/4 and NW/4 SW/4

Section 34: N/2 NE/4

Section 35: N/2 N/2

Section 36: E/2, N/2 NW/4, SE/4 NW/4 and
NE/4 SW/4**TOWNSHIP 21 SOUTH, RANGE 33 EAST, NMPM**Section 1: Lots 2 to 7 inclusive, Lots 10
to 14 inclusive, N/2 SW/4 and
SW/4 SW/4

Sections 2 to 11 inclusive

Section 12: NW/4 NW/4 and SW/4 SW/4

Section 13: N/2 NW/4, S/2 N/2 and S/2

Sections 14 to 24 inclusive

Section 25: N/2. SW/4 and W/2 SE/4

Sections 26 to 30 inclusive

Section 31: Lots 1 to 4 inclusive, NE/4,
E/2 W/2, N/2 SE/4 and
SW/4 SE/4

Section 32: N/2 and NW/4 SW/4

Section 33: N/2

Section 34: NE/4, N/2 NW/4 and E/2 SE/4

Section 35: All

Section 36: W/2 NE/4, NW/4 and S/2

TOWNSHIP 21 SOUTH, RANGE 34 EAST, NMPM**Section 17:** W/2**Section 18:** AllSection 19: Lots 1 to 4 inclusive, NE/4,
E/2 W/2, N/2 SE/4 and
SW/4 SE/4**Section 20:** NW/4 NW/4

Section 30: Lots 1 and 2 and NE/4 NW/4

Section 31: Lots 3 and 4

EDDY COUNTY, NEW MEXICO**TOWNSHIP 22 SOUTH, RANGE 28 EAST, NMPM**

Section 36: E/2 E/2

TOWNSHIP 22 SOUTH, RANGE 29 EAST, NMPM

Sections 1 and 2 inclusive

Section 3 SE/4 SW/4 and SE/4

Section 9 S/2 NE/4 and S/2

Sections 10 to 16 inclusive

Section 17 S/2 SE/4

Section 19 SE/4 NE/4 and E/2 SE/4

Sections 20 to 28 inclusive

Section 29 N/2 N/2, S/2 NE/4 and SE/4

Section 30 NE/4 NE/4

Section 31 Lots 1 to 4 inclusive, S/2 NE/4,
E/2 W/2 and SE/4

Sections 32 to 36 inclusive

TOWNSHIP 22 SOUTH, RANGE 30 EAST, NMPM

Sections 1 to 36 inclusive

TOWNSHIP 22 SOUTH, RANGE 31 EAST, NMPM

Sections 1 to 11 inclusive

Section 12: NW/4 NE/4, NW/4 and NW/4 SW/4

Section 13: S/2 NW/4 and SW/4

Sections 14 through 23 inclusive

Section 24: W/2

Section 25: NW/4

Section 26: NE/4 AND N/2 NW/4

Sections 27 to 34 inclusive

LEA COUNTY, NEW MEXICO**TOWNSHIP 22 SOUTH, RANGE 32 EAST, NMPM**

Section 1: Lot 1

Section 6: Lots 2 to 7 inclusive and SE/4 NW/4

TOWNSHIP 22 SOUTH, RANGE 33 EAST NMPMSection 1: Lots 1 to 4 inclusive, S/2 N/2 and
N/2 S/2

Section 2: All

Section 3: Lot 1, SE/4 NE/4 and SE/4

Section 6: Lot 4

Section 10: NE/4

Section 11: NW/4 NE/4 AND NW/4

TOWNSHIP 22 SOUTH, RANGE 34 EAST NMPM

Section 6: Lots 4 to 6 inclusive

EDDY COUNTY, NEW MEXICO

TOWNSHIP 23 SOUTH, RANGE 28 EAST, NMPM

Section 1: Lot 1

TOWNSHIP 23 SOUTH, RANGE 29 EAST, NMPM

Sections 1 to 5 inclusive

Section 6: Lots 1 to 6 inclusive, S/2 NE/4,
SE/4 NW/4, E/2 SW/4 and SE/4

Section 7: NE/4 and NE/4 NW/4

Section 8: N/2, N/2 SW/4, SE/4 SW/4 and SE/4

Sections 9 to 16 inclusive

Section 17: NE/4 and E/2 SE/4

Sections 21 to 23 inclusive

Section 24: N/2, SW/4 and N/2 SE/4

Section 25: W/2 NW/4 and NW/4 SW/4

Section 26: All

Section 27: All

Section 28: N/2, N/2 SW/4, SE/4 SW/4 and SE/4

Section 33: N/2 NE/4 and NE/4 NW/4

Section 34: NE/4, E/2 NW/4, NW/4 NW/4,
NE/4 SW/4 and SE/4

Section 35: All

Section 36: W/2 NE/4, NW/4 and N/2 SW/4

TOWNSHIP 23 SOUTH, RANGE 30 EAST, NMPM

Sections 1 to 18 inclusive

Section 19: N/2, N/2 SW/4, SE/4 SW/4 and SE/4

Section 20: All

Section 21: All

Section 22: N/2, S/2 SW/4, N/2 S/2 and SE/4 SE/4

Sections 23 to 25 inclusive

Section 26: E/2, SE/4 NW/4 and SW/4

Section 27: N/2 NW/4, SW/4 NW/4, SE/4 SW/4,
S/2 SE/4 and NE/4 SE/4

Section 28: N/2 and SW/4 Section 29 N/2 and SE/4

Section 30: N/2 NE/4

Section 32: N/2 NE/4

Section 33: SE/4 NE/4, N/2 NW/4, NE/4 SE/4
and S/2 SE/4

Sections 34 to 36 inclusive

TOWNSHIP 23 SOUTH, RANGE 31 EAST, NMPM**Section 2:** Lot 4, SW/4 NW/4 and W/2 SE/4

Sections 3 to 7 inclusive

Section 8: NE/4 NE/4, W/2 NE/4 and W/2

Section 9: N/2 N/2

Section 10: NW/4 NW/4 and SE/4 SE/4

Section 11: S/2 NE/4, S/2 SW/4 and SE/4

Section 12: SW/4 NW/4 and SW/4
Section 13: SW/4 **NE/4**, W/2 and W/2 SE/4
Section 14: All
Section 15: E/2, SE/4 NW/4 and **SW/4**
Section 16: SW/4 and S/2 SE/4
Section 17: NW/4 and S/2
Sections 18 to 23 inclusive
Section 24: W/2 NE/4 and W/2
Section 25: W/2 NE/4, NW/4, N/2 SW/4 and
 NW/4 SE/4
Section 26 to 34 inclusive
Section 35: N/2 NW/4 and SW/4 NW/4

TOWNSHIP 24 SOUTH, RANGE 29 EAST, NMPM

Section 2: Lots 2 to 4 inclusive
Section 3: Lot 1

TOWNSHIP 24 SOUTH, RANGE 30 EAST, NMPM

Section 1: Lots 1 to 4 inclusive, S/2 N/2,
 SW/4 and NW/4 SE/4
Section 2: All
Section 3: All
Section 4: Lots 1 and 2, S/2 NE/4, SE/4 NW/4,
 SW/4 SW/4, E/2 SW/4 and SE/4
Section 9: N/2, N/2 SW/4, SE/4 SW/4 and SE/4
Section 10: All
Section 11: All
Section 12: W/2 NW/4 and NW/4 SW/4
Section 14: W/2 NE/4 and **NW/4**
Section 15: NE/4 and N/2 NW/4

TOWNSHIP 24 SOUTH, RANGE 31 EAST, NMPM

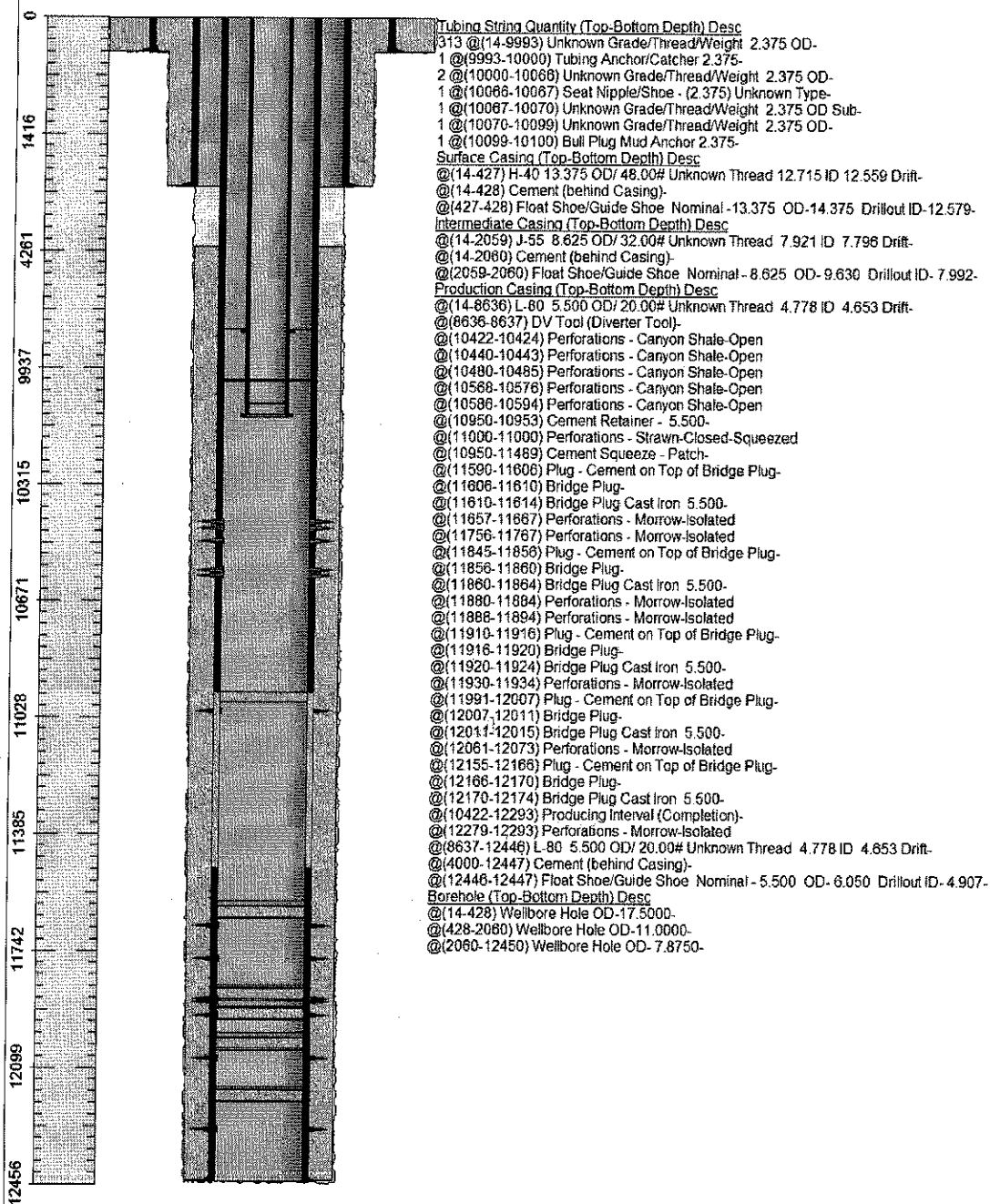
Section 3: Lots 2 to 4 inclusive, SW/4 NE/4,
 S/2 NW/4, SW/4 and W/2 SE/4
Section 4: All
Section 5: Lots 1 to 4 inclusive, S/2 N/2,
 N/2 S/2 and SE/4 SE/4
Section 6: Lots 1 to 6 inclusive, S/2 NE/4,
 SE/4 NW/4, NE/4 SW/4 and
 N/2 SE/4
Section 9: E/2 and NW/4
Section 10: W/2 NE/4 and W/2
Section 35: Lots 1 to 4 inclusive, S/2 N/2 and
 N/2 S/2
Section 36: Lots 1 and 2, SW/4 NW/4 and N/2 SW/4

TOWNSHIP 25 SOUTH, RANGE 31 EAST, NMPM

Section 1: Lots 3 and 4 and S/2 NW/4
Section 2: Lots 1 to 4 inclusive and S/2 N/2

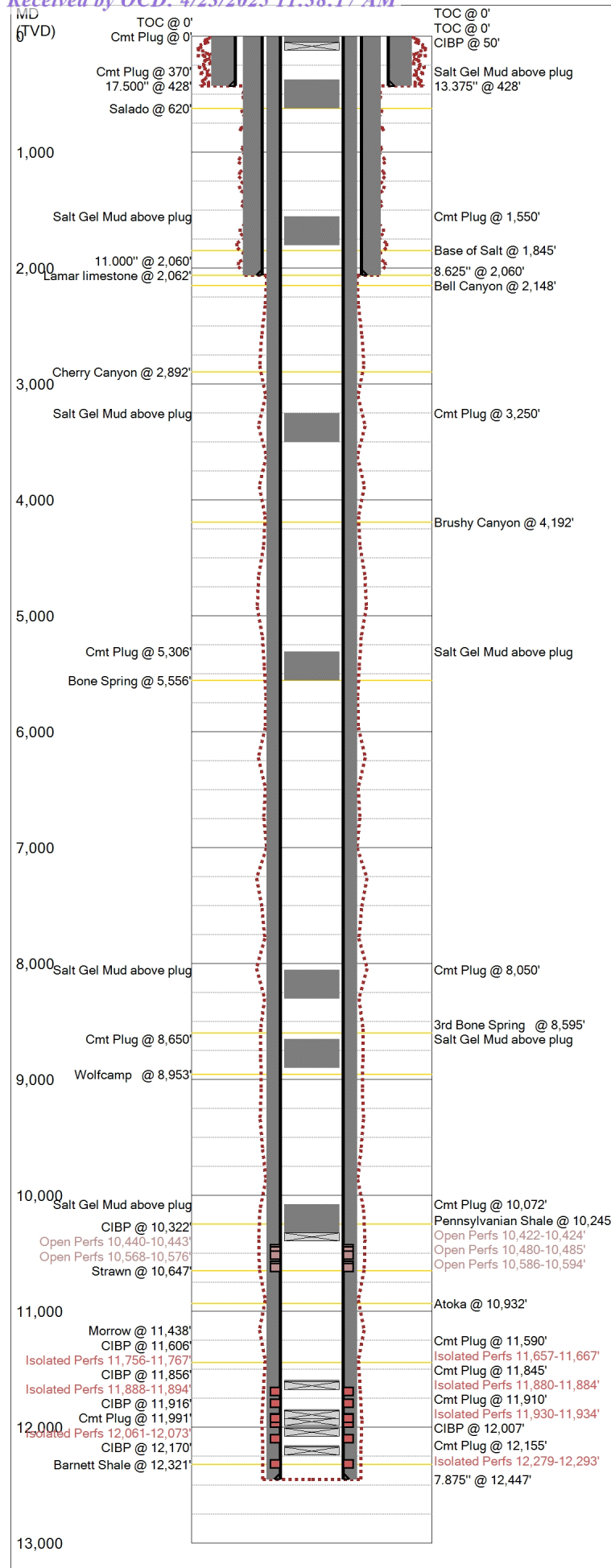
Chevron U.S.A. Inc. Wellbore Diagram : OGDEN 15 1

Lease: OCA CARLSBAD FMT		Well No.: OGDEN 15 1 1	Field: CARLSBAD SOUTH
Location: 990FSL660FWL		Sec.: N/A	Blk:
County: Eddy	St.: New Mexico	Refno: HU6482	Survey: N/A
Section: E027		API: 3001534032	Cost Center: UCU980410
Township: 15 S		Range: S023 E	
Current Status: ACTIVE			Dead Man Anchors Test Date: NONE
Directions:			



Ground Elevation (MSL): 3131.00	Spud Date: 08/11/2005	Compl. Date: 10/13/2005
Well Depth Datum: Kelly Bushing	Elevation (MSL): 3145.00	Correction Factor: 14.00
Last Updated by: DBDelta_V2N_022_D	Date: 07/17/2017	
Platform Elev: 0.00	Water Elev: 0.00	

1-20 net



Last Updated: 5/24/2022 03:52 PM

Field Name		Lease Name			Well No.		
Carlsbad: Morrow, South		Ogden 15			1		
County		State			API No.		
Eddy		New Mexico			3001534032		
Version	Version Tag						
1	Proposed						
GL (ft)	KB (ft)	Section	Township/Block		Range/Survey		
3,131.0		15	23S		27E		
Operator		Well Status		Latitude		Longitude	
Caza Operating				32.3005676		-104.1845245	
Dist. N/S (ft)	N/S Line	Dist. E/W (ft)	E/W Line	Footage From			
990	FSL	660	FWL	SECTION			
Prop Num			Spud Date		Comp. Date		
321452			8/11/2005				
Additional Information							
OGRID		Pool Name and Code		Well Type		Dedicated Acres	
249099		S CARLSBAD MORROW 73960					
Prepared By		Updated By			Last Updated		
Steve Morris		Steve Morris			5/24/2022 3:52 PM		
Hole Summary							
Date	Diam. (in)	Top (MD ft)	Bottom (MD ft)	Comments			
	17.500	0	428				
	11.000	428	2,060				
	7.875	2,060	12,447				
Tubular Summary							
Date	Description		O.D. (in)	Wt (lb/ft)	Grade	Top (MD ft)	Bottom (MD ft)
	Surface Casing		13.375	48.00	J55	0	428
	Intermediate Casing		8.625	32.00	J55	0	2,060
	Production Casing		5.500	20.00	L80	0	12,447
Casing Cement Summary							
C	Date	No. Sx	Csg. O.D. (in)	Top (MD ft)	Bottom (MD ft)	Comments	
			13.375	0	428		
			8.625	0	2,060		
			5.500	0	12,447		
Tools/Problems Summary							
Date	Tool Type		O.D. (in)	I.D. (in)	Top (MD ft)		Bottom (MD ft)
	CIBP		4.778	0.000	50		0
	CIBP		4.778	0.000	10,322		0
	CIBP		4.778	0.000	11,606		0
	CIBP		4.778	0.000	11,856		0
	CIBP		4.778	0.000	11,916		0
	CIBP		4.778	0.000	12,007		0
	CIBP		4.778	0.000	12,170		0
Cement Plug Summary							
Date	No. Sx	O.D. (in)	Top (MD ft)	Bottom (MD ft)	Comments		
		4.778	0	50			
		4.778	370	620	50% excess Class C		
		4.778	1,550	1,800	50% excess Class C		
		4.778	3,250	3,500	50% excess Class C		
		4.778	5,306	5,556	50% excess Class C		

Last Updated: 5/24/2022 03:52 PM

Date	No. Sx	O.D. (in)	Top (MD ft)	Bottom (MD ft)	Comments
		4.778	8,050	8,300	50% excess Class H
		4.778	8,650	8,900	50% excess Class H
		4.778	10,072	10,322	50% excess Class H
		4.778	11,590	11,606	
		4.778	11,845	11,860	
		4.778	11,910	11,920	
		4.778	11,991	12,011	
		4.778	12,155	12,170	

Perforation Summary

C	Date	Perf. Status	Formation	OA Top (MD ft)	OA Bottom (MD ft)
		Open	Canyon	10422	10,424
		Open	Canyon	10440	10,443
		Open	Canyon	10480	10,485
		Open	Canyon	10568	10,576
		Open	Canyon	10586	10,594
		Isolated	Morrow	11657	11,667
		Isolated	Morrow	11756	11,767
		Isolated	Morrow	11880	11,884
		Isolated	Morrow	11888	11,894
		Isolated	Morrow	11930	11,934
		Isolated	Morrow	12061	12,073
		Isolated	Morrow	12279	12,293

Formation Tops Summary

Formation	Top (TVD ft)	Comments
Salado	620	
Base of Salt	1,845	
Lamar limestone	2,062	
Bell Canyon	2,148	
Cherry Canyon	2,892	
Brushy Canyon	4,192	
Bone Spring	5,556	
3rd Bone Spring	8,595	
Wolfcamp	8,953	
Pennsylvanian Shale	10,245	
Strawn	10,647	
Atoka	10,932	
Morrow	11,438	
Barnett Shale	12,321	

Last Updated: 5/24/2022 03:52 PM

Field Name		Lease Name		Well No.	County		State		API No.	
Carlsbad: Morrow, South		Ogden 15		1	Eddy		New Mexico		3001534032	
Version	Version Tag					Spud Date		Comp. Date	GL (ft)	KB (ft)
1	Proposed					8/12/2005			3,131.0	
Section	Township/Block		Range/Survey		Dist. N/S (ft)	N/S Line	Dist. E/W (ft)	E/W Line	Footage From	
15	23S		27E		660	FSL	1,980	FEL	SECTION	
Operator			Well Status			Latitude		Longitude		Prop Num
Caza Operating						32.3005676		-104.1845245		321452
OGRID		Pool Name and Code			Well Type				Dedicated Acres	
249099		S CARLSBAD MORROW 73960								
Last Updated		Prepared By				Updated By				
05/24/2022 3:52 PM		Steve Morris				Steve Morris				

Hole Summary

Date	Diam. (in)	Top (MD ft)	Bottom (MD ft)	Comments
	17.500	0	428	
	11.000	428	2,060	
	7.875	2,060	12,447	

Tubular Summary

Date	Description	No. Jts	O.D. (in)	Wt (lb/ft)	Grade	Coupling	Top (MD ft)	Bottom (MD ft)	Comments
	Surface Casing		13.375	48.00	J55	STC	0	428	
	Intermediate Casing		8.625	32.00	J55	LTC	0	2,060	
	Production Casing		5.500	20.00	L80	BTC	0	12,447	

Casing Cement Summary

C	Date	No. Sx	Yield (ft3/sk)	Vol. (ft3)	Csg. O.D. (in)	Top (MD ft)	Bottom (MD ft)	Description	Comments
			1.00		13.375	0	428		
			1.00		8.625	0	2,060		
			1.00		5.500	0	12,447		

Tools/Problems Summary

Date	Tool Type	O.D. (in)	I.D. (in)	Top (MD ft)	Bottom (MD ft)	Description	Comments
	Cast Iron Bridge Plug	4.778	0.000	50	0		
	Cast Iron Bridge Plug	4.778	0.000	10,322	0		
	Cast Iron Bridge Plug	4.778	0.000	11,606	0		
	Cast Iron Bridge Plug	4.778	0.000	11,856	0		
	Cast Iron Bridge Plug	4.778	0.000	11,916	0		
	Cast Iron Bridge Plug	4.778	0.000	12,007	0		
	Cast Iron Bridge Plug	4.778	0.000	12,170	0		

Cement Plug Summary

Date	No. Sx	O.D. (in)	Top (MD ft)	Bottom (MD ft)	Comments
		4.778	0	50	
		4.778	370	620	50% excess Class C
		4.778	1,550	1,800	50% excess Class C
		4.778	3,250	3,500	50% excess Class C
		4.778	5,306	5,556	50% excess Class C
		4.778	8,050	8,300	50% excess Class H
		4.778	8,650	8,900	50% excess Class H
		4.778	10,072	10,322	50% excess Class H
		4.778	11,590	11,606	
		4.778	11,845	11,860	
		4.778	11,910	11,920	
		4.778	11,991	12,011	

Last Updated: 5/24/2022 03:52 PM

Date	No. Sx	O.D. (in)	Top (MD ft)	Bottom (MD ft)	Comments		
		4.778	12,155	12,170			
Perforation Summary							
C	Date	Perf. Status	Formation		Closed Date	Comments	
		Open	Canyon			Stage 1	
Top (MD ft)		Bottom (MD ft)		SPF	Shots	Phasing (deg)	Interval Comments
10422		10,424		4	8	60	
C	Date	Perf. Status	Formation		Closed Date	Comments	
		Open	Canyon			Stage 2	
Top (MD ft)		Bottom (MD ft)		SPF	Shots	Phasing (deg)	Interval Comments
10440		10,443		4	12	60	
C	Date	Perf. Status	Formation		Closed Date	Comments	
		Open	Canyon			Stage 3	
Top (MD ft)		Bottom (MD ft)		SPF	Shots	Phasing (deg)	Interval Comments
10480		10,485		4	20	60	
C	Date	Perf. Status	Formation		Closed Date	Comments	
		Open	Canyon			Stage 4	
Top (MD ft)		Bottom (MD ft)		SPF	Shots	Phasing (deg)	Interval Comments
10568		10,576		4	32	60	
C	Date	Perf. Status	Formation		Closed Date	Comments	
		Open	Canyon			Stage 5	
Top (MD ft)		Bottom (MD ft)		SPF	Shots	Phasing (deg)	Interval Comments
10586		10,594		4	32	60	
C	Date	Perf. Status	Formation		Closed Date	Comments	
		Isolated	Morrow			Stage 6	
Top (MD ft)		Bottom (MD ft)		SPF	Shots	Phasing (deg)	Interval Comments
11657		11,667		4	40	60	
C	Date	Perf. Status	Formation		Closed Date	Comments	
		Isolated	Morrow			Stage 7	
Top (MD ft)		Bottom (MD ft)		SPF	Shots	Phasing (deg)	Interval Comments
11756		11,767		4	44	60	
C	Date	Perf. Status	Formation		Closed Date	Comments	
		Isolated	Morrow			Stage 8	
Top (MD ft)		Bottom (MD ft)		SPF	Shots	Phasing (deg)	Interval Comments
11880		11,884		4	16		
C	Date	Perf. Status	Formation		Closed Date	Comments	
		Isolated	Morrow			Stage 9	
Top (MD ft)		Bottom (MD ft)		SPF	Shots	Phasing (deg)	Interval Comments
11888		11,894		4	24	60	
C	Date	Perf. Status	Formation		Closed Date	Comments	
		Isolated	Morrow			Stage 10	
Top (MD ft)		Bottom (MD ft)		SPF	Shots	Phasing (deg)	Interval Comments
11930		11,934		4	16	60	
C	Date	Perf. Status	Formation		Closed Date	Comments	
		Isolated	Morrow			Stage 11	
Top (MD ft)		Bottom (MD ft)		SPF	Shots	Phasing (deg)	Interval Comments
12061		12,073		4	48	60	
C	Date	Perf. Status	Formation		Closed Date	Comments	

Last Updated: 5/24/2022 03:52 PM

C	Date	Perf. Status	Formation	Closed Date	Comments
		Isolated	Morrow		Stage 12
Top (MD ft)	Bottom (MD ft)	SPF	Shots	Phasing (deg)	Interval Comments
12279	12,293	4	56	60	
Formation Top Summary					
Formation Name	Top(TVD ft)	Comments			
Salado	620				
Base of Salt	1,845				
Lamar limestone	2,062				
Bell Canyon	2,148				
Cherry Canyon	2,892				
Brushy Canyon	4,192				
Bone Spring	5,556				
3rd Bone Spring	8,595				
Wolfcamp	8,953				
Pennsylvanian Shale	10,245				
Strawn	10,647				
Atoka	10,932				
Morrow	11,438				
Barnett Shale	12,321				

Sante Fe Main Office
Phone: (505) 476-3441

General Information
Phone: (505) 629-6116

Online Phone Directory
<https://www.emnrd.nm.gov/ocd/contact-us>

State of New Mexico
Energy, Minerals and Natural Resources
Oil Conservation Division
1220 S. St Francis Dr.
Santa Fe, NM 87505

CONDITIONS

Action 454835

CONDITIONS

Operator: CAZA OPERATING, LLC 200 N Loraine St Midland, TX 79701	OGRID: 249099
	Action Number: 454835
	Action Type: [C-103] NOI Plug & Abandon (C-103F)

CONDITIONS

Created By	Condition	Condition Date
gcordero	Adhere to current Plug & Abandon (P&A) Conditions Of Approvals (COA).	4/23/2025
gcordero	A Cement Bond Log (CBL) is required to be submitted to electronic permitting.	4/23/2025
gcordero	Submit Cement Bond Logs (CBL) prior to submittal of C-103P.	4/23/2025