

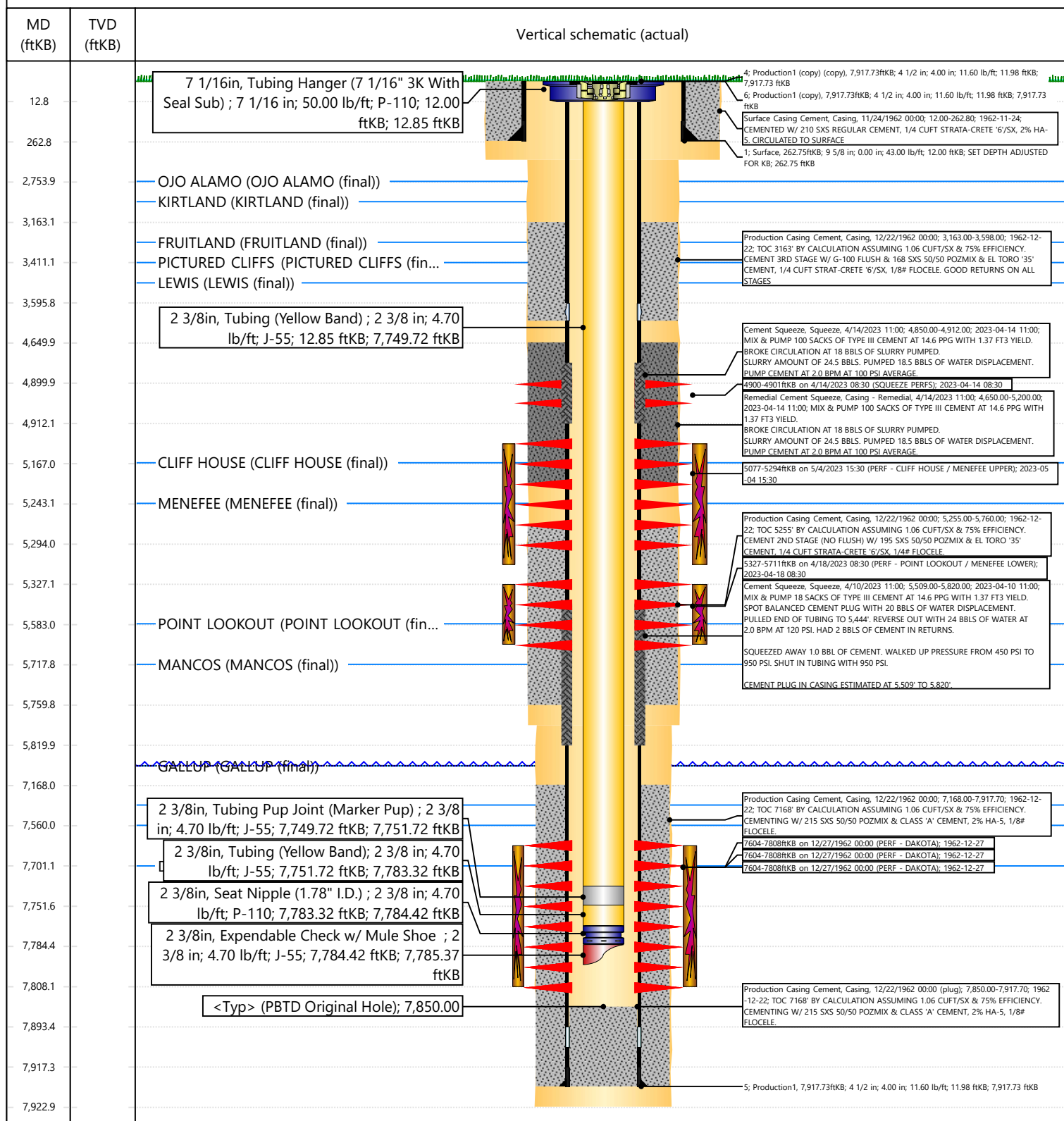


Current Schematic - Version 3

Well Name: SAN JUAN 28-5 UNIT #65

| | | | | | |
|-----------------------------------|---|---|------------------------------------|--------------------------------|--|
| API / UWI 3003907309 | Surface Legal Location 028-028N-005W-K | Field Name BASIN DAKOTA (PRORATED GAS) | Route 1309 | State/Province NEW MEXICO | Well Configuration Type VERTICAL |
| Ground Elevation (ft) 6,568.00 | Original KB/RT Elevation (ft) 6,580.00 | Tubing Hanger Elevation (ft) | RKB to GL (ft) 12.00 | KB-Casing Flange Distance (ft) | KB-Tubing Hanger Distance (ft) |
| Tubing Strings | | | | | |
| Run Date 5/14/2023 09:30 | Set Depth (ftKB) 7,785.37 | String Max Nominal OD (in) 2 3/8 | String Min Nominal ID (in) 2.00 | Weight/Length (lb/ft) 4.70 | Original Spud Date 11/23/1962 00:00 |

Original Hole [VERTICAL]



Sante Fe Main Office
Phone: (505) 476-3441

General Information
Phone: (505) 629-6116

Online Phone Directory
<https://www.emnrd.nm.gov/oed/contact-us>

State of New Mexico
Energy, Minerals and Natural Resources
Oil Conservation Division
1220 S. St Francis Dr.
Santa Fe, NM 87505

CONDITIONS

Action 452796

CONDITIONS

| | |
|--|---|
| Operator: HILCORP ENERGY COMPANY 1111 Travis Street Houston, TX 77002 | OGRID: 372171 |
| | Action Number: 452796 |
| | Action Type: [UF-WBS] Wellbore Schematic (WELLBORE SCHEMATICS) |

CONDITIONS

| Created By | Condition | Condition Date |
|------------|---------------------|----------------|
| mkuehling | approved for record | 5/1/2025 |