

Well Name: CANYON	Well Location: T25N / R11W / SEC 3 / SWSE / 36.424881 / -107.988083	County or Parish/State: SAN JUAN / NM
Well Number: 5	Type of Well: CONVENTIONAL GAS WELL	Allottee or Tribe Name: EASTERN NAVAJO
Lease Number: N00C14203597	Unit or CA Name: CANYON E/2, MANCOS - E2	Unit or CA Number: NMNM112647, NMNM75913
US Well Number: 3004521315	Operator: HILCORP ENERGY COMPANY	

Subsequent Report

Sundry ID: 2849261

Type of Submission: Subsequent Report

Date Sundry Submitted: 04/24/2025

Date Operation Actually Began: 07/16/2024

Type of Action: Plug and Abandonment

Time Sundry Submitted: 09:39

Actual Procedure: Hilcorp Energy Company plugged and abandoned the subject well on 04/14/2025 per the attached daily reports & schematic.

SR Attachments

- Actual Procedure
- Hilcorp_canyon_005_cbl_pdf_20250424093820.pdf

CANYON_5_SR_20250424093748.pdf

Well Name: CANYON	Well Location: T25N / R11W / SEC 3 / SWSE / 36.424881 / -107.988083	County or Parish/State: SAN JUAN / NM
Well Number: 5	Type of Well: CONVENTIONAL GAS WELL	Allottee or Tribe Name: EASTERN NAVAJO
Lease Number: N00C14203597	Unit or CA Name: CANYON E/2, MANCOS - E2	Unit or CA Number: NMNM112647, NMNM75913
US Well Number: 3004521315	Operator: HILCORP ENERGY COMPANY	

Operator

I certify that the foregoing is true and correct. Title 18 U.S.C. Section 1001 and Title 43 U.S.C. Section 1212, make it a crime for any person knowingly and willfully to make to any department or agency of the United States any false, fictitious or fraudulent statements or representations as to any matter within its jurisdiction. Electronic submission of Sundry Notices through this system satisfies regulations requiring a

Operator Electronic Signature: TAMMY JONES

Signed on: APR 24, 2025 09:38 AM

Name: HILCORP ENERGY COMPANY

Title: Regulatory Compliance Specialist

Street Address: 382 ROAD 3100

City: AZTECState: NM

Phone: (505) 324-5185

Email address: TAJONES@HILCORP.COM

Field

Representative Name:

Street Address:

City:State:Zip:

Phone:

Email address:

BLM Point of Contact

BLM POC Name: MATTHEW H KADE

BLM POC Title: Petroleum Engineer

BLM POC Phone: 5055647736

BLM POC Email Address: MKADE@BLM.GOV

Disposition: Accepted

Disposition Date: 04/24/2025

Signature: Matthew Kade

CANYON 5**30.045.21315****PLUG & ABANDONMENT**

7/16/2024 – MIRU. CHECK PSI ON WELL SITP 0#, SICP 0#, SIICP N/A, BH 140#, BDW 1 MIN. BH STILL BLOWING AFTER BDW. REALLY LOW PSI. INFORMED ENGINEER OF 140 PSI ON BH WHEN WE ARRIVED ON LOCATION. SISW, DEBRIEF CREW & SDFN.

7/17/2024 – CHECK PSI ON WELL SITP 0#, SICP 0#, SIICP N/A, BH 130#, BDW 1 MIN. AFTER BLOWING DOWN BH. STILL BLOWING @ A LOW PSI. LD 1 POLISH RODE, 2 PONY RODS 7/8", 69 GUIDE 7/8", 85 RODS 3/4", 40 M-GUIDES 3/4", 8 K-BARS 1-1/4", 1 SPIRAL RODE & INSERT. WH ONLY HAD A B1 FLANG WITH NO TBG HANGER UNDERNETH. INFORMED ENGINEER. GOT THE OK PU FLANG & SET SLIPS UNDER B1 FLANG. PUMP DOWN CASING & TBG BEFORE WITH FW. PU TBG @ 18K TO SET SLIPS BUT DROPPED TO 10K. (PROD TBG MAYBE PARTED) NU BOP, PRESSURE TEST & FUNCTION TEST BOP & RU RIG FLOOR. NEVER GOT TBG ANCHOR TO RELEASE. STRING WEIGHT TO LOW @ 10K SUPPOSE TO BE @ 24K. INFORMED ENGINEER. TOLD TO TOO H & SEE WHAT WE GOT. LD 104 JTS OF 2.375" PROD TBG ONTO TRAILER & JT 105 WAS PARTED 1.5' BELOW COLLAR. TBG WAS PRETTY THINED OUT WHERE IT PARTED ALSO THE COLLAR ABOVE IT WAS FALLING APART ALSO. CALL IN FINDINGS TO ENGINEER. ESTIMATED FISH TOP @ 3247'. TOTAL OF 1924' OF PROD TBG STILL IN WELL. SISW, DEBRIEF CREW & SDFN.

7/18/2024 – CHECK PSI ON WELL SITP 0#, SICP 0#, SIICP N/A, BH 78#, BDW 1 MINS. AFTER BLOWING DOWN BH. STILL BLOWING @ A LOW PSI. MU 4-11/16" OVERSHOT W/2-3/8" GRAPPLE & CHANGE OVERS BACK TO 2.375" TBG. TOTAL BHA 4'. PU 105 JTS OF 2.375" TBG TO 3247' & DID NOT TAG ESTIMATED TOP OF FISH. KEEP PU TBG. TALLEY & RABBIT TBG. FINALLY TAG TOP OF FISH @ 3297'. LATCH ONTO FISH. PULL TO 34K ON SW & BACK DOWN TO 27K. TRYED TO RELEASE ANCHOR BUT STRING WEIGHT FELL TO 12K. DECIDED TO PULL TBG. TOO H 52 STDS OF 2.375" TBG & 1 JT. HAD FISH IN GRAPPLE. START LD 44 JTS OF FISH ONTO TRAILER. MU 4-11/16" OVERSHOT W/2-3/8" GRAPPLE & CHANGE OVERS. TIH 52 STDS OF 2.375" TBG. CONTINUE PU 46 JTS OF 2.375" TBG TO 4694' & TAG FISH. TRYED TO LATCH ONTO FISH BUT NO SUCCESS. TRYED SEVERAL TIMES BUT NEVER GOT FULL SW. TOO H 75 STDS. CHECK OVERSHOT & GRAPPLE (GOOD). STILL HAVE 15 JTS OF PROD TBG & ANCHOR. ESTIMATED TOF @ 4694'. SISW, DEBRIEF CREW & SDFN.

7/19/2024 – CHECK PSI ON WELL SITP 0#, SICP 0#, SIICP N/A, BH 55#, BDW 1 MINS. AFTER BLOWING DOWN BH. STILL BLOWING @ A LOW PSI. MU 4-11/16" OVERSHOT W/2-3/8" GRAPPLE, EXTENSION & CHANGE OVERS BACK TO 2.375" TBG. TOTAL BHA 12.97'. TIH 75 STDS OF 2.375" TBG TO TOF @ 4686'. RU SWIVEL & START ROTATING ON TOP OF FISH WITH CARBITE CONTROL. LATCHED ONTO FISH & WORKED PIPE TO RELEASE ANCHOR. PULLED TO 34K, TURNED TBG WITH SWIVEL WHILE WORKING PIPE & RELEASED ANCHOR. ANCHOR DRAGGED FOR 2 JTS WHEN POOH. TOO H 75 STDS OF 2.375" TBG & HAD FISH IN GRAPPLE. LD FISHING TOOLS. LD LAST 15 JTS OF PROD TBG W/ANCHOR. HEAVY SCALE ON LAST 15 JTS. MU 5.5" STRING MILL & BIT. TIH 75 STDS OF 2.375" TBG. START PU 32 JTS OF 2.375" TBG TO 5710'. (CIBP ALREADY SET @ 5710') TAG UP @ 5655'. (TAG FILL) CIRC WELL W/150 BBLS. RU SWIVEL START ROTATING DOWN FROM 5655'. GOT ALL THE WAY DOWN TO 5710'. LOST CIRC BEFORE GETTING TO 5710'. PULLED BACK UP TO 5681'. STARTED PRESSURING UP. TRYED COMING BACK UP & STARTED TO TORQUE UP ON SWIVEL. SW WENT FROM 24K TO 45K. WORKING PIPE UP & DOWN. @ 5681'. PULL UP TO 5666'. INFORMED ENGINEER AND KEPT WORKING TBG. TOLD TO SHUT DOWN & MAY FREE-POINT MONDAY MORNING. TOTAL OF 180 JTS W/BIT & STRING MILL STILL IN HOLE. EOT @ 5649'. RD SWIVEL. SISW, DEBRIEF CREW & SDFN.

7/22/2024 – TOOK PRESSURES ON WELL. CASING ON A VACUUM. TBG 0 PSI. BH 100 PSI. BLEW DOWN IN 10 SECONDS. WORKED STUCK TUBING. STRING WEIGHT 26,550. PULLED @ 24K OVER STING WEIGHT TUBING WAS FREE. TRIP OUT OF THE HOLE WITH 5 1/2" STRING MILL/ BIT AND 180 JOINTS OF 2 3/8" TUBING FROM A DEPTH OF 5649'. TRIP IN HOLE WITH 2 3/8" WORK STRING AND CEMENT TAG SUB TO A

CANYON 5**30.045.21315****PLUG & ABANDONMENT**

DEPTH OF 5600'. CIRCULATE HOLE CLEAN WITH 42 BBLS OF WATER. PUMP CEMENT PLUG #1 (GRN PERFS TOP 5780' - GRN TOP 5676') 24 SXS CLASS G CEMENT. 4.9 BBLS SLURRY, 1.15 Y, 15.8# & 5 GAL/SX. TOC @ 5400', BOC @ 5600'. DISPLACED WITH 20.8 BBLS OF WATER. LD 6 JTS. TRIP OUT OF THE HOLE WITH 10 STANDS TO 4782'. BLM ENGINEER KEN CHRISTESEN ON LOCATION FOR PLUGGING OPERATIONS. WOC. TIH TO CEMENT PLUG. TAG CEMENT AT A DEPTH OF 5401'. PLANNED CEMENT TOP WAS 5400'. TRIP IN HOLE WITH 152 JOINTS OF 2 3/8" TUBING AND 5 1/2" CEMENT RETAINER. SET AT 4786'. PUMP CEMENT PLUG #2 (GALLUP TOP 4786') 22 SXS CLASS G CEMENT. 4.42 BBLS SLURRY. 1.15 Y, 15.8# & 5 GAL/SX. TOC @ 4650', BOC @ 4836'. PUMPED 6 SX CEMENT BELOW CEMENT RETAINER AND 16 SX ABOVE CEMENT RETAINER AT 4786'. DISPLACED WITH 18 BBLS OF WATER. LD 4 JTS. TRIP OUT OF THE HOLE WITH 10 STANDS TO 4032'. BLM ENGINEER KEN CHRISTESEN ON LOCATION FOR PLUGGING OPERATIONS. BEFORE CEMENT JOB WE ESTABLISHED INJECTION RATE BELOW THE RETAINER AT 750 PSI AT 2.8 BBLS PER MINUTE. WHILE CMMENTING THE PRESSURE WENT TO 950 PSI. AT 2.8 BBLS PER MINUTE. SHUT WELL IN. SECURE LOCATION. SHUT DOWN FOR THE DAY.

7/23/2024 – TOOK PRESSURES ON WELL. CASING 0 PSI. TUBING 0 PSI. BH 45 PSI. BLEW BH DOWN IN 10 SECONDS. TRIP OUT OF THE HOLE WITH 5 1/2" CEMENT RETAINER SETTING TOOL. TRIP BACK IN HOLE WITH 2 3/8" TUBING AND CEMENT TAG SUB TO TAG PLUG. TAG UP WAS SUPPOSED TO BE AT 4650'. WE TAGGED HIGH AT 4491'. LET ENGINEER JOHN LAMOND KNOW TAG RESULTS. HE CALLED BLM AND INFORMED THEM OF THE TAG UP. BLM APPROVED PROCEEDING WITH THE NEXT PLUG. CIRCULATE THE HOLE WITH WATER. 22 BBLS TO GET CIRCULATION. PRESSURE TESTED CASING TO 560 PSI. DROPPED TO 350 PSI IN ONE MINUTE. TRIP OUT OF THE HOLE TO A DEPTH OF 4010'. ESTABLISHED CIRCULATION WITH FRESH WATER TO CEMENT TANK. PUMP CEMENT PLUG #3 (MANCOS TOP 3960') 35 SXS WITH 2% CALCIUM. CLASS G CEMENT. 7.1 BBLS SLURRY, 1.15 Y, 15.8# & 5 GAL/SX. TOC @ 3710', BOC @ 4010'. DISPLACED WITH 14.3 BBLS OF WATER. LD 11 JONTS. REVERSE CIRCULATE AT A DEPTH OF 3660' WITH 21 BBLS OF WATER. PULL 10 STANDS OF TUBING. WOC 4 HOURS. TAG AT 2.5 HOURS. CEMENT SOFT 3673'. REVERSE CIRCULATED TUBING VOLUME TO KEEP TUBING CLEAR AFTER TAG UP. TAG UP WAS 37' FEET HIGHER THAN PLANNED TOP OF PLUG AT 3710'. TAG AFTER 4 HOURS 3673' WAS SOLID. PRESSURE TEST CASING TO 550 PSI. DROPPED TO 400 PSI IN 1 MINUTE. LOST 150 PSI. TRIP OUT OF THE HOLE LAYING DOWN 45 JOINTS AND STAND THE REST BACK IN THE DERRICK FROM A DEPTH 3673'. TRIP IN HOLE WITH 5 1/2" CEMENT RETAINER TO A DEPTH OF 2255' AND SET. STING OUT OF RETAINER. CIRCULATE HOLE CLEAN WITH 5 BBLS OF WATER. PRESSURE TEST CASING 590 PSI. TEST GOOD/BLM APPROVED. PUMP CEMENT PLUG #4 (DV TOOL #1 TOP @2205. MV TOP @2131'). PUMP 26 SXS CLASS G CEMENT. 5.3 BBLS SLURRY, 1.15 Y, 15.8# & 5 GAL/SX. TOC @ 2031', BOC @ 2255'. DISPLACED WITH 7.8 BBLS OF WATER. LAY DOWN 8 JOINTS OF TUBING. TRIP OUT OF THE HOLE WITH TUBING STANDING BACK IN DERRICK. BLM ENGINEER KEN CHRISTESEN ON LOCATION FOR PLUGGING OPERATIONS. SHUT WELL IN. SECURE LOCATION. SHUT DOWN FOR THE DAY.

7/24/2024 – TOOK PRESSURE ON WELL CASING 0 PSI. TUBING N/A. BH 95 PSI. BLEW DOWN IN 1 SECOND. TRIP IN HOLE WITH CEMENT TAG SUB. TAGGED SOLID AT 2060'. PRESSURE TEST CASING TO 550 PSI. PRESSURE WENT FROM 550 PSI TO 525 IN 15 MINUTES. BLM APPROVED THE TEST. PULL UP TO A DEPTH OF 1740'. CIRCULATE HOLE WITH 2 BBLS OF WATER. PUMP CEMENT PLUG #5 (CHACRA TOP @1690'). PUMP 18 SXS CLASS G CEMENT. 2.2 BBLS SLURRY, 1.15 Y, 15.8# & 5 GAL/SX. TOC @ 1590', BOC @ 1740'. DISPLACED WITH 6.1 BBLS OF WATER. TOO H TO 1387'. CIRCULATE HOLE WITH 2 BBLS OF WATER. PUMP CEMENT PLUG #6 (PC TOP @1337'). PUMP 18 SXS CLASS G CEMENT/2% CALC. 2.2 BBLS SLURRY, 1.15 Y, 15.8# & 5 GAL/SX. TOC @ 1237', BOC @ 1387'. DISPLACED WITH 4.7 BBLS OF WATER. PULL UP TO 1225'. REVERSE CIRCULATE HOLE. TRIP OUT OF THE HOLE WITH 10 STANDS OF TUBING. WAIT ON CEMENT TO CURE. LAST PLUG DOWN AT 9:30 AM. FILL BRADENHEAD. TOOK A 1/4 BBL TO LOAD TO SURFACE. TAG AFTER 2.5 HOURS AT 1255'. SHOULD BE 1237'. TAG SOLID AT 4 HOURS AT A

CANYON 5**30.045.21315****PLUG & ABANDONMENT**

DEPTH OF 1245'. TRIP OUT OF THE HOLE WITH THE TUBING FROM A DEPTH OF 1245'. RIG UP THE WIRELINE GROUP. RIH AND RUN CBL FROM 1245' TO SURFACE. SHOWED BOND FROM @ 635'- 740'. SEND BOND LOG TO ENGINEER JOHN LAMOND. RUN IN HOLE AND PERFORATE AT A DEPTH OF 820' TO 821'. 4 SHOTS PER FOOT. PULL OUT OF HOLE WITH PERF GUNS. ATTEMPT TO ESTABLISH CIRCULATION OUT PERF HOLES AT 820' AND OUT BH. COULD NOT ESTABLISH CIRCULATION. PRESSURED UP TO 250 PSI. PRESSURE DROPPED TO 225 PSI IN 15 MINUTES. TRIP IN HOLE TO A DEPTH OF 820'. CIRCULATE HOLE. PRESSURE TEST CASING TO 300 PSI. DROPPED TO 280 PSI IN 20 MINUTES. PUMP PLUG #7. PUMP 14 SXS CLASS G CEMENT. 2.9 BBLS SLURRY, 1.15 Y, 15.8# & 5 GAL/SX. TOC @ 700', BOC @ 820'. DISPLACED WITH 2.7 BBLS OF WATER. TRIP OUT OF THE HOLE WITH TUBING. SET UP BIG RED NITROGEN EQUIPMENT. SET PRESSURE TO 150 PSI ON CASING OVER NIGHT. SHUT WELL IN. SECURE LOCATION. BLM ENGINEER KEN CHRISTESEN ON LOCATION FOR PLUGGING OPERATIONS.

7/25/2024 – TOOK PRESSURES ON WELL. CASING 150 PSI FROM THE NITROGEN WE HAD ON THE CASING ALL NIGHT. TUBING N/A. BH HAD 42 PSI. BLEW DOWN IN LESS THAN A SECOND. TRIP IN HOLE WITH CEMENT TAG SUB. TAG CEMENT AT A DEPTH OF 733'. CALLED ENGINEER WITH PRESSURE DATA AND TAG UP DEPTH. PRESSURE TEST CASING TO 560 PSI. DROPPED 20 PSI IN 10 MINUTES TO 540 PSI. TRIPPED OUT WITH TUBING. RIG UP WIRELINE. RUN IN HOLE WITH PERF GUNS. PERFORATE 669' TO 670'. 4 SHOTS PER FOOT. PULL OUT OF HOLE WITH PERF GUNS. PRESSURE TEST TO 560 PSI FOR 15 MINUTES. LOST 160 PSI WITH THE BH OPEN. PRESSURE TEST TO 560 PSI FOR 15 MINUTES. LOST 115 PSI WITH BH CLOSED. TRIP IN HOLE WITH CEMENT TAG SUB. TAG TOP OF PLUG AT 733'. ESTABLISH CIRCULATION TO RETURN PIT. PUMP CEMENT PLUG #7B PUMP 15 SXS CLASS G CEMENT WITH 2 1/2% CAL. 3.2 BBLS SLURRY, 1.15 Y, 15.8# & 5 GAL/SX. TOC @ 600, BOC @ 733'. DISPLACED WITH 2.3 BBLS OF WATER. PLUG DOWN AT 11:30 AM. TRIP OUT OF THE HOLE WITH TUBING. PUT NITROGEN ON CASING AT A PRESSURE OF 500 PSI FOR 6 HOURS. PUT A GAUGE ON THE BRADENHEAD DURING PLUGGING OPERATIONS. NO PRESSURE. SENT CREW HOME AT 12PM. TOOK PRESSURES ON WELL AT 1:30 PM: CASING 500 WITH NITROGEN. BH AT 25 PSI. TOOK PRESSURES AT 3:15 PM: CASING 500 PSI. BH AT 27 PSI. 4:30 PM: CASING 500 PSI. BH 28 PSI. 5:30PM CASING 500 PSI. BH 30 PSI. SHUT NITROGEN PACKAGE OFF. BLOW DOWN CASING IN 60 SECONDS. LEFT BH AND CASING SHUT IN. BLM ENGINEER KEN CHRISTESEN ON LOCATION FOR PLUGGING OPERATIONS.

7/26/2024 – TOOK PRESSURE ON WELL. BH 29 PSI. CASING 0 PSI. TUBING N/A. BH BLEW DOWN IN LESS THAN A SECOND. TRIP IN HOLE. TAG CEMENT AT 608'. PRESSURE TEST CASING 600 PSI. LOST 50 PSI IN 15 MINUTES. PRESSURED UP BRADENHEAD TO 550 PSI. LOST 400 PSI IN 15 MINUTES. DID THIS MULTIPLE TIMES WITH THE SAME LEAK OFF. TRIP OUT OF THE HOLE WITH TUBING. RIG UP WIRELINE. RUN IN HOLE WITH PERF GUNS. PERFORATE AT A DEPTH OF 565' WITH 4 SHOTS PER FOOT. PULL OUT OF HOLE WITH GUNS. PRESSURE TEST 5 1/2" CASING. 1ST TEST. 600 PSI TO 550 PSI 5 MINUTES. 50 PSI LOSS. 2ND TEST 580 PSI DOWN TO 500 PSI IN 5 MINUTES. 80 PSI LOSS. 3RD TEST 580 PSI DOWN TO 510 PSI IN 5 MINUTES. 70 PSI LOSS. 4TH TEST. 1000 PSI DOWN TO 720 PSI IN 15 MINUTES. 280 PSI LOSS. CALLED ENGINEER WITH RESULTS. RIG UP WIRELINE. RUN IN HOLE WITH PERF GUNS. PERFORATE AT A DEPTH OF 470' WITH 4 SHOTS PER FOOT. PULL OUT OF HOLE WITH GUNS. PRESSURE TEST CASING TO 540 PSI FOR 15 MINUTES. DROPPED TO 330 PSI. A LOSS OF 210 PSI. PRESSURE TEST #2. PRESSURED UP TO 965 PSI. DROPPED TO 635 PSI IN 15 MINUTES. A DROP OF 330 PSI. TESTED BH TO 500 PSI. DROPPED TO 150 PSI IN 15 MINUTES. A LOSS OF 350 PSI. TRIP IN HOLE TO A DEPTH OF 565' WITH CEMENT TAG SUB. ESTABLISH CIRCULATION TO RETURN PIT. PUMP CEMENT PLUG #9. PUMP 23 SXS CLASS G CEMENT WITH 2.0 % CAL. 4.6 BBLS SLURRY, 1.15 Y, 15.8# & 5 GAL/SX. TOC @ 370', BOC @ 565'. DISPLACED WITH 1.43 BBLS OF WATER. PLUG DOWN AT 2:30 PM. TRIP OUT OF THE HOLE WITH TUBING TO A DEPTH OF 350' REVERSE CIRCULATE WITH 6 BBLS OF WATER. TRIP OUT OF THE HOLE WITH TUBING. PUT

CANYON 5**30.045.21315****PLUG & ABANDONMENT**

NITROGEN ON CASING AT A PESSURE OF 500 PSI FOR THE WEEKEND. SHUT WELL IN. SECURE LOCATION. SHUT DOWN. BLM ENGINEER KEN CHRISTESEN ON LOCATION FOR PLUGGING OPERATIONS.

7/29/2024 – TOOK PRESSURES ON WELL. CASING 500 PSI DUE TO NITROGEN WE HAD ON THE WELL ALL WEEKEND. BLEW DOWN INSTANTLY. TUBING N/A. BH 25 PSI. BLEW DOWN INSTANTLY. PRESSURE TEST CASING TO 559 PSI FOR 15 MINUTES. LOST 9 PSI DURING THAT TIME. PRESSURE TEST BRADENHEAD FOR 15 MINUTES TO 550 PSI. DROPPED TO 102 PSI. LOST 448 PSI DURING TEST. RIH AND TAG CEMENT TOP AT 393. TAGGED 23' LOW. CALLED IN RESULTS TO ENGINEER. TRIP OUT OF HOLE WITH TUBING FROM 393'. SHUT BRADENHEAD IN FOR 1 HOUR. BUILT UP TO 1 PSI. CALLED ENGINEER WITH RESULTS. RIG UP WIRELINE. RUN IN HOLE AND PERFORATE AT 329'. 4 SHOT PER FOOT AT 0 DEGREE PHASING. PRESSURE TEST CASING FOR 15 MINUTES TO 600 PSI AFTER PERFORATING AT 329'. PRESSURE DROPPED TO 590 PSI. 10 PSI DROP. PRESSURE TESTED TO 960 PSI. DROPPED TO 940 PSI AFTER 15 MINUTES. 20 PSI DROP. TESTED BRADENHEAD FOR 15 MINUTES. DROPPED TO 140 PSI. A DROP OF 420 PSI. CALLED RESULTS TO ENGINEER. DECISION MADE TO PERF AGAIN AT 329'. RUN IN HOLE WITH WIRELINE. PERF AGAIN AT 329' WITH 4 SHOTS PER FOOT. USED A HEAVIER MAGNET ON PERF GUN. PRESSURE TEST CASING FOR 15 MINUTES TO 600 PSI AFTER PERFORATING AT 329' AGAIN. PRESSURE DROPPED TO 360 PSI. 240 PSI DROP. PRESSURE TESTED TO 940 PSI. DROPPED TO 590 PSI AFTER 15 MINUTES. 350 PSI DROP. TESTED BRADENHEAD FOR 15 MINUTES TO 550. DROPPED TO 100 PSI. A DROP OF 450 PSI. CALLED RESULTS TO ENGINEER. ESTABLISH CIRCULATION TO RETURN PIT. PUMP CEMENT PLUG #10 PUMP 19 SXS CLASS G CEMENT WITH 2% CAL. 4.0 BBLS SLURRY. 1.15 Y, 15.8# & 5 GAL/SX. TOC @ 229, BOC @ 393'. DISPLACED WITH .80 BBLS OF WATER. PLUG DOWN AT 15:05 PM. TRIP OUT OF THE HOLE WITH TUBING TO 215'. REVERSE CIRCUALTE. TRIP OUT OF THE HOLE WITH TUBING. PUT NITROGEN ON CASING AT A PESSURE OF 500 PSI FOR THE NIGHT. SHUT WELL IN. LEFT BH SHUT IN. SECURE LOCATION. SHUT DOWN. BLM ENGINEER KEN CHRISTESEN ON LOCATION FOR PLUGGING OPERATIONS.

7/30/2024 – TOOK PRESSURES ON WELL. BH 29 PSI. BLEW DOWN INSTANTLY. CASING 500 PSI FROM NITROGEN. BLEW DOWN INSTANTLY. TUBING N/A. TRIP IN HOLE WITH CEMENT TAG SUB. TAGGED CEMENT AT A DEPTH OF 221'. CALLED RESULTS INTO ENGINEER. PRESSURE TEST CASING TO 560 PSI FOR 15 MINUTES. LOST 55 PSI. PRESSURE TESTED BH FOR 15 MINUTES TO 550 PSI. LOST 460 PSI. TRIP OUT OF THE HOLE WITH TUBING. SHUT WELL IN FOR ONE HOUR. CHECK PRESSURES FOR BUILD UP. CASING WAS AT 0 PSI. BH AT 22 PSI. BLEW DOWN INSTANTLY. LEL WAS AT ZERO. 2ND TEST AFTER ONE HOUR SHUT IN. CASING 0 PSI. BH 22 PSI. BLEED DOWN INSTANTLY. LEL WAS 0. CALLED ENGINEER WITH RESULTS. DECISION MADE TO PERF AT 200'. RUN IN HOLE WITH WIRELINE. PERF AT 200' WITH 4 SHOTS PER FOOT. ZERO DEGREE PHASING. USED A HEAVIER MAGNET ON PERF GUN. PULL OUT OF THE HOLE WITH PERF GUNS. PRESSURE TEST CASING TO 580 PSI. DROPPED 190 PSI IN 15 MINUTES. PRESSURE TEST BH TO 600. DROPPED 475 PSI IN 15 MINUTES. PRESSURE TEST CASING TO 900 PSI. DROPPED 195 PSI IN 15 MINUTES. SENT CREWS HOME AT 1:30 PM. LEFT BRADENHEAD AND CASING OPEN TO 5:30 PM. SHUT THEM BOTH IN AT THAT TIME. SECURE LOCATION. SHUT DOWN FOR THE DAY.

7/31/2024 – TOOK PRESSURES ON WELL. BH PRESSURE 17 PSI. BLEW DOWN INSTANTLY. CASING 0 PSI. TUBING N/A. LEL WAS 0 ON BH AND CASING. CALLED IN RESULTS TO ENGINEER. PRESSURE TEST BH TO 1000 PSI. DROPPED 890# IN 15 MINUTES. TRIP IN HOLE TO 221'. PRESSURE TEST CASING TO 600 PSI. DROPPED 115 PSI IN 15 MINUTES. TRIP OUT WITH TUBING. RIG UP WIRELINE. RUN IN HOLE AND PERFORATE AT 148' WITH 4 SHOTS PER FOOT. TRIP IN HOLE WITH 5 1/2" PACKER AND SET AT 190' IN 14K TENSION. PRESSURE TEST TO 1000 PSI TRYING TO CIRCULATE OUT UPPER PERFS AT 148'. NO CIRCULATION. PRESSURE DID DROP 250 PSI. TESTED ABOVE PACKER TO 1000 PSI TRYING TO CIRCULATE OUT BH. NO CIRCULATION. PRESSURE DID DROP 600 PSI. REPEATED LAST TEST TO 560 PSI. PRESSURE DROPPED 140 PSI IN 15 MINUTES. RELEASE PACKER. TRIP OUT OF HOLE WITH SAME. WAIT ON ULTRA

CANYON 5**30.045.21315****PLUG & ABANDONMENT**

FINE CEMENT TO BE DELIVERED TO LOCATION FROM HILCORP YARD. ESTABLISH CIRCULATION TO RETURN PIT. PUMP CEMENT PLUG #11 PUMP 20 SXS ULTRA FINE CEMENT WITH. 2.1 BBLS SLURRY, .80 Y, 13.0# & 4.05 GAL/SX. TOC @ 110, BOC @ 200'. DISPLACED WITH .4 BBLS OF WATER. TRIP OUT OF THE HOLE WITH TUBING 100'. REVERSE CIRCULATE UNTIL CLEAN. TRIP OUT OF THE HOLE WITH TUBING. PUT NITROGEN ON CASING AT A PESSURE OF 1000 PSI. SHUT WELL IN. LEFT BH SHUT IN. CLOSED BLIND RAMS AND LOCKED THEM DOWN. CHECKED BH PRESSURE AFTER CEMENT JOB. PRESSURE WAS 0 PSI. RIG DOWN RIG AND CEMENT PUMP TRUCK. P/A OPERATIONS WILL BE SUSPENDED FOR A FEW DAYS TO MAKE EQUIPMENT REPAIRS ON THE RIG AND PUMP TRUCK. SDFWD. BLM ENGINEER KEN CHRISTESEN ON LOCATION FOR PLUGGING OPERATIONS.

8/7/2024 – TRAVEL TO LOCATION. NO RIG OPS TODAY. MONITOR PRESSURES ON WELL: CASING HAD A 1000 PSI ON IT. THAT WAS THE NITROGEN WE HAD ON IT FOR THE CEMENT WORK. NOT GAS PRESSURE FROM THE WELL. SHUT NITROGEN OFF. BLEW WELL DOWN IN 2 SECONDS. CHECKED BH PRESSURE. IT WAS 31 PSI. BLEW DOWN IN A SPLIT SECOND. LEFT BH AND CASING OPEN FOR 9 HOURS WITH NO BLOW FROM EITHER. SHUT BRADENHEAD IN AFTER 9 HOURS. BH BUILT UP TO 12.5 PSI AFTER ONE HOUR. BLEED PRESSURE OFF. SHUT CASING AND BH IN. WELL SHUT IN. SECURE LOCATION. SHUT DOWN FOR THE DAY. TRAVEL TO YARD.

8/8/2024 – TRAVEL TO LOCATION. TOOK PRESSURES ON WELL. BH 19 PSI. LEL WAS 12.6%. BLEW DOWN INSTANTLY AND BUBBLED AT NEEDLE VALVE. CASING WAS 0 PSI. CALLED ENGINEER WITH RESULTS. DECISON MADE TO TAG UP CEMENT. PRESSURE TEST CASING. WAIT ON RIG CREW TO ARRIVE FROM TOWN. PRE JOB SAFETY MEETING ON TODAYS OPERATION. SPOT RIG IN AND RIG UP. PICK UP TUBING. TIH AND TAG TOP OF CEMENT AT 112'. LAY DOWN TAG UP JOINTS. PRESSURE TEST CASING TO 560 PSI FOR 15 MINUTES. PRESSURE DROPPED TO 480 PSI. A DROP OF 80 PSI. PRESSURE TEST BH TO 560 PSI. DROPPED TO 105 PSI. A DROP OF 455 PSI. ND BOP. NU WH. SHUT WELL IN. SECURE LOCATION. RIG DOWN RIG AND SUPPORT EQUIPMENT. RELEASE RIG TO THE OMLER#7. P&A OPERATIONS SUSPENDED. VERBAL APPROVAL FROM BLM, KENNY RENNICK FOR PRODUCING BH TO THE PIT AND MONTHLY REPORTING OF BH & CSG PRESSURES AFTER A 24-HR SHUT-IN.

4/14/2025 – MIRU. CK PSI: TBG-0#, CSG-0#, BH-15# BDW 0 MIN. DIG OUT WH. CHECK LEL (7%). CUT & REMOVE WH USING WH SAW. TOC @ 98' INSIDE 5.5" CSG. TOC @ CUT OFF POINT (8 5/8") SURF. WELD & INSTALL 8 5/8" FLANGE W/ 2" THREADS. PSI TEST FLANGE TO 1200 PSI FOR 10 MINS. TEST OK. RU POLY PIPE. RIH W/PP TO 98'. PLUG 12# FROM 98'-0' (1" X 5.5") M&P 31 SKS OF ULTRA FINE, (CFR 3, FRICTION REDUCER + RETARDANT) 13PPG, .80YIELD, 4.4 BLSRY, 2.9MIX, CIRC CMT TO SURF. RD POLY. INSTALL 2" VALVE. HESITATE 1BSLRY/7SKS UF. WORK PSI FROM 500# TO 1200# PSI. MONITOR PSI. PSI LOCKED UP @ 900# PSI. SIW. APPLY 1000# PSI OF NITROGEN. WOC 48 HRS. RIG CMT EQUIP. DRAIN EQUIP. CLEAN & SECURE LOC. MOL. RD. RIG RELEASED @ 14:00 ON 4/14/2025. (NO BLM REP ON LOCATION, UPDATE VIRGIL LUCERO BY PHONE)

Tammy Jones

From: Rennick, Kenneth G <krennick@blm.gov>
Sent: Tuesday, January 7, 2025 11:57 AM
To: John LaMond; Kade, Matthew H
Cc: Farmington Regulatory Techs; Clay Padgett; Lee Murphy; Joe Zimmerman; Kuehling, Monica, EMNRD; Porch, Dustin T; Lucero, Virgil S
Subject: Re: [EXTERNAL] P&A Revision Request for Hilcorp's CANYON 5 (API # 3004521315)

CAUTION: External sender. DO NOT open links or attachments from UNKNOWN senders.

The BLM finds the proposed procedure appropriate. Please call the BLM at (505) 564.7750, 24 hours before commencing work.

Kenneth (Kenny) Rennick

Petroleum Engineer

Bureau of Land Management
Farmington Field Office
6251 College Blvd
Farmington, NM 87402

Email: krennick@blm.gov
Mobile & Text: 505.497.0019

From: John LaMond <jlamond@hilcorp.com>
Sent: Tuesday, January 7, 2025 11:12 AM
To: Rennick, Kenneth G <krennick@blm.gov>; Kade, Matthew H <mkade@blm.gov>
Cc: Farmington Regulatory Techs <FarmingtonRegulatoryTechs@hilcorp.com>; Clay Padgett <cpadgett@hilcorp.com>; Lee Murphy <lmurphy@hilcorp.com>; Joe Zimmerman <Joseph.Zimmerman@hilcorp.com>; John LaMond <jlamond@hilcorp.com>; Kuehling, Monica, EMNRD <monica.kuehling@emnrd.nm.gov>
Subject: RE: [EXTERNAL] P&A Revision Request for Hilcorp's CANYON 5 (API # 3004521315)

Good morning Kenny,

Per our discussion, Hilcorp has been producing the CANYON 5 bradenhead to the pit since August. It has since dropped down to less than 1 psi after a 24 shut in.

WELL NAME : CANYON 5 (30.045.21315)

DATE:	BH PSI	CSG PSI	COMMENTS:
8/22/2024	13.4	0	after 24hr shut-in
8/27/2024	1.7	0	after 24hr shut-in
9/17/2024	1.7	0	after 24hr shut-in
10/18/2024	0.9	0	after 24hr shut-in
11/22/2024	1	0	after 24hr shut-in
12/10/2024	0.9	0	after 24hr shut-in

Furthermore, we anticipate moving back onto the well within the near future to finish the P&A work.

Moving forward, Hilcorp received verbal approval from the BLM to perform the following:

- Cut off wellhead
- RIH w/ 1" polyline inside the 5-1/2" & tag TOC ~112'. Circulate cement to surface from 0' to 112' (~14sx Class G [115 yld]).
- If able, RIH w/ 1" polyline in the 5-1/2" x 8-5/8" casing annulus. Circulate cement to surface
 - If needed: Weld on 8-5/8" flange, squeeze cement down 5-1/2" x 8-5/8" annulus w/ 50 psi applied pressure.
- WOC
- Weld on P&A marker, top off all strings w/ cement, and fill cellar.

Please let me know if you have any questions or concerns.

Thanks,

John LaMond

Operations Engineer – Technical Services

Hilcorp Energy Company

1111 Travis

Houston, TX 77002

346-237-2210 (Office)

832-754-9692 (Cell)

jlamond@hilcorp.com

From: Rennick, Kenneth G <krennick@blm.gov>

Sent: Thursday, August 8, 2024 11:08 AM

To: John LaMond <jlamond@hilcorp.com>; Kade, Matthew H <mkade@blm.gov>

Cc: Farmington Regulatory Techs <FarmingtonRegulatoryTechs@hilcorp.com>; Clay Padgett <cpadgett@hilcorp.com>; Lee

Murphy <lmurphy@hilcorp.com>; Rustin Mikeska <rmikeska@hilcorp.com>; Darren Randall - (C)

<Darren.Randall@hilcorp.com>; Kuehling, Monica, EMNRD <monica.kuehling@emnrd.nm.gov>

Subject: Re: [EXTERNAL] P&A Revision Request for Hilcorp's CANYON 5 (API # 3004521315)

CAUTION: External sender. DO NOT open links or attachments from UNKNOWN senders.

To confirm the BLM finds the procedure appropriate.

Petroleum Engineer

Bureau of Land Management
Farmington Field Office
6251 College Blvd
Farmington, NM 87402

Email: krennick@blm.gov
Mobile & Text: 505.497.0019

From: John LaMond <jlamond@hilcorp.com>
Sent: Thursday, August 8, 2024 9:43 AM
To: Rennick, Kenneth G <krennick@blm.gov>; Kade, Matthew H <mkade@blm.gov>
Cc: Farmington Regulatory Techs <FarmingtonRegulatoryTechs@hilcorp.com>; Clay Padgett <cpadgett@hilcorp.com>; Lee Murphy <lmurphy@hilcorp.com>; Rustin Mikeska <rmikeska@hilcorp.com>; Darren Randall - (C) <Darren.Randall@hilcorp.com>; Kuehling, Monica, EMNRD <monica.kuehling@emnrd.nm.gov>; John LaMond <jlamond@hilcorp.com>
Subject: RE: [EXTERNAL] P&A Revision Request for Hilcorp's CANYON 5 (API # 3004521315)

Good morning Kenny,

Per our discussion, we pumped our plug on 7/31/2024 per design. This morning BH pressure was still present at 19 psi.

Moving forward, Hilcorp received verbal approval from the BLM to perform the following:

- RDMO workover rig
- Produce Bradenhead to the pit on location
- Monitor well over time
- Will record 24-hour pressure build every 30 days

Please let me know if you have any questions or concerns.

Thanks,

John LaMond
Operations Engineer – Technical Services
Hilcorp Energy Company
1111 Travis
Houston, TX 77002
346-237-2210 (Office)
832-754-9692 (Cell)
jlamond@hilcorp.com

From: Rennick, Kenneth G <krennick@blm.gov>
Sent: Wednesday, July 31, 2024 12:54 PM
To: John LaMond <jlamond@hilcorp.com>; Kade, Matthew H <mkade@blm.gov>
Cc: Farmington Regulatory Techs <FarmingtonRegulatoryTechs@hilcorp.com>; Clay Padgett <cpadgett@hilcorp.com>; Lee Murphy <lmurphy@hilcorp.com>; Rustin Mikeska <rmikeska@hilcorp.com>; Darren Randall - (C)

<Darren.Randall@hilcorp.com>; Kuehling, Monica, EMNRD <monica.kuehling@emnrd.nm.gov>
Subject: Re: [EXTERNAL] P&A Revision Request for Hilcorp's CANYON 5 (API # 3004521315)

CAUTION: External sender. DO NOT open links or attachments from UNKNOWN senders.

The BLM finds the proposed procedure appropriate.

Kenneth (Kenny) Rennick

Petroleum Engineer

Bureau of Land Management
Farmington Field Office
6251 College Blvd
Farmington, NM 87402

Email: krennick@blm.gov
Mobile & Text: 505.497.0019

From: John LaMond <jlamond@hilcorp.com>
Sent: Wednesday, July 31, 2024 11:38 AM
To: Rennick, Kenneth G <krennick@blm.gov>; Kade, Matthew H <mkade@blm.gov>
Cc: Farmington Regulatory Techs <FarmingtonRegulatoryTechs@hilcorp.com>; Clay Padgett <cpadgett@hilcorp.com>; Lee Murphy <lmurphy@hilcorp.com>; Rustin Mikeska <rmikeska@hilcorp.com>; Darren Randall - (C) <Darren.Randall@hilcorp.com>; Kuehling, Monica, EMNRD <monica.kuehling@emnrd.nm.gov>; John LaMond <jlamond@hilcorp.com>
Subject: RE: [EXTERNAL] P&A Revision Request for Hilcorp's CANYON 5 (API # 3004521315)

Good afternoon Kenny,

Per our discussion, we perforated @ 148', set the packer @ 190', and could not establish circulation.

Moving forward, Hilcorp received verbal approval from the BLM to perform the following:

- PLUG #11: 15sx of Fine Grain Cement (13 PPG, 0.8 yield)
 - Lay in a 90' balanced cement plug inside the 5-1/2" casing from 110' to 200'
 - TOOH w/ tubing & apply pressure from surface to squeeze cement through perforations.

Please let me know if you have any questions or concerns.

Thanks,
John LaMond
Operations Engineer – Technical Services
Hilcorp Energy Company
1111 Travis
Houston, TX 77002
346-237-2210 (Office)
832-754-9692 (Cell)
jlamond@hilcorp.com

From: Rennick, Kenneth G <krennick@blm.gov>

Sent: Wednesday, July 31, 2024 9:13 AM

To: John LaMond <jlamond@hilcorp.com>; Kade, Matthew H <mkade@blm.gov>

Cc: Farmington Regulatory Techs <FarmingtonRegulatoryTechs@hilcorp.com>; Clay Padgett <cpadgett@hilcorp.com>; Lee Murphy <lmurphy@hilcorp.com>; Rustin Mikeska <rmikeska@hilcorp.com>; Darren Randall - (C) <Darren.Randall@hilcorp.com>; Kuehling, Monica, EMNRD <monica.kuehling@emnrd.nm.gov>; John LaMond <jlamond@hilcorp.com>

Subject: Re: [EXTERNAL] P&A Revision Request for Hilcorp's CANYON 5 (API # 3004521315)

CAUTION: External sender. DO NOT open links or attachments from UNKNOWN senders.

To confirm, the BLM finds the procedure appropriate.

Get [Outlook for iOS](#)

From: John LaMond <jlamond@hilcorp.com>

Sent: Wednesday, July 31, 2024 8:11:11 AM

To: Rennick, Kenneth G <krennick@blm.gov>; Kade, Matthew H <mkade@blm.gov>

Cc: Farmington Regulatory Techs <FarmingtonRegulatoryTechs@hilcorp.com>; Clay Padgett <cpadgett@hilcorp.com>; Lee Murphy <lmurphy@hilcorp.com>; Rustin Mikeska <rmikeska@hilcorp.com>; Darren Randall - (C) <Darren.Randall@hilcorp.com>; Kuehling, Monica, EMNRD <monica.kuehling@emnrd.nm.gov>; John LaMond <jlamond@hilcorp.com>

Subject: RE: [EXTERNAL] P&A Revision Request for Hilcorp's CANYON 5 (API # 3004521315)

Good morning Kenny,

Per our discussion, we perforated @ 200' and still could not establish circulation. Additionally this morning BH pressure was still present at 17 psi.

Moving forward, Hilcorp received verbal approval from the BLM to perform the following:

- PLUG #11: 14sx of Class G Cement (15.8 PPG, 1.15 yield)
 - Perforate @ 148'
 - RIH w/ 5-1/2" packer & set @ 190'. Establish circulation down tubing, through the perforations @ 200' & 148', and back up inside the 5-1/2" production casing.
 - RIH w/ 5-1/2" CICR & set @ 190'. Re-establish circulation.
 - Pump 14 sacks of Class G cement beneath the 5-1/2" CICR, leaving 10' beneath the CICR inside the 5-1/2" casing from 190' to 200', 52' in the 5-1/2" x 8-5/8" annulus from 148' to 200', & 28' inside the 5-1/2" casing from 120' to 148'.
 - TOOH w/ work string to 120', reverse circulate clean.
 - TOOH w/ work string & apply pressure from surface to squeeze cement through perforations.

Please let me know if you have any questions or concerns.

Thanks,

John LaMond

Operations Engineer – Technical Services

Hilcorp Energy Company

1111 Travis

Houston, TX 77002

346-237-2210 (Office)

832-754-9692 (Cell)

jlamond@hilcorp.com

From: Rennick, Kenneth G <krennick@blm.gov>

Sent: Tuesday, July 30, 2024 10:37 AM

To: John LaMond <jlamond@hilcorp.com>; Kuehling, Monica, EMNRD <monica.kuehling@emnrd.nm.gov>; Kade, Matthew H <mkade@blm.gov>Cc: Farmington Regulatory Techs <FarmingtonRegulatoryTechs@hilcorp.com>; Clay Padgett <cpadgett@hilcorp.com>; Lee Murphy <lmurphy@hilcorp.com>; Rustin Mikeska <rmikeska@hilcorp.com>; Darren Randall - (C) <Darren.Randall@hilcorp.com>

Subject: Re: [EXTERNAL] P&A Revision Request for Hilcorp's CANYON 5 (API # 3004521315)

CAUTION: External sender. DO NOT open links or attachments from UNKNOWN senders.

To confirm, the BLM finds the procedure appropriate.

Kenneth (Kenny) Rennick

Petroleum Engineer

Bureau of Land Management

Farmington Field Office

6251 College Blvd

Farmington, NM 87402

Email: krennick@blm.gov

Mobile & Text: 505.497.0019

From: John LaMond <jlamond@hilcorp.com>

Sent: Tuesday, July 30, 2024 9:28 AM

To: Kuehling, Monica, EMNRD <monica.kuehling@emnrd.nm.gov>; Rennick, Kenneth G <krennick@blm.gov>; Kade, Matthew H <mkade@blm.gov>Cc: Farmington Regulatory Techs <FarmingtonRegulatoryTechs@hilcorp.com>; Clay Padgett <cpadgett@hilcorp.com>; Lee Murphy <lmurphy@hilcorp.com>; Rustin Mikeska <rmikeska@hilcorp.com>; Darren Randall - (C)<Darren.Randall@hilcorp.com>; John LaMond <jlamond@hilcorp.com>

Subject: RE: [EXTERNAL] P&A Revision Request for Hilcorp's CANYON 5 (API # 3004521315)

Good morning Kenny,

Per our discussion, we pumped our plug yesterday per design. This morning BH pressure was still present at 29 psi. We tagged TOC @ 221'.

Moving forward, Hilcorp received verbal approval from the BLM to perform the following:

- Perforate @ 200' & attempt to establish circulation
- Further operational procedure will be communicated and emailed prior to execution.

Please let me know if you have any questions or concerns.

Thanks,

John LaMond

Operations Engineer – Technical Services

Hilcorp Energy Company

1111 Travis

Houston, TX 77002

346-237-2210 (Office)

832-754-9692 (Cell)

jlamond@hilcorp.com

From: Kuehling, Monica, EMNRD <monica.kuehling@emnrd.nm.gov>

Sent: Tuesday, July 30, 2024 9:22 AM

To: Rennick, Kenneth G <krennick@blm.gov>; John LaMond <jlamond@hilcorp.com>; Kade, Matthew H <mkade@blm.gov>

Cc: Farmington Regulatory Techs <FarmingtonRegulatoryTechs@hilcorp.com>; Clay Padgett <cpadgett@hilcorp.com>; Lee

Murphy <lmurphy@hilcorp.com>; Rustin Mikeska <rmikeska@hilcorp.com>; Darren Randall - (C) <Darren.Randall@hilcorp.com>

Subject: RE: [EXTERNAL] P&A Revision Request for Hilcorp's CANYON 5 (API # 3004521315)

CAUTION: External sender. DO NOT open links or attachments from UNKNOWN senders.

NMOCD approves all below for record.

FYI – this well has not had bradenhead problems reported in its past on bradenhead testing. However, there has been problems in that area in the past.

Thank you

Monica Kuehling

Compliance Officer Supervisor

Deputy Oil and Gas Inspector

New Mexico Oil Conservation Division

North District

Office Phone: 505-334-6178 ext. 123

Cell Phone: 505-320-0243

Email - monica.kuehling@emnrd.nm.gov

From: Rennick, Kenneth G <krennick@blm.gov>

Sent: Monday, July 29, 2024 2:49 PM

To: John LaMond <jlamond@hilcorp.com>; Kade, Matthew H <mkade@blm.gov>

Cc: Farmington Regulatory Techs <FarmingtonRegulatoryTechs@hilcorp.com>; Clay Padgett <cpadgett@hilcorp.com>; Lee

Murphy <lmurphy@hilcorp.com>; Rustin Mikeska <rmikeska@hilcorp.com>; Kuehling, Monica, EMNRD

<monica.kuehling@emnrd.nm.gov>; Darren Randall - (C) <Darren.Randall@hilcorp.com>

Subject: Re: [EXTERNAL] P&A Revision Request for Hilcorp's CANYON 5 (API # 3004521315)

To confirm, the BLM finds the procedure appropriate.

Petroleum Engineer

Bureau of Land Management
Farmington Field Office
6251 College Blvd
Farmington, NM 87402

Email: krennick@blm.gov
Mobile & Text: 505.497.0019

From: John LaMond <jlamond@hilcorp.com>
Sent: Monday, July 29, 2024 2:35 PM
To: Rennick, Kenneth G <krennick@blm.gov>; Kade, Matthew H <mkade@blm.gov>
Cc: Farmington Regulatory Techs <FarmingtonRegulatoryTechs@hilcorp.com>; Clay Padgett <cpadgett@hilcorp.com>; Lee Murphy <lmurphy@hilcorp.com>; Rustin Mikeska <rmikeska@hilcorp.com>; Kuehling, Monica, EMNRD <monica.kuehling@emnrd.nm.gov>; Darren Randall - (C) <Darren.Randall@hilcorp.com>; John LaMond <jlamond@hilcorp.com>
Subject: RE: [EXTERNAL] P&A Revision Request for Hilcorp's CANYON 5 (API # 3004521315)

Good afternoon Kenny,

Per our discussion, we perforated @ 329' and still could not establish circulation.

Moving forward, Hilcorp received verbal approval from the BLM to perform the following:

- PLUG #10: 20sx of Class G Cement (15.8 PPG, 1.15 yield); OJO Top @ 279' | KRD Top @ 409'
 - Lay in a 164' balanced cement plug inside the 5-1/2" casing from 229' to 393' with Class G cement (1.15 yld).
 - TOOH w/ tubing & apply pressure from surface to squeeze cement through perforations.

Please let me know if you have any questions or concerns.

Thanks,

John LaMond
Operations Engineer – Technical Services
Hilcorp Energy Company
1111 Travis
Houston, TX 77002
346-237-2210 (Office)
832-754-9692 (Cell)
jlamond@hilcorp.com

From: Rennick, Kenneth G <krennick@blm.gov>
Sent: Monday, July 29, 2024 10:41 AM
To: John LaMond <jlamond@hilcorp.com>; Kade, Matthew H <mkade@blm.gov>
Cc: Farmington Regulatory Techs <FarmingtonRegulatoryTechs@hilcorp.com>; Clay Padgett <cpadgett@hilcorp.com>; Lee Murphy <lmurphy@hilcorp.com>; Rustin Mikeska <rmikeska@hilcorp.com>; Kuehling, Monica, EMNRD <monica.kuehling@emnrd.nm.gov>; Darren Randall - (C) <Darren.Randall@hilcorp.com>
Subject: Re: [EXTERNAL] P&A Revision Request for Hilcorp's CANYON 5 (API # 3004521315)

CAUTION: External sender. DO NOT open links or attachments from UNKNOWN senders.

To confirm the BLM finds the procedure appropriate.

Kenneth (Kenny) Rennick

Petroleum Engineer

Bureau of Land Management
Farmington Field Office
6251 College Blvd
Farmington, NM 87402

Email: krennick@blm.gov
Mobile & Text: 505.497.0019

From: John LaMond <jlamond@hilcorp.com>
Sent: Monday, July 29, 2024 9:39 AM
To: Rennick, Kenneth G <krennick@blm.gov>; Kade, Matthew H <mkade@blm.gov>
Cc: Farmington Regulatory Techs <FarmingtonRegulatoryTechs@hilcorp.com>; Clay Padgett <cpadgett@hilcorp.com>; Lee Murphy <lmurphy@hilcorp.com>; Rustin Mikeska <rmikeska@hilcorp.com>; Kuehling, Monica, EMNRD <monica.kuehling@emnrd.nm.gov>; Darren Randall - (C) <Darren.Randall@hilcorp.com>
Subject: RE: [EXTERNAL] P&A Revision Request for Hilcorp's CANYON 5 (API # 3004521315)

Good morning Kenny,

Per our discussion, we pumped our plug on Friday (7/26/2024) per design. This morning BH pressure was still present at 25 psi. We tagged TOC @ 393'.

Moving forward, Hilcorp received verbal approval from the BLM to perform the following:

- Perforate @ 329' & attempt to establish circulation
- Further operational procedure will be communicated and emailed prior to execution.

Please let me know if you have any questions or concerns.

Thanks,

John LaMond
Operations Engineer – Technical Services
Hilcorp Energy Company
1111 Travis
Houston, TX 77002
346-237-2210 (Office)
832-754-9692 (Cell)
jlamond@hilcorp.com

From: Rennick, Kenneth G <krennick@blm.gov>

Sent: Friday, July 26, 2024 2:02 PM

To: John LaMond <jlamond@hilcorp.com>; Kade, Matthew H <mkade@blm.gov>

Cc: Farmington Regulatory Techs <FarmingtonRegulatoryTechs@hilcorp.com>; Clay Padgett <cpadgett@hilcorp.com>; Lee Murphy <lmurphy@hilcorp.com>; Rustin Mikeska <rmikeska@hilcorp.com>; Kuehling, Monica, EMNRD <monica.kuehling@emnrd.nm.gov>; Darren Randall - (C) <Darren.Randall@hilcorp.com>; John LaMond <jlamond@hilcorp.com>

Subject: Re: [EXTERNAL] P&A Revision Request for Hilcorp's CANYON 5 (API # 3004521315)

CAUTION: External sender. DO NOT open links or attachments from UNKNOWN senders.

To confirm the BLM finds the procedure appropriate.

Get [Outlook for iOS](#)

From: John LaMond <jlamond@hilcorp.com>

Sent: Friday, July 26, 2024 11:42:13 AM

To: Kade, Matthew H <mkade@blm.gov>; Rennick, Kenneth G <krennick@blm.gov>

Cc: Farmington Regulatory Techs <FarmingtonRegulatoryTechs@hilcorp.com>; Clay Padgett <cpadgett@hilcorp.com>; Lee Murphy <lmurphy@hilcorp.com>; Rustin Mikeska <rmikeska@hilcorp.com>; Kuehling, Monica, EMNRD <monica.kuehling@emnrd.nm.gov>; Darren Randall - (C) <Darren.Randall@hilcorp.com>; John LaMond <jlamond@hilcorp.com>

Subject: RE: [EXTERNAL] P&A Revision Request for Hilcorp's CANYON 5 (API # 3004521315)

Good afternoon Kenny,

Per our discussion, we perforated @ 565' and still could not establish circulation.

Moving forward, Hilcorp received verbal approval from the BLM to perform the following:

- PLUG #9: 23sx of Class G Cement (15.8 PPG, 1.15 yield); KRD Top @ 409'
 - Perforate @ 470'
 - Lay in a 195' balanced cement plug inside the 5-1/2" casing from 370' to 565' with Class G cement (1.15 yld).
 - TOO H w/ tubing & apply pressure from surface to squeeze cement through perforations.

Please let me know if you have any questions or concerns.

Thanks,

John LaMond

Operations Engineer – Technical Services

Hilcorp Energy Company

1111 Travis

Houston, TX 77002

346-237-2210 (Office)

832-754-9692 (Cell)

jlamond@hilcorp.com

From: Kade, Matthew H <mkade@blm.gov>

Sent: Friday, July 26, 2024 10:49 AM

To: John LaMond <jlamond@hilcorp.com>; Rennick, Kenneth G <krennick@blm.gov>

Cc: Farmington Regulatory Techs <FarmingtonRegulatoryTechs@hilcorp.com>; Clay Padgett <cpadgett@hilcorp.com>; Lee Murphy <lmurphy@hilcorp.com>; Rustin Mikeska <rmikeska@hilcorp.com>; Kuehling, Monica, EMNRD

<monica.kuehling@emnrd.nm.gov>; Darren Randall - (C) <Darren.Randall@hilcorp.com>
Subject: Re: [EXTERNAL] P&A Revision Request for Hilcorp's CANYON 5 (API # 3004521315)

CAUTION: External sender. DO NOT open links or attachments from UNKNOWN senders.

To confirm, the BLM finds the proposed procedure appropriate.

Thanks,
Matthew Kade
Petroleum Engineer
BLM - Farmington Field Office
6251 College Blvd
Farmington, NM 87402
Office: (505) 564-7736

From: John LaMond <jlamond@hilcorp.com>
Sent: Friday, July 26, 2024 9:36 AM
To: Rennick, Kenneth G <krennick@blm.gov>; Kade, Matthew H <mkade@blm.gov>
Cc: Farmington Regulatory Techs <FarmingtonRegulatoryTechs@hilcorp.com>; Clay Padgett <cpadgett@hilcorp.com>; Lee Murphy <lmurphy@hilcorp.com>; Rustin Mikeska <rmikeska@hilcorp.com>; Kuehling, Monica, EMNRD <monica.kuehling@emnrd.nm.gov>; Darren Randall - (C) <Darren.Randall@hilcorp.com>; John LaMond <jlamond@hilcorp.com>
Subject: RE: [EXTERNAL] P&A Revision Request for Hilcorp's CANYON 5 (API # 3004521315)

Good morning Kenny and Matthew,

Per our discussion, we pumped our plug yesterday per design. This morning BH pressure was still present at 29 psi. We tagged TOC @ 608'.

Moving forward, Hilcorp received verbal approval from the BLM to perform the following:

- Perforate @ 565' & establish circulation
- Further operational procedure will be communicated and emailed prior to execution.

Please let me know if you have any questions or concerns.

Thanks,

John LaMond
Operations Engineer – Technical Services
Hilcorp Energy Company
1111 Travis
Houston, TX 77002
346-237-2210 (Office)
832-754-9692 (Cell)
jlamond@hilcorp.com

From: Rennick, Kenneth G <krennick@blm.gov>
Sent: Thursday, July 25, 2024 9:26 AM
To: John LaMond <jlamond@hilcorp.com>; Kade, Matthew H <mkade@blm.gov>
Cc: Farmington Regulatory Techs <FarmingtonRegulatoryTechs@hilcorp.com>; Clay Padgett <cpadgett@hilcorp.com>; Lee Murphy <lmurphy@hilcorp.com>; Rustin Mikeska <rmikeska@hilcorp.com>; Kuehling, Monica, EMNRD

<monica.kuehling@emnrd.nm.gov>; Darren Randall - (C) <Darren.Randall@hilcorp.com>
Subject: Re: [EXTERNAL] P&A Revision Request for Hilcorp's CANYON 5 (API # 3004521315)

CAUTION: External sender. DO NOT open links or attachments from UNKNOWN senders.

To confirm, the BLM finds the proposed procedure appropriate.

Kenneth (Kenny) Rennick

Petroleum Engineer

Bureau of Land Management
Farmington Field Office
6251 College Blvd
Farmington, NM 87402

Email: krennick@blm.gov
Mobile & Text: 505.497.0019

From: John LaMond <jlamond@hilcorp.com>
Sent: Thursday, July 25, 2024 8:16 AM
To: Rennick, Kenneth G <krennick@blm.gov>; Kade, Matthew H <mkade@blm.gov>
Cc: Farmington Regulatory Techs <FarmingtonRegulatoryTechs@hilcorp.com>; Clay Padgett <cpadgett@hilcorp.com>; Lee Murphy <lmurphy@hilcorp.com>; Rustin Mikeska <rmikeska@hilcorp.com>; Kuehling, Monica, EMNRD <monica.kuehling@emnrd.nm.gov>; Darren Randall - (C) <Darren.Randall@hilcorp.com>; John LaMond <jlamond@hilcorp.com>
Subject: RE: [EXTERNAL] P&A Revision Request for Hilcorp's CANYON 5 (API # 3004521315)

Good morning Kenny,

Per our discussion, we pumped our plug yesterday per design. This morning BH pressure was still present at 42 psi. We tagged TOC @ 733'.

Moving forward, Hilcorp received verbal approval to perform the following:

PLUG #8: 16sx of Class G Cement (15.8 PPG, 1.15 yield); FRD Top @ 770'

- Perforate @ 669' & 670'
- Lay in a 133' balanced cement plug inside the 5-1/2" casing from 600' to 733' with Class G cement (1.15 yld).
- TOOH w/ tubing & apply pressure from surface to squeeze cement through perforations.

Please let me know if you have any questions or concerns.

Thanks,

John LaMond
Operations Engineer – Technical Services
Hilcorp Energy Company
1111 Travis
Houston, TX 77002

346-237-2210 (Office)

832-754-9692 (Cell)

jlamond@hilcorp.com

From: Rennick, Kenneth G <krennick@blm.gov>

Sent: Wednesday, July 24, 2024 5:58 PM

To: John LaMond <jlamond@hilcorp.com>; Kade, Matthew H <mkade@blm.gov>Cc: Farmington Regulatory Techs <FarmingtonRegulatoryTechs@hilcorp.com>; Clay Padgett <cpadgett@hilcorp.com>; Lee Murphy <lmurphy@hilcorp.com>; Rustin Mikeska <rmikeska@hilcorp.com>; Kuehling, Monica, EMNRD<monica.kuehling@emnrd.nm.gov>; Darren Randall - (C) <Darren.Randall@hilcorp.com>; John LaMond <jlamond@hilcorp.com>

Subject: Re: [EXTERNAL] P&A Revision Request for Hilcorp's CANYON 5 (API # 3004521315)

CAUTION: External sender. DO NOT open links or attachments from UNKNOWN senders.

To confirm the BLM finds the procedure appropriate.

Get [Outlook for iOS](#)

From: John LaMond <jlamond@hilcorp.com>

Sent: Wednesday, July 24, 2024 4:55:28 PM

To: Rennick, Kenneth G <krennick@blm.gov>; Kade, Matthew H <mkade@blm.gov>Cc: Farmington Regulatory Techs <FarmingtonRegulatoryTechs@hilcorp.com>; Clay Padgett <cpadgett@hilcorp.com>; Lee Murphy <lmurphy@hilcorp.com>; Rustin Mikeska <rmikeska@hilcorp.com>; Kuehling, Monica, EMNRD<monica.kuehling@emnrd.nm.gov>; Darren Randall - (C) <Darren.Randall@hilcorp.com>; John LaMond <jlamond@hilcorp.com>

Subject: RE: [EXTERNAL] P&A Revision Request for Hilcorp's CANYON 5 (API # 3004521315)

Good afternoon Kenny,

Attached is the CBL run this afternoon (2024-07-24).

Additionally, BH pressure this morning was found to be 95 psi.

Per our discussion, BLM has provided verbal approval for the following:

PLUG #7: 14sx of Class G Cement (15.8 PPG, 1.15 yield); FRD Top @ 770'

- Perforate @ 820' (per approved NOI)
- Lay in a 120' balanced cement plug inside the 5-1/2" casing from 700' to 820' with Class G cement (1.15 yld).
- TOOH w/ tubing & apply pressure from surface to squeeze cement through perforations.

Please let me know if you have any questions or concerns.

Thanks,

John LaMond

Operations Engineer – Technical Services

Hilcorp Energy Company

1111 Travis

Houston, TX 77002

346-237-2210 (Office)

832-754-9692 (Cell)

jlamond@hilcorp.com

From: Rennick, Kenneth G <krennick@blm.gov>
Sent: Monday, July 22, 2024 9:33 AM
To: John LaMond <jlamond@hilcorp.com>; Kade, Matthew H <mkade@blm.gov>
Cc: Farmington Regulatory Techs <FarmingtonRegulatoryTechs@hilcorp.com>; Clay Padgett <cpadgett@hilcorp.com>; Lee Murphy <lmurphy@hilcorp.com>; Rustin Mikeska <rmikeska@hilcorp.com>; Kuehling, Monica, EMNRD <monica.kuehling@emnrn.nm.gov>; Darren Randall - (C) <Darren.Randall@hilcorp.com>
Subject: Re: [EXTERNAL] P&A Revision Request for Hilcorp's CANYON 5 (API # 3004521315)

CAUTION: External sender. DO NOT open links or attachments from UNKNOWN senders.

To confirm, the BLM finds the procedure appropriate.

Kenneth (Kenny) Rennick

Petroleum Engineer

Bureau of Land Management
Farmington Field Office
6251 College Blvd
Farmington, NM 87402

Email: krennick@blm.gov
Mobile & Text: 505.497.0019

From: John LaMond <jlamond@hilcorp.com>
Sent: Monday, July 22, 2024 8:11 AM
To: Rennick, Kenneth G <krennick@blm.gov>; Kade, Matthew H <mkade@blm.gov>
Cc: Farmington Regulatory Techs <FarmingtonRegulatoryTechs@hilcorp.com>; Clay Padgett <cpadgett@hilcorp.com>; Lee Murphy <lmurphy@hilcorp.com>; Rustin Mikeska <rmikeska@hilcorp.com>; Kuehling, Monica, EMNRD <monica.kuehling@emnrn.nm.gov>; Darren Randall - (C) <Darren.Randall@hilcorp.com>; John LaMond <jlamond@hilcorp.com>
Subject: RE: [EXTERNAL] P&A Revision Request for Hilcorp's CANYON 5 (API # 3004521315)

Good morning Kenny,

Per our discussion, we had wireline set up for 9:30 AM to jet cut, and until then our plan was to continue on working the pipe free. As it turns out we were successful and are coming out of the hole now with our full string.

Moving forward, Hilcorp received verbal approval from the BLM to proceed with pumping PLUG #1 from 5,450' to 5,600' in an effort to avoid the trouble area deeper and avoid getting stuck again.

Please let me know if you have any questions.

Thanks,

John LaMond
Operations Engineer – Technical Services

Hilcorp Energy Company
1111 Travis
Houston, TX 77002
346-237-2210 (Office)
832-754-9692 (Cell)
jlamond@hilcorp.com

From: John LaMond <jlamond@hilcorp.com>
Sent: Monday, July 22, 2024 8:51 AM
To: Rennick, Kenneth G <krennick@blm.gov>; Kade, Matthew H <mkade@blm.gov>
Cc: Farmington Regulatory Techs <FarmingtonRegulatoryTechs@hilcorp.com>; Clay Padgett <cpadgett@hilcorp.com>; Lee Murphy <lmurphy@hilcorp.com>; Rustin Mikeska <rmikeska@hilcorp.com>; Kuehling, Monica, EMNRD <monica.kuehling@emnrd.nm.gov>; Darren Randall - (C) <Darren.Randall@hilcorp.com>; John LaMond <jlamond@hilcorp.com>
Subject: RE: [EXTERNAL] P&A Revision Request for Hilcorp's CANYON 5 (API # 3004521315)

Good morning Kenny,

Per our conversation this weekend, after successfully recovering parted tubing in the Canyon 5, Hilcorp TIH to tag fill @ 5,655' (55' of fill on top of CIBP @ 5,710'). After cleaning out to 5,710', the tubing became stuck and EOT is currently sitting at ~5,649' after making multiple attempts to free the pipe.

Moving forward, Hilcorp received verbal approval from the BLM to jet cut the 2-3/8" tubing @ 5,600', leaving the fish below that depth. Hilcorp also received verbal approval to move forward with pumping a 150' cement plug on top of the fish from 5,450' to 5,600' MD. This will be PLUG #1.

Please let me know if you have any questions.

Thanks,

John LaMond
Operations Engineer – Technical Services
Hilcorp Energy Company
1111 Travis
Houston, TX 77002
346-237-2210 (Office)
832-754-9692 (Cell)
jlamond@hilcorp.com

From: Rennick, Kenneth G <krennick@blm.gov>
Sent: Tuesday, May 28, 2024 5:03 PM
To: John LaMond <jlamond@hilcorp.com>; Kuehling, Monica, EMNRD <monica.kuehling@emnrd.nm.gov>; Kade, Matthew H <mkade@blm.gov>
Cc: Farmington Regulatory Techs <FarmingtonRegulatoryTechs@hilcorp.com>; Brice Clyde - (C) <Brice.Clyde@hilcorp.com>; Clay Padgett <cpadgett@hilcorp.com>; Lee Murphy <lmurphy@hilcorp.com>; Rustin Mikeska <rmikeska@hilcorp.com>
Subject: Re: [EXTERNAL] P&A Revision Request for Hilcorp's CANYON 5 (API # 3004521315)

CAUTION: External sender. DO NOT open links or attachments from UNKNOWN senders.

To confirm, the BLM finds the proposed changes appropriate.

Kenneth (Kenny) Rennick

Petroleum Engineer

Bureau of Land Management
Farmington Field Office
6251 College Blvd
Farmington, NM 87402

Email: krennick@blm.gov
Mobile & Text: 505.497.0019

From: John LaMond <jlamond@hilcorp.com>
Sent: Tuesday, May 28, 2024 3:37 PM
To: Kuehling, Monica, EMNRD <monica.kuehling@emnrd.nm.gov>; Rennick, Kenneth G <krennick@blm.gov>; Kade, Matthew H <mkade@blm.gov>
Cc: Farmington Regulatory Techs <FarmingtonRegulatoryTechs@hilcorp.com>; Brice Clyde - (C) <Brice.Clyde@hilcorp.com>; Clay Padgett <cpadgett@hilcorp.com>; Lee Murphy <lmurphy@hilcorp.com>; Rustin Mikeska <rmikeska@hilcorp.com>; John LaMond <jlamond@hilcorp.com>
Subject: [EXTERNAL] P&A Revision Request for Hilcorp's CANYON 5 (API # 3004521315)

This email has been received from outside of DOI - Use caution before clicking on links, opening attachments, or responding.

Good afternoon Kenny and Monica,

Hilcorp is planning to work on the CANYON 5 (API # 3004521315) P&A in the near future.

I have attached the approved P&A NOI, as well as an updated procedure based on the COAs in the approved NOI.

Based on the COAs, Hilcorp requests the following adjustments to the approved procedure:

- PLUG #1: Hilcorp received verbal approval from the NMOCD to proceed with the originally proposed plug design after discussing the COAs with respect to the top perforation being @ 5,780'.
 - Hilcorp received verbal approval to proceed with pumping a 150' plug on top of the CBP @ 5,710' and forego drilling out the CBP to cover the Dakota top @ 5,836'.
- PLUG #4: 27sx of Class G Cement (15.8 PPG, 1.15 yield); DV Tool #1 Top @ 2,205' | MV Top @ 2,131':
 - Hilcorp received verbal approval from the BLM to eliminate the original MV plug (based on the old MV top @ 2,788'). It has been replaced with this plug based on the BLM MV top @ 2,131'. This eliminates the need for an outside plug based on the CBL (2010-06-08).
 - Hilcorp will now set a CICR or CIBP @ 2,255' (50' below the DV tool). This is subject to change pending pressure test results on prior plugs.
 - Pump a 27 sack balanced cement plug inside the 5-1/2" casing (est. TOC @ +/- 2,031' & est. BOC @ +/- 2,255').
*Note cement plug lengths and volumes account for excess.
- All other plugs have been adjusted according to the BLM & NMOCD formation tops. Plugs may be combined pending pressure test results.
- Please see the revised procedure attached and below. The updated wellbore schematic is also attached.

Do the NMOCD and BLM approve of the revised procedure?

Thanks,

John LaMond

Operations Engineer – Technical Services

Hilcorp Energy Company

1111 Travis

Houston, TX 77002

346-237-2210 (Office)

832-754-9692 (Cell)

jlamond@hilcorp.com

The information contained in this email message is confidential and may be legally privileged and is intended only for the use of the individual or entity named above. If you are not an intended recipient or if you have received this message in error, you are hereby notified that any dissemination, distribution, or copy of this email is strictly prohibited. If you have received this email in error, please immediately notify us by return email or telephone if the sender's phone number is listed above, then promptly and permanently delete this message.

While all reasonable care has been taken to avoid the transmission of viruses, it is the responsibility of the recipient to ensure that the onward transmission, opening, or use of this message and any attachments will not adversely affect its systems or data. No responsibility is accepted by the company in this regard and the recipient should carry out such virus and other checks as it considers appropriate.

The information contained in this email message is confidential and may be legally privileged and is intended only for the use of the individual or entity named above. If you are not an intended recipient or if you have received this message in error, you are hereby notified that any dissemination, distribution, or copy of this email is strictly prohibited. If you have received this email in error, please immediately notify us by return email or telephone if the sender's phone number is listed above, then promptly and permanently delete this message.

While all reasonable care has been taken to avoid the transmission of viruses, it is the responsibility of the recipient to ensure that the onward transmission, opening, or use of this message and any attachments will not adversely affect its systems or data. No responsibility is accepted by the company in this regard and the recipient should carry out such virus and other checks as it considers appropriate.

The information contained in this email message is confidential and may be legally privileged and is intended only for the use of the individual or entity named above. If you are not an intended recipient or if you have received this message in error, you are hereby notified that any dissemination, distribution, or copy of this email is strictly prohibited. If you have received this email in error, please immediately notify us by return email or telephone if the sender's phone number is listed above, then promptly and permanently delete this message.

While all reasonable care has been taken to avoid the transmission of viruses, it is the responsibility of the recipient to ensure that the onward transmission, opening, or use of this message and any attachments will not adversely affect its systems or data. No responsibility is accepted by the company in this regard and the recipient should carry out such virus and other checks as it considers appropriate.

The information contained in this email message is confidential and may be legally privileged and is intended only for the use of the individual or entity named above. If you are not an intended recipient or if you have received this message in error, you are hereby notified that any dissemination, distribution, or copy of this email is strictly prohibited. If you have received this email in error, please immediately notify us by return email or telephone if the sender's phone number is listed above, then promptly and permanently delete this message.

While all reasonable care has been taken to avoid the transmission of viruses, it is the responsibility of the recipient to ensure that the onward transmission, opening, or use of this message and any attachments will not adversely affect its systems or data. No responsibility is accepted by the company in this regard and the recipient should carry out such virus and other checks as it considers appropriate.

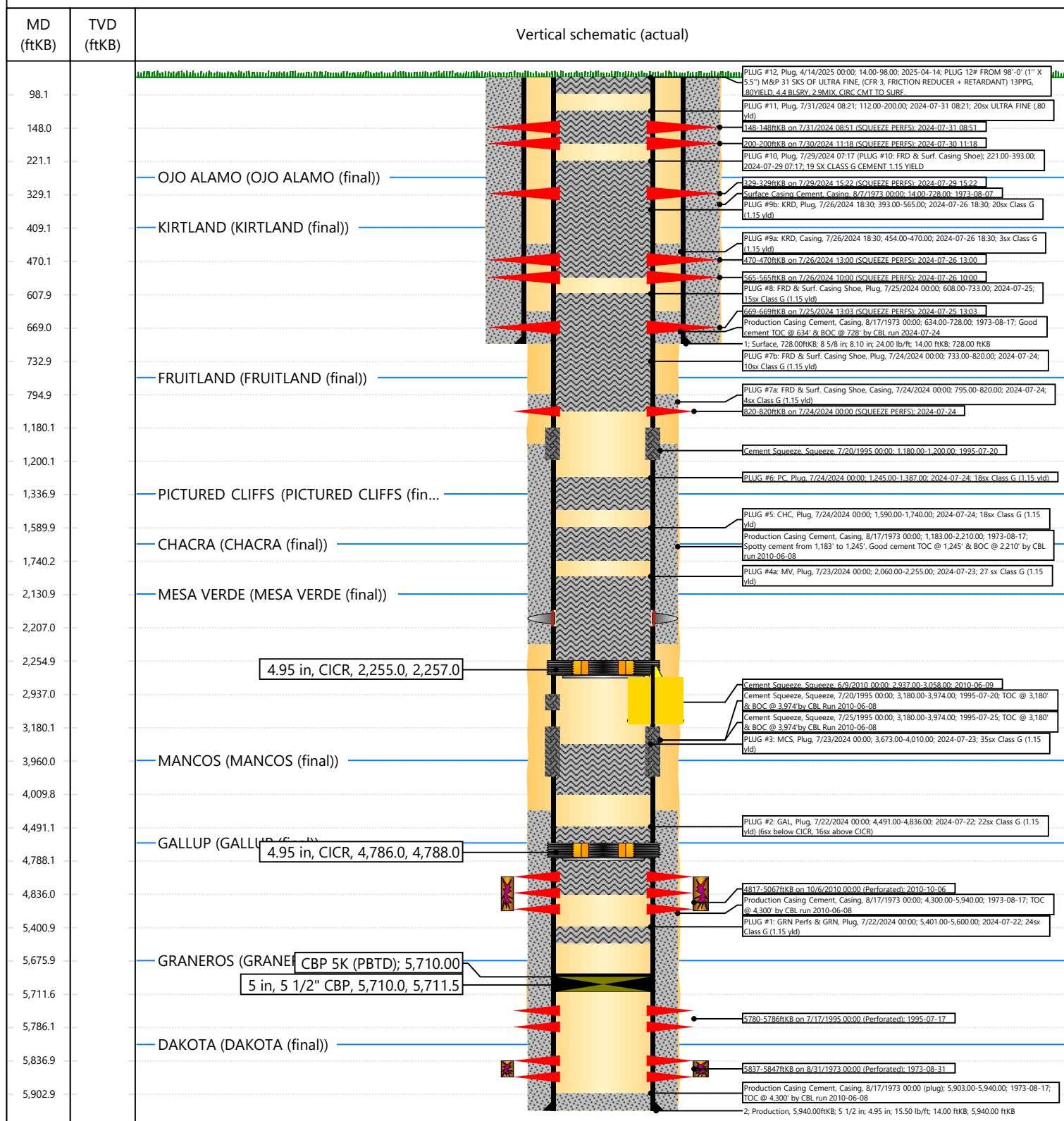


Current Schematic - Version 3

Well Name: CANYON #5

API / UWI 3004521315	Surface Legal Location T25N-R11W-S03	Field Name Basin Dakota	Route 0609	State/Province New Mexico	Well Configuration Type Vertical
Ground Elevation (ft) 6,280.00	Original KB/RT Elevation (ft) 6,294.00	Tubing Hanger Elevation (ft)	RKB to GL (ft) 14.00	KB-Casing Flange Distance (ft)	KB-Tubing Hanger Distance (ft)
Tubing Strings					
Run Date 10/22/2019 16:00	Set Depth (ftKB) 5,171.83	String Max Nominal OD (in) 2 3/8	String Min Nominal ID (in) 2.00	Weight/Length (lb/ft) 4.60	Original Spud Date 8/6/1973 00:00

Original Hole [Vertical]



Sante Fe Main Office
Phone: (505) 476-3441

General Information
Phone: (505) 629-6116

Online Phone Directory
<https://www.emnrd.nm.gov/oed/contact-us>

State of New Mexico
Energy, Minerals and Natural Resources
Oil Conservation Division
1220 S. St Francis Dr.
Santa Fe, NM 87505

CONDITIONS

Action 456479

CONDITIONS

Operator: HILCORP ENERGY COMPANY 1111 Travis Street Houston, TX 77002	OGRID: 372171
	Action Number: 456479
	Action Type: [C-103] Sub. Plugging (C-103P)

CONDITIONS

Created By	Condition	Condition Date
mkuehling	tribal well - approved for record only - well plugged 4/14/2025	5/1/2025