

<b>Well Name:</b> GALLEGOS CANYON UNIT	<b>Well Location:</b> T28N / R13W / SEC 24 / SESE / 36.6429 / -108.16478	<b>County or Parish/State:</b> SAN JUAN / NM
<b>Well Number:</b> 239E	<b>Type of Well:</b> CONVENTIONAL GAS WELL	<b>Allottee or Tribe Name:</b>
<b>Lease Number:</b> NMSF077966	<b>Unit or CA Name:</b> GCU DK 892000844F	<b>Unit or CA Number:</b> NMNM78391C
<b>US Well Number:</b> 3004525137	<b>Operator:</b> SIMCOE LLC	

Subsequent Report

**Sundry ID:** 2802712

**Type of Submission:** Subsequent Report

**Date Sundry Submitted:** 07/23/2024

**Date Operation Actually Began:** 07/01/2024

**Type of Action:** Plug and Abandonment

**Time Sundry Submitted:** 03:39

**Actual Procedure:** null

SR Attachments

**Actual Procedure**

[IKAV\\_GCU\\_239E\\_CBL\\_20240723153852.pdf](#)

[GCU\\_239E\\_\\_P\\_A\\_WBD\\_\\_\\_SR\\_20240723153842.pdf](#)

[GCU\\_239E\\_\\_P\\_A\\_SR\\_20240723153834.pdf](#)

Received by OCD: 4/10/2025 3:08:51 PM

Page 2 of 10

Well Name: GALLEGOS CANYON UNIT	Well Location: T28N / R13W / SEC 24 / SESE / 36.6429 / -108.16478	County or Parish/State: SAN JUAN / NM
Well Number: 239E	Type of Well: CONVENTIONAL GAS WELL	Allottee or Tribe Name:
Lease Number: NMSF077966	Unit or CA Name: GCU DK 892000844F	Unit or CA Number: NMNM78391C
US Well Number: 3004525137	Operator: SIMCOE LLC	

Operator

I certify that the foregoing is true and correct. Title 18 U.S.C. Section 1001 and Title 43 U.S.C. Section 1212, make it a crime for any person knowingly and willfully to make to any department or agency of the United States any false, fictitious or fraudulent statements or representations as to any matter within its jurisdiction. Electronic submission of Sundry Notices through this system satisfies regulations requiring a

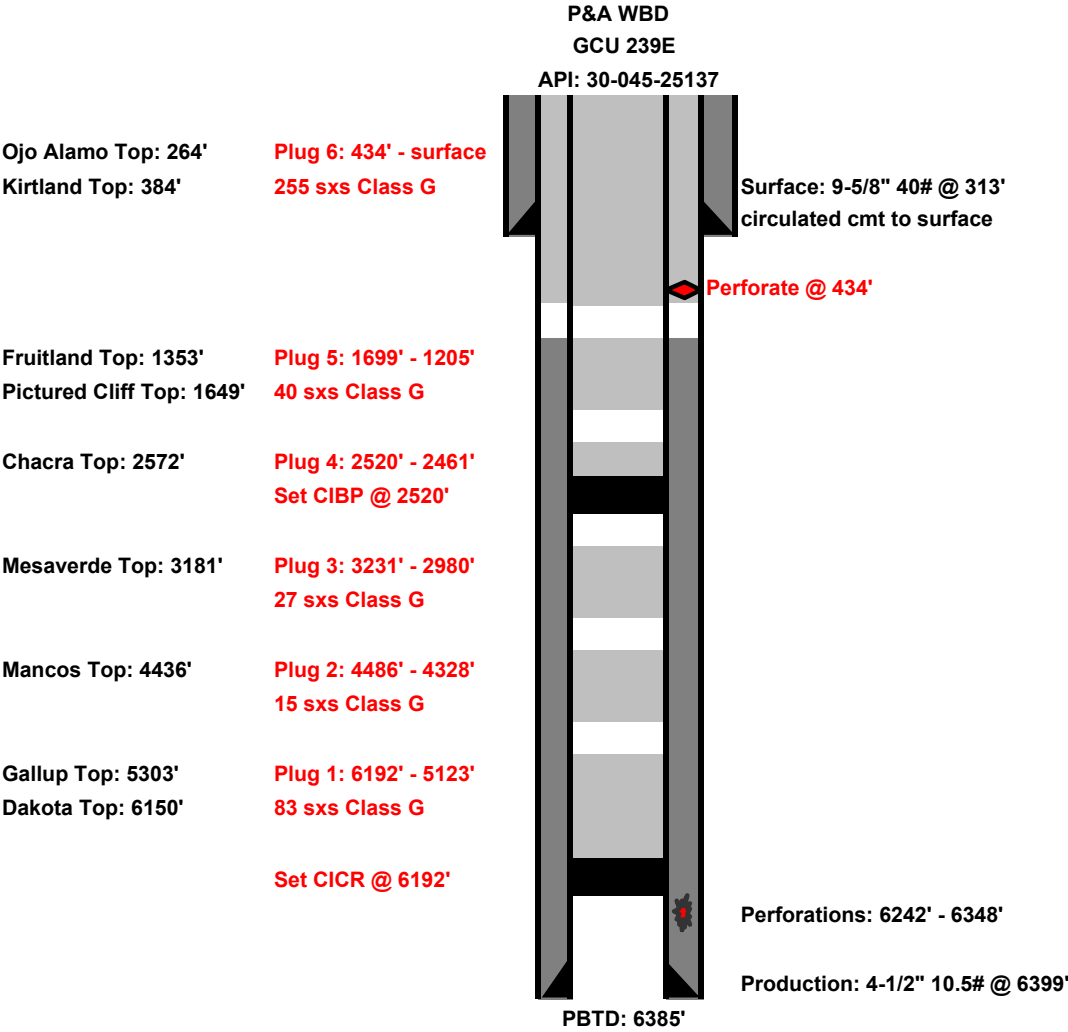
Operator Electronic Signature: CHRISTY KOST	Signed on: JUL 23, 2024 03:39 PM
Name: SIMCOE LLC	
Title: Permitting Agent	
Street Address: 1199 MAIN AVE STE 101	
City: DURANGO	State: CO
Phone: (719) 251-7733	
Email address: CHRISTY.KOST@IKAVENERGY.COM	

Field

Representative Name:		
Street Address:		
City:	State:	Zip:
Phone:		
Email address:		

BLM Point of Contact

BLM POC Name: MATTHEW H KADE	BLM POC Title: Petroleum Engineer
BLM POC Phone: 5055647736	BLM POC Email Address: MKADE@BLM.GOV
Disposition: Accepted	Disposition Date: 07/24/2024
Signature: Matthew Kade	



**SIMCOE**  
**Plug & Abandon SR**

<b>Well:</b>	GCU #239E	<b>API:</b>	30-045-25137
<b>Location:</b>	970' FSL & 1115' FEL	<b>Field:</b>	DK
<b>Sec,T, R:</b>	Sec 24 28N-13W	<b>Elevation:</b>	GL: 5943'
<b>Cnty/State:</b>	San Juan, New Mexico		
<b>Lat/Long:</b>	36.6431427, -108.1564282		

---

7/1/24 – MIRU service rig. NDWH, NUBOP. POOH production tubing. RIH 4.5" scraper.

7/2/24 – RIH and POOH 4.5" scraper. RIH mill, worked through tight spot at 2535'.

7/3/24 – POOH mill. RIH bit and scraper to 6210'. POOH bit. RIH 4.5" CR, set at 6192'. Loaded hole and circulated w/ 37 bbls. Attempted to pressure test casing, had injection rate of 1.5 bpm at 400 psi. POOH tubing.

7/8/24 – Ran CBL from 6192' to surface. RIH tubing, spotted 83 sx Class G, 1.15 yield, #15.8 cement from 6192'-5123', covering the Dakota and Gallup tops. WOC 4 hrs. Tagged cement at 5064'. LD tubing, pressure tested casing, had injection rate of 1.5 BPM at 200 psi.

7/9/24 – Spotted 15 sx Class G, 1.15 yield, #15.8 cement from 4486-4291', covering Mancos top. WOC 4 hrs. Tagged cement at 4328'. LD tubing, pressure tested casing, had injection rate of 1.5 BPM at 350 psi. Spotted 15 sx Class G, 1.15 yield, #15.8 cement from 3231'-3036', covering Mesaverde top. LD tubing, reverse cleaned.

7/10/24 – Tagged cement at 3134'. Spotted additional 12 sx Class G, 1.15 yield, #15.8 cement on top of existing Mesaverde plug. WOC 4 hrs. Tagged cement at 2980'. LD tubing, pressure tested casing, had injection rate of 1.5 BPM at 380 psi. Spotted 20 sx Class G, 1.15 yield, #15.8 cement from 2622'-2364', covering Chacra top.

7/11/24 – Tagged cement at 1838'. POOH and RIH bit. Drilled cement from 1838-1990' and 2579-2622'. RIH tubing to 2633', spotted 20 sx Class G, 1.15 yield, #15.8 cement, covering Chacra top. Applied 300 psi over the weekend.

7/15/24 – Tagged cement at 2035'. POOH and RIH bt, drilled cement from 2035-2208', 2579-2589'. Received approval from BLM to not drill out 33' of hard cement.

7/16/24 – POOH bit. RIH 4.5" packer, set at 2472'. Pressured up tubing and casing below to 800 psi, was able to pump into casing at 1.5 BPM at 430 psi. Set packer at 2411'. Same results on casing, tubing pressure dropped slowly. Set packer at 1729', same results. POOH packer, got stuck at 1640'. Was able to free packer and chase to bottom at 2533'.

7/17/24 – Set 10k CIBP at 2520'. Spotted 8 sx Class G, 1.15 yield, #15.8 cement from 2520-2420', covering Chacra top. WOC 4 hrs. Tagged cement at 2461'. LD tubing, spotted 40 sx Class G, 1.15 yield, #15.8 cement from 1699-1182', covering PC and Fruitland top.

**SIMCOE**  
**Plug & Abandon SR**

<b>Well:</b>	GCU #239E	<b>API:</b>	30-045-25137
<b>Location:</b>	970' FSL & 1115' FEL	<b>Field:</b>	DK
<b>Sec,T, R:</b>	Sec 24 28N-13W	<b>Elevation:</b>	GL: 5943'
<b>Cnty/State:</b>	San Juan, New Mexico		
<b>Lat/Long:</b>	36.6431427, -108.1564282		

---

7/18/24 – Tagged cement at 1205' LD tubing. RU WL, perfed at 434'. RD WL. Pumped 255 sx Class G, 1.15 yield, #15.8 cement from 434'-surface, covering Kirtland, surface shoe, and Ojo Alamo top. Topped of w/ cement. ND BOP. Cut off WH, installed P&A marker. RDMO.

Submit a Copy To Appropriate District

Office

District I – (575) 393-6161

1625 N. French Dr., Hobbs, NM 88240

District II – (575) 748-1283

811 S. First St., Artesia, NM 88210

District III – (505) 334-6178

1000 Rio Brazos Rd., Aztec, NM 87410

District IV – (505) 476-3460

1220 S. St. Francis Dr., Santa Fe, NM

87505

State of New Mexico  
Energy, Minerals and Natural ResourcesForm C-103  
Revised July 18, 2013OIL CONSERVATION DIVISION  
1220 South St. Francis Dr.  
Santa Fe, NM 87505

WELL API NO. 30-045-25137
5. Indicate Type of Lease STATE <input type="checkbox"/> FEE <input type="checkbox"/>
6. State Oil & Gas Lease No. NMSF077966
7. Lease Name or Unit Agreement Name Gallegos Canyon Unit
8. Well Number 239E
9. OGRID Number
10. Pool name or Wildcat Basin Dakota

<b>SUNDRY NOTICES AND REPORTS ON WELLS</b> (DO NOT USE THIS FORM FOR PROPOSALS TO DRILL OR TO DEEPEN OR PLUG BACK TO A DIFFERENT RESERVOIR. USE "APPLICATION FOR PERMIT" (FORM C-101) FOR SUCH PROPOSALS.)	
1. Type of Well: Oil Well <input type="checkbox"/> Gas Well <input checked="" type="checkbox"/> Other <input type="checkbox"/>	
2. Name of Operator SIMCOE LLC	
3. Address of Operator 1199 Main Ave, Suite 101, Durango, CO 81301	
4. Well Location Unit Letter <u>P</u> : <u>970</u> feet from the <u>South</u> line and <u>1115</u> feet from the <u>East</u> line Section <u>24</u> Township <u>28N</u> Range <u>13W</u> NMPM San Juan County	
11. Elevation (Show whether DR, RKB, RT, GR, etc.) 5,943', GL	

## 12. Check Appropriate Box to Indicate Nature of Notice, Report or Other Data

NOTICE OF INTENTION TO:		SUBSEQUENT REPORT OF:	
PERFORM REMEDIAL WORK <input type="checkbox"/>	PLUG AND ABANDON <input type="checkbox"/>	REMEDIAL WORK <input type="checkbox"/>	ALTERING CASING <input type="checkbox"/>
TEMPORARILY ABANDON <input type="checkbox"/>	CHANGE PLANS <input type="checkbox"/>	COMMENCE DRILLING OPNS. <input type="checkbox"/>	P AND A <input checked="" type="checkbox"/>
PULL OR ALTER CASING <input type="checkbox"/>	MULTIPLE COMPL <input type="checkbox"/>	CASING/CEMENT JOB <input type="checkbox"/>	
DOWNHOLE COMMINGLE <input type="checkbox"/>			
CLOSED-LOOP SYSTEM <input type="checkbox"/>			
OTHER: <input type="checkbox"/>		OTHER: <input type="checkbox"/>	

13. Describe proposed or completed operations. (Clearly state all pertinent details, and give pertinent dates, including estimated date of starting any proposed work). SEE RULE 19.15.7.14 NMAC. For Multiple Completions: Attach wellbore diagram of proposed completion or recompletion.

7/1/24 – Casing 210 psi, Tubing 9 psi, Bradenhead 0 psi. MIRU service rig. NDWH. NUBOP. POOH production tubing. RIH 4.5" scraper.  
 7/2/24 – Casing 10 psi, Tubing 0 psi, Bradenhead 0 psi. RIH and POOH 4.5" scraper. RIH mill, worked through tight spot at 2535'.  
 7/3/24 – Casing 0 psi, Tubing 0 psi, Bradenhead 0 psi. POOH mill. RIH bit and scraper to 6210'. POOH bit. RIH 4.5" CR, set at 6192'. Loaded hole and circulated w/ 37 bbls. Attempted to pressure test casing, had injection rate of 1.5 bpm at 400 psi, POOH tubing.  
 7/8/24 – Casing 0 psi, Tubing 0 psi, Bradenhead 0 psi. Ran CBL from 6192' to surface. RIH tubing, spotted 83 sx Class G, 1.15 yield, #15.8 cement from 6192'-5123', covering the Dakota and Gallup tops. WOC 4 hrs. Tagged cement at 5064'. LD tubing, pressure tested casing, had injection rate of 1.5 BPM at 200 psi.  
 7/9/24 – Casing 0 psi, Tubing 0 psi, Bradenhead 0 psi. Spotted 15 sx Class G, 1.15 yield, #15.8 cement from 4486-4291', covering Mancos top. WOC 4 hrs. Tagged cement at 4328'. LD tubing, pressure tested casing, had injection rate of 1.5 BPM at 350 psi. Spotted 15 sx Class G, 1.15 yield, #15.8 cement from 3231'-3036', covering Mesaverde top. LD tubing, reverse cleaned.  
 7/10/24 – Casing 0 psi, Tubing 0 psi, Bradenhead 0 psi. Tagged cement at 3134'. Spotted additional 12 sx Class G, 1.15 yield, #15.8 cement on top of existing Mesaverde plug. WOC 4 hrs. Tagged cement at 2980'. LD tubing, pressure tested casing, had injection rate of 1.5 BPM at 380 psi. Spotted 20 sx Class G, 1.15 yield, #15.8 cement from 2622'-2364', covering Chacra top.  
 7/11/24 – Casing 0 psi, Tubing 0 psi, Bradenhead 0 psi. Tagged cement at 1838'. POOH and RIH bit. Drilled cement from 1838-1990' and 2579-2622'. RIH tubing to 2633', spotted 20 sx Class G, 1.15 yield, #15.8 cement, covering Chacra top. Applied 300 psi over the weekend.  
 7/15/24 – Casing 0 psi, Tubing 0 psi, Bradenhead 0 psi. Tagged cement at 2035'. POOH and RIH bit, drilled cement from 2035-2208', 2579-2589'. Received approval from BLM to not drill out 33' of hard cement.  
 7/16/24 – Casing 0 psi, Tubing 0 psi, Bradenhead 0 psi. POOH bit. RIH 4.5" packer, set at 2472'. Pressured up tubing and casing below to 800 psi, was able to pump into casing at 1.5 BPM at 430 psi. Set packer at 2411'. Same results on casing, tubing pressure dropped slowly. Set packer at 1729', same results. POOH packer, got stuck at 1640'. Was able to free packer and chase to bottom at 2533'.  
 7/17/24 – Casing 100 psi, Tubing 0 psi, Bradenhead 0 psi. Set 10k CIBP at 2520'. Spotted 8 sx Class G, 1.15 yield, #15.8 cement from 2520-2420', covering Chacra top. WOC 4 hrs. Tagged cement at 2461'. LD tubing, spotted 40 sx Class G, 1.15 yield, #15.8 cement from 1699-1182', covering PC and Fruitland top.  
 7/18/24 – Casing 0 psi, Tubing 0 psi, Bradenhead 0 psi. Tagged cement at 1205' LD tubing. RU WL, perfed at 434'. RD WL. Pumped 255 sx Class G, 1.15 yield, #15.8 cement from 434'-surface, covering Kirtland, surface shoe, and Ojo Alamo top. Topped off w/ cement. ND BOP. Cut off WH, installed P&A marker. RDMO.

Spud Date:

Rig Release Date:

I hereby certify that the information above is true and complete to the best of my knowledge and belief.

SIGNATURE Christy Kost TITLE Regulatory Analyst DATE 4/10/25Type or print name Christy Kost E-mail address: christy.kost@ikavenergy.com PHONE: 970-822-8931**For State Use Only**

APPROVED BY: \_\_\_\_\_ TITLE \_\_\_\_\_ DATE \_\_\_\_\_

Conditions of Approval (if any):

**SIMCOE**  
**Plug & Abandon SR**

<b>Well:</b>	GCU #239E	<b>API:</b>	30-045-25137
<b>Location:</b>	970' FSL & 1115' FEL	<b>Field:</b>	DK
<b>Sec,T, R:</b>	Sec 24 28N-13W	<b>Elevation:</b>	GL: 5943'
<b>Cnty/State:</b>	San Juan, New Mexico		
<b>Lat/Long:</b>	36.6431427, -108.1564282		

---

7/1/24 – Casing 210 psi, Tubing 9 psi, Bradenhead 0 psi. MIRU service rig. NDWH, NUBOP. POOH production tubing. RIH 4.5" scraper.

7/2/24 – Casing 10 psi, Tubing 0 psi, Bradenhead 0 psi. RIH and POOH 4.5" scraper. RIH mill, worked through tight spot at 2535'.

7/3/24 – Casing 0 psi, Tubing 0 psi, Bradenhead 0 psi. POOH mill. RIH bit and scraper to 6210'. POOH bit. RIH 4.5" CR, set at 6192'. Loaded hole and circulated w/ 37 bbls. Attempted to pressure test casing, had injection rate of 1.5 bpm at 400 psi. POOH tubing.

7/8/24 – Casing 0 psi, Tubing 0 psi, Bradenhead 0 psi. Ran CBL from 6192' to surface. RIH tubing, spotted 83 sx Class G, 1.15 yield, #15.8 cement from 6192'-5123', covering the Dakota and Gallup tops. WOC 4 hrs. Tagged cement at 5064'. LD tubing, pressure tested casing, had injection rate of 1.5 BPM at 200 psi.

7/9/24 – Casing 0 psi, Tubing 0 psi, Bradenhead 0 psi. Spotted 15 sx Class G, 1.15 yield, #15.8 cement from 4486-4291', covering Mancos top. WOC 4 hrs. Tagged cement at 4328'. LD tubing, pressure tested casing, had injection rate of 1.5 BPM at 350 psi. Spotted 15 sx Class G, 1.15 yield, #15.8 cement from 3231'-3036', covering Mesaverde top. LD tubing, reverse cleaned.

7/10/24 – Casing 0 psi, Tubing 0 psi, Bradenhead 0 psi. Tagged cement at 3134'. Spotted additional 12 sx Class G, 1.15 yield, #15.8 cement on top of existing Mesaverde plug. WOC 4 hrs. Tagged cement at 2980'. LD tubing, pressure tested casing, had injection rate of 1.5 BPM at 380 psi. Spotted 20 sx Class G, 1.15 yield, #15.8 cement from 2622'-2364', covering Chacra top.

7/11/24 – Casing 0 psi, Tubing 0 psi, Bradenhead 0 psi. Tagged cement at 1838'. POOH and RIH bit. Drilled cement from 1838-1990' and 2579-2622'. RIH tubing to 2633', spotted 20 sx Class G, 1.15 yield, #15.8 cement, covering Chacra top. Applied 300 psi over the weekend.

7/15/24 – Casing 0 psi, Tubing 0 psi, Bradenhead 0 psi. Tagged cement at 2035'. POOH and RIH bt, drilled cement from 2035-2208', 2579-2589'. Received approval from BLM to not drill out 33' of hard cement.

7/16/24 – Casing 0 psi, Tubing 0 psi, Bradenhead 0 psi. POOH bit. RIH 4.5" packer, set at 2472'. Pressured up tubing and casing below to 800 psi, was able to pump into casing at 1.5 BPM at 430 psi. Set packer at 2411'. Same results on casing, tubing pressure dropped slowly.

**SIMCOE**  
**Plug & Abandon SR**

<b>Well:</b>	GCU #239E	<b>API:</b>	30-045-25137
<b>Location:</b>	970' FSL & 1115' FEL	<b>Field:</b>	DK
<b>Sec,T, R:</b>	Sec 24 28N-13W	<b>Elevation:</b>	GL: 5943'
<b>Cnty/State:</b>	San Juan, New Mexico		
<b>Lat/Long:</b>	36.6431427, -108.1564282		

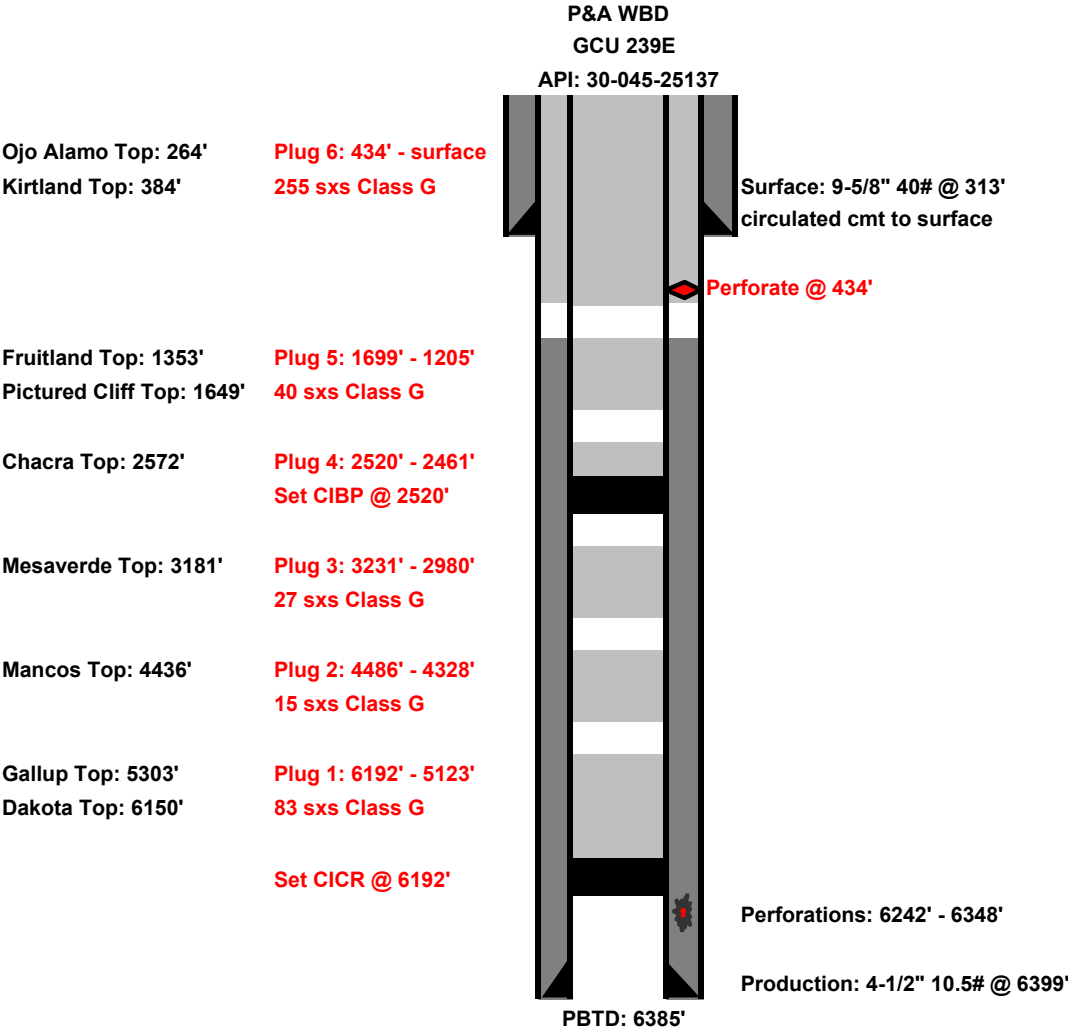
---

Set packer at 1729', same results. POOH packer, got stuck at 1640'. Was able to free packer and chase to bottom at 2533'.

7/17/24 – Casing 100 psi, Tubing 0 psi, Bradenhead 0 psi. Set 10k CIBP at 2520'. Spotted 8 sx Class G, 1.15 yield, #15.8 cement from 2520-2420', covering Chacra top. WOC 4 hrs. Tagged cement at 2461'. LD tubing, spotted 40 sx Class G, 1.15 yield, #15.8 cement from 1699-1182', covering PC and Fruitland top.

7/18/24 – Casing 0 psi, Tubing 0 psi, Bradenhead 0 psi. Tagged cement at 1205' LD tubing. RU WL, perfed at 434'. RD WL. Pumped 255 sx Class G, 1.15 yield, #15.8 cement from 434'-surface, covering Kirtland, surface shoe, and Ojo Alamo top. Topped of w/ cement. ND BOP. Cut off WH, installed P&A marker. RDMO.





Sante Fe Main Office  
Phone: (505) 476-3441

General Information  
Phone: (505) 629-6116

Online Phone Directory  
<https://www.emnrd.nm.gov/oed/contact-us>

State of New Mexico  
Energy, Minerals and Natural Resources  
Oil Conservation Division  
1220 S. St Francis Dr.  
Santa Fe, NM 87505

CONDITIONS

Action 450969

CONDITIONS

Operator: SIMCOE LLC 1199 Main Ave., Suite 101 Durango, CO 81301	OGRID: 329736
	Action Number: 450969
	Action Type: [C-103] Sub. Plugging (C-103P)

CONDITIONS

Created By	Condition	Condition Date
mkuehling	well plugged 7/18/2024	5/1/2025