

Santa Fe Main Office
Phone: (505) 476-3441
General Information
Phone: (505) 629-6116

State of New Mexico
Energy, Minerals and Natural Resources

Form C-103
Revised July 18, 2013

Online Phone Directory Visit:
<https://www.emnrd.nm.gov/ocd/contact-us/>

OIL CONSERVATION DIVISION
1220 South St. Francis Dr.
Santa Fe, NM 87505

SUNDRY NOTICES AND REPORTS ON WELLS (DO NOT USE THIS FORM FOR PROPOSALS TO DRILL OR TO DEEPEN OR PLUG BACK TO A DIFFERENT RESERVOIR. USE "APPLICATION FOR PERMIT" (FORM C-101) FOR SUCH PROPOSALS.) 1. Type of Well: Oil Well <input checked="" type="checkbox"/> Gas Well <input type="checkbox"/> Other <input type="checkbox"/>		WELL API NO. 30-015-26086
2. Name of Operator SPUR ENERGY PARTNERS LLC on OCD's behalf of LLJ Ventures, LLC DBA Marker Oil & Gas		5. Indicate Type of Lease STATE <input checked="" type="checkbox"/> FEE <input type="checkbox"/>
3. Address of Operator 9655 KATY FREEWAY, SUITE 500, HOUSTON, TX 77024		6. State Oil & Gas Lease No.
4. Well Location Unit Letter <u>D</u> : <u>330</u> feet from the <u>NORTH</u> line and <u>330</u> feet from the <u>WEST</u> line Section <u>16</u> Township <u>17S</u> Range <u>31E</u> NMPM <u>EDDY</u> County		7. Lease Name or Unit Agreement Name KERSEY STATE
11. Elevation (Show whether DR, RKB, RT, GR, etc.)		8. Well Number <u>3</u>
9. OGRID Number		10. Pool name or Wildcat GRAYBURG-JACKSON-SR-Q-G-SA

12. Check Appropriate Box to Indicate Nature of Notice, Report or Other Data

NOTICE OF INTENTION TO: PERFORM REMEDIAL WORK <input type="checkbox"/> PLUG AND ABANDON <input type="checkbox"/> TEMPORARILY ABANDON <input type="checkbox"/> CHANGE PLANS <input type="checkbox"/> PULL OR ALTER CASING <input type="checkbox"/> MULTIPLE COMPL <input type="checkbox"/> DOWNHOLE COMMINGLE <input type="checkbox"/> CLOSED-LOOP SYSTEM <input type="checkbox"/> OTHER: <input type="checkbox"/>		SUBSEQUENT REPORT OF: REMEDIAL WORK <input type="checkbox"/> ALTERING CASING <input type="checkbox"/> COMMENCE DRILLING OPNS. <input type="checkbox"/> P AND A <input checked="" type="checkbox"/> CASING/CEMENT JOB <input type="checkbox"/> OTHER: <input type="checkbox"/>	
--	--	--	--

13. Describe proposed or completed operations. (Clearly state all pertinent details, and give pertinent dates, including estimated date of starting any proposed work). SEE RULE 19.15.7.14 NMAC. For Multiple Completions: Attach wellbore diagram of proposed completion or recompletion.

Please find the subsequent P&A report, plugged wellbore diagram and photo of dryhole marker for your review.

Spud Date:

Rig Release Date:

I hereby certify that the information above is true and complete to the best of my knowledge and belief.

SIGNATURE Sarah Chapman TITLE REGULATORY DIRECTOR DATE 04/28/2025

Type or print name SARAH CHAPMAN E-mail address: SCHAPMAN@SPURENERGY.COM PHONE: 832-930-8613

For State Use Only

APPROVED BY: _____ TITLE _____ DATE _____

Conditions of Approval (if any):

Kersey State 3 Daily P&A Ops Summary

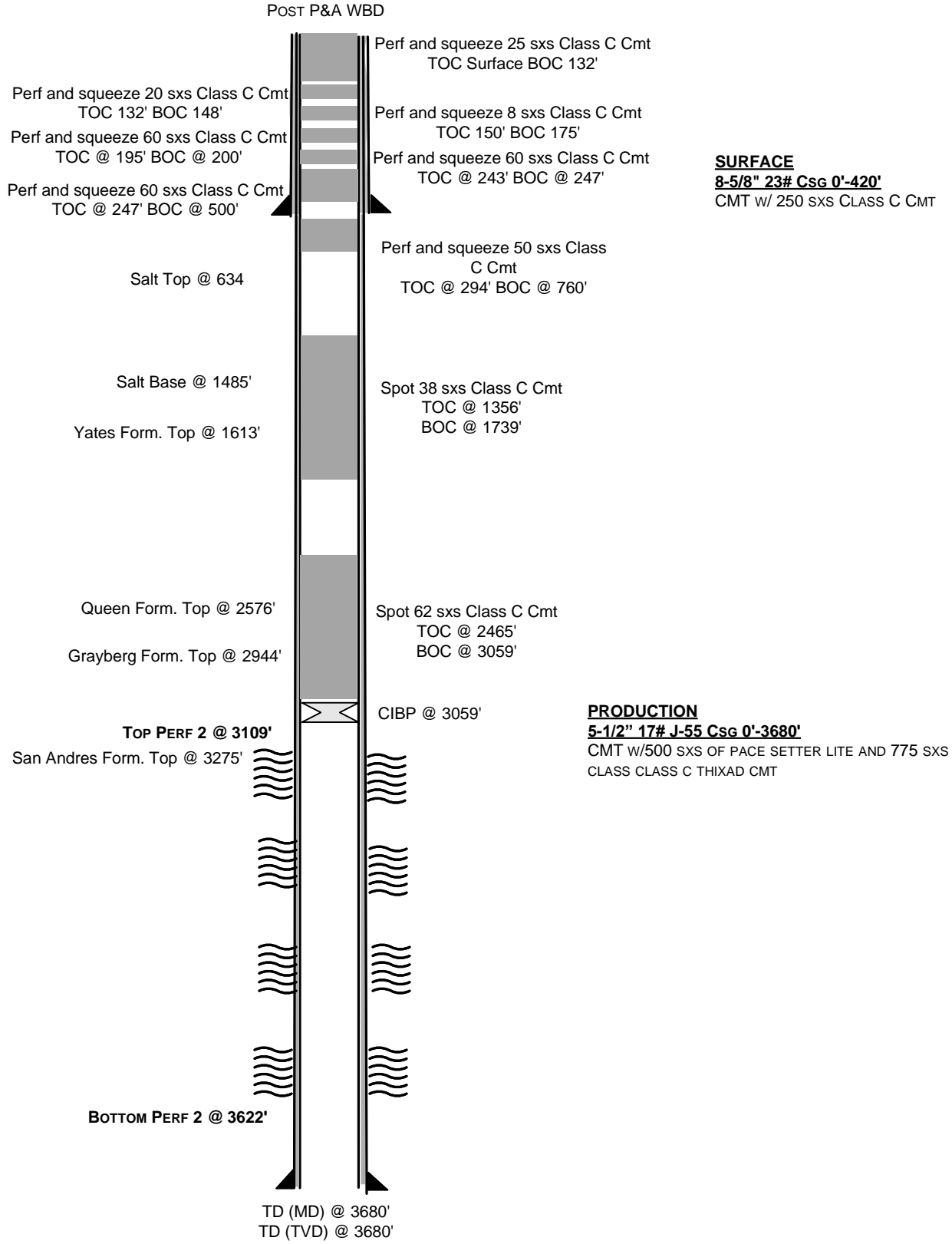
Begin	End	Summary
3/21/25	3/21/25	JSA HSE topic trapped pressure MIRU bleed well down TOO H with rods ND WH NU BOP TOO H with 2 7/8 production tubing secure well SDFN travel
3/24/25	3/24/25	JSA HSE topic hand placement RU WL WIH GRJB to 3090' RIH with CIBP set @ 3059' Load well RIH log well from 3059'- 450' possible hole in well, TIH tag CIBP 3059' RU pump to tubing, tray to break circulation well did circulate m&P plug 1 from 3059-2450' 62 sxs Class C cement 1.32 yield 14.8# TOO H LD 19 SB 10 WOC ON Secure well SDFN travel
3/25/25	3/25/25	JSA HSE topic Proper too; for the job TIH tag plug #1 @ 2465' TOO H TIH with 5 1/2" packer to isolate hole isolated hole @ 453' TOO H remove packer wait in orders, ordered to pump plug 2 TIH to 1739 RU pump to tubing inject M&P plug 2 38 sx Class C cement 1.32 yield 14.8# TOO H LD 10 SB 10 WOC ON secure well SDFN travel
3/26/25	3/26/25	JSA HSE topic spotters TIH tag plug 2 @ 1356' TOO H wait on orders RU WL RIH perf @ 760' (per NMOCD loren)TIH with 5 1/2" packer RU pump establish injection rate M&P plug 3 760' 50 sxs Class C cement 132 yield 14.8# TOO H with 5 1/2" packer WOC ON Secure well SDFN travel
3/27/25	3/27/25	JSA HSE topic housekeeping TIH tag plug 3 @ 500' contact NMOCD wait on orders are to perf at 500' establish injection rate, RU WL RIH perf @ 500' TIH set packer establish injection rate pumped 100 bbls did not circulate out of annulus, Spoke to NMOCD orders were to pump 60 sxs displace to 250 TIH with packer set RU pump M&P plug 4 @ 250-500 60 sxs Class C cement 1.32 yield 14.8# shut in well secure well SDFN travel
3/28/25	3/28/25	JSA HSE topic explosive safety TIH tag plug 4 @ 247' tooh Call NMOCD to see move forward orders were to perf @ 247' and displace to 100' wait on WL RU WL RIH perf @ 247 RD TIH with 5 1/2" packer Establish injecton pump 45 bbls no circulation out of BH RU pump to BH try to establish injection rate found a hole on surface casing 6" below valve, RU pump to tubing establish injection rate M&P plug 5 60 sxs displace down to 100' Shut ing well Secure well SDFN travel
3/31/25	3/31/25	JSA HSE topic static electricity open well TOO H with packer TIH tag plug 5 @ 243' Call NMOCD wait for orders, Orders were to perf @ 200' and pump 60 sxs RU WL RIH perf @ 200' TIH set packer establish injection pump 30 bbls M&P plug 6 200'-100 60 SXS 1.32 yield 14.8# TOO H WOC 5 hrs TIH tag plug 6 @ 195' call NMOCD orders are to perf @ 175' and pump 60 sxs RU WL RIH perf 175' TIH set packer RU pump to tubing establish injection pump 30 bbls no circulation out of

		annulus, M&P plug 7 60 sxs 175-100' 1.32 yield 14.8# shut well in WOC ON secure well SDFN travel
4/1/25	4/1/25	JSA HSE topic weather conditions Open well no pressure and well not on a vacuum, TIH tag plug 7 @ 179' 3' below perfs no cement inside 5 1/2" casing cavern drank all cement TOO H RU pump to casing side to try and load well to see if well would load pumped 20bbls well did not load and kept drinking water so indicates that perfs are still open at 175' Call NMOCD for orders NMOCD recommended we cover up hole in 8 5/8" surface casing to pump in through annulus, for that they recommend we pump cedar fiber and mica flakes mix to try and recover circulation, to fix hole in casing we need a 8 5/8 clamp, order everything, dig out cellar to uncover hole in casing, Secure well SDFN travel could not get all stuff delivered today.
4/2/25	4/2/25	JSA HSE topic pinch points dig round to look for hole in surface casing, wait on LCM Shut down travel
4/3/25	4/3/25	JSA HSE topic trapped pressure TIH to 175' tag RU pump to tubing try to load well (well did not load)RU pump to tubing M&P LCM pill 1 pump let set SB 2 TIH to 175 load well well did load M&P plug 8 5 SXS Class C cement 1.32 yield 14.8 had good circulation well did not go on a vacuum, woc ON ALL this per NMOCD (loren Deide) secure well SDFN travel
4/4/25	4/4/25	JSA HSE Topic PPE TIH tag plug 8 @ 150' Speak to NMOCD wait on orders load well on the 5 1/2 well loaded and held water orders were to load Annulus, started tom load annulus and started leaking out of surface casing dig down deeper to find hole int the surface casing, dug about 3 more feet hole is visible about 7' from GL wait in orders from NMOCD orders are to pressure test casing, pump could not make it to location due to muddy road secure well SDFN travel
4/7/25	4/7/25	JSA HSE topic hand placement RU pump to tubing try to pressure test casing it did not test Spoke to NMOCD orders are to perf at 148' try to circulate RU WL RIH perf 148' TIH with packer to 90' well did not circulate, Spoke to NMOCD orders ae to pump 20 sxs with LCM WOC M&P 20 sxs class C cement 1.32 yield 14.8# WOC ON shut well in secure well SDFN travel
4/8/25	4/8/25	JSA HSE topic slippery surfaces Open well up unset packer TOO H remove packer TIH tag plug 9@ 140' TOO H RU pump load well to see if casing is holding well does hold fluid, Secure well SDFN (drum rollers in draw works broke off removed to replace)travel
4/9/25	4/9/25	JSA HSE topic explosive safety ITH tag plug 9 @ 132' load well, well is holding water, Speak to NMOCD wait on orders(want to perf at TOC try to circulate)RU RL RIH perf @ 132' RU Pump try to get injection rate well did take injection but did not circulate out of BH speak to NMOCD (Loren Deidi) orders are to pump from surface 25 sxs with

		LCM M&P plug 10 25 sxs Class C cement With LCM well did not pressure up and did not go on a vacuum (the orders NMOCD gave are with the idea of it going on a vacuumed and talking it to the perfs NMOCD approved
4/25/25	4/25/25	Notified BLM/NMOCD and installed dryhole marker.

Eddy County, NM
API# 30-015-26086

SPUD DATE: 4/25/89
ELEV: 3,788' GL, XX' KB



Kersey State 3



Sante Fe Main Office
Phone: (505) 476-3441

General Information
Phone: (505) 629-6116

Online Phone Directory
<https://www.emnrd.nm.gov/oed/contact-us>

State of New Mexico
Energy, Minerals and Natural Resources
Oil Conservation Division
1220 S. St Francis Dr.
Santa Fe, NM 87505

CONDITIONS

Action 456099

CONDITIONS

Operator: Spur Energy Partners LLC 9655 Katy Freeway Houston, TX 77024	OGRID: 328947
	Action Number: 456099
	Action Type: [C-103] Sub. Plugging (C-103P)

CONDITIONS

Created By	Condition	Condition Date
loren.diede	None	5/7/2025