

Submit a Copy To Appropriate District  
Office  
District I – (575) 393-6161  
1625 N. French Dr., Hobbs, NM 88240  
District II – (575) 748-1283  
811 S. First St., Artesia, NM 88210  
District III – (505) 334-6178  
1000 Rio Brazos Rd., Aztec, NM 87410  
District IV – (505) 476-3460  
1220 S. St. Francis Dr., Santa Fe, NM  
87505

State of New Mexico  
Energy, Minerals and Natural Resources

Form C-103  
Revised July 18, 2013

OIL CONSERVATION DIVISION  
1220 South St. Francis Dr.  
Santa Fe, NM 87505

WELL API NO. <b>30-015-45237</b>	
5. Indicate Type of Lease STATE <input checked="" type="checkbox"/> FEE <input type="checkbox"/>	
6. State Oil & Gas Lease No.	
7. Lease Name or Unit Agreement Name <b>Poker Lake Unit 36 DTD State SWD</b>	
8. Well Number <b>001</b>	
9. OGRID Number <b>373075</b>	
10. Pool name or Wildcat <b>SWD;Devonian</b>	

<b>SUNDRY NOTICES AND REPORTS ON WELLS</b> (DO NOT USE THIS FORM FOR PROPOSALS TO DRILL OR TO DEEPEN OR PLUG BACK TO A DIFFERENT RESERVOIR. USE "APPLICATION FOR PERMIT" (FORM C-101) FOR SUCH PROPOSALS.)	
1. Type of Well: Oil Well <input type="checkbox"/> Gas Well <input checked="" type="checkbox"/> Other <b>SWD</b>	
2. Name of Operator <b>XTO Permian Operating Inc.</b>	
3. Address of Operator <b>6401 Holiday Hill Rd, Midland TX 79705</b>	
4. Well Location Unit Letter <b>A</b> : <b>660'</b> feet from the <b>FNL</b> line and <b>660'</b> feet from the <b>FEL</b> line Section <b>36</b> Township <b>24S</b> Range <b>30E</b> NMPM County <b>Eddy</b>	
11. Elevation (Show whether DR, RKB, RT, GR, etc.) <b>3438'</b>	

12. Check Appropriate Box to Indicate Nature of Notice, Report or Other Data

NOTICE OF INTENTION TO:		SUBSEQUENT REPORT OF:	
PERFORM REMEDIAL WORK <input type="checkbox"/>	PLUG AND ABANDON <input type="checkbox"/>	REMEDIAL WORK <input checked="" type="checkbox"/>	ALTERING CASING <input type="checkbox"/>
TEMPORARILY ABANDON <input type="checkbox"/>	CHANGE PLANS <input type="checkbox"/>	COMMENCE DRILLING OPNS. <input type="checkbox"/>	P AND A <input type="checkbox"/>
PULL OR ALTER CASING <input type="checkbox"/>	MULTIPLE COMPL <input type="checkbox"/>	CASING/CEMENT JOB <input type="checkbox"/>	
DOWNHOLE COMMINGLE <input type="checkbox"/>			
CLOSED-LOOP SYSTEM <input type="checkbox"/>			
OTHER: <input type="checkbox"/>		OTHER: <input type="checkbox"/>	

13. Describe proposed or completed operations. (Clearly state all pertinent details, and give pertinent dates, including estimated date of starting any proposed work). SEE RULE 19.15.7.14 NMAC. For Multiple Completions: Attach wellbore diagram of proposed completion or recompletion.

XTO Permian Operating LLC. respectfully requests your approval for workover operations that have been performed per the attached Workover Summary Report, Current WBD, and MIT test.

Spud Date:

11/27/2018

Rig Release Date:

I hereby certify that the information above is true and complete to the best of my knowledge and belief.

SIGNATURE Kristen Houston TITLE Regulatory Analyst DATE 05/20/2025

Type or print name Kristen Houston E-mail address: kristen.houston@exxonmobil.com PHONE: (432-894-1588)

**For State Use Only**

APPROVED BY: \_\_\_\_\_ TITLE \_\_\_\_\_ DATE \_\_\_\_\_

Conditions of Approval (if any):

**Poker Lake Unit 36 DTD State SWD 001**  
**API 30-015-45237**  
**Workover Summary Report**

2/08/25-2/15/25: MIRU

2/16/25: Pump 100 bbls w/ 25 gal H2S Scav in lead. Beg pump 3.5 bpm at 1100 psi. End pump 3.3 bpm at 1300 psi. SD. ISIP tbg 1150, csg 1100. Well Secure.

2/17/25: MU 5-1/2" 5K Lube w/ Man Single WLV, Bleed off, Pump in sub. PU 3.62" GR on #10 JB (2.75" od), 2.75" CCL, 2.75" x 7' Wt Bar, 1.44" Rope Socket on 9/32" E-line. Set on Well. Fill Lube to Pres Test. Test 1000 psi. Good. OW w/ 600 psi on tbg. Rih. Tag at 16,656' w/ GR. (Looks to be RN below Pkr. Pooh. FL looks to be 7360'. Bump up. SWI. Come off well. JB clean. LD Tools and Lube. Secure Well. 1/19/25: RUSU. Set CoFo, Check Brakes, Check Dogs. Original Hole NU 1502" Pump in Flange on Tree. NU WL Tree cap on top of Tree. Pres Test 1502 flange to 5500 high and 3000 low. Good.

2/18/25: Pooh. Found broken wire. Re-Head. PU tools. Pres Test. OW w/ 400 psi. Rih back to depth of 8400'. Run down. Able to pass thru FA-1 pkr and Tail pipe into 7" Csg below. Log up. Tie in to Pkr Assy. Log to surface. LD Tools. Secure Well. Found Disk Burst Sub at 16,656', 7" FA Pkr at 16,634', Top of SA at 16,631+. 10' x 4-1/2" sub. Have 221-jts 4-1/2" 13.5#, X-over at 7380' (WLM) and 183-jts 5-1/2" 17#.

2/19/25: PU Tbg Punch 453 Charge, 3.2 gram, .41 EH, .375-.50" pent. 1-9/16" OD. Rih. Tie in X-over at 7380'. Tie in Pkr and 10' Sub. Spot at 16,622' and Perf 10' Sub at 16,626'. Pump at 2 bpm w/ pres coming up to 1100 psi. Perf. Pres dropped. Line Tension lightened up. Drop down and log past perfs. Seen perf wounds. Pooh. ASC. RD EWL. Pump total 761 bbls down csg and 325 bbls down tbg. Monitor well. 9 min and well on Vacuum. Shut in and Secure Well,

2/20/25: Load Hole w/ 81 bbls 10#. FL at 1265'. Well on Vac. ND Tree Cap. Install 5" BPV. NU Tree Cap w/ 5" LTC. ND WH. Clean Threads in Hanger. Threads look good. Install 5-1/2" BTC Sub. PU on Hanger. Pull to 200K to get hanger to come free. PU 1' w/ Wt at 150K. NU 11" 5K Double Gate (3-1/2" - 5-1/2" VBR in Top Gate), w/ 11" 5k x 11" 10K Spool. Swap BPV w/ TWC. Test Blinds 300 low and 4000high. Good. Pull TWC. Install 5-1/2" Sub in Hanger. Attempt to test VBR. Leaks. Remove 51/2" Sub and Secure Well w/ Blind Rams.

2/21/25: Load Hole w/ 81 bbls 10#. FL at 1265'. Well on Vac. Pull VBR Rams. Found wrong size Rams in Bop. Wrong size on location. Wait on Right Rams. Install Straight 5-1/2" Rams. Test Rams 358 low for min. and 4250 high for 5 min. Good. PU Pwr Swivel. PU on 5-1/2" String. Put 2000 ft lbs torque and pull up to 215K. Did not have rotation in string. Come down and Land Hanger. Secure Well for night. Crew Travel.

2/22/25: PU on Tbg. Hanger moving at 140K. Pull up 10.5'. To cover Compression and Stretch. Work Tbg w/ 2000 to 3000 ft lbs torque. Work line scale 230k 140k, No Success. Discuss with Pat. Pump 10# Brine w/ PoP down csg and displace to spot in 7". Pump broke down w/ 500 bbls displaces. Changed out Line Scale. PU on tbg. St Wt moves at 150k now. Pull up to 225K in 11'. Slack off and land hanger. Secure Well

2/23/25: Finish spot PoP in 7". Work String w/ Pwr Swivel. Torque at 3500.

Work String 150-230k. No Change. RD Pwr Swivel. Wait on Wireline. ReHead. Repair Slip Rings on RU Ranger EWL. (16' bails. Have Elevator on 4' PH6 sub. TIW above elev. X-O, Pump In Sub, and Packoff) PU 1-7/16" FP tools. RIH. Made 3 Readings. FP indicates 100% free at 15,712' and to have movement in Btm 2 jts Starting at 212K up to 230K. Pooh. RD EWL. Secure Well.

2/24/25: Rig up Pwr Swivel. Work Tbg String 140K - 230K. Torque at 3000 Ft Lbs. No Change. RU EWL to Run thru Pwr Swivel. Rih w/ 111/16"Wt Bar/Tools w/240 grain String Shot. Tie in and Spot in SA. Put St Wt at 215K. 3000 Ft Lbs, 3 Rds to Right. Pop shot. Gain 1/2 Rd to Right. No Wt Change. Work Tbg w/ Swivel 200K-220K, 200K-225k, 195k-230k. No Success. Pooh w/ WL. RD Pwr Swivel. Secure Well for Night.

2/25/25: PU on TBG. Set Slips at 230K. Close Pipe. RU EWL w/ 16' bails, Pack Off, Pump in, WLV's on 4-1/2" EUR TIW. Rih. Tie in on x-over. Down to Depth. Spot Cutter at 16,444'. Fire Cutter. Felt bounce in Tbg. Log Strip. Show 4' separation. Pooh w/ EWL PU on Tbg. Have Travel at 220K (Ind). Move 4' clean. Lower back down. RD EWL. RU Butch's Csg. LD Hanger and PxP Sub. LD Lift Sub. Traveling at 220K. Begin LD 5-1/2" 17# P-110 BTC Inj Tubing. LD 53-jts 5-1/2". Lost Belt on Air Comp of rig. SDFN. Secure Well.

2/26/25: TOOHD LD 183 jnt's 5 1/2 BTC. Change Ram Blocks to 3 1/2- 5 1/2 variable rams. Test rams to 4k. high and 300 low psi.

2/27/25: TOOHD LD 217 jnt's 4 1/2 BTC. Total footage OOH 16,459'.

2/28/25: rep tbg/Tally and drift.

3/01/25: ND BOP due to rams not shutting all the way. NU test BOP's to 4k high and 300 psi low.

Good test. TIH w/ 3.947 spear/ 4.73" OD x over/3 1/2 ph6 pup jnt 5.73'/ 4.22 x over/4.25" bowen LBS/ Bowen 4.24 Super jar w/ 62k over pulling/ 4.33 x over and 142 jnt's. 2/30/25: IH w/ 3.947 spear/ 4.73" OD x over/3 1/2 ph6 pup jnt 5.73'/ 4.22 x over/4.25" bowen LBS/ Bowen 4.24 Super jar w/ 62k over pulling/ 4.33 x over and 400 jnt's.

3/2/25: TIH w/ 3.947 spear/ 4.73" OD x over/3 1/2 ph6 pup jnt 5.73'/ 4.22 x over/4.25" bowen LBS/ Bowen 4.24 Super jar w/ 62k over pulling/ 4.33 x over and 400 jnt's

3/3/25: TIH w/ 3.947 spear/ 4.73" OD x over/3 1/2 ph6 pup jnt 5.73'/ 4.22 x over/4.25" bowen LBS/ Bowen 4.24 Super jar w/ 62k over pulling/ 4.33 x over and 420 jnt's

3/4/25: TIH w/ 3.947 spear/ 4.73" OD x over/3 1/2 ph6 pup jnt 5.73'/ 4.22 x over/4.25" bowen LBS/ Bowen 4.24 Super jar w/ 62k over pulling/ 4.33 x over and 529 jnt's.

3/5/25: Haul in 2 loads 10# brine water.

3/6/25: TIH w/ 3.947 spear/ 4.73" OD x over/3 1/2 ph6 pup jnt 5.73'/ 4.22 x over/4.25" bowen LBS/ Bowen 4.24 Super jar w/ 62k over pulling/ 4.33 over and 531 jnt's. Speer into TOF at 16,451'. Pulled 25k over string wt to 210k. Fired jars 2 times to set grapple. Dropped down to 7k-8k-6k-9k-4k to attempt to release SA w/ no success. PU to 35k over string wt set jars off. Put 7 pounds of torque (2,700#'s) in pipe from 30k over string wt worked down to 10k over when we lost torque 3 times with no success. PU 3k-2k-5k over and tried to release sa with no success. RD swivel. TOH w/ 3 1/2 WS(70 stands) and Speer/BHA Crew Travel. Well Secure.

3/7/25: TOH w/3.947 spear/ 4.73" OD x over/3 1/2 ph6 pup jnt 5.73'/ 4.22 x over/4.25" bowen LBS/ Bowen 4.24 Super jar w/ 62k over pulling/ 4.33 x over and 3 1/2 WS (220 stands) LD 91 jnt's. Appears we had full bite w/ grapple. Minimal damage to grapple no broken teeth just a few dulled. Grapple appeared in fair shape. Appears it was just being rotated into released position and releasing.

3/8/25: TIH w/5.88 fluted guide w/ ID 4.48/ 5 3/4 OS dressed w/ 4 1/2 RHW grapple, / 4.22 x over/4.25" bowen LBS/ Bowen 4.24 Super jar w/ 62k over pulling/ 4.33 x over and 3 1/2 WS (200 stands).

3/9/25: Cont. TIH w/5.88 fluted guide w/ ID 4.48/ 5 3/4 OS dressed w/ 4 1/2 RHW grapple, / 4.22 x over/4.25" bowen LBS/ Bowen 4.24 Super jar w/ 62k over pulling/ 4.33 x over and 3 1/2 WS (530 jnt's). Spaced out w/10' sub 4' in.

3/10/25: 0 bbl's down tbg at 2 bbl's a min. 300 psi. Dress TOF at 16,451'. Up wt 180k pumping 1bbl a min. Down wt is 178k pumping 1 bbl a min. Tag TOF watch bumper sub close set down 1k. Dressed TOF wi 1-300 FT#'s of torque. Latch fish by rotating very slowly. Went down 5' from TOF. PU to 220k set jars off then attempted to release SA. Closed bumper sub. PU to 176-187k w/ 3700 ft#'s of torque while pumping 2 bbl's a min at 300 psi. trying to release SA. W/ no success. It appears we released off fish. Latch back up work pipe from 176-230k w/ 3700 ft#'s of torque while pumping 3 bbl's a min at 700 psi. trying to release SA. W/ no success. Well loaded w/ fluid at 180 bbl's pumped. It appears we released off fish. Latch back up work pipe from 176-230k w/ 3700 ft#'s of torque while pumping 3 bbl's a min at 700 psi. trying to release SA. W/ no success. Released off fish. Latch back up to fish pull up to 210k. Slackoff to 195k.

3/11/25: 20 bbl's down tbg at 2 bbl's a min. 300 psi. PU wt 180 k pu to 184k turn to the right 6 rounds appear grapple slipped off. RD Swivel. TOOH w/ LD 91 jnt's. Stand back 100 stands. Total 291 jnt.

3/12/25: OOH w/ LD 91 jnt's. Stand back 100 stands. Total 530 jnt's LD BHA. No fish.

Findings: Tang is broke off spiral grapple and Partial break on the control. Light wear on top sub.

3/13/25: RU Ranger EWL. 5-1/2" 5k PCE w/ 11" 10k Flange to BOP. PU 3.65" GR on 2-1/8" Spang Jars, 2-1/8" CCL, Bow Spring Centralizer, 111/16" Wt Bar, Bow Spring, 1-7/16" Rope Socket. Set Lube onto Well. Pres Test Lube to 1000 Psi. (Tighten to Pass). OW w/ 0 psi and Rih at 11:00. Went into 7" LT at 11,613' Clean. On down and into 4-1/2" TOF at 16,444' w/o Tagging. Log up out of fish.

Correlate Depth. Run down. Had to work GR to get into Fish. Down to tag at 16,632' (3.688" R-Nipple). Pullout of fish. Had to work several times to get into Fish. Pooh. MU 3.625" Jet Cutter. w/ Shock Subs, 2-1/8" CCL, Bow Spring Centralizer, 1-11/16" Wt Bar, Centralizer, Rope Socket. Stab onto Well. OW at 14:30 w/ 0 psi. Rih. Went into 7" Liner clean. Run down and into 4-1/2" Fish Top w/o Tagging. Correlate w/o pulling out of fish. Down to tag at 16,632' (3.688" R Nipple). Pull up and spot to cut at 16,628'. (7' below Cplg on 10' Sub.). Pooh. RD Ranger EWL.

3/14/25: MU 5-7/8" OS (5.91" od) w/ 4-1/2" RHS Grapple, Mill control, Tag Welded to Top Sub (31/2" IF) and 3-1/2" PH6 x3-1/2" IF X-over. Rih on 3-1/2" 12.95# S-135 PH6 Tbg. H2S Drill. Discuss Escape, Rescues. Training. Certifications. Cont Rih w. OS on Tbg. Ran 298 jts total in Eot at 8949'. SD due to Weather.

3/15/25-3/16/25: Haul equip to and from location.

3/17/25: Cont Rih w/ 5-7/8" OS (5.91" od) w/ 4-1/2" RHS Grapple, Mill control, Tag Welded to Top Sub (3-1/2" IF) and 3-1/2" PH6 x 3-1/2" IF Xover on 3-1/2" 12.95# S-135 PH6 Tbg. Ran 531 -jts 3-1/2" PHC. RU Pwr Swivel w/ 9.5' and 6.5' PH6 Tbg Subs. ST Wt 178K up, 172K down. 176K w/ 200 ft lbs rotate. Work OS at Fish Top to get latched onto Fish. Did not see swallow. Rotate as work down to latch onto fish. Discuss with Pat. Line up EWL for AM. Secure Well

3/18/25: LD 2) 3-1/2" PH6 WS Subs. MIRU Ranger EWL. RU to run thru Pwr Swivel. Rih w/ 111/16" Tools w/ CCL on btm. Log and tie into OS at 16,636'. Log thru Fish of 4-jts 4-1/2" BTC Inj String. Raise Tbg up 10'. Verify that fish also came up hole. Pooh. RDMO Ranger EWL. RD and Rack out Pwr Swivel. MIRU Acid Tech. Pres Test lines 300 psi low, 7200 psi high. Good. OW at 16:00 w/ 0 psi. Fill w/ 47 bbls. Pump 58 bbls to verify well taking fluid. Start at 4 bpm w/ 1775 psi. Pressure walking up. Drop rate to 3.5 bpm. Pres held at 1975 psi on tbg. Pump 105 bbls 10#. Swap to 15% HCL w/ 90/10 blend xylene. Pressure walking up as pumping HCL. After HCL got packer, the pressure started to drop. Annulus went on Vacuum. Tbg start dropping slightly. Work rate to 5.5 bpm at 2500 psi. Displace w/ 110 bbls 10# w/ H2S Scav. Shut down. Tbg ISIP on vacuum. Shut in and Secure Well. RDMO Acid Tech.

3/19/25: Pooh as LD 54 jts 3-1/2" PH6 WS. Shut down for Wind.

3/20/25: Shut down for weather.

3/21/25: ont Pooh w/ 237-Jts 3-1/2" PH6 WS, OS, and Fish. Have ttl 294 jts out. Cont Pooh w/ Total 531 -jts 3-1/2" PH6 WS out. Have 4-1/2" Fish in overshot. Rlg tongs unable to break BT Connections. Lower below Bop. Shut in and Secure Well.

3/22/25: MIRU Butch's Csg Crew. LD 1-jt 3-1/2" WS, Overshot, 10' Piece of Cut of 4-1/2" BTC, 4 jts 4-1/2" BTC, 6' cut off piece of 10' sub. RD Csg. Pres Test BOP (21 Day test). RU Sonic. Test Blinds 350 low 5 min, 4000 high 5 min. Test Pipes 390 low 5 min. 4200 high 5 min. RD Sonic. MU and Rih w/ 5-3/4" Shoe (Crown 5.88" os x 4.93" id x 4.50" flute), x-over, 4.25" LBS, 4.25" Jar, x-over. Rih on 323-jts 3-1/2" 12.95# S135 PH6 WS. EOT at 10,018.

3/23/25: Cont Rih w/ 5-3/4" (5-15/16" x 4-1/2") Shoe, XO, LBS, Jar, X-O jon 3-1/2" PH6 WS. RU Pwr Swivel w/ jt #537. Shoe at (16,610'w/ 536 in) Pump 1 bpm down Csg. Drop down and Dress off TOF at 16,625'. Swallow 3' w/ Shoe. RD Pwr Swivel. LD jt 537.

3/24/25: Pooh as LD 3-1/2" Tbg (98 jts). LEL Drill. Discuss Process and Duties. Cont Pooh w/ 92 jts 3-1/2" WS and Shoe. (Total out 190 jts). Cont Pooh w/ 3-1/2" WS and Shoe. POOH Finish Pooh w/ 537 jts 3-1/2" WS. Shoe looks to have had fish pass thru ID. Secure Well.

3/25/25: MU BHA of 5.9" OS (w/ 4-1/2" RHW and 4.6" Mill Control), 2-7/8" IF x 3-1/2" IF X-O, LBS (4.25" x 1.94"), Jar (4.25" x 2.04"), 4) DC's (4.25" x 2.0"), Acceel (4.25" x 1.95"), 3-1/2" PH6 X 2-7/8" IF. AOL 152.85' Begin Rih w/ BHA on 3-1/2" 12.95" S-135 PH6 WS. Ran 81-jts 3-1/2". Well filled up and began to run out. Shut down and Shut in well. Monitor well. Static. Begin to Bullhead fluid. Pressure to 850 psi. Shut down pump. Holding 850. Pressure to 1000 psi. Pressure broke over and went on vacuum. pump 10 bbls with well on vacuum. Suspect bore of packer plugged w/ ?? then pump thru. Cont Rih w/ OS BHA on 3-1/2" WS. Ran 72-jts. Have 153 total in. Cont to Rih w/ OS BHA on 3-1/2" WS. Have 335-jts in. EOT at 10,518'. Pump 120 bbls 10# down csg w/ Vac Truck. Never filled well bore. Cont Rih w/ OS BHA and 3-1/2" WS. Have 399 jts in, OS at 12,492'. Secure Well.



3/26/25: RIH w/ BHA of 5.9" OS (w/ 4-1/2" RHW and 4.6" Mill Control), 2-7/8" IF x 3-1/2" IF X-O, LBS (4.25" x 1.94"), Jar (4.25" x 2.04"), 4) DC's (4.25" x 2.0"), Acceel (4.25" x 1.95"), 3-1/2" PH6 X 2-7/8" IF. AOL 152.85' on 3-1/2" PH6 Tbg. Ran 438 jts from derrick. Cont as PU jts. Cont to Rih w/ 5.9" OS BHA on 3-1/2" WS. w/ 532-jts 3-1/2" in well, RU Pwr Swivel. PU 9.5' and 6.0' tbg sub. St Wt- Up / 195k, Down 188k, Tot 400-500 ft lbs. Work tbg w/ Swivel, St Wt, up Slap down to get latched onto fish. Set 10K down. Pull 15K then 20K over 2X. Set 15K down, Rotate to 1500 ft lbs in 7 rds. Pick up. String rotating at 190K. Acts like rotate out of FA Pkr. PU 10' at 190k. Ease back down. Pick up, Pull 15K then 20K over. Jar 1 time at 20K over. Set back down w/ 15K. Rotate with 1500 ft lbs again. Pick 10' at 190K. Acts like released from FA pkr RD Pwr Swivel.

3/27/25: RU EWL. Rih w/ 1-11/16" Wt Bar and CCL. Log thru BHA. Did not see fish in overshot. Drop down and attempt to get thru Packer. Confer w/ Pat. Pooh and RD EWL. NPT on Ranger Energy. Broke a Hydraulic Hose on Winch Line. Secure Well.

3/28/25: Rih w/ 1 jt 3-1/2" WS. RU Pwr Swivel w/ 532-jts in hole. Ease down and tag TOF at 16,627.48. PU, No overpull. Work OS at Fish Top. Unable to get latched on. Discuss w/ Pat. RD Pwr Swivel. LD 5.59' and 9.60' Subs. Begin LD 3-1/2" PH6 WS. Pull 29 jts. Cont Pooh w/ 293-jts total 3-1/2" WS. (239 jts in, EOT 7552') Shut in and Secure Well.

3/29/25: Cont Pooh w/ 239 jts 3-1/2" WS and BHA. (532 total out) Break down Overshot. Marks indicate that Overshot was over fish to top sub. Grapple had some flat spots. Discuss with Pat to run LIB. Spot in to RU Ranger EWL.

3/30/25: Begin RU EWL. MU Tools. Ranger didn't have 7" x 11" Bowen Spool. Wait on Spool. Finish RU EWL w/ 7" 5K Lube. PU 5.78" LIB, Spang Jar, Centralizer, 2" 5' Wt Bars, CCL, Centralizer, Rope Socket on 9/32" E-Line. Pres Test Lube. 300 psi low, 1000 psi high. Rih. Set down on 7" LT at 11,614'. Unable to work into 7". Set down 7 times. Pooh. Indicates setting down on edge of LT. LD 5.78" LIB. MU 5-1/2" LIB, adjust centralizers. RIH. Able to Run past 7" LT down to TOF. Hit fish top at 90 fpm 1X. Pooh. Indicates a ring of 4.35" od x 4.17" OD. Looks like 4-1/2" Tbg w/ top curled on. RD Ranger EWL. Secure Well.

3/31/25: MU 5.91" OS (4-7/16" GR, 4-1/2" Mill Control, Short Cut Lip, 1' Upper Ext ) , 2-7/8" IF x 3-1/2" IF X-over, 4.25" LBS, 4.25" Jar, 4) 4.25" DC's, 4.25" Accel, 3-1/2" PH6 x 2-7/8" IF X-over. Rih w/ 3-1/2" 12.95# S-135 PH6.Tbg. Cont Rih w/ OS, Jar, and DC Bha. Cont Rih w/ OS, Jar, and DC Bha. Ran total of 399 jts in, OS at 12,492'. Shut in and Secure Well.

4/1/25: Cont. RIH w/ 532 jnt's 3 1/2 ph6. 5.91" OS (47/16" GR, 4-1/2" Mill Control, Short Cut Lip, 1' Upper Ext ) , 2-7/8" IF x 3-1/2" IF X-over, 4.25" LBS, 4.25" Jar, 4) 4.25" DC's, 4.25" Accel, 31/2" PH6 x 2-7/8" IF X-over. Up wt 182k. Down wt 174k. PU 6' - 4' -4' sub. Come down set down 4k. Pu fish is latched. Pulled 10k over. Come down set down 20k. Pu to 20k over fired jars. Repeated 5 times. Come down set down 4k. Pu fish is latched . Pulled 10k over. Come down set down 20k. Pu to 20k over fired jars. Repeated 5 times. Kept 20k pulled into fish. Come down Closed LBS. Pu to 25k over fired jars. Appears OS came free. Rotate pipe 4 rounds w/ tongs. 1100 lb's torque. Came down set dn 20k. in the same spot. PU fired jars at 8k over. Slacked down until LBS closed. PU 4k over string wt. put 4k torque w/ the tong's. OS held. Set slip's at 186k. RU swivel.

Come down Closed LBS. Rotate pipe 7 rounds w/ no wt change. PU to 6k over string wt. Torque went to 4k . Set there for 3min stalled out. WT dropped to 182k. W/ no torque.

4/2/25: Ensure tbg is PU 10' of Tag depth of 16,625. TBG tally. EOT is at 16,625' tbg tally. RIH tag at bottom of OS at 16,602' WL measurement. Tagged and pulled 4 strips to ensure tag depth and looked at ccl kick to ensure correct depth. 16,602. PU pipe 8.3' and set slips at 16,607'. TBG tally measurement. Pull two strips. From a tag depth of 16,594'. Tagged same spot at OS just 8' higher once tbg was pu 8'. OH w/ WL. RDMO WL.

4/3/25: RD swivel. TOH w/ 434 jnt's.

4/4/25: TOH w/ 3 1/2 PH6/BHA/ SA(Fish). LD BHA / (Fish) SA was missing 3 seals off of SA. Tear down OS and top sub. Was able to remove the pieces off a jet cutter that caused the obstruction in SA. Jetter cutter debris was stuck inside the SN that was pooh w/ the SA.

TIH w/ 4.74" OD SA / 3 1/2 ph6 x over. 255 jnt's

4/5/25: TIH w/ 4.74" OD SA / 3 1/2 ph6 x over. 538 jnt's Set down 25k on SA Load csg 60 bbl's/Let well set to get air out before test csg Test CSG. 1500 psi for 30min. good test. Un sting from SA. LD 3 jnt's. Secure well SDFN.

4/6/25: Check Drill Line

4/7/25: D 3 1/2 WS. 170 jnt's

4/8/25: LD 3 1/2 WS. 538 jnt's. SA looks good. All seals are intact.

4/9/25: W/O Equipment

4/10/25: Hauled off 399 jnt's of INJ string 4 1/2 221 jnt's and 183 jnt's 5 1/2 LD Fish

4/11/25: RD and raise floor. Switch to 5-1/2" Pipe Rams. NU 11" 5M Annular w/ DSA. Lower and RU floor. Set 11" x 4-1/2" BTC test hanger w/ TWC. Test Blinds 300 low / 4300 high. Good. Test Annular 300 low / 2500 high. Good. Pull 4-1/2" Hanger. Set 11" x 5-1/2" BTC test hanger w/ TWC. Test 5-1/2" Pipes 300 low / 2600 high. Good. Pull 5-1/2" test hanger.

4/12/25: Spot in and RU Butch's Csg. Spot in Support Crews. Inspect, Clean, Prep and Drift with Superior -- 4-1/2" 13.5# L-80 TK-15XT w/ TC BTC Couplings. MU Baker Seal Assy. Rih w/ 142-jts 4-1/2" Tbg with Butch's Csg Crew and Torque Turn. EOT 6025'. Secure Well.

4/13/25: Rih w/ 213-jts 4-1/2" Tbg with Butch's Csg Crew and Torque Turn. EOT 6025'. Secure Well. Have 213-jts 4-1/2" in. Cont Rih. PU 64-jts 5-1/2". Total of 277- jts in. SA at 11,872'. Secure Well.

4/14/25: Rih w/ 361-jts Tbg in. Cont Rih. Have 385 jts in. St Wt 233K. 240K up and 226K down. Torque 3700 ft lbs then broke over and rotate at 2400 to 2500 ft lbs. Ease down and latch into Baker FA Packer for Space out. Unable to get SA to Release w/ Tongs. Work St Wt 200K - 250K and Torque to 4500 ft lbs.

4/15/25: Shut down for wind

4/16/25: RU Pwr Swivel. Work Tbg String attempting to release SA from Pkr. Pump down tbg. Worked string 190K - 250K. Torque 4500 ft lbs to 6000 ft lbs. Pumped 88 bbls. Filled tbg and pres to 500 psi. Unable to get SA released from FA Pkr Fill annular w/ 42 bbls. FL at 1000'. Held solid Pres test 30 min at 1000 psi. Good. Found bad Drlg Line. Secure Well. RD Pwr Swivel.

4/17/25: Hook up to Tbg. Pump 5 bpm. Fill tbg w/ 25 bbls 300 psi. Pump 100 bbls total. 75 bbls at 350 psi

4/18/25: Monitor Well. Open Tbg - Had 1 cup of fluid trickle out. tbg Light Drips. Had 34 oz of fluid then quit. Cont Monitor Tbg. 4/19/25: Drop in and land Inj String on 5-1/2" x 11" 10K C-22 Slips. Have 70 setting on Baker FA Packer at 16,634'. Have 160K setting on Slips. Pump 100 bbls 10# Brine

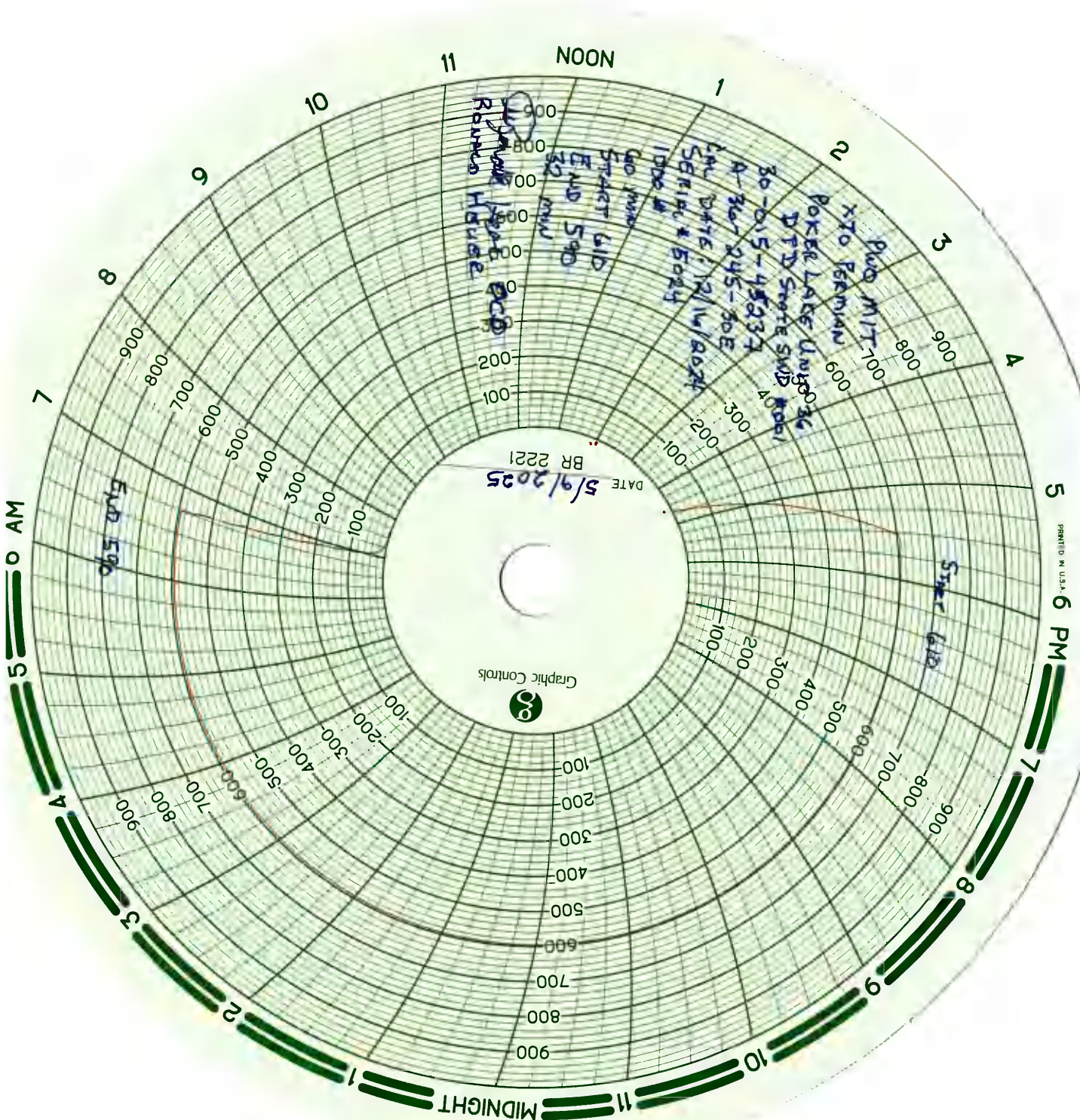
down tbg. Fill w/ 25 bbls. FL at 1000'. Well Static. Set up Sonic Cold Cut Saw. Cut 5-1/2" above Annular. LD Cut off jt. RD Floor. ND 11" 5K Annular. ND 11" 10K Bop. Original Hole Set up Sonic Cold Cut Saw. Make a Final Cut above Tbg Head. Dress and Bevel Top of 5 1/2". Install H-Plate Adapter w/BPV threads. Coat top of 5-1/2" w/ IPC Coating. NU 5-1/8" 5K x 11" 10K B-Flange and 5-1/2" 5K WH. Pres Test Void. 4000 psi for 15 min. Good. Pres Test WH. 300 low 5 min. 4500 high 15 min.

Good. Prelim Pres Test on TCA. 500 psi for 5 min. Good.

4/20/25: Hook up Sonic 1000 psi chart recorder to TCA. Pres to 500 psi for 45 min. Good Test. Bleed Off. Well Shut in and Secure. RDSU. Rack up Equipment. Load out and Move Off. Well Shut in and Secure.

5/9/25: NMOCD Ron Heuer came out to witness Post workover MIT and it Passed.







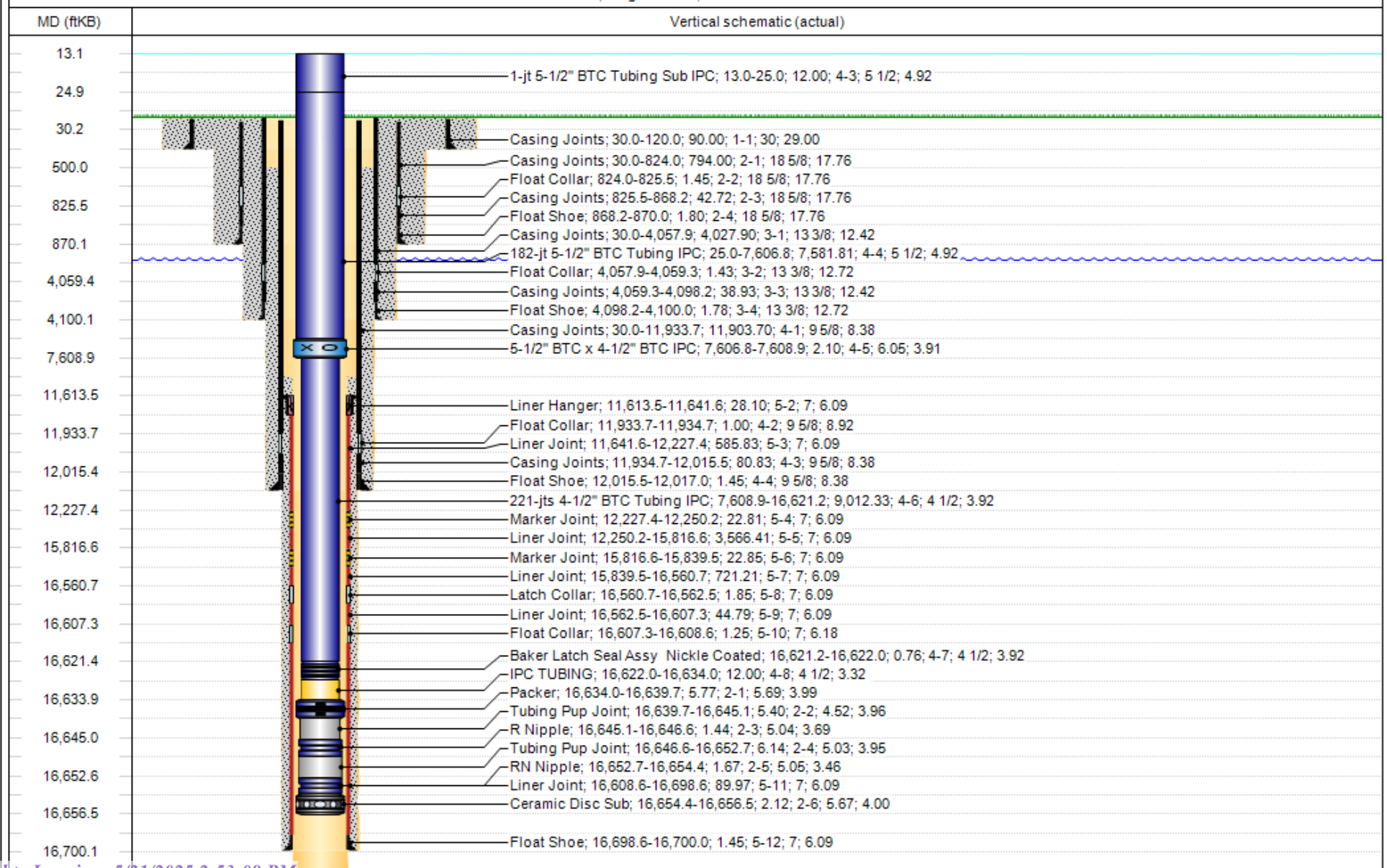
## Schematic - Drilling Directional

Well Name: Poker Lake Unit 36 DTD State SWD 001

Original Hole

API/UWI 3001545237	SAP Cost Center ID 1935341001	Permit Number NMOCD	State/Province New Mexico	County Eddy
Surface Location T24S-R30E-S36	Spud Date 11/27/2018 13:00	Original KB Elevation (ft) 3,468.00	Ground Elevation (ft) 3,438.00	KB-Ground Distance (ft) 30.00

Vertical, Original Hole, 5/14/2025 6:43:54 AM



Sante Fe Main Office  
Phone: (505) 476-3441

General Information  
Phone: (505) 629-6116

Online Phone Directory  
<https://www.emnrd.nm.gov/oed/contact-us>

State of New Mexico  
Energy, Minerals and Natural Resources  
Oil Conservation Division  
1220 S. St Francis Dr.  
Santa Fe, NM 87505

CONDITIONS

Action 465296

CONDITIONS

Operator: XTO PERMIAN OPERATING LLC. 6401 HOLIDAY HILL ROAD MIDLAND, TX 79707	OGRID: 373075
	Action Number: 465296
	Action Type: [C-103] Sub. Workover (C-103R)

CONDITIONS

Created By	Condition	Condition Date
mgebremichael	None	5/21/2025