



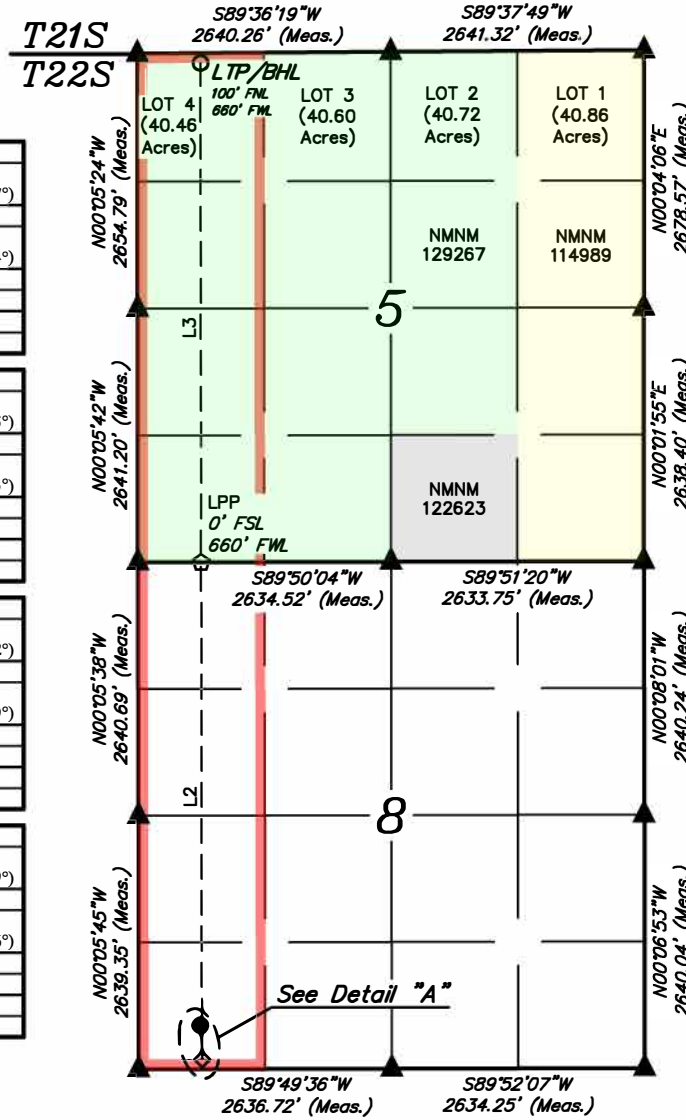
Property Name WEST GRAMA RIDGE 8-5 FEDERAL COM	Well Number 353H	Drawn By Z.L. 03-25-24	Revised By REV. 5 D.J.S. 05-13-25 (UPDATE LOT DESIGNATION)
---	---------------------	---------------------------	---

<b>NAD 83 (SURFACE HOLE LOCATION)</b>
LATITUDE = 32°24'00.81" (32.400226°)
LONGITUDE = -103°29'54.66" (-103.498517°)
<b>NAD 27 (SURFACE HOLE LOCATION)</b>
LATITUDE = 32°24'00.37" (32.400102°)
LONGITUDE = -103°29'52.92" (-103.498034°)
<b>STATE PLANE NAD 83 (N.M. EAST)</b>
N: 510339.47' E: 798994.19'
<b>STATE PLANE NAD 27 (N.M. EAST)</b>
N: 510278.77' E: 757811.51'

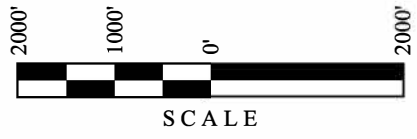
<b>NAD 83 (KOP/LP/FTP)</b>
LATITUDE = 32°23'57.29" (32.399246°)
LONGITUDE = -103°29'54.44" (-103.498455°)
<b>NAD 27 (KOP/LP/FTP)</b>
LATITUDE = 32°23'56.84" (32.399122°)
LONGITUDE = -103°29'52.70" (-103.497973°)
<b>STATE PLANE NAD 83 (N.M. EAST)</b>
N: 509983.05' E: 799016.00'
<b>STATE PLANE NAD 27 (N.M. EAST)</b>
N: 509922.36' E: 757833.31'

<b>NAD 83 (LPP)</b>
LATITUDE = 32°24'48.53" (32.413481°)
LONGITUDE = -103°29'54.32" (-103.498422°)
<b>NAD 27 (LPP)</b>
LATITUDE = 32°24'48.09" (32.413358°)
LONGITUDE = -103°29'52.58" (-103.497939°)
<b>STATE PLANE NAD 83 (N.M. EAST)</b>
N: 515162.06' E: 798985.73'
<b>STATE PLANE NAD 27 (N.M. EAST)</b>
N: 515101.22' E: 757803.15'

<b>NAD 83 (LTP/BHL)</b>
LATITUDE = 32°25'39.97" (32.427768°)
LONGITUDE = -103°29'54.20" (-103.498389°)
<b>NAD 27 (LTP/BHL)</b>
LATITUDE = 32°25'39.52" (32.427644°)
LONGITUDE = -103°29'52.46" (-103.497906°)
<b>STATE PLANE NAD 83 (N.M. EAST)</b>
N: 520359.76' E: 798955.34'
<b>STATE PLANE NAD 27 (N.M. EAST)</b>
N: 520298.76' E: 757772.86'

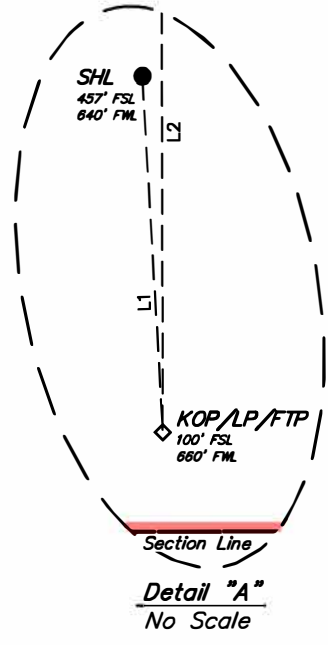


LINE TABLE		
LINE	DIRECTION	LENGTH
L1	S03°15'38"E	357.15'
L2	N00°05'37"W	5179.95'
L3	N00°05'37"W	5198.64'



- NOTE:**
- Distances referenced on plat section lines are perpendicular.
  - Basis of Bearings is a Transverse Mercator Projection with a Central Meridian of W103°53'00" (NAD 83)
  - Colored areas within section lines represent oil & gas leases.

- = SURFACE HOLE LOCATION
- ◇ = KICK OFF POINT/LANDING POINT/FIRST TAKE POINT
- ◊ = LEASE PENETRATION POINT
- = LAST TAKE POINT/BOTTOM HOLE LOCATION
- ▲ = SECTION CORNER LOCATED
- = HORIZONTAL SPACING UNIT



Sante Fe Main Office  
Phone: (505) 476-3441

General Information  
Phone: (505) 629-6116

Online Phone Directory  
<https://www.emnrd.nm.gov/ocd/contact-us>

**State of New Mexico**  
**Energy, Minerals and Natural Resources**  
**Oil Conservation Division**  
**1220 S. St Francis Dr.**  
**Santa Fe, NM 87505**

CONDITIONS

Action 471723

**CONDITIONS**

Operator: Coterra Energy Operating Co. 6001 Deauville Blvd Midland, TX 79706	OGRID: 215099
	Action Number: 471723
	Action Type: [C-102] Well Location & Acreage Plat (C-102)

**CONDITIONS**

Created By	Condition	Condition Date
matthew.gomez	None	6/6/2025