

Well Name: TURNER HUGHES

Well Location: T27N / R9W / SEC 11 /
SENE / 36.591827 / -107.751816

County or Parish/State: SAN
JUAN / NM

Well Number: 16

Type of Well: CONVENTIONAL GAS
WELL

Allottee or Tribe Name:

Lease Number: NMSF079937

Unit or CA Name:

Unit or CA Number:

US Well Number: 3004511874

Operator: HILCORP ENERGY
COMPANY

Subsequent Report

Sundry ID: 2856776

Type of Submission: Subsequent Report

Type of Action: Plug and Abandonment

Date Sundry Submitted: 06/09/2025

Time Sundry Submitted: 10:17

Date Operation Actually Began: 05/28/2025

Actual Procedure: Hilcorp Energy Company plugged and abandoned the subject well on 06/06/2025 per the attached daily reports & schematic.

SR Attachments

Actual Procedure

TURNER_HUGHES_16_SR_20250609101724.pdf

Well Name: TURNER HUGHES

Well Location: T27N / R9W / SEC 11 / SENE / 36.591827 / -107.751816

County or Parish/State: SAN JUAN / NM

Well Number: 16

Type of Well: CONVENTIONAL GAS WELL

Allottee or Tribe Name:

Lease Number: NMSF079937

Unit or CA Name:

Unit or CA Number:

US Well Number: 3004511874

Operator: HILCORP ENERGY COMPANY

Operator

I certify that the foregoing is true and correct. Title 18 U.S.C. Section 1001 and Title 43 U.S.C. Section 1212, make it a crime for any person knowingly and willfully to make to any department or agency of the United States any false, fictitious or fraudulent statements or representations as to any matter within its jurisdiction. Electronic submission of Sundry Notices through this system satisfies regulations requiring a

Operator Electronic Signature: TAMMY JONES

Signed on: JUN 09, 2025 10:17 AM

Name: HILCORP ENERGY COMPANY

Title: Regulatory Compliance Specialist

Street Address: 382 ROAD 3100

City: AZTEC

State: NM

Phone: (505) 324-5185

Email address: TAJONES@HILCORP.COM

Field

Representative Name:

Street Address:

City:

State:

Zip:

Phone:

Email address:

BLM Point of Contact

BLM POC Name: MATTHEW H KADE

BLM POC Title: Petroleum Engineer

BLM POC Phone: 5055647736

BLM POC Email Address: MKADE@BLM.GOV

Disposition: Accepted

Disposition Date: 06/13/2025

Signature: Matthew Kade

TURNER HUGHES 16**30.045.11874****PLUG AND ABANDONMENT**

5/28/2025 - RU RIG & CMNT EQUIP. CK PSI: TBG-0# CSG-100#, BH-5#, BDW 10 MINS. FT BOP. ND WH. NU BOP. RU RF & TBG EQUIP. TALLY, RABBIT & PUP. RIH W/ TS TO 6432'. EST CIRC W/ 90 BBLS FW. PUMP 120 TOTAL. NO CSG TEST. **PLUG #1 FROM 6432' - 6124' (308') (2 3/8"X4.5') M&P 24 SKS CLASS G, 15.8PPG, 1.15 YIELD, 4.9BLSRY, 2.8IX, 23.2DIS.** LD TOC NO REVERSE OUT. TOO, SIW. SDFN. **GARRICK LEE, BLM REP, ON LOCATION.**

5/29/2025 - CK PSI: TBG-0#, CSG-20#, BH-5#, BDW 5 MINS. TIH TAG TOC @ 6327'. EST CIRC W/ 3 BBLS FW. PSI TEST CSG. NO TEST. ORDERS TO SPOT 18 SKS & WOC. **PLUG #1A FROM 6327' - 6090' (237')(2 3/8"X 4.5") M&P 18 SKS CLASS G CMNT, 15.8PPG, 1.15YIELD, 3.6BLSRY, 2MIX, 23DIS.** LD TOC REVERSE OUT. TOO. SIW. WOC. TIH TAG TOC @ 6158' BLM REP APPROVED TAG. EST CIRC W/ 3 BBLS. NO CSG TEST. BH EST CIRC. LD TBG TO PLUG #2. TOO LD TS. JSA. RU DRAKE WL. RIH W/ TG. PERF @ 5592'. LD TG. TIH W/ 4.5" CR. S&R CR @ 5542'. EST RATE OF 2.0BPM @ 700# BELOW CR. **PLUG #2 FROM 5592' - 5285' (2 3/8X 4.5X 7 7/8) M&P 64 SKS 20ABOVE / 64 BELOW, CLASS G, 15.8PPG,13BLSRY, 7.6MIX, 20DIS.** LD TOC REVERSE OUT. TOO W/ 50 STANDS. SIW, SDFN. **GARRICK LEE, BLM REP, ON LOCATION.**

5/30/2025 - CK PSI: TBG-0#, CSG-10#, BH-5#, BDW 5 MINS. FINISH TOO. LD STINGER. TIH TAG TOC @ 5231'. (BLM REP APPROVED TAG) LD TBG TO PLUG #3. EST CIRC W/ 3BBLS. NO CSG TEST. **PLUG #3 FROM 4585' - 4329'. (256') (2 3/8"X4.5") M&P 20 SKS, CLASS G. 15.8PPG, 1.15YIELD, 4.0BLSRY, 2.3MIX, 16.4DIS.** LD TOC, REVERSE OUT. TOO. SIW. WOC. TIH TAG TOC @ 4361'. (BLM REP APPROVED TAG) EST CIRC W/ 2 BBLS. NO CSG TEST. LD TBG TO PLUG #4. TOO LD TS. JSA. RU DRAKE WL. RIH W/ TG . PERF @ 3694'. LD TG. TIH W/ 4.5" CR. S&R CR @ 3644'. **PLUG #4 FROM 3694' - 3388' (256')(2 3/8X4.5X7 7/8 OH)M&P 60 SKS CLASS G 20 ABOVE / 40BELOW, 15.8PPG, 1.15YIELD, 12.2BLSRY, 7.1MIX, 12.8DIS.** LD TOC REVERSE OUT. TOO W/ 30 STANDS. SIW, SDFN. **(GERRICK LEE BLM REP, ON LOCATION)**

6/2/2025 - CK PSI; TBG-0#, CSG-0#, BH-5#, BDW 1 MIN. FINISH TOO. LD STINGER. TIH TAG TOC @ 3267'. LD TBG TO PLUG 5. EST CIRC W/ 3BBLS. NO CSG TEST. TOO LD TS. JSA RU DRAKE WL. RIH W/ TG & PERF @ 3040' RD WL. TIH W/ CR. S&R CR @ 2990'. ATTEMPT CSG PSI TEST. NO TEST. EST A RATE OF 2.0BPM @ 500 PSI. (COMMUNICATION W/ CSG HOLE ABOVE). **PLUG #5 FROM 3040' - 2785' (205')(2 3/8X4.5X7 7/8'OH) M&P 60 SKS CLASS G, 16 AABOVE/ 44 BELOW, 15.8PPG, 1.15YIELD, 12.2BLSRY, 7.1MIX, 2%CAL, 10.9DIS.** LD TOC REVERSE OUT. TOO LD STINGER. TIH W/ TS TO 2000'. SIW WOC. SDFN. **(BLM REP GERRICK LEE, ON LOCATION)**

6/4/2025 - CK PSI; TBG-0#, CSG-0#, BH-0#. BDW 0 MIN. TIH TAG TOC @ 2771'. (BLM REP APPROVED TAG) LD TBG TO PLUG #6. EST CIRC W/ 3 BBLS FW. NO CSG TEST. CIRC OUT BH VALVE. **PLUG #6 FROM 2211'-1903' (308')(2 3/8X4.5"0 M&P 24 SKS CLASS G,**

TURNER HUGHES 16

30.045.11874

PLUG AND ABANDONMENT

15.8PPG, 1.15YIELD, 4.9BLSRY, 2.8MIX, 7.2DIS 2%CAL. LD TOC. NO REVERSE. LD TOO H, SIW WOC. **TIH TAG TOC @ 1940'**. LD TBG TO PLUG #7. NO CSG TEST. TOO H. **PLUG 7 WAS REVISED & APPORVED BY BLM & NMOCD.** JSA. RU DRAKE WL. RIH W/ TG & PERF @ 1720'. LD TG. RD WL. WAIT ON BAD WEATHER TO SUBSIDE. SIW & SDFN DUE TO LIGHTNING & INCLEMENT WEATHER CONDITIONS. **(GERRICK LEE BLM REP, ON LOCATION)**

6/5/2025 - CK PSI; TBG-03, CSG-0#, BH-0#. BDW 0 MIN. TIH. S&R 4.5" CR @ 1670'. NO CSG TEST. EST A RATE OF 2.0BPM @ 300#. (CIRC WAS EST @ SURF CSG BELOW CELLAR LEVEL). **PLUG #7 FROM 1720'- 1465' (255') (2 3/8X4.5X7 7/8OH) M&P 60 CLASS G, 16ABOVE/ 44BELOW, 15.8PPG, 1.15YIELD, 12.2 BLSRY, 7.1MIX. 5.5DIS, 2%CAL.** LD TOC NO REVERSE, TOO H. LD STINGER. SIW. WOC. DURING WOC DIG OUT CSG. UNABLE TO FIND CSG HOLE @ 5') **TIH TAG TOC @ 1470'**. LD TBG TO PLUG 8. NO CSG TEST. TOO H. JSA. RU DRAKE WL. RIH W/ TG & PERF @ 1278'. LD TG. RD WL. TIH W/ 4.5" CR. S&R @ 1228'. NO CSG TEST. (SURF CSG LEAK @ SURFACE) EST A RATE OF 2.0BPM @ 150# PSI. (CIRC @ SURF BELOW BH VALVE). **PLUG #8 FROM 1278' - 778' (500') (2 3/8x4.5x7 7/8) M&P 125 SKS CLASS G, 15.8, 1.15YIELD, 25.6BLSRY, 14.8 MIX, 2.9DIS.** LD TOC. NO REVERSE. TOO H LD STINGER. SIW, SDFN WOC. **(GERRICK LEE BLM REP, ON LOCATION)**

6/6/2025 - CK PSI; TBG-0#, CSG-0#, BH-0#. BDW 0 MIN. **TIH TAG TOC @ 840'**. NO CSG TEST. LD TBG TO PLUG #9. RU DRAKE WL. RIH W/ TG & PERF @ 359'. RD WL. TIH W/ 4.5 CR. S&R CR @ 309. PSI TEST CSG TO 600#. TEST OK. EST A RATE OF 2.0BPM @ 200# PSI (SAME CIRC @ SURF BELOW BH VALVE). **PLUG #9 FROM 359'-0' (2 3/8X4.5X7 7/8" OH) M&P 130 SKS CLASS G, 15.8PPG, 1.15YIELD, 26.7BLSRY, 15.4MIX, 2%CAL.** CIRC CMT TO SURF. LD ALL TBG SIW. WOC. RD RF & TBG EQUIP. ND BOP NU WH. DIG OUT WH. CUT & REMOVE WH. TOC @ 12' & 24'. WELD & INSTALL DHM @ 36.59209 N / -107.75243 W. RU PP TOP OFF DHM & CELLAR W/ 25 SKS CLASS G 15.8PPG, 1.15YIELD. RD. **RIG RELEASED @ 14:00 ON 6/6/2025. (GERRICK LEE BLM REP, ON LOCATION)**

Tammy Jones

From: Kuehling, Monica, EMNRD <monica.kuehling@emnrd.nm.gov>
Sent: Thursday, June 5, 2025 9:25 AM
To: Rennick, Kenneth G; John LaMond; Kade, Matthew H
Cc: Farmington Regulatory Techs; Clay Padgett; Lee Murphy; Oscar Sanchez - (C); Joe Zimmerman; Lucero, Virgil S; Lee, Garrick L
Subject: RE: [EXTERNAL] P&A Revision Request for Hilcorp's TURNER HUGHES 16 (API # 3004511874)

CAUTION: External sender. DO NOT open links or attachments from UNKNOWN senders.

NMOCD approves below

Thank you

Monica Kuehling
Compliance Officer Supervisor
Deputy Oil and Gas Inspector
New Mexico Oil Conservation Division
North District
Cell Phone: 505-320-0243
Email - monica.kuehling@emnrd.nm.gov

From: Rennick, Kenneth G <krennick@blm.gov>
Sent: Thursday, June 5, 2025 9:16 AM
To: John LaMond <jlamond@hilcorp.com>; Kuehling, Monica, EMNRD <monica.kuehling@emnrd.nm.gov>; Kade, Matthew H <mkade@blm.gov>
Cc: Farmington Regulatory Techs <FarmingtonRegulatoryTechs@hilcorp.com>; Clay Padgett <cpadgett@hilcorp.com>; Lee Murphy <lmurphy@hilcorp.com>; Oscar Sanchez - (C) <Oscar.Sanchez@hilcorp.com>; Joe Zimmerman <Joseph.Zimmerman@hilcorp.com>; Lucero, Virgil S <vlucero@blm.gov>; Lee, Garrick L <glee@blm.gov>
Subject: Re: [EXTERNAL] P&A Revision Request for Hilcorp's TURNER HUGHES 16 (API # 3004511874)

To confirm, the BLM finds the procedure appropriate.

Kenneth (Kenny) Rennick

Petroleum Engineer

Bureau of Land Management
Farmington Field Office
6251 College Blvd
Farmington, NM 87402

Email: krennick@blm.gov
Mobile & Text: 505.497.0019

From: John LaMond <jlamond@hilcorp.com>
Sent: Thursday, June 5, 2025 8:57 AM
To: Kuehling, Monica, EMNRD <monica.kuehling@emnrn.nm.gov>; Rennick, Kenneth G <krennick@blm.gov>; Kade, Matthew H <mkade@blm.gov>
Cc: Farmington Regulatory Techs <FarmingtonRegulatoryTechs@hilcorp.com>; Clay Padgett <cpadgett@hilcorp.com>; Lee Murphy <lmurphy@hilcorp.com>; Oscar Sanchez - (C) <Oscar.Sanchez@hilcorp.com>; Joe Zimmerman <Joseph.Zimmerman@hilcorp.com>; Lucero, Virgil S <vlucero@blm.gov>; Lee, Garrick L <glee@blm.gov>; John LaMond <jlamond@hilcorp.com>
Subject: RE: [EXTERNAL] P&A Revision Request for Hilcorp's TURNER HUGHES 16 (API # 3004511874)

Good morning Monica and Kenny,

Per our discussion, Hilcorp successfully pumped PLUG #7 as proposed below. Prior to pumping PLUG #7, Hilcorp attempted to pressure test the production casing about the CICR set @ 1,670' w/o success.

Moving forward, Hilcorp received verbal approval from the NMOCD & BLM to make the following adjustments to the procedure:

- Ahead of pumping PLUG #8 (FRD & OJO): Set a **4-1/2" CICR @ 1,228'**. Perf depth & cement volumes will remain the same as proposed & approved.
- Ahead of pumping PLUG #9 (Surf. Csg. Shoe): Pressure test against PLUG #8. If the pressure test is good, no changes will be made. If the pressure test fails, Hilcorp will set a **4-1/2" CICR @ 309'**. Perf depth & cement volumes will remain the same as proposed & approved.

Please let me know if you have any questions.

Thanks,

John LaMond

Operations Engineer – Technical Services
Hilcorp Energy Company
1111 Travis
Houston, TX 77002
346-237-2210 (Office)
832-754-9692 (Cell)
jlamond@hilcorp.com

From: Kuehling, Monica, EMNRD <monica.kuehling@emnrn.nm.gov>
Sent: Wednesday, June 4, 2025 2:11 PM
To: Rennick, Kenneth G <krennick@blm.gov>; John LaMond <jlamond@hilcorp.com>; Kade, Matthew H <mkade@blm.gov>

Cc: Farmington Regulatory Techs <FarmingtonRegulatoryTechs@hilcorp.com>; Clay Padgett <cpadgett@hilcorp.com>; Lee Murphy <lmurphy@hilcorp.com>; Oscar Sanchez - (C) <Oscar.Sanchez@hilcorp.com>; Joe Zimmerman <Joseph.Zimmerman@hilcorp.com>; Lucero, Virgil S <vlucero@blm.gov>; Lee, Garrick L <glee@blm.gov>
Subject: RE: [EXTERNAL] P&A Revision Request for Hilcorp's TURNER HUGHES 16 (API # 3004511874)

CAUTION: External sender. DO NOT open links or attachments from UNKNOWN senders.

NMOCD approves below

Thank you

Monica Kuehling
Compliance Officer Supervisor
Deputy Oil and Gas Inspector
New Mexico Oil Conservation Division
North District
Cell Phone: 505-320-0243
Email - monica.kuehling@emnrd.nm.gov

From: Rennick, Kenneth G <krennick@blm.gov>
Sent: Wednesday, June 4, 2025 12:17 PM
To: John LaMond <jlamond@hilcorp.com>; Kuehling, Monica, EMNRD <monica.kuehling@emnrd.nm.gov>; Kade, Matthew H <mkade@blm.gov>
Cc: Farmington Regulatory Techs <FarmingtonRegulatoryTechs@hilcorp.com>; Clay Padgett <cpadgett@hilcorp.com>; Lee Murphy <lmurphy@hilcorp.com>; Oscar Sanchez - (C) <Oscar.Sanchez@hilcorp.com>; Joe Zimmerman <Joseph.Zimmerman@hilcorp.com>; Lucero, Virgil S <vlucero@blm.gov>; Lee, Garrick L <glee@blm.gov>
Subject: Re: [EXTERNAL] P&A Revision Request for Hilcorp's TURNER HUGHES 16 (API # 3004511874)

To confirm, the BLM finds the procedure appropriate.

Kenneth (Kenny) Rennick

Petroleum Engineer

Bureau of Land Management
Farmington Field Office
6251 College Blvd
Farmington, NM 87402

Email: krennick@blm.gov
Mobile & Text: 505.497.0019

From: John LaMond <jlamond@hilcorp.com>
Sent: Wednesday, June 4, 2025 12:09 PM
To: Kuehling, Monica, EMNRD <monica.kuehling@emnrd.nm.gov>; Rennick, Kenneth G <krennick@blm.gov>; Kade, Matthew H <mkade@blm.gov>
Cc: Farmington Regulatory Techs <FarmingtonRegulatoryTechs@hilcorp.com>; Clay Padgett <cpadgett@hilcorp.com>; Lee Murphy <lmurphy@hilcorp.com>; Oscar Sanchez - (C) <Oscar.Sanchez@hilcorp.com>; Joe Zimmerman <Joseph.Zimmerman@hilcorp.com>; Lucero, Virgil S <vlucero@blm.gov>; Lee, Garrick L <glee@blm.gov>; John LaMond <jlamond@hilcorp.com>
Subject: RE: [EXTERNAL] P&A Revision Request for Hilcorp's TURNER HUGHES 16 (API # 3004511874)

Good afternoon Monica and Kenny,

Per our discussion on the phone, Hilcorp received verbal approval from the NMOCD & BLM to adjust PLUG #7 based on the TOC @ ~1,756' based on the CBL run 2025-02-19:

- **PLUG #7: 52sx of Class G Cement (15.8 PPG, 1.15 yield); FRD Top @ 1,751':**
 - RIH & perf 4-1/2" casing @ **1,720'** (this perf depth is above cement stringers)
 - RIH & set **4-1/2" CICR @ 1,670'** MD.
 - Pump 40sx of cement in the 4-1/2" casing X 7-7/8" open hole annulus (est. **TOC @ +/- 1,520'** & est. **BOC @ +/- 1,720'**). Pump an additional 4sx of cement beneath the 4-1/2" CICR (est. **TOC @ +/- 1,670'** & est. **BOC @ +/- 1,720'**). Sting out of retainer, pump an 8 sack balanced cement plug on top of the CICR. (est. **TOC @ +/- 1,570'** & est. **BOC @ +/- 1,670'**).
 - WOC for 4 hrs, tag TOC w/ work string. *Note cement plug lengths and volumes account for excess.
- The remainder of the P&A procedure will be executed as previously approved.

Please let me know if you have any questions.

Thanks,

John LaMond

Operations Engineer – Technical Services
 Hilcorp Energy Company
 1111 Travis
 Houston, TX 77002
 346-237-2210 (Office)
 832-754-9692 (Cell)
jlamond@hilcorp.com

From: Kuehling, Monica, EMNRD <monica.kuehling@emnrd.nm.gov>
Sent: Thursday, May 29, 2025 4:04 PM
To: Rennick, Kenneth G <krennick@blm.gov>; John LaMond <jlamond@hilcorp.com>; Kade, Matthew H <mkade@blm.gov>
Cc: Farmington Regulatory Techs <FarmingtonRegulatoryTechs@hilcorp.com>; Clay Padgett <cpadgett@hilcorp.com>; Lee Murphy <lmurphy@hilcorp.com>; Oscar Sanchez - (C) <Oscar.Sanchez@hilcorp.com>; Joe Zimmerman <Joseph.Zimmerman@hilcorp.com>; John LaMond <jlamond@hilcorp.com>; Lucero, Virgil S <vlucero@blm.gov>; Lee, Garrick L <glee@blm.gov>
Subject: RE: [EXTERNAL] P&A Revision Request for Hilcorp's TURNER HUGHES 16 (API # 3004511874)

CAUTION: External sender. DO NOT open links or attachments from UNKNOWN senders.

NMOCD approved verbally in a.m. this day May 29, 2025

Thank you

Monica Kuehling
Compliance Officer Supervisor
Deputy Oil and Gas Inspector
New Mexico Oil Conservation Division
North District
Cell Phone: 505-320-0243
Email - monica.kuehling@emnrd.nm.gov

From: Rennick, Kenneth G <krennick@blm.gov>
Sent: Thursday, May 29, 2025 8:17 AM
To: John LaMond <jlamond@hilcorp.com>; Kade, Matthew H <mkade@blm.gov>; Kuehling, Monica, EMNRD <monica.kuehling@emnrd.nm.gov>
Cc: Farmington Regulatory Techs <FarmingtonRegulatoryTechs@hilcorp.com>; Clay Padgett <cpadgett@hilcorp.com>; Lee Murphy <lmurphy@hilcorp.com>; Oscar Sanchez - (C) <Oscar.Sanchez@hilcorp.com>; Joe Zimmerman <Joseph.Zimmerman@hilcorp.com>; John LaMond <jlamond@hilcorp.com>; Lucero, Virgil S <vlucero@blm.gov>; Lee, Garrick L <glee@blm.gov>
Subject: Re: [EXTERNAL] P&A Revision Request for Hilcorp's TURNER HUGHES 16 (API # 3004511874)

To confirm, the BLM finds the proposed procedure appropriate.

Get [Outlook for iOS](#)

From: John LaMond <jlamond@hilcorp.com>
Sent: Thursday, May 29, 2025 8:00:44 AM
To: Kade, Matthew H <mkade@blm.gov>; Kuehling, Monica, EMNRD <monica.kuehling@emnrd.nm.gov>; Rennick, Kenneth G <krennick@blm.gov>
Cc: Farmington Regulatory Techs <FarmingtonRegulatoryTechs@hilcorp.com>; Clay Padgett <cpadgett@hilcorp.com>; Lee Murphy <lmurphy@hilcorp.com>; Oscar Sanchez - (C) <Oscar.Sanchez@hilcorp.com>; Joe Zimmerman <Joseph.Zimmerman@hilcorp.com>; John LaMond <jlamond@hilcorp.com>
Subject: [EXTERNAL] P&A Revision Request for Hilcorp's TURNER HUGHES 16 (API # 3004511874)

This email has been received from outside of DOI - Use caution before clicking on links, opening attachments, or responding.

Good morning Monica & Kenny,

Hilcorp has moved onto the TURNER HUGHES 16 (API # 3004511874) to commence P&A work.

I have attached the approved P&A NOI, as well as the CBL and an updated procedure based on the COAs in the approved NOI.

Per our discussion, Hilcorp TIH to 6,432' (tagged the CIBP at that depth), and pumped PLUG #1. After WOC, Hilcorp RIH & tagged low @ 6,327' MD.

Moving forward, Hilcorp received verbal approval from the NMOCD & BLM for the following adjustments:

- **PLUG #1a: 18sx of Class G Cement (15.8 PPG, 1.15 yield); DK Perfs @ 6,478' | DK Top @ 6,477' | GRN Top @ 6,313':**
 - TIH w/ work string & tag TOC @ 6,327' MD.
 - Pump an 18 sack balanced cement plug inside the 4-1/2" casing (est. **TOC @ +/- 6,100'** & est. **BOC @ +/- 6,327'**).
 - WOC & Tag
- The remainder of the P&A procedure will be executed as previously approved.

Please let me know if you have any questions.

Thanks,

John LaMond

Operations Engineer – Technical Services
Hilcorp Energy Company
1111 Travis
Houston, TX 77002
346-237-2210 (Office)
832-754-9692 (Cell)
jlamond@hilcorp.com

The information contained in this email message is confidential and may be legally privileged and is intended only for the use of the individual or entity named above. If you are not an intended recipient or if you have received this message in error, you are hereby notified that any dissemination, distribution, or copy of this email is strictly prohibited. If you have received this email in error, please immediately notify us by return email or telephone if the sender's phone number is listed above, then promptly and permanently delete this message.

While all reasonable care has been taken to avoid the transmission of viruses, it is the responsibility of the recipient to ensure that the onward transmission, opening, or use of this message and any attachments will not adversely affect its systems or data. No responsibility is accepted by the company in this regard and the recipient should carry out such virus and other checks as it considers appropriate.

The information contained in this email message is confidential and may be legally privileged and is intended only for the use of the individual or entity named above. If you are not an intended recipient or if you have received this message in error, you are hereby notified that any dissemination, distribution, or copy of this email is strictly prohibited. If you have received this email in error, please immediately notify us by return email or telephone if the sender's phone number is listed above, then promptly and permanently delete this message.

While all reasonable care has been taken to avoid the transmission of viruses, it is the responsibility of the recipient to ensure that the onward transmission, opening, or use of this message and any attachments will not adversely affect its systems or data. No responsibility is accepted by the company in this regard and the recipient should carry out such virus and other checks as it considers appropriate.



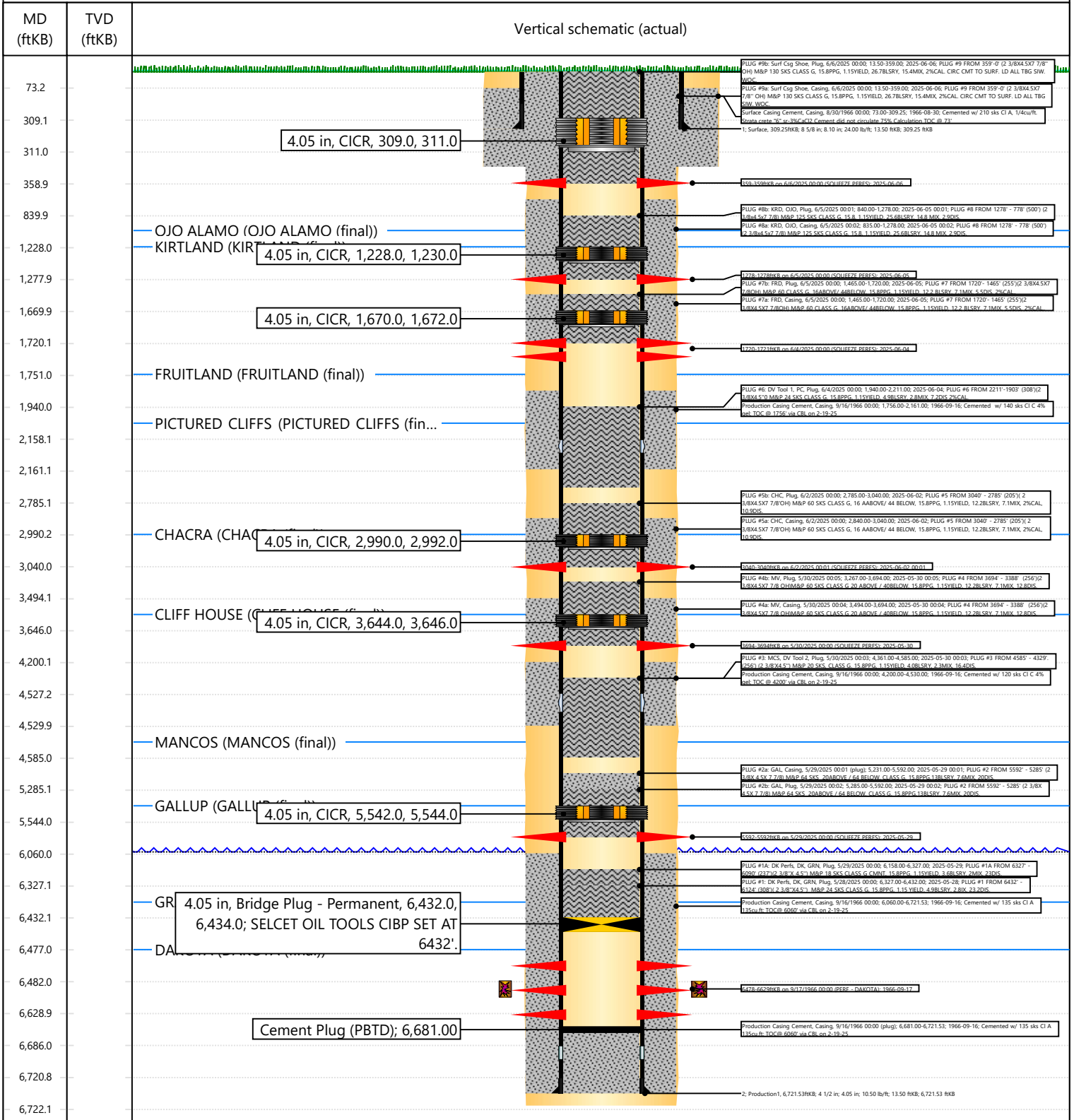
Current Schematic - Version 3

Well Name: **TURNER HUGHES #16**

API / UWI 3004511874	Surface Legal Location 011-027N-009W-H	Field Name BASIN DAKOTA (PRORATED GAS)	Route 0809	State/Province NEW MEXICO	Well Configuration Type
Ground Elevation (ft) 6,008.00	Original KB/RT Elevation (ft) 6,021.50	Tubing Hanger Elevation (ft)	RKB to GL (ft) 13.50	KB-Casing Flange Distance (ft)	KB-Tubing Hanger Distance (ft)

Tubing Strings					
Run Date 9/18/1966 00:00	Set Depth (ftKB) 6,625.49	String Max Nominal OD (in) 2 3/8	String Min Nominal ID (in) 2.00	Weight/Length (lb/ft) 4.70	Original Spud Date 8/30/1966 00:00

Original Hole, TURNER HUGHES 16



Sante Fe Main Office
Phone: (505) 476-3441

General Information
Phone: (505) 629-6116

Online Phone Directory
<https://www.emnrd.nm.gov/ocd/contact-us>

State of New Mexico
Energy, Minerals and Natural Resources
Oil Conservation Division
1220 S. St Francis Dr.
Santa Fe, NM 87505

CONDITIONS

Action 473873

CONDITIONS

Operator: HILCORP ENERGY COMPANY 1111 Travis Street Houston, TX 77002	OGRID: 372171
	Action Number: 473873
	Action Type: [C-103] Sub. Plugging (C-103P)

CONDITIONS

Created By	Condition	Condition Date
loren.diede	None	6/17/2025