

Well Name: HUERFANO UNIT	Well Location: T26N / R9W / SEC 6 / SWSW / 36.512497 / -107.835129	County or Parish/State: SAN JUAN / NM
Well Number: 156E	Type of Well: CONVENTIONAL GAS WELL	Allottee or Tribe Name:
Lease Number: NMNM03017	Unit or CA Name: HUERFANO UNIT--DK	Unit or CA Number: NMNM78395C
US Well Number: 3004526391	Operator: HILCORP ENERGY COMPANY	

Subsequent Report

Sundry ID: 2860503

Type of Submission: Subsequent Report	Type of Action: Plug and Abandonment
Date Sundry Submitted: 06/27/2025	Time Sundry Submitted: 11:49
Date Operation Actually Began: 06/19/2025	

Actual Procedure: Hilcorp Energy Company plugged and abandoned the subject well on 06/25/2025 per the attached daily reports & schematic.

SR Attachments

Actual Procedure

HILCORP_HUERFANO_UNIT__156E_20250627114859.pdf

Huerfano_Unit_156E_P_A_SR_20250627114618.pdf

Well Name: HUERFANO UNIT	Well Location: T26N / R9W / SEC 6 / SWSW / 36.512497 / -107.835129	County or Parish/State: SAN JUAN / NM
Well Number: 156E	Type of Well: CONVENTIONAL GAS WELL	Allottee or Tribe Name:
Lease Number: NMNM03017	Unit or CA Name: HUERFANO UNIT--DK	Unit or CA Number: NMNM78395C
US Well Number: 3004526391	Operator: HILCORP ENERGY COMPANY	

Operator

I certify that the foregoing is true and correct. Title 18 U.S.C. Section 1001 and Title 43 U.S.C. Section 1212, make it a crime for any person knowingly and willfully to make to any department or agency of the United States any false, fictitious or fraudulent statements or representations as to any matter within its jurisdiction. Electronic submission of Sundry Notices through this system satisfies regulations requiring a

Operator Electronic Signature: TAMMY JONES	Signed on: JUN 27, 2025 11:49 AM
Name: HILCORP ENERGY COMPANY	
Title: Regulatory Compliance Specialist	
Street Address: 382 ROAD 3100	
City: AZTEC	State: NM
Phone: (505) 324-5185	
Email address: TAJONES@HILCORP.COM	

Field

Representative Name:		
Street Address:		
City:	State:	Zip:
Phone:		
Email address:		

BLM Point of Contact

BLM POC Name: MATTHEW H KADE	BLM POC Title: Petroleum Engineer
BLM POC Phone: 5055647736	BLM POC Email Address: MKADE@BLM.GOV
Disposition: Accepted	Disposition Date: 06/30/2025
Signature: Matthew Kade	

HUERFANO UNIT 156E

30.045.26391

PLUG & ABANDON

6/19/2025 – MIRU. CK PSI: TBG-20#, CSG-10#, BH-5#. BDW 5MINS. FT BOP. WORK DOG PINS FREE. ND WH. NU BOP. RU RF & TBG EQUIP. WORK TBG HANGER FREE. TBG SHOWED SIGNS OF BEING STUCK. DRAG TBG 10 JTS UP HOLE. SHOWING STRING WEIGHT OF 51K. LD 221 JTS 2 3/8" J55 TBG (TBG IN DECENT SHAPE. BAD THREADS). SWAP FLOATS. TALLY, RABBIT & PUP. RIH W/ 4.5" SM TO 6727'. TOOHD LD SM. TIH W/ 4.5" CR TO 3150' SIW, SDFN.

6/20/2025 – CK PSI: TBG-0#, CSG-0#, BH-0# BDW 0 MINS. CNT TIH W/ 4.5" CR. **S&R CR @ 6127'**. EST CIRC W/ 10 BBLS FW. PUMP 105 TOTAL. ATTEMPT PSI TEST. NO CSG TEST. TOOHD LD STINGER. JSA. RU DRAKE WL. RIH W/ CBL TOOL. LOG WELL FROM 6721' - SURF. RD WL. TIH W/ TS TO CR. **PLUG #1 FROM 6721' - 6490' (231')(2 3/8X4.50 M&P 18 SKS CLASS G, 15.8PPG, 1.15 YIELD, 3.6BLSRY, 2.1MIX, 24.6DIS. LD TOC. NO REVERSE. TOOHD, SIW, WOC WKND, SDFN. (BILL DIERS BLM REP)**

6/23/2025 – CK PSI; TBG-0#, CSG-0#, BH-0#. BDW 0 MINS. **TIH TAG TOC @ 6513'**. LD TBG TO PLUG #2. NO CSG TEST. WAIT ON ORDERS. ORDERS TO SPOT 14 SKS & WOC. THEN PERF. **PLUG #2 FROM 5835' - 5656'. (179')(2 3/8X4.5) M&P 14 SKS CLASS G, 15.8PPG, 1.15YIELD, 2.6BLSRY, 21.4DIS. 1.6MIX, 1%CAL. LD TOC. NO REVERSE. TOOHD SIW. WOC. TIH TAG TOC @ 5693'**. LD TBG TO PLUG #3. NO CSG TEST. TOOHD LD TS. JSA. RU DRAKE WL. RIH W/ TG & PERF @ 5530'. EST A RATE OF 2.0BPM @ 500#. RD. WL. TIH W/ TS TO 5580'. **PLUG #3 FROM 5530' - 5352' M&P 52 SKS, 15.8PPG, 1.15YIELD, 11BLSRY, 6.4MIX, 20DIS, LD TOC, REVERSE OUT. SQUEEZE 7.5 BBLS. EST TOC @ 5400'. SIW, SDFN. (BILL DIERS BLM REP)**

6/24/2025 – CK PSI: TBG-0#, CSG-0#, BH-0#, BDW 0 MINS. **TIH TAG TOC @ 4840'**. NO CSG TEST. WAIT ON ORDERS & APPROVALS. **TOC WAS APPROVED BY BLM & NMOCD REPS. (THIS MADE PLUGS 3 & 4 A COMBINED PLUG)**. ORDERS TO PROCEED & PERF @ 3900'. LD TBG TO 3950'. TOOHD LD TS. CHECK RATE OF CSG LEAK. 2BPM @ 500#. JSA. RU WL. RIH W/ TG & PERF @ 3900'. RD WL. EST SAME RATE AFTER PERFS. TIH W/ TS TO 3950'. **PLUG #5 FROM 3950' - 3745' (205')(2 3/8"x 4.5) M&P 16 SKS CLASS G, 15.8PPG, 1.15, YIELD, 3.2BLSRY, 1.9MIX. 14.2DIS. 2%CAL, LD TOC. NO REVERSE. TOOHD. SIW, WOC. TIH TAG TOC @ 3800'**. BLM REP DID NOT APPROVE TAG DUE TO FORMATION TOP DIFFERENCE. PSI TEST CSG TO 600# FOR 30 MINS. TEST OK. **PLUG # 5A FROM 3800' - 3672'. M&P 10 SKS CLASS G , 15.8PPG, ,1.15YIELD, 2.0BLSRY, 1.19MIX. 13.9DIS, LD TOC. NO REVERSE. TOOHD LD TS. RU DRAKE WL RIH W/ TG & PERF @ 3238'. EST A RATE OF 1.6 BPM @ 500# PSI. RD WL. TIH W/ TS TO 3299'. PLUG # 6 FROM 3299' - 2529'. (770')(2 3/8X4.5X7 7/8) M&P 60 SKS 44 SKS OUT / 16 SKS INSIDE, CLASS G , 15.8PPG, ,1.15YIELD, 12.2BLSRY, 7.1MIX. 9.6DIS. LD TOC. TOOHD NO REVERSE. SQUEEZE 9 BBLS. EST TOC 3100'. SIW, SDFN. (BILL DIERS BLM REP)**

6/25/2025 – CK PSI: TBG-0#, CSG-0#, BH-0#. BDW 0 MINS. **TIH TAG TOC @ 3026'. (BLM REP APPROVED TAG)** LD TBG TO NEXT PLUG. **PLUG #7 FROM 2549' - 1843'. (2 3/8X4.5) M&P 55 SKS OF CLASS G, 15.8PPG, 1.15YIELD, 11.2BLSRY, 6.5MIX, 7DIS. LD TOC, NO REVERSE. LD TBG TO PLUG #8. PLUG #8 FROM 1560' - 1214' (2 3/8X4.5) M&P 27 SKS CLASS G, 15.8PPG, 1.15YIELD, 5.5BLSRY, 3.2MIX, 4.6DIS. LD TOC. NO REVERSE. TOOHD. LD TBG TO SURFACE PLUG. RU DRAKE WL. RIH W/ TG & PERF @ 275' EST CIRC OUT BH VALVE. PUMP 20 BBLS. RD WL. TIH OED TO 296'. **PLUG #9 FROM 296' - 0'. M&P 118 SKS CLASS G, 15.8PPG, 1.15YIELD, 24.1BLSRY, 14MIX. 2%CAL. CIRC CMNT TO SURF. LD ALL TBG. SIW. WOC. RD RF & TBG EQUIP. ND BOP, NU WH. DIG OUT WH. CUT & REMOVE WH. FIND TOC @ 3' INSIDE / 22' OUTSIDE. WELD & INSTALL DHM @****

HUERFANO UNIT 156E

30.045.26391

PLUG & ABANDON

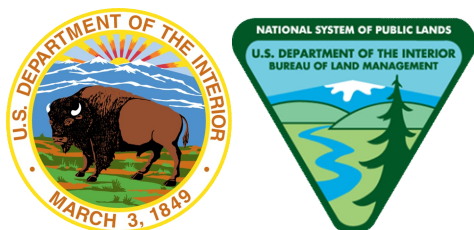
36.51232 N / 107.83611 W. TOP OFF CELLAR W/ 21 SKS CLASS G 15.8PPG, 1.15YIELD. RD. **RIG
RELEASED @ 17:00 ON 06/25/2025 (BILL DIERS BLM REP)**

From: Kade, Matthew H <mkade@blm.gov>
Sent: Tuesday, June 24, 2025 9:13 AM
To: Joe Zimmerman; Rennick, Kenneth G; john.durham@emnrd.nm.gov
Cc: Farmington Regulatory Techs; Clay Padgett; Lee Murphy; John LaMond; Oscar Sanchez - (C); Diers, William B
Subject: Re: [EXTERNAL] P&A Revision Based on COA's: HUERFANO UNIT 156E (API:3004526391)

CAUTION: External sender. DO NOT open links or attachments from UNKNOWN senders.

The BLM approves of proposed changes to procedure

Regards,
Matthew Kade
Petroleum Engineer | Bureau of Land Management
Farmington Field Office | 6251 College Blvd., Suite A / Farmington, NM 87402
Office: 505-564-7736



From: Joe Zimmerman <Joseph.Zimmerman@hilcorp.com>
Sent: Tuesday, June 24, 2025 9:02 AM
To: Kade, Matthew H <mkade@blm.gov>; Rennick, Kenneth G <krennick@blm.gov>; john.durham@emnrd.nm.gov <john.durham@emnrd.nm.gov>
Cc: Farmington Regulatory Techs <FarmingtonRegulatoryTechs@hilcorp.com>; Clay Padgett <cpadgett@hilcorp.com>; Lee Murphy <lmurphy@hilcorp.com>; John LaMond <jlamond@hilcorp.com>; Oscar Sanchez - (C) <Oscar.Sanchez@hilcorp.com>; Diers, William B <WDiers@blm.gov>
Subject: RE: [EXTERNAL] P&A Revision Based on COA's: HUERFANO UNIT 156E (API:3004526391)

Matthew/John,

As discussed, for plug 5 (MV), we will now perf slightly higher at 3,900'. We will get an injection test before and after perforating. If the injection doesn't change, we will drop tubing down to 3,950' and pump and inside plug to 3,784 (100' above MV). If we can get injection into the perf than we will set a CICR and pump the inside/outside plug as planned.

Thanks,

- Joe Z.

From: Kade, Matthew H <mkade@blm.gov>
Sent: Monday, June 23, 2025 3:10 PM
To: Joe Zimmerman <Joseph.Zimmerman@hilcorp.com>; Rennick, Kenneth G <krennick@blm.gov>; john.durham@emnrd.nm.gov
Cc: Farmington Regulatory Techs <FarmingtonRegulatoryTechs@hilcorp.com>; Clay Padgett <cpadgett@hilcorp.com>; Lee Murphy <lmurphy@hilcorp.com>; John LaMond <jlamond@hilcorp.com>; Oscar Sanchez - (C) <Oscar.Sanchez@hilcorp.com>; Diers, William B <WDiers@blm.gov>
Subject: Re: [EXTERNAL] P&A Revision Based on COA's: HUERFANO UNIT 156E (API:3004526391)

CAUTION: External sender. DO NOT open links or attachments from UNKNOWN senders.

Good afternoon,

The BLM approves of the updates to the procedure.

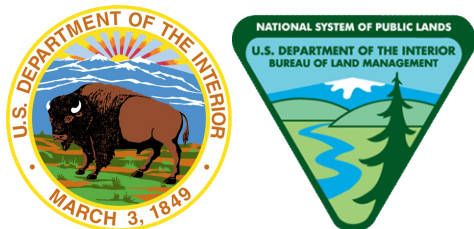
Thanks,

Matthew Kade

Petroleum Engineer | Bureau of Land Management

Farmington Field Office | 6251 College Blvd., Suite A / Farmington, NM 87402

Office: 505-564-7736



From: Joe Zimmerman <Joseph.Zimmerman@hilcorp.com>
Sent: Monday, June 23, 2025 1:50 PM
To: Kade, Matthew H <mkade@blm.gov>; Rennick, Kenneth G <krennick@blm.gov>; john.durham@emnrd.nm.gov
<john.durham@emnrd.nm.gov>
Cc: Farmington Regulatory Techs <FarmingtonRegulatoryTechs@hilcorp.com>; Clay Padgett <cpadgett@hilcorp.com>; Lee Murphy <lmurphy@hilcorp.com>; John LaMond <jlamond@hilcorp.com>; Oscar Sanchez - (C) <Oscar.Sanchez@hilcorp.com>
Subject: RE: [EXTERNAL] P&A Revision Based on COA's: HUERFANO UNIT 156E (API:3004526391)

Matthew & John,

Based on our earlier conversation, the following changes were made to the procedure based on the CBL results. See attached updated procedure for detail.

- Plug 2 will be split out into separate Gallup and El Vado plugs, and the El Vado plug will be changed to an inside/outside plug.
- Plug 4 will be split out into separate MV and Chacra plugs, and they will both be changed to inside/outside plugs.

Let me know if there are any questions/concerns.

Thank you,

- Joe Z.

From: Kuehling, Monica, EMNRD <monica.kuehling@emnrd.nm.gov>

Sent: Friday, April 11, 2025 3:59 PM

To: Kade, Matthew H <mkade@blm.gov>; Joe Zimmerman <Joseph.Zimmerman@hilcorp.com>; Rennick, Kenneth G <krennick@blm.gov>

Cc: Farmington Regulatory Techs <FarmingtonRegulatoryTechs@hilcorp.com>; Clay Padgett <cpadgett@hilcorp.com>; Lee Murphy <lmurphy@hilcorp.com>; John LaMond <jlamond@hilcorp.com>; Oscar Sanchez - (C) <Oscar.Sanchez@hilcorp.com>

Subject: RE: [EXTERNAL] P&A Revision Based on COA's: HUERFANO UNIT 156E (API:3004526391)

CAUTION: External sender. DO NOT open links or attachments from UNKNOWN senders.

NMOCD approves revisions

Thank you

Monica Kuehling
Compliance Officer Supervisor
Deputy Oil and Gas Inspector
New Mexico Oil Conservation Division
North District
Cell Phone: 505-320-0243
Email - monica.kuehling@emnrd.nm.gov

From: Kade, Matthew H <mkade@blm.gov>

Sent: Friday, April 11, 2025 11:38 AM

To: Joe Zimmerman <Joseph.Zimmerman@hilcorp.com>; Rennick, Kenneth G <krennick@blm.gov>; Kuehling, Monica, EMNRD <monica.kuehling@emnrd.nm.gov>

Cc: Farmington Regulatory Techs <FarmingtonRegulatoryTechs@hilcorp.com>; Clay Padgett <cpadgett@hilcorp.com>; Lee Murphy <lmurphy@hilcorp.com>; John LaMond <jlamond@hilcorp.com>; Oscar Sanchez - (C) <Oscar.Sanchez@hilcorp.com>

Subject: Re: [EXTERNAL] P&A Revision Based on COA's: HUERFANO UNIT 156E (API:3004526391)

The BLM approves of the changes to procedure

Matthew Kade

Petroleum Engineer | Bureau of Land Management

Farmington Field Office | 6251 College Blvd., Suite A / Farmington, NM 87402

Office: 505-564-7736



From: Joe Zimmerman <Joseph.Zimmerman@hilcorp.com>
Sent: Friday, April 11, 2025 10:38 AM
To: Rennick, Kenneth G <krennick@blm.gov>; Kade, Matthew H <mkade@blm.gov>; Kuehling, Monica, EMNRD <monica.kuehling@emnrn.nm.gov>
Cc: Farmington Regulatory Techs <FarmingtonRegulatoryTechs@hilcorp.com>; Clay Padgett <cpadgett@hilcorp.com>; Lee Murphy <lmurphy@hilcorp.com>; John LaMond <jlamond@hilcorp.com>; Oscar Sanchez - (C) <Oscar.Sanchez@hilcorp.com>; Joe Zimmerman <Joseph.Zimmerman@hilcorp.com>
Subject: [EXTERNAL] P&A Revision Based on COA's: HUERFANO UNIT 156E (API:3004526391)

This email has been received from outside of DOI - Use caution before clicking on links, opening attachments, or responding.

Good morning,

Attached is the revised procedure for the **HUERFANO UNIT 156E (API:3004526391)** updated to account for the BLM and NMOCD COA's.

Please let me know if anyone has any questions or concerns.

Thank you,

Joe Zimmerman
Hilcorp Energy Company
Operations Engineer – Technical Services
Joseph.zimmerman@hilcorp.com
C: 208.610.8631
O: 346.237.2054

The information contained in this email message is confidential and may be legally privileged and is intended only for the use of the individual or entity named above. If you are not an intended recipient or if you have received this message in error, you are hereby notified that any dissemination, distribution, or copy of this email is strictly prohibited. If you have received this email in error, please immediately notify us by return email or telephone if the sender's phone number is listed above, then promptly and permanently delete this message.

While all reasonable care has been taken to avoid the transmission of viruses, it is the responsibility of the recipient to ensure that the onward transmission, opening, or use of this message and any attachments will not adversely affect its systems or data. No responsibility is accepted by the company in this regard and the recipient should carry out such virus and other checks as it considers appropriate.

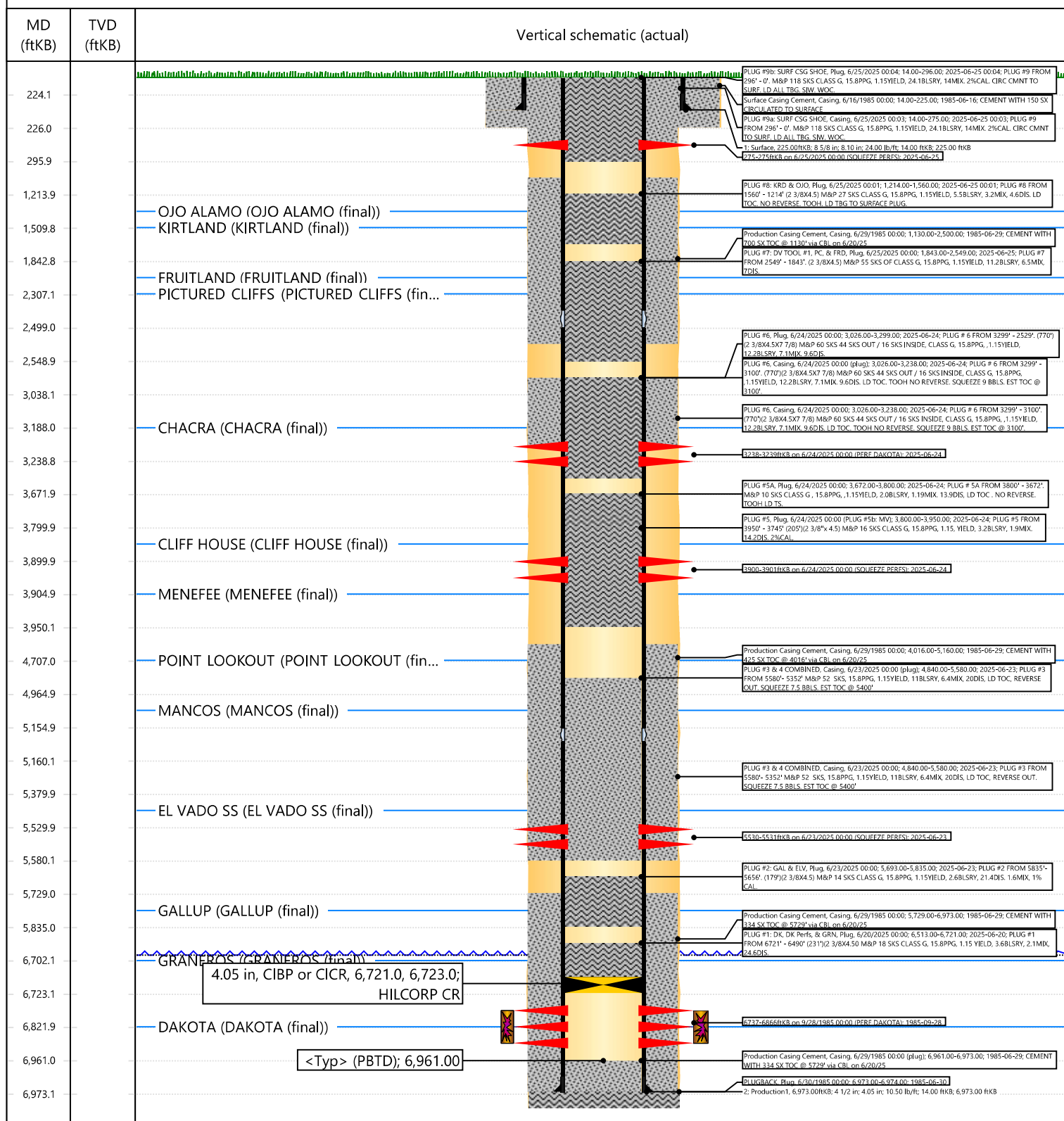


Current Schematic - Version 3

Well Name: HUERFANO UNIT #156E

API / UWI 3004526391	Surface Legal Location 006-026N-009W-M	Field Name BASIN DAKOTA (PRORATED GAS)	Route 0607	State/Province NEW MEXICO	Well Configuration Type VERTICAL
Ground Elevation (ft) 6,615.00	Original KB/RT Elevation (ft) 6,629.00	Tubing Hanger Elevation (ft)	RKB to GL (ft) 14.00	KB-Casing Flange Distance (ft)	KB-Tubing Hanger Distance (ft)
Tubing Strings					
Run Date 7/14/2006 00:00	Set Depth (ftKB) 6,863.52	String Max Nominal OD (in) 2 3/8	String Min Nominal ID (in) 2.00	Weight/Length (lb/ft) 4.70	Original Spud Date 6/16/1985 00:00

Original Hole, 30045263910000 [VERTICAL]



Sante Fe Main Office
Phone: (505) 476-3441

General Information
Phone: (505) 629-6116

Online Phone Directory
<https://www.emnrd.nm.gov/oed/contact-us>

State of New Mexico
Energy, Minerals and Natural Resources
Oil Conservation Division
1220 S. St Francis Dr.
Santa Fe, NM 87505

CONDITIONS

Action 480098

CONDITIONS

Operator: HILCORP ENERGY COMPANY 1111 Travis Street Houston, TX 77002	OGRID: 372171
	Action Number: 480098
	Action Type: [C-103] Sub. Plugging (C-103P)

CONDITIONS

Created By	Condition	Condition Date
loren.diede	None	7/2/2025