

Office  
 District I – (575) 393-6161  
 1625 N. French Dr., Hobbs, NM 88240  
 District II – (575) 748-1283  
 811 S. First St., Artesia, NM 88210  
 District III – (505) 334-6178  
 1000 Rio Brazos Rd., Aztec, NM 87410  
 District IV – (505) 476-3460  
 1220 S. St. Francis Dr., Santa Fe, NM  
 87505

State of New Mexico  
 Energy, Minerals and Natural Resources

Form C-103  
 Revised July 18, 2013

OIL CONSERVATION DIVISION  
 1220 South St. Francis Dr.  
 Santa Fe, NM 87505

WELL API NO. 30-015-31085
5. Indicate Type of Lease STATE <input checked="" type="checkbox"/> FEE <input type="checkbox"/>
6. State Oil & Gas Lease No.
7. Lease Name or Unit Agreement Name Poker Lake Unit
8. Well Number 148
9. OGRID Number 373075
10. Pool name or Wildcat Purple Sage; Wolfcamp

SUNDRY NOTICES AND REPORTS ON WELLS (DO NOT USE THIS FORM FOR PROPOSALS TO DRILL OR TO DEEPEN OR PLUG BACK TO A DIFFERENT RESERVOIR. USE "APPLICATION FOR PERMIT" (FORM C-101) FOR SUCH PROPOSALS.)	
1. Type of Well: Oil Well <input type="checkbox"/> Gas Well <input type="checkbox"/> Other <input type="checkbox"/>	
2. Name of Operator XTO Permian Operating LLC.	
3. Address of Operator 6401 Holliday Hill Rd. Bldg 5, Midland, TX 79707	
4. Well Location Unit Letter H : 1650 feet from the North line and 660 feet from the East line Section 32 Township 24S Range 31E NMPM County Eddy	
11. Elevation (Show whether DR, RKB, RT, GR, etc.)	

12. Check Appropriate Box to Indicate Nature of Notice, Report or Other Data

NOTICE OF INTENTION TO:		SUBSEQUENT REPORT OF:	
PERFORM REMEDIAL WORK <input type="checkbox"/>	PLUG AND ABANDON <input type="checkbox"/>	REMEDIAL WORK <input type="checkbox"/>	ALTERING CASING <input type="checkbox"/>
TEMPORARILY ABANDON <input type="checkbox"/>	CHANGE PLANS <input type="checkbox"/>	COMMENCE DRILLING OPNS. <input type="checkbox"/>	P AND A <input checked="" type="checkbox"/>
PULL OR ALTER CASING <input type="checkbox"/>	MULTIPLE COMPL <input type="checkbox"/>	CASING/CEMENT JOB <input type="checkbox"/>	
DOWNHOLE COMMINGLE <input type="checkbox"/>			
CLOSED-LOOP SYSTEM <input type="checkbox"/>			
OTHER: <input type="checkbox"/>		OTHER: <input type="checkbox"/>	

13. Describe proposed or completed operations. (Clearly state all pertinent details, and give pertinent dates, including estimated date of starting any proposed work). SEE RULE 19.15.7.14 NMAC. For Multiple Completions: Attach wellbore diagram of proposed completion or recompletion.

**WELL RECORD CLEANUP - CORRECTION TO P&A SUMMARY**

XTO Permian Operating LLC has P&A'd the above mentioned well per the attached summary report and WBD. The CBL has been submitted separately.

In the subsequent P&A sundry previously submitted the wrong P&A summary was attached, please see the correct summary for the above mentioned well.

Spud Date:

04/28/2001

Rig Release Date:

I hereby certify that the information above is true and complete to the best of my knowledge and belief.

SIGNATURE Sherry Morrow TITLE Regulatory Analyst DATE 6/10/2025

Type or print name Sherry Morrow E-mail address: sherry.morrow@exxonmobil.com PHONE: 432-967-7046

**For State Use Only**

APPROVED BY: \_\_\_\_\_ TITLE \_\_\_\_\_ DATE \_\_\_\_\_

Conditions of Approval (if any):

Poker Lake Unit 148  
API Number 3001531085  
P&A Summary Report

2/5/24: Round trip equipment from the JRU 85. Spot equipment. RU aux equip. PU could not be RU due to base beam not arriving.

2/6/24: Spot base beam. Had crew dig out cellar to find intermediates and surface csg valves. Bleed down csg from 1500 psi to 300 psi. Bleed down intermediate II from 1400 psi to 0 psi. MIRU hydrovac to clear cellar. RU PU. BD csg from 900 psi to 250 psi.

2/7/24: cg from 50 psi to 0, SIICP 2 from 200 psi to 0 and tbg from 1100 psi to 350 psi. BH 85 bbls 10# brine down tbg @ 1.5 bpm. Secured well. Verified well secure. SDFN

2/8/24: BD csg from 50 psi to 0, intermediate 2 from 110 psi to 0 and tbg from 350 psi to 0. Pump 100 bbls 10# brine down tbg @ 2 bpm. ND tree. Lock pins are ceased. New one are being sent from Sonic yard. NU BOP. Waiting on pins to arrive from Sonic yard. Rig crew did routine maintenance on PU. Brigade mechanic came out to inspect brakes, disc assist and COFO. We were able to remove a pin and try to run new pin in, but it did not fit. Pumped 85 bbls 10# brine down tbg @ 1.5 bpm. Secured well. Verified well secure. SDFN.

2/9/24: Work pins and gland nuts on WH. Got pins to come out and go back in. NU BOP. Worked tbg to try and get wrap around out. Loaded hole down backside to be able to put pressure on bottom of wrap around to attempt to get it to release. Worked tbg and finally got wrap around to come out. PT BOP. Pipe rams tested to 3500 psi high and 250 psi low for five minutes. PT good and charted. PT Blinds to 3500 psi high and 250 psi low for five minutes. PT good and charted. Secured well. Verified well secure. SDFWE.

2/12/24: Attempt to unset pkr. No success. NMOCD approved to cut tbg above pkr.

2/13/24: BD intermediate 2 from 250 psi to 0. All other at 0. MIRU WLU. RIH w/2.125 GR/JB. Tagged @ 11,365'. POOH. RIH w/1-7/16 weight bar and CCL. Tagged @ 11,365'. Pumped 81 bbls 10# brine down tbg @ 1.5 bpm. Caught 500 psi @ 47 bbls pumped (~8100') and steadily climbed up to 1000 psi. SD and psi dropped to 0. Tbg went on vacuum. RDMO WLU. Housekeeping. Secured well. Verified well secure. SDFN. Tomorrow's Ops- SD for PSMS.

2/15/24: BD well. Csg from 30 psi to 0 and intermediate 2 from 260 psi to 0. MIRU, Prime up and PT acid equipment. Pumped 5 bbls 10# brine, swapped and pumped 1500 gallons 15% double inhibited acid, swapped and flushed w/20 bbls 10# brine. Pumped 20 gallons H2S scavenger. Hit pressure @46 bbls pumped (650 psi) rode that pressure until we shutdown. Tbg went on vacuum. RDMO acid equipment. MIRU WLU. RIH w/2.2 GR. Went through top pkr @ 12,164' and tagged @ 12,171' (believe its the 2-3/8 X-over). POOH. ROH w/jet cutter. Due to distance of collar and on off tool from PKR we cut tbg @ 12,145'. POOH. Pulled on tbg 20 pts over neutral and tbg would not release. Decision made to free point in the morning. RDMO WLU. Secured well. Verified well secure. SDFN.

2/16/24: WL was in traffic due to bad accident in Jal. MIRU WLU. RIH w/GR to 12175'. Couldn't see the cut w/collar locator. POOH. RIH w/free point. We were 100% free below the cut area. POOH. Built gun and RIH w/jet cutter. Cut @ 12,147'. POOH. Pulled on tbg and lost weight. Knew we were free so we RDMO WLU. TOH std back 20 jnts 2-7/8 tbg to make sure nothing fell over us. SDFWE. Secured well. Verified well secure.

2/19/24: BD csg and tbg from 50 psi to 0 and intermediate 2 from 250 psi to 0. TOH std back and tally tbg. 383 jnt of 2-7/8. Tbg avg 31.63. MIRU WLU. RIH w/GRJB and tagged @ 12,144'. POOH. RIH w/wireline set CICR @ 12134'. POOH. RDMO WLU. Secure well. Verify well secure. SDFN.

2/20/24: TIH 378 jnts. 2-7/8 tbg. PU 6 jnts. Tagged CICR. LD 1 jnt. 365 bbls 10# brine @ 2 bpm. Good returns to the pit. PT csg 800 psi for 30 mins. PT good. Secured well. Verified well secure. SDFN.

2/22/24: BD intermediate 2 from 150 psi to 0. tbg from 70 psi to 0 and csg from 125 psi to 0. PT csg to 750 psi. Held good. PT tbg and it did not hold. TOH LD 383 jnts. MIRU LD machine and pipe racks. Unload and tally WS. PT csg to 1000 psi for 30 minutes. PT good. Secured well. Verified well secure. SDFN.

2/23/24: BD well. Csg from 40 psi to 0 and intermediate 2 from 150 psi to 0. MIRU WLU. Management came out to discuss incident and make clear the PSMS message from Wednesday's Safety Stand down. RIH w/5.75" GRJB (tagged CICR @ 12,147'). POOH. RIH w/6' rare earth magnet to bottom. Set magnet on CICR and worked it up and down 4 times. POOH. Came out w/8 pieces (roughly 2 1/4 centralizers). Secured well. Verified well secure. SDFN.

2/24/24: RIH w/6" rare earth magnet. Tag CICR @ 12,147'. POOH had about 3/4 of bow spring. RIH. Tagged @ 12,147 w/magnet. POOH. Didn't have anything but fine metal shavings. RDMO WLU. Secured well. Verified well secure. SDFN.

2/25/24: Tally PU and TIH 379 jnts 2-7/8 L80 tbg. Worked last 2 jnts while pumping 10# brine to fluff the top of CICR. Stung on and lost circulation to pit (meaning we were stung onto CICR and pumping below CICR. EIR. Pumped 40 bbls 10# brine @ 2 bpm w/1500 psi. Pumped 155 sks Class H CMT (FOF 1159', Slurry Vol 32.57 bbls, FW mix 19 bbls). Displaced w/71 10# brine. SIP 1000 psi. Bled off csg. Stung of CICR. LD 2 pup jnts. Broke circulation w/20 bbls 10# brine. Swappwd to CMT spotted 25 sks Class H CMT from 12,134' to 11,997' (FOF 137', Slurry vol 5.25 bbls, FW mix 3bbls). Displaced w/69.5 bbls 10# brine. TOH std back 30 jnts. Reverse circulated 70 bbls 10# brine. Secured well. Verified well secure. SDFN.

2/26/24: TOH std back 349 jnts. LD CICR stinger. Secured well. Wait on WLU to arrive on location. MIRU WLU. RIH w/logging tool. TTOC @ 11,942'. POOH logging CMT. RDMO WLU. Secure well. Verify well secure. SDFN.

2/27/24: TIH 363 jnts. EOT 11,600'. RDMO LD machine, pipe racks and cat walk.

2/28/24: Bleed down well. 363 jts 2 7/8 @ 11600. Spot 50 SKS Class H cement from 11600 - 11365. 6 bbls FW mix, 9.43 bbls slurry volume. Displace with 65.75 bbls brine. Lay down 57 jts. 306 jts in the hole, EOT @ 9773. Spot 45 sks Class H from 9773 - 9550. 5 1/2 bbls fresh water mix, 8.49 bbls slurry mix. Displace with 55 bbls brine. Lay down 49 jts. 257 jts in the hole, EOT @ 8212. Spot 45 sks Class H from 8212 - 8005, 5 1/2 bbls fresh water mix, 8.49 bbls slurry mix. Displace with 46.25 bbls brine. POOH with 40 jts. 217 jts in the hole, EOT @ 6934. Reverse out 50 bbls brine. Secure well, shut down for WOC.

2/29/24: TIH with 33 jts, tagged TOC at 7965 with jt 250. Lay down 44 jts. 206 jts in the hole, EOT at 6580. Spotted 25 sks Class H from 6580 - 6470. Cement is 1.06 yield, 15.6 lbs/gal. 3 bbls FW mix, 4.71 slurry volume. Displaced with 37.5 bbls brine water. Laid down 46 jts. EOT @ 5105 with 160 jts in the hole. Move in rig up Renegade wireline unit. V&V PCE and lifting equipment. Pick up 2 7/8 lubricator with weight bar and pressure test to 500#. Good test. Picked up 1 9/16 perforating gun with 6 shots. Pressure up casing to 500# and shoot holes at 5320. Casing pressure dropped to zero. No change in intermediate casing. Pull out of hole, rig down wireline. Tie pump to casing and pumped 50 bbls down intermediate. Pump rate was 3 bpm @ 200#. Bled off pressure, intermediate flowing back fluid pumped. Loaded 7" with 6 bbls. Injection rate 2 bpm @ 450#. POOH with tubing and pick up 7" AD1 packer. TIH with 160 and set packer at 5105. Squeeze 64 sks Class C cement. 1.32 yield, 14.80 lbs/gal. 9.6 bbls FW mix, 15.04 slurry volume. Displace with 32 bbls brine. Calculated top of cement at 5170. Intermediate starting circulating while displacing so pumped 10 bbls down intermediate after cement job. Secured well, shut down.

3/1/24: Bleed down casing pressure. Release packer and pick up 3 jts. Tagged TOC at 5175 with 163 jts. Pull packer up to 3507. Rig up Renegade 2 7/8 lubricator with weight bar and test PCE to 500#. Good test. Perform stray voltage test. Pick up 1 9/16 perf gun. Pressure up casing to 500#, monitor intermediate casing. Shoot holes at 4410. Casing pressure dropped to 0 PSI, nothing from intermediate. POOH with wireline. Pull packer and set at 3413 with 107 jts. Put 500# on casing. Break circulation with 10 bbls. Pumped dye sweep. 192 bbls for dye to get to surface. Calculated 185 bbls. Pumped 225 sks Class C. 53 bbls slurry volume, 33 3/4 bbls FW mix. 1.32 yield, 14.80 lbs/gal. Displaced with 27 3/4 bbls. CTOC at 3615. Tubing on slight vacuum. Bleed off casing pressure and release packer. POOH with 107 jts and packer slowly. SWSWDW.

3/4/24: TIH 117 jnts plus 5'. TTOC @ 3735'. Pumped down intermediate. 5.5 bbls and got pressure. TOH LD 117 jnts. MIRU WLU. RIH and perf @ 871' due to collar @ 860'. RDMO WLU. ND BOP. NU B1 adapter. Move WS out of the way. WS released and will be picked up tomorrow AM. Pumped 10 bbls dyed 10# brine followed by CMT. Sqz 289 sks Class C CMT (FW mix 43.5 bbls, Slurry vol 67.94). Got CMT to surface, closed intermediate and put 500 psi on csg. Closed in csg. Cleaned pump to cellar. RD aux equipment. Secured well. Verified well secure SDFN.

3/5/24: RDMO. XTO to cut off WH and install DHM.

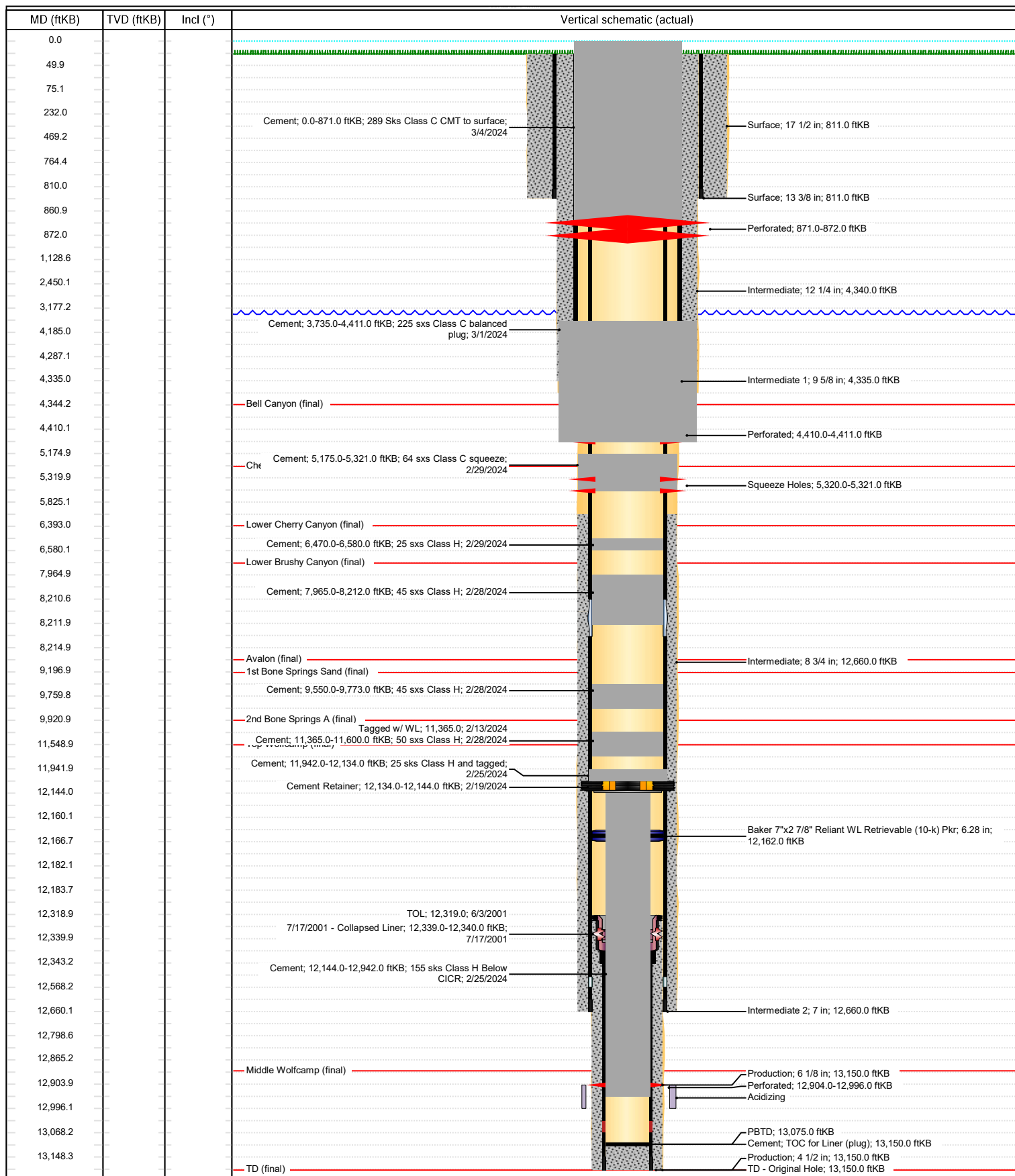
3/14/24: Cut off WH and installed DHM.



# Schematic - Vertical with Perfs

Well Name: Poker Lake Unit 148

API/UWI 3001531085	SAP Cost Center ID 1137311001	Permit Number	State/Province New Mexico	County Eddy
Surface Location T24S-R31E-S32	Spud Date 4/28/2001 15:00	Original KB Elevation (ft) 3,469.90	Ground Elevation (ft) 3,442.30	KB-Ground Distance (ft) 27.60



Sante Fe Main Office  
Phone: (505) 476-3441

General Information  
Phone: (505) 629-6116

Online Phone Directory  
<https://www.emnrd.nm.gov/oed/contact-us>

State of New Mexico  
Energy, Minerals and Natural Resources  
Oil Conservation Division  
1220 S. St Francis Dr.  
Santa Fe, NM 87505

CONDITIONS

Action 472942

CONDITIONS

Operator: XTO PERMIAN OPERATING LLC. 6401 HOLIDAY HILL ROAD MIDLAND, TX 79707	OGRID: 373075
	Action Number: 472942
	Action Type: [C-103] Sub. Plugging (C-103P)

CONDITIONS

Created By	Condition	Condition Date
gcordero	Clean Location in accordance with 19.15.25.10 NMAC.	7/25/2025
gcordero	Submit C-103Q within one year of plugging.	7/25/2025