

Santa Fe Main Office  
Phone: (505) 476-3441  
General Information  
Phone: (505) 629-6116

State of New Mexico  
Energy, Minerals and Natural Resources

Form C-103  
Revised July 18, 2013

Online Phone Directory Visit:  
<https://www.emnrd.nm.gov/ocd/contact-us/>

OIL CONSERVATION DIVISION  
1220 South St. Francis Dr.  
Santa Fe, NM 87505

SUNDRY NOTICES AND REPORTS ON WELLS (DO NOT USE THIS FORM FOR PROPOSALS TO DRILL OR TO DEEPEN OR PLUG BACK TO A DIFFERENT RESERVOIR. USE "APPLICATION FOR PERMIT" (FORM C-101) FOR SUCH PROPOSALS.)		WELL API NO. 30-025-21497
1. Type of Well: Oil Well <input type="checkbox"/> Gas Well <input type="checkbox"/> Other <input checked="" type="checkbox"/> Acid Gas Injection Well		5. Indicate Type of Lease STATE <input type="checkbox"/> FEE <input checked="" type="checkbox"/>
2. Name of Operator Targa Midstream Services, LLC		6. State Oil & Gas Lease No.
3. Address of Operator 811 Louisiana Street, Ste.2100, Houston, TX 77002		7. Lease Name or Unit Agreement Name EUNICE GAS PLANT SWD
4. Well Location Unit Letter L : 2580 feet from the South line and 1200 feet from the West line Section 27 Township 22S Range 37E NMPM County Lea		8. Well Number 001
11. Elevation (Show whether DR, RKB, RT, GR, etc.) 3,335 (GR)		9. OGRID Number 24650
		10. Pool name or Wildcat SWD: San Andres

12. Check Appropriate Box to Indicate Nature of Notice, Report or Other Data

NOTICE OF INTENTION TO:

PERFORM REMEDIAL WORK ☐ PLUG AND ABANDON ☐  
TEMPORARILY ABANDON ☐ CHANGE PLANS ☐  
PULL OR ALTER CASING ☐ MULTIPLE COMPL ☐  
DOWNHOLE COMMINGLE ☐  
CLOSED-LOOP SYSTEM ☐  
OTHER: ☐

SUBSEQUENT REPORT OF:

REMEDIAL WORK ☐ ALTERING CASING ☐  
COMMENCE DRILLING OPNS. ☐ P AND A ☐  
CASING/CEMENT JOB ☐  
OTHER: Mechanical Integrity Test (MIT) ☒

13. Describe proposed or completed operations. (Clearly state all pertinent details, and give pertinent dates, including estimated date of starting any proposed work). SEE RULE 19.15.7.14 NMAC. For Multiple Completions: Attach wellbore diagram of proposed completion or recompletion.

The Mechanical Integrity Test (MIT) was conducted on Thursday, April 10, 2025. Barbara Lydick (NMOCD) was on-site to oversee and approve the MIT.

Initial Annular Pressures – Surface/Intermediate: 0 psi, Intermediate/Production: 18 psi.

Production Casing 14 psi, Tubing 794 psi.

The following is a step-by-step summary of results:

1. Monahans NippleUp crew was on site to perform the test. The production casing was bled down to atmosphere. The intermediate and surface casing annular spaces were bled down completely to the atmosphere and lines from the diesel pump truck and a calibrated chart recorder were attached to the production annular space well valve to record pressure changes during the MIT.

2. Diesel was added from the pump truck to achieve the beginning test pressure. The well and chart recorder were then isolated from the truck and the MIT began at 11:00 AM with the annular pressure at 580 psi.

3. During the test, the annular pressure remained consistent at 580 psi for 32 minutes.

The surface and intermediate casing valves were closed following the MIT.

4. The chart recorded the annular pressure until 11:32 AM (32 minutes). Diesel was then bled back to 0 psi and the chart was removed from the recorder. An operating pressure of 300 psi was then added to the annular space.

The MIT pressure chart and well bore diagram are attached.

Spud Date:

Rig Release Date:

I hereby certify that the information above is true and complete to the best of my knowledge and belief.

SIGNATURE Matt Eales TITLE Regulatory DATE 5-26-25

Type or print name Matt Eales E-mail address: meales@targaresources.com PHONE: 832-446-7573  
**For State Use Only**

APPROVED BY: \_\_\_\_\_ TITLE \_\_\_\_\_ DATE \_\_\_\_\_

Conditions of Approval (if any):



# AS-BUILT AGI WELL SCHEMATIC

Eunice Gas Plant SWD #1

30-025-21497

Section 27, T22S, R37E

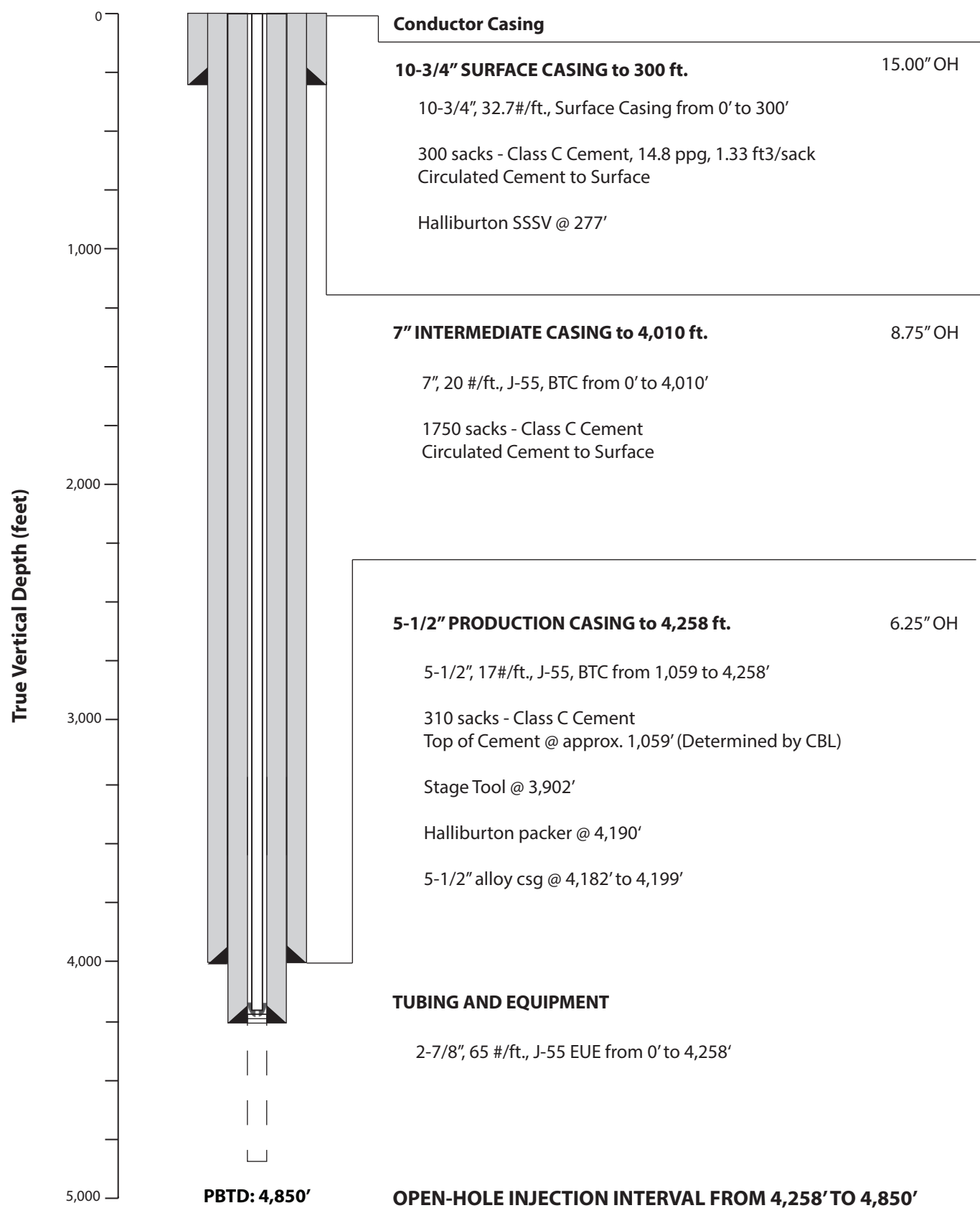
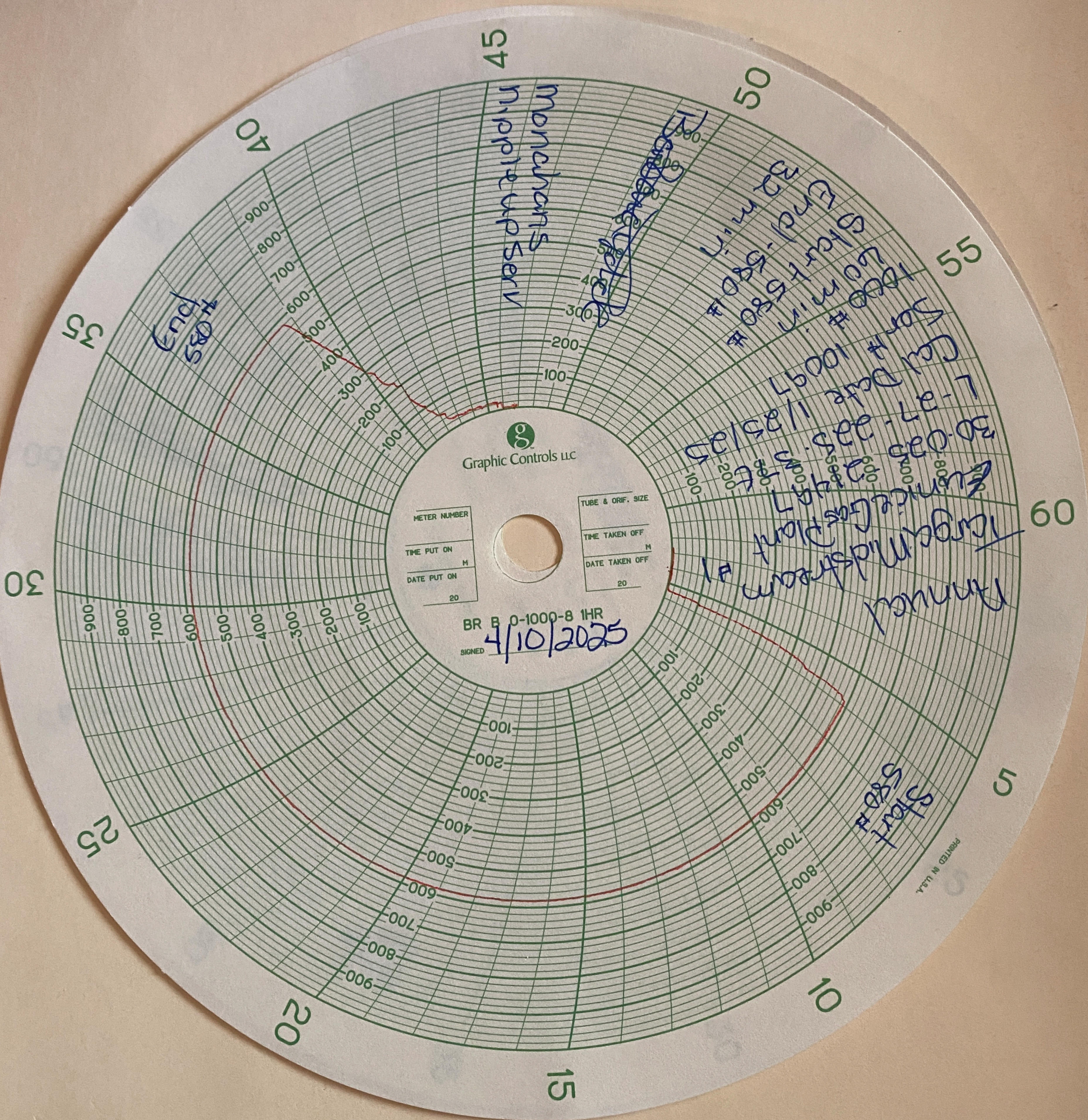


Figure 2. Eunice Gas Plant SWD #1 as-built well schematic





METER NUMBER  
TIME PUT ON  
DATE PUT ON

TUBE & ORIF. SIZE  
TIME TAKEN OFF  
DATE TAKEN OFF

BR B 0-1000-8 1HR  
SIGNED 4/10/2025

PRINTED IN U.S.A.



Sante Fe Main Office  
Phone: (505) 476-3441

General Information  
Phone: (505) 629-6116

Online Phone Directory  
<https://www.emnrd.nm.gov/ocd/contact-us>

State of New Mexico  
Energy, Minerals and Natural Resources  
Oil Conservation Division  
1220 S. St Francis Dr.  
Santa Fe, NM 87505

CONDITIONS

Action 467115

CONDITIONS

Operator: Targa Northern Delaware, LLC. 110 W. 7th Street, Suite 2300 Tulsa, OK 74119	OGRID: 331548
	Action Number: 467115
	Action Type: [C-103] Sub. General Sundry (C-103Z)

CONDITIONS

Created By	Condition	Condition Date
mgebremichael	None	7/25/2025