

Santa Fe Main Office
Phone: (505) 476-3441
General Information
Phone: (505) 629-6116

State of New Mexico
Energy, Minerals and Natural Resources

Form C-103
Revised July 18, 2013

Online Phone Directory Visit:
<https://www.emnrd.nm.gov/ocd/contact-us/>

OIL CONSERVATION DIVISION
1220 South St. Francis Dr.
Santa Fe, NM 87505

SUNDRY NOTICES AND REPORTS ON WELLS (DO NOT USE THIS FORM FOR PROPOSALS TO DRILL OR TO DEEPEN OR PLUG BACK TO A DIFFERENT RESERVOIR. USE "APPLICATION FOR PERMIT" (FORM C-101) FOR SUCH PROPOSALS.) 1. Type of Well: Oil Well <input type="checkbox"/> Gas Well <input type="checkbox"/> Other INJECTOR		WELL API NO. 30-025-05427
2. Name of Operator CHEVRON MIDCONTINENT, L.P.		5. Indicate Type of Lease STATE <input checked="" type="checkbox"/> FEE <input type="checkbox"/>
3. Address of Operator 6301 Deauville BLVD, Midland TX 79706		6. State Oil & Gas Lease No.
4. Well Location Unit Letter F : 1650 feet from the NORTH line and 1733 feet from the WEST line Section 06 Township 17S Range 37E NMPM County LEA		7. Lease Name or Unit Agreement Name Lovington Paddock Unit
		8. Well Number 56
		9. OGRID Number 241333
		10. Pool name or Wildcat [40660] Lovington, Paddock
11. Elevation (Show whether DR, RKB, RT, GR, etc.) 3833		

12. Check Appropriate Box to Indicate Nature of Notice, Report or Other Data

NOTICE OF INTENTION TO: PERFORM REMEDIAL WORK <input type="checkbox"/> PLUG AND ABANDON <input type="checkbox"/> TEMPORARILY ABANDON <input type="checkbox"/> CHANGE PLANS <input type="checkbox"/> PULL OR ALTER CASING <input type="checkbox"/> MULTIPLE COMPL <input type="checkbox"/> DOWNHOLE COMMINGLE <input type="checkbox"/> CLOSED-LOOP SYSTEM <input type="checkbox"/> OTHER: <input type="checkbox"/>		SUBSEQUENT REPORT OF: REMEDIAL WORK <input type="checkbox"/> ALTERING CASING <input type="checkbox"/> COMMENCE DRILLING OPNS. <input type="checkbox"/> P AND A <input checked="" type="checkbox"/> CASING/CEMENT JOB <input type="checkbox"/> OTHER: <input type="checkbox"/>	
--	--	--	--

13. Describe proposed or completed operations. (Clearly state all pertinent details, and give pertinent dates, including estimated date of starting any proposed work). SEE RULE 19.15.7.14 NMAC. For Multiple Completions: Attach wellbore diagram of proposed completion or recompletion.

See attached plugging report and as plugged wellbore diagram

Spud Date:

Rig Release Date:

I hereby certify that the information above is true and complete to the best of my knowledge and belief.

SIGNATURE Zachary Hopkins TITLE Abandonment Engineer DATE 7/01/2025
 Type or print name Zachary Hopkins E-mail address: zachary.hopkins@chevron.com PHONE: 432-425-8107
For State Use Only

APPROVED BY: _____ TITLE _____ DATE _____
 Conditions of Approval (if any): _____



EMC Ops Summary - External (2)

Well Name LOVINGTON PADDOCK UNIT 056	Field Name Lovington	Lease Lovington Paddock Unit	Area Central Permian
Business Unit Mid-Continent	County/ Parish Lea	Global Metrics Region Lower 48	Surface UWI 3002505427

Basic Well Data			
Current RKB Elevation	Original RKB Elevation (ft) 3,823.34	Latitude (°) 32° 52' 12" N	Longitude (°) 103° 17' 24" W

Phases					
Actual Start Date	Actual End Date	Phase 1	Phase 2	Time Log Hrs (hr)	Percent Problem Time (%)
		PREP	FAC		
1/9/2023 11:30	1/9/2023 18:00	MOB	MOVEON	6.50	
1/10/2023 07:00	1/11/2023 12:00	ABAN	TBGPULL	16.00	
1/21/2023 12:00	6/9/2023 12:30	ABAN	CMTPLUG	82.75	
6/9/2023 12:30	6/14/2023 12:00	ABAN	CSGPULL	41.25	
6/14/2023 12:00	6/16/2023 17:30	ABAN	CMTPLUG	26.75	
7/20/2023 07:00	7/20/2023 12:00	REST	FAC	5.00	
8/3/2023 08:00	7/13/2024 09:00	ABAN	CMTPLUG	183.25	1.91
12/7/2023 10:00	12/10/2023 12:00	ABAN	PLGMILL	33.75	
1/24/2025 00:00	1/25/2025 00:00	MOB	MOVEON	9.50	

Start Date	Summary
1/4/2023	Rig Down WSU , ND BOP, NU B-1 Adapter Flange, PSI Test Flange, Prepare to Road P&A Equipment from LPU 56 to LSAU 31
1/5/2023	Road WSU from LSAU 14 to LPU 56, Spot In , R/U WSU, NU BOP or Squeeze Cement
1/9/2023	Hot Tap 2 3/8 Surface TBG wCudd PSI Control Services, Road WSU From LSAU 24 to LPU 56, Spot In, RU WSU, Flow Back PSI , Est. Injection Rate, Squeeze 35 sx Class C cement below packer and displace fluid, WOC Overnight
1/10/2023	Check PSI , Flow Back PSI, ND Well Head , NU BOP, Release PKR, LD 2 3/8 IPC Production String
1/11/2023	Rig down WSU , ND BOP, NU B-1 Adapter Flange, PSI Test Flange, Prepare To Road P&A Equipment From LPU 56 to LSAU 31
1/21/2023	JSA SWC SIF. MIRU CTU. Test BOP 250 PSI 5 mins 2500 PSI 10 mins. Pressure Tested Casing to 500 PSI held for 10 mins. RIH with 1.50" CT tagged packer at 5996'. Pumped 35 BBLS of MLF Calculated Volume between cement plugs. Placed 27 SKS of 1.32 cf/sk 14.80 ppg Class C Cement from 5996' to 5724'. POOH to 4602' Placed 37 SKS of 1.32 cf/sk 14.80 ppg Class C Cement from 4602' to 4227'. POOH to surface. Flush Eq. R/D Injector. Secure Loc.
1/23/2023	Dug out well head and repaired leaking surface risers. Shut down for wind to windy fo rcrane to pick up injector.
2/3/2023	Checked pressure's 0 psi all strings. Surface fsailed bubble test. Pressure tested casing 1000 psi 15 min tested good. TIH perforated at 3898' did not inject held 1000 psi. Tagged cement at 4320'. Upgraded cement with 9 sx 4320'-4228'. Spot 25 sx across perfs 3948'-3698'. WOC'd and tagged at 3675'. Perforated at 2127' no injection held 1000 psi. Spot 55 sx across perfs 2177'-1620'.
2/4/2023	Held safety meeting check pressure. Montior surface failed bubble test Tested casing to 1000 psi passed TIH w/ gun perf at 650 EIR at 1000 psi .3 BPM TOH TIH w/ gun perf at 645' EIR at 1000 psi .75 BPM not com at surf RD equipment MO
2/16/2023	Review JSA, check PSI, Site Prep Surface for Cut and Pull, Expose 8 5/8 WH
2/27/2023	Road WSU From LPU 131 Top OFF to LPU 56, Spot In P&A Equipment, Review JSA, Check PSI, Prep Location For Cut and Pull
2/28/2023	Review JSA, Check PSI, Flow Down PSI,Perfom Buble Test, Site Prep Location, Wait on Base Beams, RU WSU
3/1/2023	Review JSA , Check PSI, Perform Daily Bubble Test, Spot In Base beams, RU WSU, ND 8 5/8 Well Head Flange for Cut and Pull, Spot WireLine Unit, RU WL Unit, RIH Cut CSG, LD WL, RU Fishing Equipment Pull/ LD CSG, RU CSG Crew, LD Access CSG.
3/2/2023	Review JSA, Check PSI, Perform Daily Bubble Test, ND WD , RU Fishing Tools, Attempt to Release Cut CSG, Unable to Release Cut CSG due to Operational Change By Engineering, RD Fishing Equipment, NU WH System / valves, Load CSG, PSI Test Surface Flange/ Well Head, Rig Down WSU in AM Due To High Winds
3/3/2023	Review JSA, Check PSI, RD WSU & P&A Aux. Equipment. Wait on Surface Crew to Complete LSAU 38, LSAU 38 will not be ready. Prepping LPU 85
6/8/2023	Road P&A equipment from LPU 148 and R/U same.
6/9/2023	MIRU lay down machine, power swivel, R/U and RIH with internal mechanical csg cutter and cut 5.5" csg at 10', R/U pump and could not establish circulation, contact Ryan Felix and obtain permission to cut csg again, cut 5.5" csg with second cutter at 11', was able to circulate around csg.
6/10/2023	N/D BOP, R/D wellhead support equipment, attempt to pull 5.5" csg from wellhead but 8 5/8" wellhead and 2.5' of 8 5/8" csg came with it. Contact Ryan Felix and discuss plan forward. RIH with 5.5" 32A pkr and set at 30' to secure well for weekend.
6/12/2023	Bleed well down, hydro-vac cellar to uncover 8 5/8" stub, RIH with 5 1/2" spear and pull on csg to free, csg started moving at 200K but csg jacks leaning to one side and had to be adjusted, R/D csg jacks and wellhead support equipment. Level and R/U support equipment then spot csg jacks.
6/13/2023	Engage csg with spear, pulled 10' until stuck, R/D spear ands R/U string shot, pulled to 218K for string shot and pull 4' of csg before setting off shot, set off string shot and made no difference, L/D landing sub and 4 full jts of 5 1/2" 17 ppf csg, have to jack about 6' of each jt and same place.
6/14/2023	Resume pulling csg, L/D 14 full jts of 5 1/2" 17 ppf csg (total of 18 full and 2 partial jts), P/U and RIH with csg scraper, tag at 38' and work scraper down to 44', shut down.
6/15/2023	RIH with 7 3/4 bit and scraper to 597', POOH and L/D BHA, RIH with tbg to 660' and spot 45sx of cement from 660'-462', POOH and WOC, RIH and tag cement at 485' and set CIBP at 479', pressure test csg to 500 psi-passed.
6/16/2023	Bubble test 8 5/8" csg-passed, RIH with 2 7/8" tbg to 485' and circulate 200sx of cement from 485'-0'. P&A complete.
7/20/2023	Review JSA, check well for pressure, blind sweep location, remove anchors, excavate around well and break concrete, excavate well and cut, got readings and bubbles from production, panel well and shut down.
8/3/2023	Prep Loc, Bubble Test. Weld swedge to surface casing. Pressure Test Swedge. RDMO.
8/9/2023	R/U 300-psi, fill w/ 1-gallon and squeeze 1.5-gallons of CHS @ 1000-psi, SWI
8/10/2023	R/U 300-psi, squeeze .5-gallons of CHS @ 1000-psi, SWI, 3-gallons used total 2-gallons squeezed
8/17/2023	Chech well for gas, Test well.
9/16/2023	Location had no gas. Well had 0 pressure. Well had a slight flow. Well failed bubble test was bubbling.
11/11/2023	Install 8 5/8" x 11" 3M Weld on Starter head, backfill location.
12/7/2023	NU BOP & Riser, Weld on CT connector, RU well head support, RU Filter & pump,
12/8/2023	NU BOP, MU BHA, Test BOP, RIH tag @8', Drill out cement to 157', CC clean, POOH, Debrief.
12/9/2023	RU Quintuplex, RU centrifugal pump, Pump 8 bbl brine, RIH, Drill out cement, lost 220 bbl in well, Debrief.
12/10/2023	ND BOP & Lubricator, RD equipment,
2/27/2024	Held safety meeting. Move from Keller 34-1 to LPU 56
2/28/2024	Held safety meeting, check pressure. R/U NU BOP Test
2/29/2024	Held safety meeting, check pressure. TIH tag at 50' with casing scraper TOH TIH OE to 225' tagged fill TOH R/D
3/1/2024	Held safety meeting. MI Dragon install dead anchor onto crown RU
3/5/2024	Held safety meeting, check pressure. Set anchor MI energy NU crew NU annular
3/6/2024	Held safety meeting, check pressure. P/U BHA P/U PS ream from 50'-95' R/D PS L/D BHA



EMC Ops Summary - External (2)

Well Name LOVINGTON PADDOCK UNIT 056	Field Name Lovington	Lease Lovington Paddock Unit	Area Central Permian
Business Unit Mid-Continent	County/ Parish Lea	Global Metrics Region Lower 48	Surface UWI 3002505427
Start Date		Summary	
3/7/2024	Held safety meeting, check pressure. P/U BHA P/U PS ream from 95'-480' circulate sweep R/D PS L/D BHA		
3/8/2024	Held safety meeting, check pressure. TIH isolate casing leak TOH ND annular TIH OE Spot 130 sacks C cement TOH Squeeze 100 sacks at 50'-0'		
3/9/2024	Held safety meeting, check pressure. Tag TOC at 10' ND BOPE NU WH RD		
3/22/2024	Review JSA,check well for pressure, blind sweep and remove anchors, excavate, slope and cut well, had bubbles coming from well, let well vent, no readings but bubbles, paneled well and shut down.		
4/17/2024	Review JSA,check area for gas, check well for gas, clean up casing and pack with purple K to kill gas readings, weld swedge on casing and attach 2" nipple and valve, let cool and then hydro test to 500 PSI, good test, put up panel, call WSI to pick up wellhead for reuse on another well, shut down.		
4/27/2024	Held Safety Meeting. Check Pressures. Had 3 PSI on swegde with CO Readings. Cleaned out well bore and swedge with water. Vac out all water. Mix and dump 3 Gals of TS23S topped off well with water. Hesitated Sqz 1 Gal maintaining 400 PSI for 4 hrs. Topped off well with 1 gal of TS23S. Hesitated Sqz 1 Gal maintaining 400 PSI for 30 mins. Topped off well with 1 gal of TS23S. Pressured up well to 500 PSI and shut in. RDMO		
5/4/2024	Bubble test.		
6/5/2024	Review JSA,check well for pressure and gas, cut off swage, clean off well, weld new swage on and pressure test well. well passed, crew panelled well and shut down.		
7/12/2024	Held Safety Meeting . Check Well Pressures. Well Open & Venting upon Arrival. No Gas Readings Present. Flow Check 30 Min . Spot in & R/U 3rd Party Equip. Pressure Test Casing to 1000 psi. Bled Down to 300 psi Stabilized in 5 Min. Remove H2O From Well with Vac Pump. Pour in 1/2' Gallon Nano Seal. Start Hesitation Squeeze in small Psi Increments. Total Nano Seal Squeezed 52 oz .End Pressure 1000 Psi. Secure Well.		
7/12/2024	Held Safety Meeting. Check Well Pressure 225 Psi. R/U Pumping Equipment. Start Hesitation Squeezing with 8 oz Nano Seal. End Pressure 1000 Psi. Secure Well. Load out Pumping Equip. Set up Portable Barriers around open cellar.		
8/1/2024	Bubble Test Well, Failed bubble test, 0 on all quad readings, needle valve plugged, removed needle valve, Zero pressure after removal, shut-in and checked quad agan 54 CO, 0 LEL, 0 H2S. Left open to vent.		
8/4/2024	Bubble Test Well, Failed bubble test bubbles every 30 seconds, 0 on all quad readings, shut-in and checked quad agan 35 CO, 0 LEL, 0 H2S. No pressure build up. Left open to vent.		
8/19/2024	Held Safety Meeting. Check Well. Well open Venting. Spot Pumping Equip & Vac Trucks. Pull Nano Seal from Well. Wash out 8 5/8" x 2" Bell Nipple. Mix & Pour 12.7 ppg Microfine Cmt. Wash up Equip. Pour in 20 oz Nano Seal. Start Hesitation Squeeze Operations. Total Squeeze today 44 oz . Rate of Squeeze for 10 Hrs / .0733 Ounces Per Min, 4.398 ounces per Hr. Final SICP 1000 psi . R/O Equip. Secure Well.		
8/20/2024	Held Safety Meeting, Check overnight Squeeze pressure 50 psi. R/U 300 psi Pumping Equip. Continue Hesitation Squeeze Operations with Nano Seal. Todays Volume 12 oz. End SICP 1000 psi. R/O Pumping Equip. Secure Well. Job Complete.		
11/2/2024	Install and test wellhead.		
1/8/2025	Daily Summary: -Held safety meeting w/ Well Foam, WSI & Wellhead Support. -Offloaded trucks, staged equipment & spotted tanks. -STBY for Gladiator to AOL for PMCOW -Held Pre-Job Safety Meeting with all BPs -MIRU Gladiator 2 3/8" CTU & support equipment. -Flow checked well, ND blind flange, NU 11" 5M Blind Ram BOP. -Loaded well stack w/ glycol & SI well. -SDFN		
1/9/2025	Daily Summary: - AOL, Held safety meeting with all BP's & accessed pad safety concerns due to freezing conditions. - Released all BP's & SD for the day.		
1/10/2025	Daily Summary: - AOL, Held safety meeting with all BP's - Completed RU WHS - Spotted in & RU Warrior crane - Tested coil BOPs on the stump - Stabbed BOPs on well - PU injector head/lubricator sections & stabbed on to BOPs - Performed Wellsafe drill		
1/11/2025	Daily Summary: - AOL, Held safety meeting with all BP's - Swung off the well & loaded reel - Tested weld on CC - Tested pump iron - MU/tested BHA -NU BOPs & tested break - Opened well & RIH - Tagged & milled cement from 14' to 200' CTM. - Circulated hole clean, POOH to surface & SI well.		
1/12/2025	Daily Summary: - AOL, Held safety meeting with all BP's - Lined out pump lines/valves & broke circulation - Opened well, RIH & tagged cement @ 200' ctm - Milled cement from 200' to 488' ctm - Tagged & milled CIBP from 14:15 to 17:30 - Circulated hole clean, POOH to surface & SI well.		
1/13/2025	Daily Summary: - AOL, Held safety meeting with all BP's - Lined out pump lines/valves & broke circulation - Opened well, RIH & tagged & milled CIBP @ 489' ctm from 08:45 to 11:15 - Milled cement from 492' to 501' ctm from 11:15 to 15:30.(Fought plug debris while attempting to mill remaining cement.) - Circulated hole clean, POOH to surface & SI well. - ND lubricator & swung off well - Function tested BHA, LD BHA, Cut 101' of coil, MU/tested new BHA w/ 7.625" 5 blade reverse clutch junk mill. - NU on well & tested break.		
1/14/2025	Daily Summary: - AOL, Held safety meeting with all BP's - Lined out pump lines/valves & broke circulation - Opened well, RIH - Milled cement from 498' to 500' ctm from 8:30 to 15:15.(Fought debris while attempting to mill remaining cement.) - Spoke w/ WSR Advisor, Engineer & Superintendent. Decision was made to POOH/RDMO - Circulated hole clean, POOH to surface & SI well. - ND lubricator & swung off well - Inspected/LD BHA - Started RD.		



EMC Ops Summary - External (2)

Well Name LOVINGTON PADDOCK UNIT 056	Field Name Lovington	Lease Lovington Paddock Unit	Area Central Permian
Business Unit Mid-Continent	County/ Parish Lea	Global Metrics Region Lower 48	Surface UWI 3002505427
Start Date	Summary		
1/15/2025	Daily Summary: - AOL, Held safety meeting with all BP's - RDMO all associated BPs - ND 11" 5K blind ram & installed 8" blind flange - Completed Gladiator RDMO		
1/24/2025	Move from Carter Gas Com 1 to LPU 56 Held safety meeting check pressure MIRU held drops inspection set up equipment		
1/27/2025	Held safety meeting check pressure. ND WH NU BOP test BOP MI energy equipment		
1/28/2025	Held safety meeting check pressure. PU Milling BHA tag TOC at 508 RU PS mill down to 511 RD PS TOH inspect mill		
1/29/2025	Held safety meeting check pressure P/U 7x4 bullnose mill TIH tag at 515' milled to 516' TOH laydown tools		
1/30/2025	Held safety meeting check pressure. P/U 5-3/4 rock bit TIH with DC and TBG tagged at 515 drilled to 532		
1/31/2025	Held safety meeting check pressure. Continue drilling from 535' to 610' CC String became stuck worked loose POH to 475		
2/1/2025	Held safety meeting, check pressure. Wash/Clean down to 602' RDPS TOH		
2/3/2025	Held safety meeting, check pressure. P/U under reamer clean out from 594'-477 TOH		
2/4/2025	Held safety meeting check pressure PU 4-3/4 bit and 7-5/8 string mill cleanout to 609 TOH laydown BHA P/U 4-3/4bit and 3-1/2 DC TIH		
2/5/2025	Held safety meeting check pressure. Continue drilling to from 609-630 and hit tight spot dropped threw at 632. Continued to drill from 632'-665' hit tight spot drilled 6" CC pulled up to next connection		
2/6/2025	Held safety meeting check pressure. Continue drill/mill unable to make any hole TOH PU 4-1/2 bit and 4-3/4 SM TIH tagged at 631 worked threw at 633 started drilling at 665 drilled to 669'		
2/7/2025	Held safety meeting check pressure. Continue drilling dropped out at 674.5 TIH tag TOC at 1604' CC clean TOH L/D BHA TIH with PKR set at 1590' test casing to 1000' TOH to 563'		
2/10/2025	Held safety meeting check pressure. TIH set PKR at 1590' RUWL run 2 passes of TGT log RDWL		
2/11/2025	Held safety meeting, check pressure. RUWL run 3rd TGT pass RDWL TOH		
2/12/2025	Held safety meeting. Stand by for Gator tool		
2/13/2025	Held safety meeting, check pressure. TIH with Gator tool and PKR Perf at 1475 and test perf at 780' CC TOH L/D Gator tool P/U 5-1/2 PKR set at 821'		
2/14/2025	Held safety meeting check pressure. CC Pump 25 sacks Micro fine at 1445-1245'		
2/17/2025	Held safety meeting check pressure. CC TOH EIR TOH PU 700' tail pipe TIH W/ PKR set at 755 Pump 150 sacks C cement at 1505-2650 WOC attempted to release PKR (TBG stuck) CC circulated well clean with blue dye		
2/18/2025	Held safety meeting check pressure. RUWL log well CC Pump EPG fluid train.		
2/19/2025	Held safety meeting check pressure. Monitor well. Stand by for orders		
2/20/2025	Held safety meeting check pressure. RUWL cut 2-7/8 tubing at 577' RDWL TOH RUWL set RBP at 567' RDWL TIH w/ PKR set at 96' Test RBP TOH ND BOP NU WH		
2/21/2025	Held safety meeting check pressure. Lower operators stand R/D equipment		
4/22/2025	Move from WLU 45 to LPU 56 MIRU PU		
4/23/2025	Held safety meeting check pressure. Complete R/U P&A equipment ND WH NU BOP MIRU WH support test BOP spot in equipment		
4/24/2025	Held safety meeting, check pressure. P/U RBP retrieval tool TIH latch onto the RBP TOH LD RBP PU overshot without the grapple		
4/25/2025	Held safety meeting check pressure. TIH with PKR and overshot MIRU compass Pump 125 sacks C cement WOC		
4/28/2025	Held safety meeting check pressure. Test tubing TOH with OS TIH with PKR monitor TOH LD PKR PU OS TIH latch on at 577'		
4/29/2025	Held safety meeting check. MIRU Renegade WL set 2-7/8 CIBP at 723' RDWL monitor TOH LD OS load well monitor TIH with PKR CC		
4/30/2025	Held safety meeting check pressure. Monitor well TOH to 30' Monitor well TOH with PKR MIRU WL Log well RDWL TIH with PKR to 60' Monitor TIH with PKR to 93' monitor TOH TIH set RBP TOH TIH with PKR test RBP		
5/1/2025	Held safety meeting, check pressure. TOH with PKR ND BOP NU WH test R/D equipment		
5/11/2025	Pre-Ops meeting. MIRU. RIH with gauge ring. RIH with expansion tool. Expand bottom 2 sequences per Renegade recommendation. POOH. NU/Test B1. SDFN.		
5/12/2025	PTSM, N/D flange, P/U Csg expander tool, Expand Csg, L/D expander tool, N/U flange & test, RDMO all equipment, Debrief crews		
5/23/2025	Move from LPU 71 to LPU 56 MIRU equipment ND flange monitor NU flange		
5/27/2025	Held safety meeting check pressure N/D WH NU BOP RU WHS		
5/28/2025	Held safety meeting check pressure. TIH latch onto RBP CC well clean TOH TIH w/PKR 577' monitor TOH set PKR at 30' monitor		
5/29/2025	Held safety meeting check pressure. TOH monitor R/D change out cables		
5/30/2025	NU BOP, Circulate 90 sx, Class C cement, 1.32 yield, 14.8 ppg: 0-45' Final shut-in pressure: 325 psi Full returns out the ground		
6/2/2025	Held safety meeting check pressure. NU energy equipment power swivel, NU BOP (WSEA 9-A) SD for storm resume ops in AM		
6/3/2025	Held safety meeting check pressure. RIH w/ 4 3/4" drill collar DO cement to 78' hit sand mill down to RBP circulate the hole clean. PT CSG to 90 psi 5 min pressure held. Bled CSG to 0 pick up 20' SI secure well.		
6/4/2025	Held safety meeting check pressure. TOH w/ 4 3/4" drill collar and BHA, Pull RPB from 95', RIH w 18 jts 2 7/8" circulate bottoms up, TOH, & bubble test well.		
6/5/2025	Held safety meeting check pressure., RIH w 18 jts 2 7/8" circulate bottoms up, TOH, & bubble test well, Attempt to RIH set packetr hit cement just below BOP. Wellsafe tabletop SI drill while running tbg. SD for tornado watch.		
6/6/2025	Held safety meeting check pressure. Sniff test well15 ppm CO present. Attempted to RIH w/ string mill unsuccessful. CSG looks to have shifted. Bubble test failed, Cement plug 250' set @ 577-327' hold 100 PSI on csg. WOC		
6/9/2025	Held safety meeting check pressure. Monitor well TIH tag TOC at 322' TOH monitor well PU PKR TIH to 96' test cement plug Failed test TIH to 322 tested cement plug Failed Monitor well TIH to 332 Pump 13 sacks C cement at 332-282 TOH to toc reverse out TOH to 193' Pressure up to 500 psi		
6/10/2025	Held safety meeting check pressure. TIH tag TOC at 298' Test plug TOH Monitor TIH spot 90 sacks C cement at 298-0 TOH R/D N/D BOP Load equipment		
6/12/2025	Held S/M, Fill out Permit & pre screen loc. Review FORO JSAs, fill out PTW, review SIF hazards and mitigations, reinforce SWA. Discuss Chevron tenet #2. - MIRU FORO laser unit – Excavate and install can, Set laser, performed cut, - excavated around can, pulled can & removed WH - 5' surface casing Topped off with cement - Took pictures - Install plate/marker - Back-filled hole, removed rig anchors & RDMO. Held debrief with crew.		

LPU 56 Proposed WELLBORE DIAGRAM

(11-07-2024)

Created: 01/26/08 By: I da Silva
 Updated: By:
 Lease: Lovington Paddock Unit
 Field: Lovington Paddock Unit
 Surf. Loc.: 1650 FNL 1733 FWL
 Bot. Loc.:
 County: Lea St.: NM
 Status: Active Injection Well

Well #: 56 St. Lse:
 API: 30025054270000
 Unit Ltr.: Section: 6
 TSHR/Rng: 17 S 37 E
 Unit Ltr.: Section:
 TSHR/Rng:
 Directions: Lovington, NM
 Chevno: FA6554

Surface Casing

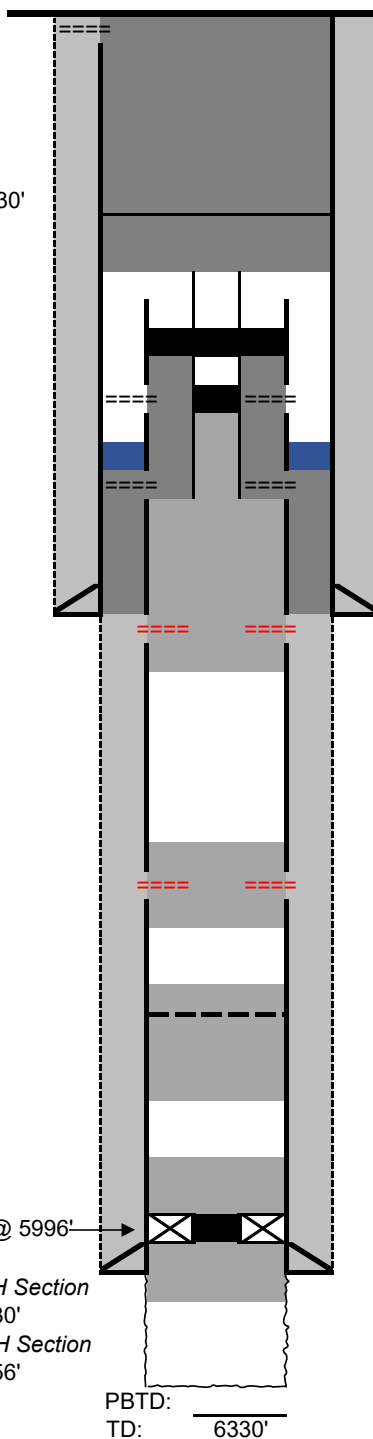
Size: 8-5/8" Damage at 30'
 Wt., Grd.: 32 & 24#
 Depth: 2026'
 Sxs Cmt: 975
 Circulate: Y
 TOC: Surf
 Hole Size: 11"

Production Casing

Size: 5-1/2"
 Wt., Grd.: 17#
 Depth: 6100'
 Sxs Cmt: 400
 Circulate: N
 TOC: 4139 (T.S.)
 Hole Size: 7-7/8"

Prod/Inj Interval

Completion: OH
 Hole Size: 4-2/4"

**4-6/2025:**

Gator cuts at 780' and 1,475'
 Squeeze latex cement f/ 1,575' - 2,026' with 126 sks
 Tubing Stuck. Tubing cut at 577'. Packer stuck at 755'
 Circulate 54' of EPG in Annulus f/ 1,375' - 1,325'
 Tag 743' inside 2-7/8". Set CIP at 732'.
 Casing Expansion: 430', 395', 353', 292'
 Circulate 90 sks Class C f/ 45' - 0, and drill out
 Spot 65 sks Class C f/ 577' - 327' WOC. Tag 322
 Spot 13 sks Class C f/ 332' - 282'. Tag 298
 Spot 90 sks Class C f/ 298 - 3
1/2025: Drill out to 1,604'
6/14/23: Cut/pull 5-1/2" f/ 610'
2/4/23: Perf at 650 .03 BPM 1000 psi
 Perf at 645 .75 bpm at 1000 psi
2/3/23: Perf @ 2,127'; unable to est.

injection rate. Spot 55 sx Class C f/ 2,177'
 - 1,620'; tag plug @

KB:
 DF: 3820'
 GL:
 Ini. Spud: 10/08/53
 Ini. Comp.: 11/14/53

2/3/23: Perf @ 3,898'; unable to est.
 injection rate. Spot 25 sx Class C f/ 3,948'
 - 3,698'

2/3/23: Spot 9 sx Class C f/ 4,320' - 4,228'
1/21/23: Spot 37 sx Class C f/ 4,602' -
 4,227'; tag plug @ 4,320'

1/21/23: Spot 27 sx Class C f/ 5,996' -
 5,724'

1/9/23: Squeeze 35 sx Class C below
 packer; release on-off tool and LD tbq

AD-1 Pkr @ 5996'

Current OH Section
 6100' - 6330'
 Original OH Section
 6100' - 6256'

PBTD:
 TD: 6330'

Sante Fe Main Office
Phone: (505) 476-3441

General Information
Phone: (505) 629-6116

Online Phone Directory
<https://www.emnrd.nm.gov/ocd/contact-us>

State of New Mexico
Energy, Minerals and Natural Resources
Oil Conservation Division
1220 S. St Francis Dr.
Santa Fe, NM 87505

CONDITIONS

Action 483790

CONDITIONS

Operator: CHEVRON MIDCONTINENT, L.P. 6301 Deauville Blvd Midland, TX 79706	OGRID: 241333
	Action Number: 483790
	Action Type: [C-103] Sub. Plugging (C-103P)

CONDITIONS

Created By	Condition	Condition Date
gcordero	Clean Location in accordance with 19.15.25.10 NMAC.	8/12/2025
gcordero	Submit C-103Q within one year of plugging.	8/12/2025