

Office
District I - (575) 393-6161
1625 N. French Dr., Hobbs, NM 88240
District II - (575) 748-1283
811 S. First St., Artesia, NM 88210
District III - (505) 334-6178
1000 Rio Brazos Rd., Aztec, NM 87410
District IV - (505) 476-3460
1220 S. St. Francis Dr., Santa Fe, NM 87505

State of New Mexico
Energy, Minerals and Natural Resources

Form C-103
Revised July 18, 2013

OIL CONSERVATION DIVISION
1220 South St. Francis Dr.
Santa Fe, NM 87505

WELL API NO. 30-015-55313
5. Indicate Type of Lease STATE [X] FEE []
6. State Oil & Gas Lease No.
7. Lease Name or Unit Agreement Name SEVERITAS 2 STATE SWD
8. Well Number 1
9. OGRID Number 4323
10. Pool name or Wildcat SWD: DELAWARE
11. Elevation (Show whether DR, RKB, RT, GR, etc.) 3173' GL

SUNDRY NOTICES AND REPORTS ON WELLS
(DO NOT USE THIS FORM FOR PROPOSALS TO DRILL OR TO DEEPEN OR PLUG BACK TO A DIFFERENT RESERVOIR. USE "APPLICATION FOR PERMIT" (FORM C-101) FOR SUCH PROPOSALS.)
1. Type of Well: Oil Well [] Gas Well [] Other SWD
2. Name of Operator CHEVRON USA, INC.
3. Address of Operator 6301 DEAUVILLE BLVD., MIDLAND, TEXAS 79706
4. Well Location Unit Letter A : 809 feet from the NORTH line and 960 feet from the EAST line Section 2 Township 26S Range 27E NMPM County EDDY

12. Check Appropriate Box to Indicate Nature of Notice, Report or Other Data

NOTICE OF INTENTION TO:
PERFORM REMEDIAL WORK [] PLUG AND ABANDON []
TEMPORARILY ABANDON [] CHANGE PLANS []
PULL OR ALTER CASING [] MULTIPLE COMPL []
DOWNHOLE COMMINGLE []
CLOSED-LOOP SYSTEM []
OTHER: DFITs AND SRTs [X]
SUBSEQUENT REPORT OF:
REMEDIAL WORK [] ALTERING CASING []
COMMENCE DRILLING OPNS. [] P AND A []
CASING/CEMENT JOB []
OTHER: []

13. Describe proposed or completed operations. (Clearly state all pertinent details, and give pertinent dates, including estimated date of starting any proposed work). SEE RULE 19.15.7.14 NMAC. For Multiple Completions: Attach wellbore diagram of proposed completion or recompletion.

- 1. CONDUCT THREE (3) DIAGNOSTIC FRACTURE INJECTION TESTS (DFITs) ON THE BRUSHY CANYON FORMATION
2. CONDUCT THREE (3) DIAGNOSTIC FRACTURE INJECTION TESTS (DFITs) ON THE CHERRY CANYON AND BELL CANYON FORMATIONS THE PERMIT APPROVAL DOES NOT SPECIFICALLY REQUIRE A C-103 TO BE SUBMITTED FOR THESE DFITs. CHEVRON USA, INC. IS INCLUDING THEM IN THE C-103 SO NMOCD STAFF UNDERSTANDS THE COMPLETE SEQUENCE AND GEOMETRY OF THE OPERATIONS WHEN INTEGRATED WITH ITEM NUMBER 3 NEXT.
3. CONDUCT A STEP RATE TEST (SRT) ON THE ISOLATED CHERRY CANYON FORMATION AND A STEP RATE TEST (SRT) ON THE ISOLATED BELL CANYON FORMATION

PLEASE SEE ATTACHED DOCUMENTS FOR THE SEQUENTIAL STEPS AND DESCRIPTION OF THE DFITs AND SRTs ON THE SEVERITAS 2 STATE SWD 1 (API # 30-015-55313)

Spud Date: []

Rig Release Date: []

I hereby certify that the information above is true and complete to the best of my knowledge and belief.

SIGNATURE Carol Adler TITLE Sr. Regulatory Permitting Specialist DATE 6/25/2025

Type or print name Carol Adler E-mail address: caroladler@chevron.com PHONE: (432) 687-7148

For State Use Only

APPROVED BY: TITLE DATE

Conditions of Approval (if any):

the
human  **energy**
companyTM

**Severitas 2 State SWD 1
DFITs and SRTs Proposed Program**

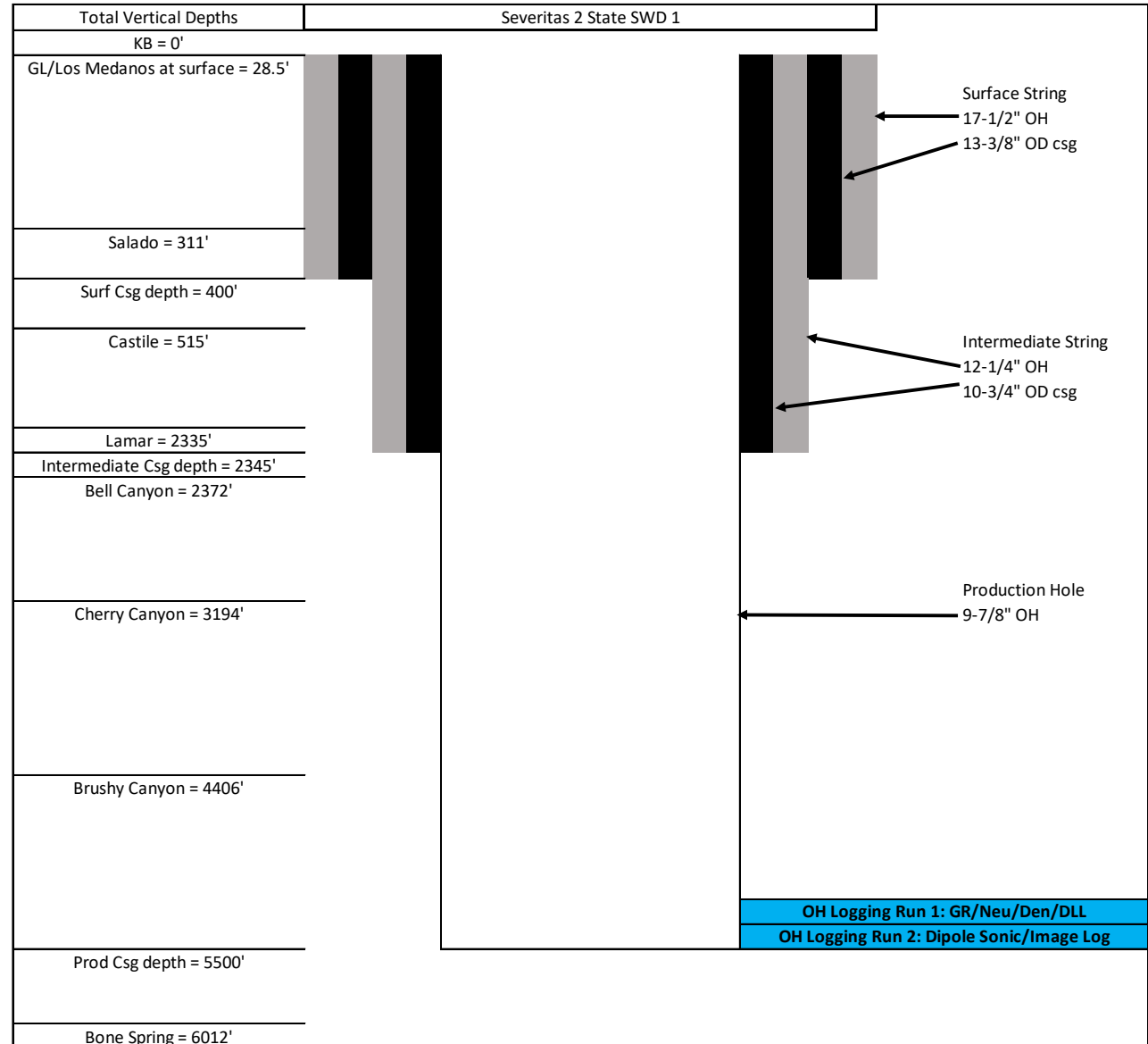
June 20, 2025

Purpose

- Show wellbore configurations for the DFIT and SRT data acquisition for the Severitas 2 State SWD 1.
- DFITs will be used to calibrate sonic log interpretations of closure stress.
- SRT are used for permitted surface injection pressures in the Bell and Cherry Canyon Formations.
- Execution:
 - DFIT data gathered in the Brushy Canyon Formation (and seal off since this will be a non-injection zone).
 - DFIT and SRT in the Cherry Canyon Formation (injection zone).
 - DFIT and SRT in the Bell Canyon formation (injection zone).
 - Submit this data and other required documentation in order to secure approval before start of injection.

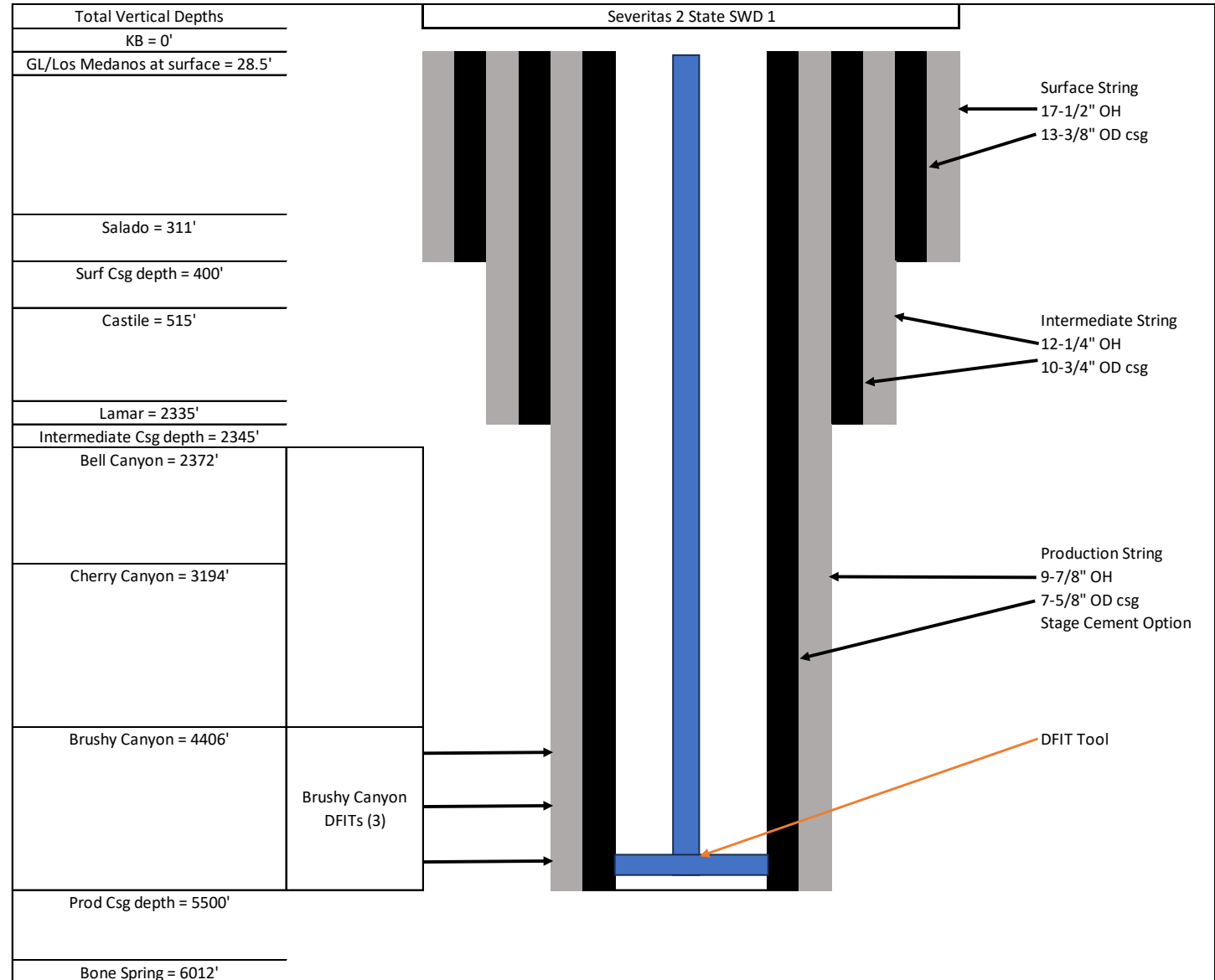
Injection Open Hole Logs

- Drill out intermediate shoe to TD.
- Conduct Run 1 OH logs: GR/Neu/Den/DLL
- Conduct Run 2 OH logs: Dipole Sonic/Image Log
- Data to be provide to OCD.



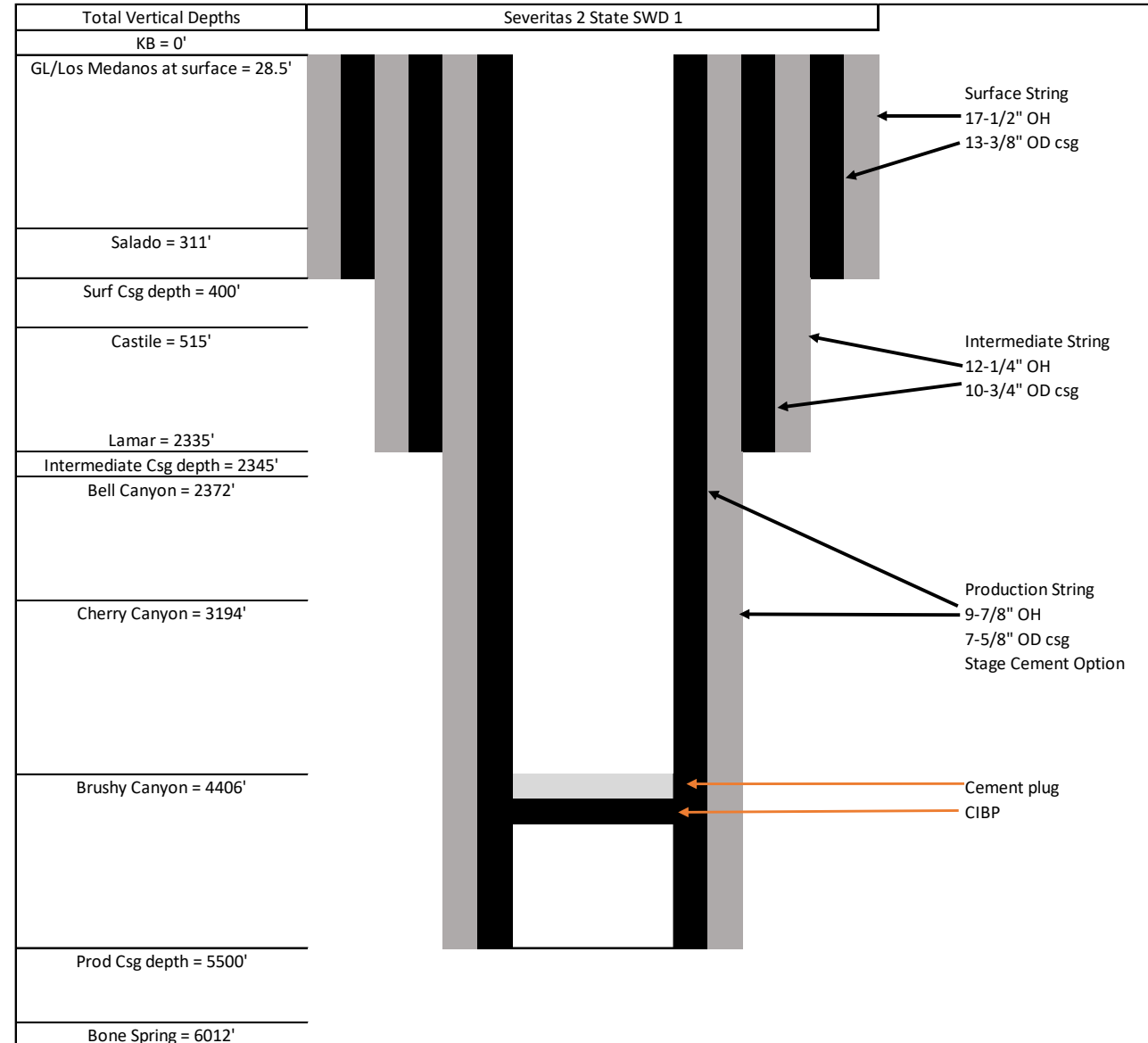
Brushy Canyon Fm DFITS

- Non-injection target, data collection only
- Brushy Canyon Formation action
 - Cut holes and run 3 DFITs
 - Target
 - Carbonate
 - Sand
 - Shale



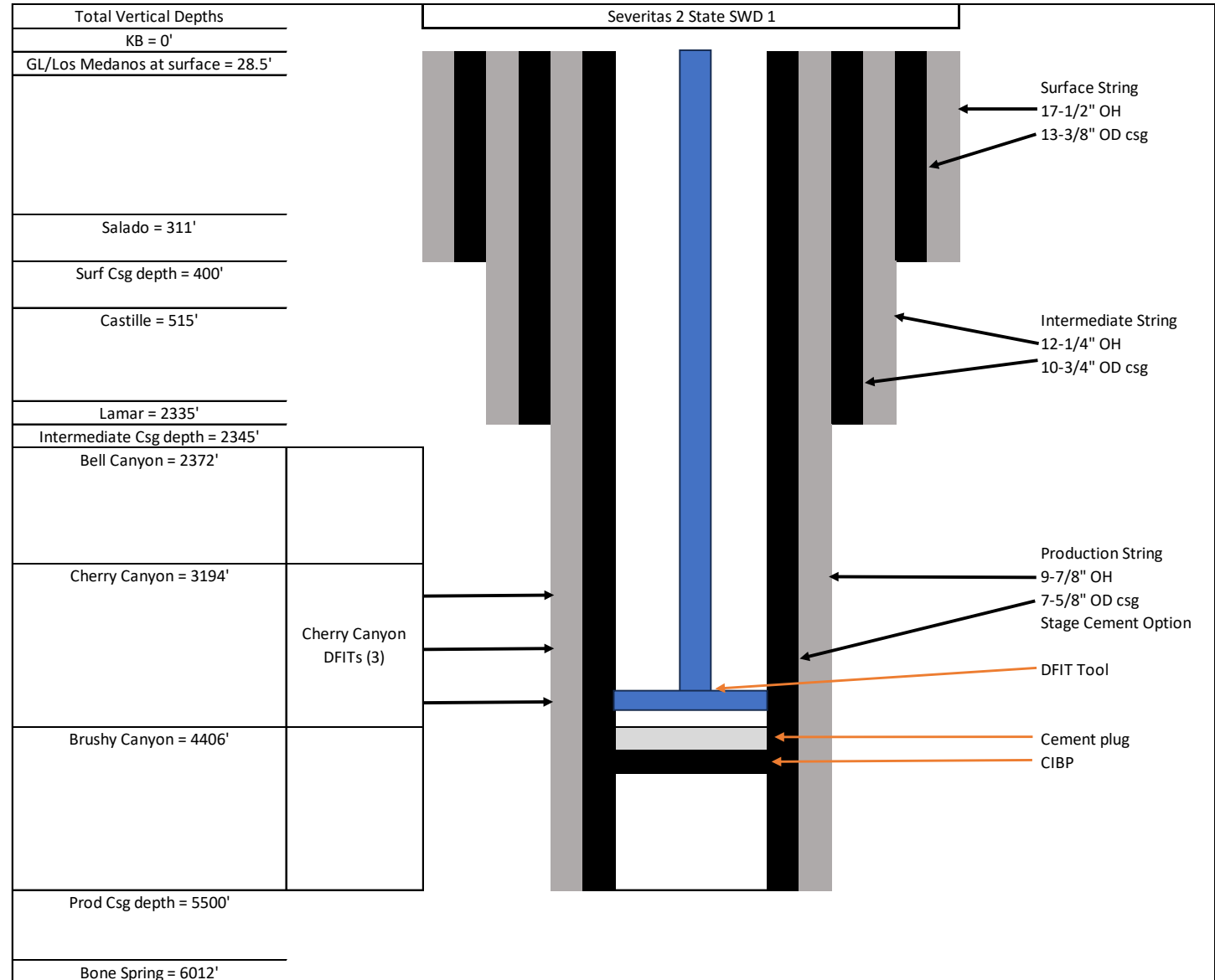
Brushy Canyon Fm: Abandonment

- Set CIBP as close to the Brushy as possible (set depth for CIBP to be determined on formation tops) and pressure test mechanical barrier per NMOCD and Chevron standards.
- Spot 100' of cement on top of CIBP.
 - Class C or H cement depending on depth



Cherry Canyon Fm DFITs

- Cherry Canyon Formation action
 - Cut holes and run 3 DFITs
 - Target
 - Carbonate
 - Sand
 - Shale



Cherry Canyon Fm Perforations and SRT

Perforate remaining section of Cherry Canyon Formation post DFIT (check logs to evaluate the injection quality of lower Cherry that may not be perforated due to tool configuration)

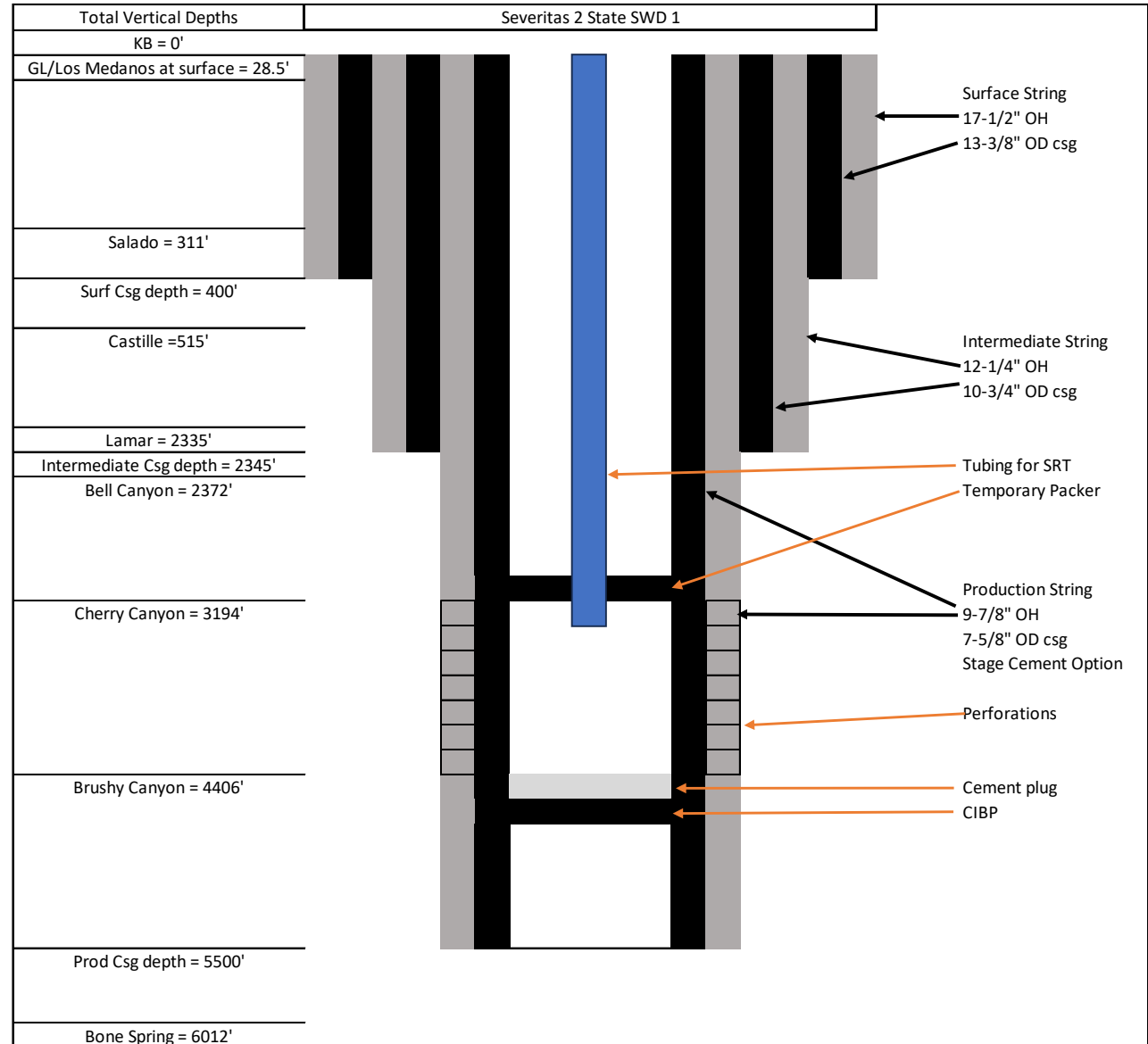
- Run in memory pressure gauge and tubing/packer. Set Packer.
- Pressure Test Packer (MIT must pass)
- Rig Up pumping equipment and start SRT

SRT Procedure

Cherry Canyon			
Step	% of Max Rate	Rate (BPM)	Duration (min)
1	12%	0.5	60
2	20%	0.9	60
3	30%	1.3	60
4	40%	1.7	60
5	60%	2.6	60
6	80%	3.4	60
7	100%	4.3	60

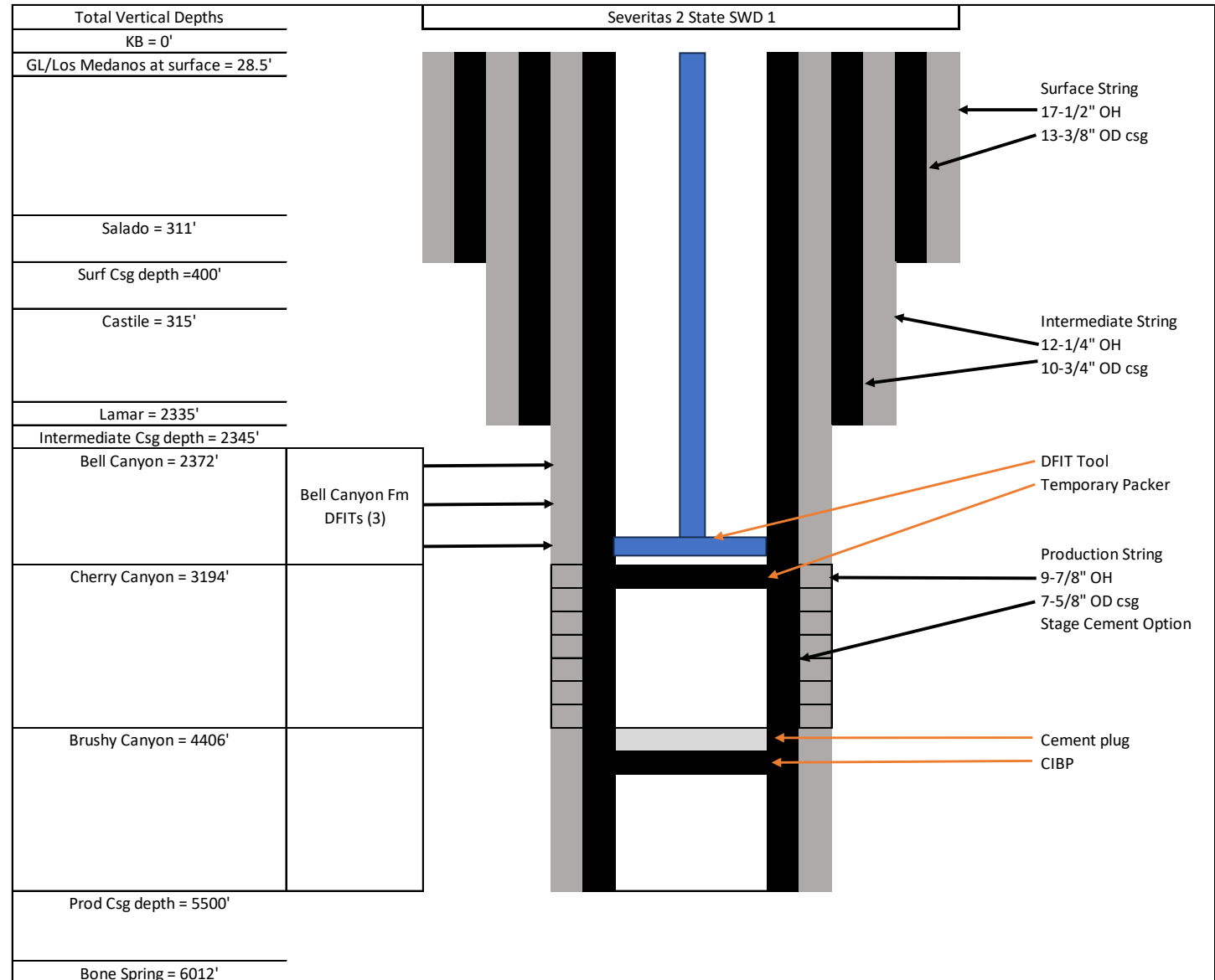
*Rates calculated using Darcy's Law and estimated DMG pore pressure/frac gradients

*Higher rates expected in the Cherry formation than Bell formation due to thickness



Bell Canyon Fm DFITs

- Bell Canyon Formation action
 - Cut holes and run 3 DFITs
 - Target
 - Carbonate
 - Sand
 - Shale



Bell Canyon Fm Perforations and SRT

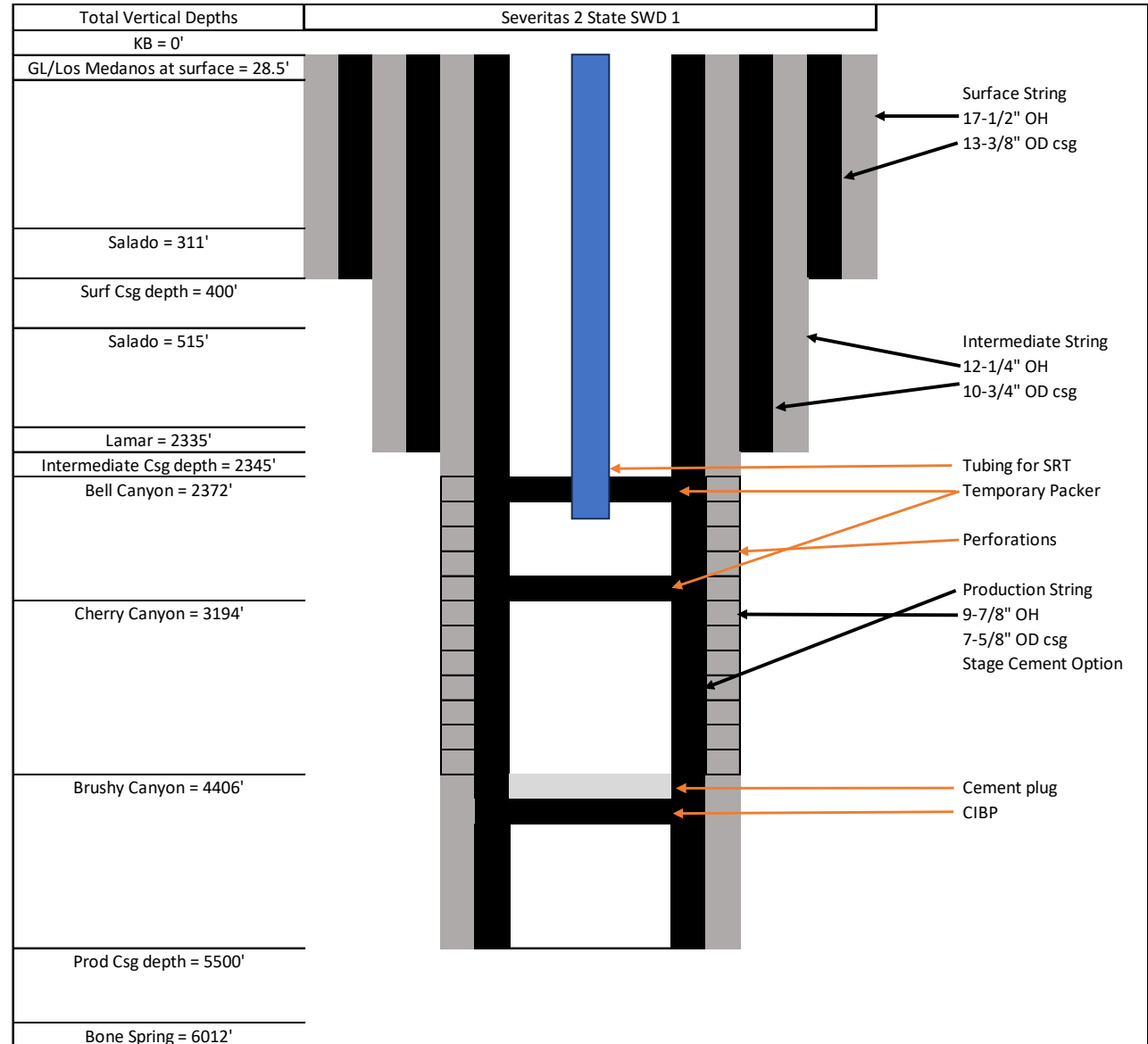
- Perforate remaining section of Bell Canyon Formation post DFIT (check logs to evaluate the injection quality of lower Bell that may not be perforated due to tool configuration)
- Run in memory pressure gauge and tubing/packer. Set Packer.
- Pressure test Packer (MIT must pass)
- Execute SRT

SRT Procedure

Bell Canyon			
Step	% of Max Rate	Rate (BPM)	Duration (min)
1	29%	0.5	60
2	35%	0.6	60
3	40%	0.7	60
4	50%	0.9	60
5	65%	1.1	60
6	80%	1.4	60
7	100%	1.7	60

*Rates calculated using Darcy's Law and estimated DMG pore pressure/frac gradients

- Pull tubing/packer
- Pull RBP isolating Cherry Canyon



Final Configuration (upon approvals)

Make final completion run with 5.5”

tubing and 7-5/8” packer. Set Packer

per NMOCD permit.

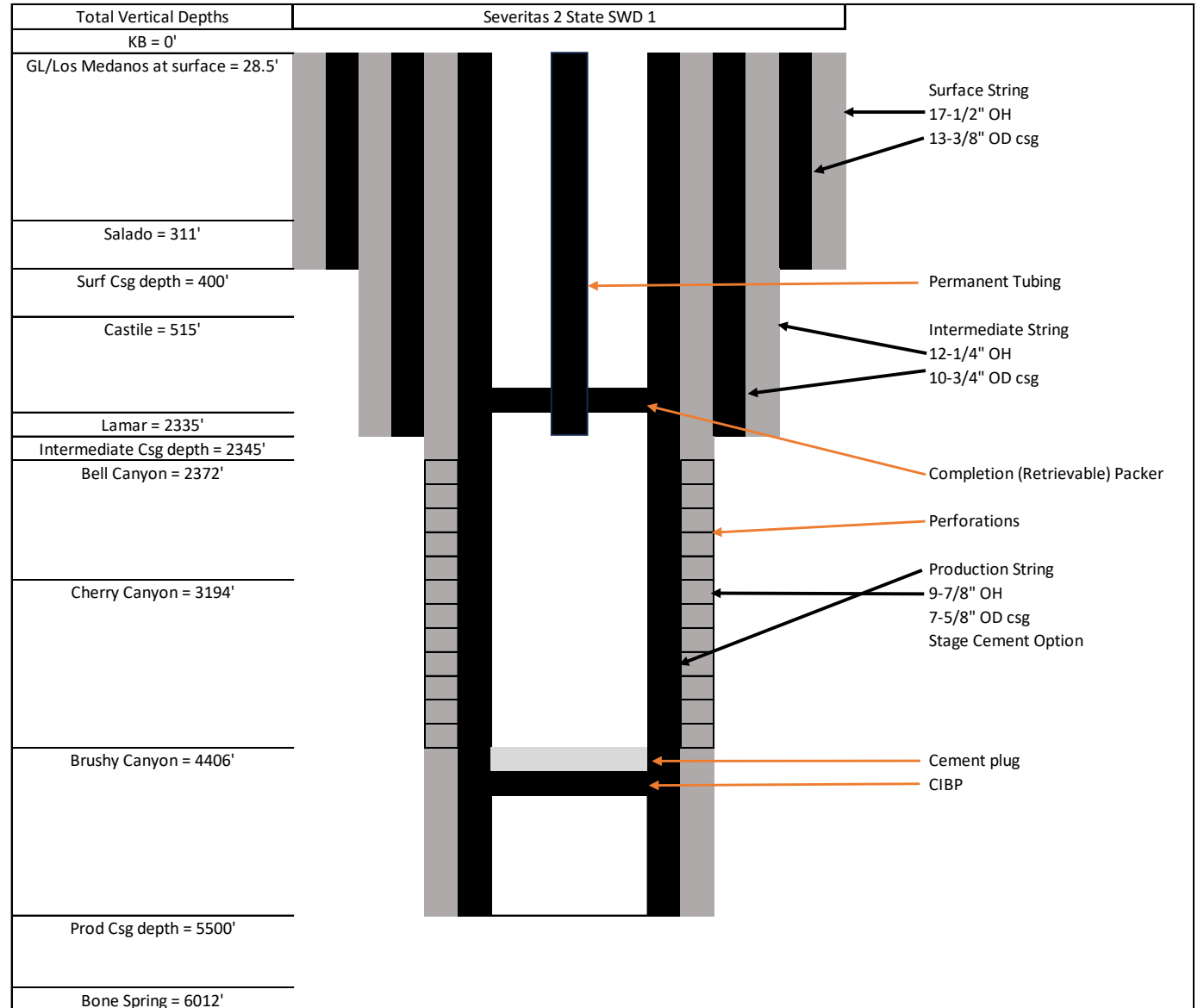
- Conduct MIT and submit results of MIT and SRTs to NM OCD.

- Land tubing and terminate TEC line

- for DHPG.

- Nipple Up Injection Tree.

- Wait for all final approvals before starting injection.



Sante Fe Main Office
Phone: (505) 476-3441

General Information
Phone: (505) 629-6116

Online Phone Directory
<https://www.emnrd.nm.gov/ocd/contact-us>

State of New Mexico
Energy, Minerals and Natural Resources
Oil Conservation Division
1220 S. St Francis Dr.
Santa Fe, NM 87505

CONDITIONS

Action 488562

CONDITIONS

Operator: CHEVRON U S A INC 6301 Deauville Blvd Midland, TX 79706	OGRID: 4323
	Action Number: 488562
	Action Type: [C-103] NOI General Sundry (C-103X)

CONDITIONS

Created By	Condition	Condition Date
anthony.harris	Submit DFIT results using a C-103 Subsequent Report	8/26/2025