

U.S. Department of the Interior
BUREAU OF LAND MANAGEMENT

Well Name: CANYON LARGO UNIT

Well Location: T24N / R6W / SEC 11 /
NENW / 36.332169 / -107.439911

County or Parish/State: RIO
ARRIBA / NM

Well Number: 304

Type of Well: OIL WELL

Allottee or Tribe Name:

Lease Number: NMSF078877

Unit or CA Name: CANYON LARGO
UNIT--GLLP/MNCS

Unit or CA Number:
NMNM78383C

US Well Number: 3003922687

Operator: HILCORP ENERGY
COMPANY

Subsequent Report

Sundry ID: 2869438

Type of Submission: Subsequent Report

Type of Action: Plug and Abandonment

Date Sundry Submitted: 08/25/2025

Time Sundry Submitted: 07:46

Date Operation Actually Began: 08/15/2025

Actual Procedure: Hilcorp Energy Company has plugged and abandoned the subject well on 8/22/2025 per the attached detail reports. The P&A is in response to the NMOCD bradenhead directive, cMPK2515354361.

Well Name: CANYON LARGO UNIT

Well Location: T24N / R6W / SEC 11 /
NENW / 36.332169 / -107.439911County or Parish/State: RIO
ARRIBA / NM

Well Number: 304

Type of Well: OIL WELL

Allottee or Tribe Name:

Lease Number: NMSF078877

Unit or CA Name: CANYON LARGO
UNIT--GLLP/MNCSUnit or CA Number:
NMNM78383C

US Well Number: 3003922687

Operator: HILCORP ENERGY
COMPANY

Operator

I certify that the foregoing is true and correct. Title 18 U.S.C. Section 1001 and Title 43 U.S.C. Section 1212, make it a crime for any person knowingly and willfully to make to any department or agency of the United States any false, fictitious or fraudulent statements or representations as to any matter within its jurisdiction. Electronic submission of Sundry Notices through this system satisfies regulations requiring a

Operator Electronic Signature: PRISCILLA SHORTY

Signed on: AUG 25, 2025 07:46 AM

Name: HILCORP ENERGY COMPANY

Title: Regulatory Technician

Street Address: 382 ROAD 3100

City: AZTEC

State: NM

Phone: (505) 324-5188

Email address: PSHORTY@HILCORP.COM

Field

Representative Name:

Street Address:

City:

State:

Zip:

Phone:

Email address:

BLM Point of Contact

BLM POC Name: MATTHEW H KADE

BLM POC Title: Petroleum Engineer

BLM POC Phone: 5055647736

BLM POC Email Address: MKADE@BLM.GOV

Disposition: Accepted

Disposition Date: 08/25/2025

Signature: Matthew Kade

CANYON LARGO UNIT 304**30.039.22687****PLUG AND ABANDONMENT**

8/15/2025 - RU RIG & PUMPING EQUIP. CK PSI; TBG-100#, CSG-40#, BH-40#, BDW 10 MINS. FT BOP. WORK WH FLANGE FREE (RUSTY) NU BOP. RU RF & TBG EQUIP.. WORK TBG FREE. LD 32 JTS. SIW, SDFN.

8/18/2025 - CK PSI: TBG-160#, CSG-200#, BH-80#. BDW 10 MINS. LD 167 JTS 2 3/8" J55 TBG. SWAP FLOATS. TALLY, RABBIT & PUP. RIH W/ 4.5" SM TO 5400'. TOO H LD. SM. TIH W/ 4.5" CR. S&R CR @ 5360'. EST CIRC W/ 70 BBLS. PUMP 100 TOTAL. PSI TEST CSG TO 600# FOR 30 MINS. NO TEST. TOO H. LD STINGER. SIW, SDFN. **ASHLEY SCHNIEDER, BLM REP, ON LOCATION.**

8/19/2025 - CK PSI: TBG-0#, CSG-100#, BH-80#. BDW 5 MINS. RU DRAKE WL. RIH W/ CBL TOOL. LOG WELL FROM 5360'. RD WL. TIH W/ TS TO CIBP. EST CIRC. RETEST CSG. NO TEST. **PLUG #1 FROM 5360' - 5232' (128')(2 3/8"X4.5") M&P 10 SKS CLASS G, 15.8PPG, 1.15YIELD, 2.0BLSRY, 1.1MIX, 19DIS, 2%CAL.** LD TOC. REVERSE OUT. TOO H. SIW. WOC. TIH **TAG TOC @5285'**. (BLM APPROVED TAG) LD TBG TO PLUG #2. EST CIRC. PSI TEST CSG. NO TEST. **PLUG #2 FROM 4560' - 4380' (128')(2 3/8"X4.5") M&P 14 SKS CLASS G, 15.8PPG, 1.15YIELD, 2.8BLSRY, 16.6DIS, 1.6MIX, 2%CAL.** LD TOC. REVERSE OUT. TOO H. SIW. WOC. SDFN. **ASHLEY SCHNIEDER, BLM REP, ON LOCATION.**

8/20/2025 - CK PSI; TBG-0#, CSG-0#, BH-40#, BDW 2 MINS. TIH **TAG TOC @ 4436'** (BLM REP APPROVED TAG). LD TBG TO PLUG #3. PSI TEST CSG. NO TEST. **PLUG #3 FROM 3680' - 3475' (205')(2 3/8"X4.5") M&P 16 SKS, CLASS G 1.15YIELD, 15.8PPG, 3.2BLSRY, 1.9MIX, 13.2DIS, 2%CAL.** LD TOC. TOO H, SIW. WOC. TIH **TAG TOC @ 3527'** (BLM REP APPROVED TAG) LD TBG TO PLUG #4. PSI TEST CSG TO 600# PSI. NO TEST. **PLUG #4 FROM 2980' - 2800' (180')(2 3/8"X4.5") M&P 14 SKS CLASS G, 15.8PPG, 1.15YIELD, 2.8BLSRY, 1.6MIX, 10.6DIS. 2%CAL.** LD TOC. REVERSE OUT. TOO H SIW. WOC. TIH **TAG TOC @ 2850'** (BLM REP APPROVED TAG) LD TBG TO PLUG #5. PSI TEST CSG TO 600# PSI. NO TEST. **PLUG #5 FROM 2175' - 1995' (180')(2 3/8"X4.5") M&P 14 SKS CLASS G, 15.8PPG, 1.15YIELD, 2.8BLSRY, 1.6MIX, 10.6DIS. 2%CAL.** LD TOC. REVERSE OUT. TOO H SIW. WOC. SDFN. **ASHLEY SCHNIEDER, BLM REP, ON LOCATION.**

8/21/2025 - CK PSI; TBG-0#, CSG-0#, BH-40#, BDW 2 MINS. TIH **TAG TOC @ 2054'**. EST CIRC. PSI TEST CSG TO 600# PSI. NO TEST. LD TBG TO PLUG #6. **PLUG #6 FROM 1840' - 1352'. (488')(2 3/8"X4.5") M&P 38 SKS CLASS G, 15.8PPG, 1.15YIELD, 7.7BLSRY, 4.5MIX, 5.1DIS, 2%CAL.** LD TOC. REVERSE OUT. TOO H. SIW, WOC. TIH **TAG TOC @ 1394'**. PSI TEST CSG TO 600# PSI. NO TEST. LD TBG TO 650'. TOO H. **HEC ENGINEER SENT AN EMAIL DOCUMENTING BLM & NMOCD APPROVAL FOR AN ADDITIONAL PLUG AND PERFS @ 700' DUE TO BH PSI.** RU DRAKE WL. RIH W/ TG & PERF @ 700'. EST A RATE OF 2.5BPM @ 300# PSI. EST CIRC FROM BH VALVE. PUMP 40 BBLS. RD WL. TIH W/ 4.5" CR. S&R CR @ 650'. SIBH FOR 30 MINS. CK BH PSI-15#. **PLUG #7 FROM 700' - 550' (150') M&P 42 SKS OF**

CANYON LARGO UNIT 304

30.039.22687

PLUG AND ABANDONMENT

CLASS G, 15.8PPG, 1.15YIELD, 8.6BLSRY, 5MIX, 2DIS, 8 ABOVE/ 34 BELOW. SIBH. APPLY 50# PSI. (CEMENT MIXED W/ EXPANSION CHEMICAL) LD TOC, REVERSE OUT. TOO H LD STINGER. SIW, SDFN. (BLEED OFF BH PSI AFTER 2 HRS & SIBH OVERNIGHT). **ASHLEY SCHNIEDER, BLM REP, ON LOCATION.**

8/22/2025 - CK PSI; TBG-0#, CSG-0#, BH-3#. BDW 0 MINS. TIH **TAG TOC @ 550'**. (BLM REP APPROVED TAG) LD ALL TBG. JSA. RU DRAKE WL. RIH W/ TG. PERF @ 253'. EST CIRC W/ 3 BBLS. PUMP 15 TOTAL. RD WL. **HEC ENGINEER SENT AN EMAIL DOCUMENTING APPROVAL TO ADD A RETAINER TO THE SURFACE PLUG, SQUEEZE BELOW AND CIRCULATE TO SURFACE. WOC AND BUBBLE TEST, THEN PRESSURE TEST AGAINST THE CIRC AND FILL UP THE 4.5" TO SURFACE.** APPROVAL TO SET A CR @ 203' & WOC PLUG 8A & TO PERFORM BUBBLE TEST AFTER WOC. TIH W/ CR. S&R 4.5" CR @ 203'. PSI TEST CSG TO 600# PSI FOR 30 MINS. TEST OK. (BLM & NMOCD APPROVED NO WOC ABOVE CR IF CSG TESTS) **PLUG #8A FROM 253'- 0' M&P 68 SKS CLASS G, 15.8PPG, 1.15YIELD, 13.9BLSRY, 8.MIX, .7DIS, 2%CAL,** CIRC CMNT TO SURF. DIS ALL CMT BELOW CR. CEMENT MIXED W/ EXPANSION CHEMICAL. SIBH. LD ALL TBG. SIW. WOC. BUBBLE TEST BH. TEST OK. PUP TO 203'. PSI TEST CR TO 600#. TEST OK. **PLUG #8B FROM 253'- 0'. M&P 25SKS CLASS G, 15.8PPG, 1.15YIELD, 5.1BLSRY, 3.1MIX. CIRC CMT TO SURF.** RD RF & TBG EQUIP. ND BOP. NU WH. DIG OUT WH. CUT & REMOVE WH. FIND TOC @ 15'. WELD & INSTALL **DHM @ 36.33233 N , 107. 44012 W.** TOP OFF CSG & CELLAR W/ 25 SKS. CLASS G, 15.8PPG, 1.15YIELD, RD RIG & PUMPING EQUIP DRAIN EQUIP. CLEAN & SECURE LOC. RR. **ASHLEY SCHNIEDER, BLM REP, ON LOCATION.**

WELL WAS PLUGGED AND ABANDONED ON 8/22/2025.



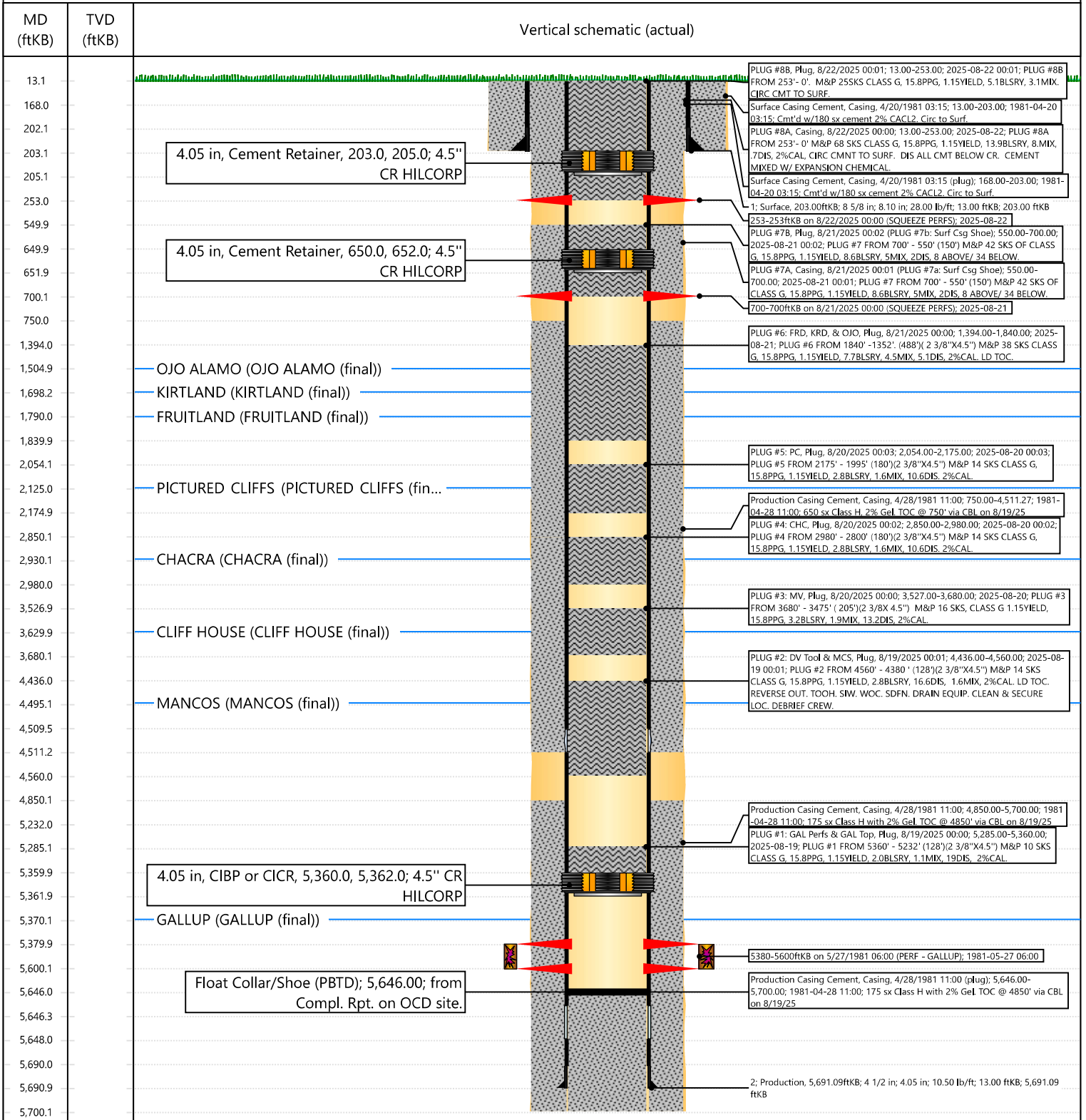
Current Schematic - Version 3

Well Name: CANYON LARGO UNIT #304

API / UWI 3003922687	Surface Legal Location C-11-24N-6W	Field Name	Route 1409	State/Province NEW MEXICO	Well Configuration Type Vertical
Ground Elevation (ft) 6,415.00	Original KB/RT Elevation (ft) 6,428.00	Tubing Hanger Elevation (ft)	RKB to GL (ft) 13.00	KB-Casing Flange Distance (ft)	KB-Tubing Hanger Distance (ft)

Tubing Strings					
Run Date 6/22/2007 06:00	Set Depth (ftKB) 5,421.75	String Max Nominal OD (in) 2 3/8	String Min Nominal ID (in) 2.00	Weight/Length (lb/ft) 4.70	Original Spud Date 4/19/1981 21:15

Original Hole, CANYON LARGO UNIT #304 [Vertical]





Priscilla Shorty

From: Diede, Loren, EMNRD <Loren.Diede@emnrd.nm.gov>
Sent: Friday, August 22, 2025 9:55 AM
To: Joe Zimmerman; Kade, Matthew H; Rennick, Kenneth G; Lucero, Virgil S
Cc: Farmington Regulatory Techs; Oscar Sanchez - (C); Maestas, Joseph I; Clay Padgett; John LaMond; Lee Murphy
Subject: RE: [EXTERNAL] P&A Revision Request for CANYON LARGO UN 304 (API: 3003922687)

CAUTION: External sender. DO NOT open links or attachments from UNKNOWN senders.

That approach is agreeable to the NMOCD.

Loren

Thank you,
Loren Diede
Petroleum Specialist III
Engineering Special Projects
Oil Conservation Division
1220 South St. Francis Drive
Santa Fe, New Mexico 87505
505-394-3582 OCD cell



From: Joe Zimmerman <joseph.zimmerman@hilcorp.com>
Sent: Friday, August 22, 2025 9:53 AM
To: Diede, Loren, EMNRD <Loren.Diede@emnrd.nm.gov>; Kade, Matthew H <mkade@blm.gov>; Rennick, Kenneth G <krennick@blm.gov>; Lucero, Virgil S <vlucero@blm.gov>
Cc: Farmington Regulatory Techs <FarmingtonRegulatoryTechs@hilcorp.com>; Oscar Sanchez - (C) <Oscar.Sanchez@hilcorp.com>; Maestas, Joseph I <jimaestas@blm.gov>; Clay Padgett <cpadgett@hilcorp.com>; John LaMond <jlamond@hilcorp.com>; Lee Murphy <lmurphy@hilcorp.com>
Subject: RE: [EXTERNAL] P&A Revision Request for CANYON LARGO UN 304 (API: 3003922687)

All,

As discussed, we are proposing to add a retainer to this surface plug, we will squeeze below it and circulate cement to surface on the backside, WOC and bubble test, then pressure test against the CICR and fill up the 4.5" to surface. See attached updated procedure/schematic.

Priscilla Shorty

From: Kade, Matthew H <mkade@blm.gov>
Sent: Friday, August 22, 2025 9:55 AM
To: Joe Zimmerman; Diede, Loren, EMNRD; Rennick, Kenneth G; Lucero, Virgil S
Cc: Farmington Regulatory Techs; Oscar Sanchez - (C); Maestas, Joseph I; Clay Padgett; John LaMond; Lee Murphy
Subject: Re: [EXTERNAL] P&A Revision Request for CANYON LARGO UN 304 (API: 3003922687)

CAUTION: External sender. DO NOT open links or attachments from UNKNOWN senders.

The BLM approves of the addition of the CICR for the surface plug.

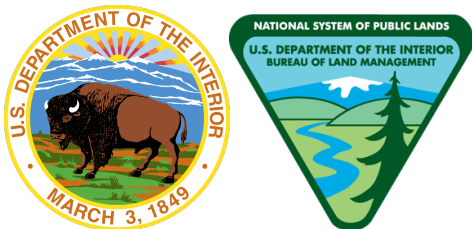
Thanks,

Matthew Kade

Petroleum Engineer | Bureau of Land Management

Farmington Field Office | 6251 College Blvd., Suite A / Farmington, NM 87402

Office: 505-564-7736



From: Joe Zimmerman <joseph.zimmerman@hilcorp.com>
Sent: Friday, August 22, 2025 9:53 AM
To: Diede, Loren, EMNRD <Loren.Diede@emnrd.nm.gov>; Kade, Matthew H <mkade@blm.gov>; Rennick, Kenneth G <krennick@blm.gov>; Lucero, Virgil S <vlucero@blm.gov>
Cc: Farmington Regulatory Techs <FarmingtonRegulatoryTechs@hilcorp.com>; Oscar Sanchez - (C) <Oscar.Sanchez@hilcorp.com>; Maestas, Joseph I <jimaestas@blm.gov>; Clay Padgett <cpadgett@hilcorp.com>; John LaMond <jlamond@hilcorp.com>; Lee Murphy <lmurphy@hilcorp.com>
Subject: RE: [EXTERNAL] P&A Revision Request for CANYON LARGO UN 304 (API: 3003922687)

All,

As discussed, we are proposing to add a retainer to this surface plug, we will squeeze below it and circulate cement to surface on the backside, WOC and bubble test, then pressure test against the CICR and fill up the 4.5" to surface. See attached updated procedure/schematic.

Let me know if you have any questions or concerns.

Thanks,

- Joe Z.

From: Diede, Loren, EMNRD <Loren.Diede@emnrd.nm.gov>
Sent: Thursday, August 21, 2025 2:48 PM
To: Kade, Matthew H <mkade@blm.gov>; Joe Zimmerman <joseph.zimmerman@hilcorp.com>; Rennick, Kenneth G <krennick@blm.gov>; Lucero, Virgil S <vlucero@blm.gov>
Cc: Farmington Regulatory Techs <FarmingtonRegulatoryTechs@hilcorp.com>; Oscar Sanchez - (C) <Oscar.Sanchez@hilcorp.com>; Maestas, Joseph I <jimaestas@blm.gov>; Clay Padgett <cpadgett@hilcorp.com>; John LaMond <jlamond@hilcorp.com>; Lee Murphy <lmurphy@hilcorp.com>
Subject: RE: [EXTERNAL] P&A Revision Request for CANYON LARGO UN 304 (API: 3003922687)

CAUTION: External sender. DO NOT open links or attachments from UNKNOWN senders.

OCD also Ok with the change.

Loren

Thank you,
Loren Diede
Petroleum Specialist III
Engineering Special Projects
Oil Conservation Division
1220 South St. Francis Drive
Santa Fe, New Mexico 87505
505-394-3582 OCD cell



From: Kade, Matthew H <mkade@blm.gov>
Sent: Thursday, August 21, 2025 1:12 PM
To: Joe Zimmerman <joseph.zimmerman@hilcorp.com>; Rennick, Kenneth G <krennick@blm.gov>; Diede, Loren, EMNRD <Loren.Diede@emnrd.nm.gov>; Lucero, Virgil S <vlucero@blm.gov>
Cc: Farmington Regulatory Techs <FarmingtonRegulatoryTechs@hilcorp.com>; Oscar Sanchez - (C) <Oscar.Sanchez@hilcorp.com>; Maestas, Joseph I <jimaestas@blm.gov>; Clay Padgett <cpadgett@hilcorp.com>; John LaMond <jlamond@hilcorp.com>; Lee Murphy <lmurphy@hilcorp.com>
Subject: Re: [EXTERNAL] P&A Revision Request for CANYON LARGO UN 304 (API: 3003922687)

The BLM approves of the proposed change to procedure.

Thanks,
Matthew Kade
Petroleum Engineer | Bureau of Land Management
Farmington Field Office | 6251 College Blvd., Suite A / Farmington, NM 87402
Office: 505-564-7736



From: Joe Zimmerman <joseph.zimmerman@hilcorp.com>
Sent: Thursday, August 21, 2025 1:06 PM
To: Rennick, Kenneth G <krennick@blm.gov>; Kade, Matthew H <mkade@blm.gov>; Diede Loren EMNRD <loren.diede@emnrd.nm.gov>; Lucero, Virgil S <vlucero@blm.gov>
Cc: Farmington Regulatory Techs <FarmingtonRegulatoryTechs@hilcorp.com>; Oscar Sanchez - (C) <Oscar.Sanchez@hilcorp.com>; Maestas, Joseph I <jimaestas@blm.gov>; Clay Padgett <cpadgett@hilcorp.com>; John LaMond <jlamond@hilcorp.com>; Lee Murphy <lmurphy@hilcorp.com>
Subject: [EXTERNAL] P&A Revision Request for CANYON LARGO UN 304 (API: 3003922687)

This email has been received from outside of DOI - Use caution before clicking on links, opening attachments, or responding.

Matthew/Loren/Virgil,

As discussed, we are proposing adding an additional plug in this well due to the bradenhead pressure we are seeing. Attached is the updated procedure showing a perf and squeeze at 700', with a retainer set at 650'. We will pump this plug and then shut the well in overnight and check the bradenhead in the morning.

Please let me know if you have any questions or concerns.

Thanks,

Joe Zimmerman
Hilcorp Energy Company
Operations Engineer – Technical Services
Joseph.zimmerman@hilcorp.com
C: 208.610.8631
O: 346.237.2054

The information contained in this email message is confidential and may be legally privileged and is intended only for the use of the individual or entity named above. If you are not an intended recipient or if you have received this message in error, you are hereby notified that any dissemination, distribution, or copy of this email is strictly prohibited. If you have received this email in error, please immediately notify us by return email or telephone if the sender's phone number is listed above, then promptly and permanently delete this message.

While all reasonable care has been taken to avoid the transmission of viruses, it is the responsibility of the recipient to ensure that the onward transmission, opening, or use of this message and any attachments will not adversely affect its systems or data. No responsibility is accepted by the company in this regard and the recipient should carry out such virus and other checks as it considers appropriate.

Priscilla Shorty

From: Kuehling, Monica, EMNRD <monica.kuehling@emnrd.nm.gov>
Sent: Monday, June 2, 2025 2:35 PM
To: Farmington Regulatory Techs
Cc: Heslop, Jason, EMNRD
Subject: [EXTERNAL] Canyon Largo Unit #304 30-039-22687

CAUTION: External sender. DO NOT open links or attachments from UNKNOWN senders.

Hello

A bradenhead test was witnessed by Inspector Jason Heslop on May 29, 2025.

The bradenhead showed 82 psi with a constant flow for full 30-minute test. Production casing continuously dropped while bradenhead was open. 5-minute shut in was 35. Direct communication was observed.

Please submit gas analysis all strings.

Test in 2019 showed 0 on bradenhead – I am showing no other test since 2016 in the well file. However, there is a gas analysis from 2022 that shows similar gas on bradenhead and production casing.

To comply with Rule 19.15.16.11, prevent waste and protect fresh water, Hilcorp Energy Company is directed to fix or plug within 90 days of the date of this email.

If you have any questions, please let me know.

Thank you

Monica Kuehling
Compliance Officer Supervisor
Deputy Oil and Gas Inspector
New Mexico Oil Conservation Division
North District
Cell Phone: 505-320-0243
Email - monica.kuehling@emnrd.nm.gov

Sante Fe Main Office
Phone: (505) 476-3441

General Information
Phone: (505) 629-6116

Online Phone Directory
<https://www.emnrd.nm.gov/ocd/contact-us>

State of New Mexico
Energy, Minerals and Natural Resources
Oil Conservation Division
1220 S. St Francis Dr.
Santa Fe, NM 87505

CONDITIONS

Action 498967

CONDITIONS

Operator: HILCORP ENERGY COMPANY 1111 Travis Street Houston, TX 77002	OGRID: 372171
	Action Number: 498967
	Action Type: [C-103] Sub. Plugging (C-103P)

CONDITIONS

Created By	Condition	Condition Date
loren.diede	None	8/26/2025