

1625 N. French Dr., Hobbs, NM 88240
 District II
 811 S. First St., Artesia, NM 88210
 District III
 1000 Rio Brazos Rd., Aztec, NM 87410
 District IV
 1220 S. St. Francis Dr., Santa Fe, NM 87505

State of New Mexico
 Energy, Minerals & Natural Resources

Oil Conservation Division
 1220 South St. Francis Dr.
 Santa Fe, NM 87505

Submit one copy to appropriate District Office

AMENDED REPORT

I. REQUEST FOR ALLOWABLE AND AUTHORIZATION TO TRANSPORT

¹ Operator name and Address XTO Energy, Inc. 6401 HOLIDAY HILL ROAD BLDG 5 MIDLAND, TX 79707		² OGRID Number 373075
		³ Reason for Filing Code/ Effective Date NW
⁴ API Number 30 - 015-46830	⁵ Pool Name WC-015 G-06 S203127G;BONE SPRING (OIL)	⁶ Pool Code 98232
⁷ Property Code 327350	⁸ Property Name BIG EDDY UNIT 5E HAN SOLO	⁹ Well Number 114H

II. ¹⁰ Surface Location

Ul or lot no.	Section	Township	Range	Lot Idn	Feet from the	North/South Line	Feet from the	East/West line	County
G	27	20S	31E		2145	North	1915	East	EDDY

¹¹ Bottom Hole Location

UL or lot no.	Section	Township	Range	Lot Idn	Feet from the	North/South line	Feet from the	East/West line	County
H	25	20S	31E		2622	North	28	East	Eddy

¹² Lse Code F	¹³ Producing Method Code P	¹⁴ Gas Connection Date	¹⁵ C-129 Permit Number	¹⁶ C-129 Effective Date	¹⁷ C-129 Expiration Date
------------------------------------	---	-----------------------------------	-----------------------------------	------------------------------------	-------------------------------------

III. Oil and Gas Transporters

¹⁸ Transporter OGRID	¹⁹ Transporter Name and Address	²⁰ O/G/W
16696	Oxy USA, Inc.	O
373073	XTO Permian Midstream	G/W

IV. Well Completion Data

²¹ Spud Date	²² Ready Date	21500 ²³ MDTD	21483 ²⁴ MBBTD	²⁵ Perforations	²⁶ DHC, MC
8/19/2020	5/28/2022	9312 TVD	9312 TVD	9,681 TO 21,397	
²⁷ Hole Size	²⁸ Casing & Tubing Size	²⁹ Depth Set	³⁰ Sacks Cement		
24	18.625 J55 87.5#	707	1365		
17.5	13.375 L80 68#	2,774	2205		
12.25	9.625 P110 40#	4,070	1255		
8.5	5.5 P110 20# 2 7/8 L80 6.5#	21,485 8238	3025		

V. Well Test Data

³¹ Date New Oil	³² Gas Delivery Date	³³ Test Date	³⁴ Test Length	³⁵ Tbg. Pressure	³⁶ Csg. Pressure
5/29/2022	5/29/2022	5/29/2022	24 hrs	451	87
³⁷ Choke Size	³⁸ Oil	³⁹ Water	⁴⁰ Gas		⁴¹ Test Method
974	974	1623	483		Flowing

⁴² I hereby certify that the rules of the Oil Conservation Division have been complied with and that the information given above is true and complete to the best of my knowledge and belief. Signature: <i>Cassie Evans</i> Printed name: Cassie Evans Title: Regulatory Analyst E-mail Address: cassie.evans@exxonmobil.com Date: 06/06/22	OIL CONSERVATION DIVISION Approved by:
	Title:
	Approval Date:
	Phone: 432.218.3671

District I
1625 N. French Dr., Hobbs, NM 88240
Phone: (575) 393-6161 Fax: (575) 393-0720

District II
811 S. First St., Artesia, NM 88210
Phone: (575) 748-1283 Fax: (575) 748-9720

District III
1000 Rio Brazos Road, Aztec, NM 87410
Phone: (505) 334-6178 Fax: (505) 334-6170

District IV
1220 S. St. Francis Dr., Santa Fe, NM 87505
Phone: (505) 476-3460 Fax: (505) 476-3462

State of New Mexico
Energy, Minerals & Natural Resources Department
OIL CONSERVATION DIVISION
1220 South St. Francis Dr.
Santa Fe, NM 87505

Form C-102
Revised August 1, 2011
Submit one copy to appropriate
District Office

AMENDED REPORT

WELL LOCATION AND ACREAGE DEDICATION PLAT AS-DRILLED PLAT

¹ API Number 30-015-46830		² Pool Code 98232		³ Pool Name WC-015 G-06 S203127G; BONE SPRING	
⁴ Property Code 327350		⁵ Property Name BIG EDDY UNIT 5E HAN SOLO			⁶ Well Number 114H
⁷ OGRID No. 373075		⁸ Operator Name XTO PERMIAN OPERATING, LLC.			⁹ Elevation 3,525'

¹⁰ Surface Location

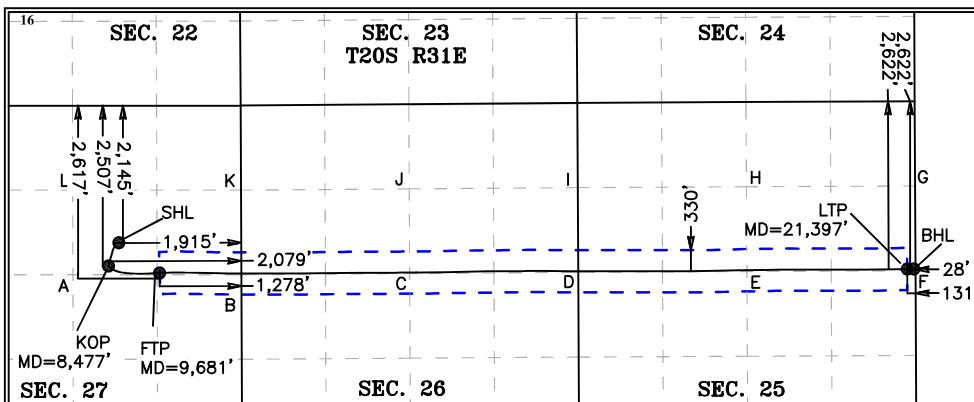
UL or lot no.	Section	Township	Range	Lot Idn	Feet from the	North/South line	Feet from the	East/West line	County
G	27	20 S	31 E		2,145	NORTH	1,915	EAST	EDDY

¹¹ Bottom Hole Location If Different From Surface

UL or lot no.	Section	Township	Range	Lot Idn	Feet from the	North/South line	Feet from the	East/West line	County
H	25	20 S	31 E		2,622	NORTH	28	EAST	EDDY

¹² Dedicated Acres 400	¹³ Joint or Infill	¹⁴ Consolidation Code	¹⁵ Order No.
--------------------------------------	-------------------------------	----------------------------------	-------------------------

No allowable will be assigned to this completion until all interests have been consolidated or a non-standard unit has been approved by the division. NOTE: AS-DRILLED BOTTOM HOLE PLOTTED FROM DATA FURNISHED BY XTO ENERGY.



¹⁷ OPERATOR CERTIFICATION
I hereby certify that the information contained herein is true and complete to the best of my knowledge and belief, and that this organization either owns a working interest or unleased mineral interest in the land including the proposed bottom hole location or has a right to drill this well at this location pursuant to a contract with an owner of such a mineral or working interest, or to a voluntary pooling agreement or a compulsory pooling order heretofore entered by the division.

Cassie Evans 06/06/22
Signature Date

Cassie Evans
Printed Name

cassie.evans@exxonmobil.com
E-mail Address

SHL (NAD83 NME)	LTP (NAD83 NME)	SHL (NAD27 NME)	LTP (NAD27 NME)
Y = 562,564.7 X = 688,836.6 LAT. = 32.545637 °N LONG. = 103.854657 °W	Y = 562,155.4 X = 701,187.9 LAT. = 32.544352 °N LONG. = 103.814582 °W	Y = 562,503.1 X = 647,656.7 LAT. = 32.545516 °N LONG. = 103.854157 °W	Y = 562,093.7 X = 660,008.2 LAT. = 32.544232 °N LONG. = 103.814082 °W
KOP (NAD83 NME)	BHL (NAD83 NME)	KOP (NAD27 NME)	BHL (NAD27 NME)
Y = 562,202.4 X = 688,674.1 LAT. = 32.544643 °N LONG. = 103.855190 °W	Y = 562,156.1 X = 701,290.9 LAT. = 32.544353 °N LONG. = 103.814248 °W	Y = 562,140.7 X = 647,494.5 LAT. = 32.544522 °N LONG. = 103.854689 °W	Y = 562,094.5 X = 660,111.0 LAT. = 32.544233 °N LONG. = 103.813748 °W
FTP (NAD83 NME)	FTP (NAD27 NME)		
Y = 562,092.7 X = 689,475.3 LAT. = 32.544331 °N LONG. = 103.852592 °W	Y = 562,031.0 X = 648,295.7 LAT. = 32.544211 °N LONG. = 103.852090 °W		
CORNER COORDINATES (NAD83 NME)		CORNER COORDINATES (NAD27 NME)	
A - Y = 562,065.7 N, X = 688,117.5 E	B - Y = 562,065.6 N, X = 690,753.6 E	A - Y = 562,004.2 N, X = 646,937.6 E	B - Y = 562,004.0 N, X = 649,573.7 E
C - Y = 562,084.1 N, X = 693,392.8 E	D - Y = 562,102.7 N, X = 696,032.5 E	C - Y = 562,022.5 N, X = 652,212.9 E	D - Y = 562,041.1 N, X = 654,852.6 E
E - Y = 562,115.5 N, X = 698,676.3 E	F - Y = 562,128.3 N, X = 701,319.2 E	E - Y = 562,053.9 N, X = 657,496.4 E	F - Y = 562,066.7 N, X = 660,139.3 E
G - Y = 563,453.2 N, X = 701,312.0 E	H - Y = 563,440.6 N, X = 698,668.7 E	G - Y = 563,391.6 N, X = 660,132.1 E	H - Y = 563,379.0 N, X = 657,488.8 E
I - Y = 563,427.3 N, X = 696,025.1 E	J - Y = 563,407.4 N, X = 693,386.3 E	I - Y = 563,365.7 N, X = 654,845.2 E	J - Y = 563,345.8 N, X = 652,206.4 E
K - Y = 563,387.7 N, X = 690,748.3 E	L - Y = 563,387.7 N, X = 688,114.1 E	K - Y = 563,326.1 N, X = 649,568.4 E	L - Y = 563,326.1 N, X = 646,934.2 E

¹⁸ SURVEYOR CERTIFICATION
I hereby certify that the well location shown on this plat was plotted from field notes of actual surveys made by me or under my supervision, and that the same is true and correct to the best of my belief.

05-16-2022
Date of Survey

Signature and Seal of Professional Surveyor:

Mark Dillon Harp
MARK DILLON HARP 23786
Certificate Number

LS 2019041005



Intent As Drilled

API #
30-015-46830

Operator Name: XTO PERMIAN OPERATING, LLC.	Property Name: BIG EDDY UNIT 5E HAN SOLO	Well Number 114H
---	---	---------------------

Kick Off Point (KOP)

UL G	Section 27	Township 20S	Range 31E	Lot	Feet 2,507	From N/S FNL	Feet 2,079	From E/W FEL	County EDDY
Latitude 32.544643					Longitude 103.855190				NAD 83

First Take Point (FTP)

UL H	Section 27	Township 20S	Range 31E	Lot	Feet 2,617	From N/S FNL	Feet 1,278	From E/W FEL	County EDDY
Latitude 32.544331					Longitude 103.852592				NAD 83

Last Take Point (LTP)

UL H	Section 25	Township 20S	Range 31E	Lot	Feet 2,622	From N/S FNL	Feet 131	From E/W FEL	County EDDY
Latitude 32.544352					Longitude 103.814582				NAD 83

Is this well the defining well for the Horizontal Spacing Unit? Yes

Is this well an infill well? No

If infill is yes please provide API if available, Operator Name and well number for Defining well for Horizontal Spacing Unit.

API #

Operator Name:	Property Name:	Well Number
----------------	----------------	-------------

KZ 06/29/2018



XTO Big Eddy Unit 5E Han Solo 114H 0 to 21500' MD Survey Geodetic Report (Def Survey)



Report Date: September 13, 2020 - 03:19 PM
Client: XTO
Field: NM Eddy County (NAD 27)
Structure / Slot: XTO Big Eddy Unit 5E Han Solo Pad / XTO Big Eddy Unit 5E Han Solo 114H
Well: XTO Big Eddy Unit 5E Han Solo 114H
Borehole: Original Borehole
UWI / API#: Unknown / 30-015-46830
Survey Name: XTO Big Eddy Unit 5E Han Solo 114H 0 to 21500' MD
Survey Date: August 17, 2020
Tort / AHD / DDI / ERD Ratio: 242.188' / 13132.129 ft / 6.866 / 1.410
Coordinate Reference System: NAD27 New Mexico State Plane, Eastern Zone, US Feet
Location Lat / Long: N 32° 32' 43.85821", W 103° 51' 14.96509"
Location Grid N/E Y/X: N 562503.110 ftUS, E 647656.700 ftUS
CRS Grid Convergence Angle: 0.2578 °
Grid Scale Factor: 0.99993406
Version / Patch: 2.10.820.4

Survey / DLS Computation: Minimum Curvature / Lubinski
Vertical Section Azimuth: 91.921 ° (Grid North)
Vertical Section Origin: 0.000 ft, 0.000 ft
TVD Reference Datum: KB = 31ft
TVD Reference Elevation: 3556.000 ft above MSL
Seabed / Ground Elevation: 3525.000 ft above MSL
Magnetic Declination: 7.113 °
Total Gravity Field Strength: 998.4856mgn (9.80665 Based)
Gravity Model: GARM
Total Magnetic Field Strength: 47857.000 nT
Magnetic Dip Angle: 60.26 °
Declination Date: August 17, 2020
Magnetic Declination Model: IFR1+MS
North Reference: Grid North
Grid Convergence Used: 0.2560 °
Total Corr Mag North->Grid North: 6.8570 °
Local Coord Referenced To: Well Head

Comments	MD (ft)	Incl (°)	Azim Grid (°)	TVD (ft)	VSEC (ft)	NS (ft)	EW (ft)	DLS (°/100ft)	Northing (ftUS)	Easting (ftUS)	Latitude (°)	Longitude (°)	Closure (ft)	Closure Azimuth (°)
Surface	0.00	0.00	0.00	0.00	0.00	0.00	0.00	N/A	562503.11	647656.70	32.545516	-103.854157	0.00	0.00
	134.00	0.58	239.13	134.00	-0.57	-0.35	-0.58	0.43	562502.76	647656.12	32.545515	-103.854159	0.68	239.13
	222.00	0.40	236.68	221.99	-1.20	-0.75	-1.22	0.21	562502.36	647655.48	32.545514	-103.854161	1.43	238.60
	312.00	0.38	246.00	311.99	-1.72	-1.04	-1.76	0.07	562502.07	647654.94	32.545513	-103.854163	2.04	239.39
	402.00	0.13	227.58	401.99	-2.06	-1.23	-2.10	0.29	562501.88	647654.60	32.545513	-103.854164	2.44	239.70
	492.00	0.09	317.54	491.99	-2.18	-1.25	-2.23	0.18	562501.86	647654.47	32.545513	-103.854164	2.55	240.77
	583.00	0.49	318.30	582.99	-2.50	-0.90	-2.53	0.44	562502.21	647654.17	32.545514	-103.854165	2.69	250.39
	663.00	0.28	288.00	662.99	-2.93	-0.59	-2.95	0.36	562502.52	647653.75	32.545515	-103.854167	3.01	258.74
18.625" Casing	707.00	0.34	298.50	706.99	-3.15	-0.49	-3.17	0.19	562502.62	647653.53	32.545515	-103.854167	3.20	261.18
	787.00	0.47	309.88	786.99	-3.62	-0.17	-3.63	0.19	562502.94	647653.07	32.545516	-103.854169	3.63	267.36
	878.00	0.37	314.66	877.98	-4.13	0.28	-4.12	0.12	562503.39	647652.58	32.545517	-103.854170	4.13	273.86
	969.00	0.33	277.18	968.98	-4.61	0.52	-4.59	0.25	562503.63	647652.11	32.545518	-103.854172	4.62	278.43
	1063.00	0.02	110.22	1062.98	-4.86	0.55	-4.84	0.37	562503.66	647651.86	32.545518	-103.854173	4.87	276.43
	1153.00	0.14	66.67	1152.98	-4.75	0.58	-4.73	0.14	562503.69	647651.97	32.545518	-103.854172	4.76	277.04
	1244.00	0.49	348.07	1243.98	-4.74	1.01	-4.71	0.53	562504.12	647651.99	32.545519	-103.854172	4.81	282.10
	1334.00	1.05	56.58	1333.97	-4.16	1.84	-4.10	1.09	562504.95	647652.60	32.545521	-103.854170	4.49	294.17
	1425.00	0.09	73.98	1424.97	-3.41	2.32	-3.33	1.06	562505.43	647653.37	32.545523	-103.854168	4.06	304.82
	1515.00	0.69	156.92	1514.96	-3.11	1.84	-3.05	0.76	562504.95	647653.65	32.545521	-103.854167	3.56	301.07
	1605.00	0.77	128.04	1604.96	-2.40	0.97	-2.36	0.41	562504.08	647654.34	32.545519	-103.854165	2.55	292.27
	1695.00	0.76	120.28	1694.95	-1.38	0.29	-1.37	0.12	562503.40	647655.33	32.545517	-103.854161	1.40	282.11
	1785.00	0.78	85.64	1784.94	-0.25	0.04	-0.25	0.51	562503.15	647656.45	32.545516	-103.854158	0.25	279.27
	1876.00	1.22	73.11	1875.93	1.29	0.37	1.30	0.54	562503.48	647658.00	32.545517	-103.854153	1.35	74.15
	1966.00	1.65	55.37	1965.90	3.23	1.38	3.28	0.68	562504.49	647659.98	32.545520	-103.854146	3.56	67.14
	2056.00	0.56	40.71	2055.88	4.55	2.45	4.63	1.24	562505.56	647661.33	32.545523	-103.854142	5.24	62.11
	2147.00	0.21	265.76	2146.88	4.66	2.78	4.76	0.80	562505.89	647661.46	32.545524	-103.854141	5.51	59.72
	2237.00	0.72	235.07	2236.88	4.05	2.44	4.13	0.61	562505.55	647660.83	32.545523	-103.854144	4.80	59.41
	2328.00	0.67	280.45	2327.87	3.06	2.21	3.14	0.59	562505.32	647659.84	32.545522	-103.854147	3.84	54.83
	2418.00	0.25	249.32	2417.87	2.36	2.24	2.44	0.53	562505.35	647659.14	32.545522	-103.854149	3.31	47.45
	2508.00	0.22	43.66	2507.87	2.29	2.29	2.37	0.51	562505.40	647659.07	32.545522	-103.854149	3.30	45.98
	2599.00	0.60	90.06	2598.87	2.89	2.42	2.97	0.52	562505.53	647659.67	32.545523	-103.854147	3.83	50.84
	2689.00	0.65	83.89	2688.86	3.86	2.47	3.95	0.09	562505.58	647660.65	32.545523	-103.854144	4.66	57.94
13.375" Casing	2774.00	0.17	126.05	2773.86	4.44	2.45	4.53	0.63	562505.56	647661.23	32.545523	-103.854142	5.15	61.56
	2896.00	0.69	240.88	2895.86	3.96	1.99	4.03	0.63	562505.10	647660.73	32.545522	-103.854144	4.49	63.69
	2986.00	3.06	251.78	2985.80	1.24	0.98	1.27	2.65	562504.09	647657.97	32.545519	-103.854153	1.60	52.49
	3077.00	4.51	256.13	3076.60	-4.49	-0.64	-4.51	1.62	562502.47	647652.19	32.545514	-103.854172	4.55	261.91
	3167.00	5.27	260.23	3166.27	-11.94	-2.19	-12.02	0.93	562500.92	647644.68	32.545510	-103.854196	12.22	259.67
	3257.00	7.33	266.70	3255.73	-21.70	-3.22	-21.82	2.42	562499.89	647634.88	32.545508	-103.854228	22.06	261.60
	3348.00	7.32	268.45	3345.98	-33.27	-3.71	-33.41	0.25	562499.40	647623.29	32.545506	-103.854265	33.62	263.66
	3438.00	7.31	269.43	3435.25	-44.71	-3.93	-44.87	0.14	562499.18	647611.83	32.545506	-103.854303	45.04	265.00
	3528.00	5.07	271.13	3524.72	-54.41	-3.90	-54.57	2.50	562499.21	647602.13	32.545506	-103.854334	54.71	265.91
	3618.00	3.15	270.60	3614.48	-60.86	-3.80	-61.02	2.13	562499.31	647595.68	32.545506	-103.854355	61.14	266.44
	3709.00	0.97	260.94	3705.42	-64.12	-3.90	-64.28	2.42	562499.22	647592.42	32.545506	-103.854366	64.40	266.53
	3799.00	0.82	267.21	3795.41	-65.51	-4.05	-65.68	0.20	562499.06	647591.02	32.545506	-103.854370	65.80	266.47
	3890.00	1.07	254.84	3886.40	-66.97	-4.30	-67.15	0.35	562498.81	647589.55	32.545505	-103.854375	67.29	266.34
	3980.00	0.02	299.96	3976.39	-67.79	-4.51	-67.98	1.17	562498.60	647588.73	32.545505	-103.854378	68.12	266.20
	4005.00	0.54	89.00	4001.39	-67.67	-4.51	-67.86	2.23	562498.60	647588.84	32.545505	-103.854377	67.01	266.20
9.625" Casing	4085.00	0.91	96.83	4081.38	-66.66	-4.58	-66.85	0.48	562498.53	647588.85	32.545504	-103.854374	68.01	266.20
	4110.00	1.03	98.11	4106.38	-66.24	-4.63	-66.43	0.48	562498.48	647590.27	32.545504	-103.854373	66.59	266.01
	4200.00	1.07	90.21	4196.37	-64.60	-4.75	-64.79	0.17	562498.36	647591.91	32.545504	-103.854367	64.97	265.81
	4290.00	1.00	90.39	4286.35	-62.97	-4.76	-63.17	0.08	562498.35	647593.54	32.545504	-103.854362	63.34	265.69
	4380.00	0.78	92.63	4376.34	-61.57	-4.79	-61.77	0.25	562498.32	647594.94	32.545504	-103.854357	61.95	265.56
	4471.00	0.56	100.44	4467.33	-60.51	-4.90	-60.71	0.26	562498.21	647595.99	32.545503	-103.854354	60.91	265.39
	4561.00	0.44	111.97	4557.33	-59.75	-5.11	-59.96	0.17	562498.00	647596.74	32.545503	-103.854352	60.18	265.13
	4651.00	0.55	130.36	4647.33	-59.09	-5.52	-59.31	0.21	562497.59	647597.39	32.545502	-103.854350	59.57	264.68
	4742.00	0.62	127.10	4738.32	-58.35	-6.10	-58.59	0.09	562497.01	647598.12	32.545500	-103.854347	58.90	264.06
	4832.00	0.64	131.12	4828.32	-57.56	-6.72	-57.82	0.05	562496.39	647598.89	32.545498	-103.854345	58.21	263.37
	4922.00	0.60	132.68	4918.31	-56.81	-7.37	-57.09	0.05	562495.74	647599.61	32.545497	-103.854342	57.57	262.64
	5012.00	1.61	187.46	5008.30	-56.58	-8.95	-56.91	1.51	562494.16	647599.79	32.545492	-103.854342	57.61	261.07
	5103.00	3.51	188.14	5099.20	-57.00	-12.97	-57.47	2.09	562490.14	647599.23	32.545481	-103.854344	58.92	257.28
	5193.00	5.41	189.80	5188.92	-57.88	-19.88	-58.58	2.12	562483.23	647598.12	32.545482	-103.854347	61.86	251.26
	5284.00	5.58	189.80	5279.51	-59.08	-28.47	-60.07	0.19	562474.65	647596.64	32.545439	-103.854352	66.47	244.64
	5374.00	5.12	187.85	5369.11	-60.09	-36.76	-61.36	0.55	562466.36	647595.35	32.545416	-103.854357	71.53	239.08
	5464.00	6.58	190.87	5458.64	-61.31	-45.80	-62.88	1.66	562457.31	647593.82	32.545391	-103.854362	77.79	233.93
	5554.00	6.54	194.15	5548.05	-63.20	-55.83	-65.11	0.42	562447.28	647591.60	32.545364	-103.854369	85.77	229.38
	5644.00	6.90	210.76	5637.44	-66.89	-65.45	-69.12	2.19	562437.66	647587.58	32.545337	-103.854382	95.19	225.56
	5735.00	7.00	212.79	5727.78	-72.37	-74.81	-74.92	0.29	562428.31	647581.78	32.545311	-103.854401	105.88	225.04
	5825.00	6.93	213.73											

Comments	MD (ft)	Incl (°)	Azim Grid (°)	TVD (ft)	VSEC (ft)	NS (ft)	EW (ft)	DLS (°/100ft)	Northing (ftUS)	Easting (ftUS)	Latitude (°)	Longitude (°)	Closure (ft)	Closure Azimuth (°)
	7721.00	6.12	214.37	7701.48	-133.63	-281.26	-143.14	1.38	562221.86	647513.57	32.544745	-103.854626	315.59	206.97
	7811.00	4.95	205.27	7791.06	-137.74	-288.74	-147.50	1.62	562214.39	647509.21	32.544724	-103.854640	324.23	207.06
	7902.00	5.21	196.62	7881.70	-140.35	-296.25	-150.36	0.89	562206.88	647506.35	32.544704	-103.854649	332.22	206.91
	7992.00	6.30	189.06	7971.25	-142.00	-305.04	-152.31	1.47	562198.09	647504.40	32.544680	-103.854656	340.95	206.53
	8082.00	8.00	188.56	8060.54	-143.34	-316.12	-154.02	1.90	562187.02	647502.69	32.544662	-103.854661	351.64	205.98
	8172.00	8.14	188.63	8149.65	-144.81	-328.82	-155.91	0.14	562174.52	647500.80	32.544615	-103.854668	363.73	205.38
	8263.00	7.41	191.18	8239.81	-146.50	-340.74	-158.01	0.89	562162.39	647498.70	32.544582	-103.854675	375.60	204.88
	8353.00	5.60	200.26	8329.23	-148.82	-350.56	-160.66	2.31	562152.58	647496.05	32.544555	-103.854683	385.62	204.62
	8417.00	5.05	196.16	8392.96	-150.49	-356.19	-162.52	1.04	562146.94	647494.19	32.544539	-103.854690	391.52	204.53
	8463.00	5.65	192.49	8438.76	-151.41	-360.35	-163.58	1.50	562142.79	647493.13	32.544528	-103.854693	395.74	204.42
	8554.00	13.93	136.65	8528.51	-144.41	-372.72	-156.99	12.88	562130.42	647499.72	32.544494	-103.854672	404.43	202.84
	8644.00	24.24	125.90	8613.47	-121.31	-391.47	-134.51	12.05	562111.67	647522.20	32.544442	-103.854599	413.93	199.96
	8734.00	31.99	121.46	8692.80	-85.19	-414.78	-99.15	8.91	562088.35	647557.56	32.544377	-103.854485	426.47	193.44
FTP [64° FSL, 660° FWL]	8812.00	36.00	113.32	8757.49	-45.84	-434.66	-60.44	7.77	562068.48	647596.27	32.544322	-103.854359	438.84	187.92
	8824.00	36.66	112.21	8767.16	-39.19	-437.41	-53.88	7.77	562065.73	647602.82	32.544315	-103.854338	440.72	187.02
	8915.00	40.70	103.98	8838.23	15.36	-454.87	0.12	7.18	562048.28	647656.82	32.544266	-103.854163	454.87	179.98
	9005.00	44.26	100.08	8904.61	75.18	-467.46	59.55	4.92	562035.68	647716.24	32.544231	-103.853971	471.24	172.74
	9096.00	47.96	94.54	8967.71	140.42	-475.70	124.55	5.98	562027.45	647781.24	32.544207	-103.853760	491.73	165.33
	9185.00	51.98	92.86	9024.95	208.52	-480.06	192.53	4.74	562023.08	647849.22	32.544194	-103.853539	517.23	158.15
	9275.00	54.12	91.36	9079.05	280.43	-482.70	264.40	2.73	562020.44	647921.09	32.544186	-103.853306	550.37	151.29
	9365.00	60.10	89.72	9127.90	355.94	-483.37	339.94	6.82	562019.77	647996.61	32.544183	-103.853061	599.94	144.88
	9456.00	67.10	87.20	9168.34	437.24	-481.13	421.35	8.08	562022.01	648078.03	32.544189	-103.852779	639.55	138.79
	9546.00	73.90	87.38	9198.37	521.75	-477.12	506.05	7.56	562026.02	648162.71	32.544198	-103.852522	695.51	133.31
	9636.00	82.03	87.85	9217.12	609.45	-473.47	593.92	9.05	562029.67	648250.58	32.544207	-103.852237	759.55	128.56
	9727.00	89.32	88.63	9233.97	699.95	-470.69	684.56	8.06	562032.45	648341.21	32.544214	-103.851943	830.76	124.51
	9817.00	89.34	87.86	9225.03	789.75	-467.93	774.51	0.86	562035.21	648431.15	32.544220	-103.851651	904.89	121.14
	9907.00	89.67	89.35	9225.80	879.60	-465.74	864.47	1.70	562037.40	648521.12	32.544225	-103.851359	981.95	118.31
	10023.00	90.34	90.32	9225.79	995.52	-465.41	980.47	1.02	562037.73	648637.11	32.544225	-103.850982	1085.32	115.39
	10117.00	90.24	90.23	9225.32	1089.48	-465.86	1074.47	0.14	562037.28	648731.10	32.544222	-103.850677	1171.11	113.44
	10208.00	90.25	91.66	9224.93	1180.46	-467.36	1165.45	1.57	562035.78	648822.07	32.544217	-103.850382	1255.67	111.85
	10298.00	90.49	92.32	9224.35	1270.46	-470.48	1255.40	0.78	562032.66	648912.01	32.544207	-103.850090	1340.66	110.54
	10389.00	90.65	91.74	9223.44	1361.46	-473.71	1346.34	0.66	562029.43	649002.94	32.544197	-103.849795	1427.24	109.38
	10479.00	90.87	90.50	9222.25	1451.44	-475.47	1436.31	1.40	562027.68	649092.91	32.544191	-103.849503	1512.96	108.32
	10569.00	89.63	89.86	9221.86	1541.39	-475.75	1526.30	1.55	562027.39	649182.90	32.544190	-103.849211	1598.73	107.31
	10660.00	89.35	90.14	9222.67	1632.34	-475.75	1617.30	0.44	562027.39	649273.89	32.544188	-103.848916	1685.82	106.39
	10750.00	89.35	90.39	9223.69	1722.29	-476.17	1707.29	0.28	562026.98	649363.88	32.544186	-103.848624	1772.45	105.58
	10840.00	89.03	90.39	9224.96	1812.25	-476.78	1797.28	0.36	562026.36	649453.86	32.544183	-103.848332	1859.45	104.86
	10931.00	89.36	90.25	9226.24	1903.21	-477.29	1888.27	0.39	562025.86	649544.84	32.544181	-103.848037	1947.66	104.19
	11021.00	89.17	89.91	9227.39	1993.15	-477.41	1978.26	0.43	562025.73	649634.83	32.544179	-103.847745	2035.06	103.57
	11111.00	89.02	90.08	9228.81	2083.09	-477.40	2068.25	0.25	562025.74	649724.81	32.544178	-103.847453	2122.64	103.00
	11202.00	89.07	90.22	9230.33	2174.04	-477.64	2159.24	0.16	562025.50	649815.79	32.544176	-103.847158	2211.44	102.47
	11292.00	89.27	90.64	9231.63	2264.00	-478.32	2249.23	0.52	562024.83	649905.78	32.544173	-103.846866	2299.53	102.01
	11382.00	89.31	90.21	9232.75	2353.96	-478.99	2339.22	0.48	562024.16	649995.76	32.544170	-103.846574	2387.75	101.57
	11472.00	89.15	89.90	9233.96	2443.90	-479.07	2429.21	0.39	562024.07	650085.75	32.544169	-103.846282	2476.00	101.16
	11563.00	89.39	89.65	9235.12	2534.83	-478.71	2520.20	0.38	562024.43	650176.73	32.544169	-103.845986	2565.27	100.76
	11653.00	88.93	89.86	9236.44	2624.76	-478.33	2610.19	0.56	562024.81	650266.71	32.544169	-103.845694	2653.66	100.38
	11743.00	89.25	89.74	9237.87	2714.68	-478.02	2700.18	0.38	562025.13	650356.70	32.544169	-103.845402	2742.16	100.04
	11834.00	88.92	89.10	9239.32	2805.58	-477.09	2791.16	0.79	562026.05	650447.67	32.544170	-103.845107	2831.64	99.70
	11924.00	88.93	89.53	9241.20	2895.47	-476.02	2881.14	0.55	562027.12	650537.64	32.544172	-103.844815	2920.19	99.38
	12015.00	89.93	90.28	9243.10	2986.39	-475.87	2972.12	0.87	562027.27	650628.61	32.544171	-103.844520	3009.97	99.10
	12105.00	90.44	89.80	9245.60	3076.34	-475.93	3062.11	1.76	562027.21	650718.60	32.544170	-103.844228	3099.86	98.83
	12196.00	90.95	89.63	9247.49	3167.26	-475.24	3153.10	0.76	562027.90	650809.59	32.544171	-103.843933	3188.71	98.57
	12286.00	91.41	89.39	9249.64	3257.15	-474.23	3243.08	0.52	562028.91	650899.56	32.544172	-103.843641	3277.57	98.32
	12377.00	91.58	89.19	9252.92	3347.90	-471.99	3424.00	0.14	562031.15	651080.47	32.544176	-103.843054	3466.38	97.85
	12467.00	91.53	89.04	9253.48	3527.75	-470.60	3513.96	0.18	562032.54	651170.42	32.544179	-103.842762	3555.33	97.63
	12557.00	90.64	89.12	9251.77	3617.63	-469.16	3603.93	0.99	562033.98	651260.38	32.544182	-103.842470	3634.34	97.42
	12647.00	89.39	89.05	9252.53	3707.51	-467.72	3693.91	2.50	562035.42	651350.36	32.544184	-103.842178	3723.40	97.22
	12737.00	88.04	89.68	9253.34	3797.37	-466.72	3783.86	0.80	562036.42	651440.30	32.544186	-103.841886	3812.53	97.03
	12827.00	87.13	89.84	9259.17	3888.23	-466.34	3874.78	1.02	562036.80	651531.21	32.544186	-103.841591	3902.74	96.86
	12918.00	87.15	89.90	9243.66	3978.06	-466.14	3964.66	0.07	562037.00	651621.09	32.544185	-103.841299	3991.97	96.71
	13008.00	87.93	90.05	9247.52	4067.92	-466.10	4054.58	0.88	562037.04	651711.00	32.544184	-103.841007	4081.28	96.56
	13188.00	88.01	90.16	9250.71	4157.82	-466.26	4144.52	0.15	562036.88	651800.94	32.544183	-103.840715	4170.67	96.42
	13279.00	87.73	89.92	9254.09	4248.71	-466.33	4235.46	0.41	562036.81	651891.87	32.544181	-103.840420	4261.05	96.28
	13369.00	88.07	89.96	9257.39	4338.59	-466.23	4325.40	0.38	562036.91	651981.81	32.544180	-103.840129	4350.45	96.15
	13459.00	87.90	89.34	9260.56	4428.47	-465.88	4415.34	0.71	562037.46	652071.74	32.544181	-103.839837	4439.83	96.02
	13549.00	87.84	89.80	9263.90	4518.33	-465.08	4505.28	0.52	562038.13	652161.67	32.544181	-103.839545	4529.21	95.89
	13640.00	88.47	89.08	9266.83	4609.20	-464.12	4596.22	1.05	562039.02	652252.61	32.544183	-103.839250	4619.60	95.77
	13730.00	89.87	89.81	9268.14	4699.10	-463.25	4686.21	1.75	562039.89	652342.59	32.544184	-103.838958	4709.05	95.65
	13820.00	90.82	88.95	926										

Comments	MD (ft)	Incl (°)	Azim Grid (°)	TVD (ft)	VSEC (ft)	NS (ft)	EW (ft)	DLS (°/100ft)	Northing (ftUS)	Easting (ftUS)	Latitude (°)	Longitude (°)	Closure (ft)	Closure Azimuth (°)
	17884.00	89.81	90.32	9294.63	8849.40	-441.56	8839.57	0.46	562081.58	656495.67	32.544190	-103.825480	8850.59	92.86
	17974.00	88.92	90.13	9296.62	8939.36	-441.91	8929.56	1.01	562081.23	656585.66	32.544188	-103.825188	8940.49	92.83
	18065.00	89.02	90.22	9297.26	9030.30	-442.19	9020.55	0.15	562080.95	656676.63	32.544186	-103.824893	9031.38	92.81
	18155.00	89.18	90.26	9298.67	9120.25	-442.57	9110.54	0.18	562080.57	656766.62	32.544184	-103.824601	9121.28	92.78
	18245.00	89.41	89.35	9299.78	9210.18	-442.26	9200.53	1.04	562080.88	656856.60	32.544183	-103.824309	9211.15	92.75
	18336.00	90.64	89.15	9299.74	9301.08	-441.07	9291.52	1.37	562082.07	656947.59	32.544185	-103.824014	9301.98	92.72
	18426.00	90.02	88.49	9299.22	9390.95	-439.21	9381.50	1.01	562083.92	657037.56	32.544189	-103.823722	9391.77	92.68
	18516.00	90.88	88.43	9298.52	9480.78	-436.80	9471.46	0.96	562086.34	657127.52	32.544195	-103.823430	9481.53	92.64
	18606.00	91.00	88.51	9297.04	9570.60	-434.39	9561.42	0.16	562088.75	657217.47	32.544200	-103.823138	9571.28	92.60
	18697.00	89.82	88.36	9296.39	9661.43	-431.91	9652.38	1.31	562071.23	657308.42	32.544206	-103.822843	9662.04	92.56
	18787.00	89.78	88.58	9296.70	9751.27	-429.51	9742.35	0.25	562073.63	657398.38	32.544211	-103.822551	9751.81	92.52
	18877.00	89.47	89.23	9297.29	9841.14	-427.79	9832.33	0.80	562075.35	657488.36	32.544215	-103.822259	9841.63	92.49
	18968.00	89.38	89.25	9298.20	9932.04	-426.58	9923.31	0.10	562076.56	657579.34	32.544217	-103.821964	9932.48	92.46
	19058.00	89.86	89.12	9298.80	10021.93	-425.30	10013.30	0.55	562077.84	657669.32	32.544219	-103.821672	10022.33	92.43
	19148.00	89.78	88.65	9299.08	10111.80	-423.55	10103.28	0.53	562079.59	657759.30	32.544223	-103.821380	10112.16	92.40
	19239.00	89.97	88.99	9299.28	10202.67	-421.67	10194.26	0.43	562081.47	657850.27	32.544227	-103.821084	10202.98	92.37
	19329.00	88.81	89.22	9300.24	10292.55	-420.27	10284.25	1.31	562082.87	657940.25	32.544229	-103.820792	10292.83	92.34
	19420.00	89.25	89.99	9301.78	10383.47	-419.64	10375.23	0.97	562083.50	658031.23	32.544230	-103.820497	10383.71	92.32
	19510.00	89.51	90.34	9302.76	10473.42	-419.90	10465.23	0.48	562083.24	658121.21	32.544228	-103.820205	10473.65	92.30
	19600.00	90.18	90.37	9303.00	10563.38	-420.46	10555.22	0.75	562082.68	658211.21	32.544225	-103.819913	10563.59	92.28
	19691.00	90.25	89.89	9302.66	10654.34	-420.66	10646.22	0.53	562082.48	658302.20	32.544224	-103.819621	10654.53	92.26
	19781.00	90.39	89.85	9302.15	10744.28	-420.46	10736.22	0.16	562082.68	658392.19	32.544223	-103.819326	10744.45	92.24
	19871.00	90.31	89.31	9301.60	10834.20	-419.80	10826.22	0.61	562083.34	658482.18	32.544224	-103.819034	10834.35	92.22
	19962.00	89.34	89.98	9301.88	10925.13	-419.24	10917.21	1.30	562083.90	658573.17	32.544224	-103.818739	10925.26	92.20
	20052.00	89.47	89.94	9302.82	11015.07	-419.17	11007.21	0.15	562083.97	658663.16	32.544223	-103.818444	11015.19	92.18
	20142.00	89.86	90.16	9303.34	11105.02	-419.25	11097.20	0.50	562083.89	658753.15	32.544221	-103.818154	11105.12	92.16
	20233.00	89.82	89.78	9303.60	11195.97	-419.20	11188.20	0.42	562083.93	658844.14	32.544220	-103.817859	11195.05	92.15
	20323.00	89.61	89.83	9304.05	11285.91	-418.90	11278.20	0.24	562084.24	658934.14	32.544220	-103.817567	11285.98	92.13
	20414.00	89.55	90.44	9304.71	11376.86	-419.11	11369.20	0.67	562084.03	659025.13	32.544218	-103.817272	11376.92	92.11
	20504.00	89.54	90.12	9305.43	11466.82	-419.55	11459.20	0.36	562083.59	659115.12	32.544216	-103.816980	11466.87	92.10
	20594.00	89.72	89.83	9306.01	11556.77	-419.51	11549.19	0.38	562083.63	659205.11	32.544215	-103.816688	11556.81	92.08
	20685.00	89.83	89.50	9306.37	11647.69	-418.98	11640.19	0.38	562084.16	659296.10	32.544215	-103.816393	11647.73	92.06
	20775.00	89.52	89.58	9306.88	11737.61	-418.26	11730.19	0.36	562084.88	659386.09	32.544216	-103.816101	11737.64	92.04
	20865.00	89.48	89.48	9307.66	11827.53	-417.52	11820.18	0.12	562085.62	659476.08	32.544217	-103.815809	11827.55	92.02
	20955.00	89.49	89.26	9308.47	11917.44	-416.53	11910.17	0.24	562086.61	659566.06	32.544218	-103.815517	11917.45	92.00
	21046.00	89.65	88.86	9309.15	12008.32	-415.04	12001.16	0.47	562088.10	659657.04	32.544221	-103.815221	12008.33	91.98
	21136.00	89.38	88.79	9309.92	12098.19	-413.19	12091.13	0.31	562089.95	659747.01	32.544225	-103.814929	12098.19	91.96
	21227.00	89.55	88.87	9310.76	12189.05	-411.33	12182.11	0.21	562091.80	659837.98	32.544229	-103.814634	12189.05	91.93
	21317.00	89.62	89.16	9311.42	12278.93	-409.79	12272.09	0.33	562093.35	659927.96	32.544232	-103.814342	12278.93	91.91
	21408.00	89.65	90.20	9312.00	12369.86	-409.28	12363.09	1.14	562093.86	660018.95	32.544232	-103.814047	12369.86	91.90
Last Survey	21460.00	89.58	89.37	9312.35	12421.82	-409.08	12415.09	1.60	562094.05	660070.94	32.544232	-103.813878	12421.83	91.89
LTP [28' FSL, 50' FEL]	21478.00	89.58	89.37	9312.48	12439.81	-408.89	12433.09	0.00	562094.25	660088.94	32.544232	-103.813820	12439.81	91.88
Projection to Bit [28' FSL, 29' FEL]	21500.00	89.58	89.37	9312.64	12461.78	-408.64	12455.08	0.00	562094.49	660110.94	32.544232	-103.813748	12461.79	91.88

Survey Type: Def Survey

Survey Error Model: ISCWSA Rev 0 *** 3-D 95.000% Confidence 2.7955 sigma
 Survey Program:

Description	Part	MD From (ft)	MD To (ft)	EOU Freq (ft)	Hole Size (in)	Casing Diameter (in)	Survey Tool Type	Borehole / Survey
	1	0.000	31.000	1/98.425	24.000	18.625	NAL_MWD_IFR1+MS-Depth Only	Original Borehole / XTO Big Eddy Unit 5E Han Solo 114H 0 to 21500' MD
	1	31.000	31.000	Act Stns	24.000	18.625	NAL_MWD_IFR1+MS-Depth Only	Original Borehole / XTO Big Eddy Unit 5E Han Solo 114H 0 to 21500' MD
	1	31.000	707.000	Act Stns	24.000	18.625	NAL_MWD_IFR1+MS	Original Borehole / XTO Big Eddy Unit 5E Han Solo 114H 0 to 21500' MD
XBOLT	1	707.000	2774.000	Act Stns	17.500	13.375	NAL_MWD_IFR1+MS	Original Borehole / XTO Big Eddy Unit 5E Han Solo 114H 0 to 21500' MD
XBOLT	1	2774.000	4085.000	Act Stns	12.250	9.625	NAL_MWD_IFR1+MS	Original Borehole / XTO Big Eddy Unit 5E Han Solo 114H 0 to 21500' MD
Slimpulse	1	4085.000	21500.000	Act Stns	8.750	5.500	NAL_MWD_IFR1+MS	Original Borehole / XTO Big Eddy Unit 5E Han Solo 114H 0 to 21500' MD

...Original BoreholeXTO Big Eddy Unit 5E Han Solo 114H 0 to 21500' MD

Office
District I - (575) 393-6161
1625 N. French Dr., Hobbs, NM 88240
District II - (575) 748-1283
811 S. First St., Artesia, NM 88210
District III - (505) 334-6178
1000 Rio Brazos Rd., Aztec, NM 87410
District IV - (505) 476-3460
1220 S. St. Francis Dr., Santa Fe, NM 87505

State of New Mexico
Energy, Minerals and Natural Resources

Form C-103
Revised July 18, 2013

OIL CONSERVATION DIVISION
1220 South St. Francis Dr.
Santa Fe, NM 87505

WELL API NO. 30-015-46830
5. Indicate Type of Lease STATE [] FEE [] X FED
6. State Oil & Gas Lease No.
7. Lease Name or Unit Agreement Name Big Eddy Unit 5E Han Solo
8. Well Number 114H
9. OGRID Number 373075
10. Pool name or Wildcat WC-015 G-06 S203127G; Bone Spring

SUNDRY NOTICES AND REPORTS ON WELLS
(DO NOT USE THIS FORM FOR PROPOSALS TO DRILL OR TO DEEPEN OR PLUG BACK TO A DIFFERENT RESERVOIR. USE "APPLICATION FOR PERMIT" (FORM C-101) FOR SUCH PROPOSALS.)
1. Type of Well: Oil Well [x] Gas Well [] Other []
2. Name of Operator XTO Permian Operating, LLC
3. Address of Operator 6401 Holiday Hill rd bldg #5 Midland, TX 79707
4. Well Location Unit Letter G : 2145 feet from the North line and 1915 feet from the East line Section 27 Township 20S Range 31E NMPM County Eddy
11. Elevation (Show whether DR, RKB, RT, GR, etc.) 3525' GL

12. Check Appropriate Box to Indicate Nature of Notice, Report or Other Data

NOTICE OF INTENTION TO:
PERFORM REMEDIAL WORK [] PLUG AND ABANDON []
TEMPORARILY ABANDON [] CHANGE PLANS []
PULL OR ALTER CASING [] MULTIPLE COMPL []
DOWNHOLE COMMINGLE []
CLOSED-LOOP SYSTEM []
OTHER: []
SUBSEQUENT REPORT OF:
REMEDIAL WORK [] ALTERING CASING []
COMMENCE DRILLING OPNS. [] P AND A []
CASING/CEMENT JOB []
OTHER: Completion Sundry [x]

13. Describe proposed or completed operations. (Clearly state all pertinent details, and give pertinent dates, including estimated date of starting any proposed work). SEE RULE 19.15.7.14 NMAC. For Multiple Completions: Attach wellbore diagram of proposed completion or recompletion.

XTO PERMIAN OPERATING LLC respectfully submits this sundry notice to report the completion operations of the referenced well.
KOP @ depth 8,477 ft.
PBTD = 21,483 ft.2/28/21 Run RCB/GR/CCL
1/22/22 Pressure test 5.5 in csg to 7,105 psi for 30min test good, open sleeve.
4/2/22 Perf and frac 58 stages, 1,396 total shots, from 9,681 to 21,397 using 624,439 bbls of fluid and 28,996,802 lbs Proppant. Tag and drill out plugs.
5/6/22 Run 2-7/8 L80 6.5# tubing set at 8,238 ft.
5/6/22 ESP pmp setting depth 8,187 ft.
Ready Date: 5/28/2022
First Production: 5/29/2022

Spud Date: 08/19/2020

Rig Release Date: 09/15/2020

I hereby certify that the information above is true and complete to the best of my knowledge and belief.

SIGNATURE Cassie Evans TITLE Regulatory Analyst DATE 06/06/2022

Type or print name Cassie Evans E-mail address: cassie.evans@exxonmobil.com PHONE: 432.218.3671

For State Use Only

APPROVED BY: TITLE DATE

Conditions of Approval (if any):

Submit To Appropriate District Office Two Copies District I 1625 N. French Dr., Hobbs, NM 88240 District II 811 S. First St., Artesia, NM 88210 District III 1000 Rio Brazos Rd., Aztec, NM 87410 District IV 1220 S. St. Francis Dr., Santa Fe, NM 87505		State of New Mexico Energy, Minerals and Natural Resources Oil Conservation Division 1220 South St. Francis Dr. Santa Fe, NM 87505				Form C-105 Revised April 3, 2017					
		1. WELL API NO. 30-015-46830		2. Type of Lease <input type="checkbox"/> STATE <input type="checkbox"/> FEE <input checked="" type="checkbox"/> FED/INDIAN		3. State Oil & Gas Lease No.					
WELL COMPLETION OR RECOMPLETION REPORT AND LOG											
4. Reason for filing: <input checked="" type="checkbox"/> COMPLETION REPORT (Fill in boxes #1 through #31 for State and Fee wells only) <input type="checkbox"/> C-144 CLOSURE ATTACHMENT (Fill in boxes #1 through #9, #15 Date Rig Released and #32 and/or #33; attach this and the plat to the C-144 closure report in accordance with 19.15.17.13.K NMAC)				5. Lease Name or Unit Agreement Name BIG EDDY UNIT 5E HAN SOLO							
7. Type of Completion: <input checked="" type="checkbox"/> NEW WELL <input type="checkbox"/> WORKOVER <input type="checkbox"/> DEEPENING <input type="checkbox"/> PLUGBACK <input type="checkbox"/> DIFFERENT RESERVOIR <input type="checkbox"/> OTHER				6. Well Number: 114H							
8. Name of Operator XTO PERMIAN OPERATING LLC.				9. OGRID 373075							
10. Address of Operator 6401 HOLIDAY HILL RD BLDG #5, MIDLAND TX 79707				11. Pool name or Wildcat WC-015 G-06 S203127G;BONE SPRING (OIL)							
12. Location	Unit Ltr	Section	Township	Range	Lot	Feet from the	N/S Line	Feet from the	E/W Line	County	
Surface:	G	27	20S	31E		2145	North	1915	East	Eddy	
BH:	H	25	20S	31E		2622	North	28	East	Eddy	
13. Date Spudded 8/19/2020	14. Date T.D. Reached 9/12/2020	15. Date Rig Released 9/15/2020		16. Date Completed (Ready to Produce) 5/28/2022		17. Elevations (DF and RKB, RT, GR, etc.) 3525' GL					
18. Total Measured Depth of Well 21,500		19. Plug Back Measured Depth 21,483		20. Was Directional Survey Made? Yes		21. Type Electric and Other Logs Run CBL					
22. Producing Interval(s), of this completion - Top, Bottom, Name 9,681 TO 21,397 WC-015 G-06 S203127G;BONE SPRING (OIL)											
23. CASING RECORD (Report all strings set in well)											
CASING SIZE		WEIGHT LB./FT.		DEPTH SET		HOLE SIZE		CEMENTING RECORD		AMOUNT PULLED	
18 5/8"		87.5		707'		24"		1365			
13 3/8"		68.0		2,774'		17 1/2"		2205			
9 5/8"		40.0		4,070'		12 1/4"		1255			
5 1/2"		20.0		21,485'		8 1/2"		3025			
24. LINER RECORD						25. TUBING RECORD					
SIZE	TOP	BOTTOM	SACKS CEMENT	SCREEN	SIZE	DEPTH SET	PACKER SET				
					2 7/8"	8,238					
26. Perforation record (interval, size, and number) 9,681 TO 21,397, 4spf, 1,396 Total Shots 58 stages						27. ACID, SHOT, FRACTURE, CEMENT, SQUEEZE, ETC. DEPTH INTERVAL AMOUNT AND KIND MATERIAL USED 9,681 TO 21,397 624,439 bbl fluid + 28,996,802 lbs Proppant					
28. PRODUCTION											
Date First Production 5/29/2022			Production Method (<i>Flowing, gas lift, pumping - Size and type pump</i>)				Well Status (<i>Prod. or Shut-in</i>) Producing				
Date of Test 5/29/2022	Hours Tested 24	Choke Size	Prod'n For Test Period	Oil - Bbl 974	Gas - MCF 483	Water - Bbl. 1623	Gas - Oil Ratio 495				
Flow Tubing Press. 451	Casing Pressure 87	Calculated 24-Hour Rate	Oil - Bbl. 974	Gas - MCF 483	Water - Bbl. 1623	Oil Gravity - API - (<i>Corr.</i>)					
29. Disposition of Gas (<i>Sold, used for fuel, vented, etc.</i>) Sold							30. Test Witnessed By				
31. List Attachments C-104 NW, C-102 & Supplement , Directional Survey (Log uploaded to NMOCD)											
32. If a temporary pit was used at the well, attach a plat with the location of the temporary pit.							33. Rig Release Date:				
34. If an on-site burial was used at the well, report the exact location of the on-site burial:											
Latitude				Longitude				NAD83			
<i>I hereby certify that the information shown on both sides of this form is true and complete to the best of my knowledge and belief</i>											
Signature <i>Cassie Evans</i>			Name Cassie Evans			Title Regulatory Analyst			Date 06/06/22		
E-mail Address cassie.evans@exxonmobil.com											

INSTRUCTIONS

This form is to be filed with the appropriate District Office of the Division not later than 20 days after the completion of any newly-drilled or deepened well and not later than 60 days after completion of closure. When submitted as a completion report, this shall be accompanied by one copy of all electrical and radio-activity logs run on the well and a summary of all special tests conducted, including drill stem tests. All depths reported shall be measured depths. In the case of directionally drilled wells, true vertical depths shall also be reported. For multiple completions, items 11, 12 and 26-31 shall be reported for each zone.

INDICATE FORMATION TOPS IN CONFORMANCE WITH GEOGRAPHICAL SECTION OF STATE

Southeastern New Mexico		Northwestern New Mexico	
T. Anhy	T. Canyon	T. Ojo Alamo	T. Penn A"
T. Salt 935	T. Strawn	T. Kirtland	T. Penn. "B"
B. Salt 2455	T. Atoka	T. Fruitland	T. Penn. "C"
T. Yates	T. Miss	T. Pictured Cliffs	T. Penn. "D"
T. 7 Rivers	T. Devonian	T. Cliff House	T. Leadville
T. Queen	T. Silurian	T. Menefee	T. Madison
T. Grayburg	T. Montoya	T. Point Lookout	T. Elbert
T. San Andres	T. Simpson	T. Mancos	T. McCracken
T. Glorieta	T. McKee	T. Gallup	T. Ignacio Otzte
T. Paddock	T. Ellenburger	Base Greenhorn	T. Granite
T. Blinebry	T. Gr. Wash	T. Dakota	
T. Tubb	T. Delaware Sand 3934	T. Morrison	
T. Drinkard	T. Bone Springs 7496	T. Todilto	
T. Abo	T. Rustler 660	T. Entrada	
T. Wolfcamp	T.	T. Wingate	
T. Penn	T.	T. Chinle	
T. Cisco (Bough C)	T.	T. Permian	

OIL OR GAS SANDS OR ZONES

No. 1, from.....to..... No. 3, from.....to.....
 No. 2, from.....to..... No. 4, from.....to.....

IMPORTANT WATER SANDS

Include data on rate of water inflow and elevation to which water rose in hole.

No. 1, from.....to.....feet.....
 No. 2, from.....to.....feet.....
 No. 3, from.....to.....feet.....

LITHOLOGY RECORD (Attach additional sheet if necessary)

From	To	Thickness In Feet	Lithology	From	To	Thickness In Feet	Lithology

Sante Fe Main Office
Phone: (505) 476-3441

General Information
Phone: (505) 629-6116

Online Phone Directory
<https://www.emnrd.nm.gov/ocd/contact-us>

State of New Mexico
Energy, Minerals and Natural Resources
Oil Conservation Division
1220 S. St Francis Dr.
Santa Fe, NM 87505

ACKNOWLEDGMENTS

Action 119993

ACKNOWLEDGMENTS

Operator: XTO PERMIAN OPERATING LLC. 6401 HOLIDAY HILL ROAD MIDLAND, TX 79707	OGRID: 373075
	Action Number: 119993
	Action Type: [C-104] Completion Packet (C-104C)

ACKNOWLEDGMENTS

<input checked="" type="checkbox"/>	I hereby certify that the required Water Use Report has been, or will be, submitted for this wells completion.
<input checked="" type="checkbox"/>	I hereby certify that the required FracFocus disclosure has been, or will be, submitted for this wells completion.

Sante Fe Main Office
Phone: (505) 476-3441

General Information
Phone: (505) 629-6116

Online Phone Directory
<https://www.emnrd.nm.gov/ocd/contact-us>

State of New Mexico
Energy, Minerals and Natural Resources
Oil Conservation Division
1220 S. St Francis Dr.
Santa Fe, NM 87505

CONDITIONS

Action 119993

CONDITIONS

Operator: XTO PERMIAN OPERATING LLC. 6401 HOLIDAY HILL ROAD MIDLAND, TX 79707	OGRID: 373075
	Action Number: 119993
	Action Type: [C-104] Completion Packet (C-104C)

CONDITIONS

Created By	Condition	Condition Date
crystal.walker	None	8/29/2025