

Well Name: MICHENER LS	Well Location: T28N / R9W / SEC 15 / SWSW / 36.657639 / -107.781113	County or Parish/State: SAN JUAN / NM
Well Number: 3	Type of Well: CONVENTIONAL GAS WELL	Allottee or Tribe Name:
Lease Number: NMSF077107B	Unit or CA Name:	Unit or CA Number:
US Well Number: 3004507410	Operator: HILCORP ENERGY COMPANY	

Notice of Intent

Sundry ID: 2871572

Type of Submission: Notice of Intent

Type of Action: Plug Back

Date Sundry Submitted: 09/04/2025

Time Sundry Submitted: 07:54

Date proposed operation will begin: 09/08/2025

Procedure Description: Hilcorp Energy drilled out the Dakota isolation plug and attempted to produce commingled MV/DK gas (see attached reports). The Dakota was swabbed extensively and did not produce gas. Hilcorp requests permission to plug back the Dakota per the attached procedure. The well will be returned to production as a standalone Mesaverde.

Surface Disturbance

Is any additional surface disturbance proposed?: No

NOI Attachments

Procedure Description

Michener_LS_3_Commingled_SR_20250904075109.pdf

Michener_LS_3_DK_Plugback_NOI_20250904075042.pdf

Well Name: MICHENER LS

Well Location: T28N / R9W / SEC 15 /
SWSW / 36.657639 / -107.781113

County or Parish/State: SAN
JUAN / NM

Well Number: 3

Type of Well: CONVENTIONAL GAS
WELL

Allottee or Tribe Name:

Lease Number: NMSF077107B

Unit or CA Name:

Unit or CA Number:

US Well Number: 3004507410

Operator: HILCORP ENERGY
COMPANY

Operator

I certify that the foregoing is true and correct. Title 18 U.S.C. Section 1001 and Title 43 U.S.C. Section 1212, make it a crime for any person knowingly and willfully to make to any department or agency of the United States any false, fictitious or fraudulent statements or representations as to any matter within its jurisdiction. Electronic submission of Sundry Notices through this system satisfies regulations requiring a

Operator Electronic Signature: CHERYLENE WESTON

Signed on: SEP 04, 2025 07:51 AM

Name: HILCORP ENERGY COMPANY

Title: Operations/Regulatory Tech - Sr

Street Address: 1111 TRAVIS STREET

City: HOUSTON

State: TX

Phone: (713) 289-2615

Email address: CWESTON@HILCORP.COM

Field

Representative Name:

Street Address:

City:

State:

Zip:

Phone:

Email address:

BLM Point of Contact

BLM POC Name: KENNETH G RENNICK

BLM POC Title: Petroleum Engineer

BLM POC Phone: 5055647742

BLM POC Email Address: krennick@blm.gov

Disposition: Approved

Disposition Date: 09/04/2025

Signature: Kenneth Rennick

Plugback DK - NOI

Michener LS 3

API # - 3004507410

Procedure:

Hold PJSM prior to beginning any and all operations. Properly document all operations via the JSA process. Ensure that all personnel onsite abide by HEC safety protocol, including PPE, housekeeping, and standard guidelines.

Verify cathodic protection is off and wellhead instrumentation is properly disconnected from the wellhead. Comply with all NMOCD, BLM, and HEC safety and environmental regulations.

Verify there is no H2S present prior to beginning operations. If any H2S is present, take the necessary actions to ensure that the location is safe prior to beginning operations.

Observe and record pressures across all string daily, prior to beginning operations. **Remember to notify NMOCD 24 hours prior to starting operations on location.**

1. Contact NMOCD and BLM (Where Applicable 24 hours prior to MIRU).
2. Hold pre-job safety meeting. Verify cathodic is off. Comply with all NMOCD, BLM, and HEC Safety and environmental regulations.
3. MIRU service rig and associated equipment; NU and test BOP.
4. PU and TOO H w 2-3/8" tubing
5. RIH w 5.5" CIBP and set within 50' top DK perf (top DK perf at 6673')
6. TOO H w work string and then make up production BHA
7. RBIH with tubing and land within Mesaverde (MV perfs 3965' – 4563')
8. Return well to production as a Mesaverde producer



Hilcorp Energy Company

Current Schematic - Version 3

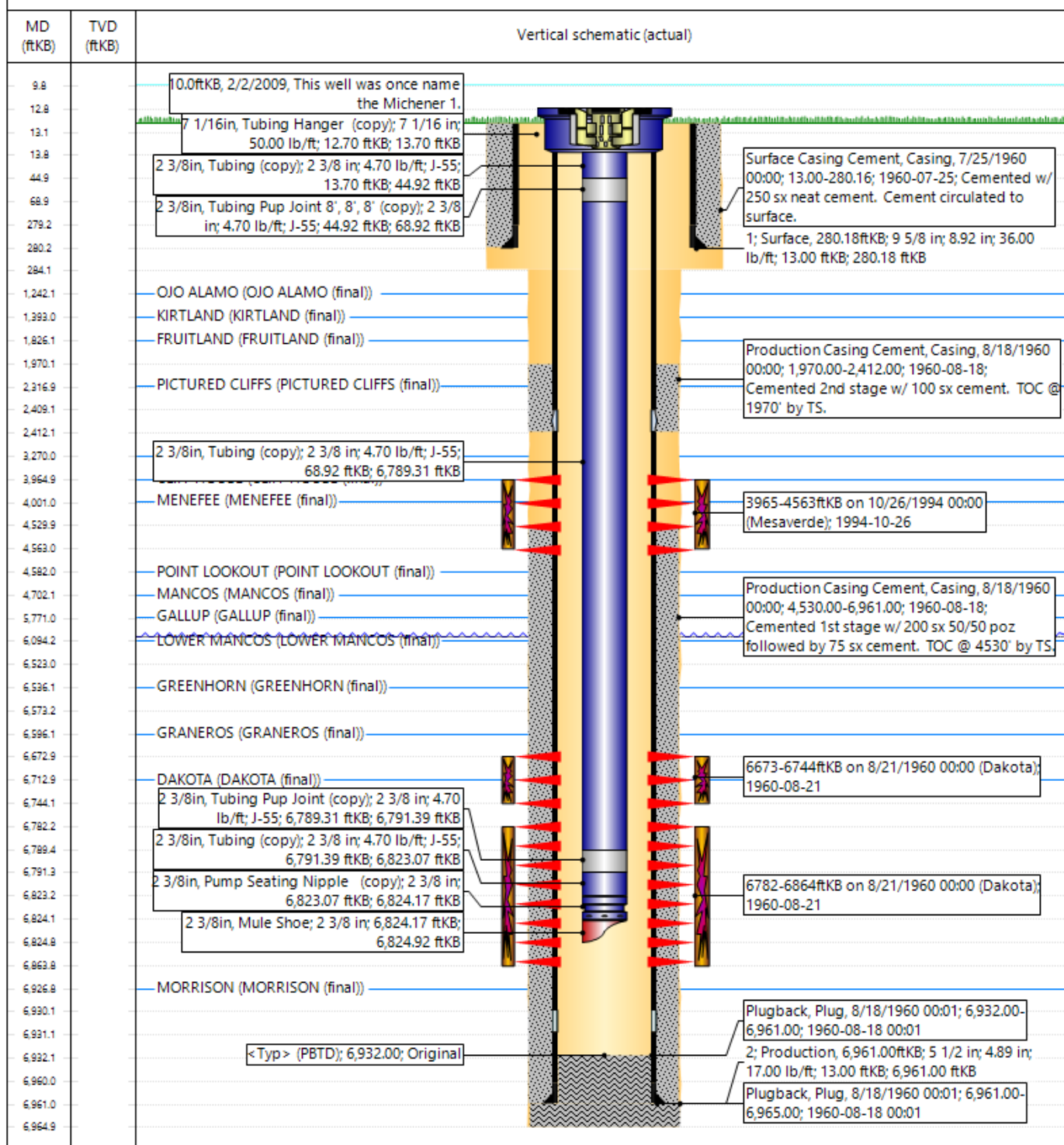
Well Name: MICHERNER LS 3

API / UWI 3004507410	Surface Legal Location 015-028N-009W-M	Field Name MV	Route 0805	State/Province NEW MEXICO	Well Configuration Type
Ground Elevation (ft) 6,030.00	Original KBRT Elevation (ft) 6,043.00	Tubing Hanger Elevation (ft) 6,030.00	RKB to GL (ft) 13.00	KB-Casing Flange Distance (ft) 13.00	KB-Tubing Hanger Distance (ft) 13.00

Tubing Strings

Run Date 8/4/2025 14:30	Set Depth (ftKB) 6,824.92	String Max Nominal OD (in) 2 3/8	String Min Nominal ID (in) 2.00	Weight/Length (lb/ft) 4.70	Original Spud Date 7/24/1960 00:00
----------------------------	------------------------------	-------------------------------------	------------------------------------	-------------------------------	---------------------------------------

Original Hole, MICHERNER LS 3



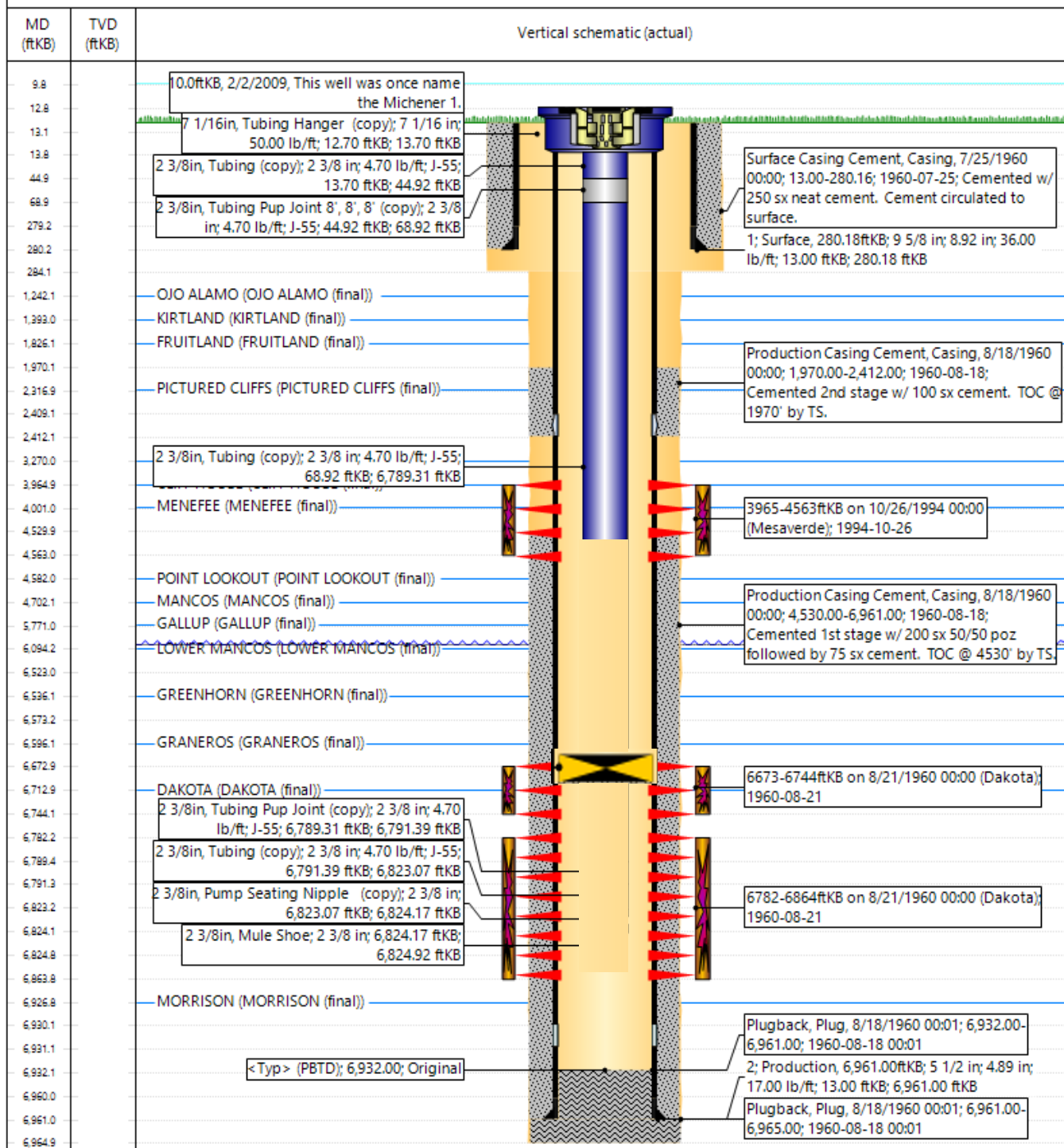


PROPOSED SCHEMATIC

Well Name: MICHENER LS 3

API / UWI 3004507410	Surface Legal Location 015-028N-009W-M	Field Name MV	Route 0805	State/Province NEW MEXICO	Well Configuration Type
Ground Elevation (ft) 6,030.00	Original KB/RT Elevation (ft) 6,043.00	Tubing Hanger Elevation (ft) 6,030.00	RKB to GL (ft) 13.00	KB-Casing Flange Distance (ft) 13.00	KB-Tubing Hanger Distance (ft) 13.00
Tubing Strings					
		String Max Nominal OD (in) 2 3/8	String Min Nominal ID (in) 2.00	Weight/Length (lb/ft) 4.70	Original Spud Date 7/24/1960 00:00

Original Hole, MICHENER LS 3





Well Operations Summary L48

Well Name: MICHENER LS 3

API: 3004507410

Field: MV

State: NEW MEXICO

Permit to Drill (PTD) #:

Sundry #:

Rig/Service: BHE 38

Jobs

Actual Start Date: 7/28/2025

End Date: 8/4/2025

Report Number 1	Report Start Date 7/28/2025	Report End Date 7/28/2025
--------------------	--------------------------------	------------------------------

Operation

RIG CRW TRAVEL TO THE MARSHALL 2E. START RIG AND PREP TO MOVE.

MOVE RIG AND EQUIPMENT TO THE MICHENER LS#3.

PRE JOB SAFETY MEETING WITH THE CREW. CHECK PRESSURES ON WELL. SICP 211 PSI. SITP 211 PSI. SIBHP 0 PSI.

RIG UP RIG AND SUPPORT EQUIPMENT. BLOW DOWN WELL IN 7 MINUTES.

ND WH. NU BOP. PULL TUBING HANGER TO THE RIG FLOOR. REMOVE SAME.

TRIP OUT OF THE HOLE WITH 151 JOINTS OF 2-3/8" TUBING FROM A DEPTH OF 4731' LAYED DOWN THE ENTIRE STRING DUE TO CORROSION AND PITTING. SCAN WENT AS FOLLOWS. 16 RED. 77 BLUE. 58 GREEN.

SHUT THE WELL IN. SECURE LOCATION. SHUT DOWN FOR THE DAY.

TRAVEL TO YARD.

Report Number 2	Report Start Date 7/29/2025	Report End Date 7/29/2025
--------------------	--------------------------------	------------------------------

Operation

RIG CREW TRAVEL TO LOCATION.

SAFETY MEETING. CHECK PRESSURES ON WELL. SICP 195. SITP N/A. SIBHP 0. BDW IN 7 MINUTES. SPOT NEW TUBING TRAILER IN.

MAKE UP 4-3/4" TWISTER BIT. TALLY AND TRIP IN THE HOLE TO TAG DEPTH OF 3992'. PERFS FROM 3965' TO 4563'.

RIG UP SWIVEL. BRING ON 12 BBL PER HOUR AIR FOAM MIST AT 1200 CFM. DRILL UP HEAVY SCALE FROM 3992' TO 4044'. AFTER 4044' SCALE WAS SPOTTY. TRIP IN THE HOLE TO BOTTOM MV PERF AT 4563' WITH 146 JOINTS OF 2-3/8" TUBING IN THE HOLE. BRING ON 12 BBL HOUR AIR FOAM MIST. UNLOAD HOLE AT 4563'. SHUT DOWN AIR UNIT. PULL 10 STANDS TO ABOVE TOP PERF AT 3951'.

RIG UP INNOSPEC. PUMP 20 GALLONS OF SOLVENT. 10 GALLONS OF IRON CHELATOR. 300 GALLONS OF 15% HCL ACID INHIBITED. 30 GALLONS OF H2S SCAVENGER. FOLLOWED BY A 1 BBL WATER FLUSH ACROSS MV PERFS FROM 3965' TO 4563'.

SHUT THE WELL IN. SECURE LOCATION. SHUT DOWN FOR THE DAY.

TRAVEL TO YARD

Report Number 3	Report Start Date 7/30/2025	Report End Date 7/30/2025
--------------------	--------------------------------	------------------------------

Operation

TRAVEL TO LOCATION

SAFETY MEETING. CHECK PRESSURES ON WELL. SICP 150. SITP 150. SIBHP 0. BDW IN 6 MINUTES.

TRIP IN THE HOLE TO BOTTOM MV PERF AT 4563'. BRING ON AIR FOAM MIST. UNLOAD ACID FROM HOLE. SHUT DOWN AIR UNIT. TIH TO 6147'.

TAGGED SOLID 376' ABOVE CEMENT PLUG AT 6523'.

RIG UP POWER SWIVEL. BRING ON 12 BBL PER HOUR AIR FOAM MIST. **CLEAN OUT FROM 6147' TO CIBP AT 6573' WITH 4-3/4" TWISTER BIT.** AT 2:30 PM WE WERE ON THE CIBP. **DRILL UP CIBP AT 6573'** WITH 1200 CFM AIR AND 12 BBL PER HOUR AIR FOAM MIST. CIRCULATING PRESSURE WENT FROM 450 PSI TO 500 PSI AFTER DRILL OUT. STAYED AT 500 PSI. CIRCULATED AT A DEPTH OF 6604' WITH A TRACE OF SAND. SHUT AIR FOAM MIST DOWN.

HANG BACK SWIVEL. TRIP OUT OF THE HOLE TO A DEPTH OF 3920'. TOP MV PERF AT 3965'.

SHUT THE WELL IN. SECURE LOCATION. SHUT DOWN FOR THE DAY.

TRAVEL TO YARD.

Report Number 4	Report Start Date 7/31/2025	Report End Date 7/31/2025
--------------------	--------------------------------	------------------------------

Operation

TRAVEL TO LOCATION.

SAFETY MEETING. CHECK PRESURES ON WELL. SICP 320. SITP 240. SIBHP 0. BDW IN 11 MINUTES.

TRIP IN THE HOLE WITH 4-3/4" BIT FROM A DEPTH OF 3920' TO TAG UP DEPTH OF 6848'. **DK PERFS FROM 6673' TO 6864'**

RIG UP POWER SWIVEL. BRING ON AIR UNIT AT 1200 CFM AND 12 BBL PER HOUR AIR FOAM MIST. IT TOOK @ 30 MINUTES TO BREAK CIRCULATION TO THE OPEN TOP 400 BBL TANK. CLEAN OUT AND PUSH CIBP PARTS TO ORIGINAL PBTD OF 6932'. SAND WAS AT 2-3 CUPS PER 5 GALLON BUCKET TEST DURING INITIAL CLEAN OUT. BY THE END OF THE CLEAN OUT SAND WAS AT A TRACE. PUMPED MULTIPLE SWEEPS. HOLE CLEAN. SHUT DOWN AIR UNIT

RIG DOWN SWIVEL. TOOH TO ABOVE TOP PERF AT 3920'

SHUT THE WELL IN. SECURE LOCATION. SHUT DOWN FOR THE DAY.

TRAVEL TO YARD.

Report Number 5	Report Start Date 8/1/2025	Report End Date 8/1/2025
--------------------	-------------------------------	-----------------------------

Operation

RIG CREW TRAVEL TO LOCATION.

SAFETY MEETING. CHECK PRESSUES ON WELL. SICP 315. SITP 240. SIBHP 0. BDW IN 10 MINUTES.

TRIP OUT OF THE HOLE WITH THE 4-3/4" BIT FROM 3920'.



Well Operations Summary L48

Well Name: MICHENER LS 3

API: 3004507410	Field: MV	State: NEW MEXICO
	Sundry #:	Rig/Service: BHE 38

Operation

MAKE UP PRODUCTION BHA. TRIP AND DRIFT IN THE HOLE WITH THE 2-3/8" X/CK/MULE SHOE. 1.78 ID SEATING NIPPLE. ONE JOINT OF 2-3/8" TUBING. 2' X 2-3/8" MARKER JOINT. 215 JOINTS OF 2-3/8" TUBING. 8',8',8' X 2-3/8" PUP JOINTS. ONE JOINT OF 2-3/8" TUBING AND 7-1/16" TUBING HANGER. TUI NG LANDED AT A DEPTH OF 6824'. SEATING NIPPLE AT A DEPTH OF 6823'. NOTE: ON TRIP IN THE HOLE. STARTED IN WITH A PUMP OUT DISC SUB. WE WERE HAVING SOME TROUBLE DRIFTING DUE TO SOME DEBRIS IN THE TUBING FROM A LEAKY STRING FLOAT DURING CLEAN OUT. WE TRIPPED BACK OUT WITH 12 STANDS AND INSTALLED A BALL DROP X/CK. ONCE WE HAD 30 STANDS IN THE HOLE. WE PUT THE AIR ON THE TUBING. AND MADE SURE TUBING WAS CLEAR. ALL GOOD. ALL TUBING DRIFTED GOOD IN THE HOLE.

RIG DOWN RIG FLOOR AND POWER SWIVEL. ND BOP. NU WH. PUMP 3 BBL WATER PAD DOWN TUBING. DROP BALL AND PRESSURE TEST TUBING TO 500 PSI GOOD. ATTEMPT TO PUMP OFF X/CK. PRESSURE UP TO 1800 PSI. WOULD NOT PUMP OFF. BLEED OFF PRESSURE AND PUMP 10 BBLs OF 2% KCL DOWN THE TUBING. BRING AIR BACK ON. PRESSURE UP TO 1800 PSI. **CK WOULD NOT PUMP OFF. BLED OFF PRESSURE FROM TUBING. CALLED ENGINEER CAMERON SKELTON. DISCUSSED X/CK ISSUE. DECISION MADE TO TRIP TUBING ON MONDAY.**

SHUT THE WELL IN. SECURE LOCATION. SHUT DOWN FOR THE DAY.

TRAVEL TO YARD.

Report Number 6	Report Start Date 8/4/2025	Report End Date 8/4/2025
--------------------	-------------------------------	-----------------------------

Operation

TRAVEL TO LOCATION.

SAFETY MEETING. CHECK PRESSURES ON WELL. SICP 360. SITP 240. SIBHP 0. BDW IN 12 MINUTES.

ND WH. NU BOP. PULL TUBING HANGER TO RIG FLOOR AND REMOVE.

TRIP OUT OF THE HOLE WITH THE 2-3/8" PRODUCTION STRING FROM 6824'. THERE WAS ABOUT 3 INCHES OF FILL ON TOP OF THE X/CK. THE PUMP OUT BALL WAS SITTING ON TOP OF THE FILL. THEN THE LAST JOINT OF TUBING ALSO HAD SOME SEDIMENT IN IT.

MAKE UP PRODUCTION BHA. TRIP AND DRIFT IN THE HOLE 2-3/8" MULE SHOE. 1.78 ID SEATING NIPPLE. **1 JOINT OF 2-3/8" TUBING.** 2' X 2-3/8" MARKER JOINT. **215 JOINTS OF 2-3/8" TUBING.** 8',8',8' X 2-3/8" PUP JOINTS. **1 JOINT OF 2-3/8" TUBING** AND 7-1/16" TUBING HANGER. **TUBING LANDED AT 6824'. SEATING NIPPLE AT 6823'.**

ND BOP. NU WH.

RIG DOWN RIG AND EQUIPMENT. JOB COMPLETE. NOTIFIED BURL APPELEGATE THAT RIG OPS WERE COMPLETE.

TRAVEL TO YARD.

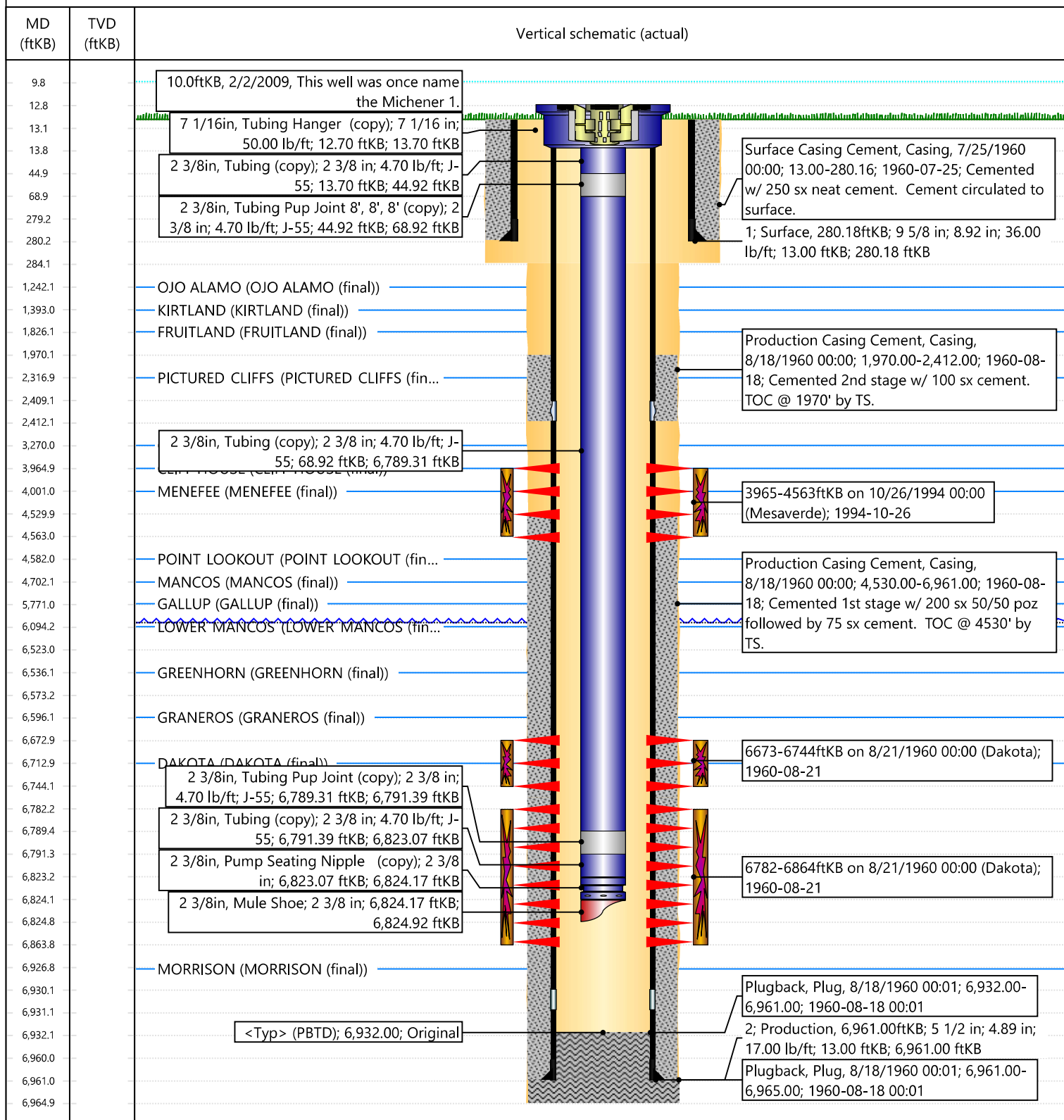


Current Schematic - Version 3

Well Name: MICHENER LS 3

API / UWI 3004507410	Surface Legal Location 015-028N-009W-M	Field Name MV	Route 0805	State/Province NEW MEXICO	Well Configuration Type
Ground Elevation (ft) 6,030.00	Original KB/RT Elevation (ft) 6,043.00	Tubing Hanger Elevation (ft) 6,030.00	RKB to GL (ft) 13.00	KB-Casing Flange Distance (ft) 13.00	KB-Tubing Hanger Distance (ft) 13.00
Tubing Strings					
Run Date 8/4/2025 14:30	Set Depth (ftKB) 6,824.92	String Max Nominal OD (in) 2 3/8	String Min Nominal ID (in) 2.00	Weight/Length (lb/ft) 4.70	Original Spud Date 7/24/1960 00:00

Original Hole, MICHENER LS 3



Sante Fe Main Office
Phone: (505) 476-3441

General Information
Phone: (505) 629-6116

Online Phone Directory
<https://www.emnrd.nm.gov/ocd/contact-us>

State of New Mexico
Energy, Minerals and Natural Resources
Oil Conservation Division
1220 S. St Francis Dr.
Santa Fe, NM 87505

CONDITIONS

Action 502680

CONDITIONS

Operator: HILCORP ENERGY COMPANY 1111 Travis Street Houston, TX 77002	OGRID: 372171
	Action Number: 502680
	Action Type: [C-103] NOI Workover (C-103G)

CONDITIONS

Created By	Condition	Condition Date
andrew.fordyce	Submit as a [C-103] NOI Recompletion (C-103E) in the future.	9/4/2025