

Well Name: ROSA UNIT	Well Location: T31N / R6W / SEC 8 / NWNE / 36.91838 / -107.48482	County or Parish/State: SAN JUAN / NM
Well Number: 88C	Type of Well: CONVENTIONAL GAS WELL	Allottee or Tribe Name:
Lease Number: NMSF078765	Unit or CA Name: ROSA UNIT, ROSA UNIT--DK, ROSA UNIT--MV	Unit or CA Number: NMNM78407A, NMNM78407B, NMNM78407E
US Well Number: 3004534458	Operator: LOGOS OPERATING LLC	

Subsequent Report

Sundry ID: 2872817

Type of Submission: Subsequent Report Type of Action: Workover Operations

Date Sundry Submitted: 09/10/2025 Time Sundry Submitted: 10:30

Date Operation Actually Began: 07/10/2025

Actual Procedure: 7/10/2025 - MIRU. ND WH. NU BOP. Test BOP, Good test. Tag fill at 8045'. TOO H w/148jts of 2-3/8" production tubing. SIW. SDFN. 7/11/2025 - TIH w/176jts 2-3/8" tubing, J-55, 4.7#, landed at 5640', FN @ 5639'. ND BOP. NU WH. SIW. RDMO.

SR Attachments

Actual Procedure

Rosa_Unit_88C_Wellbore_Schematic_20250910102957.pdf

Received by OCD: 9/29/2025 2:26:37 PM

Page 2 of 4

Well Name: ROSA UNIT	Well Location: T31N / R6W / SEC 8 / NWNE / 36.91838 / -107.48482	County or Parish/State: SAN JUAN / NM
Well Number: 88C	Type of Well: CONVENTIONAL GAS WELL	Allottee or Tribe Name:
Lease Number: NMSF078765	Unit or CA Name: ROSA UNIT, ROSA UNIT--DK, ROSA UNIT--MV	Unit or CA Number: NMNM78407A, NMNM78407B, NMNM78407E
US Well Number: 3004534458	Operator: LOGOS OPERATING LLC	

Operator

I certify that the foregoing is true and correct. Title 18 U.S.C. Section 1001 and Title 43 U.S.C. Section 1212, make it a crime for any person knowingly and willfully to make to any department or agency of the United States any false, fictitious or fraudulent statements or representations as to any matter within its jurisdiction. Electronic submission of Sundry Notices through this system satisfies regulations requiring a

Operator Electronic Signature: ETTA TRUJILLO	Signed on: SEP 10, 2025 10:31 AM
Name: LOGOS OPERATING LLC	
Title: Regulatory Specialist	
Street Address: 2010 AFTON PLACE	
City: Farmington	State: NM
Phone: (505) 324-4154	
Email address: ETRUJILLO@LOGOSRESOURCESLLC.COM	

Field

Representative Name:		
Street Address:		
City:	State:	Zip:
Phone:		
Email address:		

BLM Point of Contact

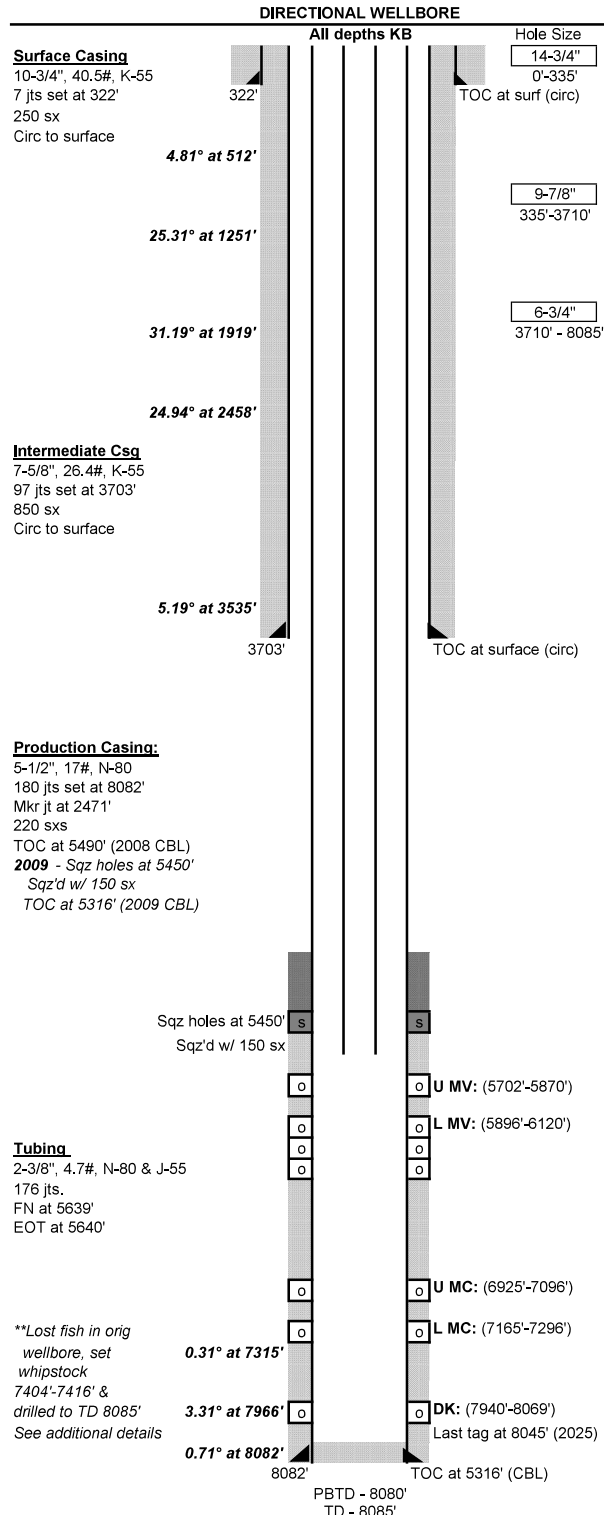
BLM POC Name: MATTHEW H KADE	BLM POC Title: Petroleum Engineer
BLM POC Phone: 5055647736	BLM POC Email Address: MKADE@BLM.GOV
Disposition: Accepted	Disposition Date: 09/10/2025
Signature: Matthew Kade	



Wellbore Schematic

Well Name: Rosa Unit 88C
 Location: Unit B, Sec 8, T-31N, R-6W 1060' FNL & 2230' FEL
 County: San Juan, NM
 API #: 30-045-34458
 Co-ordinates: Lat 36.9184799 Long -107.4848099 NAD83
 Elevations: GROUND: 6218'
 KB: 6234'
 Depths (KB): PBDT: 8080'
 TD: 8085' MD & 7862' TVD

Date Prepared: 4/19/2018 Hespe
 Last Updated: 7/14/2025 Sullivan
 Reviewed By: Jul 23, 2025 *Angela Weiss*
 Spud Date: 6/9/2008
 Completion Date: 7/30/2008
 Re-Completion Date: 8/13/2009
 Last Workover Date: 7/10/2025



Surface Casing: (06/10/2008)
 Drilled a 14-3/4" surface hole to 335'. Set 7 jts 10-3/4", 40.5#, J-55 csg at 322'
 Cmt'd w/ 250 sx Class 3 cmt (353 ft3, 1.41 yld, 14.5 ppg). Circ 20 bbls cmt to surface.

Intermediate Casing: (06/20/2008)
 Drilled a 9-7/8" intermediate hole to 3710'. Set 97 jts 7-5/8", 26.4#, K-55 csg at 3703'.
 Cmt'd w/ 750 sx Premium Lite FM w/ 8% gel (1342 ft3, 2.1 yld, 12.1 ppg) tailed w/ 100 sx Type 3 cmt (140 ft3, 1.4 yld, 14.5 ppg). Circ 82 bbls cmt to surface.

Production Casing: (07/09/2008)
 Drilled a 6-3/4" production hole to 8085'. Set 180 jts 5-1/2", 17# N-80 csg at 8082'.
 Marker jt at 2471'. Cmt'd w/ 100 sx Prem Light HS (260 ft3, 2.57 yld, 11.6 ppg). Tailed w/ 110 sx Prem Light HS (234 ft3, 2.15 yld, 12.3 ppg). TOC at 5490' per CBL (7/2008).
****While drilling prod hole, lost fish downhole & could NOT recover. Pumped cmt plug on top of fish & set whipstock. Drilled off whipstock to TD at 8085'. See details below.**
08/2009 Perf'd 3 sqz holes at 5450' & sqz'd w/ 150 sx cmt. TOC at 5316' (8/2009 CBL).
 See details below in Additional Notes.

Tubing	Length (ft)
KB	16
(110) 2-3/8" 4.7# N-80 EUE 8rd tbq jts	3457
(66) 2-3/8" 4.7# J-55 EUE 8rd tbq jts	2131
(1) 2-3/8" 4.7# J-55 marker joint (2')	2
(1) 2-3/8" 4.7# J-55 EUE 8rd tbq jt	32
(1) 1.78" F-Nipple	1
(1) Muleshoe collar	0.4
Set at:	5640

Artificial Lift:
 Plunger lift

Perforations: DK - 7/2008, MC - 7/2009, MV 8/2009
Upper MV (5702'-5870'): 1 SPF. 45, 0.34" holes. 5702', 06, 08, 12, 14, 18, 20, 24, 26, 30, 33, 35, 40, 44, 48, 52, 56, 60, 64, 68, 72, 76, 80, 84, 88, 90, 94, 98, 5802', 06, 10, 13, 17, 20, 25, 30, 34, 39, 44, 46, 50, 56, 60, 65, 5870'. Acidized w/ 1,000 gal 15% FE acid. Frac w/ 106,500# 20/40 BASF in 98,225 gal FR water.
Lower MV (5896'-6120'): 1 SPF. 54, 0.34" holes. 5896', 98, 5902', 07, 11, 15, 18, 22, 24, 26, 28, 30, 32, 36, 40, 44, 48, 52, 56, 60, 64, 68, 72, 76, 80, 85, 90, 94, 6000', 06, 10, 18, 24, 28, 30, 36, 38, 44, 46, 52, 54, 58, 64, 66, 76, 78, 88, 90, 6100', 08, 14, 16, 18, 6120'. Acidized w/ 1,000 gal 15% FE acid. Frac w/ 54,741# 20/40 BASF.
Upper MC (6925'-7096'): 3SPF. 48, 0.34" holes. 6925', 35, 45, 55, 65, 75, 85, 95, 7005', 15, 25, 35, 45, 55, 85, 7096'. Acidized w/ 48 bbls 15% HCl. Frac w/ 5,060# 100 mesh & 100,448# 40/70 BASF in 4,118 bbls slickwater.
Lower MC (7165'-7296'): 3SPF. 42, 0.34" holes. 7165', 75, 85, 95, 7205', 15, 25, 35, 45, 55, 65, 75, 85, 7296'. Acidized w/ 51 bbls 15% HCl. Frac w/ 5,271# 100 mesh & 100,825# 40/70 BASF in 3,754 bbls slickwater.
DK (7940'-8069'): 3 SPF. 60, 0.34" holes. 7940', 44, 50, 58, 62, 68, 74, 81, 92, 8000', 06, 12, 19, 26, 33, 40, 46, 59, 64, 8069'. Acidized w/ 1000 gal 15% HCl. Frac w/ 9,900# Lite Prop 108 14/40 & 3,480# Tempered LC 20/40 sand in 1872 bbls slickwater.

Formations:	MD	TVD
Kirtland	2442'	2220'
Fruitland	2902'	2680'
Pictured Cliffs	3220'	2998'
Chacra	3989'	3767'
Cliff House	5427'	5205'
Menfee	5473'	5251'
Point Lookout	5700'	5478'
Mancos	6284'	6012'
Dakota	7957'	7734'

Additional Notes:
07/2008 While drilling 6-3/4" production hole, lost 6-3/4" bit, hammer, (8) 4-3/4" DC & 11 jts 3-1/2" DP downhole, could NOT recover fish. RIH w/ whipstock, tagged fish at 7483'. Pumped 46 sx Class H cmt on top of fish & set whipstock 7404'-7416' & circ cmt. Tagged cmt at 7307', DO cmt & drilled off whipstock to TD at 8085'. Set production csg & cmt'd. Perf'd & stim'd DK only. Set 2-7/8" tbq at 8058' w/ SN at 8025'.
08/2009 Recomplete in the Mancos. Perf'd 3 sqz holes at 5450' & sqz'd w/ 100 sx Fracem cmt tailed w/ 50 sx type 5 neat cmt. Ran CBL, TOC at 5316'. Recomplete the MV. Trimming wellbore w/ 2-3/8" tbq set at 8014'.
07/2010 Tagged fill at 8046'. Run completion profile log. EOT at 8014' w/ FN at 7980'.
06/2011 Tagged fill at 8045' & CO to 8075'. Run completion profile log. Land tbq same.
07/2025 - Well protection, tbq raise. Tag fill @ 8045'. Scan tbq (60y, 148b, 28g, 15r). Muleshoe collar plugged w/ scale. Drift tbq, land EOT @ 5640', FN @ 5639'.

Max deviation is 31.19° at 1919' & Max DLS is 6.18 °/100' at 1251'

Sante Fe Main Office
Phone: (505) 476-3441

General Information
Phone: (505) 629-6116

Online Phone Directory
<https://www.emnrd.nm.gov/oed/contact-us>

State of New Mexico
Energy, Minerals and Natural Resources
Oil Conservation Division
1220 S. St Francis Dr.
Santa Fe, NM 87505

CONDITIONS

Action 510333

CONDITIONS

Operator: LOGOS OPERATING, LLC 2010 Afton Place Farmington, NM 87401	OGRID: 289408
	Action Number: 510333
	Action Type: [C-103] Sub. Workover (C-103R)

CONDITIONS

Created By	Condition	Condition Date
andrew.fordyce	None	10/2/2025