

State of New Mexico
Energy, Minerals and Natural Resources

Office
District I – (575) 393-6161
1625 N. French Dr., Hobbs, NM 88240
District II – (575) 748-1283
811 S. First St., Artesia, NM 88210
District III – (505) 334-6178
1000 Rio Brazos Rd., Aztec, NM 87410
District IV – (505) 476-3460
1220 S. St. Francis Dr., Santa Fe, NM
87505

OIL CONSERVATION DIVISION
1220 South St. Francis Dr.
Santa Fe, NM 87505

WELL API NO. 30-025-27271
5. Indicate Type of Lease STATE <input checked="" type="checkbox"/> FEE <input type="checkbox"/>
6. State Oil & Gas Lease No.
7. Lease Name or Unit Agreement Name Lansford
8. Well Number: 002
9. OGRID Number: 373817
10. Pool name or Wildcat PENROSE SKELLY;GRAYBURG
11. Elevation (Show whether DR, RKB, RT, GR, etc.)

SUNDRY NOTICES AND REPORTS ON WELLS

(DO NOT USE THIS FORM FOR PROPOSALS TO DRILL OR TO DEEPEN OR PLUG BACK TO A DIFFERENT RESERVOIR. USE "APPLICATION FOR PERMIT" (FORM C-101) FOR SUCH PROPOSALS.)

1. Type of Well: Oil Well ☒ Gas Well ☐ Other ☐

2. Name of Operator

Energy Acumen LLC

3. Address of Operator

10103 Gutierrez Rd NE, Albuquerque, NM 87111

4. Well Location

Unit Letter: K : 1650 feet from the S line and 1825 feet from the W line

Section 21 Township 21S Range 37E NMPM County: Lea

12. Check Appropriate Box to Indicate Nature of Notice, Report or Other Data

NOTICE OF INTENTION TO:

PERFORM REMEDIAL WORK ☐ PLUG AND ABANDON ☐

TEMPORARILY ABANDON ☐ CHANGE PLANS ☐

PULL OR ALTER CASING ☐ MULTIPLE COMPL ☐

DOWNHOLE COMMINGLE ☐

CLOSED-LOOP SYSTEM ☐

OTHER: ☐

SUBSEQUENT REPORT OF:

REMEDIAL WORK ☐ ALTERING CASING ☐

COMMENCE DRILLING OPNS. ☐ P AND A ☒

CASING/CEMENT JOB ☐

OTHER: ☐

13. Describe proposed or completed operations. (Clearly state all pertinent details, and give pertinent dates, including estimated date of starting any proposed work). SEE RULE 19.15.7.14 NMAC. For Multiple Completions: Attach wellbore diagram of proposed completion or recompletion.

See Plugging Procedure/Events Below

Spud Date:

Rig Release Date:

I hereby certify that the information above is true and complete to the best of my knowledge and belief.

SIGNATURE Ethan Wakefield TITLE: Authorized Representative DATE: 1/19/24

Type or print name: Ethan Wakefield E-mail address: e.wakefield@dwsrigs.com PHONE: (405)343-7736

For State Use Only

APPROVED BY: _____ TITLE _____ DATE _____

Conditions of Approval (if any):

Energy Acumen LLC

Plug And Abandonment End Of Well Report

Lansford #002

1650' FSL & 1825' FWL, Section 21, 21S, 37E

Lea County, NM / API 30-025-27271

Work Summary:

- 12/17/23** Made BLM and NMOCD P&A operations notifications at 9:00 AM MST.
- 12/18/23** Held safety meeting on the Lansford #001. Moved rig to new location on the Lansford #002. Worked on cellar. Continued moving equipment and working on location.
- 12/19/23** Arrived on location. Held safety meeting. Checked well pressures. Worked on cellar. H2S present. Pumped 40 bbls down back side. L/D 149 rods. R/D WH. R/U BOP and function test. R/U floor and equipment. TOOH with 115 joints of tubing. P/U 5.5" scraper. TIH to 3654'. TOOH with 22 joints. Shut in and secured well for the day.
- 12/20/ 23** Arrived on location. Held safety meeting. Checked well pressures. TOOH and L/D scraper. P/U 5.5" CR. TIH and set CR at 3602'. R/U cementing services. Pumped 14 bbl to fill tubing. Successfully pressure tested tubing. Sting out of CR. Roll hole with 90 bbls, 60 bbls to establish circulation. Successfully pressure tested casing to 800 psi. R/D cementers. TOOH. R/U wireline services. RIH and logged well. POOH. Shut down from 12:00 to 2:00 for safety meeting. TIH. R/U cementing services. Pumped plug #1 for 3602 to 3296'. R/D cementing services. L/D 10 joints. R/U cementing services. Pumped mud/gel spacer from 3296' to 2643'. L/D 30 joints. R/U cementing services. Pumped plug #2 from 2643' to 2344'. R/D cementing services. L/D 9 joints. R/U cementing services. Pumped mud/gel spacer from 2344'to 1284'. R/D cementing services. L/D 33 joints. Shut in and secured well.

- 12/21/23** Arrived on location. Held safety meeting. Checked well pressures. TIH to 1284'. R/U cementing services. Pumped plug #3 from 1284' to 1069'. R/D cementers. L/D 7 joints. Pumped mud/gel spacer from 1069' to 466'. R/D cementers. L/D 19 joints. R/U cementing services. Pumped plug #4 from 466' to surface. R/D cementers. L/D 14 joints. Rig down equipment and prepare to MOL.
- 1/17/24** Arrived on location. Held safety meeting. Completed gas check. Used backhoe to safely expose wellhead. Set up welding unit on location. Performed wellhead cutoff. Removed old wellhead. Tagged cement at 3' on the backside and 2' inside. R/U cementing services. Topped off casing. Welder attached marker per NMOCD regulations.

Plug Summary:

Plug #1: (Grayburg Perforations, and Queen Formation Top, 3,602'-3,296', 36 Sacks Type I/II Cement)

P/U 5.5" CR. TIH and set CR at 3602'. R/U cementing services. Pumped 14 bbl to fill tubing. Successfully pressure tested tubing. Sting out of CR. Roll hole with 90 bbls, 60 bbls to establish circulation. Successfully pressure tested casing to 800 psi. R/D cementers. TOOH. R/U wireline services. RIH and logged well. POOH. Shut down from 12:00 to 2:00 for safety meeting. TIH. R/U cementing services. Pumped plug #1 for 3602' to 3296'. R/D cementing services.

Plug #2: (Yates, and Tansil Formation Tops, 2,643'-2,344', 35 Sacks Type I/II Cement)

R/U cementing services. Pumped plug #2 from 2643' to 2344'. R/D cementing services.

Plug #3: (Anhy Formation Top, 1,284'-1,069', 25 Sacks Type I/II Cement)

R/U cementing services. Pumped plug #3 from 1284' to 1069'. R/D cementers.

Plug #4: (Surface Casing Shoe, 466'-Surface, 60 Sacks Type I/II Cement (5 sx for top off))

R/U cementing services. Pumped plug #4 from 466' to surface. R/D cementers. Performed wellhead cutoff. Removed old wellhead. Tagged cement at 3' on the backside and 2' inside. R/U cementing services. Topped off casing. Welder attached marker per NMOCD regulations.

Energy Acuman LLC
Lansford #002
API: 30-025-27271
Lea, New Mexico

8.625" 28# @ 416'
OH: 12.25"

466 feet - Surface
466 foot plug
60 Sacks of Type I/II Cement

1284 feet - 1069 feet
215 foot plug
25 Sacks of Type I/II Cement

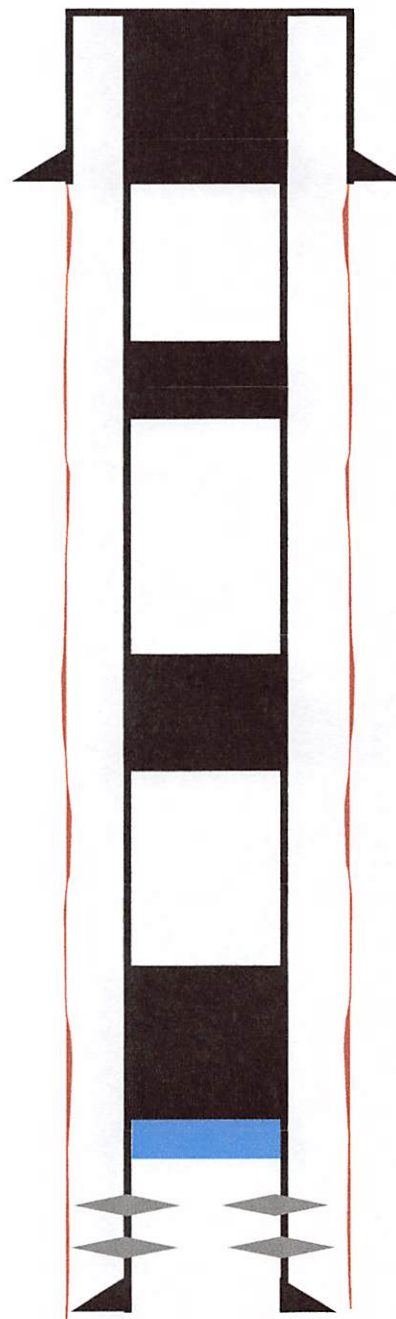
2643 feet - 2344 feet
299 foot plug
35 Sacks of Type I/II Cement

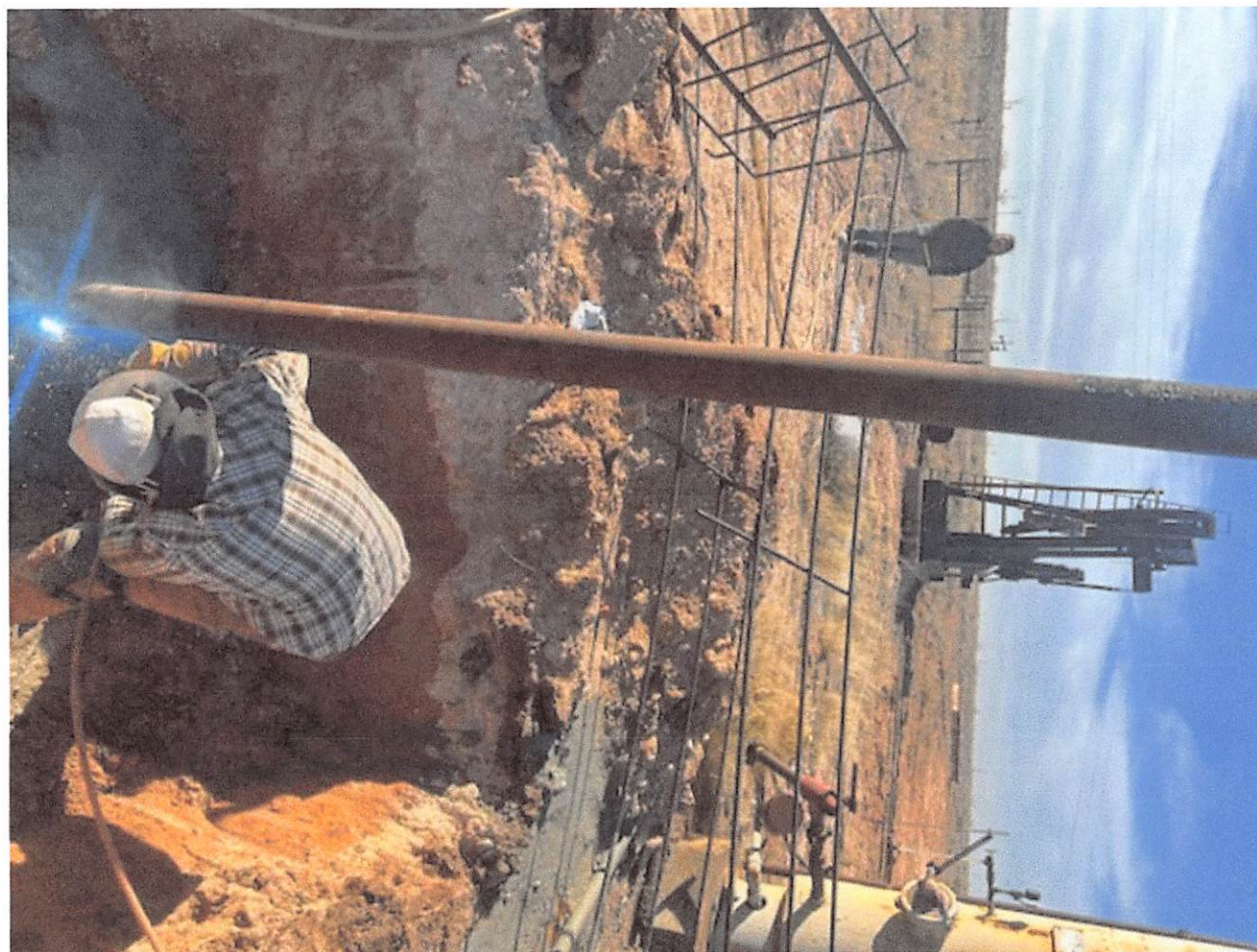
3602 feet - 3296 feet
306 foot plug
36 sacks of Type I/II Cement

Anhy - 1234 feet
Tansil - 2444 feet
Yates - 2593 feet
Queen - 3396 feet
Grayburg - 3654 feet
San Andres - 3955 feet

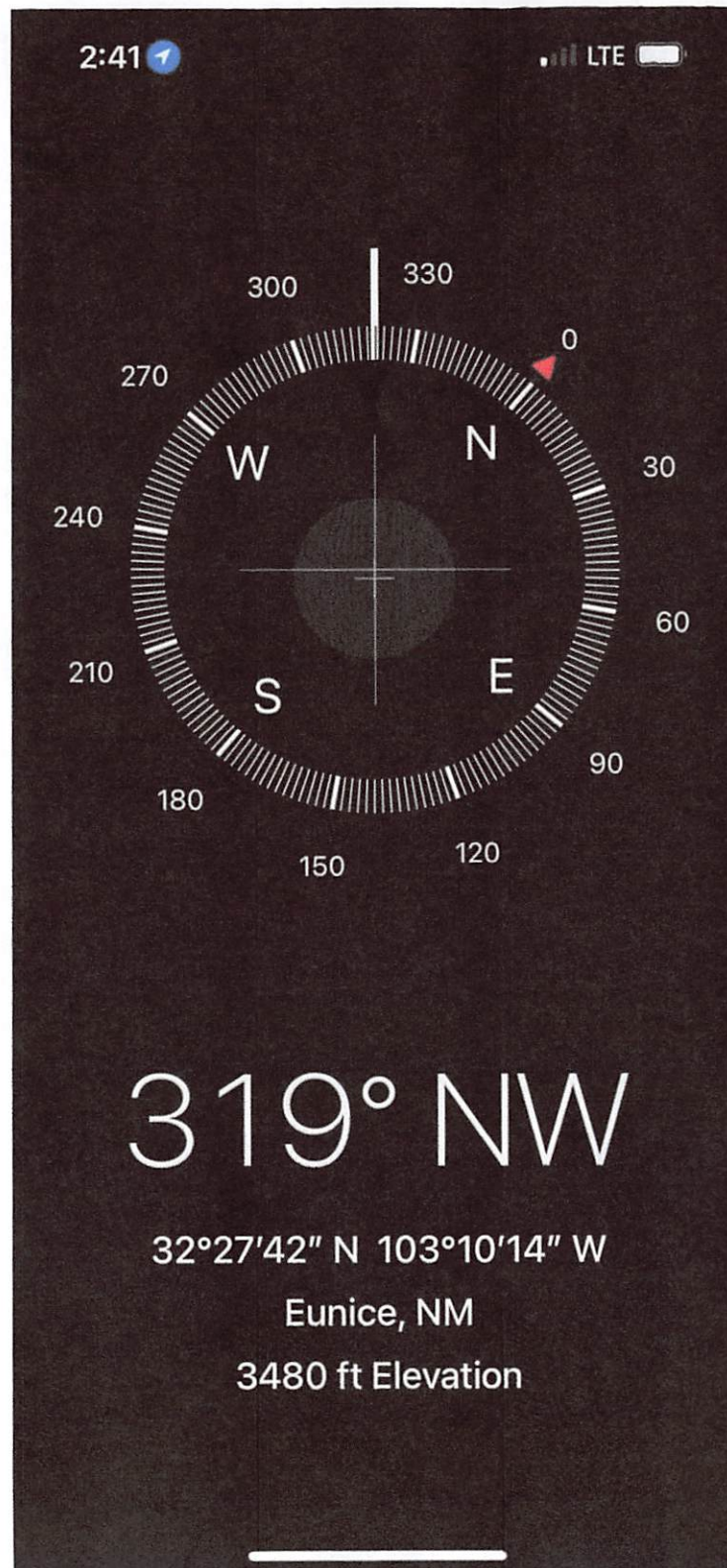
3652 feet - 3800 feet

Production Casing
5.5" #14 @ 4250'
OH: 7.625"









Sante Fe Main Office
Phone: (505) 476-3441

General Information
Phone: (505) 629-6116

Online Phone Directory
<https://www.emnrd.nm.gov/oed/contact-us>

State of New Mexico
Energy, Minerals and Natural Resources
Oil Conservation Division
1220 S. St Francis Dr.
Santa Fe, NM 87505

CONDITIONS

Action 306336

CONDITIONS

Operator: J.A. Drake Well Service Inc. 607 W Pinon Farmington, NM 87401	OGRID: 330485
	Action Number: 306336
	Action Type: [C-103] Sub. Plugging (C-103P)

CONDITIONS

Created By	Condition	Condition Date
jagarcia	Marker needs to be corrected, further OCD work will include this item	11/14/2025