

Submit 1 Copy To Appropriate District Office

District I – (575) 393-6161

1625 N. French Dr., Hobbs, NM 88240

District II – (575) 748-1283

811 S. First St., Artesia, NM 88210

District III – (505) 334-6178

1000 Rio Brazos Rd., Aztec, NM 87410

District IV – (505) 476-3460

1220 S. St. Francis Dr., Santa Fe, NM 87505

State of New Mexico
Energy, Minerals and Natural ResourcesOIL CONSERVATION DIVISION
1220 South St. Francis Dr.
Santa Fe, NM 87505

Form C-103

Revised July 18, 2013

SUNDRY NOTICES AND REPORTS ON WELLS (DO NOT USE THIS FORM FOR PROPOSALS TO DRILL OR TO DEEPEN OR PLUG BACK TO A DIFFERENT RESERVOIR. USE "APPLICATION FOR PERMIT" (FORM C-101) FOR SUCH PROPOSALS.)		WELL API NO. 30-015-01296
1. Type of Well: Oil Well <input type="checkbox"/> Gas Well <input checked="" type="checkbox"/> Other INJECTION		5. Indicate Type of Lease STATE <input checked="" type="checkbox"/> FEE <input type="checkbox"/>
2. Name of Operator SELLERS & FULTON OIL LLC		6. State Oil & Gas Lease No. E-9510
3. Address of Operator 303 Veterans Airpark Lane, Ste. 3000, Midland, Tx 79705		7. Lease Name or Unit Agreement Name EAST RED LAKE UT.
4. Well Location Unit Letter <u>D</u> <u>660</u> feet from the <u>N</u> line and <u>660</u> feet from the <u>W</u> line Section <u>1</u> Township <u>17S</u> Range <u>28E</u> NMPM County <u>Eddy</u>		8. Well Number <u>#001Q</u>
11. Elevation (Show whether DR, RKB, RT, GR, etc.) 3600' DF		9. OGRID Number <u>317595</u>
10. Pool name or Wildcat RED LAKE'QN-GRAY, EAST		

12. Check Appropriate Box to Indicate Nature of Notice, Report or Other Data

NOTICE OF INTENTION TO:

PERFORM REMEDIAL WORK ☐ PLUG AND ABANDON ☐
 TEMPORARILY ABANDON ☐ CHANGE PLANS ☐
 PULL OR ALTER CASING ☐ MULTIPLE COMPL ☐
 DOWNHOLE COMMINGLE ☐
 CLOSED-LOOP SYSTEM ☐
 OTHER: ☐

SUBSEQUENT REPORT OF:

REMEDIAL WORK ☐ ALTERING CASING ☐
 COMMENCE DRILLING OPNS. ☐ P AND A ☒
 CASING/CEMENT JOB ☐
 OTHER: ☐

13. Describe proposed or completed operations. (Clearly state all pertinent details, and give pertinent dates, including estimated date of starting any proposed work). SEE RULE 19.15.7.14 NMAC. For Multiple Completions: Attach wellbore diagram of proposed completion or recompletion.

- 08/27/25 RU P&A equipment.
- 08/29/25 Set CIBP @ 1503.
- 09/02/25 Pump 36 bbls MFL well on vacuum. Spot 11 sx class C cmt from 1503-1400. WOC. Tag @ 1397.
- 09/03/25 Perf @ 1310 sqz 40 sx class C cmt from 1310-1210. WOC. Tag @ 1208.
- 09/04/25 Perf @ 900 spot 45 sx class C cmt from 950. WOC. Tag @ 772. Perf @ 665 spot 50 sx class C cmt from 950. WOC. Tag @ 374.
- 09/08/25 Perf @ 360 spot 75 sx class C cmt from 360. WOC. Tag @ 224. Perf @ 220 spot 50 sx class C cmt from 220. WOC. Tag @ 96.
- 09/09/25 Perf @ 90 spot 30 sx class C cmt from 90. WOC. Tag @ 72. Perf @ 65, sqz 30 sx class C cmt from 65. WOC. Tag @ 65.
- 09/10/25 Circ 25 sx class C cmt down 5 1/2 csg up 8 5/8 to surf. P&A complete.

Spud Date:

Rig Release Date:

I hereby certify that the information above is true and complete to the best of my knowledge and belief.

SIGNATURE

TITLE

Agent

DATE

09/11/25

Type or print name

Jimmy Bagley

E-mail address:

sunsetwellservice@yahoo.com

PHONE: 432-561-8600

For State Use Only

APPROVED BY:

TITLE

DATE

Conditions of Approval (if any):

AUTHORIZED BY: Donna Thompson, Apache P&A Tech II

DATE: 11/20/2025

**Apache Corporation
EAST RED LAKE UNIT #001Q
30-015-01296**

08/27/2025 MIRU

08/28/2025 Received permission from NMOCD to cut tubing above packer at 1555'.

08/29/2025 Plug (#1) RIH with W/L and set CIBP at 1503'. Received approval from NMOCD (Loren) to set CIBP at 1503'. Ran CBL from 1503' to surface, TOC at 1346'. Submitted results to NMOCD.

09/02/2025 Spot (11 sxs) Class "C" cement from 1503'-1400'.

09/03/2025 Tag TOC at 1397'.

Plug (#2) PUH to 1310' and perforate, no circulation. Squeezed (40 sxs) Class "C" cement from 1310'-1210', tag TOC at 1208'.

Plug (#3) PUH to 900' and perforated, no circulation, notified NMOCD. Spot (45 sxs) Class "C" cement from 900'-950', tag TOC at 772'.

09/04/2025 Plug (#4) Tested casing and found bad casing from 672' to surface. Perforated 665', spot (50 sxs) Class "C" cement at 715'.

09/05/2025 Tag TOC at 645'.

Plug (#5) Perforate at 645', spot (50 sxs) Class "C" cement at 645', tag TOC at 527'.

Plug (#6) Perforate at 515', spot (50 sxs) Class "C" cement at 515'.

09/08/2025 Tag TOC at 374'

Plug (#7) Perforate at 360', spot (75 sxs) Class "C" cement at 360', tag TOC at 224'.

Plug (#8) Perforate at 220', spot (50 sxs) Class "C" cement at 220', tag TOC at 96'.

09/09/2025 Plug (#9) Perforate at 90' and spot (30 sxs) Class "C" cement at 90', tag TOC at 72'.

Plug (#10) Perforate at 65' and spot (30 sxs) Class "C" cement 65', tag TOC at 65'.

09/10/2025 Plug (#11) Circulate (25 sxs) Class "C" cement down 5 1/2" casing up 8 5/8" casing to surface. RDMO.

10/22/2025 RU wellhead cutoff crew. Cutoff wellhead and anchors. Install dry hole marker.

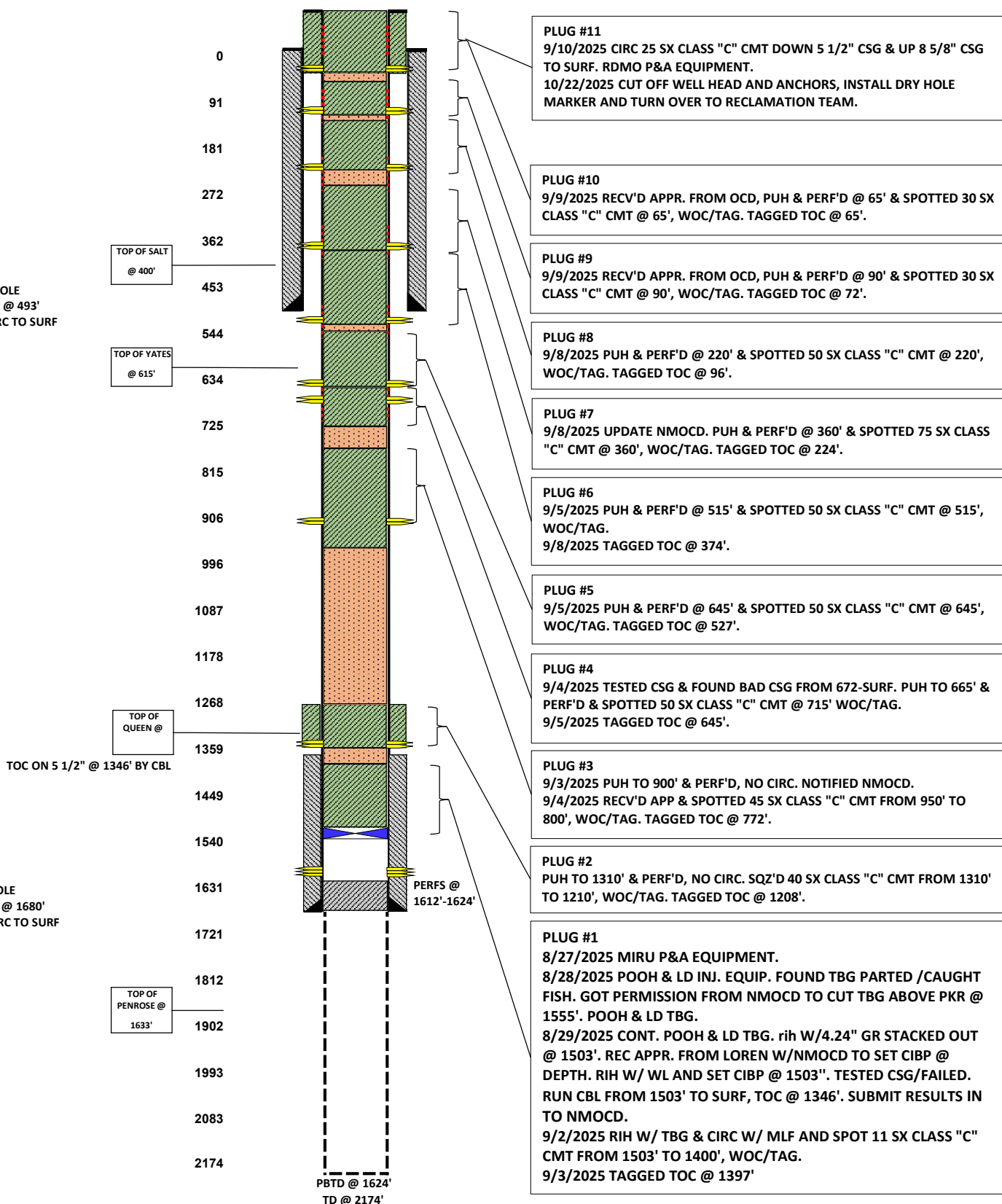
11/20/2025 Submit paperwork to SLO and NMOCD.



LEASE NAME	EAST RED LAKE UT.
WELL #	#001Q
API #	30-015-01296
COUNTY	EDDY, NM

FORM TOPS

FINAL P&A WB DIAGRAM







Sante Fe Main Office
Phone: (505) 476-3441

General Information
Phone: (505) 629-6116

Online Phone Directory
<https://www.emnrd.nm.gov/ocd/contact-us>

State of New Mexico
Energy, Minerals and Natural Resources
Oil Conservation Division
1220 S. St Francis Dr.
Santa Fe, NM 87505

CONDITIONS

Action 528534

CONDITIONS

Operator: APACHE CORPORATION 303 Veterans Airpark Ln Midland, TX 79705	OGRID: 873
	Action Number: 528534
	Action Type: [C-103] Sub. Plugging (C-103P)

CONDITIONS

Created By	Condition	Condition Date
loren.diede	None	11/21/2025