

District I - (575) 393-6161
 1625 N. French Dr., Hobbs, NM 88240
 District II - (575) 748-1283
 811 S. First St., Artesia, NM 88210
 District III - (505) 334-6178
 1000 Rio Brazos Rd., Aztec, NM 87410
 District IV - (505) 476-3460
 1220 S. St. Francis Dr., Santa Fe, NM
 87505

OIL CONSERVATION DIVISION
 1220 South St. Francis Dr.
 Santa Fe, NM 87505

WELL API NO. 30-025-07171
5. Indicate Type of Lease STATE <input checked="" type="checkbox"/> FEE <input type="checkbox"/>
6. State Oil & Gas Lease No.
7. Lease Name or Unit Agreement Name Oberholtzer
8. Well Number 1
9. OGRID Number 330754
10. Pool name or Wildcat Gladiola; Devonian

SUNDRY NOTICES AND REPORTS ON WELLS
 (DO NOT USE THIS FORM FOR PROPOSALS TO DRILL OR TO DEEPEN OR PLUG BACK TO A DIFFERENT RESERVOIR. USE "APPLICATION FOR PERMIT" (FORM C-101) FOR SUCH PROPOSALS.)

1. Type of Well: Oil Well ☒ Gas Well ☐ Other

2. Name of Operator
Nitro Oil & Gas, LLC

3. Address of Operator
17806 IH 10 W, Ste 300, San Antonio, Texas 78267

4. Well Location
 Unit Letter **B** : **660** feet from the **N** line and **1980** feet from the **E** line
 Section **8** Township **12S** Range **38E** NMPM County **Lea**
 11. Elevation (Show whether DR, RKB, RT, GR, etc.)
3862' GR

12. Check Appropriate Box to Indicate Nature of Notice, Report or Other Data

NOTICE OF INTENTION TO:

PERFORM REMEDIAL WORK ☐ PLUG AND ABANDON ☒
 TEMPORARILY ABANDON ☐ CHANGE PLANS ☐
 PULL OR ALTER CASING ☐ MULTIPLE COMPL ☐
 DOWNHOLE COMMINGLE ☐
 CLOSED-LOOP SYSTEM ☐
 OTHER: ☐

SUBSEQUENT REPORT OF:

REMEDIAL WORK ☐ ALTERING CASING ☐
 COMMENCE DRILLING OPNS. ☐ P AND A ☐
 CASING/CEMENT JOB ☐
 OTHER: ☐

13. Describe proposed or completed operations. (Clearly state all pertinent details, and give pertinent dates, including estimated date of starting any proposed work). SEE RULE 19.15.7.14 NMAC. For Multiple Completions: Attach wellbore diagram of proposed completion or recompletion.

JMR Services, LLC respectfully proposes the attached NOI to P&A this well on behalf of Nitro Oil & Gas, LLC

Spud Date:

Rig Release Date:

I hereby certify that the information above is true and complete to the best of my knowledge and belief.

SIGNATURE Kelton Woodard

TITLE Plugging Agent

DATE 12/3/2025

Type or print name Kelton Woodard

E-mail address: kwoodard@jmrservices.com PHONE: 432-618-1050

For State Use Only

APPROVED BY:

TITLE

DATE

Conditions of Approval (if any):

**Proposed P&A NOI
Nitro Oil & Gas, LLC
Oberholtzer #1
30-025-07171**

1. Hold Pre job meeting, comply with all NMOCD, BLM and environmental regulations.
2. MIRU P&A rig and equipment.
3. Check and record tubing, casing and bradenhead pressures.
4. Remove existing piping from casing valve, RU blow lines from casing valves and blow down casing pressure. Kill well as necessary. Ensure that well is dead or on a vacuum.
6. RIH with 5.5 CIBP and set at 11924'.
7. MIRU logging truck. Run CBL from 11924' to log to surface.. NOTE: Results of CBL may change the following plugs. Electronic copy of CBL to be sent to NMOCD.
8. RIH with work string. test casing to 500psi for 30 min. If casing does not test, then discuss with Regulatory for procedure change.
9. Plug #1: Miss/Woodford/CIBP: With CIBP @ 11924', Spot 90 sxs class H cement from 11924 to 11310. WOC & Tag.
10. Plug #2: Atoka/Strawn: Spot 75 sxs class H cement from 10970' to 10460'.
10. Plug #3: Wolfcamp: Spot 20 sxs class H cement from 9075' to 8975'.
11. Plug #4: Abo/Tubb: Spot 124 sxs class H cement from 7845 to 6964.
12. Plug #5: Glorieta: Spot 21 sxs class C cement from 5960' to 5860'.
13. Plug #6: San Andres/Inter Shoe/Grayburg: Perf & Squeeze 113 sxs (47in/66out) class C cement w/2% CaCl from 4520' to 4145'. WOC 4hrs. Tag
14. Plug #7: Queen: Perf & Squeeze 40 sxs (17in/22out) class C cement w/2% CaCl from 3880' to 3780'. WOC 4hrs & Tag.
14. Plug #8: Yates: Perf & Squeeze 40 sxs (17in/22out) class C cement w/2% CaCl from 3093' to 2993'. WOC 4hrs & Tag.
15. Plug #9: Rustler: Perf & Squeeze 40 sxs (17in/22out) class C cement w/2% CaCl from 2345' to 2245'. WOC 4hrs & Tag.
16. Plug #10: Surface casing shoe. Perf & Circ 95 sxs (40in/55out) Class C cement from 375 to surface.
17. RD cementing equipment. Cut off wellhead, fill any exposed annulus with cement, as necessary. Install above ground P&A marker.
18. Record GPS coordinates for P&A marker and the Final P&A Report. Photograph the P&A marker and attach to the report.
19. RD and MO all rig and cement equipment. Ensure that location is free of trash before moving off.
20. Send all reports and attachments will be uploaded to NMOCD website within 30 days of completion.

Estimated Pre P&A Wellbore Diagram

NMOCD

OBERHOLTZER #001

API # 30-025-07171

NW/NE Unit B, Sec 8, T12S, R38E

Lea County, NM

GL 3862'
 Spud Date 8/24/1957
 Re-entered 6/29/2005



Pumpjack / rods

SURF CSG

Hole size	17"	<u>FORMATION TOPS</u>	
Csg Size:	13.375"	Anhydrite	2,282'
Wt:	50#	T. Yates	3,043'
Grade:	?	T. San Andres	4,414'
Depth	325'	T. Glorieta	5,850'
cap cf/ft:	?	T. Tubbs	7,114'
TOC:	?	T. Abo	7,795'
		T. Miss	11,360'
		T. Woodford	11,895'
		T. Devonian	11,970'

TOC? (Estimated at Surf)

INT CSG

Hole size 11"
 Csg Size: 8.625"
 Wt: 32#
 Grade: ?
 DV Tool NA
 Depth 4,470'
 cap cf/ft: ?
 Csg/Csg Ann, cf/ft: ?
 Csg/OH Ann, cf/ft: ?
 TOC: ?

TOC? (Estimated at Surf)

PROD CSG

Hole size 7.875"
 Csg Size: 5.5"
 Wt: 17 & 20
 Grade: ?
 DV Tool NA
 Depth 12,010
 cap cf/ft: ?
 Csg/Csg Ann, cf/ft: ?
 Csg/OH Ann, cf/ft: ?
 TOC: ?

TOC ? (Estimated at 5,475')

TBG

Size 2.875"
 set 11,090'
 Packer @ 11,510'
 Pump @ 8,034'

Packer at 11,510'

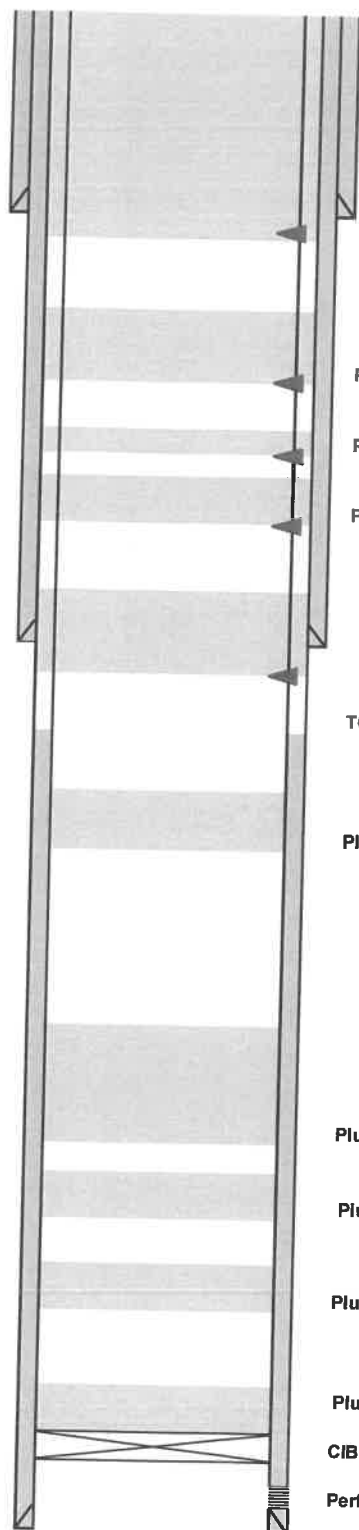
Perfs 11,974 - 11,994

TD 12,010'

Author:	Shyanne @ JMR	Well No.	1
Well Name	Oberholtzer	API #:	30-025-07171
Field/Pool	Gladiola; Devonian	Location:	660' FNL & 1980' FEL
County	Lea		Sec 8, T12S, R38E
State	NM	GL:	3862'
Spud Date	8/24/1957		

Description	O.D.	Grade	Weight	Depth	Hole	Cmt Sx	TOC
Surface	13 3/8		50#	325'	17	425	0'
Intermediate	8 5/8		32#	4470'	11	2,100	0'
Production	5 1/2		17/20#	12010'	7 7/8	1,200	5475'

Formation Tops	
Rustler	2295'
Yates	3043'
Queen	3830'
Grayburg	4195'
San Andres	4445'
Glorietta	5910'
Tubb	7155'
Abo	7810'
Wolfcamp	9025'
Strawn	10510'
Atoka	10920'
Mississippian	11360'
Devonian	11970'



Plug #10: Surface casing shoe. Perf & Circ 95 sxs (40in/55out) Class C cement from 375 to surface.

Plug #9: Rustler: Perf & Squeeze 40 sxs (17in/22out) class C cement w/2% CaCl from 2345' to 2245'. WOC 4hrs & Tag

Plug #8: Yates: Perf & Squeeze 40 sxs (17in/22out) class C cement w/2% CaCl from 3093' to 2993'. WOC 4hrs & Tag

Plug #7: Queen: Perf & Squeeze 40 sxs (17in/22out) class C cement w/2% CaCl from 3880' to 3780'. WOC 4hrs & Tag.

Plug #6: San Andres/Inter Shoe/Grayburg: Perf & Squeeze 113 sxs (47in/66out) class C cement w/2% CaCl from 4520' to 4145'. WOC 4hrs. Tag

TOC @ 5475'

Plug #5: Glorieta: Spot 21 sxs class C cement from 5960' to 5860'.

Plug #4: Abo/Tubb: Spot 124 sxs class H cement from 7845 to 6964.

Plug #3: Wolfcamp: Spot 20 sxs class H cement from 9075' to 8975'.

Plug #2: Atoka/Strawn: Spot 75 sxs class H cement from 10970' to 10460'.

Plug #1: Miss /Woodford/CIBP: With CIBP @ 11924', Spot 76 sxs class H cement from 11924 to 11310. WOC & Tag.
CIBP set @ 11924'.

Perfs 11,974' to 11,994'.

Sante Fe Main Office
Phone: (505) 476-3441

General Information
Phone: (505) 629-6116

Online Phone Directory
<https://www.emnrd.nm.gov/ocd/contact-us>

State of New Mexico
Energy, Minerals and Natural Resources
Oil Conservation Division
1220 S. St Francis Dr.
Santa Fe, NM 87505

DEFINITIONS

Action 531468

DEFINITIONS

Operator: JMR SERVICES, LLC (OPG Vendor) 4706 Green Tree Blvd. Midland, TX 79707	OGRID: 333576
	Action Number: 531468
	Action Type: [UF-OMA] NOI Plug & Abandon Well (UF-OMA-C-103F)

DEFINITIONS

The OCD Mitigation Activity (OMA) forms are a subset of the OCD's forms exclusively designed for activities related to State of New Mexico's contracted evaluation, plugging, decommissioning, remediation, salvage and reclamation activities. Specifically, these forms are typically used where the OCD has acquired a hearing order allowing the OCD to perform mitigation activities on wells and associated facilities that no longer have an authorized or viable operator to perform the necessary work. These forms are not to be utilized for any other purpose.

Sante Fe Main Office
Phone: (505) 476-3441

General Information
Phone: (505) 629-6116

Online Phone Directory
<https://www.emnrd.nm.gov/ocd/contact-us>

State of New Mexico
Energy, Minerals and Natural Resources
Oil Conservation Division
1220 S. St Francis Dr.
Santa Fe, NM 87505

QUESTIONS

Action 531468

QUESTIONS

Operator: JMR SERVICES, LLC (OPG Vendor) 4706 Green Tree Blvd. Midland, TX 79707	OGRID: 333576
	Action Number: 531468
	Action Type: [UF-OMA] NOI Plug & Abandon Well (UF-OMA-C-103F)

QUESTIONS

Prerequisites	
[OGRID] Well Operator	[330754] Nitro Oil & Gas, LLC
[API] Well Name and Number	[30-025-07171] OBERHOLTZER #001
Well Status	Active

Sante Fe Main Office
Phone: (505) 476-3441

General Information
Phone: (505) 629-6116

Online Phone Directory
<https://www.emnrd.nm.gov/ocd/contact-us>

State of New Mexico
Energy, Minerals and Natural Resources
Oil Conservation Division
1220 S. St Francis Dr.
Santa Fe, NM 87505

CONDITIONS

Action 531468

CONDITIONS

Operator: JMR SERVICES, LLC (OPG Vendor) 4706 Green Tree Blvd. Midland, TX 79707	OGRID: 333576
	Action Number: 531468
	Action Type: [UF-OMA] NOI Plug & Abandon Well (UF-OMA-C-103F)

CONDITIONS

Created By	Condition	Condition Date
loren.diede	Notify NMOCD 24 hours prior to beginning of P&A operations.	12/3/2025
loren.diede	Submit Daily Operations Report and estimated costs via NMOCD OMA system	12/3/2025
loren.diede	Submit photo and GPS coordinates of the P&A marker with the C-103P subsequent report. The API# on the marker must be clearly legible.	12/3/2025
loren.diede	NMOCD does not consider this well to be in the LPCH restricted area and an above-ground P&A marker is required.	12/3/2025